

Copy Program (HDCOPY32)

Overview

Functions

Copy program (referred as HDCOPY32 hereafter) copies files or folders between disks. HDCOPY32 is mainly used for the backup of the system hard disk.

Files

HDCOPY32 consists of the following files:

HDCOPY32 : Main program

Notes

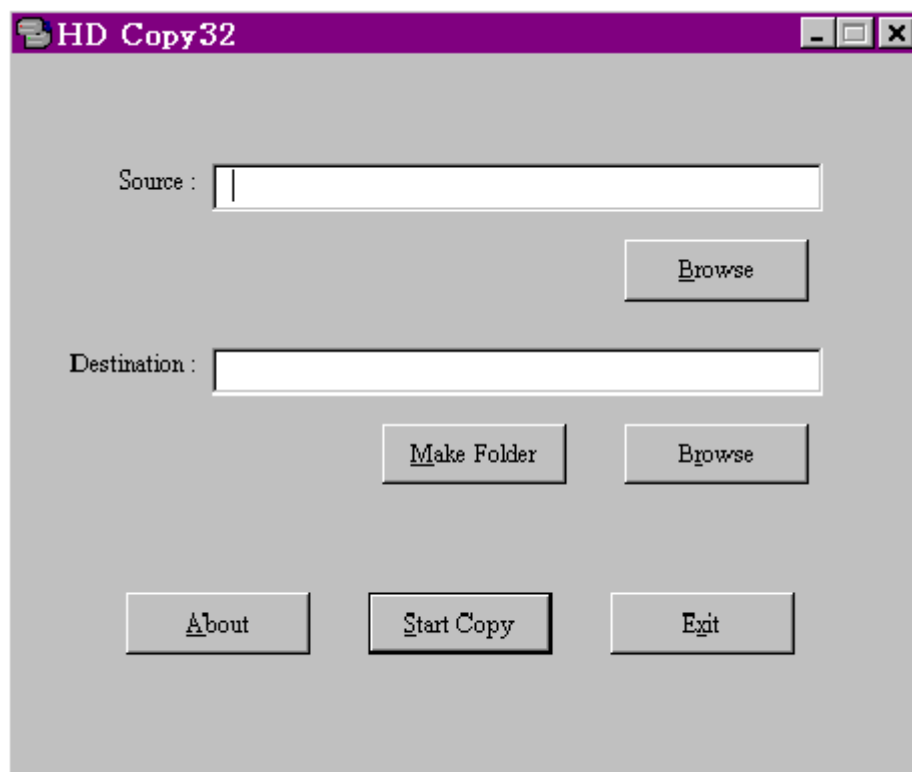
- The disks that are specified as the source and the destination cannot be accessed while a backup operation is being performed. All applications other than this one should be closed.
- This program should not be exited by the illegal method while a backup operation is in progress. If it is, the integrity of the source and the destination disks cannot be guaranteed.
- Windows 95 should not be exited while a backup operation is in progress. If it is, the integrity of the source and the destination disks cannot be guaranteed.
- Care should be taken to ensure a stable supply of power during the backup operation. The integrity of the source and the destination disks cannot be guaranteed if computer operation is interrupted due to insufficient power.

Operation

Starting up the Program

The program can be started up by selecting its file name in the [EPSON Tools] group in the [Start] menu. or by double clicking the file in the [Explorer].

Once started, the window shown below appears on the screen. This is called the "Main Window."



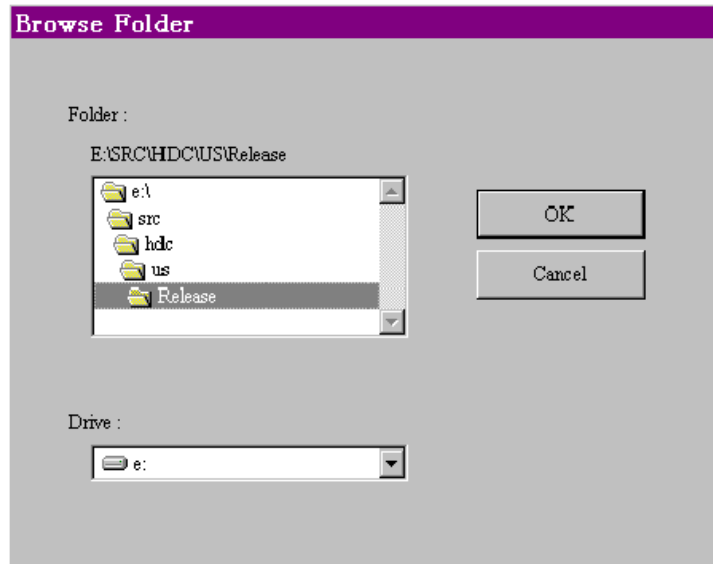
Quitting the Program

To quit the program, click the [X] button on the right side of the title bar or select [Exit] button. The program also can be quitted by selecting [Close] in the system menu.

Specifying a folder

Either of the two following methods can be used to specify paths to the copy source folder and the copy destination folder.

- Direct input into the edit boxes at the top and center of the Main Window
- Clicking the [Browse] buttons below each edit box to display the dialog shown below. This dialog is equivalent to the Open common dialog.

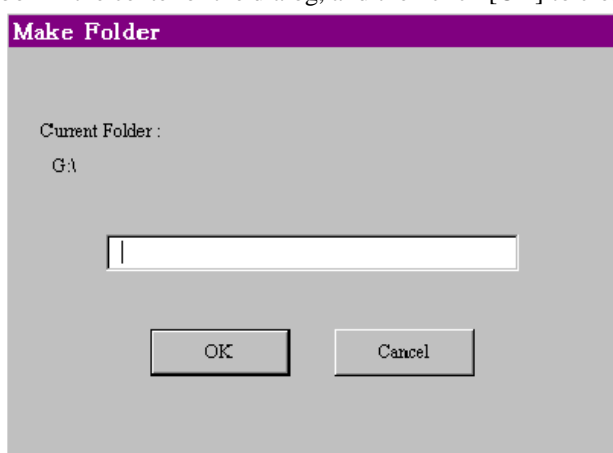


The following rules apply when specifying a path.

- Specification must be an absolute path, starting with a drive name.
- The same drive cannot be specified for both the source and the destination.
- An absolute path input into an edit box can be up to 259 characters long.
- The total number of characters in the file names and sub-folder names under the copy destination folder must not exceed 254.

Creating the Sub-folder

A sub-folder can be created immediately below the folder specified as the copy destination. Clicking the [Make Folder] button causes the dialog shown below to appear. Input the name of the new folder into the edit box in the center of the dialog, and then click [OK] to create it.

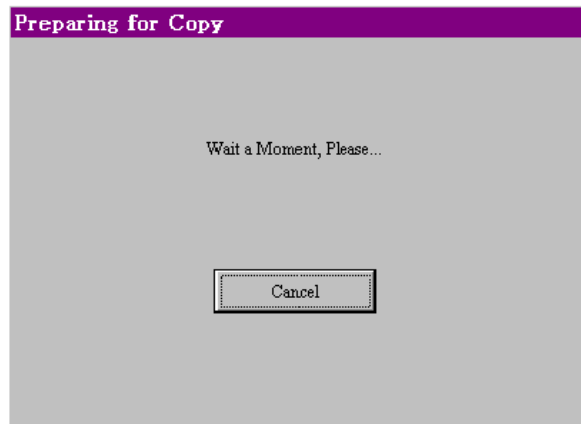


The following rules apply when creating a sub-folder.

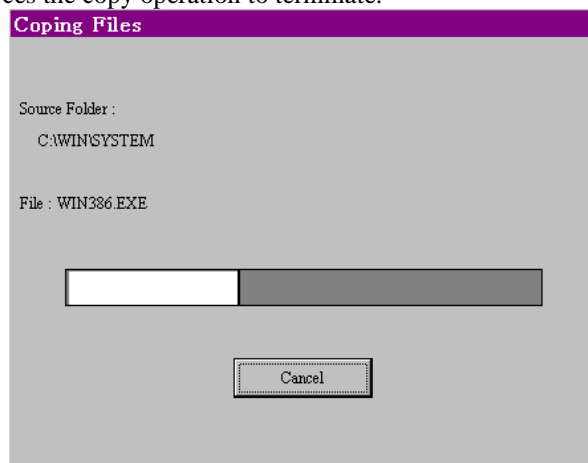
- The name of the sub-folder can be up to 254 characters long.
- Its absolute path must not exceed 259 characters.

Copy Operation

Clicking the [Start Copy] button in the center of the Main Window starts the copy routine. First, the dialog shown below appears as the system checks the copy destination disk. Clicking the [Cancel] button aborts the check.



The dialog shown below appears to indicate that actual copying is being performed. This dialog shows the name of the file being copied, the path to the folder from which the file is being copied, and an indicator that shows the progress of the copy operation. Pressing the [Cancel] button at the bottom of the dialog forces the copy operation to terminate.



The dialog shown below appears when the copy operation ends normally or when it is interrupted for some reason. This dialog shows the number of files that were copied. Click [OK] to return to the Main Window.



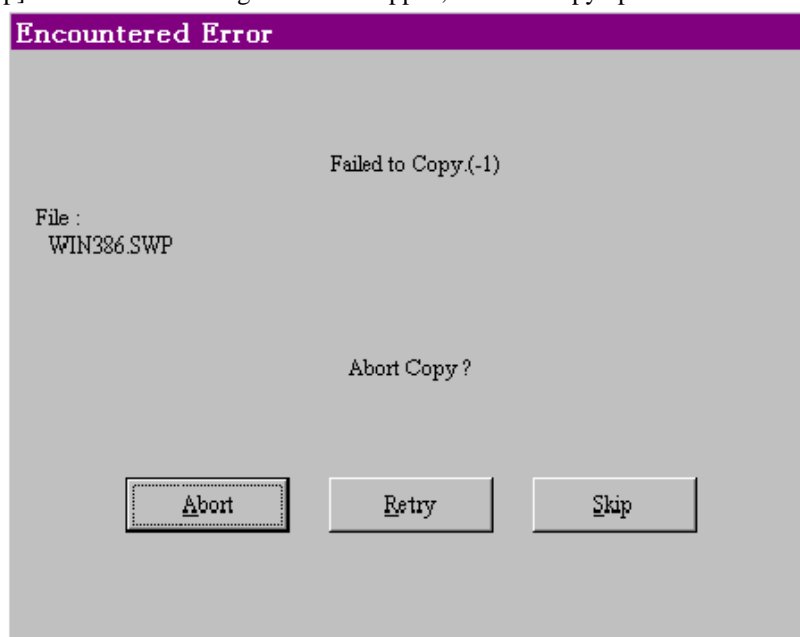
Copy Failure

The dialog shown below appears whenever the copy operation fails for some reason.

Clicking [Abort] quits the copy operation and returns to the Main Window.

[Retry] tries copying the same file again.

[Skip] causes the offending file to be skipped, with the copy operation continuing from the next file.

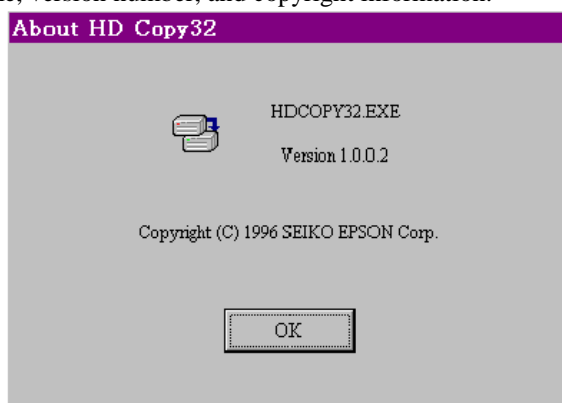


The following is a list of the error codes that appear in the top line of the above dialog, along with each of their meanings.

- 1: Copy source file could not be opened.
- 2: Copy source file could not be created.
- 3: Copy source file could not be read.
- 4: Copy source file could not be written to.
- 5: Number of read bytes is different from number of write bytes.

Displaying Program Information

Clicking the [About] button in the Main Window displays the dialog shown below. This dialog shows file name, version number, and copyright information.



Clicking [OK] closes this dialog and returns to the main Window.

Error Messages

Generation of an error during the copy operation causes the Encountered Error dialog to appear. One of the following error messages appear in the Encountered Error dialog when an error occurs.

- **Description of Path is Wrong.**
The specified path is not an absolute path.
- **Path String is Too Large.**
The specified path has more than 259 characters.
- **Cannot Specify Same Drive as Source and Destination.**
The same drive name is specified as both the source and destination path.
- **Failed to Change Current Folder.**
The current folder could not be changed.
- **Failed to Change Current Drive.**
The current drive could not be changed.
- **Failed to Allocate Memory.**
Allocation of a search or read buffer could not be performed.
- **File Which Has Same Name as Folder Exists.**
A file with the same name as a name you are trying to assign to a new folder already exists.
- **Folder Which Has Same Name as File Exists.**
A folder with the same name as a file you are trying to copy already exists.
- **Failed to Make Folder.**
Folder could not be created.
- **Destination is not Large Enough to Copy File.**
The amount of space available on a disk is less than the size of the file being copied to it.