

Memory Switch Setting Utility User's Manual

402164000

Rev. A

Table of Contents

| | | |
|-----|---|----|
| 1 | Introduction | 2 |
| 1.1 | Purpose of This Manual and Target Users | 2 |
| 1.2 | Composition of This Manual | 2 |
| 1.3 | Note in the case of using this utility | 2 |
| 1.4 | System operating environment | 2 |
| 2 | Installation | 3 |
| 2.1 | System Requirement | 3 |
| 2.2 | Installation | 3 |
| 2.3 | Uninstallation | 5 |
| 3 | The basic operation of application | 7 |
| 3.1 | Confirm the communication conditions with a printer | 7 |
| 4 | Printer Status | 9 |
| 4.1 | Operation: Get status, Set status, Save status, Read status, and Initial settings | 9 |
| 4.2 | Memory Switch Setting | 10 |
| 4.3 | Dip Switch | 10 |
| 4.4 | Communication Conditions/User NV/User NVG | 11 |
| 4.5 | Customize Value | 12 |
| 4.6 | Reset-Possible Maintenance Counter | 12 |
| 4.7 | Paper Layout Setting | 13 |
| 5 | Printer Sequence | 14 |
| 5.1 | Paper layout automatic setting | 14 |
| 5.2 | Head Nozzle check pattern printing | 15 |
| 6 | Appendix | 16 |
| 6.1 | Error Messages | 16 |
| 6.2 | Information of this utility's version | 16 |

1 Introduction

1.1 Purpose of This Manual and Target Users

This manual explains about installation and operation of Memory switch Setting Utility. This manual is for the person in charge of the TM Printer operator.

1.2 Composition of This Manual

Chapter 2 explains the method of installing the utility.

Chapter 3 explains the method of operating the utility.

Chapter 4 explains the error messages and how to solve the problem.

Chapter 5 explains the information of the utility's version.

1.3 Note in the case of using this utility

- In this utility, the flow control of XON/XOFF is not supported. So you need to change the printer's setting to the DTR/DSR control.
- Parallel port uses the LPT1 with the computer, but parallel port does not operate when printer driver is mounted to the LPT1 in Windows NT.
- In case that the utility (English) is installed to the OS (Japanese), the characters occasionally display missing on the display. Then you need to change the area setting of the control panel in the computer.
- It occasionally happens that Touch Panel does not function when this utility is performed with EPSON IM-310 or EPSON SR-600. Then you need to get EPSON Touch Panel Driver, and install it in the computer.
- In case that the product "TM-T90" carries TM-T88II compatible mode by setting of Memory switch, you need to select the TM-T90 (TM-T88II Compatible mode) at the "Device Selection" on the utility's screen.

1.4 System operating environment

This application operates only on the operating system below.

- Windows 95, 98
- Windows NT4.0

2 Installation

This chapter explains how to install the Memory Switch Setting Utility ("TMSSUTL"). Read this chapter when you install it.

2.1 System Requirement

Be sure to confirm the system requirement (OS, HDD space) before installing TMSSUTL.

For more details, refer to the release note.

2.2 Installation

Follow the steps below to install TMSSUTL.

2.2.1 Start your operating system.

Run "SETUP.EXE" in the setup disk.

The install program of TMSSUTL starts.

2.2.2 Welcome

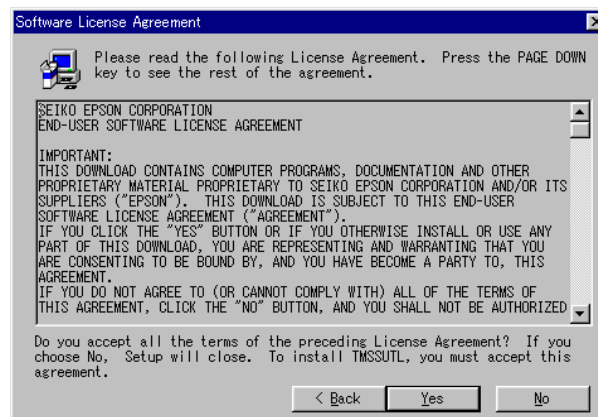


Be sure to read it.

To continue installing, click [Next].

* Click [Cancel] to stop installation.

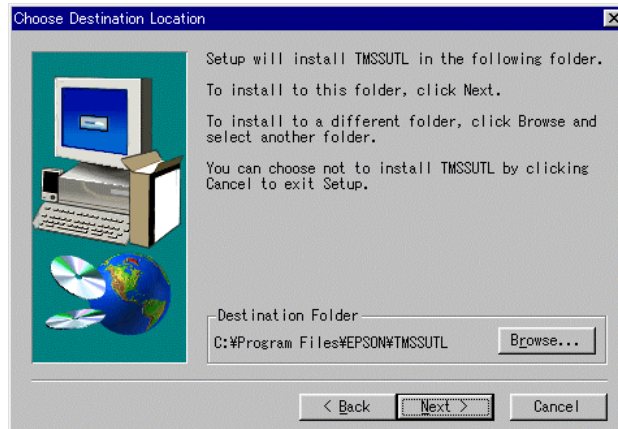
2.2.3 Software License Agreement



Be sure to read it.

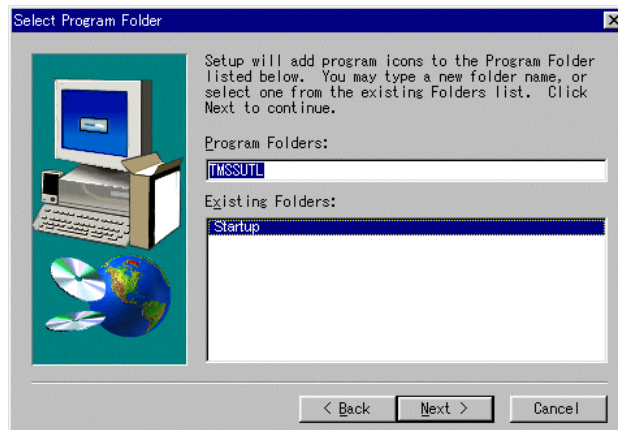
To continue installing, click [Yes] or [No].

2.2.4 Choose Destination Location



- Click [Next] if you want to install the utility in the folder displayed in the Destination Folder. TMSSUTL is installed in the folder you set here.
- To change the destination folder.
Click [Browse...] to select a new folder. Click [Next] to continue installing.
- * Click [Cancel] to stop installation.

2.2.5 Select Program Folder



- To add program icon to the folder displayed in the Program Folder, click [Next].
- To change the program folder, execute either of the following.
 - Enter the new folder name in the Program Folder text box.
 - Select the folder from the Existing Folders list.
- Click [Next] to continue installation. The TMSSUTL icon will be added to the folder displayed in the Program Folder.
- * Click [Cancel] to stop installation.

2.2.6 Copy of programs

- When you click [Next] in the Select Program Folder dialog box, the installation will start.
- * Follow the message if it appears instructing you to replace the setup disk.

2.2.7 Setup Complete



When the installation is completed, the Setup Complete dialog box appears. Click [Finish] to complete the installation.

2.3 Uninstallation

You can uninstall TMSSUTL using Add/Remove Programs in the Control Panel. Follow the steps below to uninstall TMSSUTL.

2.3.1 Control Panel

Double-click the Control Panel icon.

2.3.2 Add/Remove Programs Properties

Run Add/Remove Programs that is located in the Control Panel of your operating system.

2.3.3 Select TMSSUTL

Select TMSSUTL from the list.

2.3.4 Add /Remove

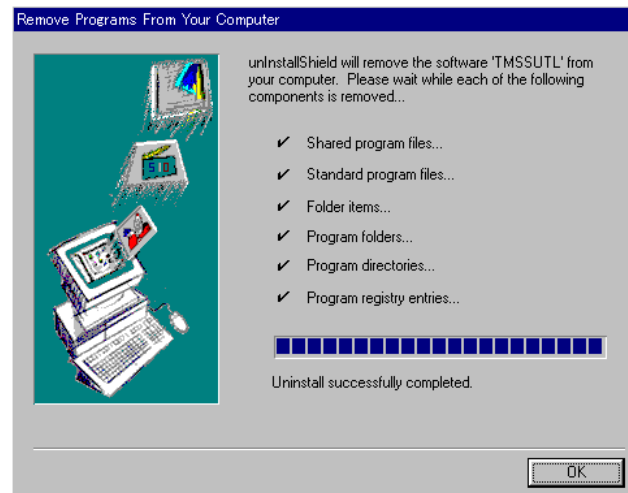
Click [Add/Remove].

2.3.5 Confirm the file deletion

If the message appears, click [Yes] to delete TMSSUTL.

* If you select [No], the uninstallation will be canceled.

2.3.6 Remove Programs From Your Computer



The program is uninstalled automatically.
Click [OK].

2.3.7 Exit

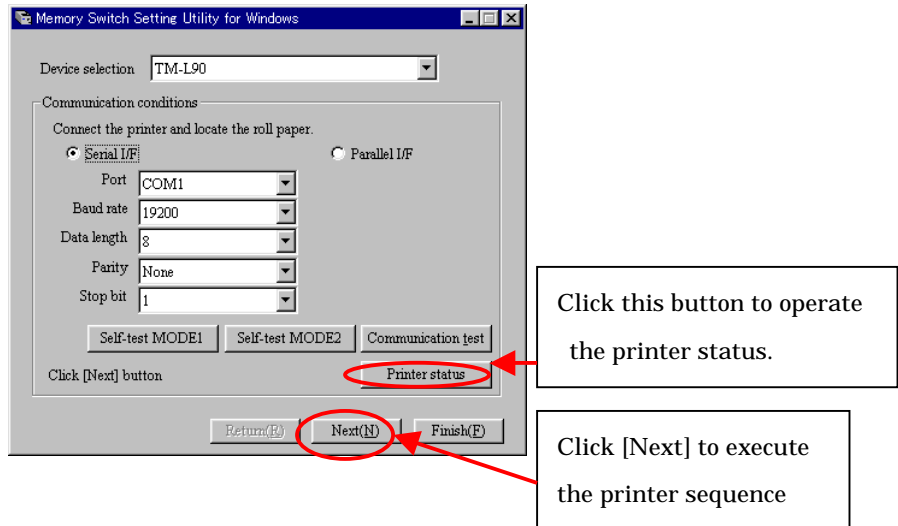
Close all open dialog boxes.

3 The basic operation of application

This chapter explains the operation of Memory Switch Setting Utility (TMSSUTL).

3.1 Confirm the communication conditions with a printer.

When this utility is operated, the Communication conditions dialog box appears.



You can confirm whether the computer can communicate with a printer by execution the communication test in this dialog.

Functions

Device selection

Select the model that is connected.

- Port

Select the port where the printer is connected.

- Baudrate

Select the same value as the baudrate set in the printer.

- Data length

Select the same value as the data length set in the printer.



Note:

Select only 8 bits to control the printer.
When the printer is set in 7 bits, change to 8 bits.

- Parity

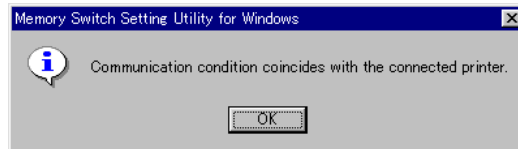
Select the same value as the parity set in the printer.

- Stop bit

Select the value "1".

Communication test(T)

Confirm whether the connected printer is TM or not.
Normally the following message appears.



Note:

To execute the communication test, roll paper is inserted in the TM printer and the printer is ready to start printing. It checks first whether cable connection a printer has been performed or the power supply of a printer is turned on it.

Self-test MODE1

Execute the self-test.

Self-test MODE2

Execute the print of the roll pattern of self-test.



Note:

You can not execute the self-test unless the setting of communication conditions is correct. To execute the self-test, you confirm that communication conditions is correct after execute the communication test.

Printer status

When this button is clicked, the “printer status selection” screen that the function peculiar to a printer is executed on appears. And execute the acquisition, setting, editing, and saving for the status set to the printer.

Next(N)

A [next] button is displayed when the selected printer is special.

When this button is clicked, the “printer sequence selection” screen that the function peculiar to a printer is executed on appears.

Finish(F)

Terminate TMSSUTL.



Note:

- The values set when TMSSUTL is ended can be used for the next time you start TMSSUTL.
- In this utility, the flow control of XON/XOFF is not supported. You need to set to the DTR/DSR control by the printer's DIP switch or the Memory switch when using the printer.

4 Printer Status

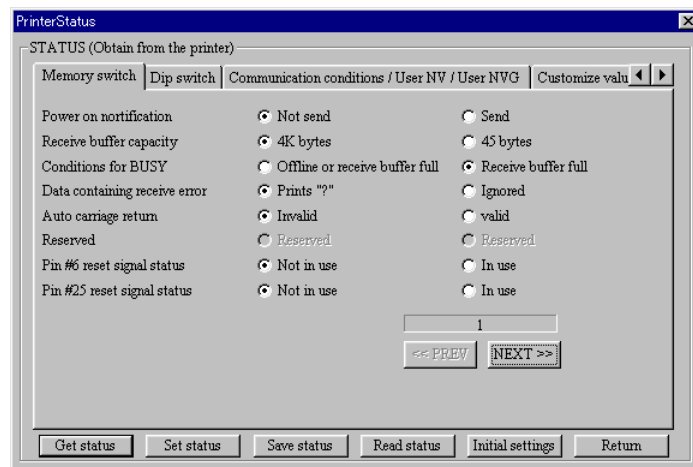
When the [Printer status] button is selected in the Communication setting dialog box, the Printer Status dialog box appears.



Note:

- A screen is displayed only if your printer has that function.
- This utility has some functions that are not used with certain printers or certain firmware versions.

4.1 Operation: Get status, Set status, Save status, Read status, and Initial settings



In this screen, you can acquire or update the value saved in the printer and the value of switches. Also, you can save the acquired value to the file and read that file.

Functions

Get status

Acquire the set value of the connected printer and display them on the screen.

Set status

Set the value that can be updated in the value displayed on the screen to the printer.

Save status

Save a set value of the printer displayed on the screen to the file.

Read status

Read the set value saved in the file and display them on the screen.

Initial settings

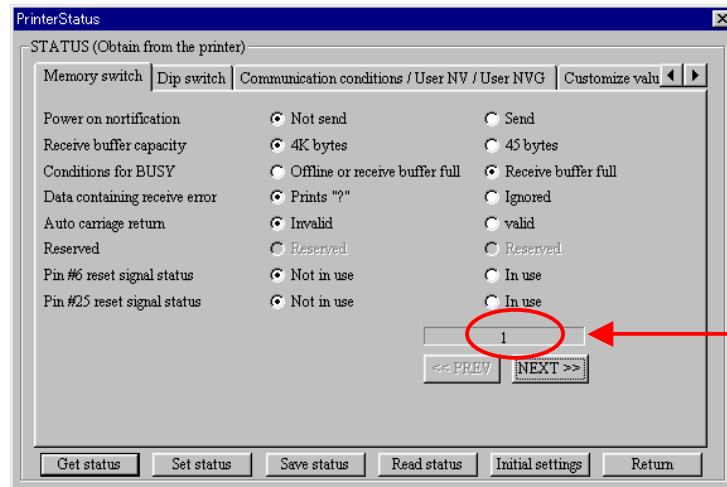
Display the default values for each standard specification printer model on the screen.

- If the paper width is 58mm, it is displayed as 80mm, not 58mm on the screen.

Return

The data displayed on the Printer status screen is canceled, and return to the Communication setting screen.

4.2 Memory Switch Setting



This is the Memory switch number.

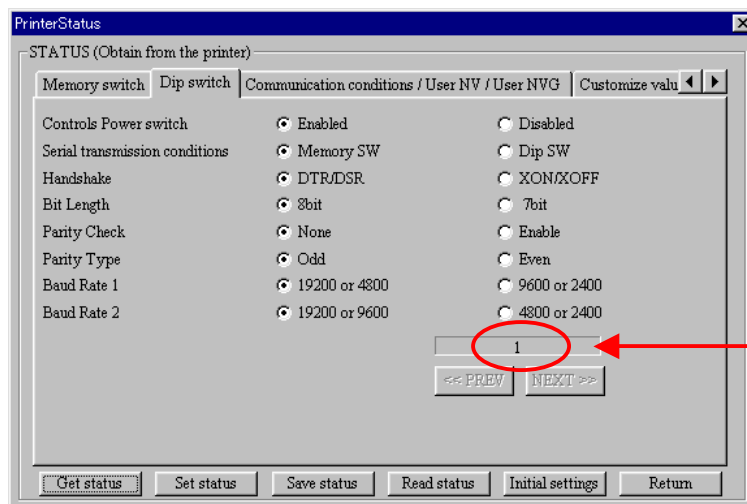
A set value can be changed by click the “set status” button. When the printer has some Memory switch, you can select the Memory switch number by using << PREV button and NEXT>> button displayed on the screen. The displayed item may differ depending on the printer model.



Note:

The repealed setting may express by selection the interface. About the kind of the confirmed setting, refer to the User's Manual with which the printer was enclosed in the box.

4.3 Dip Switch



This is the DIP switch number.

A set value of the DIP switch cannot be changed. The displayed item may differ depending on the printer model.

Like baudrate 1 and baudrate 2, the combination two or more items may express one setting value. The baudrate setting is 19200 bps on the figure. That is, the value which overlaps in the checked item is setting value.



Note:

The repealed setting may express by selection the interface. About the kind of the confirmed setting, refer to the User's Manual with which the printer was enclosed in the box.

4.4 Communication Conditions/User NV/User NVG

PrinterStatus

STATUS (Obtain from the printer)

Memory switch | Dip switch | **Communication conditions / User NV / User NVG** | Customize valu

Baud rate: 19200

Parity: None

Flow control: DTR/DSR

Data length: 8

User NV usage: 0 User NVG usage: 0

User NV remaining: 1024 User NVG remaining: 393216

Get status Set status Save status Read status Initial settings Return

The usage and remaining of user NV and user NV graphics area can be confirmed. The communication condition can be changed by push the “Set status” button. The displayed item may differ depending on the printer model.

Functions

- **Baudrate**
Displays the baudrate of the communication condition saved in the NV memory of the printer.
- **Parity**
Displays the parity of the communication condition saved in the NV memory of the printer.
- **Flow control**
Displays the flow control of the communication condition saved in the NV memory of the printer.
- **Data length**
Displays the data length of the communication condition saved in the NV memory of the printer.



Note:

- In this utility, the flow control of XON/XOFF is not supported. Set to the DTR/DSR control by the printer's Dip switch or the memory switch when using the printer.
- If the printer is connected with parallel interface, or operates by setting Dip switch in spite of being connected with serial interface, the printer operate without changing.
- If the communication conditions in the NV memory are changed, the printer may not be able to communicate. When you changed the communication condition, back to the communication conditions dialog box again, and match the conditions.

User NV usage

Displays the usage of user NV memory.

User NV remaining

Displays the remaining of user NV memory.

User NVG usage

Displays the usage of user NV graphics memory.

User NVG remaining

Displays the remaining of user NV graphics memory.

4.5 Customize Value

PrinterStatus

STATUS (Obtain from the printer)

Dip switch | Communication conditions / User NV / User NVG | **Customize value** | Reset-possible ◀ ▶

User NV memory capacity: 1KB

User NV graphics memory capacity: 384KB

Print density: 105%

Print speed: level 9

Print control method: Non-divided energizing

Paper type(mono or color): Single color

Paper width: 80

1/1

<< PREV NEXT >>

Get status Set status Save status Read status Initial settings Return

The value of this screen can be changed by push the “Set status” button. The displayed item may differ depending on the printer model.



Note:

You need to set the “user NV memory capacity” and “user NV graphics memory capacity” on this screen after you confirm a combination in which those setting is possible.

4.6 Reset-Possible Maintenance Counter

The <<PREV button or NEXT>> button is displayed on the screen when the items can not be displayed.

PrinterStatus

STATUS (Obtain from the printer)

Customize value | **Reset-possible maintenance counter** | Paper layout ◀ ▶

Check the maintenance counter to be reset to update the status.

☐ Number of line feeds: 144456

☐ Head current carrying count: 60348

☐ Autocutter: 116

☐ Working Time: 5

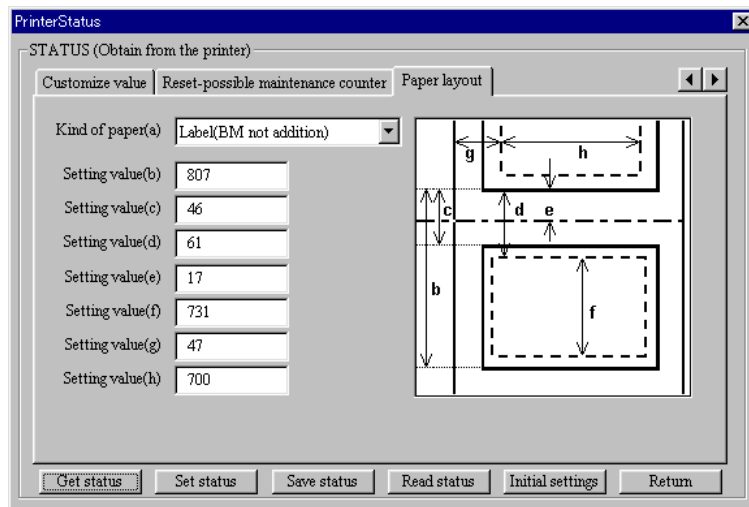
1/1

<< PREV NEXT >>

Get status Set status Save status Read status Initial settings Return

A check marked maintenance counters can be reset by push the “Set status” button. The displayed item may differ depending on the printer model.

4.7 Paper Layout Setting



- King of paper (a)

The kind of paper is displayed. And the paper layout setting can be cleared when the "Clear" is selected in this item.

Setting value (b)~(h)

The length of the portion illustrated in the paper image area that is on this screen is displayed per 0.1 mm.

Setting image of paper

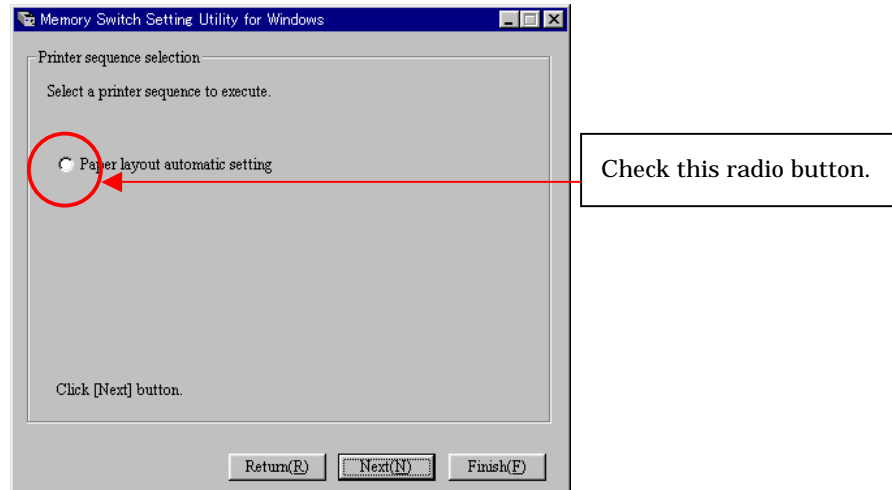
The bit map data corresponding to the kind of each paper is displayed in this area. This image is changed after the status is got, or the other kind of paper is selected on the screen.

5 Printer Sequence

Memory Switch Setting Utility can execute the following printer sequences.

5.1 Paper layout automatic setting

When the connected printer model is a ravel printer, displays the function in which the kind of paper can be change. When you click [Next] in the “Communication conditions” screen, the Printer sequence selection screen appears.



By this function, you can make the printer recognized what the kind of paper when the other paper is inserted. Necessary information to execute “paper layout automatic setting” is displayed on the screen. Read the information and the click [Next] button.

Quit(Q)

Return to the Communication setting screen.

Next(N)

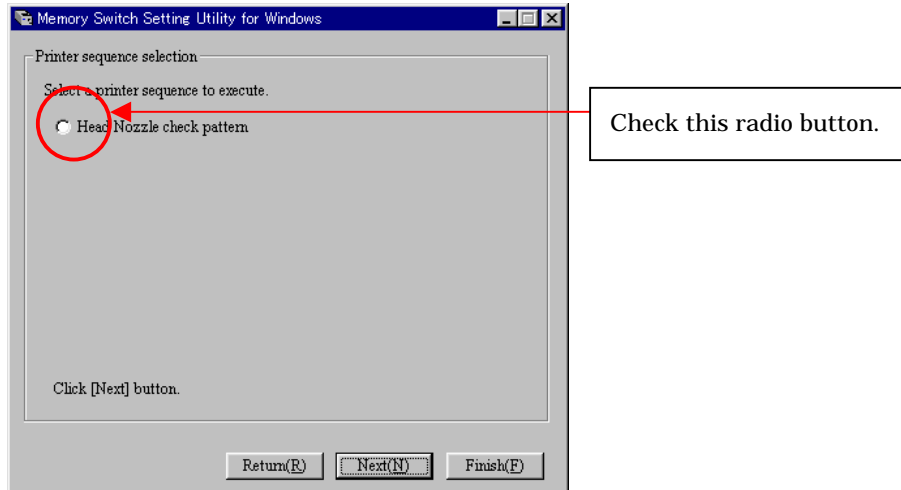
Go to the next operating screen.

Finish(F)

Stop the operation and terminate TMSSUTL.

5.2 Head Nozzle check pattern printing

When the connected printer model is a inkjet printer, displays the function by which you can confirm whether each nozzle of Print-Head operates normally. When you click [Next] in the “Communication conditions” screen, the Printer sequence selection screen appears.



Necessary information to execute the Printing of the Head Nozzle check pattern is displayed on the screen. Read the information and the click [Next] button.



Note:

When you are not satisfied with the print result, clean the nozzle according to the on-screen information and print again.

Quit(Q)

Return to the Communication setting screen.

Next(N)

Go to the next operating screen.


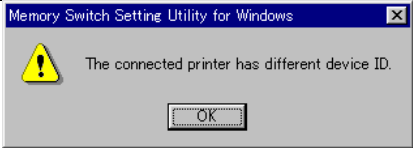
Finish(F)

Stop the operation and terminate TMSSUTL.

6 Appendix

6.1 Error Messages

You might see the following messages while using Memory Switch Setting Utility (TMSSUTL).

| Class | Error message screen | What to do |
|---------------|---|---|
| Communication |  | <p>Make sure of the following points and then click [Retry].</p> <ul style="list-style-type: none">- Does the communication parameter match the printer?- Is the I/F cable surely connected?- Is the printer turned on?- Is the printer online? <p>Click [Cancel] to cancel the operation.</p> |
| Command line |  | <p>Is the printer model selected on the screen in agreement with the model of the printer used now?</p> <p>Confirm the printer model.</p> |

6.2 Information of this utility's version

The menu is displayed when the icon on title bar which is above this utility's dialog is clicked. See the Dialog displayed by selecting "Version information (TMSSUTL)" on the menu.