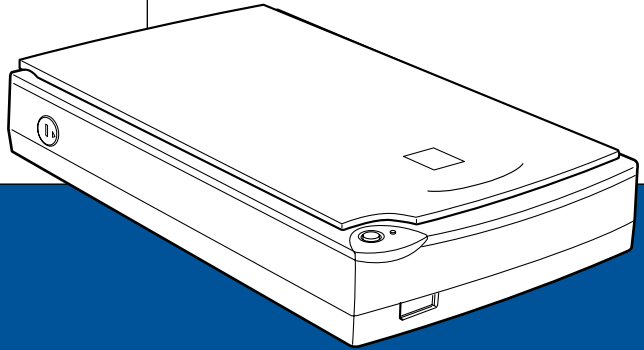


EPSON

Color Image Scanner

This is an Acrobat version of the Online Reference Guide in HTML format supplied on CD with the product.



Perfection 1200
Software Reference Guide

EPSON® Scanner Software for the *Perfection* 1200

All rights reserved. No part of this publication may be reproduced, stored in a retrieval system, or transmitted in any form or by any means, electronic, mechanical, photocopying, recording, or otherwise, without the prior written permission of SEIKO EPSON CORPORATION. No patent liability is assumed with respect to the use of the information contained herein. Neither is any liability assumed for damages resulting from the use of the information contained herein.

Neither SEIKO EPSON CORPORATION nor its affiliates shall be liable to the purchaser of this product or third parties for damages, losses, costs, or expenses incurred by the purchaser or third parties as a result of: accident, misuse, or abuse of this product or unauthorized modifications, repairs, or alterations to this product.

SEIKO EPSON CORPORATION and its affiliates shall not be liable against any damages or problems arising from the use of any options or any consumable products other than those designated as Original EPSON Products or EPSON Approved Products by SEIKO EPSON CORPORATION.

EPSON is a registered trademark of SEIKO EPSON CORPORATION.

IBM and PS/2 are registered trademarks of International Business Machines Corporation.

Macintosh is a registered trademark of Apple Computer, Inc.

Microsoft and Windows are registered trademarks of Microsoft Corporation in the United States of America and other countries.

Presto! is a trademark of NewSoft Technology Corporation.

General Notice: Other product names used herein are for identification purposes only and may be trademarks of their respective companies.

Copyright © 1999 by SEIKO EPSON CORPORATION, Nagano, Japan.



Printed on Recycled Paper.

Reference Guide

Contents

Introduction

Features	1
About This Guide	2

Chapter 1 Scanning Basics

Selecting a Menu	1-2
Easy menu	1-2
Advanced menu	1-3
Optimizing Image Scanning	1-4
Manually Optimizing Images	1-5
Displaying the Preview image	1-6
Adjusting the Highlight Setting	1-7
Adjusting the Shadow Setting	1-8
Adjusting the Gamma Setting	1-9
Applying a Preset Tone Curve	1-10
Adjusting the Gray Balance Intensity Setting	1-13
Adjusting the Saturation Setting	1-15
Using the Tone Curve	1-15
Saving your own tone curve	1-18
Deleting a customized tone curve	1-19
Closing the Tone Correction dialog box	1-19
Optimizing OCR Scanning	1-20
Scanning Text	1-20
Improving Character Recognition	1-20
If you still have problems	1-21
Potential Text Recognition Problems	1-22

Chapter 2 Understanding EPSON TWAIN Features

Overview	2-2
Scanning From the Easy Menu	2-3

Scanning From the Advanced Menu	2-4
Previewing Images	2-5
Document Source	2-7
Image Type	2-8
Image Type list	2-8
Image Type button	2-9
Destination	2-13
Destination list	2-13
Destination button	2-14
Unsharp Mask	2-15
Source and Target image sizes	2-16
Image Controls	2-18
Tone Correction	2-20
Color Adjustment	2-23
Auto Exposure	2-24
Reset Button	2-25
Auto Locate	2-25
Settings	2-27
Configuration	2-29

Chapter 3 Using EPSON Instant Photo Print

Features	3-2
Opening EPSON Instant Photo Print	3-3
Before Scanning and Printing	3-5
Placing film and photos	3-5
Loading paper in your EPSON printer	3-8
Scanning and Printing	3-8
Scanning and Printing Using Start Button	3-10

Chapter 4 Calibrating Your System

Overview	4-2
Calibrating Your Screen	4-2
For Windows 98 users	4-2
For Windows 95 and NT 4.0 users:	4-4
For Macintosh users	4-6

Using ICM/sRGB, ICM (For Windows 98/95 Users)	4-6
For Windows 98 users	4-7
For Windows 95 users	4-7
Using ColorSync (For Macintosh Users)	4-8

Chapter 5 Troubleshooting

Problems and Solutions	5-2
Scanning Problems	5-2
Image is dark, with little or no detail.	5-2
You cannot scan an image or you only get a few dots for the scanned image	5-3
Moiré (cross-hatch) patterns appear in the scanned image	5-3
Scanned image is too large.	5-3
Colors differ from the original.	5-4
Poor character recognition during OCR scanning.	5-4
Software Operation Problems	5-5
You cannot start EPSON TWAIN.	5-5
You can't select optional equipment (Auto Document Feeder or Film Adapter).	5-5
Pressing the Start button does not start Scanning.	5-5

Glossary

Index

Introduction

Features

The CD-ROM that comes with your scanner contains the EPSON scanner software suite, including EPSON TWAIN and EPSON Instant Photo Print. The software suite is the perfect companion for your EPSON scanner. Using your scanner and the software from the CD-ROM, you can scan images in color, grayscale, or black and white, and either save them as files or print them out. Other software such as EPSON Scanner Monitor and PageManager for EPSON support the Start Button feature to make scanning much easier.

- ❑ The software supports the following EPSON scanners:
EPSON Perfection 1200S/1200U/1200PHOTO
- ❑ EPSON TWAIN directly controls all of the features of your EPSON scanner. This program is the standard cross-platform interface for other application programs.
- ❑ With EPSON Instant Photo Print, you can easily scan and print photos in combination with your EPSON printer.

The CD-ROM also contains other applications that let you use your scanner in exciting new ways. For detailed information, refer to the supporting documentation.

- ❑ EPSON Scanner Monitor allows your scanner to access software that supports the Start Button feature.

- ❑ EPSON Screen Calibration utility allows you to calibrate your scanner and display monitor to reproduce images identical to the originals.
- ❑ PageManager for EPSON is TWAIN-compliant software that supports the Start Button feature. This feature allows you to scan and send data to a target application with a single push of the Start button. For more information on PageManager, see your PageManager documentation.

About This Guide

The information in this guide is divided into six chapters, with a glossary and index provided for your reference.

- ❑ Chapter 1 explains the basic steps of scanning.
- ❑ Chapters 2 provides a complete description of EPSON TWAIN features. Refer to Chapter 2 when making scanning settings.
- ❑ Chapter 3 explains how to scan photos and print using EPSON Instant Photo Print.
- ❑ Chapter 4 explains how to calibrate your monitor to match your EPSON scanner. If you notice that colors on your screen or in your printout do not match the original image, see this chapter.
- ❑ Chapter 5 contains troubleshooting information. If your software does not operate properly or scanned images are not what you expect, see this chapter.

Notes contain important information and useful tips on operating your scanner or software.

To set up and use the scanner, see your scanner's *User's Guide*. EPSON TWAIN Online help can also provide you with information on making settings in EPSON TWAIN.

Chapter 1

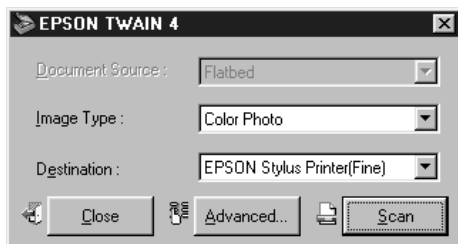
Scanning Basics

Selecting a Menu	1-2
Easy menu	1-2
Advanced menu	1-3
Optimizing Image Scanning.....	1-4
Manually Optimizing Images.....	1-5
Displaying the Preview image	1-6
Adjusting the Highlight Setting.....	1-7
Adjusting the Shadow Setting	1-8
Adjusting the Gamma Setting	1-9
Applying a Preset Tone Curve.....	1-10
Adjusting the Gray Balance Intensity Setting	1-13
Adjusting the Saturation Setting	1-15
Using the Tone Curve	1-15
Saving your own tone curve	1-18
Deleting a customized tone curve	1-19
Closing the Tone Correction dialog box	1-19
Optimizing OCR Scanning.....	1-20
Scanning Text	1-20
Improving Character Recognition	1-20
If you still have problems.....	1-21
Potential Text Recognition Problems.....	1-22

Selecting a Menu

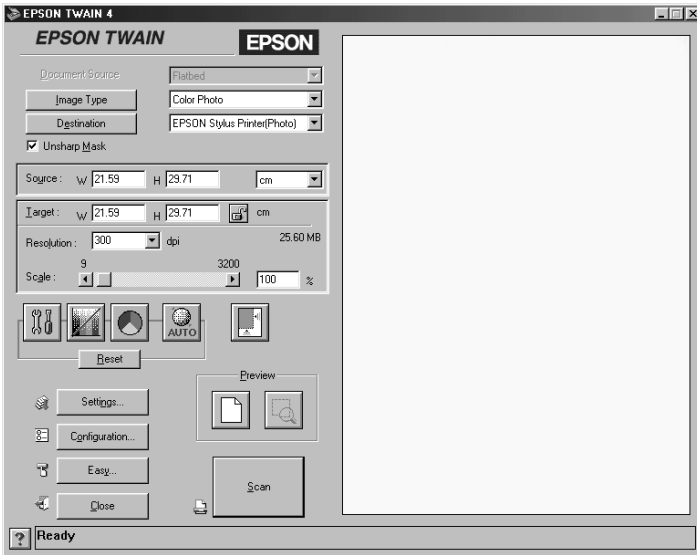
EPSON TWAIN offers two different levels of menus to enhance or simplify the number of options you can control.

Easy menu



In the Easy menu, only the minimum necessary options are displayed. If you want to scan quickly and easily without changing any complex settings, select the Easy menu. To have more control over your scanning settings, click the Advanced button to open the Advanced menu.

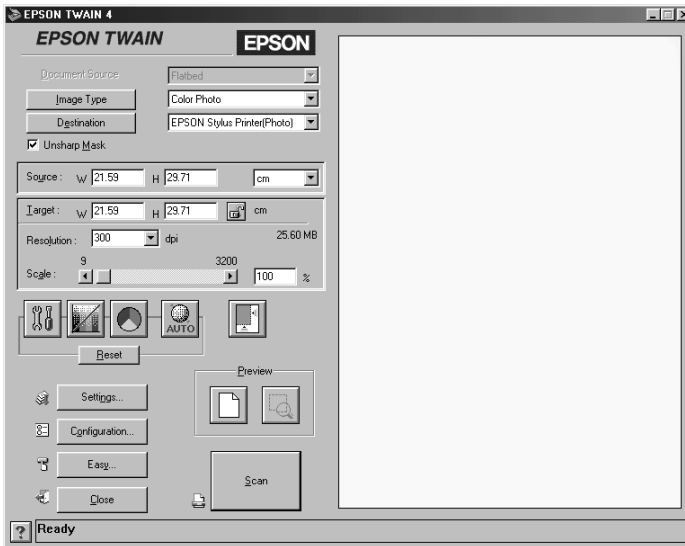
Advanced menu



In the Advanced menu, there are many more options available to give you greater control over your scanning. If you want to re-size, scale, sharpen, correct, enhance or preview your images before scanning them, select the Advanced menu. If you don't need all the options that the Advanced menu provides, click the Easy button to open the Easy menu.

Optimizing Image Scanning

EPSON TWAIN can automatically adjust and optimize the exposures and colors of scanned images during scanning. You can also make adjustments manually with the powerful image quality adjustment tools in EPSON TWAIN's Advanced menu. This section provides general information on optimizing images with these tools.



EPSON TWAIN Advanced menu

Note for Macintosh users:

Most illustrations shown in this section are for Windows, so they may vary in appearance from what actually appears on your screen. The instructions should be the same, except as noted.

Manually Optimizing Images

To optimize images manually, adjust the following EPSON TWAIN settings in the order specified below:

Adjust the brightness and contrast

1. Adjust the Highlight and Shadow settings in the Image Controls dialog box. See “Adjusting the Highlight Setting” on page 1-7 and “Adjusting the Shadow Setting” on page 1-8.
2. Adjust the Gamma setting in the Image Controls dialog box. See “Adjusting the Gamma Setting” on page 1-9
3. Adjust the tone curve with a predefined tone correction setting in the Tone Correction dialog box. See “Applying a Preset Tone Curve” on page 1-10.

Make color adjustments

4. Adjust the Gray Balance Intensity setting in the Color Adjustment dialog box. See “Adjusting the Gray Balance Intensity Setting” on page 1-13.
5. Adjust the Saturation setting in the Color Adjustment dialog box. See “Adjusting the Saturation Setting” on page 1-15.
6. Manually adjust the tone curve for individual colors in the Tone Correction dialog box. See “Using the Tone Curve” on page 1-15.

To make the following adjustments in EPSON TWAIN, you need to display preview image in the Preview window. See the following section.

Displaying the Preview image

The Preview window on the right side of the EPSON TWAIN Advanced menu window shows you how your adjustments will affect the image as you make them. The Preview window is also the starting point for activating the Image Controls and Color Adjustment dialog boxes that contain tools for optimizing your image.

Note:

See “Previewing Images” on page 2-5 for Preview window options, and “Configuration” on page 2-29 for information about how to control preview image quality.

1. After selecting the Document Source, Image Type, and Destination, click Preview to start prescanning if no image is displayed in the preview window. A preview image of the document appears on your screen. When the Automatic Preview check box in the Configuration dialog box is selected, a preview image is automatically displayed after EPSON TWAIN is started.

Note:

Make sure the Fast Preview check box is cleared in the Configuration dialog box to ensure a high-quality preview.

2. Click one of the buttons below to open the dialog box with the image optimization tools you need.



Image Controls button



Color Adjustment button

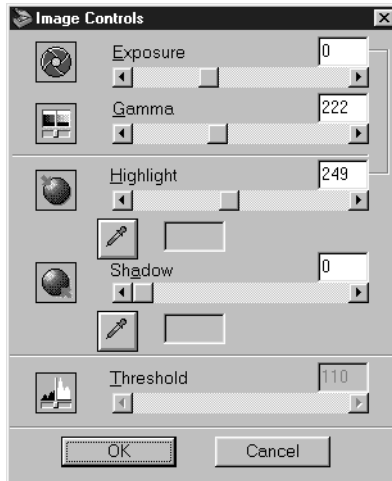


Tone Correction button

Adjusting the Highlight Setting

Highlights are the brightest areas of an image.

1. In the Image Controls dialog box, click the eyedropper button under Highlight.



The pointer changes to an eyedropper, with movement restricted to within the Preview window.

2. Move the eyedropper to the location you want to select as the highlight point and click it.

The brightness of the pixel at the point you click is set as the highlight level, and the other parts of the image are adjusted accordingly.

3. To change the highlight level (brightness) of the point you selected, move the Highlight slider left or right, or enter a value in the text box. You can enter a value between 61 and 490 for the highlight.

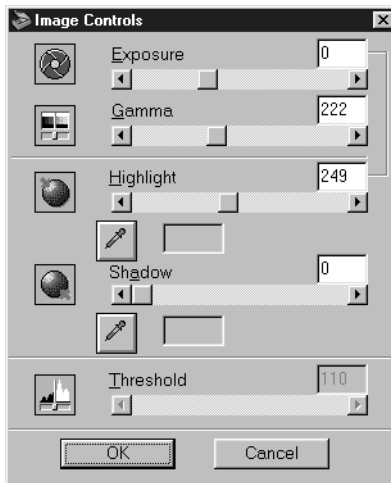
Note:

See “Image Controls” on page 2-18 for further information on adjusting the highlight level.

Adjusting the Shadow Setting

Shadows, the darkest areas of an image, are the opposite of highlights.

1. In the Image Controls dialog box, click the eyedropper button under Shadow.



The pointer changes to an eyedropper, with movement restricted to within the Preview window.

2. Move the eyedropper to the location you want to select as the shadow point, and then click.

The brightness of the pixel at the point you click is set as the shadow level, and the other parts of the image are adjusted accordingly.

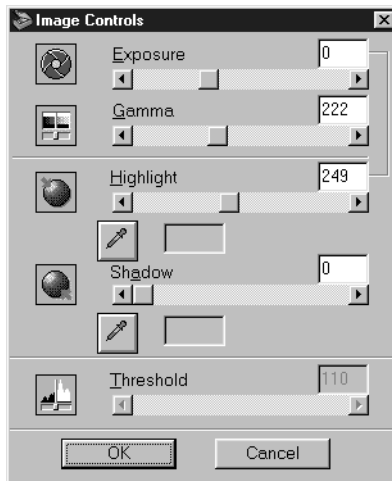
- To change the shadow level (darkness) of the point you selected, move the Shadow slider left or right, or enter a value in the text box. You can enter a value between 0 and 60 for the shadow.

Note:

See “Image Controls” on page 2-18 for further information on adjusting the shadow level.

Adjusting the Gamma Setting

Gamma is the difference in contrast between the light tones and dark tones of an image. Any change you make in the gamma level only affects the mid-tones of the image.



To change the gamma level of the image, move the Gamma slider left or right, or enter a value in the text box.

You can enter a value between 50 to 500 for the gamma.

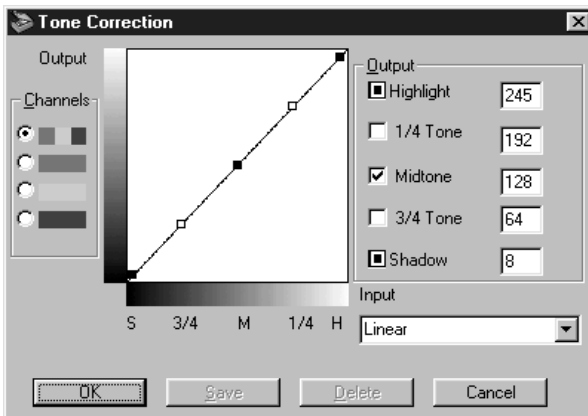
Note:

See “Image Controls” on page 2-18 for further information on adjusting the gamma level.

Applying a Preset Tone Curve

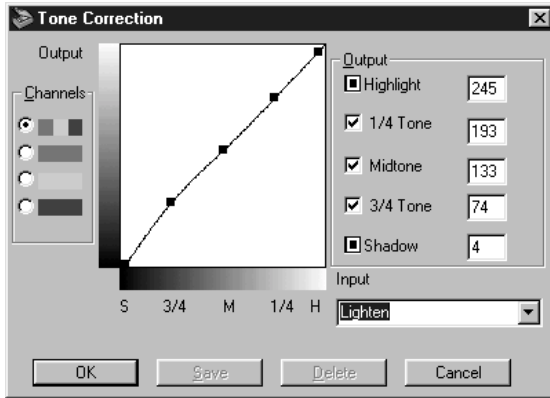
You can finely adjust the contrast within an image by applying one of the preset tone curves. This allows more control over the image when used in conjunction with the Auto Exposure settings in the Image Controls dialog box. The tone correction list in the Tone Correction dialog box provides the six most common tone correction curves, described below.

Linear



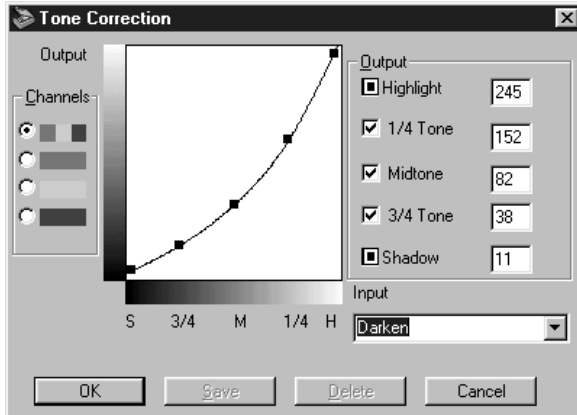
A linear tone curve has no tone correction. Use this setting if you are satisfied with the tone of the preview image.

Lighten



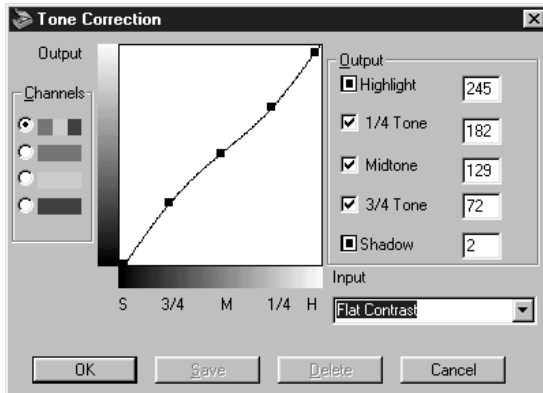
Adjusts darker images (like underexposed film) to make them slightly brighter.

Darken



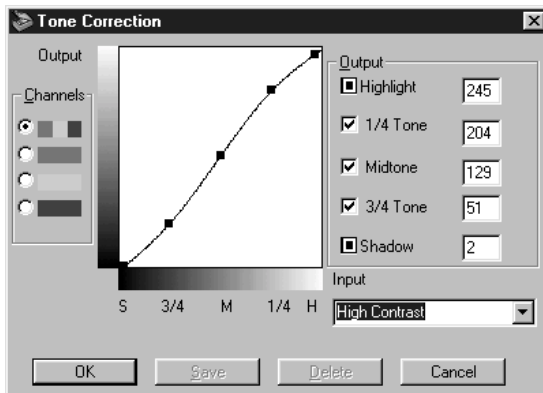
Adjusts brighter images (like overexposed film) to make them slightly darker.

Flat Contrast



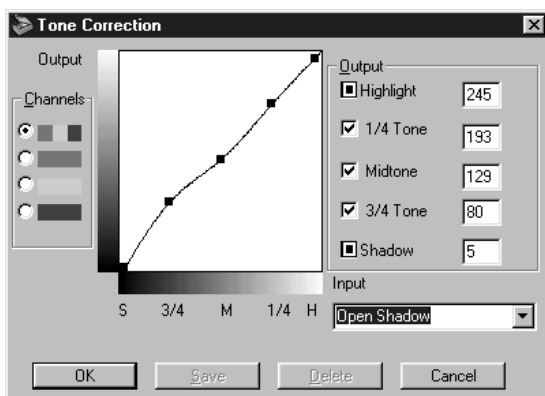
Flattens high contrast images to make them look more natural.

High Contrast



Increases the contrast of dull images.

Open Shadow



Improves details in the dark areas of images.

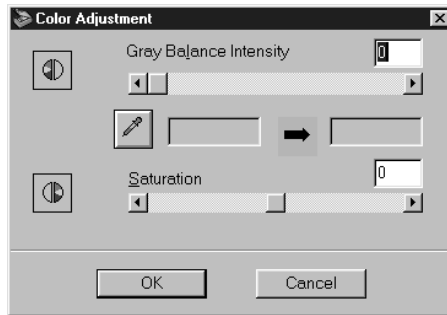
Note:

See "Using the Tone Curve" on page 1-15 and "Tone Correction" on page 2-20 for more information on tone correction.

Adjusting the Gray Balance Intensity Setting

Gray balance makes it possible to remove a cast (tint) from a specific color.

1. In the Color Adjustment dialog box, click the eyedropper button under Gray Balance Intensity.



The pointer changes to an eyedropper, with movement restricted to within the Preview window.

2. Move the eyedropper to a location that contains the color whose gray balance intensity you want to adjust, and then click.

The color you selected appears in the two boxes below the Gray Balance Intensity slider.

3. To change the gray balance intensity level of the color you selected, move the slider left or right, or enter a value in the text box.

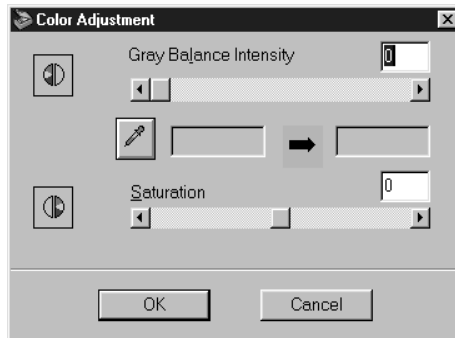
You can enter a value between 0 and 100. Changing the value causes the color in the right hand box to change accordingly. Your changes are also reflected in the image in the Preview window.

Note:

See “Color Adjustment” on page 2-23 for more information on adjusting the gray balance intensity level.

Adjusting the Saturation Setting

Saturation is the density of a color. Higher saturation makes the color appear richer, while lower saturation makes it appear paler.



To change the saturation level of the image, move the Saturation slider left or right, or input a value in the text box.

You can enter a value between -100 (lowest color density) and 100 (highest color density).

Note:

See "Color Adjustment" on page 2-23 for more information on adjusting the saturation level.

Using the Tone Curve

The tone curve provides you with a versatile means for adjusting the intensity of the colors of the image being scanned. You can adjust the shadow, mid-tone, and highlight values, which helps to ensure well-balanced coloring of the image.

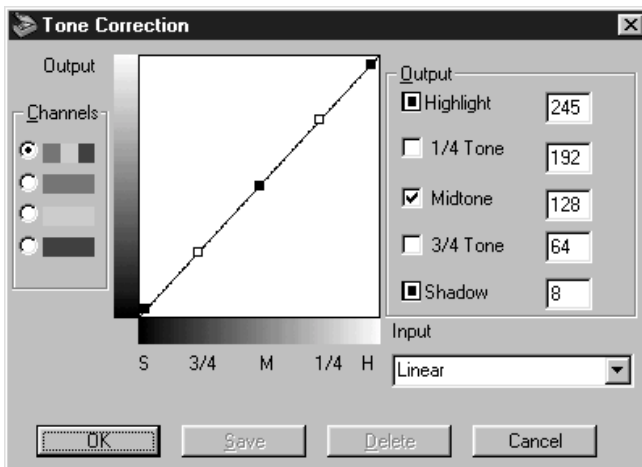
Note:

- ❑ Use of the tone curve is recommended for fine adjustments after you have previewed the image and adjusted the highlights and the shadows using Auto Exposure and the Image Controls dialog box. Use of the tone curve to make initial settings is not recommended.
- ❑ The Tone Correction button is unavailable whenever Black & White is selected as the Pixel Depth and None is selected for the Halftone.

The tone curve is located in the Tone Correction dialog box, which appears when you click the Tone Correction button in the EPSON TWAIN Advanced menu window. How to use each of the controls in the Tone Correction dialog box is described below.



Tone Correction button



Tone Correction dialog box

Channels

Click an option button under channels to select the color whose tone curve you want to adjust. When the master channel at the top is selected, your adjustments affect all three colors. Selecting one of the other channels allows you to adjust red, green, or blue only.

Tone curve editor

Moving the mouse pointer into the tone curve editor causes it to change to a finger. Use this pointer to drag any of the five points in the curve and change its shape. The x-axis of the curve is the brightness of the original (input values) while the y-axis is the brightness of the scanned image (output values).

To change the tone curve back to its default, select **Linear** in the tone correction list.

Output values

These are the current values for output data in accordance with the current locations of the points inside the tone curve editor. These values change when you drag points in the tone curve editor, or you can enter in values here to change the shape of the tone curve. Each value can be adjusted within the range of 0 to 255.

Note:

- Each output value name has a check box to the left of it. Highlight and Shadow are always selected, but you can select or clear 1/4 Tone, Midtone, and 3/4 Tone by clicking their check boxes.*
- When a value's check box is clear, its point on the tone curve editor automatically shifts to smooth out the tone curve when one of the other points is moved.*
- When a value's check box is selected, it means that its point is fixed and it will not shift when other points are moved.*

Tone correction list

Use this list box to select a preset tone curve. There are six preset tone curves shown below, and you can add your own curves to the list using the procedure in the next section, "Saving Your Own Tone Curve."

Curve Name	Highlight	1/4 Tone	Midtone	3/4 Tone	Shadow	Description
Linear	245	192	128	64	8	Default curve
Lighten	245	193	133	74	4	Lightens dark image
Darken	245	152	82	38	11	Darkens bright image
Flat Contrast	245	182	129	72	2	Reduces contrast
High Contrast	245	204	129	51	2	Increases contrast
Open Shadow	245	193	129	80	5	Lightens dark shadows

When you select a curve from the tone correction list, the settings in the Tone Correction dialog box change accordingly.

Saving your own tone curve

Use the following procedure to assign a name to a tone curve you customized and to save it for later use:

1. Make the tone curve settings you want. This causes the name shown in the tone correction list to change to User Defined.
2. After customizing the tone curve, enter a name for the new curve (up to 32 characters) in the list box.
3. Click **Save** to save your new tone curve settings under the name you specified.

Deleting a customized tone curve

Use the following procedure to delete a custom tone curve. You cannot delete the six preset tone patterns.

1. Use the tone correction list to select the custom tone curve you want to delete.
2. Click Delete.
3. In the confirmation dialog box that appears, click Yes to delete the curve.

Closing the Tone Correction dialog box

You can close the Tone Correction dialog box by clicking either OK or Cancel.

- Clicking OK applies the current Tone Correction dialog box settings and closes the dialog box.
- Clicking Cancel closes the dialog box without applying the current dialog box settings. Clicking the close button in the upper right corner of the dialog box has the same affect as clicking Cancel.

Optimizing OCR Scanning

This section gives you suggestions and recommended settings in order to improve OCR (optical character recognition) scanning results.

Scanning Text

Make sure you select OCR for both Image Type and Destination in the EPSON TWAIN dialog box.

If the recognition rate is not satisfactory with the default settings, follow these steps to change settings:

Improving Character Recognition

1. In the EPSON TWAIN Advanced menu window, make sure OCR is selected in both the Image Type and Destination list boxes. Then click the Image Type button. The Image Type dialog box appears.
2. In the Image Type dialog box, select None for B/W Option, and then click OK.
3. In the EPSON TWAIN Advanced menu window, click the preview button. Then click the Image Controls button to display the Image Controls dialog box.



Image Controls button

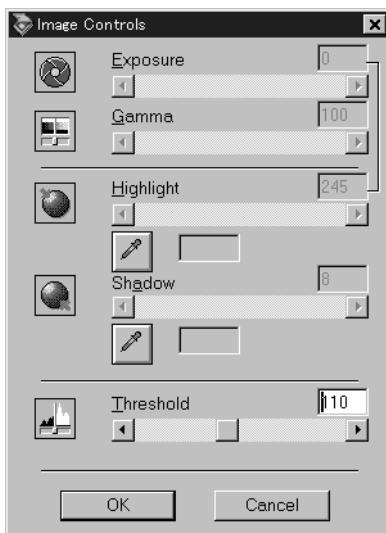


Image Controls dialog box

4. Use the Threshold slider to change the threshold value, monitoring the results of your changes in the Preview window. Adjusting the threshold value can make it easier for OCR to recognize characters.

If you still have problems...

1. In the EPSON TWAIN Advanced menu window, increase the Resolution value to 400. Remember that scanning at higher resolution takes longer and may not increase the recognition rate much.
2. If you still have problems, try using the enhancement tools in your OCR software to make adjustments.

Potential Text Recognition Problems

The quality of the text in your original document greatly affects OCR results.

The following types of originals can make recognition difficult and should be avoided if possible:

- Items that have been copied from other copies
- Faxes
- Text with tightly-spaced characters or line pitch
- Text that is in tables or underlined
- Cursive or italic fonts, and font sizes less than 8 points

Remember that OCR software cannot recognize handwritten characters.

Chapter 2

Understanding EPSON TWAIN Features

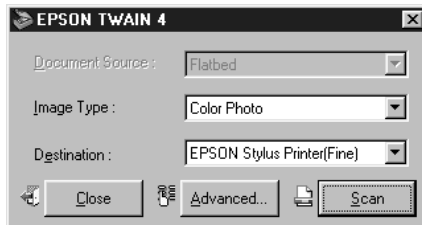
Overview	2-2
Scanning From the Easy Menu	2-3
Scanning From the Advanced Menu	2-4
Previewing Images	2-5
Document Source	2-7
Image Type	2-8
Image Type list	2-8
Image Type button	2-9
Destination	2-13
Destination list	2-13
Destination button	2-14
Unsharp Mask	2-15
Source and Target image sizes	2-16
Image Controls	2-18
Tone Correction	2-20
Color Adjustment	2-23
Auto Exposure	2-24
Reset Button	2-25
Auto Locate	2-25
Settings	2-27
Configuration	2-29

Overview

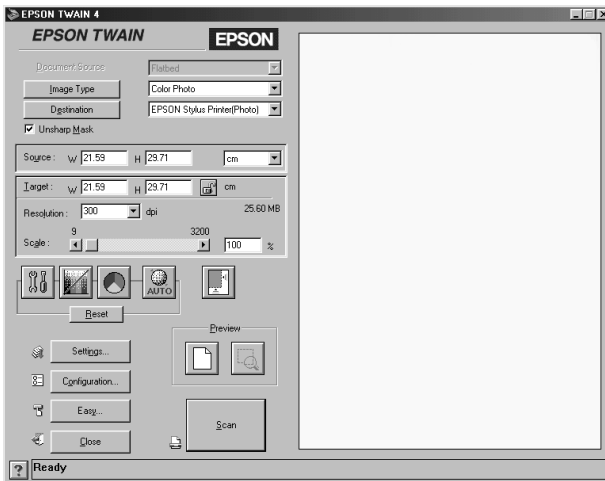
When you start EPSON TWAIN through a TWAIN-compliant application, one of the following windows appears on the screen:

Note for Macintosh users:

Most illustrations shown in this section are for Windows, so they may vary in appearance from what actually appears on your screen. The instructions should be the same, except as noted.



Easy Menu



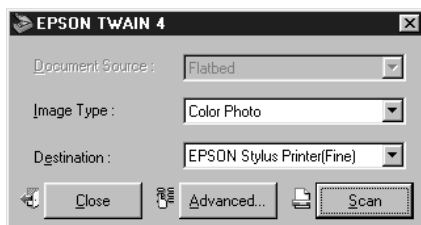
Advanced menu

The following sections describe the features of EPSON TWAIN.

Note:

Some settings may appear dimmed depending on your choice of settings and the features supported by your scanner.

Scanning From the Easy Menu



The Easy menu displays the minimum required settings only, allowing you to scan easily and quickly. Just select the relevant Document Source, Image Type, and Destination settings, then click Scan.

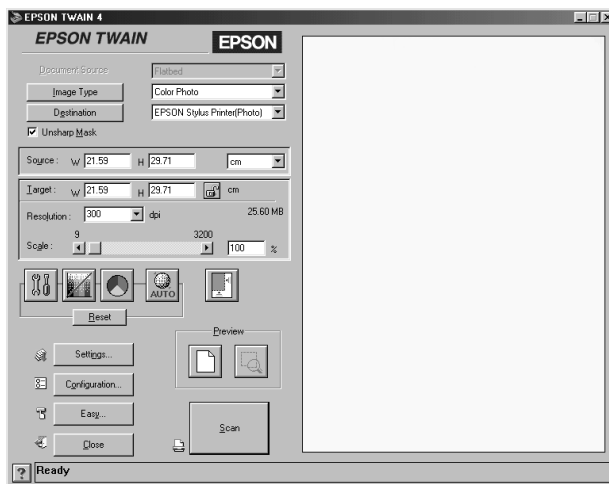
EPSON TWAIN automatically locates the target image on the scanner, adjusts the exposure, and starts scanning. See “Document Source” on page 2-7, “Image Type” on page 2-8, and “Destination” on page 2-13 for details.

Note:

- ❑ *You cannot scan an image that exceeds available memory or disk space. If you attempt to scan an image that is too large, an alert appears on the screen.*
- ❑ *Before you begin scanning, you should calibrate your screen. For details, see Chapter 4, “Calibrating Your System.”*
- ❑ *After an image is scanned, be sure to save or export it.*

If you want to make more settings, click Advanced to open the Advanced menu.

Scanning From the Advanced Menu



Advanced menu

The Advanced menu allows you to make detailed settings. You can set parameters for a setting or select special functions provided with EPSON TWAIN to attain the highest quality scanned images.

Note:

- ❑ *Online help also provides you with information on settings. Click the ? button to access online help.*
- ❑ *You cannot scan an image that exceeds available memory or disk space. If you attempt to scan an image that is too large, an alert appears on the screen.*
- ❑ *Before you begin scanning, you should calibrate your screen. For details, see Chapter 4, "Calibrating Your System."*
- ❑ *After an image is scanned, be sure to save or export it.*

Previewing Images

Before you scan and save an image, you can preview it in the Preview window located on the right side of the Advanced menu. Use the preview feature to check the results of your settings.

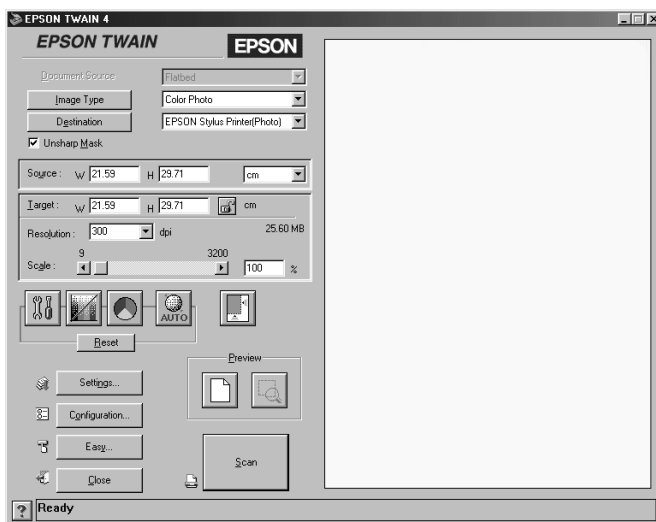


preview button



zoom preview button

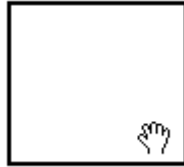
- To preview the entire image, click the preview button.
- To preview a part of the image that is already in the Preview window, click and drag the mouse over the area you want to see in detail, and click the zoom preview button.



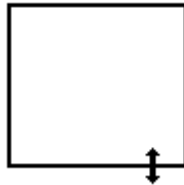
preview window

Note:

- ❑ You cannot preview an image that exceeds available memory or disk space. If you attempt to preview an image that is too large, an alert appears on the screen.
- ❑ When the mouse pointer is placed within the marquee (the frame of the selected image area), it changes to a hand. You can click and drag the marquee anywhere in the Preview window.



- ❑ When the mouse pointer is placed on the edge of the marquee, it changes to an arrow allowing you to re-size the marquee.



- ❑ To remove or delete a marquee, double-click the preview window.

Modifying the preview image

You can see the effects of the following settings in the preview image.

- ❑ Unsharp Mask in the EPSON TWAIN window
- ❑ Pixel Depth, Halftone, and Dropout in the Image Type dialog box

- Exposure, Gamma, Highlight, Shadow, and Threshold in the Image Controls dialog box
- Tone Correction in the Tone Correction dialog box
- Gray Balance Intensity, and Saturation in the Color Adjustment dialog box
- Auto Exposure

Note:

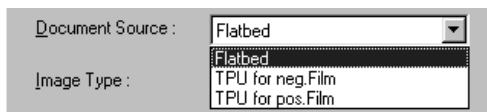
Although the image in the Preview window changes as you make settings, the settings do not affect the actual image until you scan, or re-scan, the image.

Document Source

When using the document table on the scanner, leave the Document Source set to Flatbed. Other selections are available depending on what is installed. These are the optional Automatic Document Feeder, and TPU for Neg. Film or TPU for Pos. Film (for the Film Adapter, optional with the Perfection 1200S and the 1200U, and included with the Perfection 1200PHOTO).

Note:

Uninstalled options are not displayed.



Flatbed:

Choose this setting to use the document table of the scanner.

Automatic Document Feeder:

Choose this setting to use the optional Automatic Document Feeder.

TPU for Neg. Film, TPU for Pos. Film:

Select one of these settings when using the Film Adapter. If you are scanning negative film, select TPU for Neg. Film, and if you are scanning positive film (or slides), select the TPU for Pos. Film setting.

Image Type

Use the Image Type list or button to select the type of image to be scanned.

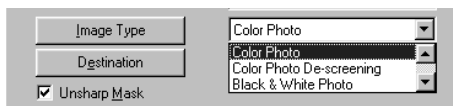


Image Type list

The Image Type list provides the following predefined settings. EPSON recommends you use the predefined settings first, then later improve the quality of the scanned image manually by making the detailed settings described in the next pages, if necessary. Click the arrows on the right to view all of the available settings.

Color Photo:

24-bit Color, best quality

Color Photo De-screening:

24-bit Color, best quality with De-screening to remove moiré patterns

Note:

A moiré is a cross-hatch pattern that appears on scanned images when scanning printed material. It is a result of interference that occurs due to the difference between the pitches of the scanning and the halftone screens.

Black & White Photo:

8-bit Gray, best quality

Line Art:

Black and white, draft quality

OCR:

Black and white, best quality, Text Enhancement Technology

Copy & Fax:

Black and white, hard halftone, draft quality, Auto Area Segmentation

Image Type button

The Image Type button allows you to customize the Image Type settings. If you want to make many detailed settings manually, use this feature.

Click the Image Type button. The following dialog box appears.

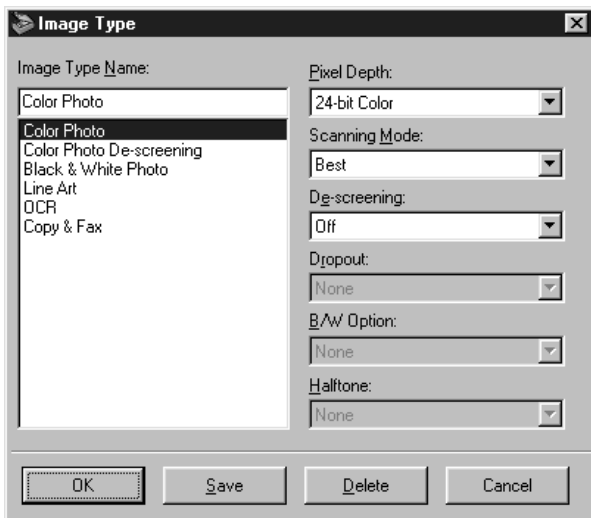


Image Type Name:

The names of predefined settings and any custom settings you have saved appear in the Image Type Name list.

Pixel Depth:

Select scanning colors from:
24-bit Color, 8-bit Gray, and Black & White.

Halftone:

Select a halftone or dither setting to reproduce images using special dot patterns:
Mode A (Hard Tone), Mode B (Soft Tone), Mode C (Net Screen), Dither A (4 × 4 Bayer), Dither B (4 × 4 Spiral), Dither C (4 × 4 Net Screen), Dither D (8 × 4 Net Screen), or None.

Note:

Halftone is available only when Pixel Depth is set to Black & White.

Scanning Mode:

Select either Best or Draft scanning quality. Select Best when quality is more important than speed.

De-screening:

Select either On or Off. When On is selected, moiré patterns are automatically removed from scanning images, but scanning takes longer.

Note:

A moiré is a cross-hatch pattern that appears on scanned images when scanning printed material. It is a result of interference that occurs due to the difference between the pitches of the scanning and the halftone screens.

Dropout:

Select a color to subtract from a black and white scan of a colored original. Proper use of dropout can improve the quality of your black and white scans. Available dropout options are:
None, Red, Green, and Blue.

Note:

- Dropout is available only when Pixel Depth is set to 8-bit Gray or Black & White.*

- Depending on the image you scan, you may need to adjust the Threshold setting in the Image Controls dialog box to enable this feature.*

B/W Options:

Select from:

Text Enhancement Technology, Auto Area Segmentation, or None.

Text Enhancement Technology

To improve recognition accuracy during OCR (Optical Character Recognition) scanning, select this option. This function eliminates the document background from scans.

Auto Area Segmentation

To make grayscale images clearer and text recognition more accurate, select this option. This function separates text from graphics.

Note:

- The B/W Option setting is available only when Black & White is selected as the Pixel Depth setting.*
- When you need neither TET nor AAS, select None.*
- Default is set to None.*

To apply the settings you made, click OK. The Preview window displays the effects of the current settings except for TET (Text Enhance Technology) and AAS (Auto Area Segmentation) settings.

To cancel the settings, click Cancel.

To save the settings you made as a group of custom settings, type a new name in the Image Type Name box, then click Save.

To delete an Image Type setting, select the setting name to be deleted in the Image Type Name menu, then click Delete.

Destination

Select the destination, or output device, where the scanned image is to be printed or displayed using the Destination list or button.



Destination list

The Destination list contains the following predefined settings and any custom settings you have saved in the Destination dialog box. Click the arrows on the right to view all the available settings.

Destination name	Resolution	
	Line drawings and halftone images	Photos
Screen/Web	96 dpi (for Windows) 72 dpi (for Macintosh)	96 dpi (for Windows) 72 dpi (for Macintosh)
Fax	200 dpi	200 dpi
OCR	300 dpi	300 dpi
EPSON Stylus Printer (Fine)	360 dpi	150 dpi
EPSON Stylus Printer (Photo)	720 dpi	300 dpi
Laser Printer	600 dpi	200 dpi

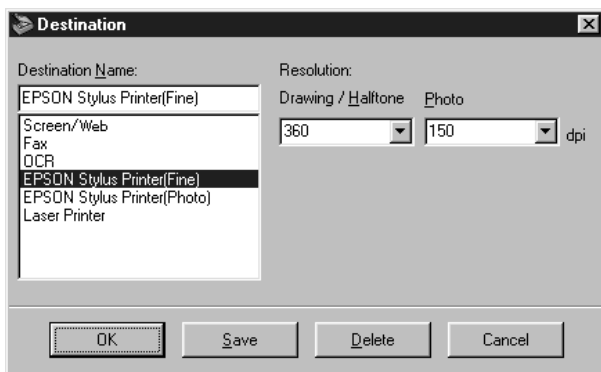
If you are using an EPSON Stylus printer and are printing scanned images with the Economy, Normal, or Fine Print Quality settings in your printer software, selecting EPSON Stylus Printer (Fine) is recommended. If you are printing with the SuperFine or Photo Print Quality settings, select EPSON Stylus Printer (Photo).

Note:

The effects of the Destination settings cannot be viewed in the Preview window.

Destination button

The Destination button allows you to customize the Destination settings. To make your own settings, such as scanning resolution, click this button. The following dialog box appears.



Destination Name:

Predefined and custom setting names appear in the Destination menu.

Resolution:

Select a scanning resolution for line drawing and halftone images, or photos.

Note:

- ❑ When the Pixel Depth setting in the Image Type dialog box is set to Black & White, the Drawing/Halftone setting takes effect and the Photo setting becomes irrelevant. For other Pixel Depth settings, the Photo setting takes effect and the Drawing/Halftone setting becomes irrelevant.

- ❑ *To print your scanned document when Resolution is set to Drawing/Halftone, select the same resolution setting from the list as you select in the printer driver. To print your scanned document when Resolution is set to Photo, select a resolution between 150 and 300 dpi. If you select a higher resolution, the Photo setting requires longer to print, but does not improve the output quality.*
- ❑ *The Resolution setting is closely related to the Image Size and Scale settings. If you change them arbitrarily, the resulting image may not be what you expected.*
- ❑ *The range of resolution values depends on your scanner.*

To apply the settings you made, click OK. To cancel the settings, click Cancel.

To save the settings you made, type a new name in the Destination Name box, and then click Save.

To delete a Destination setting, select the target setting name to be deleted in the Destination Name menu, then click Delete.

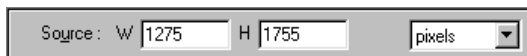
Unsharp Mask

You can select or deselect the Unsharp Mask setting. Selecting this check box improves image sharpness.

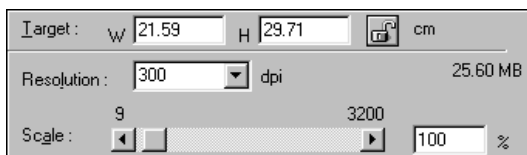


Source and Target image sizes

The Source fields indicate the size of the image that is displayed or selected in the Preview window.



The Target fields indicate what size the image will be when it is output.



Note:

- The image size values are determined automatically when you scan from the Easy menu.*

- The image size setting is closely related to the Resolution. If you change either setting arbitrarily, the resulting image may not be what you expect.*

Width and Height menu:

The width and height of an image are indicated in the selected unit of measure. You can type new values directly in the indicator fields, or you can change the image area in the Preview window by creating a marquee, or frame. Do this by dragging the mouse over the desired area. See “Previewing Images” on page 2-5 for more information on marquees.

Units menu:

Select a unit of measurement. You can select either pixels, inches, or cm.

Storage size indicator:

The storage size of an image is indicated in KB or MB. As you change the image area in the Preview window, this value also changes.

Lock button:

The current size of width-to-height of the target image can be locked, allowing the ratio of width-to-height of the Source image to change according to the scale value, or the scale value to change according to the ratio of width-to-height of the Source image. This is especially useful in cases where the size of an image does not fit the size of the paper on which you want to print the image, but you want to keep the image's original proportions. Enter the size of the paper in the Width and Height fields of the Target box and then click the lock button. The scale value is automatically changed, maintaining the current ratio of width-to-height to fit the paper.

Resolution:

The resolution for the current scanning operation can be changed by selecting a resolution or typing in the value. This setting overrides the resolution setting you make in the Destination dialog box.

Scale slider:

An image can be reduced or enlarged by moving the Scale slider. You can also click the left or right arrow to change the image size in 1% increments.

The range of possible reduction or enlargement varies depending on the current resolution setting.

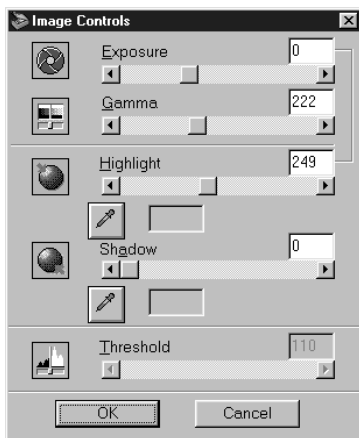
Scale indicator:

The percentage of enlargement or reduction is shown in the Scale indicator field. You can type a new value directly into this field, or use the Scale slider to determine the value.

Image Controls



Click the Image Controls button on the Advanced menu to view the following dialog box.



Note:

- ❑ *The Image Controls button appears dimmed and is not available when TET (Text Enhancement Technology) is selected in the Image Type dialog box.*

- ❑ *The Image Controls settings are optimized automatically when you scan from the Easy menu.*

- ❑ *If Pixel Depth is set to Black & White and Halftone is set to None in the Image Type dialog box, all the settings except Threshold appear dimmed and cannot be selected.*
- ❑ *You can see the effects of the Image Controls settings in the Preview window.*

Exposure:

The Exposure setting lightens or darkens an image. You can select from -10 (darkest) to 20 (brightest) by moving (clicking and dragging) the slider.

The Exposure and Highlight controls are related. When the Exposure setting is changed, the Highlight value is automatically set.

Gamma:

The Gamma control allows you to adjust the mid-tones in an image. You can select from 50 (darkest) to 500 (brightest) by moving the slider.

Highlight:

The Highlight control allows you to adjust the brightness level of the brightest parts of an image. You can select from 61 to 490 by moving the slider.

Click the eyedropper button beneath the slider, and the mouse pointer changes to an eyedropper. Move the eyedropper over the preview image, and click a bright area. The eyedropper “picks up” the color from that area, and uses it as the highlight for the entire image. This effect shows up immediately in the preview image. Click Cancel to restore the original image.

Shadow:

The Shadow control allows you to adjust the darkness level of the darkest parts of an image. You can select from 0 to 60 by moving the slider.

Click the eyedropper button beneath the slider, and the mouse pointer changes to an eyedropper. Move the eyedropper over the preview image, and click a dark area. The eyedropper “picks up” the color from that area, and uses it as the shadow for the entire image. This effect shows up immediately in the preview image. Click **CANCEL** to restore the original image.

Threshold:

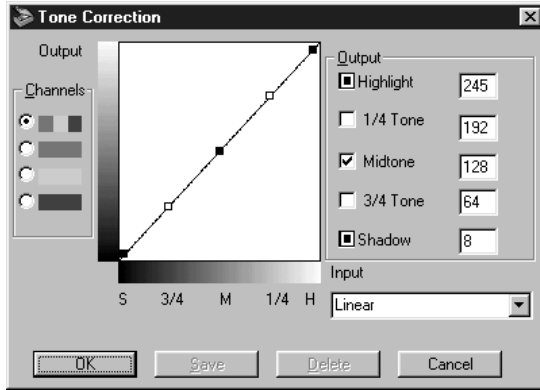
Available only when Pixel Depth is set to Black & White and Halftone is set to None in the Image Type dialog box. The scanner scans gray shades as either black or white using this setting.

You can select from 0 (lightest) to 255 (darkest) by moving the slider.

Tone Correction



Click the Tone Correction button on the Advanced menu to view the following dialog box.



Note:

- The Linear Tone Correction settings are used when you scan from the Easy menu.
- The Tone Correction button appears dimmed and is not available when Pixel Depth is set to Black & White, Halftone is set to None, and TET (Text Enhancement Technology) is selected in the Image Type dialog box.
- You can see the effects of the Tone Correction settings in the Preview window.

The tone value represents the contrast in the tonal relationship between an original image and its reproduction on a monitor or printer.

Tone Curve editor:

The editor allows you to customize tone correction. Drag points on the tone curve to adjust the tone value. You can edit up to five tonal elements.

Output options:

If you select the check box for a specific point, such as 1/4 Tone or Midtone, you can move that point and it will remain where you leave it; it will not be affected by the movement of other points on the curve. If the check box is cleared, the point will be affected by the movement of other points.

Channels options:

You can select the combined red, green, and blue (RGB) channel to modify all colors, or select these colors separately.

Note:

If Pixel Depth is set to Black & White or 8-bit Gray in the Image Type dialog box, you can only select the combined RGB channel option.

Tone correction list:

Select a tone correction setting from this list. The custom settings you have saved appear in this list.

OK/Save/Delete/Cancel buttons:

To accept the defining Tone Correction or close the dialog box, click OK.

After you correct tone, type a name for your custom settings in the tone correction list and click Save.

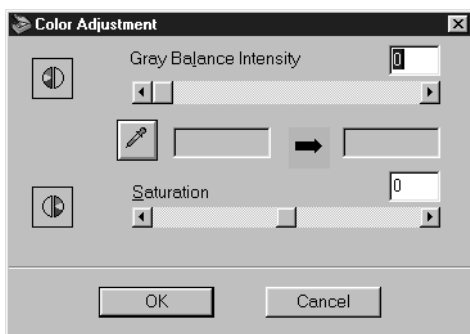
To delete a setting, select the name of the setting you want to delete in the tone correction list and click Delete.

To cancel the operation, click Cancel.

Color Adjustment



Click the Color Adjustment button on the Advanced menu to view the following dialog box.



Note:

- ❑ *If Image Type setting is something other than Color Photo or Color Photo De-screening, or Pixel Depth is set to 8-bit Gray or Black & White, the Color Adjustment button appears dimmed and these settings cannot be selected.*
- ❑ *You can see the effects of the Color Adjustment settings in the Preview window.*

Gray Balance Intensity:

Gray Balance Intensity removes unwanted color casts and tints by balancing color saturation.

Click the eyedropper button beneath the slider. The mouse pointer changes to an eyedropper. Then click the color you want to be gray. The eyedropper “picks up” the color and displays it in the box beside the eyedropper button. You can then correct the cast level for that color from 0 to 100 by moving the slider. The corrected color appears in the box on the right, and the effect shows up immediately in the preview image. Click Cancel to restore the original image.

Saturation:

Saturation is the property that defines color depth. Select the saturation level for color from -100 (less color) to 100 (more color) by moving the slider.

Auto Exposure



Click the Auto Exposure button on the Advanced menu to automatically optimize the exposure for an image. The Gamma, Highlight and Shadow settings in the Image Controls dialog box are automatically set.

Note:

- ❑ *The Auto Exposure button appears dimmed and is not available when the Pixel Depth is set to Black & White and AAS is not selected in the Image Type dialog box.*

- ❑ *The Auto Exposure feature is automatically activated when scanning from the Easy menu.*

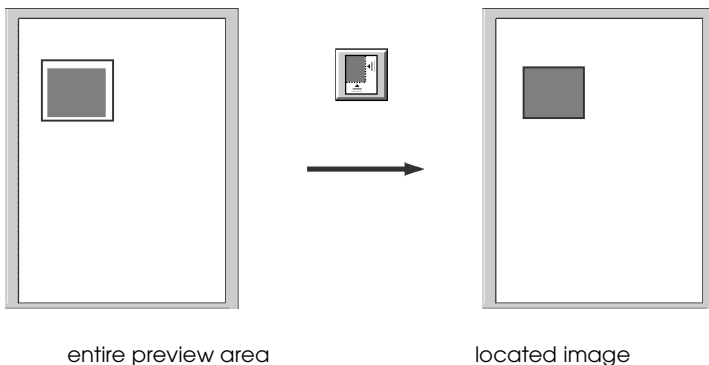
Reset Button

Use the Reset Button to return any image control settings you made back to their default settings. If you did not alter any image control settings, this button appears dimmed and is not available.

Auto Locate



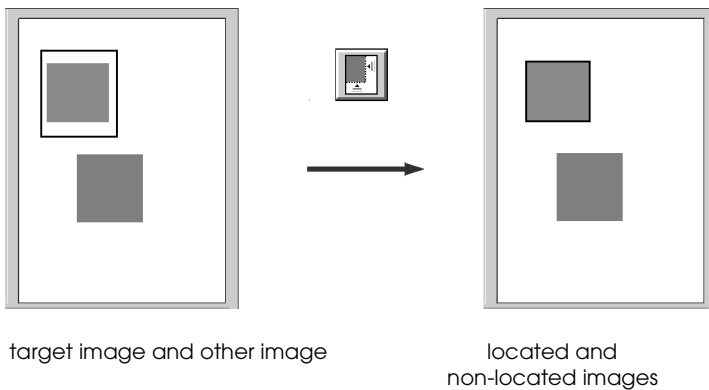
Click the Auto Locate button on the Advanced menu to cause the scanner to automatically locate and select the target image. The image appears without white borders in the Preview window.



Note:

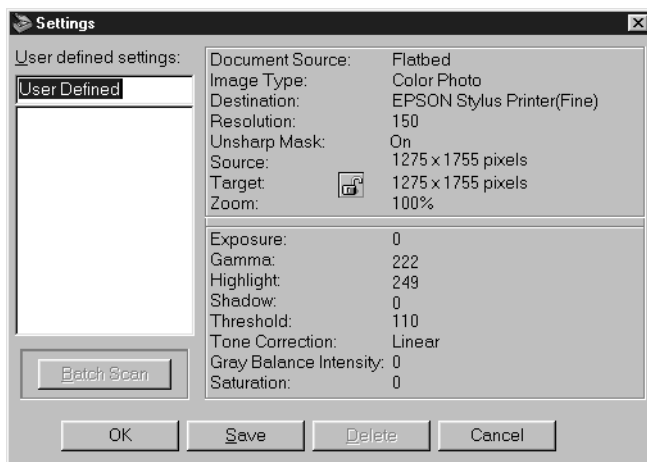
The Auto Locate feature is automatically activated when scanning from the Easy menu.

If a document contains more than one image, select a target image by placing the mouse pointer over the image and clicking the Auto Locate button. The selected target image is located automatically.



Settings

Click the Settings button on the Advanced menu to view the following dialog box. You can view all the settings for the current preview image in this dialog box. Also, you can apply any custom settings you have saved.



To save the currently selected settings, type a new name in the User defined settings field, then click Save.

To apply saved settings, select a setting name from the list, then click OK. The preview image will reflect the settings you saved.

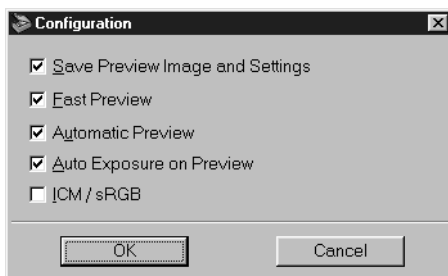
To restore the previous settings, click Cancel.

To delete a setting, select the setting name in the list, then click Delete.

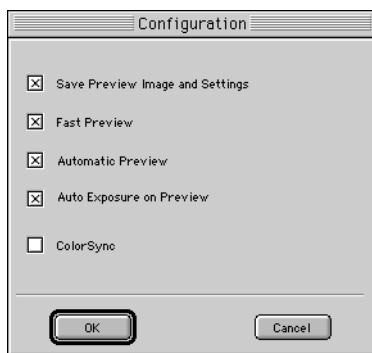
To scan a single image with several different settings, make and save each group of settings as described above. Then hold down the Shift key while clicking the custom settings you want to select in the User defined settings list. After selecting all the settings you want to use when scanning, click Batch Scan. The scanner scans the image once for each group of settings you have selected.

Configuration

Click the Configuration button on the Advanced menu to view the following dialog box. You can make settings that affect the Preview window.



Windows



Macintosh

Save Preview Image and Settings:

Select this check box to automatically save the preview image and all the image settings when you exit EPSON TWAIN (quit scanning). The next time you restart EPSON TWAIN, the image and settings will reappear.

Fast Preview:

Enables high-speed loading of the preview image. If this is selected, the preview image is scanned in Draft mode. If this is not selected, the preview image is scanned in Best mode, and you can get accurate values for the Highlight, Shadow, and Gray Balance Intensity by sampling with the eyedropper in the preview image.

Do not use this feature (do not select the check box) when quality is more important than speed.

Automatic Preview:

Previewing automatically starts when EPSON TWAIN is launched.

Auto Exposure on Preview:

Displays the preview image with automatically optimized exposure settings. The result is the same as if you clicked the Auto Exposure button.

ICM, ICM/sRGB (for Windows)

Depending on the version of Windows installed in your computer, this setting may be unavailable or have a different caption.

Select this check box to reproduce the colors in your image using the Windows ICM color management system. This setting appears only with Windows.

Note:

- If your printer and monitor do not support ICM, be sure this check box is cleared.*

- See “Using ICM/sRGB, ICM (For Windows 98/95 Users)” on page 4-6 for more details.*

ColorSync (for Macintosh)

Select this check box to reproduce the colors in your image using the ColorSync color management system. This setting appears only with Macintosh.

Note:

If your printer and monitor do not support ColorSync, leave this check box clear.

Chapter 3

Using EPSON Instant Photo Print

Features	3-2
Opening EPSON Instant Photo Print	3-3
Before Scanning and Printing	3-5
Placing film and photos	3-5
Loading paper in your EPSON printer	3-8
Scanning and Printing	3-8
Scanning and Printing Using Start Button	3-10

Features

EPSON Instant Photo Print is software that simplifies scanning and printing photos. This software enables you to scan film and photos with your scanner and print them out on your EPSON color inkjet printer with only a few simple mouse clicks. To scan film, you need to have a Film Adapter or Transparency Unit for your scanner. This software supports the Start Button feature on Windows 98.

The following sections describe how to use the features of EPSON Instant Photo Print.

System Requirements

To use EPSON Instant Photo Print, you need the following hardware and software:

- A PC running Windows 98, 95, or NT 4.0, an Apple Power Macintosh running System 7.5 or later or an iMac
- At least 8MB of available RAM
- A hard drive at least 20MB of free space
- EPSON Perfection 1200U/1200S/1200PHOTO scanners

- ❑ An EPSON Stylus PHOTO series or EPSON Stylus COLOR series printer except models listed below, or an IP-100:
 - EPSON Stylus COLOR
 - EPSON Stylus COLOR II
 - EPSON Stylus COLOR IIs
 - EPSON Stylus COLOR 200
 - EPSON Stylus COLOR 300
 - EPSON Stylus COLOR 400
 - EPSON Stylus COLOR 500
 - EPSON Stylus COLOR 600
 - EPSON Stylus COLOR 800
 - EPSON Stylus COLOR 850
 - EPSON Stylus COLOR 1500
 - EPSON Stylus COLOR 1520
 - EPSON Stylus COLOR 3000

Note:

- ❑ *EPSON Instant Photo Print is not supported with the EPSON Stylus Photo in a Windows NT 4.0 environment.*
- ❑ *To use EPSON Instant Photo Print with an EPSON Stylus Photo in a Macintosh environment, you must have a version 5.0 or later printer driver installed.*

Opening EPSON Instant Photo Print

Before you open EPSON Instant Photo Print, make sure your EPSON scanner and printer are turned on and ready to scan and print. Also make sure the Film Adapter or Transparency Unit is turned on if you are scanning film or slides.

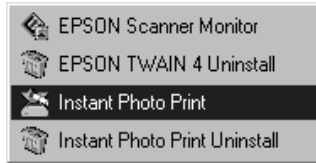
Note:

- ❑ *If you start EPSON Instant Photo Print before turning on your scanner or printer, you may not be able to scan or print properly.*
- ❑ *Make sure that only the EPSON scanner you want to use with EPSON Instant Photo Print is connected and turned on.*

- ❑ *Make sure that the EPSON printer you want use with this software is set as the system default printer for Windows or selected in the Chooser for Macintosh.*

For Windows users

To start EPSON Instant Photo Print, click Start, Program, EPSON Scanner, then choose Instant Photo Print.



For Macintosh users

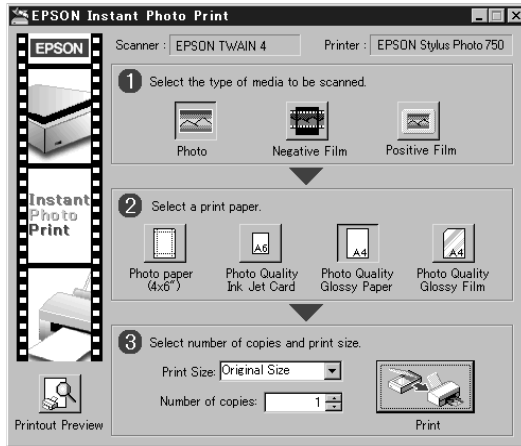
Open the Instant Photo Print folder, then double-click the Instant Photo Print icon.



Note for Macintosh users:

Most illustrations shown in this section are for Windows, so they may vary in appearance from what actually appears on your screen. The instructions should be the same, except as noted.

The EPSON Instant Photo Print window appears.



Before Scanning and Printing

Placing film and photos

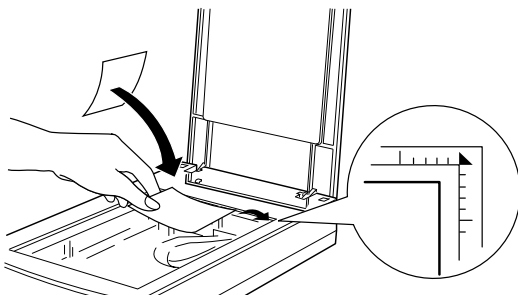
Place the film or photo you want to scan and print on the scanner's document table. You can scan photos and documents up to A4 size. With transparent originals, you can only scan 35mm strip negative films, or mounted positive films (slides). For instructions on how to place film, see below and check your scanner manual for details.

Photo (reflective material)

Place the photo on the document table, with the side to be scanned facing down and aligned with the upper right -hand corner.

Note:

- ❑ *If you have installed either the Film Adapter or the Automatic Document Feeder option on your scanner, remove it and replace the document cover to scan and print using EPSON Instant Photo Print. Otherwise the full document table area may be scanned.*
- ❑ *An area approximately 3mm in from both horizontal and vertical edges of the document table glass cannot be scanned.*



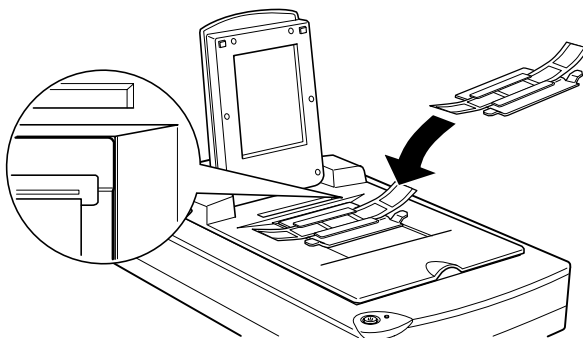
35 mm strip film

Set the film in the film holder designed for use with EPSON Instant Photo Print facing down, and place the film holder on the document table in the window of the Film Adapter.

Note:

- ❑ *Set the strip film in the film holder so that all of the frame that you want to scan is positioned inside the film holder opening.*
- ❑ *The front side of film is the side on which the film maker's name and film ID numbers are readable.*

- ❑ *Place the film holder on the document table, aligned with the upper right hand corner of the film adapter.*

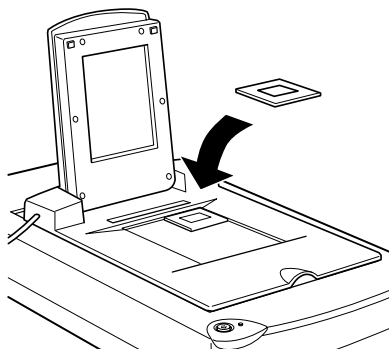


35 mm slides

Place the 35 mm slide holder on the document table, facing down in the window of the Film Adapter.

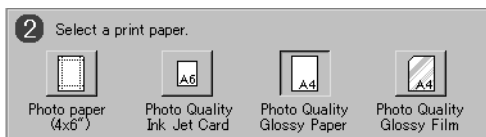
Note:

- ❑ *The front side of film is the side on which the film maker's name and film ID numbers are readable.*
- ❑ *Place the slide on the document table aligned with the upper right hand corner of the film adapter.*



Loading paper in your EPSON printer

Load paper in your printer. You can use the media types and sizes shown in the EPSON Instant Photo Print window.



Note:

The types and sizes of paper that can be used with EPSON Instant Photo Print may vary depending on the country or the version of the software.

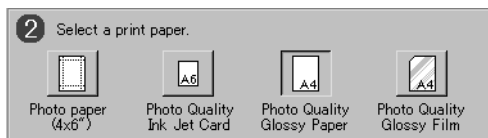
Scanning and Printing

Follow the steps below to start scanning and printing.

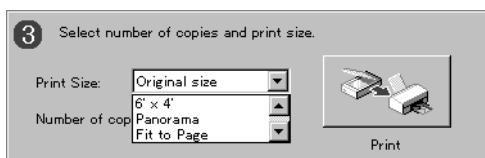
1. Select the type of media you have placed on the scanner from menu No. 1.



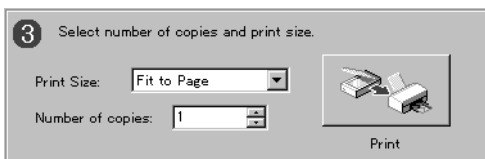
2. Select the type of paper you have loaded in the printer from menu No. 2.



3. Select the print out size and layout you want from the Print Size list in menu No. 3.



4. Specify number of copies you want to print in the Number of Copies box.



5. If you want to view a print preview image, click Printout Preview.



6. Click Print to start scanning and printing.



To close EPSON Instant Photo Print, click the Close button or click the appropriate button on the right side of the title bar.

Scanning and Printing Using Start Button

If you are using Windows 98, you can scan and print by pressing the Start button on your scanner. It is useful if you are scanning the same type of material and printing in the same format repeatedly. Follow the steps below:

1. Select your scanner from the installed scanners and cameras list in the Scanners and Cameras Properties dialog box. Click Properties, and then click the Event tab.
2. Make sure the EPSON Instant Photo Print is selected in the Send To this application list.
3. Start EPSON Instant Photo Print and make any necessary settings for scanning and printing.
4. Press the Start button on your scanner. The scanner scans the image and then the printer prints it out in accordance with the settings made in the step 3 above.

Note:

If EPSON Instant Photo Print is not open when the Start Button on the scanner is pressed, EPSON Instant Photo Print is opened automatically and scanning and printing is performed using the settings made last time. To make changes to the settings, cancel the operation while scanning is in progress.

Chapter 4

Calibrating Your System

Overview	4-2
Calibrating Your Screen	4-2
For Windows 98 users	4-2
For Windows 95 and NT 4.0 users:	4-4
For Macintosh users	4-6
Using ICM/sRGB, ICM (For Windows 98/95 Users).....	4-6
For Windows 98 users	4-7
For Windows 95 users	4-7
Using ColorSync (For Macintosh Users)	4-8

Overview

When you install EPSON TWAIN, the EPSON Screen Calibration utility is automatically installed.

EPSON Screen Calibration calibrates your monitor to ensure the tone and contrast on your screen match the original image. Be sure to calibrate your screen before using your scanner.

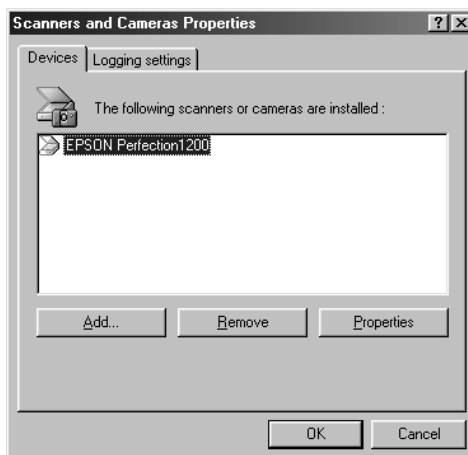
For more information regarding color and output device calibration, see the *Color Guide*.

Calibrating Your Screen

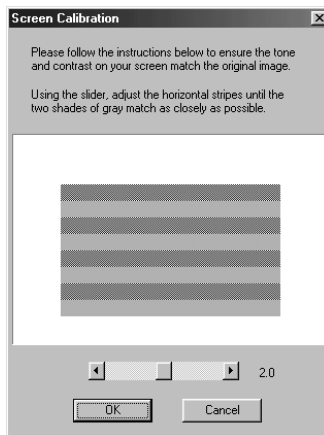
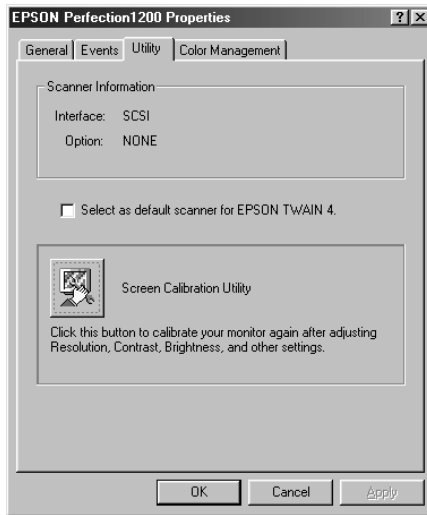
You need to calibrate your screen when you first install the scanner software, and anytime you switch to a different monitor.

For Windows 98 users

1. Double click the Scanners and Cameras icon in the Control Panel. The Scanners and Cameras Properties dialog box appears. Click the Properties button.



2. Click the Utility tab, then click the Screen Calibration Utility icon. The Screen Calibration dialog box appears.



3. Click OK to finish calibrating your scanner and monitor.

The gray stripes will not blend together perfectly; however, try to make the different tones match as closely as possible.

The setting is automatically saved as the Screen profile in the Calibration list in EPSON TWAIN's Destination dialog box. The screen profile contains calibration information for the preview image as well as the scanned image.

For Windows 95 and NT 4.0 users:

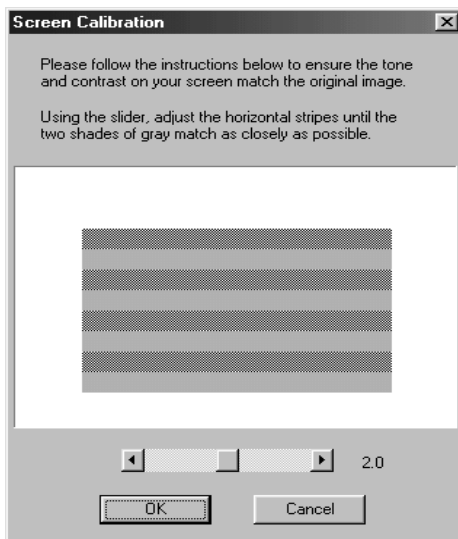
1. Double-click the EPSON TWAIN icon in the Control Panel window.

The EPSON TWAIN 4 Setup dialog box appears.



2. Click Screen Calibration Utility in the dialog box.

The following screen appears:



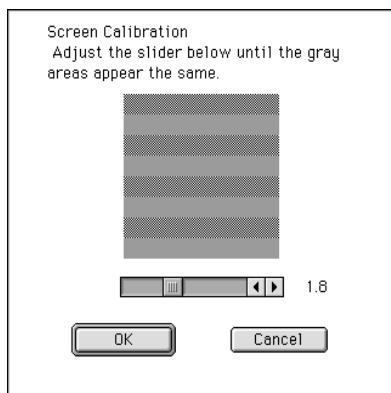
3. Look at the screen from a distance and move the slider to the right or left until the two tones almost match.
4. Click OK to finish calibrating your scanner and monitor.

Note:

The gray stripes will not blend together perfectly; however, you should try to match the different tones match as closely as possible.

For Macintosh users

1. Click the EPSON Screen Calibration icon in the EPSON Scanner folder to view the Screen Calibration dialog box.



2. Look at the screen from a distance and move the slider right or left until the two tones almost match.
3. Click OK to finish calibrating your scanner and monitor.

Note:

The gray stripes will not blend together perfectly; however, you should try to make the different tones match as closely as possible.

Using ICM/sRGB, ICM (For Windows 98/95 Users)

If you use Windows 98 or 95 and your output devices (printer and monitor) support the ICM color management system, you can use the ICM calibration method.

For Windows 98 users

Note:

If your output devices do not support sRGB, leave the check box empty.

Follow the steps below:

1. Run PageManager for EPSON and select Acquire from the File menu to start EPSON TWAIN.
2. Click Configuration. Select ICM/sRGB in the Configuration dialog box.
3. Make any other settings you want.
4. Click Scan. The scanner scans an image using the sRGB profile.

For Windows 95 users

Note:

If your output devices do not support ICM, leave the check box empty.

Follow the steps below:

1. Run PageManager for EPSON and select Acquire from the File menu to start EPSON TWAIN.
2. Click Configuration. Select ICM in the Configuration dialog box.
3. Make any other settings you want.
4. Click Scan. The scanner scans an image using the ICM profile.

Using ColorSync (For Macintosh Users)

If your output devices (printer and monitor) support the Apple ColorSync color management system, you can use the ColorSync calibration method.

Note:

If your output devices do not support ColorSync, leave the check box empty.

Follow the basic steps below:

1. Run TWAIN-compliant software and select **Acquire** or a similar command to start EPSON TWAIN.
2. Click **Configuration**. Select the ColorSync check box in the Configuration dialog box.
3. Make any other settings you want.
4. Click **Scan**. The scanner scans an image using the ColorSync profile.

When the scanned image is printed or displayed with an output device calibrated for the scanner, the image reproduced is identical to the original.

Chapter 5

Troubleshooting

Problems and Solutions	5-2
Scanning Problems.....	5-2
Image is dark, with little or no detail.....	5-2
You cannot scan an image or you only get a few dots for the scanned image.....	5-3
Moiré (cross-hatch) patterns appear in the scanned image	5-3
Scanned image is too large.....	5-3
Colors differ from the original.....	5-4
Poor character recognition during OCR scanning.....	5-4
Software Operation Problems	5-5
You cannot start EPSON TWAIN.....	5-5
You can't select optional equipment (Auto Document Feeder or Film Adapter).....	5-5
Pressing the Start button does not start Scanning.....	5-5

Problems and Solutions

Most problems you encounter while operating your scanner and software have simple solutions. This section divides the problems into two categories:

- Scanning problems 5-2
- Software operation problems 5-5

Read the appropriate section to find your problem; then follow the recommended steps.

Note:

If some settings appear dimmed in EPSON TWAIN, they cannot be selected because of the capability of your scanner or your choice of other settings.

If you cannot solve a problem after reading and following the information in this chapter, contact your dealer or a qualified customer support person for assistance.

Scanning Problems

Image is dark, with little or no detail.

- Calibrate the screen as described in “Calibrating Your Screen” on page 4-2.
- Change the Destination setting. Select SCREEN as the “Destination” on page 2-13. Selecting a printer may cause on-screen colors to be different from the colors of the original, however colors will be reproduced correctly when it is printed.

You cannot scan an image or you only get a few dots for the scanned image

- ❑ Make sure you have placed a document on the document table of the scanner.
- ❑ Change the Threshold setting. When OCR is selected as the Image Type, change Text Enhancement Technology to None from the B/W Option in the Image Type dialog box. Then change the Threshold setting in the Image Controls dialog box.
Or change OCR to Line Art, then change the Threshold setting in the Image Control dialog box. See “Image Controls” on page 2-18

Moiré (cross-hatch) patterns appear in the scanned image

- ❑ Change the Image Type settings. Turn the De-screening setting On in the Image Type dialog box.
- ❑ Place a transparency sheet between the document and document table to make the document slightly out of focus.
- ❑ Reposition the document slightly.
- ❑ Make the Image Size setting slightly smaller.

Scanned image is too large.

- ❑ Change the Destination setting. Select Screen as the “Destination” on page 2-13. If you select a printer as the Destination setting, the print size will be correct, although the image may appear enlarged on the screen of some applications.

Colors differ from the original.

- ❑ Calibrate the screen. See “Calibrating Your Screen” on page 4-2.
- ❑ Change the Image Type and Destination settings. See “Image Type” on page 2-8 and “Destination” on page 2-13 to make sure your settings are correct.
- ❑ Printed colors will not exactly match the colors on your monitor, since printers and monitors use different color systems: monitors use RGB (red, green, and blue), while printers typically use CMYK (cyan, magenta, yellow, and black).

Poor character recognition during OCR scanning.

- ❑ Change the Image Type setting. Select OCR as “Image Type” on page 2-8.
- ❑ Try adjusting the Threshold setting in the Image Controls dialog box.
- ❑ Select Text Enhancement Technology from B/W Option in the Image Type dialog box to eliminate background noise.
- ❑ See “Optimizing Image Scanning” on page 1-4 for more information.

Software Operation Problems

You cannot start EPSON TWAIN.

- Make sure the scanner is turned on.
- Make sure the interface cable meets the requirements of your interface board. See the manual that comes with the interface board.
- Turn off the scanner and computer and check the connection between the scanner and the computer.
- Make sure the interface board is installed correctly.
- Make sure that EPSON TWAIN is selected properly in your application software.

You can't select optional equipment (Auto Document Feeder or Film Adapter).

- Make sure the optional equipment is installed correctly. See your scanner manual.

Pressing the Start button does not start Scanning.

- For Windows 95, 98, NT 4.0, and Macintosh**
Make sure the Scanner Monitor software is running and check the Scanner Monitor's Launch Application path is set correctly.
- For Windows 98**
Click the Events tab in your scanner's Properties dialog box and make sure the Disable device events check box is clear. And make sure the Start button is selected as the Scanner events, and at least one scanner event recognizable application in the Send to this application box is selected.

Glossary

additive primary colors

The colors of red, green and blue (RGB) - which give the perception of white when combined equally. These are the colors of the color system used by monitors and scanners.

bi-level data

Image data that is composed of 1 bit per pixel. A pixel is represented by a single bit of digital data that can be expressed as only 1 (light) or 0 (dark).

bit

Short for binary digit. The smallest unit of data in computer processing. A bit can represent one of two values: on, represented by a 1, or off, represented by a 0.

bit/pixel

The unit that indicates the number of bits allocated for a pixel. The larger the bit value, the more detail of a pixel will be reproduced.

brightness

A scanner function to lighten or darken the output image data.

byte

A unit of information consisting of eight bits. A byte can represent a control code or character.

carriage

A component of the scanner that contains the optical sensor and light source for scanning.

color correction

A method of adjusting the color image data for a particular type of device so that the reproduction results are as close as possible to the original colors.

color separation

A process of converting full-color images into a limited number of primary colors. Additive primary colors (red, green, and blue) are used by the scanner, and the subtractive primary colors (cyan, magenta, and yellow) plus black are used for printing press separation.

daisy chain

A SCSI bus arrangement that allows several devices to be connected simultaneously in a line to a single computer. See SCSI.

default

A set of values used when no other selections have been made. These are sometimes called factory defaults if the original values have not been changed since the scanner left the factory.

dithering

A process in which software or an output device simulates continuous tones with groups of dots.

document

The item, such as a sheet of paper or a book, that is placed on the document table for the scanner to read.

dpi

Short for dots per inch. A unit of measurement for resolution. The higher the value, the higher the resolution.

dropout color

A color the scanner does not recognize and ignores. You can select and deselect dropout colors in the scanner software.

ESC/I

Abbreviation for EPSON Standard Code for Image scanners. A system of commands that allows you to control image scanners from your software.

ESC/P

Abbreviation for EPSON Standard Code for Printers. A system of commands that allows you to control printers from your software.

gamma

Gamma is a value that expresses the relationship between the input and output of a device. By adjusting the gamma, the brightness of the mid-tones of an image can be changed without affecting the shadows and highlights.

grayscale

Images represented with various shades of gray in addition to black and white.

halftoning

A method of reproducing images with patterns of dots to improve the quality of the output.

home position

The position at the rear (nearest the cover hinge position) of the scanner where the carriage rests before a scanning operation.

imagesetter

A device that uses computer files to produce high-resolution text and graphics output on film or paper. These are usually found in service bureaus and printing companies.

impact dot printer

A printer that transfers ink onto the paper by striking an ink ribbon with a number of small pins.

ink jet printer

A printer that transfers ink onto the paper by spraying the ink through a number of small nozzles.

interface

A piece of hardware, a method, or a standard used for connection between or among computer devices.

line sequence

A type of color scanning that separates primary colors line by line. The carriage makes only one pass.

moiré

A moiré is a cross-hatch pattern that appears on scanned images when scanning printed material. It is a result of interference that occurs due to the difference between the pitches of the scanning and the halftone screens.

monochrome

Black and white images, or images represented only by the intensity of luminosity.

OCR***Optical Character Recognition.***

The technology that allows computers to "read" text from physical objects. OCR requires a graphical representation of text to interpret, which usually comes from a scanned image.

page sequence

The type of color scanning in which the entire image is scanned once for each separate color.

pixel

Short for picture element. Each image is composed of a number of pixels. Pixels are also counted in units of dots.

plain bi-level

Bi-level image data without the halftoning process.

port

An interface channel through which data is transmitted between devices.

primary colors

Basic colors. See *additive primary colors* and *subtractive primary colors*.

resolution

Indication of how finely an image is resolved into pixels. Can be measured in dots per inch (dpi), pixels per inch (ppi), or samples per inch (spi).

scan

An operation performed by the sensor and the carriage. The image is divided into pixels by scanning.

scanning area

The physical size of the image that can be scanned by the scanner.

SCSI

Small Computer System Interface. This is one method used to connect your computer to peripherals such as scanners, hard disk drives, CD-ROM drives, and others.

SCSI ID

The numbers that all devices in a SCSI connection (see daisy chain) use to identify each other. If the same ID number is used by two devices in the same daisy chain, the devices cannot operate properly.

subtractive primary colors

The colors of cyan, magenta, and yellow (CMY) which produce black when mixed in certain amounts. In printing, black is often added to give more definition as mixing of actual inks cannot produce pure black.

terminator

A device that stops electronic signals, and prevents them from proceeding or returning to other devices. This is necessary to stop a signal from continuously reflecting between devices.

threshold

A reference point that is used to determine whether data will be processed as "on" or "off". In the case of color image data, "on" means that a certain color will appear in a pixel or dot, and "off" means that color will not appear there.

tone correction

A method of adjusting the tone curve so that the reproduction results on different types of output devices have gradations similar to the original image.

tone curve

The graph that shows the contrast ratio between the input (original image) and output (image data) in image processing.

unsharp mask

Originally a photographic process in which a sharply focussed and a slightly out-of-focus image are combined to produce a sharper image. This process is simulated by software to produce the same effect.

Index

A

- AAS, 2-12
- Adjusting
 - Gamma, 1-9
 - Gray Balance Intensity, 1-13
 - Highlight, 1-7
 - Saturation, 1-15
 - Shadow, 1-8
- Advanced button, 1-2
- Advanced menu, 1-3, 2-4
- Applying preset tone curve, 1-10
- Auto area segmentation, 2-12
- Auto exposure, 2-24
- Auto Exposure on Preview, 2-30
- Auto locate, 2-25
- Automatic Document Feeder, 2-7, 2-8
- Automatic Preview, 2-30

B

- B/W Options, 2-9, 2-12
- Batch Scan, 2-27
- Black & White Photo, 2-8, 2-9
- Button
 - Advanced, 1-2
 - Auto exposure, 2-24
 - Auto locate, 2-25
 - Batch Scan, 2-27
 - Color Adjustment, 2-23
 - Configuration, 2-29
 - Destination, 2-14
 - Easy, 1-3
 - Image Controls, 2-18
 - Image Type, 2-9
 - locking image size, 2-16, 2-17
 - Preview, 2-5
 - Reset, 2-25
 - Settings, 2-27
 - Tone Correction, 2-21
 - Zoom preview, 2-5

C

- Calibration utility, 4-2
- Channels, 1-17
- Channels options, 2-21, 2-22
- Color Adjustment, 2-23
- Color cast (tinting), 1-13
- Color Photo, 2-8
- Color Photo De-screening, 2-8, 2-9
- ColorSync, 2-31, 4-8
- Copy & Fax, 2-8, 2-9
- Cross hatch patterns, 5-3
- Curve name, 1-18

D

- Darken, 1-10, 1-18
- De-screening, 2-9, 2-11
- Destination, 2-13
- Destination Name, 2-14
- Dialog
 - Color Adjustment, 2-23
 - Configuration, 2-29
 - Destination, 2-14
 - Image Controls, 2-18
 - Image Type, 2-9
 - Settings, 2-27
- Displaying the preview images, 1-6
- Document source, 2-7
- Dropout, 2-9, 2-11

E

- Easy button, 1-3
- Easy menu, 1-2, 2-3
- EPSON Instant Photo Print, 3-2
- EPSON Stylus Printer (Fine), 2-13
- EPSON Stylus Printer (Photo), 2-13
- EPSON TWAIN, 2-2
- Exposure, 2-18, 2-19

F

Fast Preview, 2-30
Fax, 2-13
File size, 2-17
Film Adapter, 2-7
Flatbed, 2-7
Flat Contrast, 1-10, 1-18

G

Gamma, 1-9, 2-18, 2-19
Gray Balance Intensity, 1-13, 2-23

H

Halftone, 2-9, 2-10
Height, 2-16
High Contrast, 1-10, 1-18
Highlight, 1-7, 2-18, 2-19

I

ICM, 2-30, 4-6
ICM/sRGB, 2-30, 4-6
Image Controls, 2-18
Image sizes, 2-16
Image Type, 2-8
Image Type Name, 2-9, 2-10

L

Laser Printer, 2-13
Lighten, 1-10, 1-18
Linear, 1-10, 1-18
Line Art, 2-8, 2-9
List

- Destination, 2-13
- Document Source, 2-7
- Image Type, 2-8
- User defined settings, 2-27

Loading paper, 3-8
Lock button, 2-16, 2-17

M

Manually optimizing images, 1-5
Marquee, 2-6
Menu

- Advanced, 1-3
- Easy, 1-2
- selecting, 1-2

Moiré, 5-3

O

OCR (Optical Character Recognition),
1-20, 2-8, 2-9, 2-13
OCR scanning

- improving character recognition, 1-20
- potential text recognition
problems, 1-22
- scanning text, 1-20

Open Shadow, 1-10, 1-18
Optimizing image, 1-4
Output options, 2-21, 2-22
Output values, 1-17

P

Pixel Depth, 2-9, 2-10
Placing

- 35 mm film, 3-6
- 35 mm slides, 3-7
- film or photo, 3-5
- photo, 3-5

Preview button, 2-5
Previewing images, 1-6, 2-5

R

Reset, 2-25
Resetting image control settings, 2-25
Resolution, 2-14, 2-16, 2-17

S

- Saturation, 1-15, 2-23, 2-24
- Save Preview Image and Settings, 2-29
- Scale, 2-16
- Scale bar, 2-17
- Scale indicator, 2-18
- Scanning
 - negative film, 2-8
 - positive film (or slides), 2-8
 - text, 1-20
- Scanning Mode, 2-9, 2-11
- Screen/Web, 2-13
- Screen Calibration utility, 4-2
- Selecting a menu, 1-2
- Shadow, 1-8, 2-18, 2-20
- Source image size, 2-16
- sRGB, 4-6
- Starting
 - EPSON Instant Photo Print, 3-3
 - scanning and printing, 3-8
- Storage size, 2-16, 2-17

T

- Target image size, 2-16
- TET, 2-12
- Text enhancement technology, 2-12
- Threshold, 2-18, 2-20
- Tone Correction, 2-21
- Tone Correction dialog box, 1-16
- Tone correction list, 1-18, 2-21, 2-22
- Tone curve, 1-10, 1-15
- Tone curve editor, 1-17, 2-21
- TPU for Neg. Film, 2-7, 2-8
- TPU for Pos. Film, 2-7, 2-8

U

- Unit, 2-16
- Unit of measurement, 2-17
- Unsharp mask, 2-15
- Using several variations of settings, 2-28
- Using tone curve, 1-15

W

- Width, 2-16
- Width and height of image, 2-16

Z

- Zoom preview button, 2-5

EPSON OVERSEAS MARKETING LOCATIONS

EPSON AMERICA, INC.

20770 Madrona Ave.
P.O. Box 2842
Torrance, CA 90509-2842
Phone: (800) 922-8911
Fax: (310) 782-5220

EPSON UK LTD.

Campus 100, Maylands Avenue,
Hemel Hempstead, Herts,
HP2 7TJ, U.K.
Phone: (+44) 01442 261144
Fax: (+44) 01442 227227

EPSON DEUTSCHLAND GmbH

Zülpicher Straße 6,
40549 Düsseldorf Germany
Phone: (0211) 56030
Fax: (0211) 5047787

EPSON FRANCE S.A.

68 bis, rue Marjolin
92300, Levallois-Perret, France
Phone: 33.1.40.87.37.37
Telex: 610657

EPSON AUSTRALIA PTY. LTD.

70 GIBBES STREET, CHATSWOOD 2067 NSW.
Phone: 2-9903-9000
Fax: 2-9903-9177

EPSON SINGAPORE PTE. LTD.

No. 1 Temasek Avenue #36-00
Millenia Tower, Singapore 039192
Phone: (065) 33 77 911
Fax: (065) 33 41 185

EPSON HONG KONG LTD.

Rooms 4706-10, 47/F,
China Resources Bldg.,
26 Harbour Road, Wanchai, Hong Kong
Phone: 2585-4300
Fax: 2827-7083

EPSON TAIWAN TECHNOLOGY & TRADING LTD.

10F, No. 287 Nanking E. Road, Sec. 3,
Taipei, Taiwan, R.O.C.
Phone: (02) 717-7360
Fax: (02) 712-9164

EPSON ITALIA S.p.A.

V.le F.lli Casiraghi 427
20099 Sesto S.Giovanni
MI, Italy
Phone: 2-262331
Fax: 2-2440750

EPSON IBERICA S.A.

Av. de Roma, 18-26
08290 Cerdanyola del Valles
Barcelona, Spain
Phone: 582. 15.00
Fax: 582. 15.55

**SEIKO EPSON CORPORATION
(Hirooka Office)**

80 Harashinden, Hirooka
Shiojiri-shi, Nagano-ken
399-0785 Japan

EPSON PORTUGAL, S.A.

R. do Progresso, 471, 1° Perafita
4460 Matosinhos, Portugal
Phone: (02) 996 14 02
Fax: (02) 996 14 11

EPSON

Color Image Scanner

Perfection 1200
Software Reference Guide