

EPSON

EPSON STYLUS™ PHOTO RX600

Setup

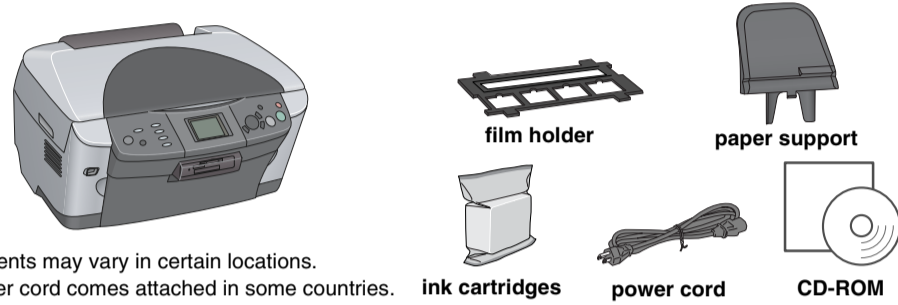
4048677-00
XXX

Cautions and Notes

- Cautions must be observed to avoid damage to your equipment.**
- Notes contain important information and useful tips on the operation of this product.

1 Unpacking

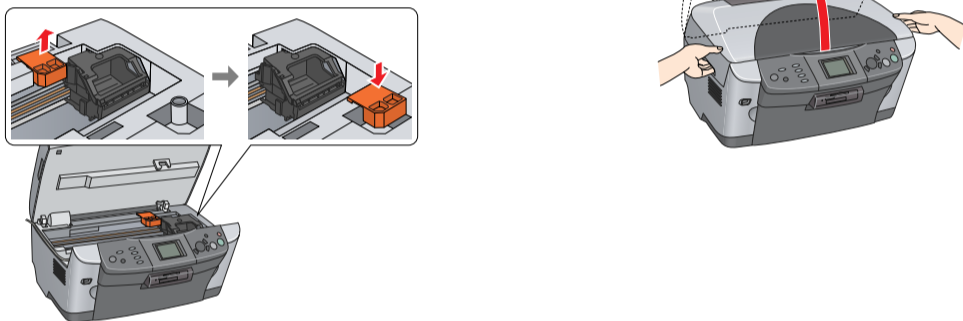
Make sure the following parts are included and not damaged.



The contents may vary in certain locations. The power cord comes attached in some countries.

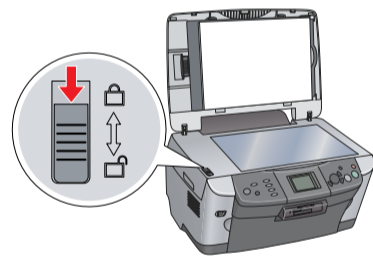
2 Removing the Protective Material

- Open the scanner unit.
- Remove the tapes and take out the protective material, then put it in a safe place for future use.



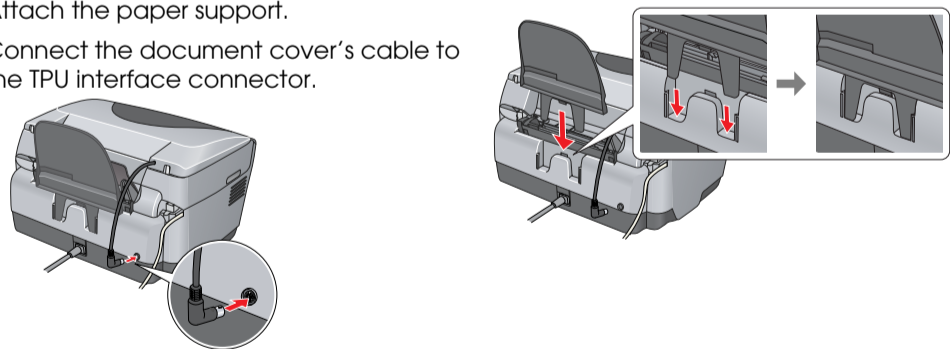
3 Unlocking

Open the document cover and slide the transportation lock lever.



4 Attaching the Parts

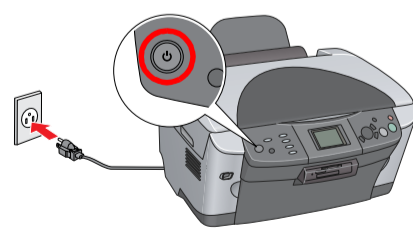
- Attach the paper support.
- Connect the document cover's cable to the TPU interface connector.



5 Turning On

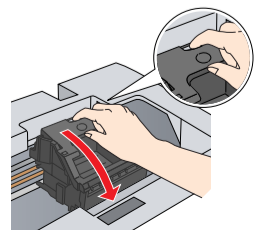
Plug in the power cord and press the On button to turn on this product.

Note: Do not connect this product to your computer before step 10, or you will fail to install the software.

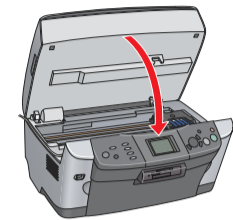
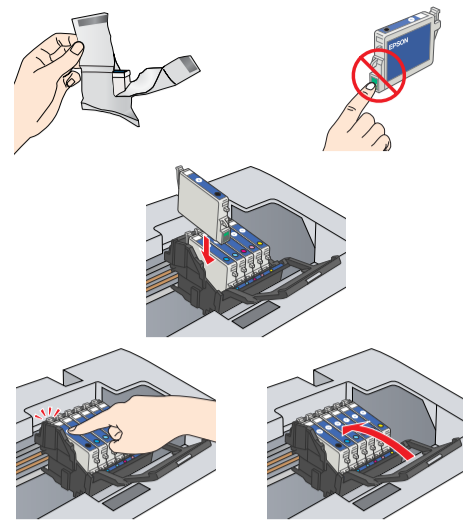


6 Installing Ink Cartridges

- Open the scanner unit.
- Open the cartridge cover.



- Remove an ink cartridge from its package.
- Place all the cartridge into its holder.
- Then, push the ink cartridge down until it clicks into place and close the cartridge cover.
- Lower the scanner unit.

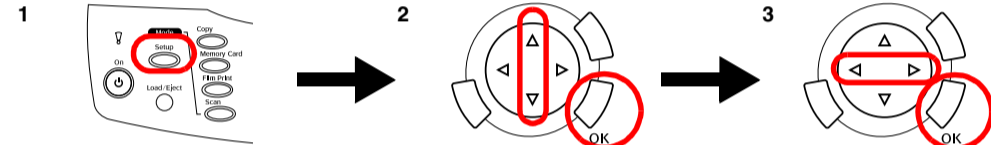


Ink charging starts and it takes about two minutes to complete. Initial charge, Charging, Please wait, appears on the LCD panel and this product produces a variety of mechanical sounds. This is normal.

- Caution:** Never turn off this product during the ink charging process.
- Do not load paper until ink charging is complete.

7 Selecting a Language

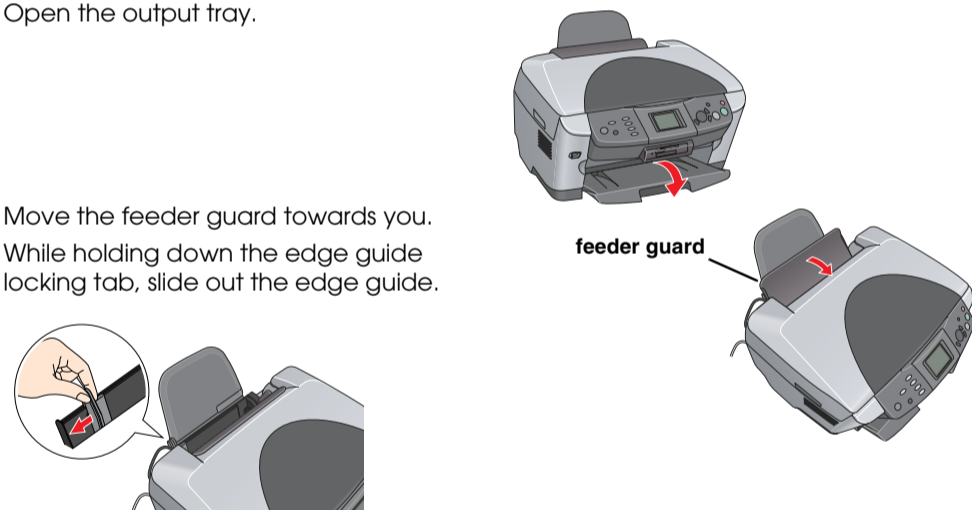
- Press the Setup button.
- Select Language by using the ▲/▼ buttons and press the OK button.
- Use the ◀/▶ buttons to select a language and press the OK button.



Menu items appear in the selected language.

8 Loading Paper

- Open the output tray.
- Move the feeder guard towards you.
- While holding down the edge guide locking tab, slide out the edge guide.



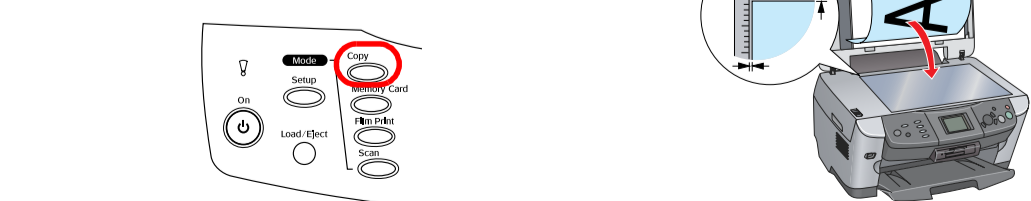
- Load the stack of paper with the printable side facing down and resting against the guide of feeder guard.
- Stand the stack of paper against the paper support, then move the feeder guard back.



Now you are ready to use this product as a stand-alone device. See the next section to learn how to make a test copy. If you want to install software, see "Connecting to Your Computer" on this sheet.

9 Making Copies

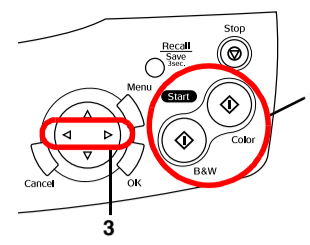
- Place a document on the document table.
- Press the Copy button to enter the Copy Mode.



- Use the ◀/▶ buttons to set the number of copies.
- Press the ◊ B&W button (to copy in grayscale), or the ◊ Color button (to copy in color).

This product starts Copying.

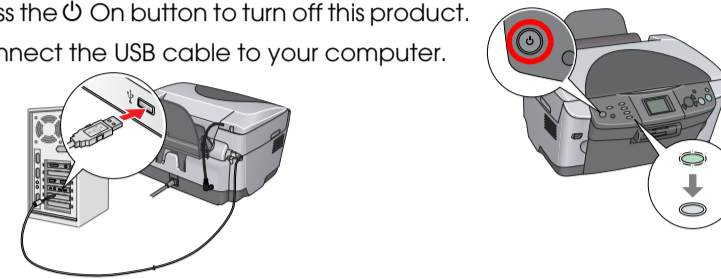
Caution: Do not open the scanner unit during scanning or copying; otherwise, you may damage this product.



This product has a variety of copy functions. See "Features" on this sheet or Basic Operation Guide. To use this product with your computer, see next step.

10 Connecting to your Computer

- Press the On button to turn off this product.
- Connect the USB cable to your computer.

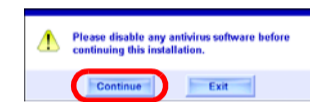


11 Installing the Software

Note: If your CD is labeled "Multilingual CD", you must install the English software from the English CD first. Next, install your preferred language addition from the Multilingual CD.

For Windows

- Make sure this product is connected and turned off, then insert the software CD.
- Turn off all virus protection programs and then click Continue.



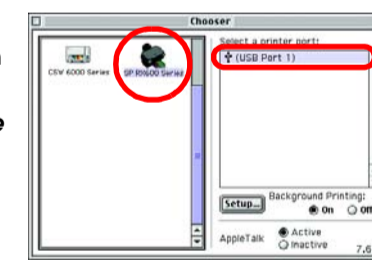
- Read the license agreement. If you agree with the terms, click Agree.
- Click Install, and then follow the onscreen instructions.
- When you see this screen, turn on this product and wait until the screen disappears. Then follow the onscreen instructions. Note that EPSON Smart Panel is installed in several steps.



- Click Exit or Restart Now on the final screen, then remove the CD-ROM.
- Now you are ready to scan and print. See the Reference Guide for instructions.

For Mac OS 8.6 to 9.X

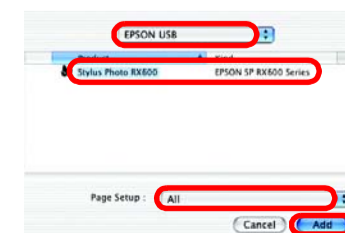
- Make sure this product is connected and turned off, then insert the software CD.
- Double-click the EPSON icon in the software CD after inserting it.
- Follow steps 2 to 6 in "Installing the software for Windows".
- Open Chooser from the Apple menu.
- Select SP RX600 Series and your USB port, and then close Chooser.



Now you are ready to scan and print. See the Reference Guide for instructions.

For Mac OS X

- Make sure this product is connected turned off, then insert the software CD.
- Open the Mac OS X folder and then double-click the EPSON icon after inserting the software CD.
- Follow steps 2 to 6 in "Installing the software for Windows".
- Open the Applications folder on your hard drive, and then open the Utilities folder and double-click Print Center icon.
- Click Add icon in the Printer List dialog box.
- Select EPSON USB, click Stylus Photo RX600, and then select All from the Page Setup pop-up menu. Finally, click Add.
- Make sure the Printer List contains the printer options (margin-type) options, then close the Printer List dialog box.



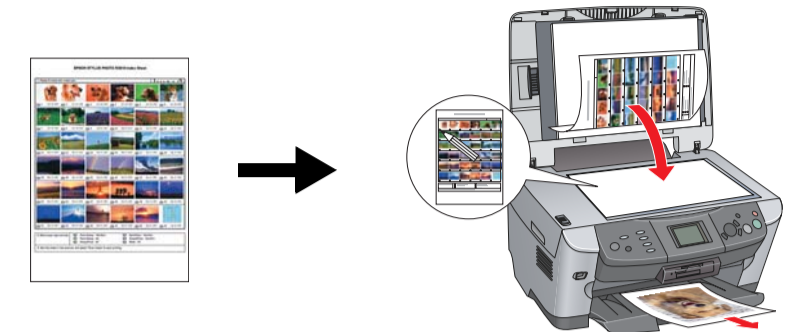
Now you are ready to scan and print. See the Reference Guide for instructions.

Features

This product provides you with a variety of stand-alone functions as outlined in this section. See the Basic Operation Guide for details.

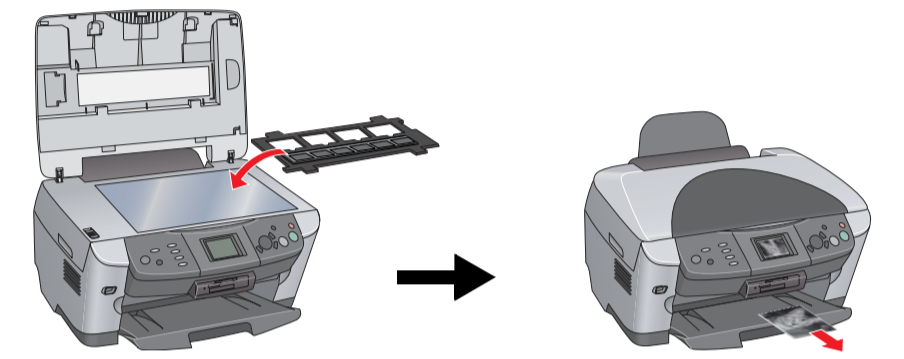
Printing using an index sheet

You can easily print photos directly from a memory card by filling an index sheet feeling like developing photos.



Printing from film

You can print photos directly from film by scanning the film and selecting the photo data with LCD panel.



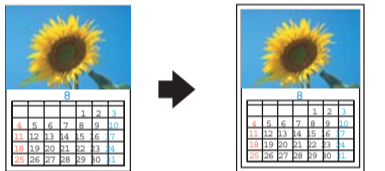
Copying

Copies can be made with a variety options without connecting to a computer.

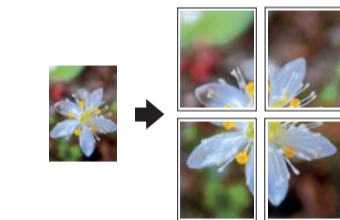
BorderFree



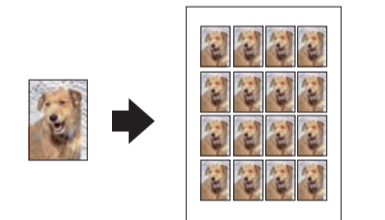
Small Margin



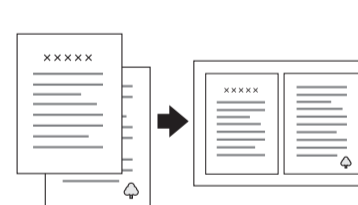
Poster



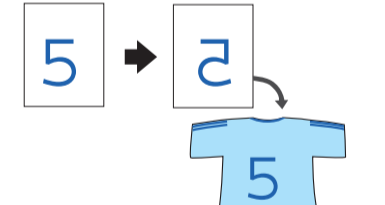
Repeat



2-up



Mirror



Using a Memory Card

The built-in memory card slot allow you to do the followings:

- Print directly from a memory card.
- Scan and save an image directly to a memory card.
- Transfer the data stored on a memory card to your computer. (See the Reference Guide.)

Getting More Information

Getting started (Paper manual)

Contents	Describes in short how you can start using this product in standalone mode. For full operation details, please refer to the Basic Operation Guide.
----------	--

Reference Guide (Viewing on the computer)

Contents	Basic information on printing and scanning, Maintenance and troubleshooting tips, Technical and customer support information.
How to access	Double - click the ESPRX600 Reference Guide icon on the desktop.

Basic Operation Guide (Viewing on the computer)

Contents	Describes how to use this product as a copy machine, change ink cartridges and check the condition of this product. It also provides troubleshooting tips and customer support information.
How to access	Double - click the ESPRX600 Basic Operation Guide icon on the desktop.