

Color Ink Jet Printer

# EPSON STYLUS™ PHOTO R300 Series

# Setup

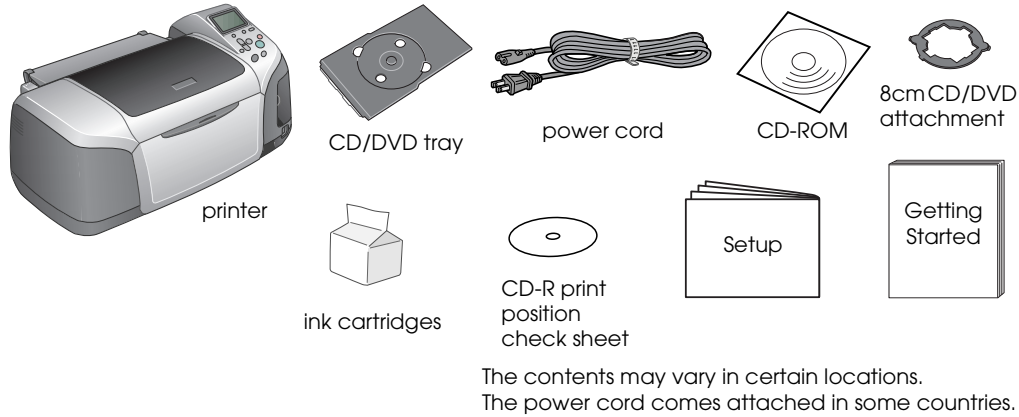
4046427-00  
xxx

EPSON

English

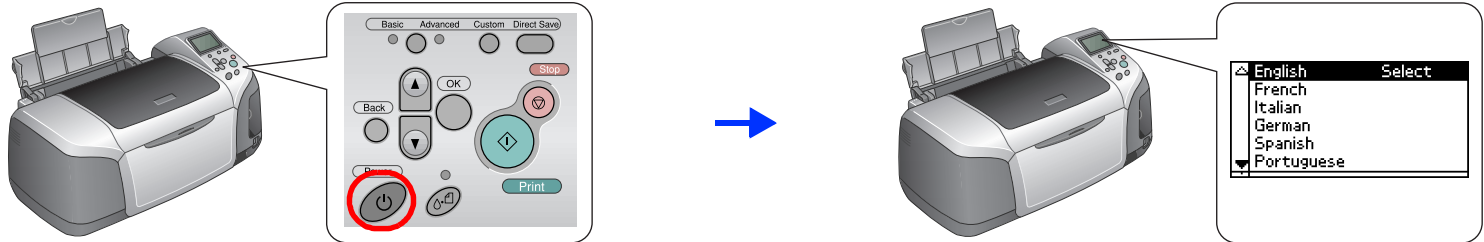
## 1 Unpacking

1. Remove the contents from the box. Remove all packing tape and packing material from outside and inside the printer. Be sure not to touch the ribbon cable inside the printer.
2. Open the paper support, then slide out the extension and plug in the printer.

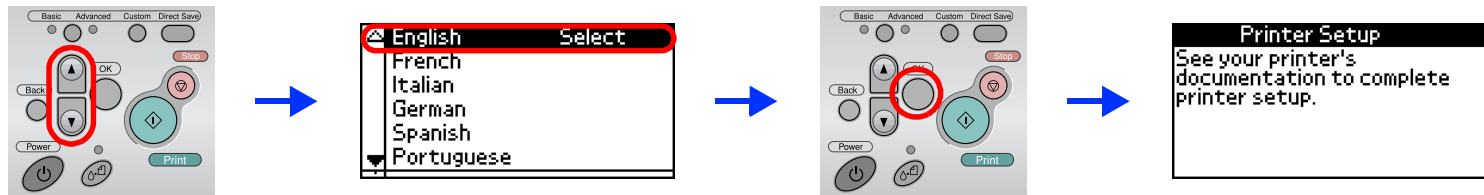


## 2 Installing the Ink Cartridges

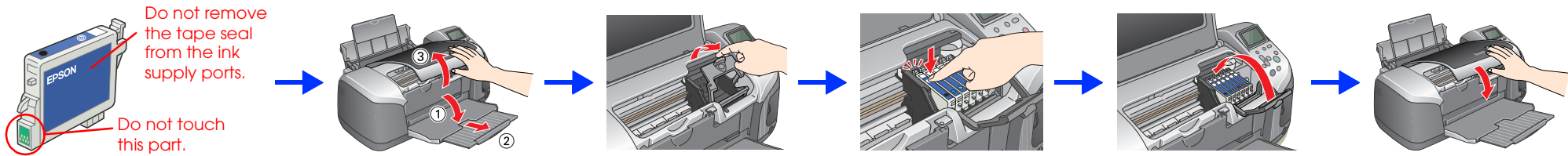
1. Press the power button to turn on the printer.



2. Press the or button to highlight your preferred language, then press the OK button.



3. Remove the ink cartridges from their protective bags, then install the ink cartridges as shown below.



### Caution:

- Do not shake the ink cartridges; this can cause leakage.
- Be careful not to break the hook on the side of the ink cartridge when you remove it from the protective bag.
- Do not remove or tear the label on the cartridge; this can cause leakage.
- Do not move the print head by hand; otherwise, you may damage the printer.
- Push the ink cartridge down until it clicks into place.
- Do not load paper until ink charging is complete.

### Note:

Install all ink cartridges. The printer will not work unless all cartridges are installed properly.

4. Press the maintenance button to start charging ink. Charging takes about one and a half minutes.



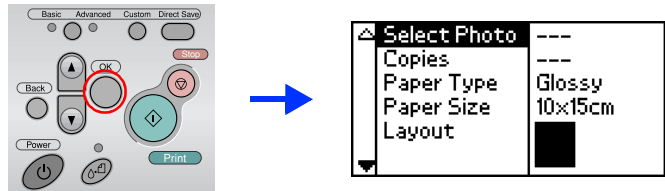
### Caution:

Do not turn off the printer during the ink charging process.

### Note:

The ink cartridges packaged with your printer are partly used during initial setup. In order to produce high quality printouts, the print head in your printer will be fully charged with ink. This one-off process consumes a quantity of ink and subsequent cartridge sets will last for their full rated life.

5. Press the OK button to finish.



Your printer is now set up and ready to print directly from a memory card. Refer to the Standalone Operation Guide for instructions.



Warnings must be followed carefully to avoid bodily injury.

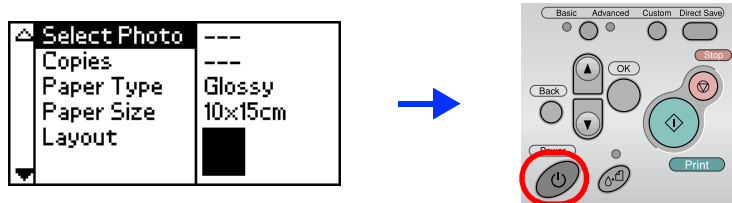


Cautions must be observed to avoid damage to your equipment.

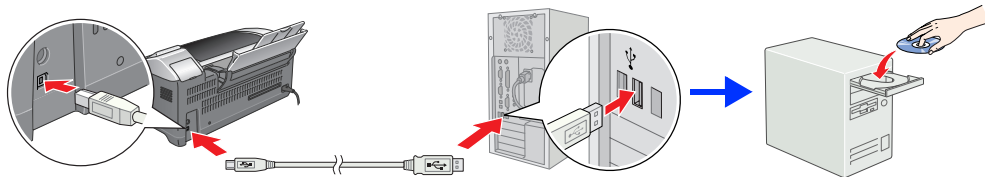
Notes contain important information and useful tips on the operation of your printer.

## 3 Installing the Printer Software

1. Press the power button to turn off the printer.



2. Connect the printer and computer with a USB cable, then insert the printer software CD into the CD-ROM drive.



3. Install the printer software.

Select your country or area of residence if the selection window appears. Then except where otherwise instructed, click or double-click the areas circled in red to proceed.



Caution: Turn off all virus protection programs before installing the printer software.

### Note:

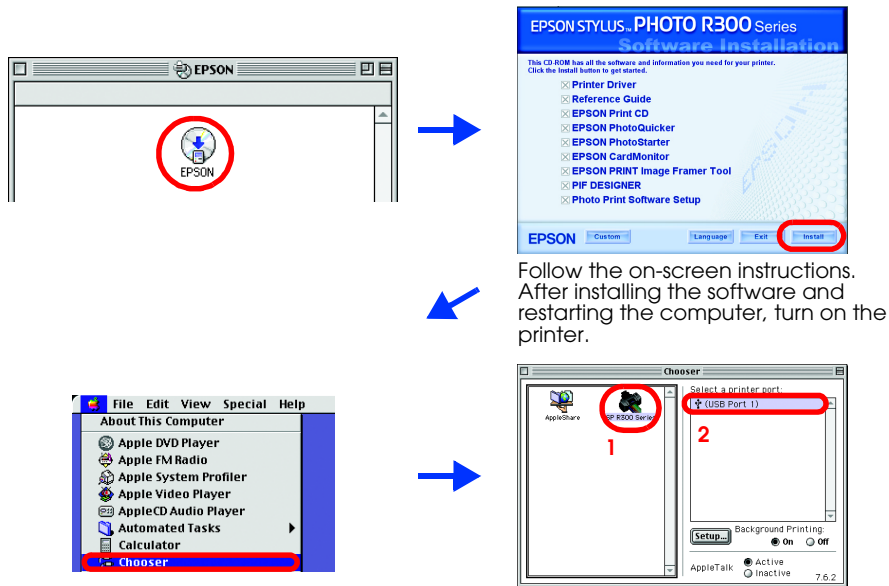
If the language selection window appears, select your preferred language.

### For Windows



Follow the on-screen instructions.

### For Mac OS 8.6 to 9.X



## 4 Viewing the Reference Guide

The Reference Guide provides detailed information about printing from a computer, printer maintenance, problem solving, and safety.

To view the Reference Guide, double-click the ESPR300 Reference Guide icon on the desktop.

In Windows, you can also access the Reference Guide via the Start menu. To do so, click **Start**, point to **All Programs** in Windows XP or **Programs** in Windows Me, 98, or 2000, point to **EPSON**, then select **ESPR300 Reference Guide**.

All rights reserved. No part of this publication may be reproduced, stored in a retrieval system, or transmitted in any form or by any means, electronic, mechanical, photocopying, recording, or otherwise, without the prior written permission of Seiko Epson Corporation. The information contained herein is designed only for use with this Epson printer. Epson is not responsible for any use of this information as applied to other printers. Neither Seiko Epson Corporation nor its affiliates shall be liable to the purchaser of this product or third parties for damages, losses, costs, or expenses incurred by the purchaser or third parties as a result of: accident, misuse, or abuse of this product or unauthorized modifications, repairs, or alterations to this product, or (excluding the U.S.) failure to strictly comply with Seiko Epson Corporation's operating and maintenance instructions.

Seiko Epson Corporation shall not be liable for any damages or problems arising from the use of any options or any consumable products other than those designated as Original Epson Products or Epson Approved Products by Seiko Epson Corporation. Seiko Epson Corporation shall not be held liable for any damage resulting from electromagnetic interference that occurs from the use of any interface cables other than those designated as Epson Approved Products by Seiko Epson Corporation. EPSON® is a registered trademark and EPSON Stylus™ is a trademark of Seiko Epson Corporation.

Microsoft® and Windows® are registered trademarks of Microsoft Corporation.

Apple® and Macintosh® are registered trademarks of Apple Computer, Inc.

Part of the photo data stored on the Printer Software CD-ROM is licensed from Design Exchange Co., Ltd. Copyright © 2000 Design Exchange Co., Ltd. All rights reserved.

General Notice: Other product names used herein are for identification purposes only and may be trademarks of their respective owners. Epson disclaims any and all rights in those marks.