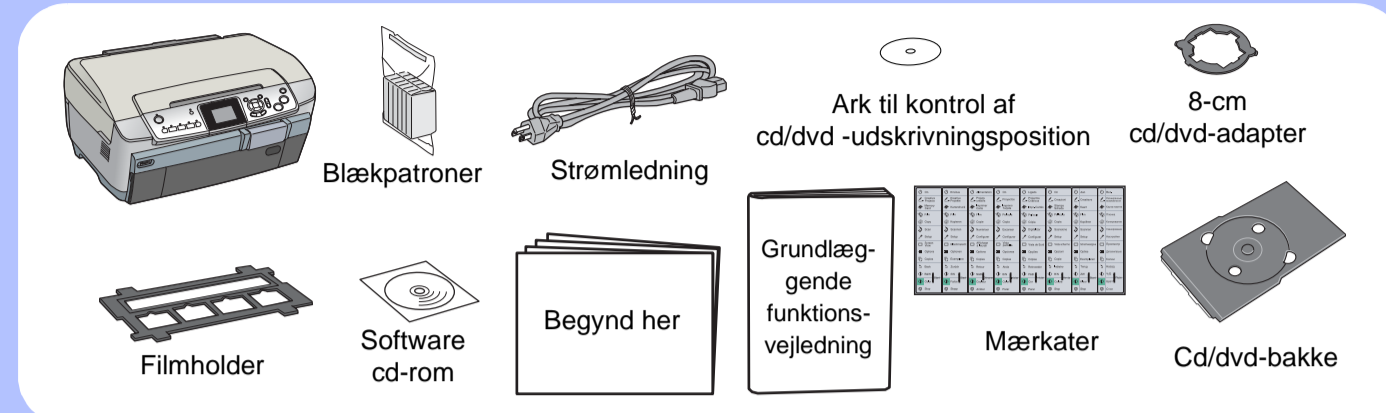
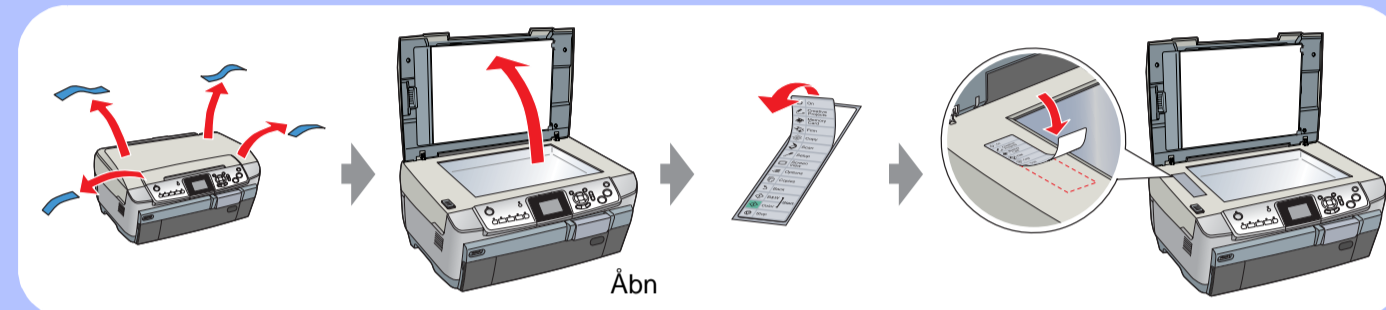


# Begynd her

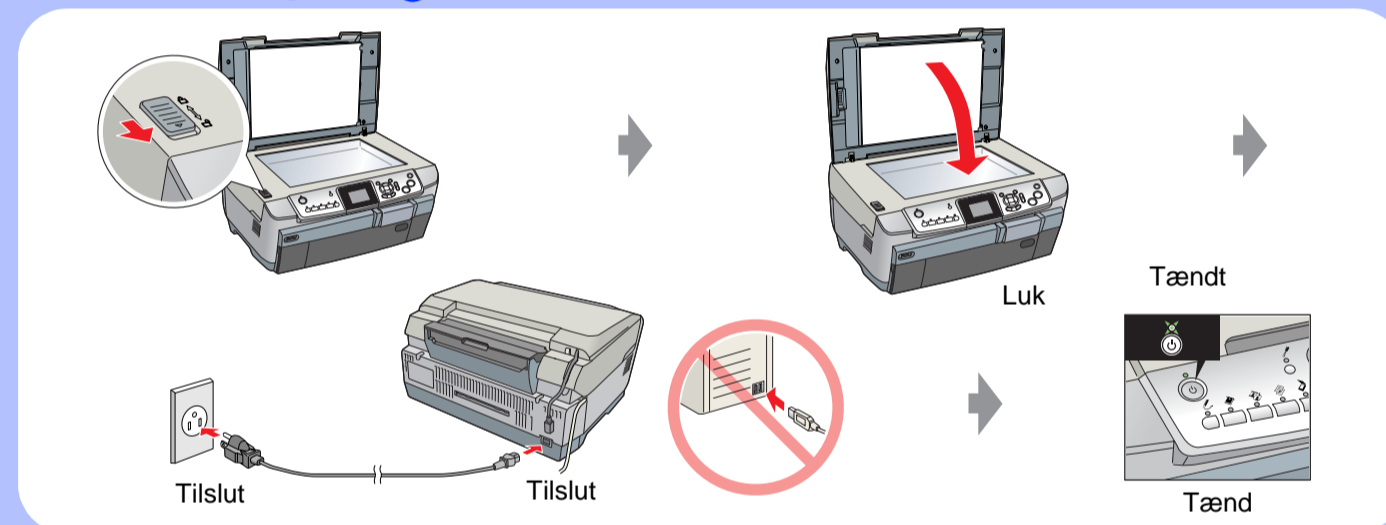
## 1. Udpakning



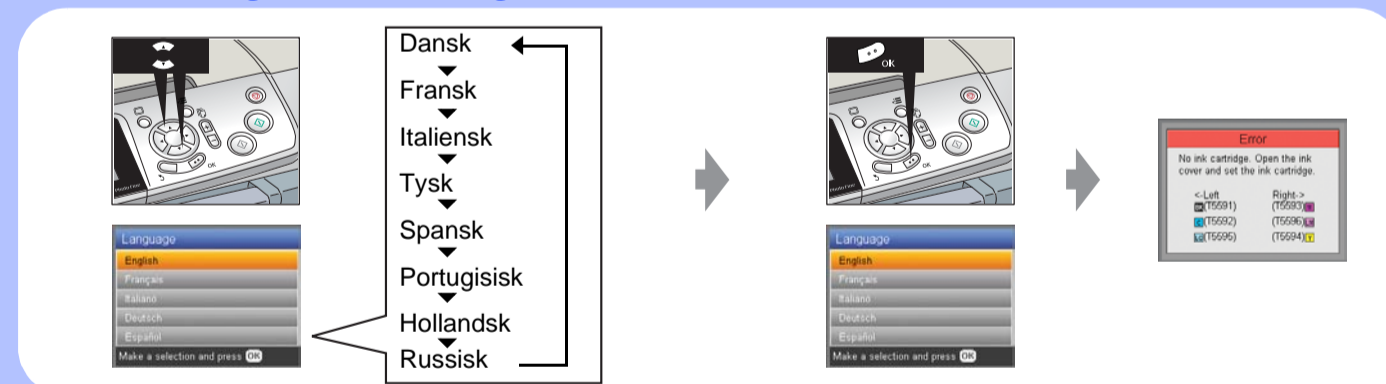
## 2. Fjern al tape, og sæt mærkaten på



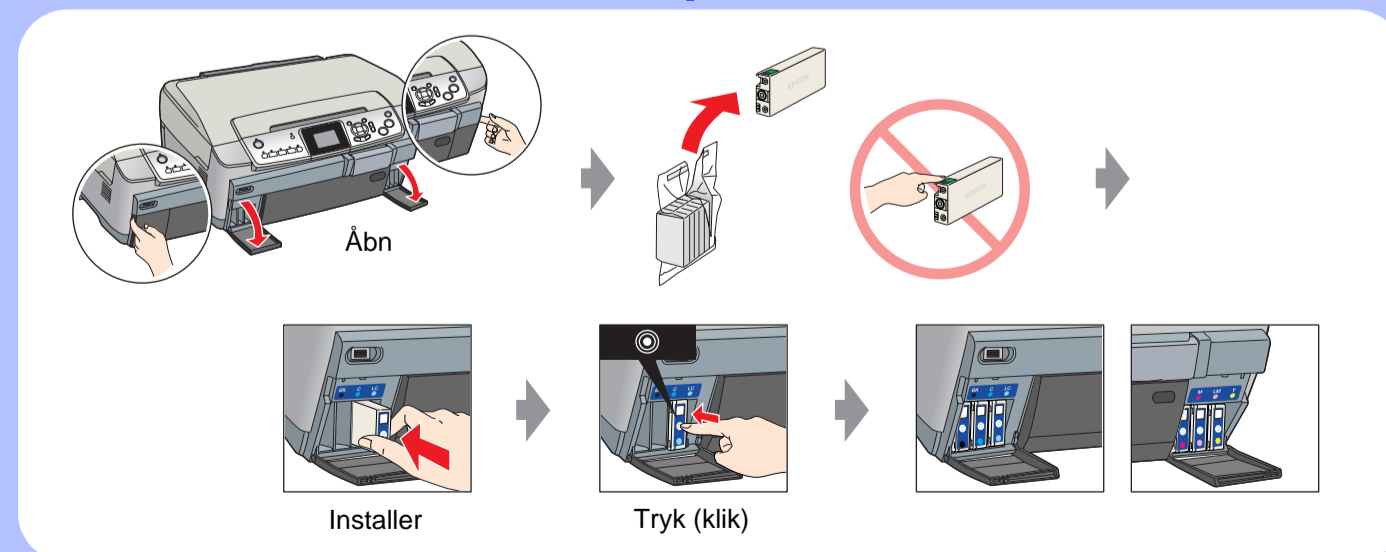
## 3. Lås op, og tænd



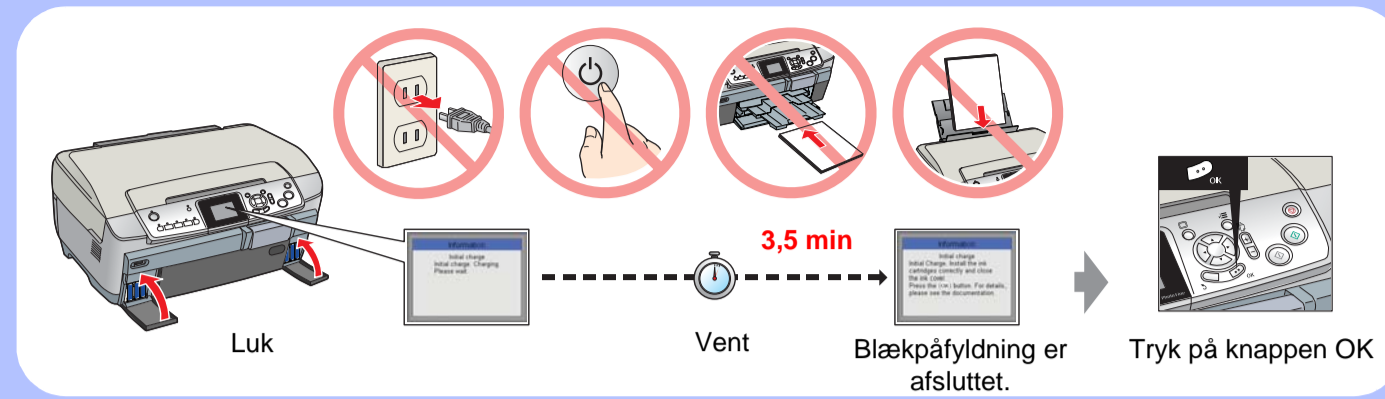
## 4. Valg af sprog



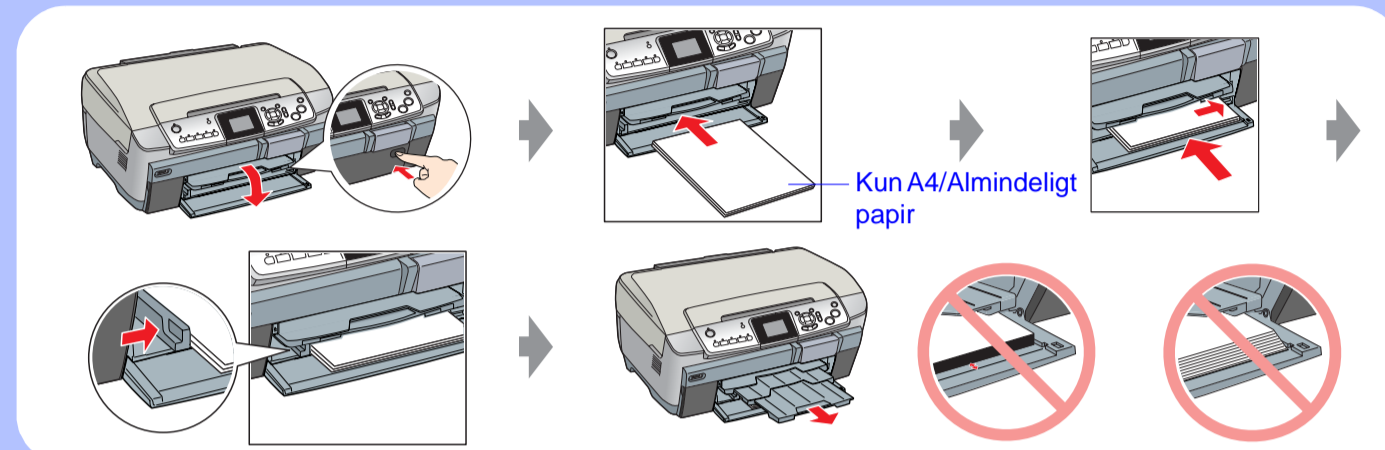
## 5. Installation af blækpatrone



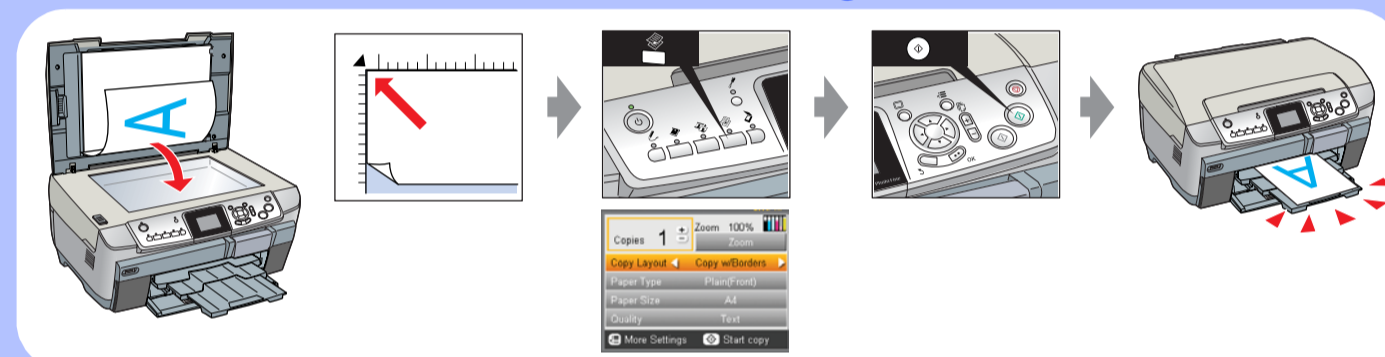
## 6. Blækpåfyldning



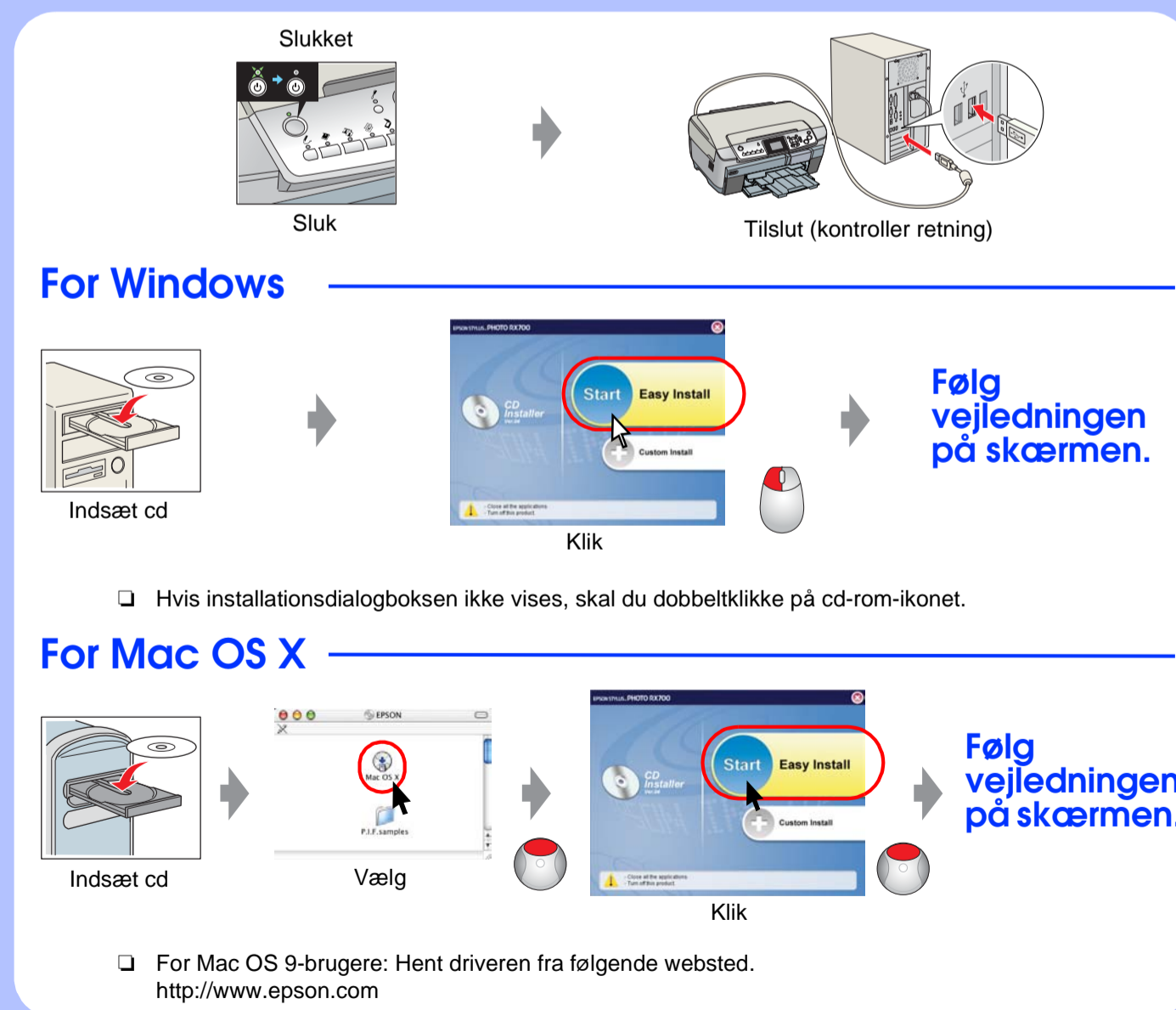
## 7. Ilægning af papir



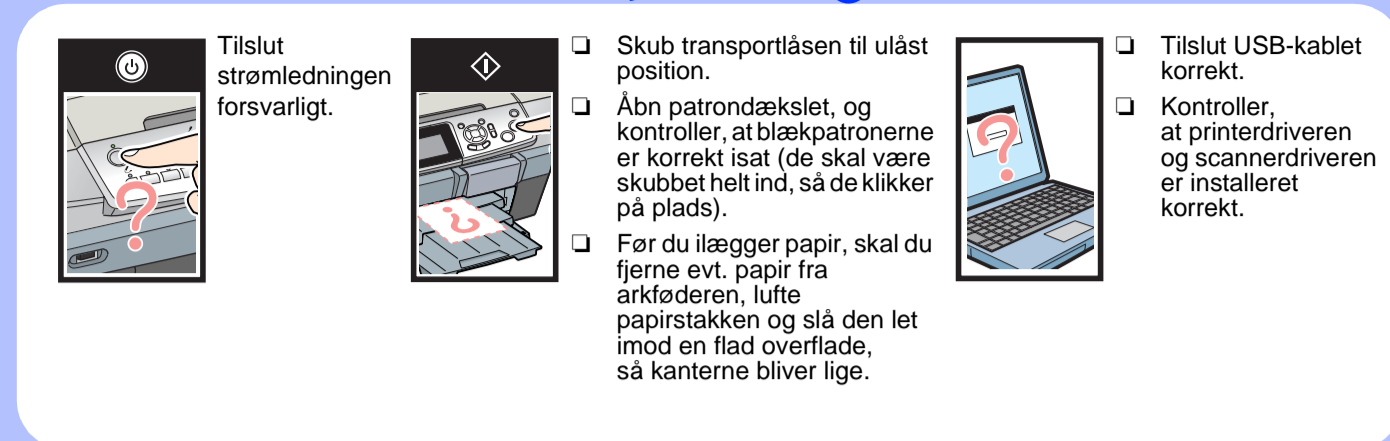
## 8. Udføre en prøvekopiering



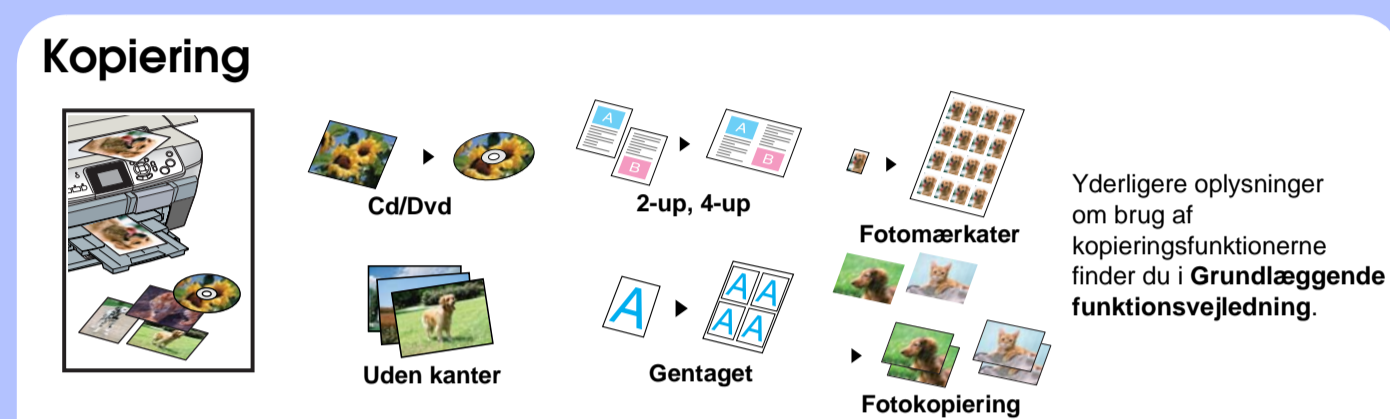
## 9. Tilslutning til en computer og installation af softwaren



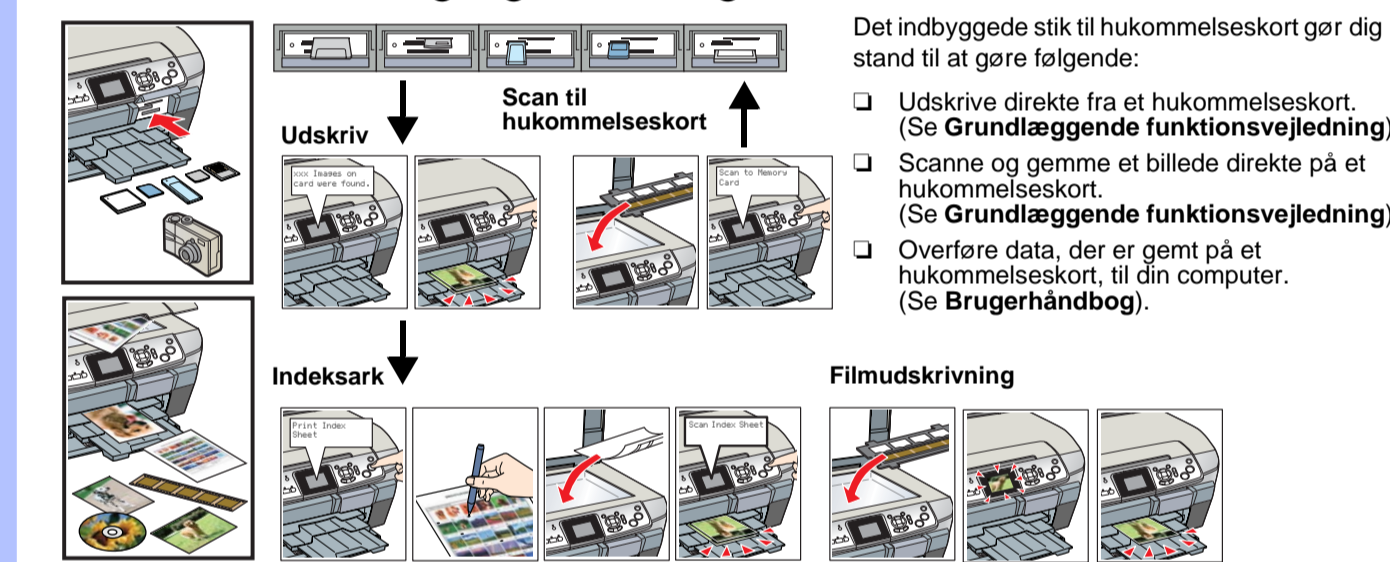
## Fejlfinding



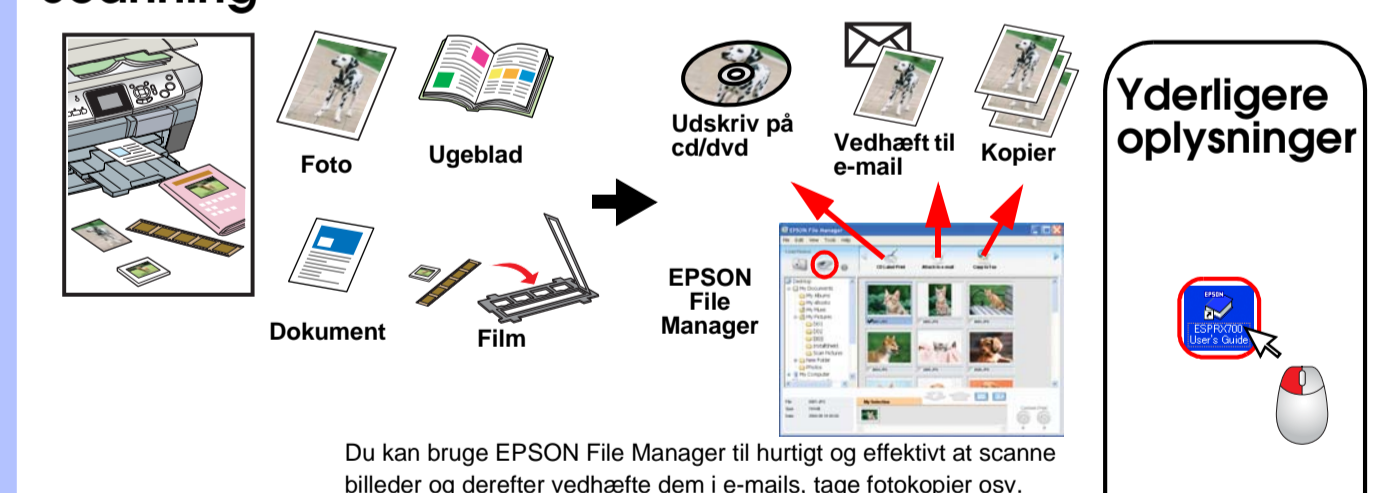
## Funktioner



## Direkte udskrivning og scanning



## Scanning



## Udskrivning

