

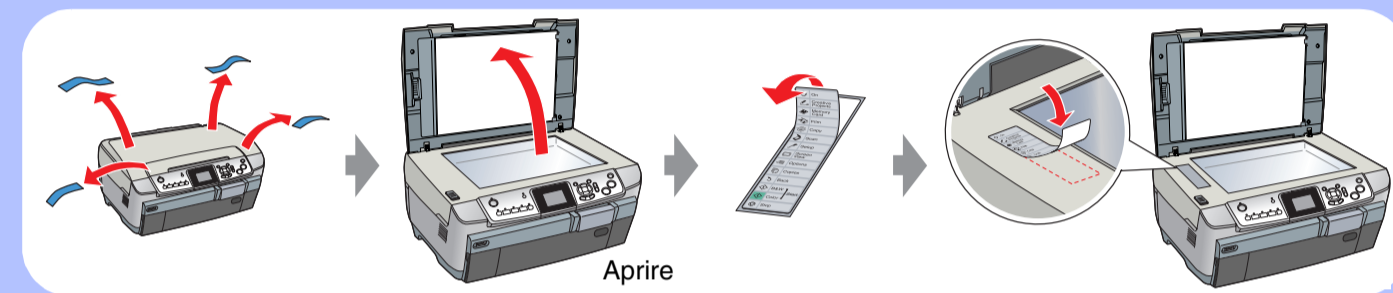
Inizia qui

Zie achterzijde voor instructies in het Nederlands.

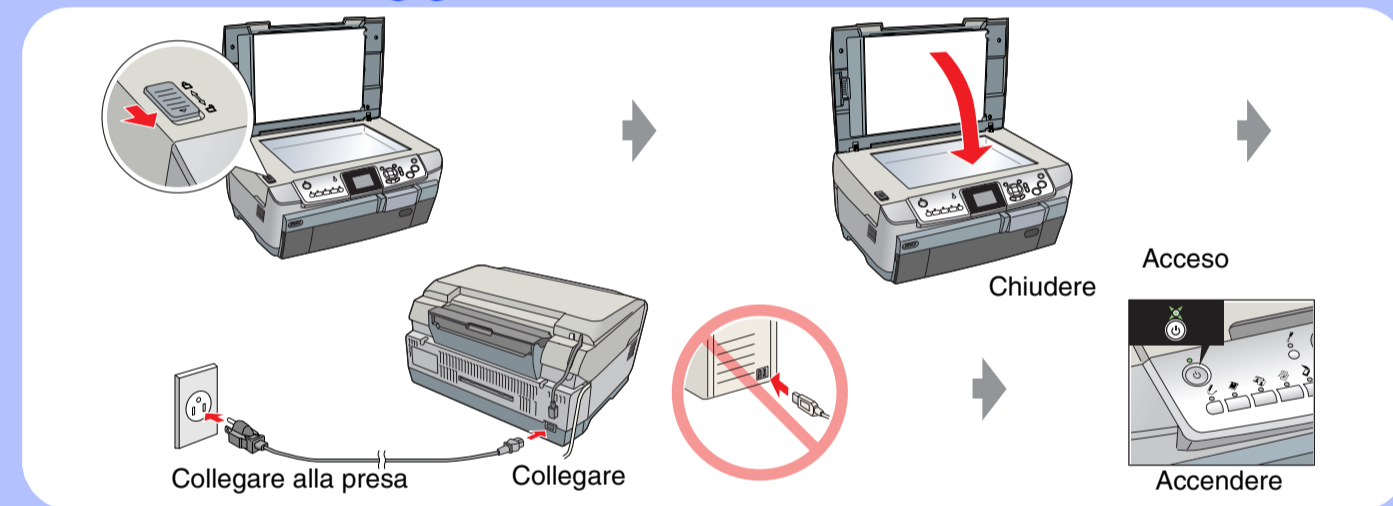
1. Disimballaggio



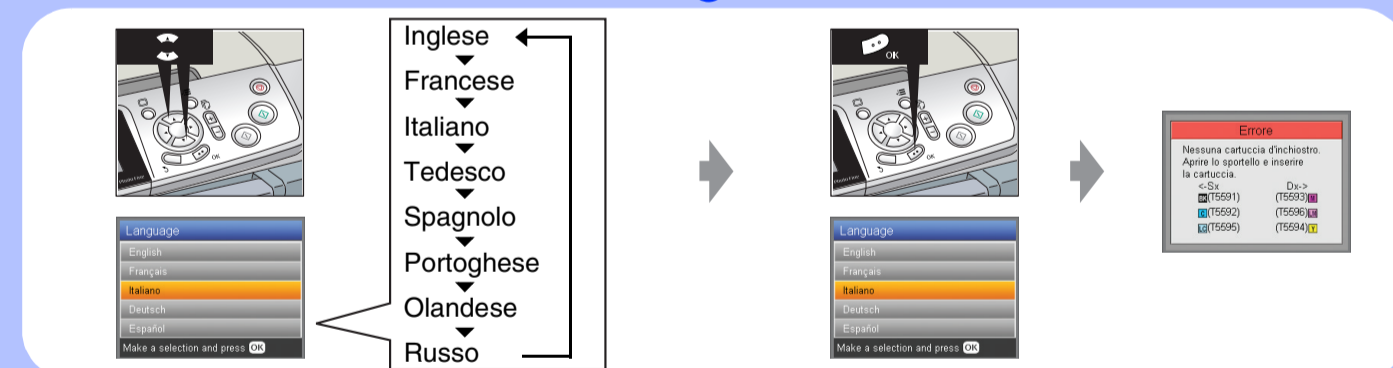
2. Rimozione dei nastri e applicazione dell'etichetta



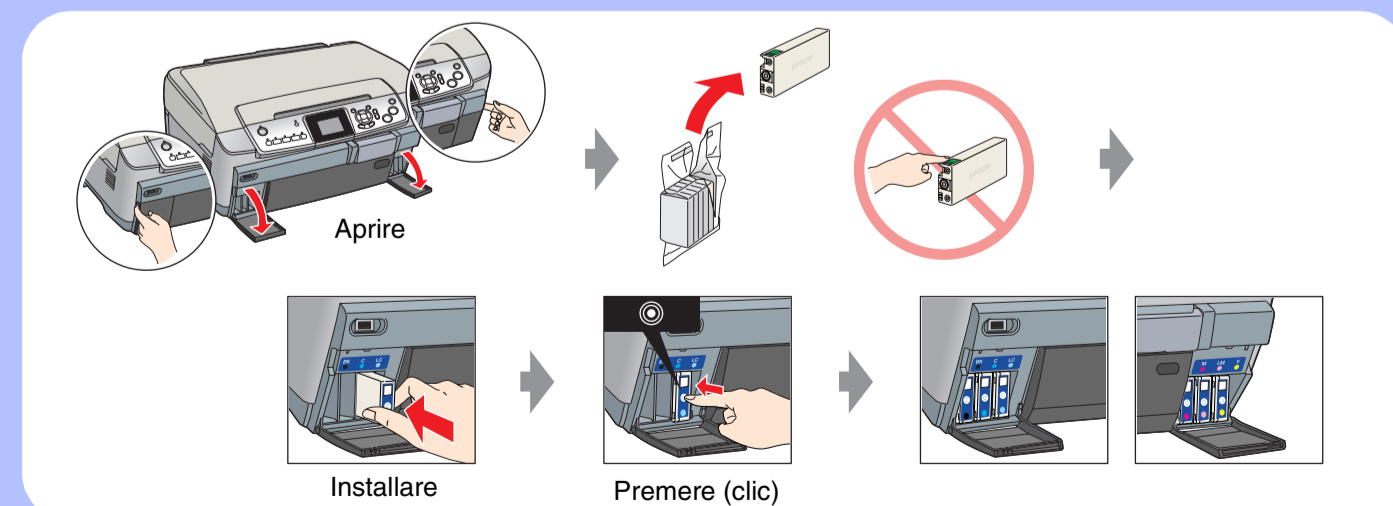
3. Sbloccaggio e accensione



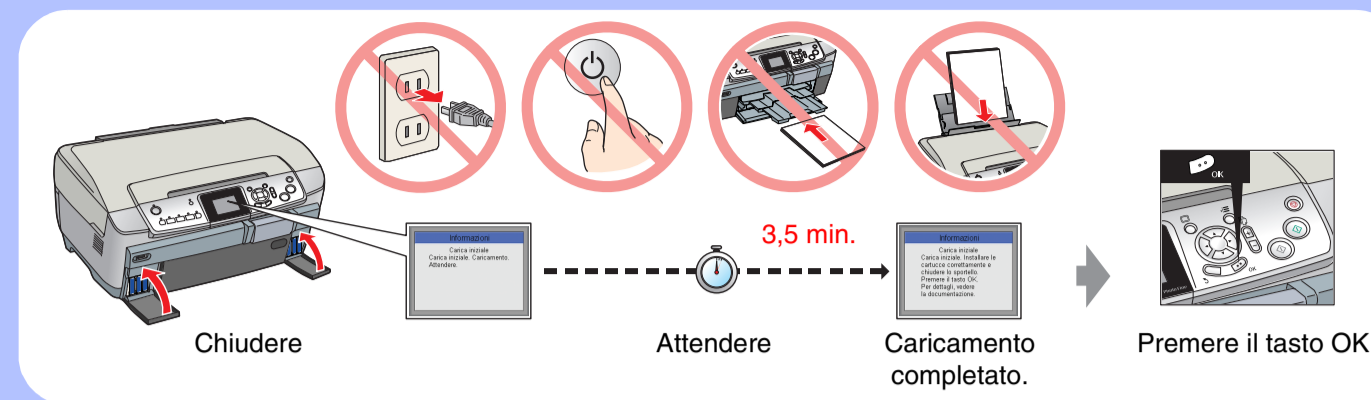
4. Selezione di una lingua



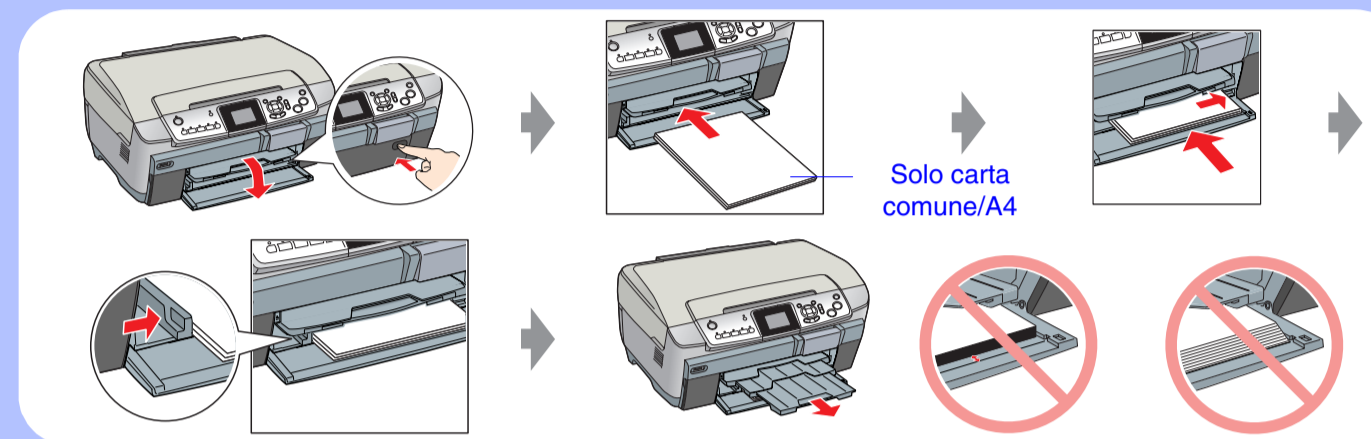
5. Installazione delle cartucce d'inchiostro



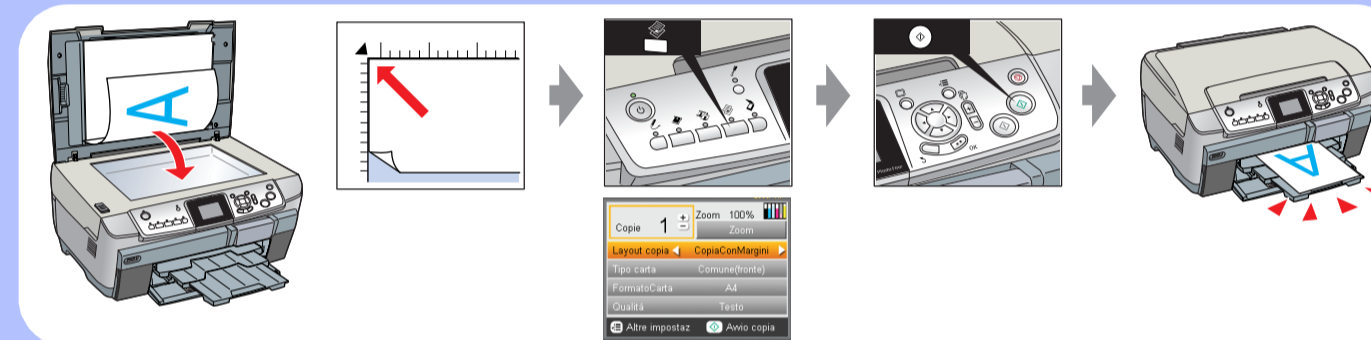
6. Caricamento dell'inchiostro



7. Caricamento della carta



8. Esecuzione di una copia di prova



9. Collegamento a un computer e installazione del software

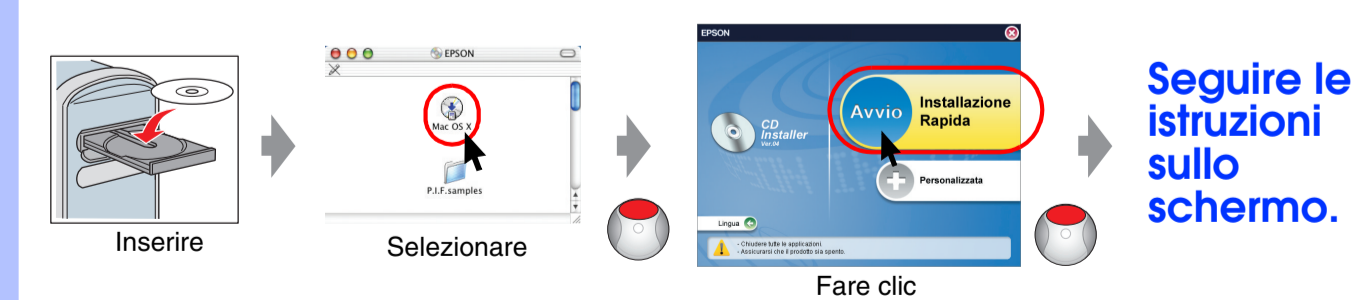


Per Windows



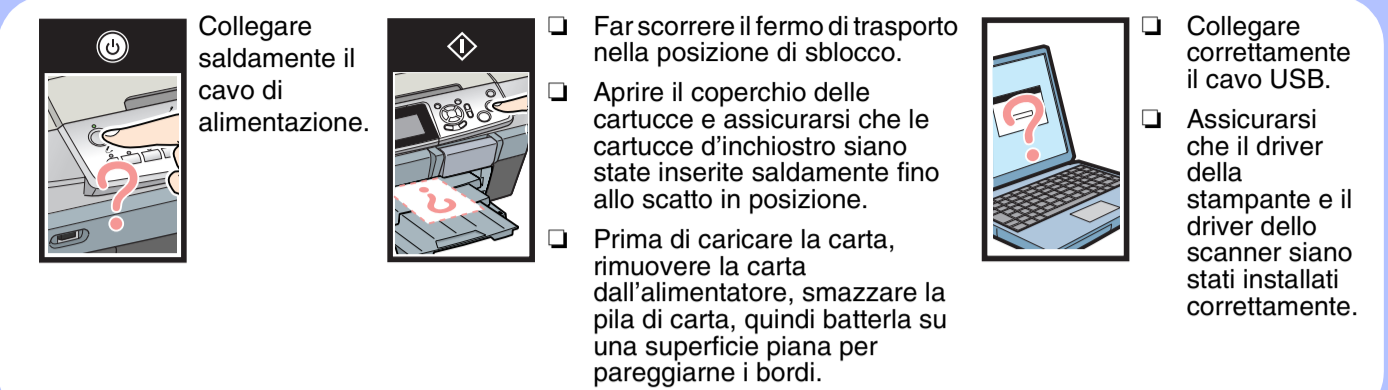
Se la finestra di dialogo del programma di installazione non viene visualizzata, fare doppio clic sull'icona del CD.

Per Mac OS X



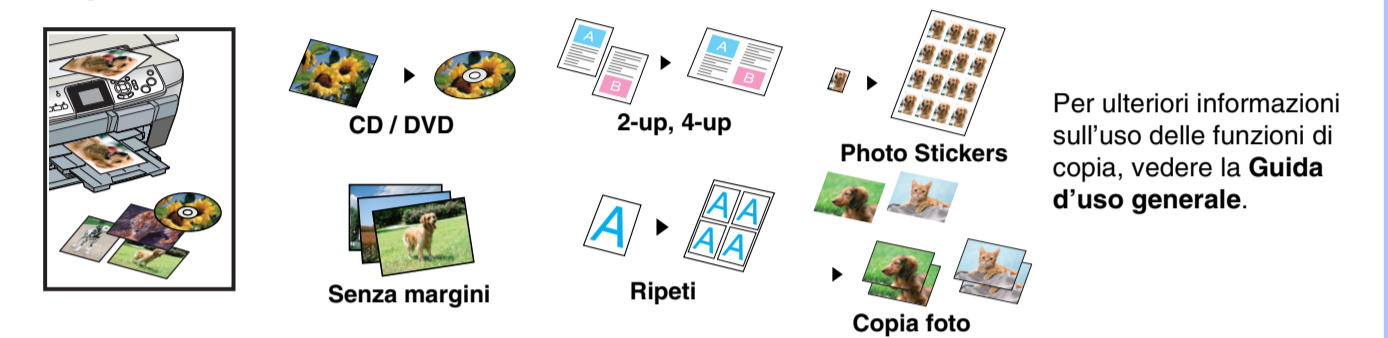
Per utenti di Mac OS 9: Accedere al seguente sito per scaricare il driver. www.epson.com

Risoluzione dei problemi

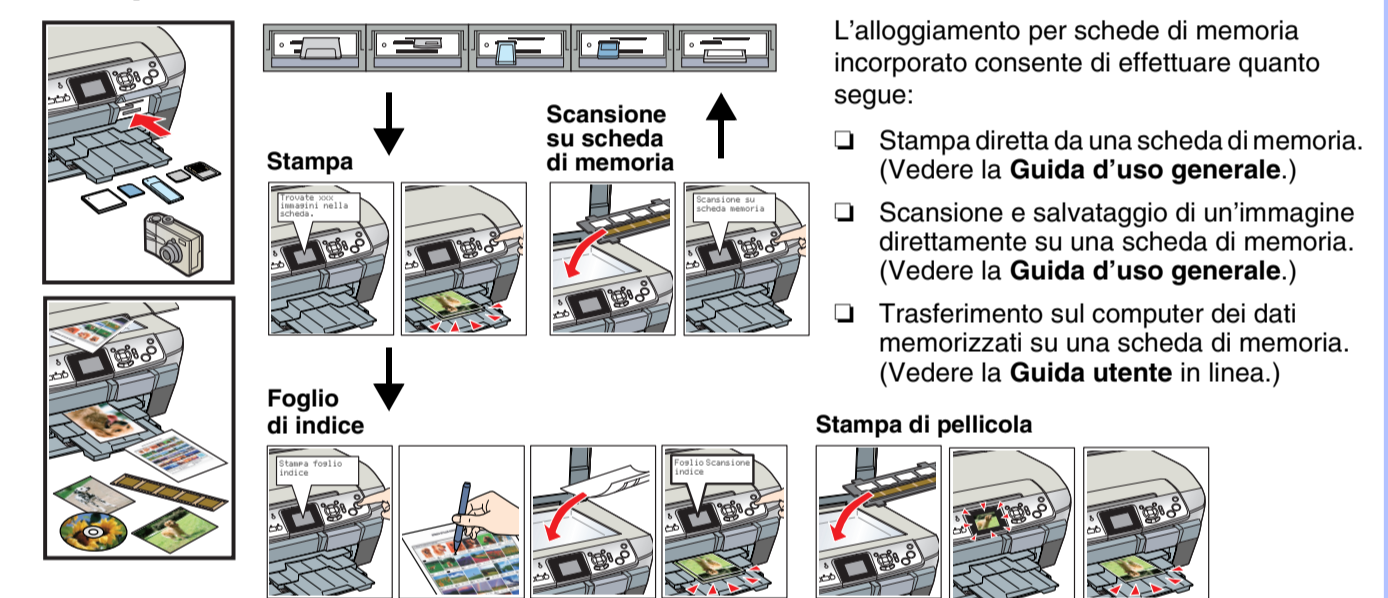


Funzioni

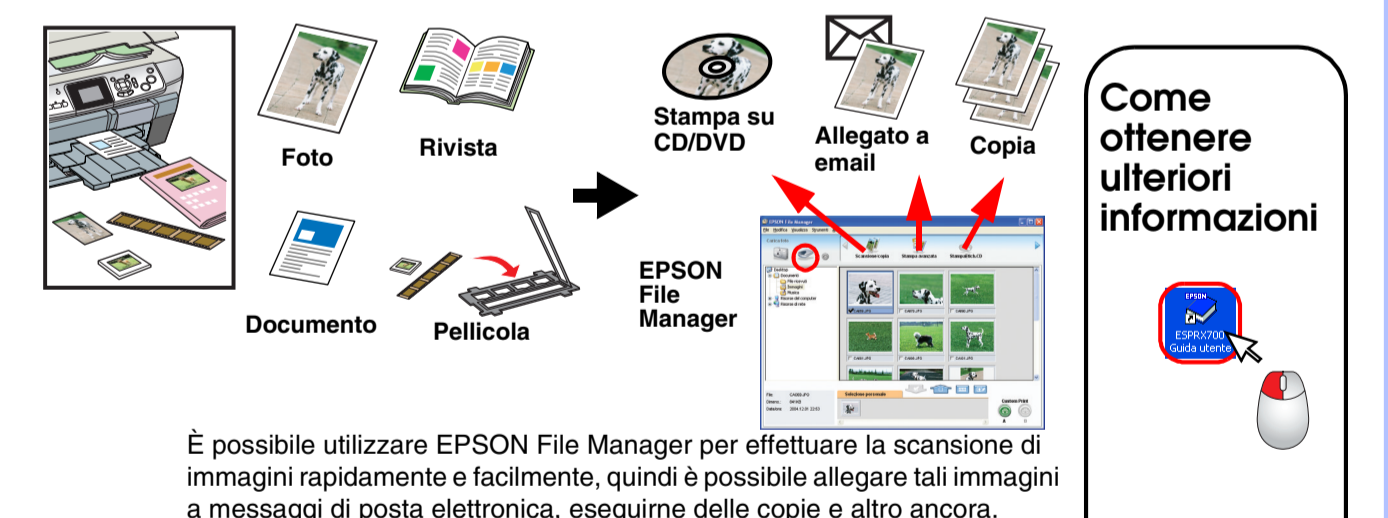
Copia



Stampa e scansione dirette



Scansione



Stampa

