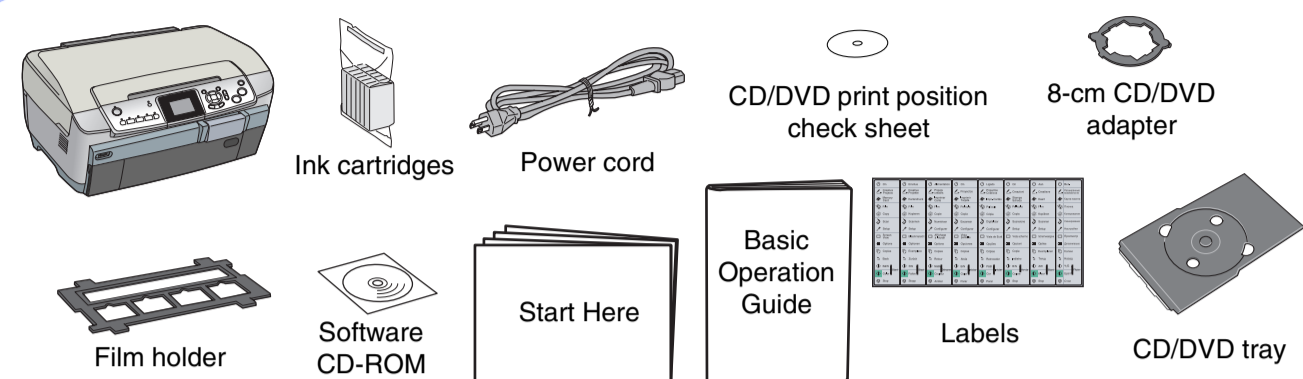
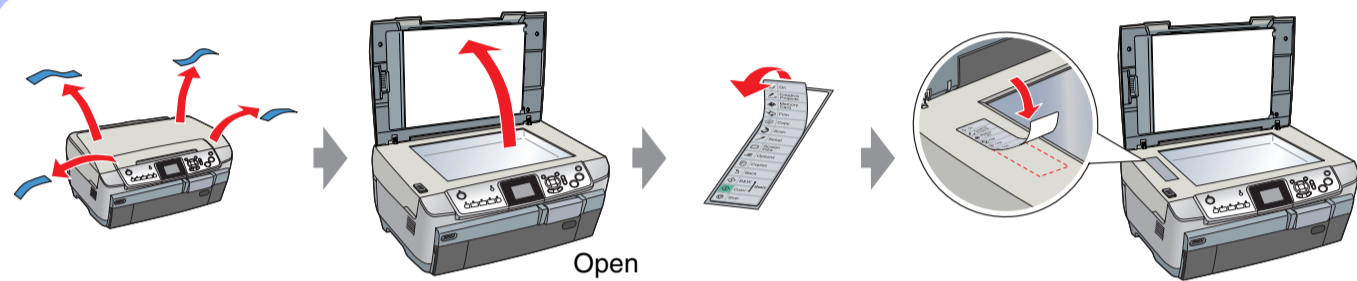


# Start Here

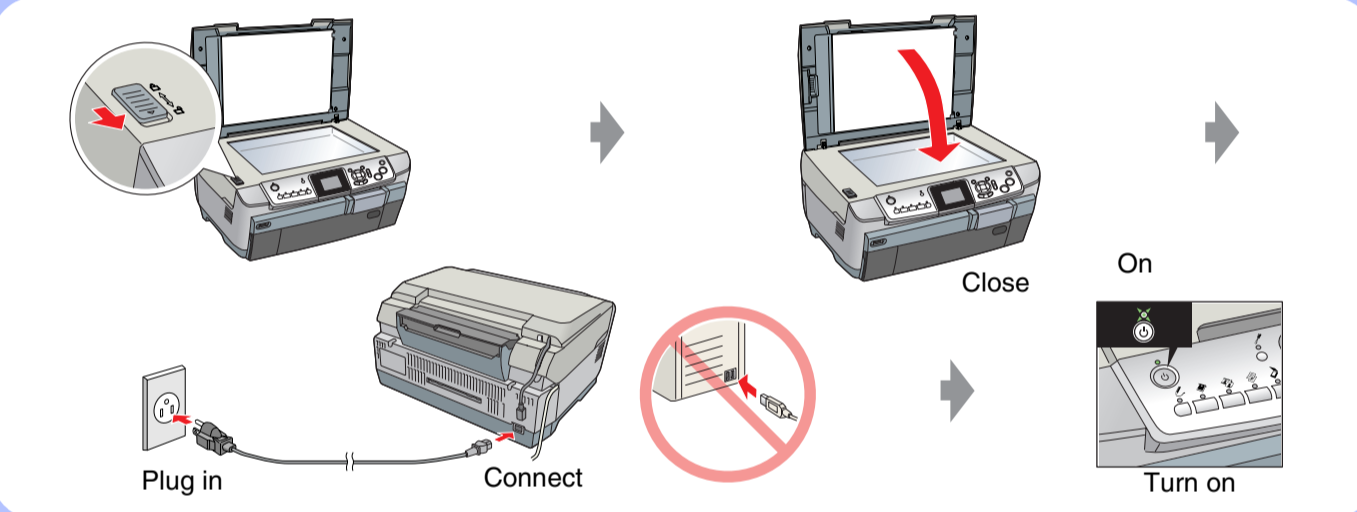
## 1. Unpacking



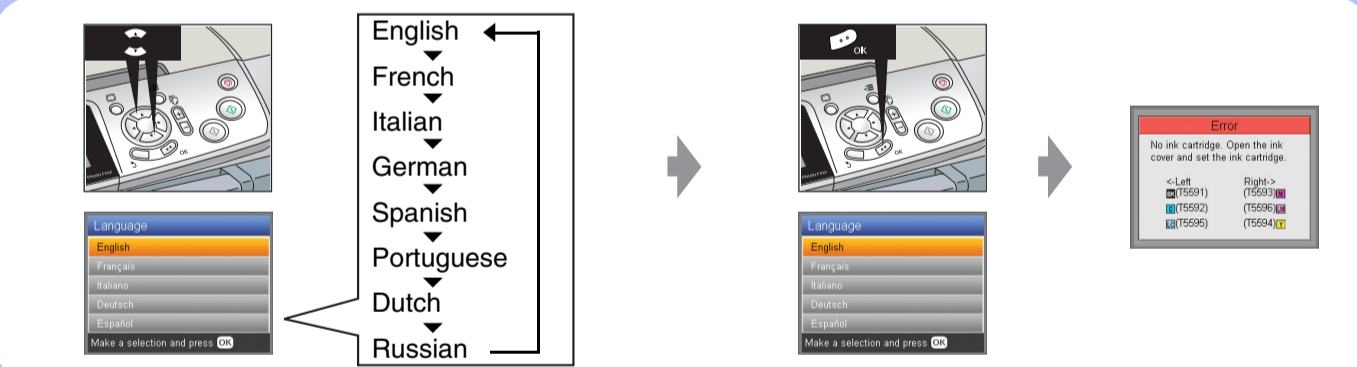
## 2. Removing All Tape and Applying the Label



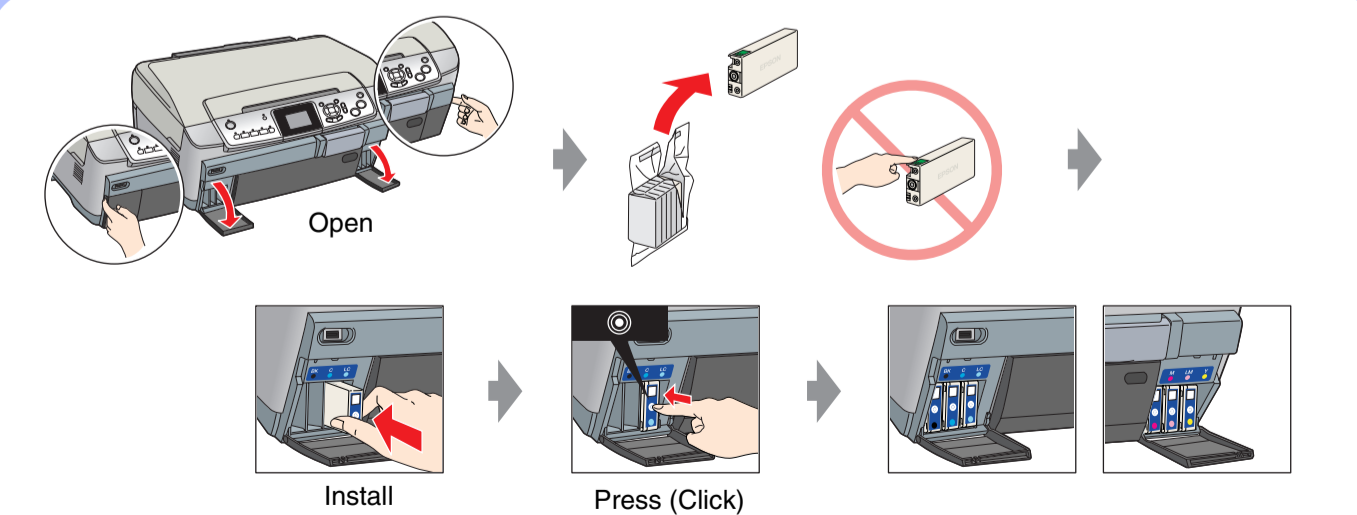
## 3. Unlocking and Turning On



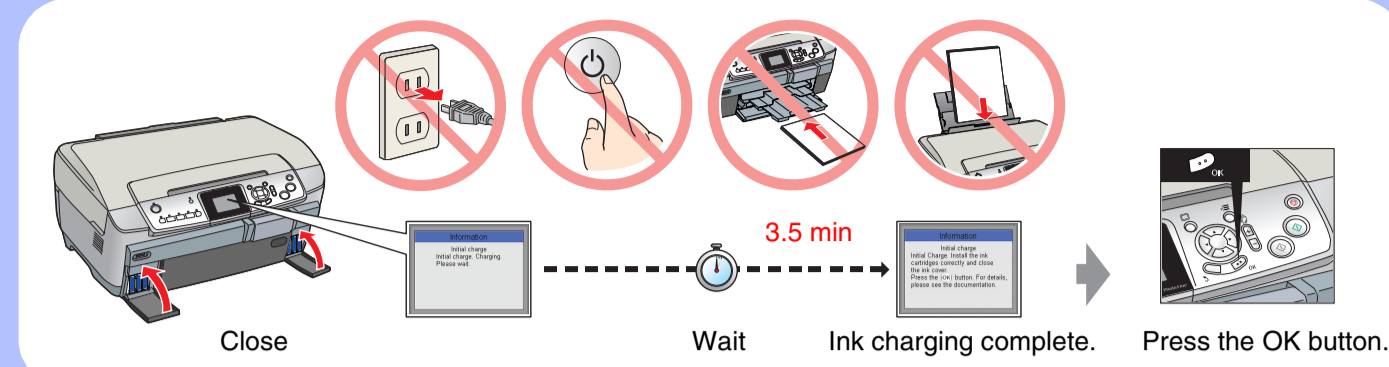
## 4. Selecting a Language



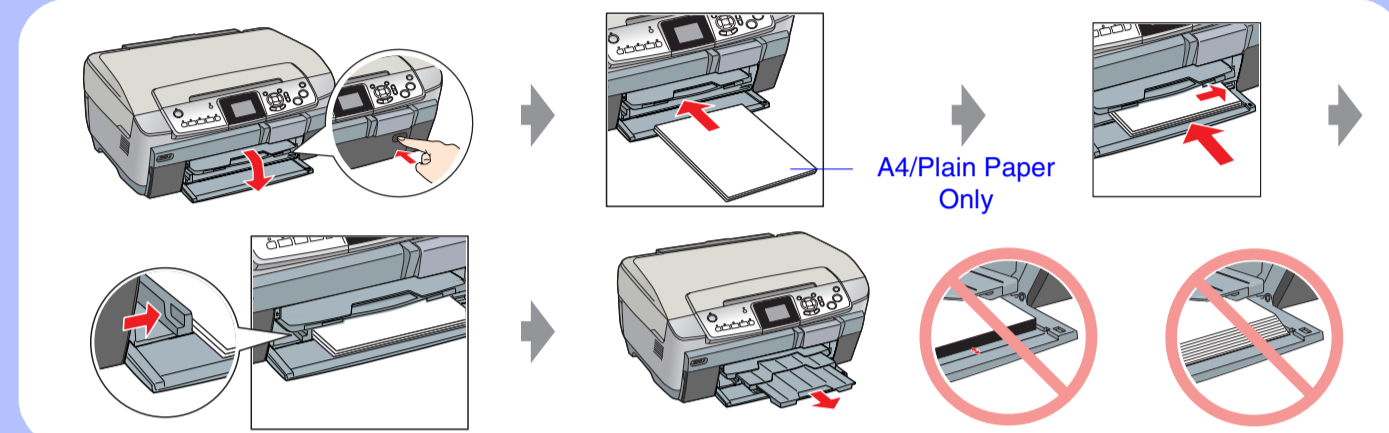
## 5. Installing Ink Cartridges



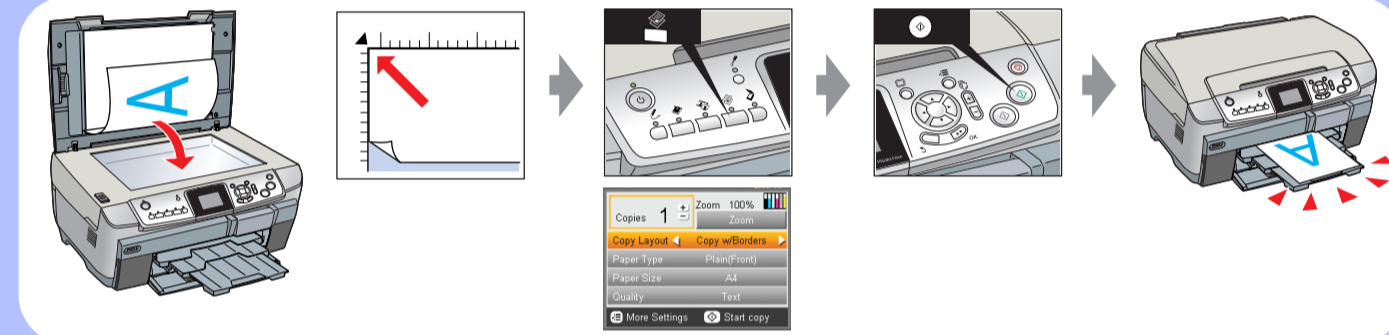
## 6. Ink Charging



## 7. Loading Paper



## 8. Making a Test Copy



## 9. Connecting to a Computer and Installing the Software

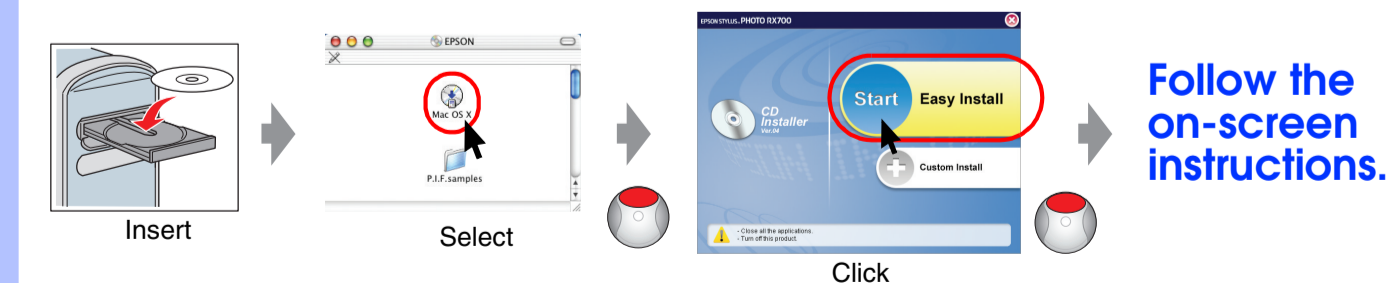


### For Windows



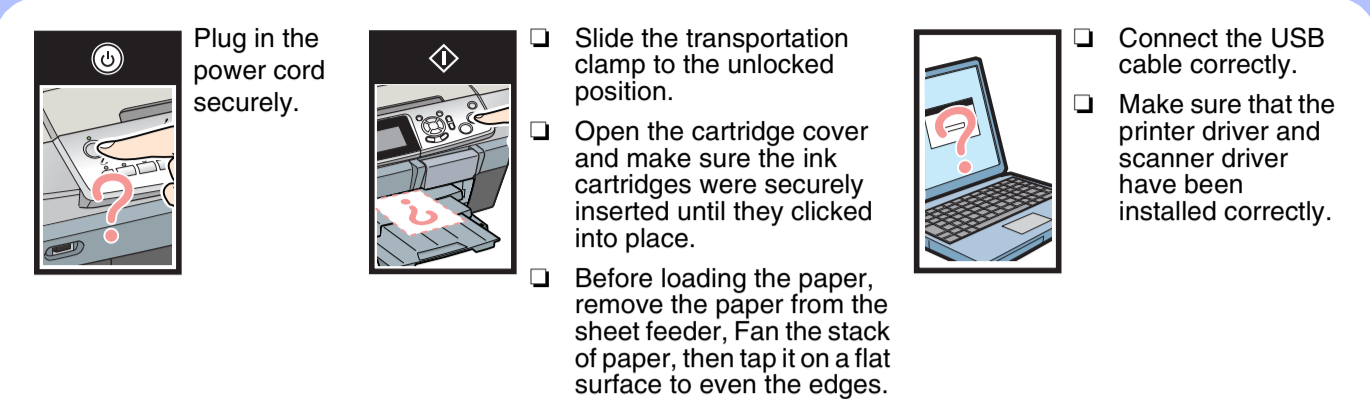
❑ If the installer dialog box does not appear, double-click the CD-ROM icon.

### For Mac OS X



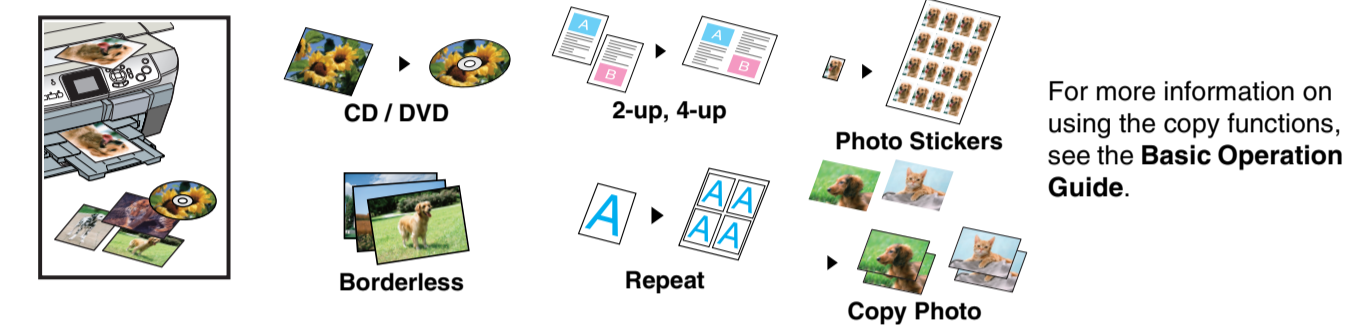
❑ For Mac OS 9 users: Access the following site to download the driver. [www.epson.com](http://www.epson.com)

## Troubleshooting

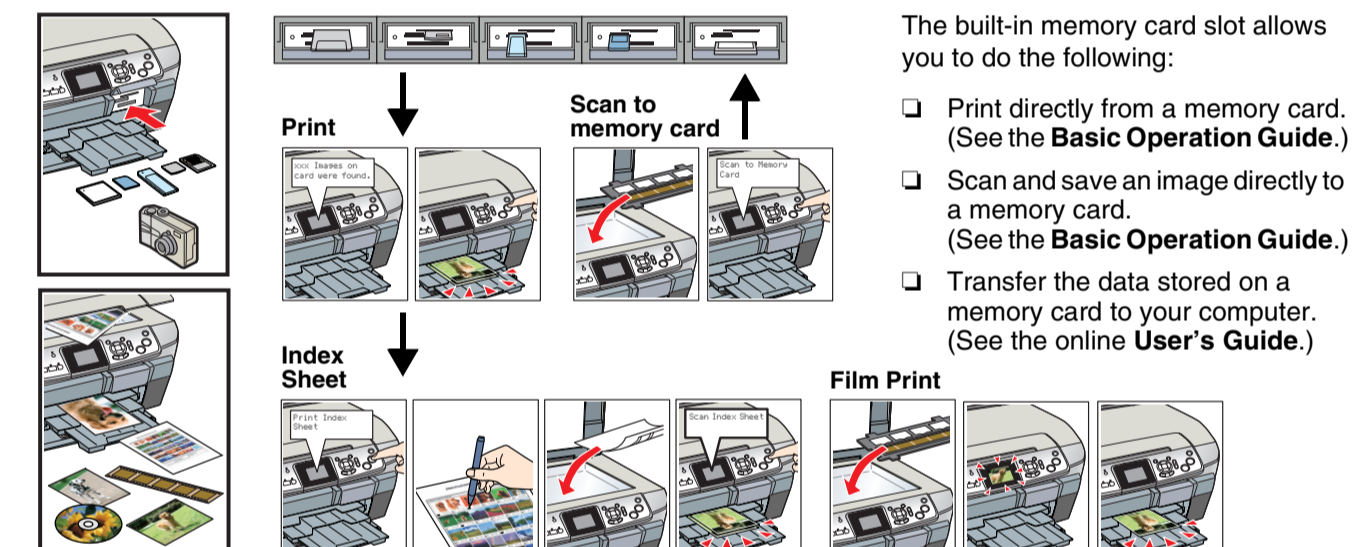


## Features

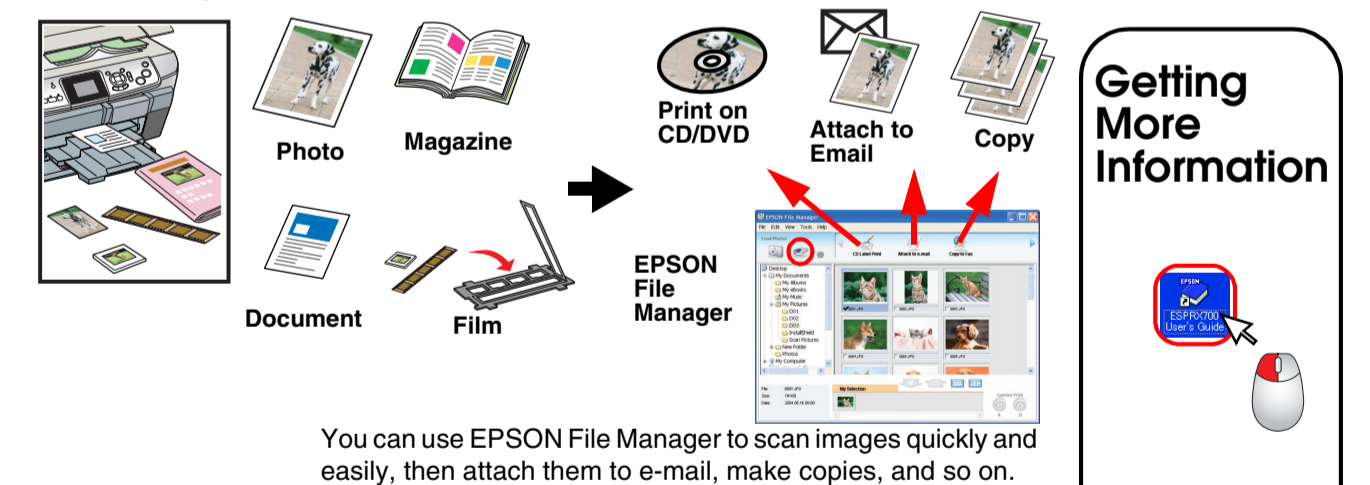
### Copying



### Direct Printing and Scanning



### Scanning



You can use EPSON File Manager to scan images quickly and easily, then attach them to e-mail, make copies, and so on.

### Printing

