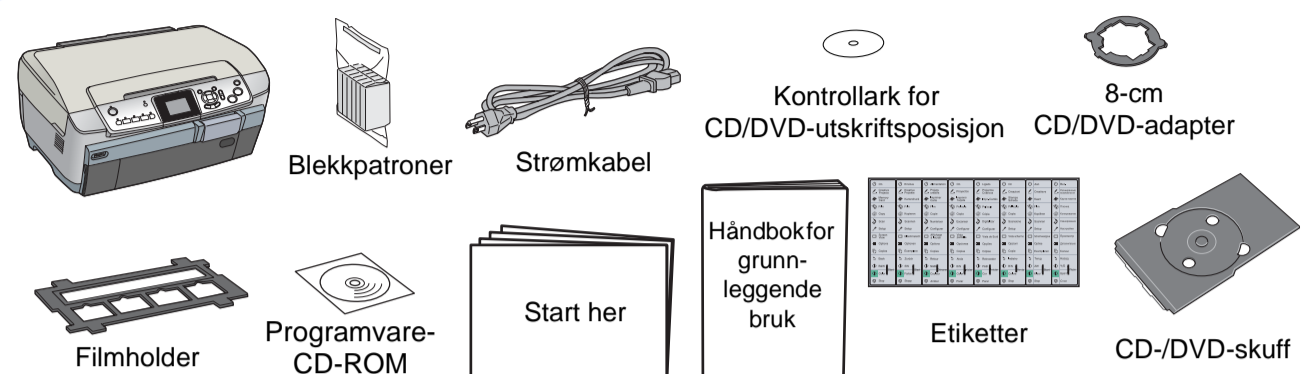
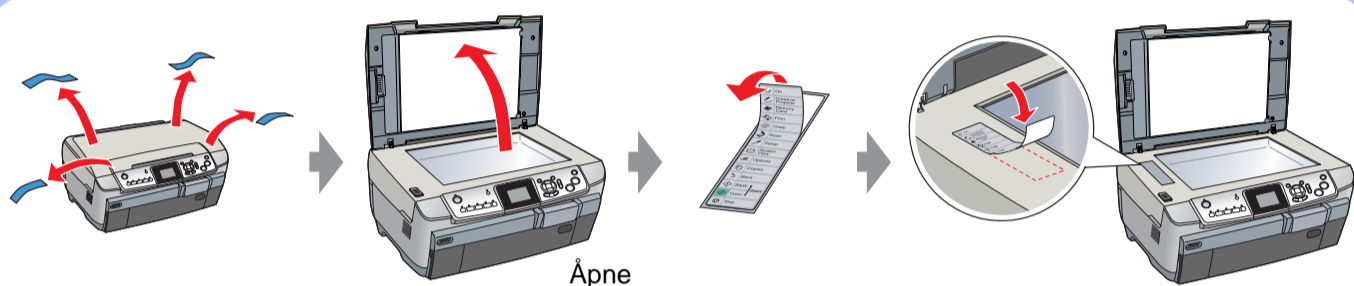


# Start Her

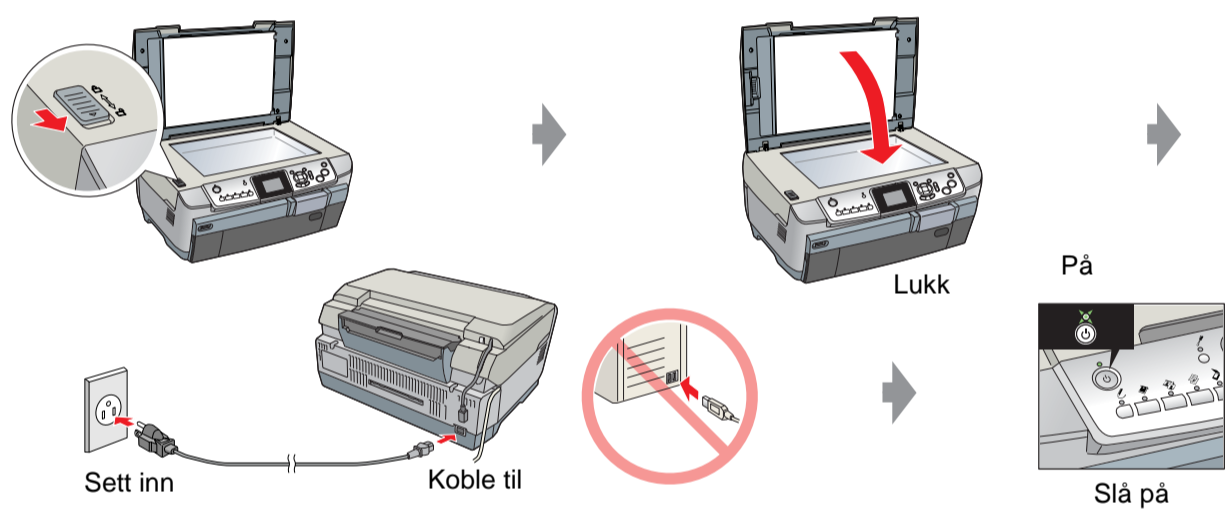
## 1. Pakke ut



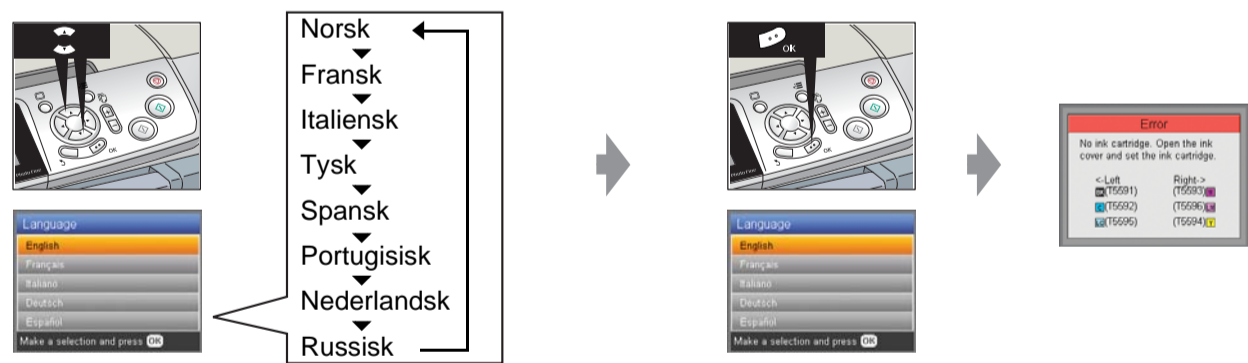
## 2. Fjerne all tape, og feste etiketten



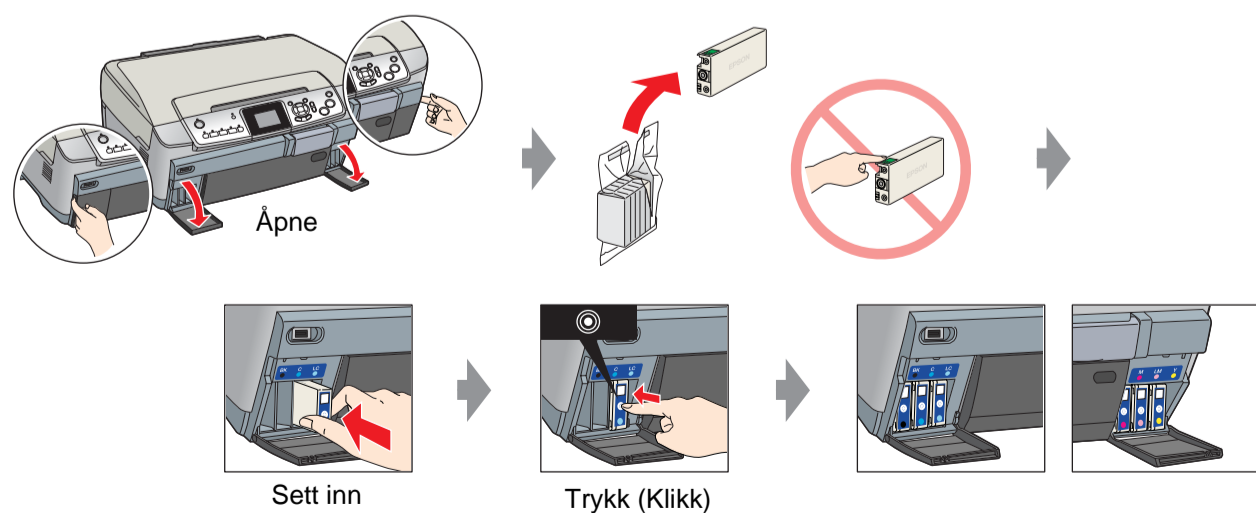
## 3. Låse opp, og slå på



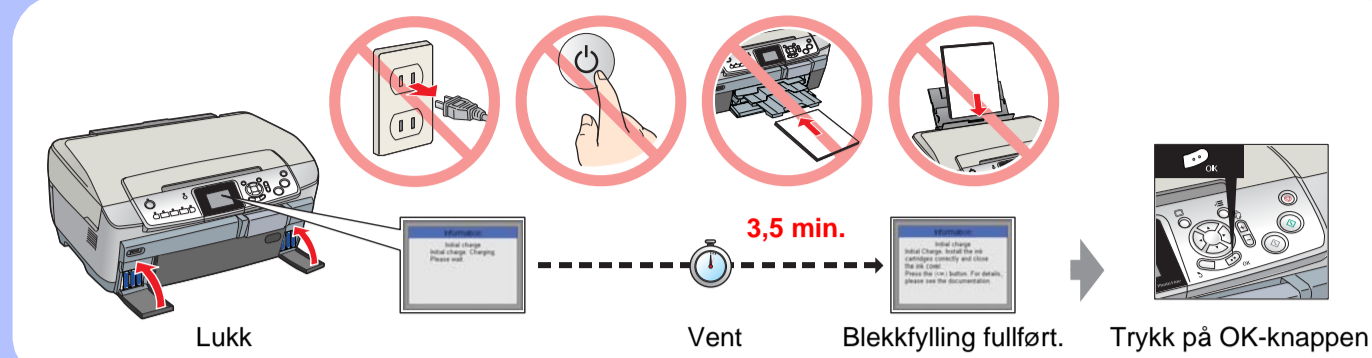
## 4. Velge språk



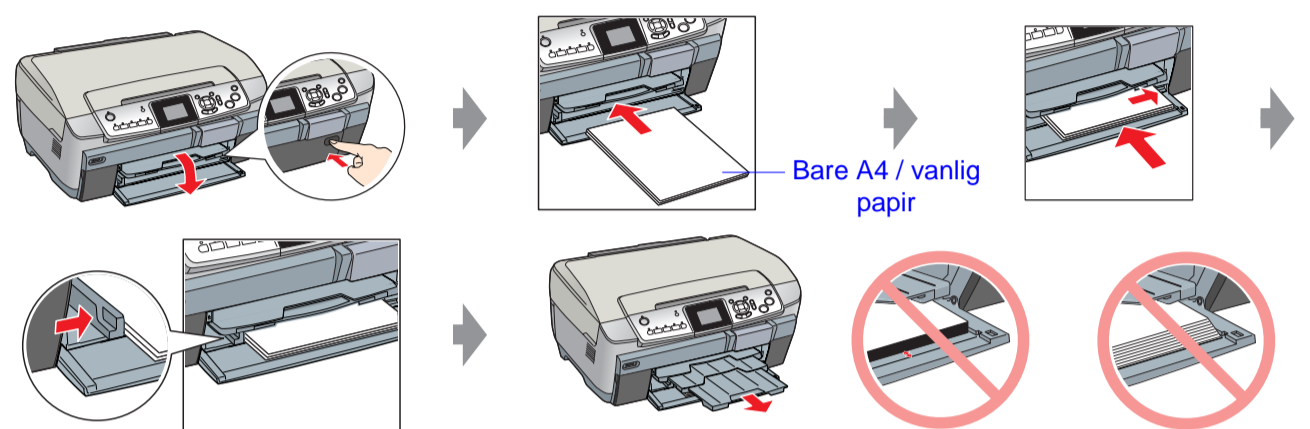
## 5. Sette inn blekkpatroner



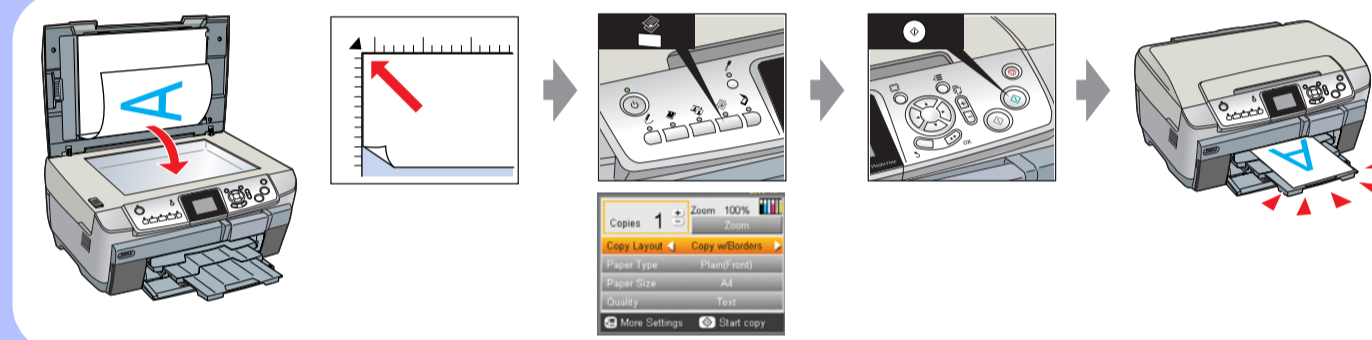
## 6. Blekkfylling



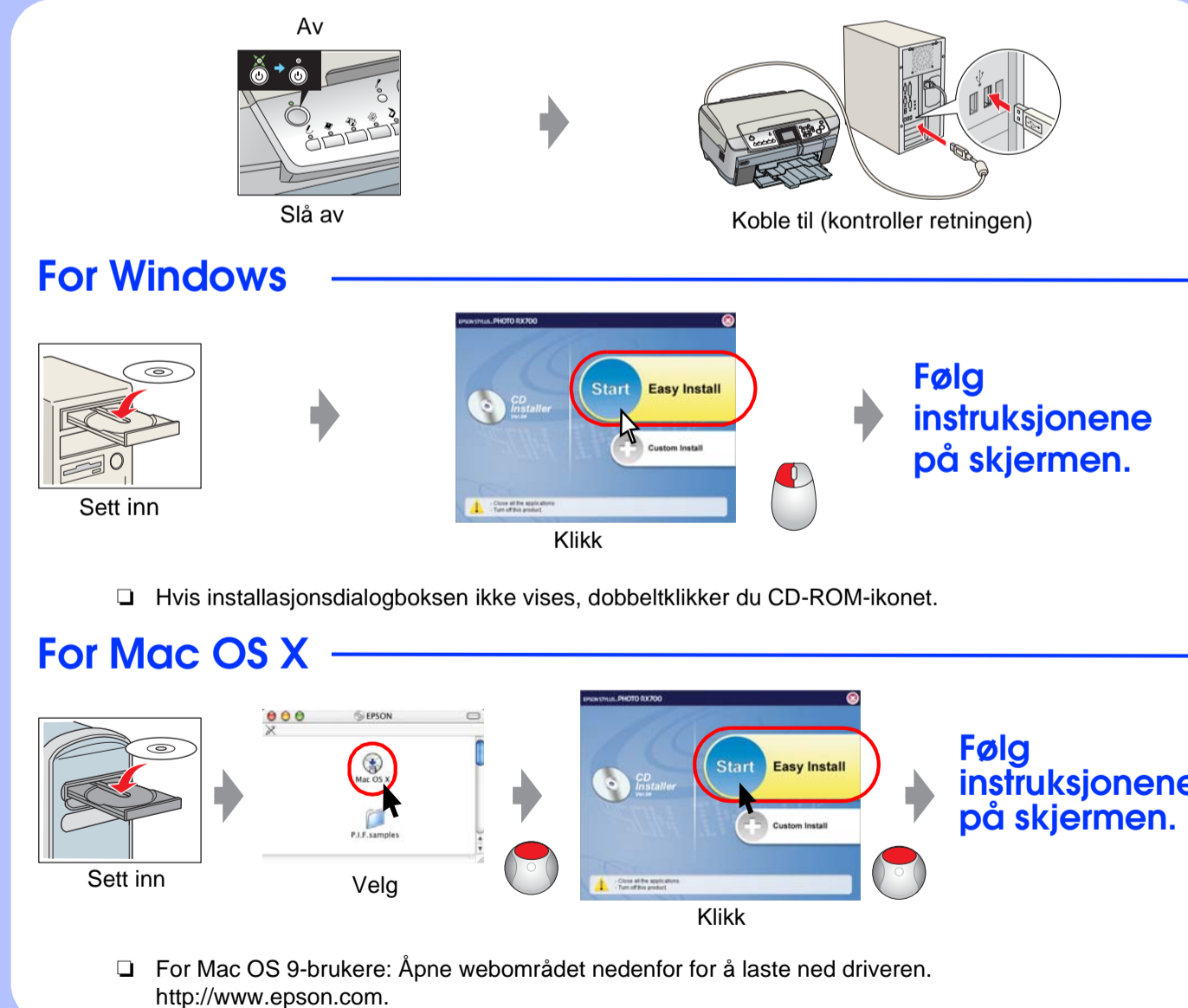
## 7. Legge inn papir



## 8. Lage en testkopi



## 9. Koble til en datamaskin og installere programvaren



## Feilsøking

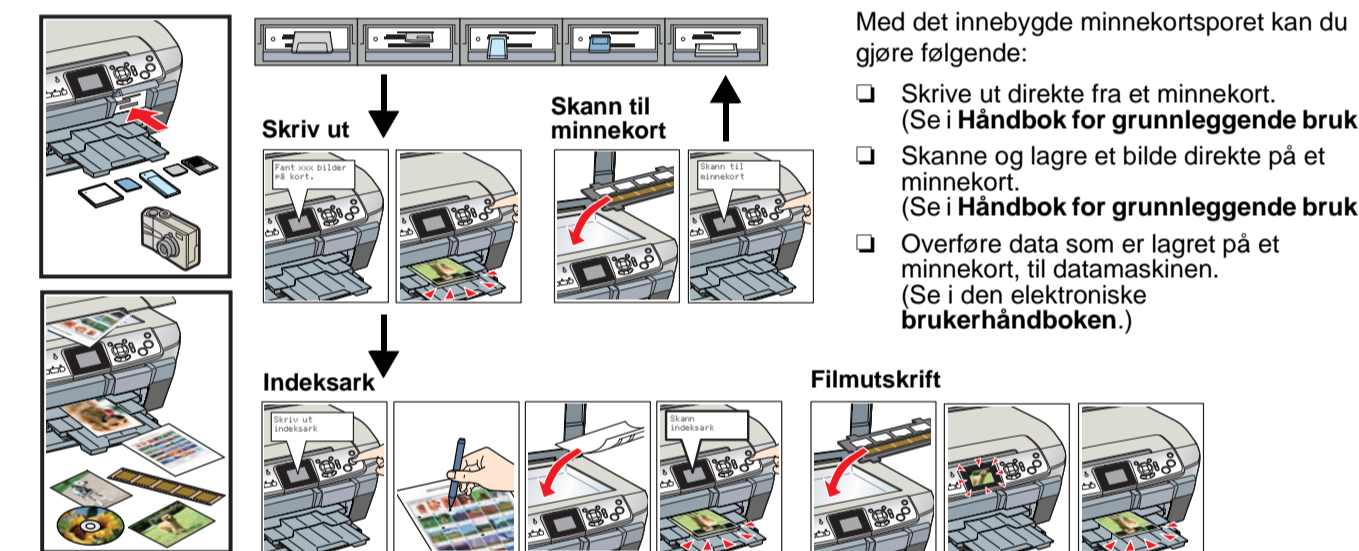


## Funksjoner

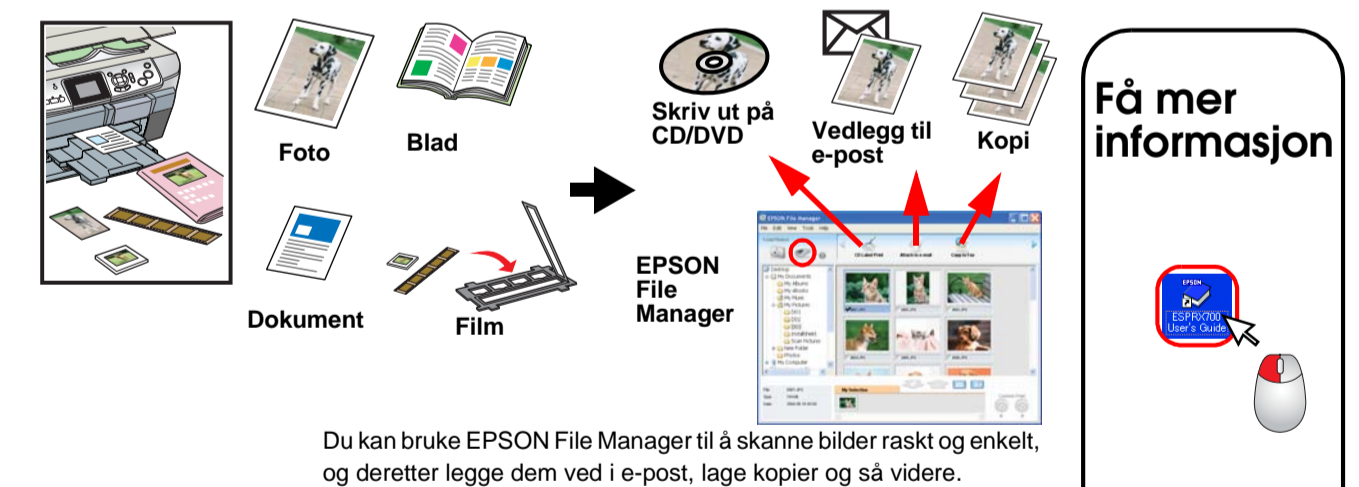
### Kopiere



### Direkte utskrift og skanning



### Skanne



### Skrive ut

