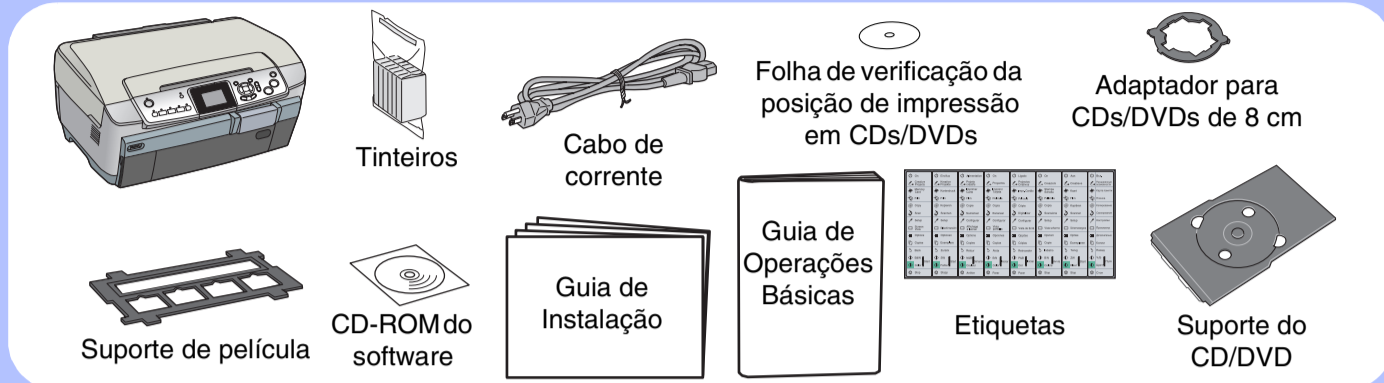


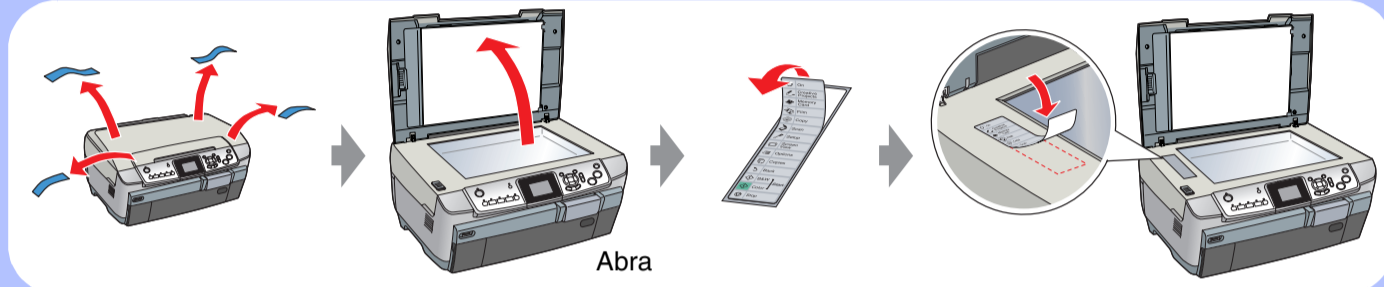
Guia de Instalação

Instrucciones en español en el reverso.

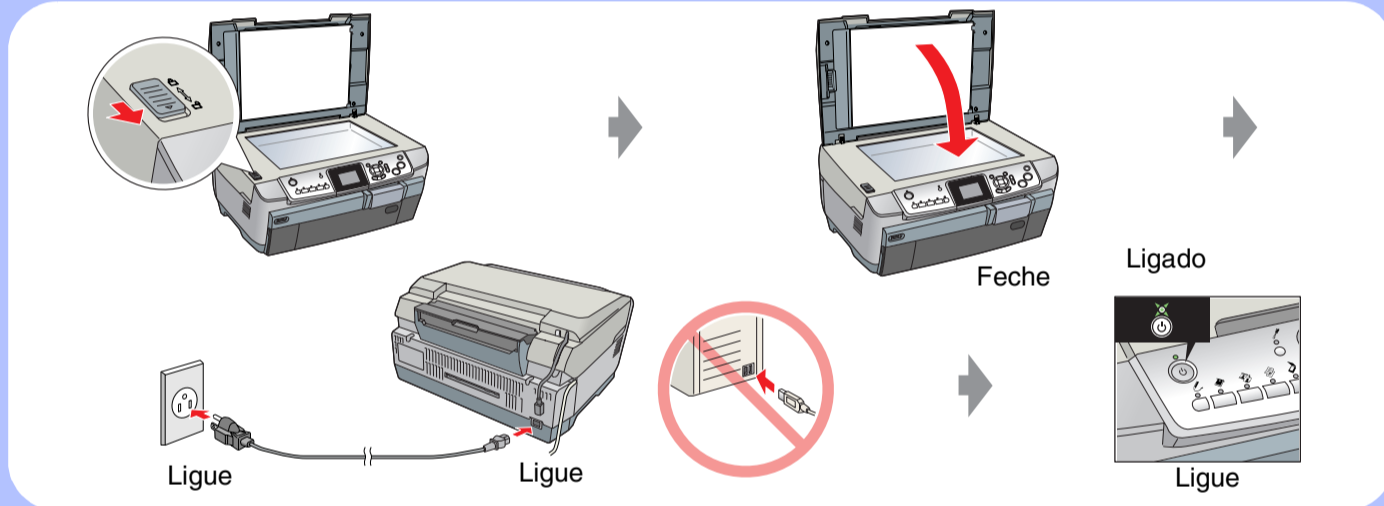
1. Desembalar



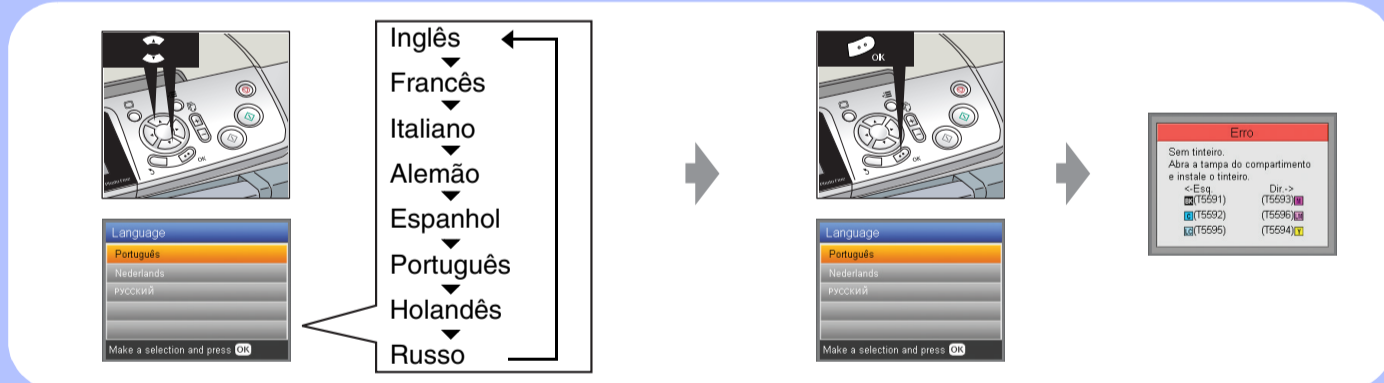
2. Retirar toda a fita e aplicar a etiqueta



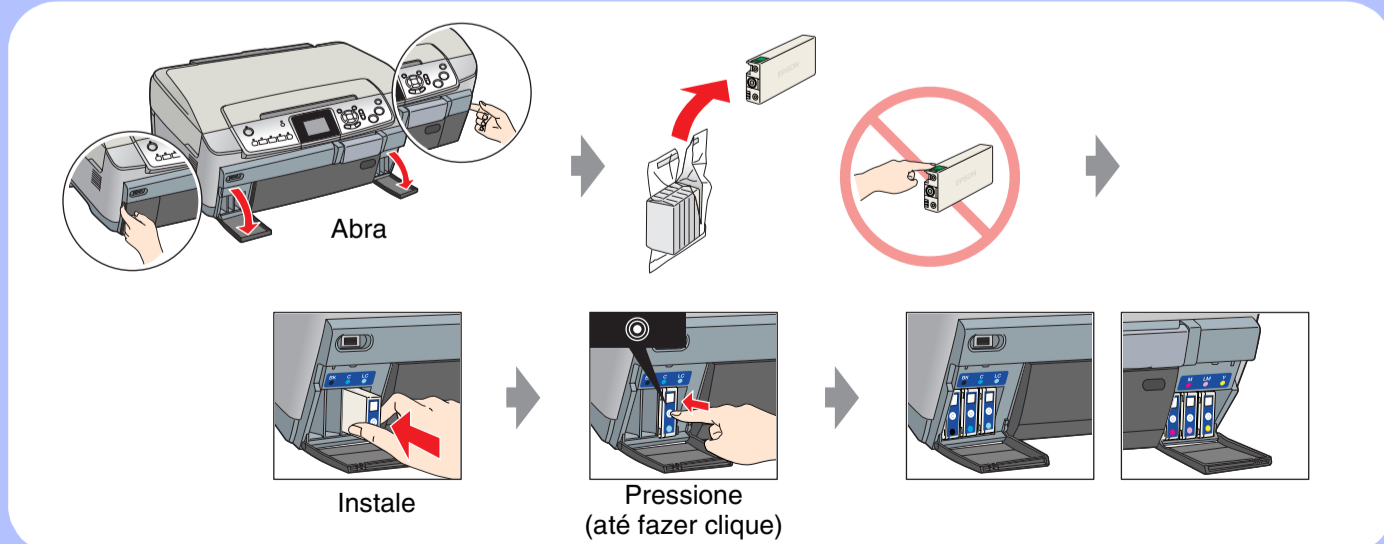
3. Desbloquear e Ligar



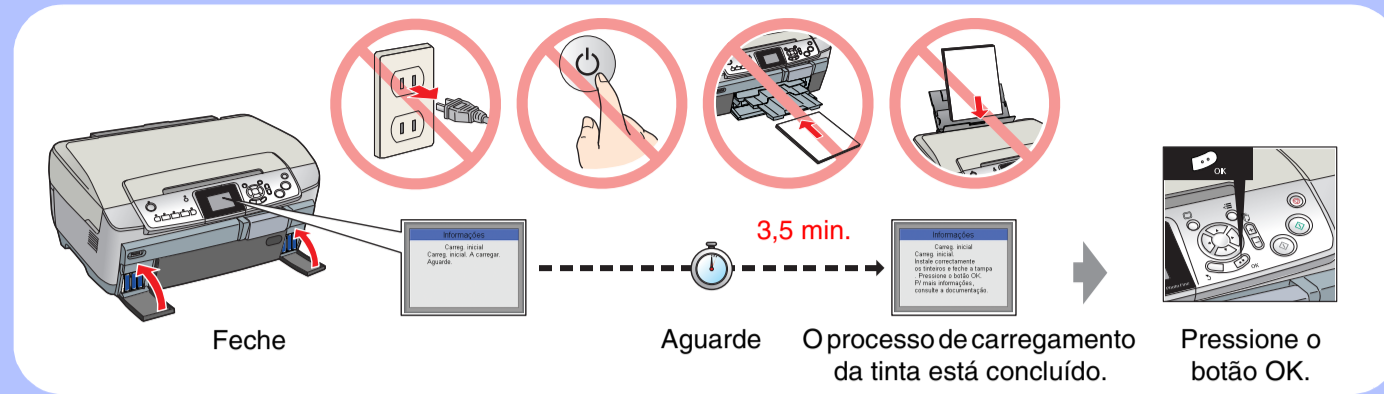
4. Seleccionar uma Língua



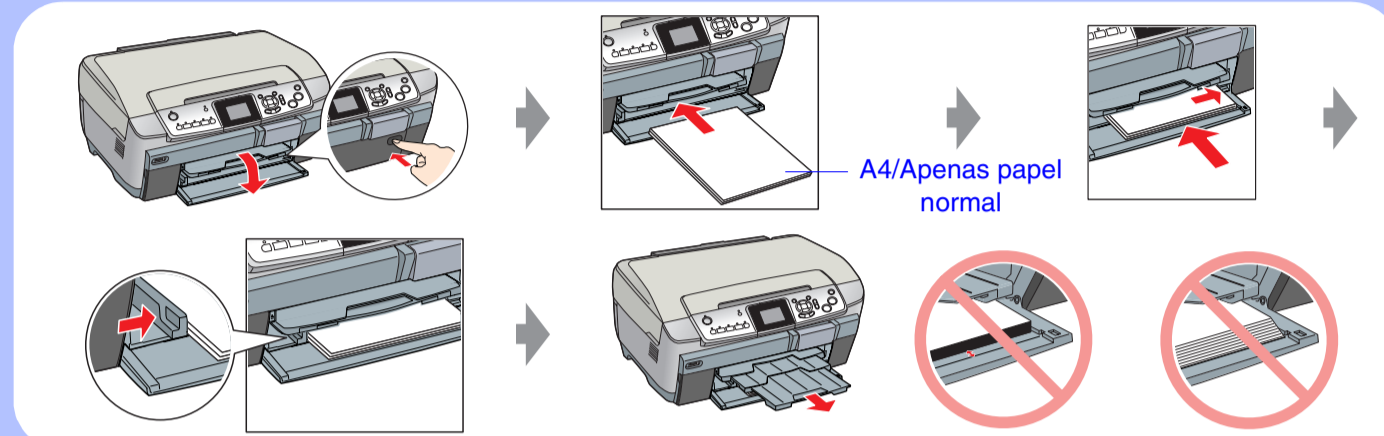
5. Instalar os Tinteiros



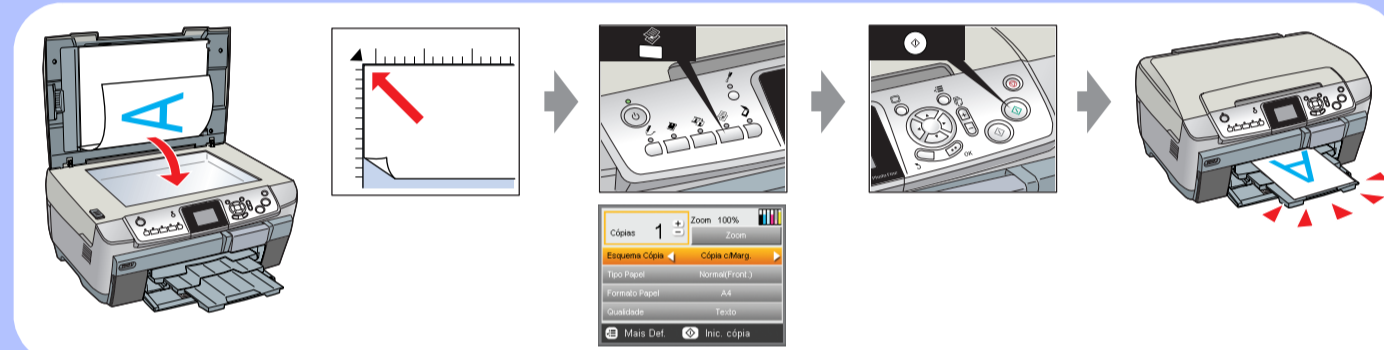
6. Carregamento da tinta



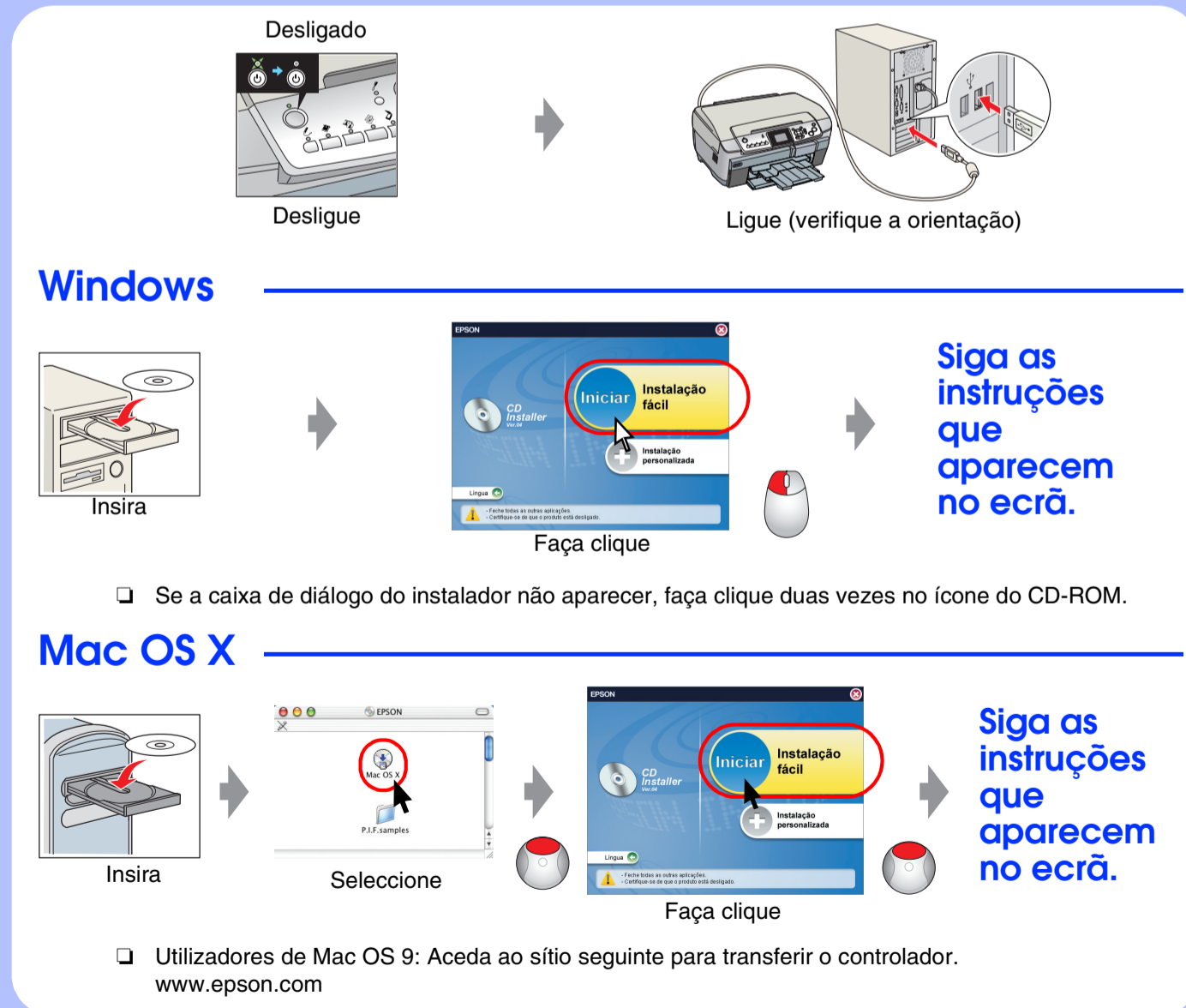
7. Alimentar Papel



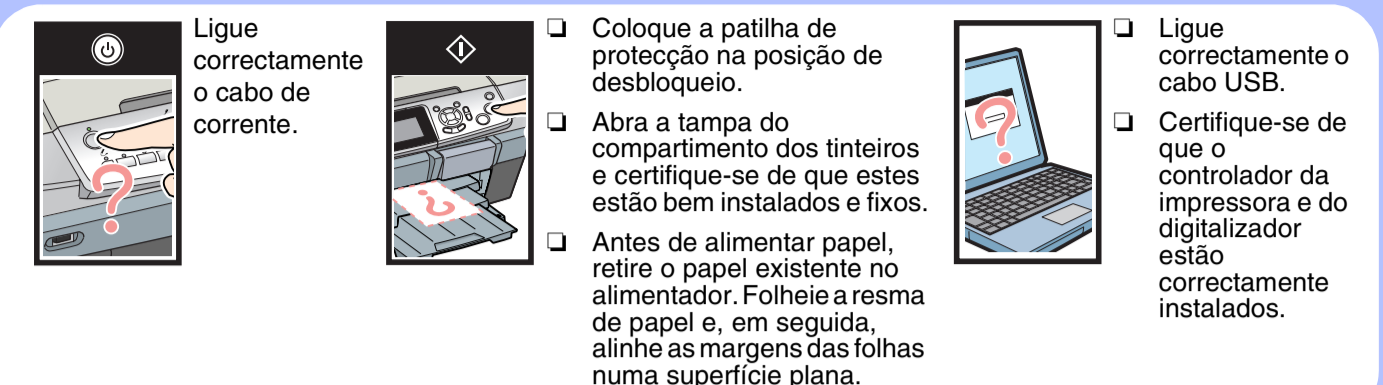
8. Efectuar uma Cópia de Teste



9. Efectuar a Ligação a um Computador e Instalar o Software

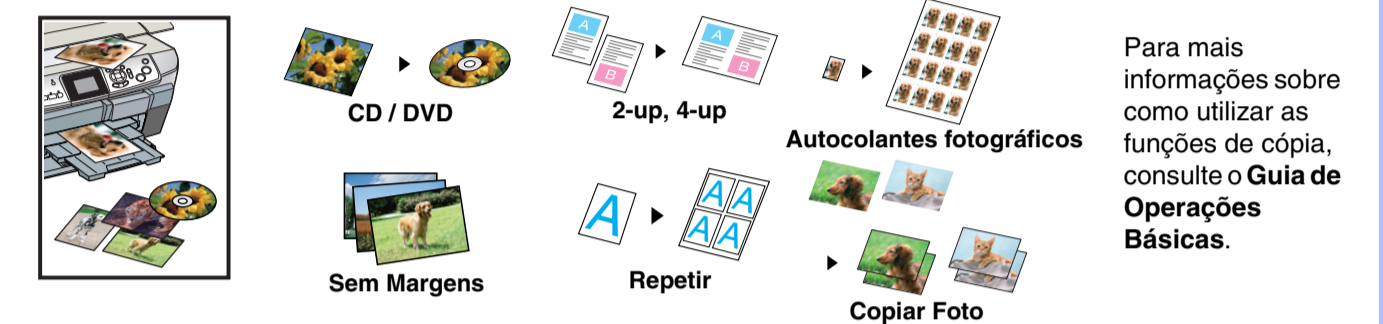


Resolução de Problemas

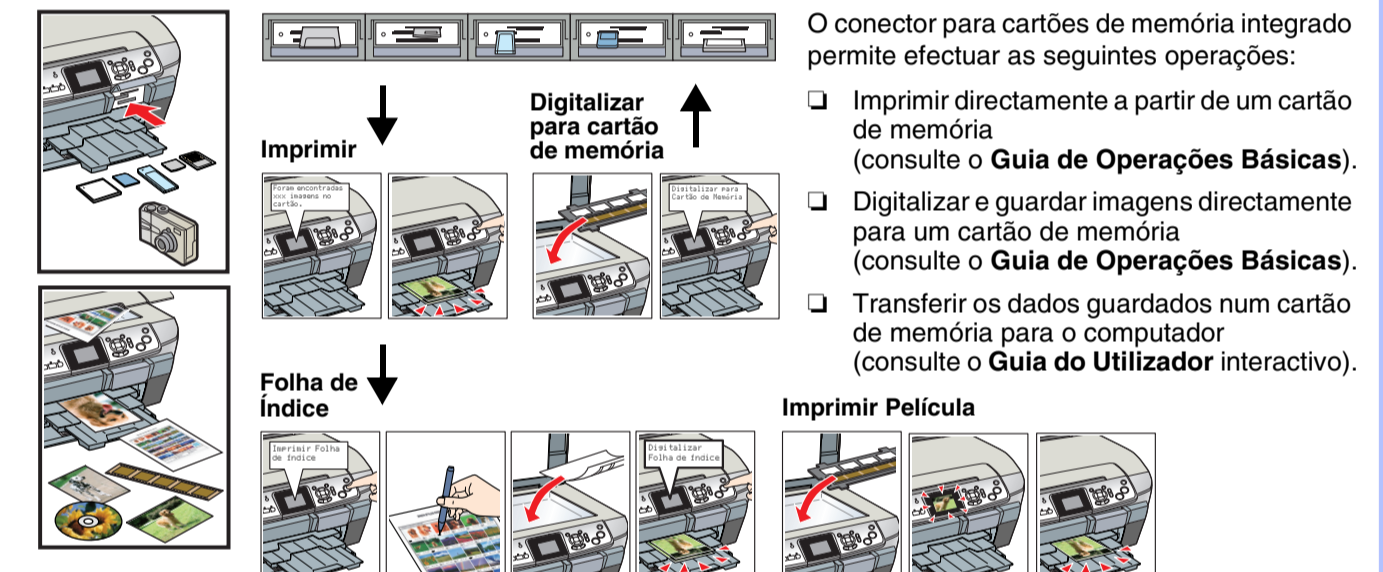


Funções

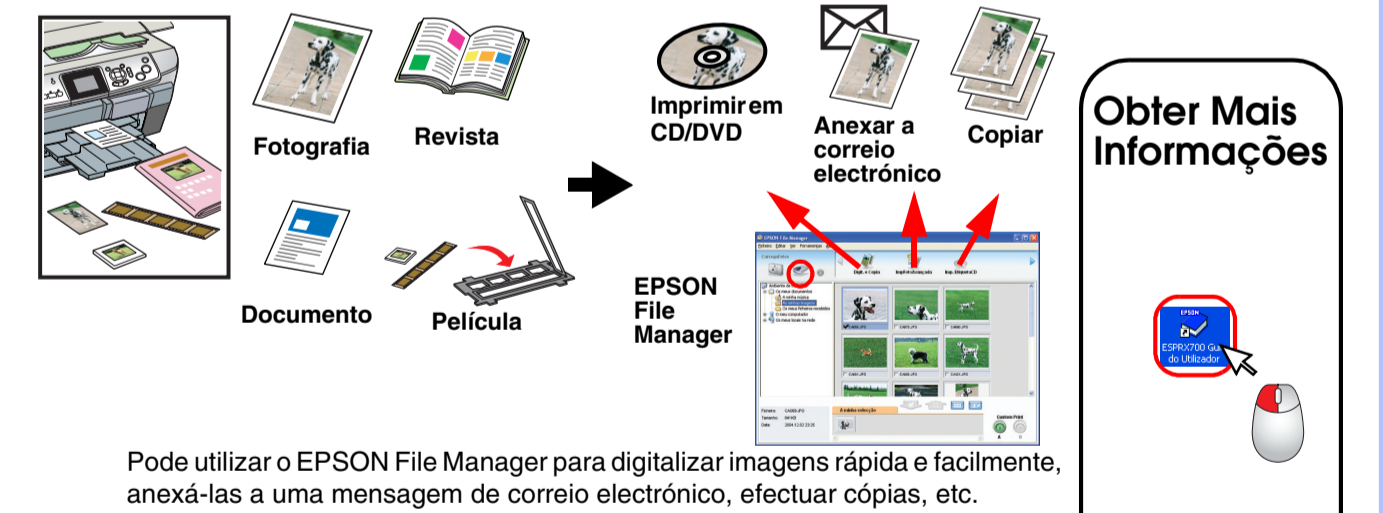
Efectuar cópias



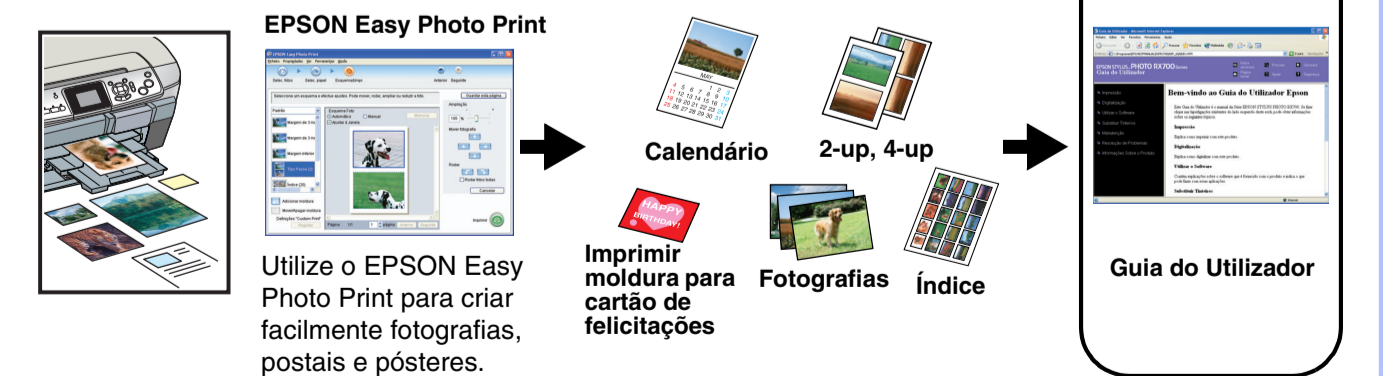
Digitalização e impressão directas



Digitalizar



Imprimir



Obter Mais Informações

