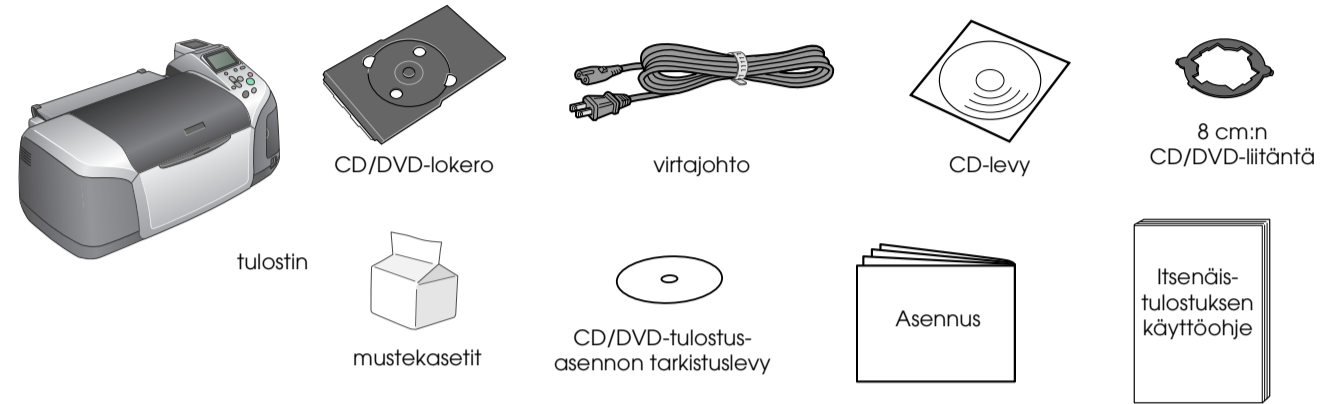


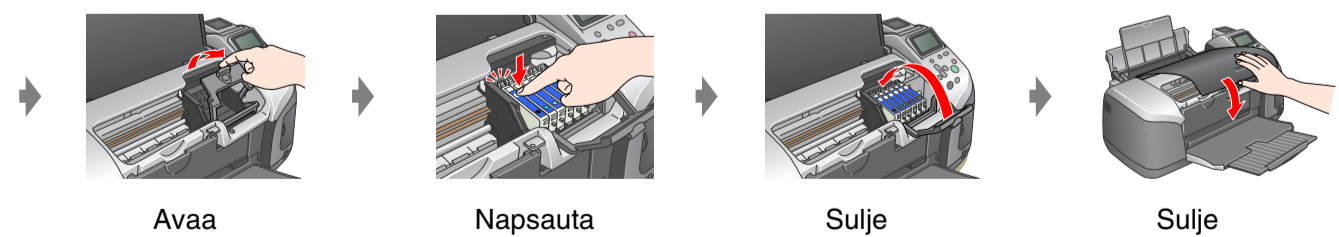
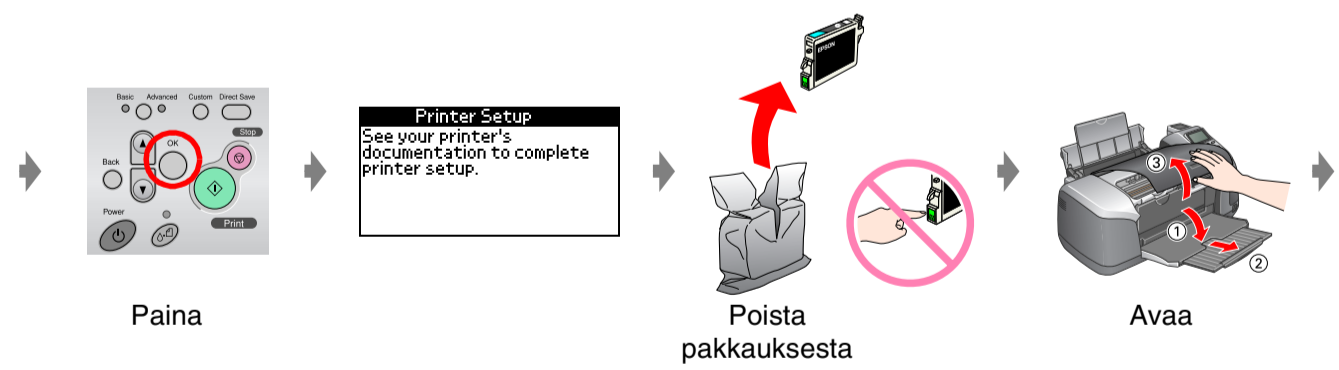
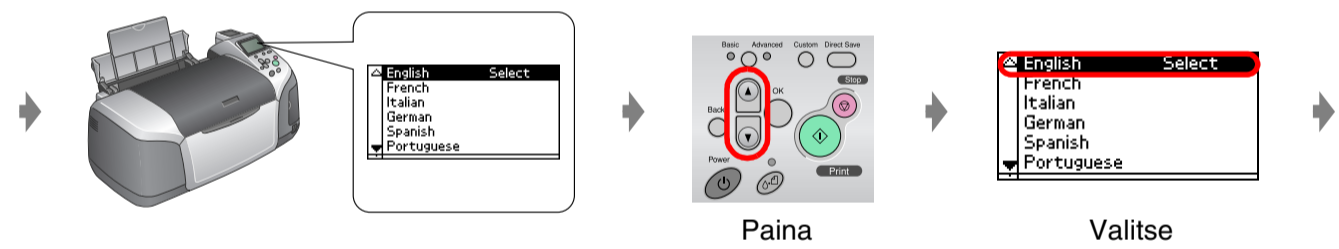
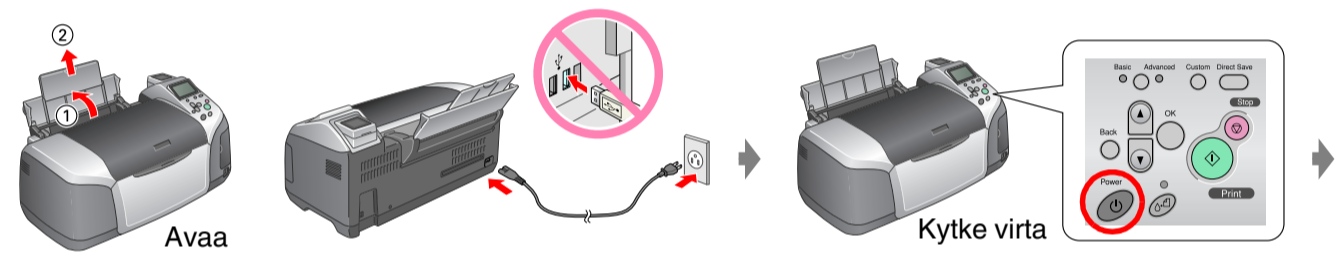
EPSON STYLUS™ PHOTO R320 Series

Asennus

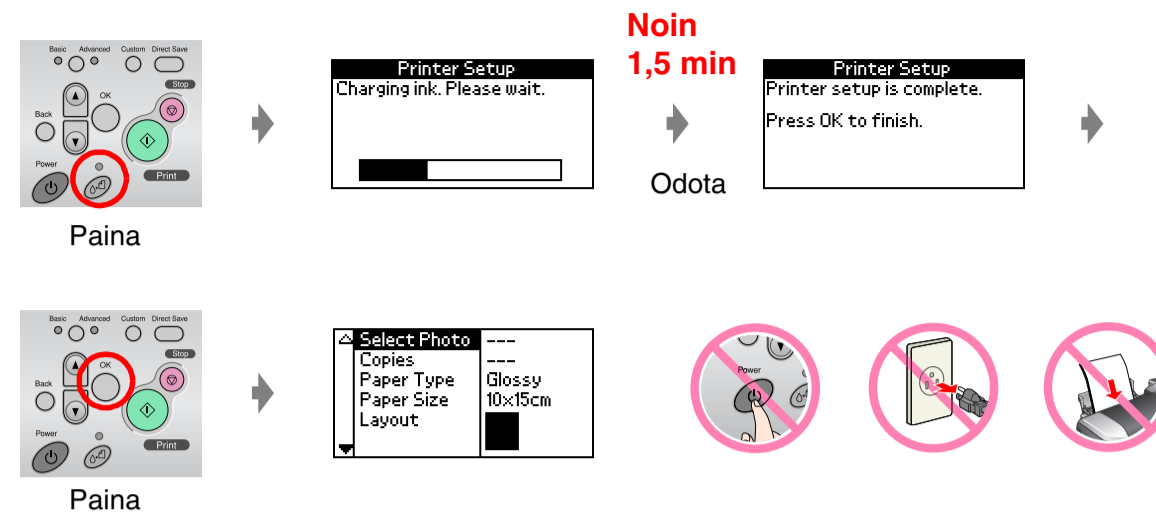
1. Tulostimen purkaminen pakkauksesta



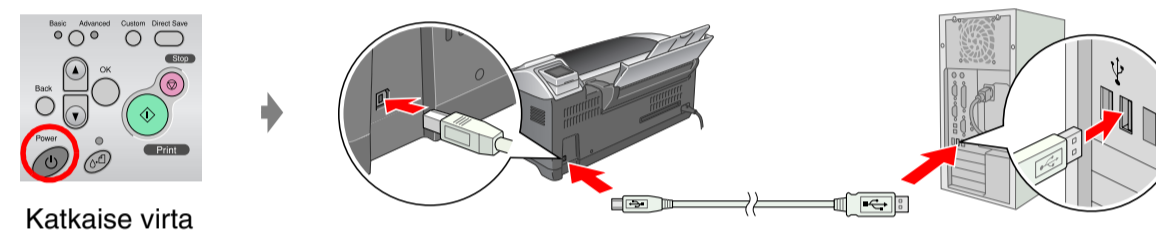
2. Kytkeminen pistorasiaan ja mustekasettien asentaminen



3. Musteen lataaminen

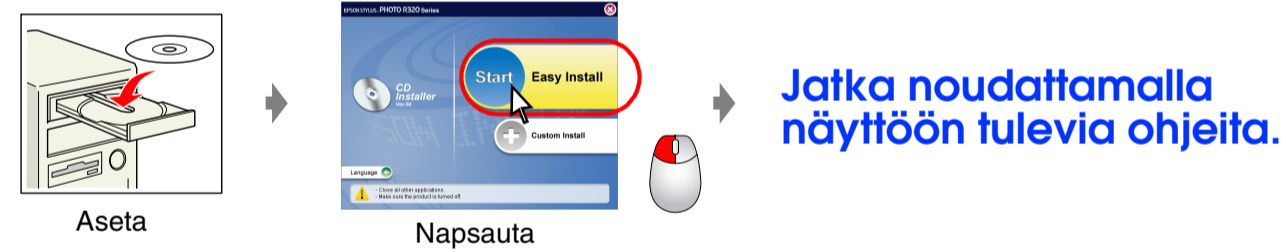


4. Kytkeminen tietokoneeseen



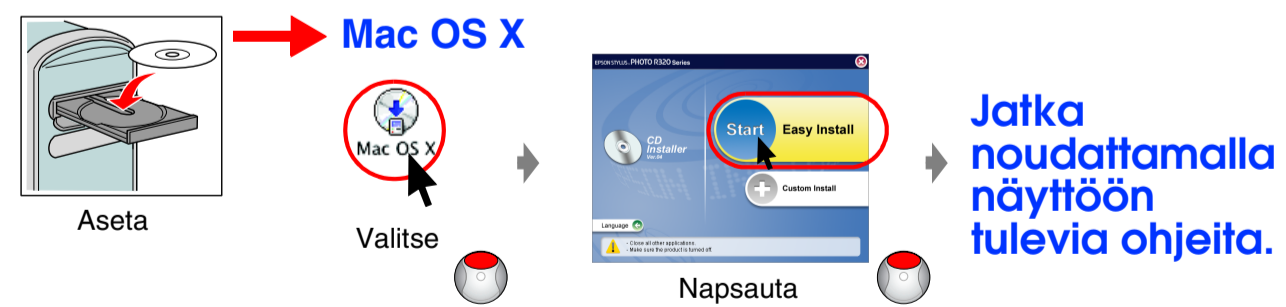
5. Ohjelmiston asentaminen

Windows



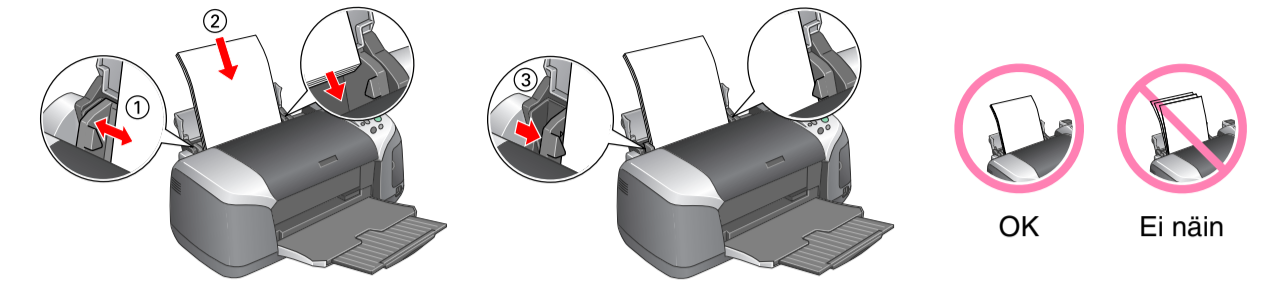
☐ Jos asennusohjelman valintaikkuna ei tule näyttöön, kaksoinapsauta CD-ROM-kuvaketta.

Macintosh



☐ Mac OS 9 -ajurin voit ladata seuraavalta sivustolta:
<http://www.epson.com>

6. Paperin lataaminen



7. Lisätietojen saaminen

