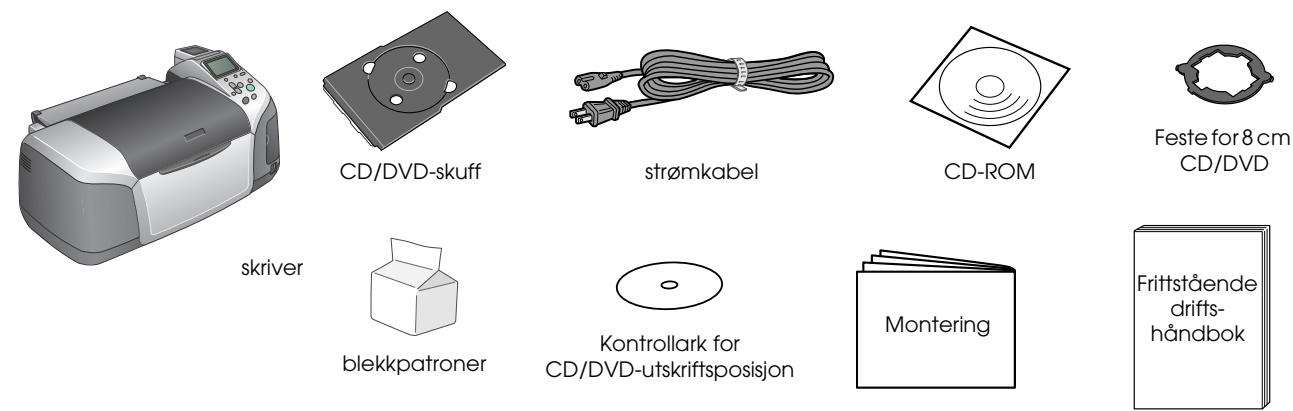
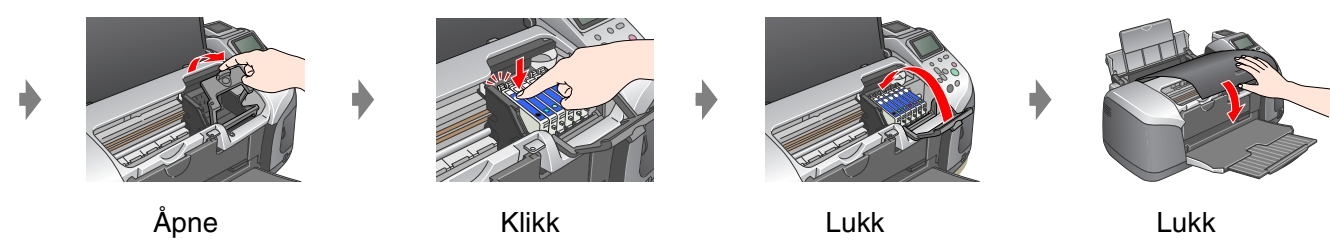
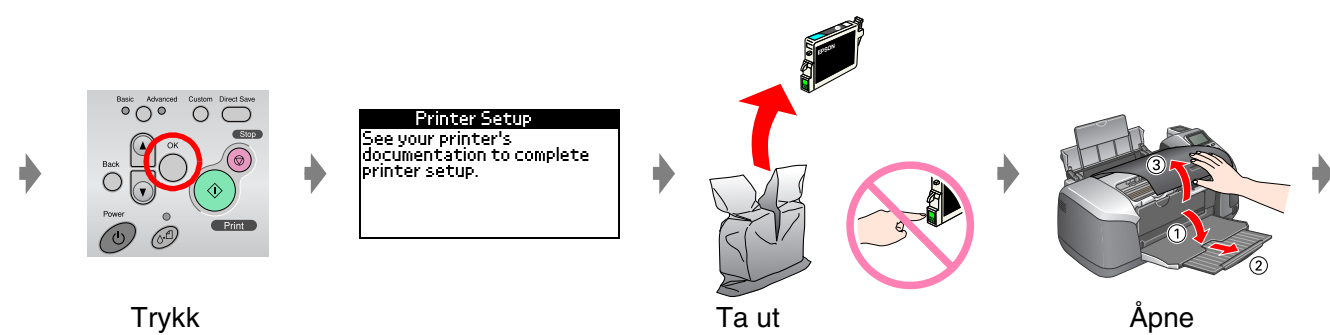
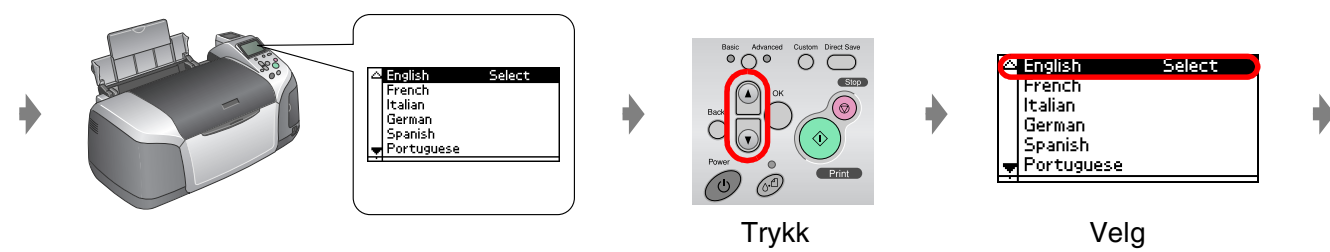
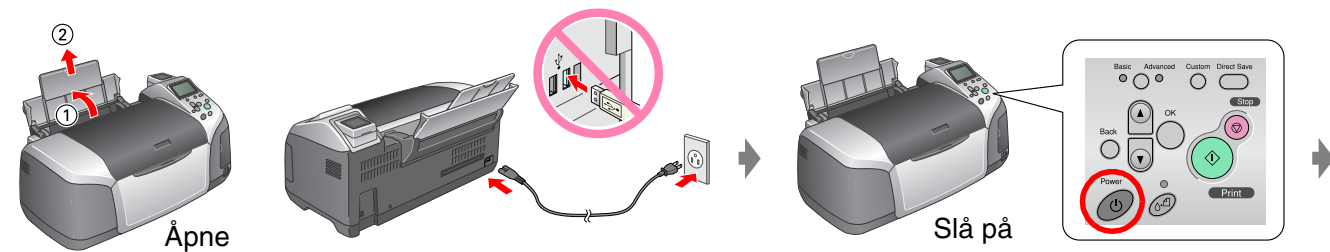


EPSON STYLUS™ PHOTO R320 Series Montering

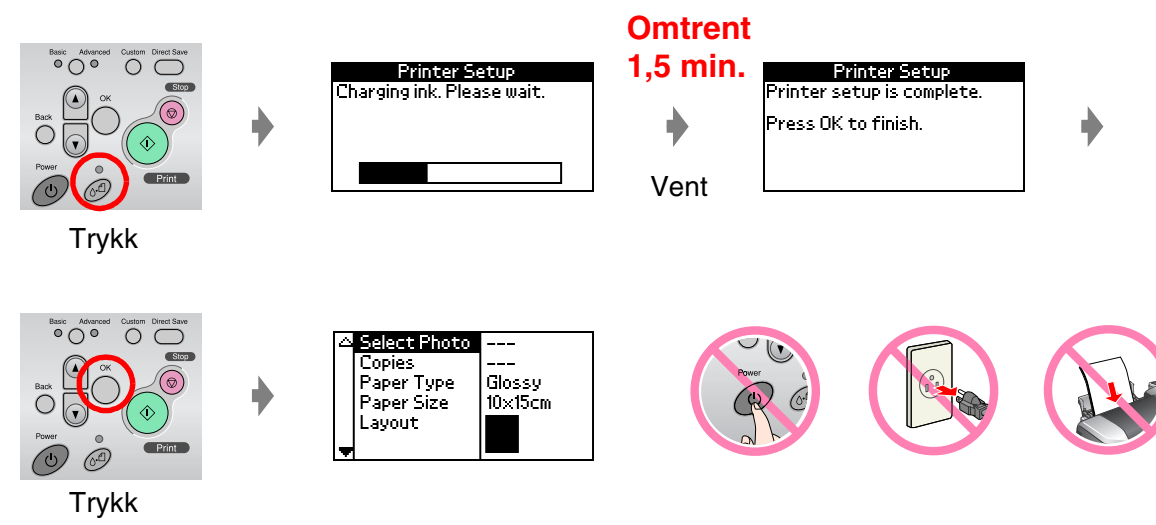
1. Utpakking



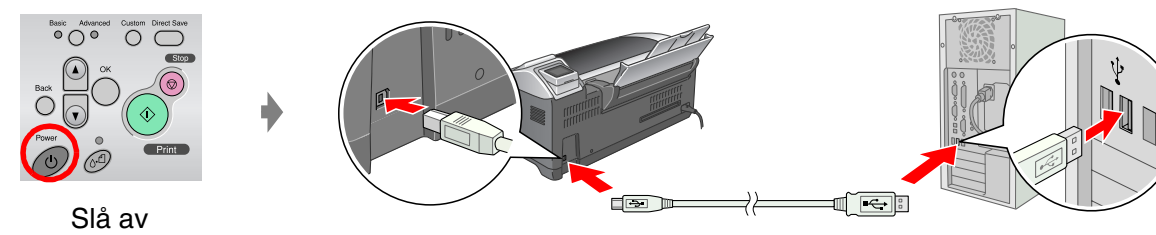
2. Koble til skriveren og sette inn blekkpatronene



3. Blekkfylling



4. Koble til en datamaskin



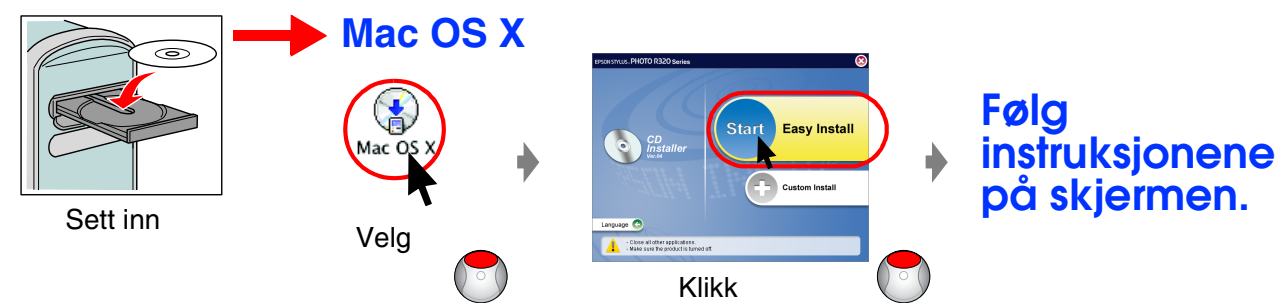
5. Installere programvaren

For Windows



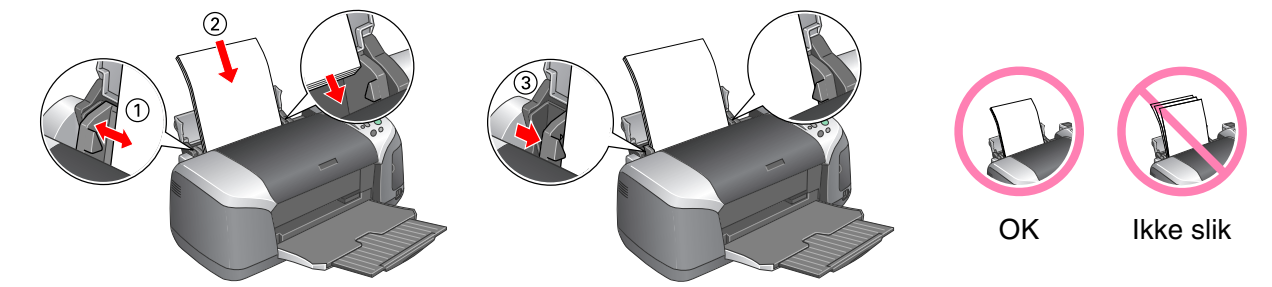
☐ Hvis installasjonsdialogboksen ikke vises, klikker du CD-ROM-ikonet.

For Macintosh



☐ For Mac OS 9-brukere: Gå til webområdet nedenfor for å laste ned driveren. <http://www.epson.com>

6. Legge inn papir



7. Få mer informasjon

