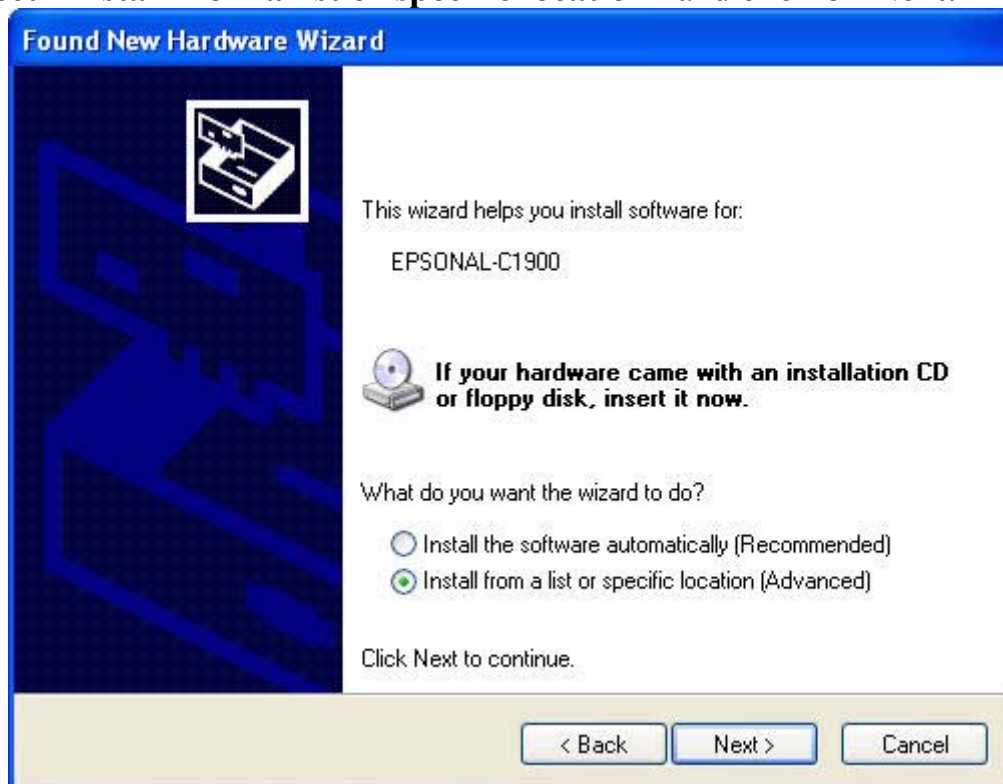


How to install a 64bits driver for an USB laser printer?

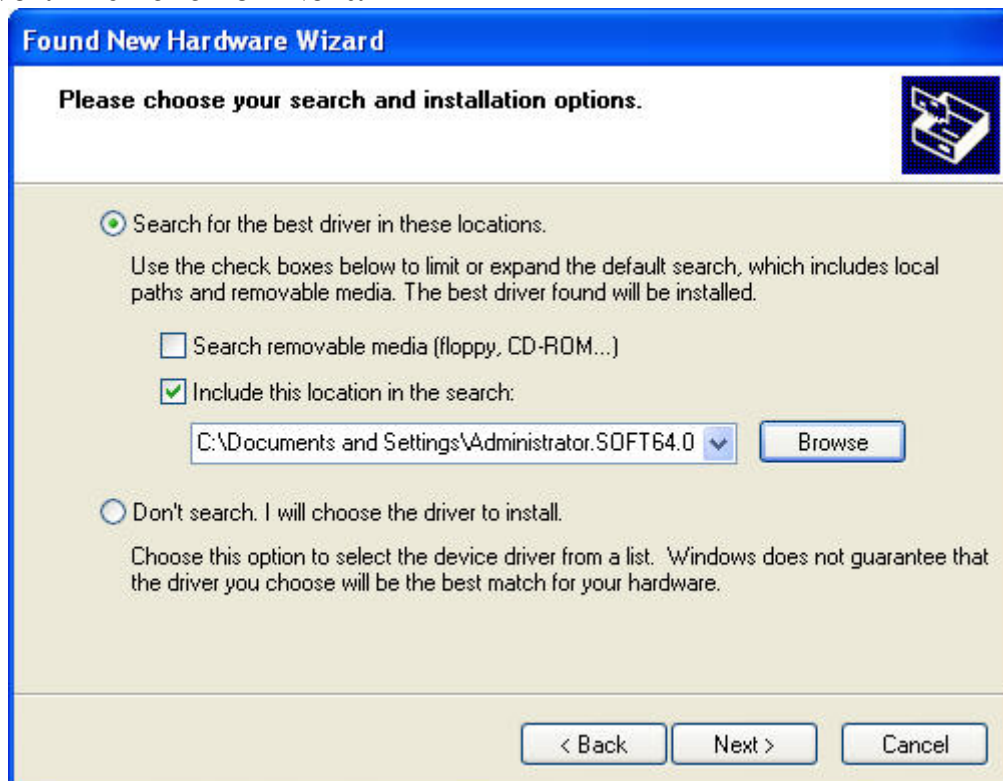
Connect your printer with the USB cable and turn it on. The “Found New Hardware Wizard” starts. **Select “No, not this time” and click on Next.**



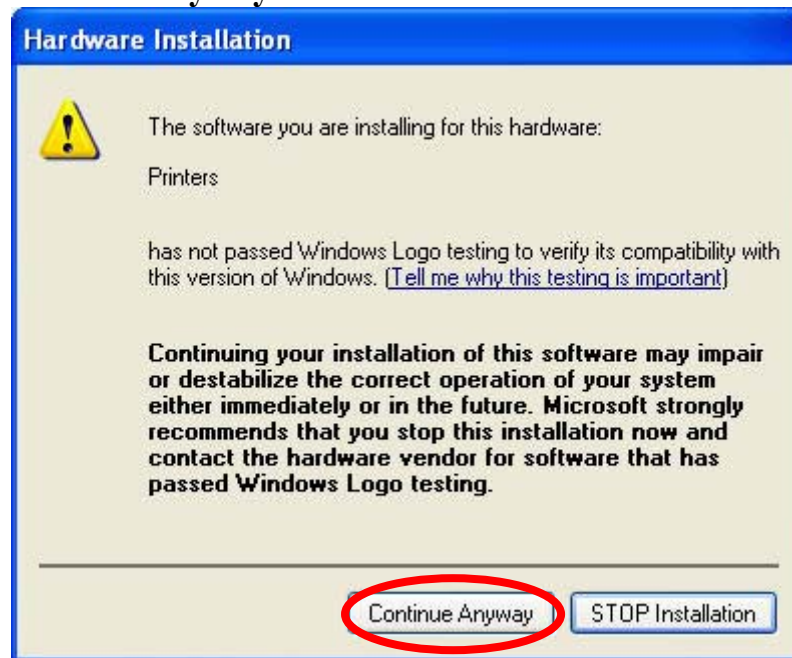
Select **“Install from a list or specific location”** and click on **Next**.



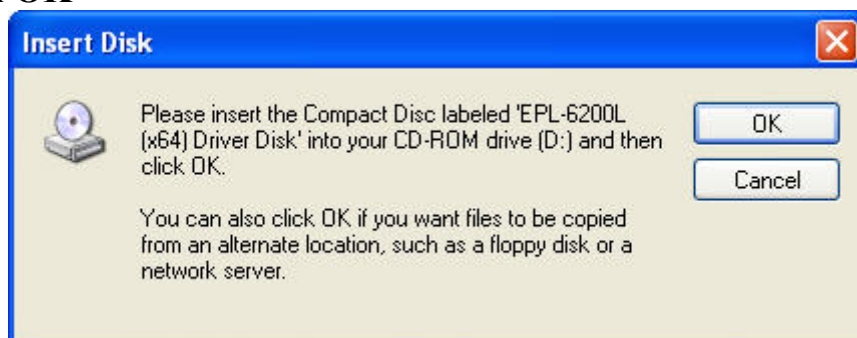
Select **“Search for the best driver in these location”** and **“Include this location in the search”**. With the **Browse** button, enter the path to the driver. Then click on **Next**.



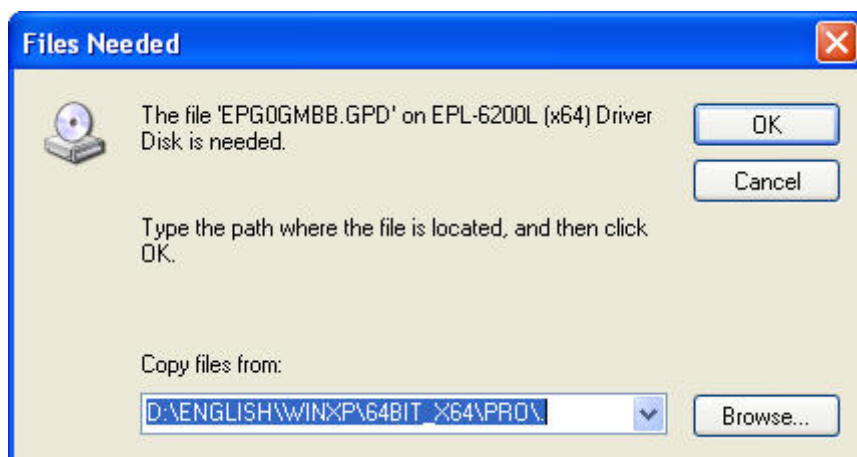
Click on Continue Anyway.



Click on OK



With the Browse button, enter the path to the driver folder. Then click on OK.



Click on Finish.

