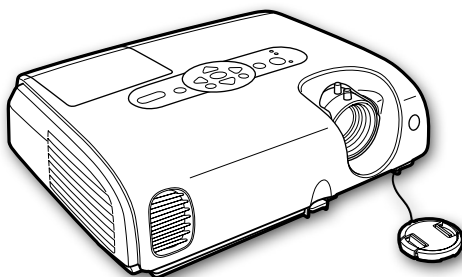


EPSON®



EMP-82 EMP-62 EMP-X3



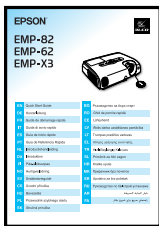
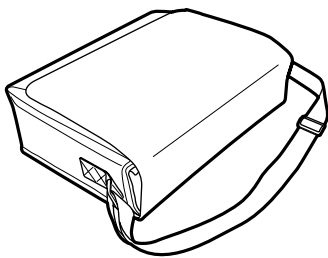
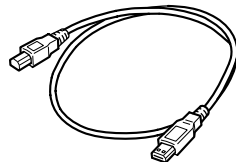
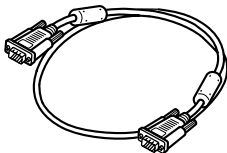
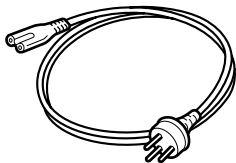
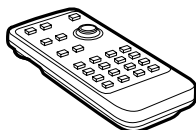
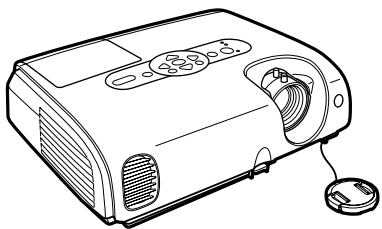
| | | | |
|-----------|-----------------------------|-----------|----------------------------------|
| EN | Quick Start Guide | BG | Ръководство за бърз старт |
| DE | Kurzanleitung | RO | Ghid de pornire rapidă |
| FR | Guide de démarrage rapide | EE | Lühijuhend |
| IT | Guida di avvio rapido | LV | Ātrās darba uzsākšanas pamācība |
| ES | Guía de inicio rápido | LT | Trumpas pradžios vadovas |
| PT | Guia de Referência Rápida | EL | Οδηγός γρήγορης εκκίνησης |
| NL | Introductiehandleiding | TR | Hızlı Başlangıç Kılavuzu |
| DA | Introduktion | SL | Priročnik za hitri zagon |
| FI | Pika-aloitusopas | HR | Kratke upute |
| NO | Hurtigveiledning | MK | Прирачник брз почеток |
| SV | Snabbstartsguide | SR | Uputstvo za brz početak |
| CS | Úvodní příručka | RU | Руководство по быстрой установке |
| HU | Bevezetés | AR | دليل البداية السريعة |
| PL | Przewodnik szybkiego startu | FA | راهنمای سریع برای شروع بکار |
| SK | Stručná príručka | | |

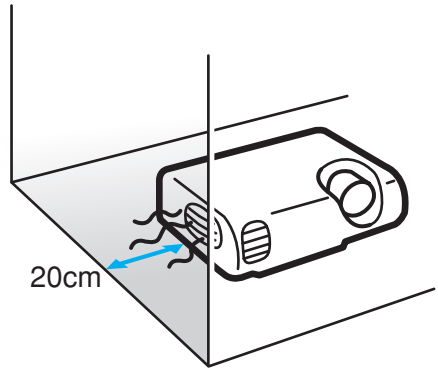
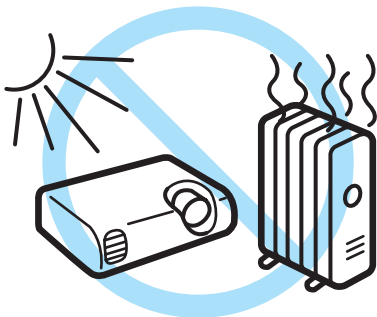
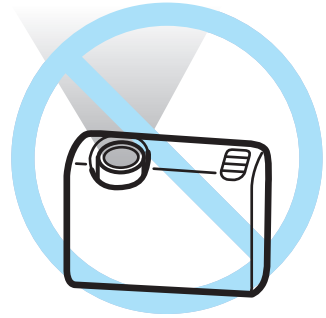
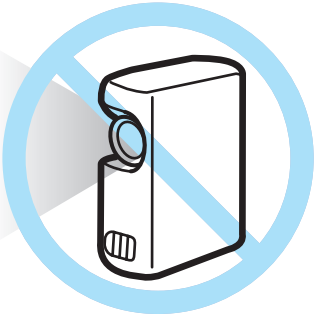
| | |
|-----------|---|
| EN | For detailed information, refer to the User's Guide on the Document CD-ROM |
| DE | Weitere Informationen finden Sie im Benutzerhandbuch auf der CD-ROM mit der Dokumentation. |
| FR | Pour des informations détaillées, consultez le Guide utilisateur figurant sur le CD-ROM de documentation |
| IT | Per informazioni dettagliate, consultare il manuale dell'utente disponibile nel CD-ROM della documentazione |
| ES | Para obtener información detallada, consulte la guía del usuario en el CD-ROM de la documentación |
| PT | Para mais informações, consulte o Manual do Utilizador no CD-ROM com documentação |
| NL | Raadpleeg voor meer informatie de gebruikershandleiding op de cd-rom met documentatie |
| DA | Yderligere oplysninger finder du i brugervejledningerne på cd-rom'en med dokumenter |
| FI | Lisätietoja on dokumentaatio-CD-levyllä olevassa käyttöoppaassa |
| NO | Du finner mer detaljert informasjon i brukerhåndboken på dokument-CD-ROMen |
| SV | Se användarhandboken på cd-rom-skivan med dokument för ytterligare information |
| CS | Podrobné informace naleznete v Uživatelské příručce na disku Documentation CD-ROM |
| HU | Részletesebb információk a CD-ROM-on lévő Használati útmutatóban találhatóak |
| PL | Szczegółowe informacje zawiera Przewodnik użytkownika na dysku CD-ROM z dokumentacją |
| SK | Podrobné informácie nájdete v Príručke používateľa na disku Documentation CD-ROM |

| | |
|-----------|--|
| BG | Подробна информация можете да намерите в Ръководствата за потребителя в компактдиска с документация |
| RO | Pentru informații detaliate, consultați Ghidul utilizatorului de pe CD-ul cu documentație |
| EE | Lähemat teavet vt kasutusjuhendist dokumentatsiooni CD-ROM-il |
| LV | Sīkāka informācija atrodama elektroniskajā Lietotāja rokasgrāmātā uz kompaktdiska |
| LT | Detalios informacijos ieškokite žinyne, esančiame dokumentacijos kompaktiniame diske |
| EL | Για περισσότερες πληροφορίες, ανατρέξτε στον Οδηγό χρήσης του CD-ROM |
| TR | Ayrıntılı bilgi için Documents (Dokümanlar) CD'sindeki Kullanım Kılavuzuna başvurun |
| SL | Podrobne informacije najdete na zgoščenki z Uporabniškimi priročniki. |
| HR | Za detaljnije informacije, pogledajte Korisničke upute na CD-ROM-u |
| MK | Za detaljni informacije ioglednete vo korisnčkiot priračnik na ЦД-РОМ-от со документи |
| SR | Za detaljnije informacije pogledajte korisničko uputstvo na CD-ROM-u sa dokumentacijom |
| RU | Для получения дополнительной информации см. Руководство пользователя на компактдиске с документацией |
| AR | للمعلومات المفصلة، يرجى الرجوع إلى دليل المستخدم في الأسطوانة المدمجة الخاصة بالرجوع |
| FA | برای اطلاعات مشروح، به راهنمای کاربر بر روی دیسک فشرده اسناد رجوع شود |

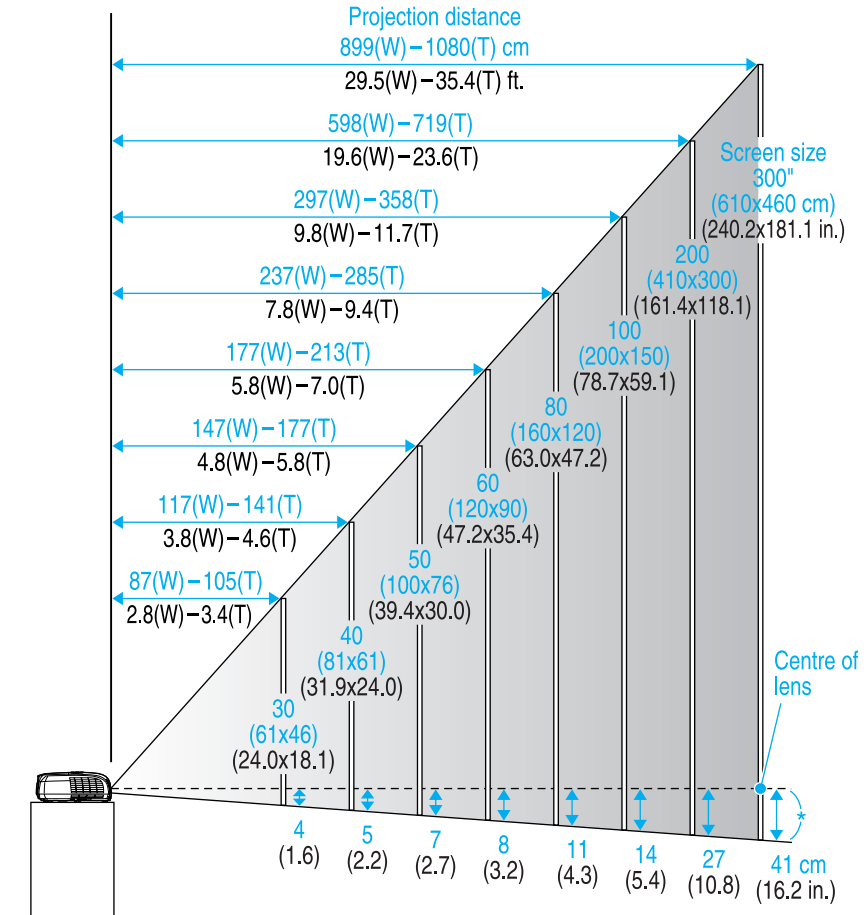
| | |
|-----------|----------------------------|
| EN | Content of the box |
| DE | Packungsinhalt |
| FR | Contenu de la boîte |
| IT | Contenuto della confezione |
| ES | Contenido del paquete |
| PT | Conteúdo da embalagem |
| NL | Inhoud van de doos |
| DA | Æskens indhold |
| FI | Laatikon sisältö |
| NO | Innholdet i esken |
| SV | Innehåll i lådan |
| CS | Obsah balení |
| HU | A doboz tartalma |
| PL | Zawartość opakowania |
| SK | Obsah balenia |

| | |
|-----------|-----------------------------|
| BG | Съдржание на кутията |
| RO | Conținutul cutiei |
| EE | Kasti sisu |
| LV | Komplektācija |
| LT | Dėžės turinys |
| EL | Περιεχόμενα της συσκευασίας |
| TR | Kutunun içeriği |
| SL | Vsebina paketa |
| HR | Sadržaj paketa |
| MK | Содржина на кутијата |
| SR | Sadržaj kutije |
| RU | Содержимое упаковки |
| AR | محتوى الصندوق |
| FA | محتویات جعبه |

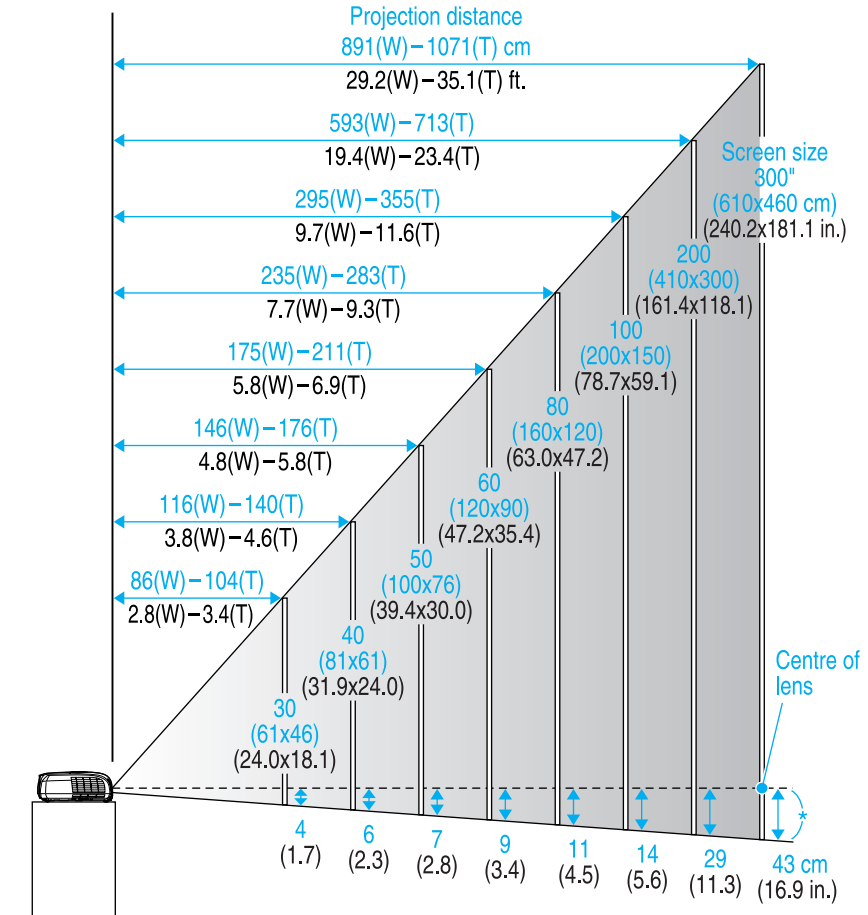


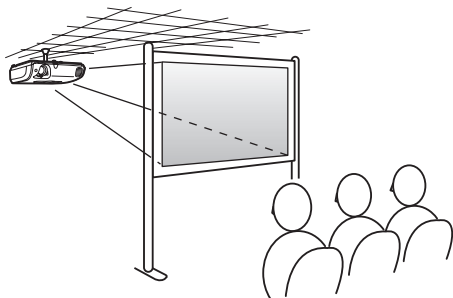
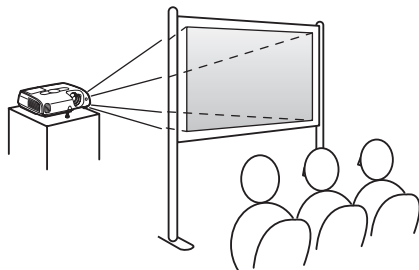
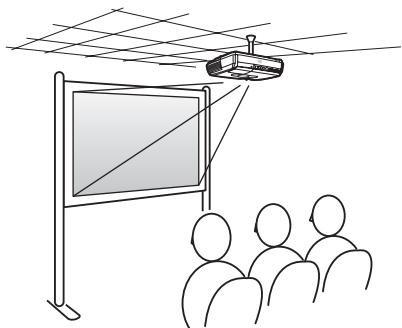
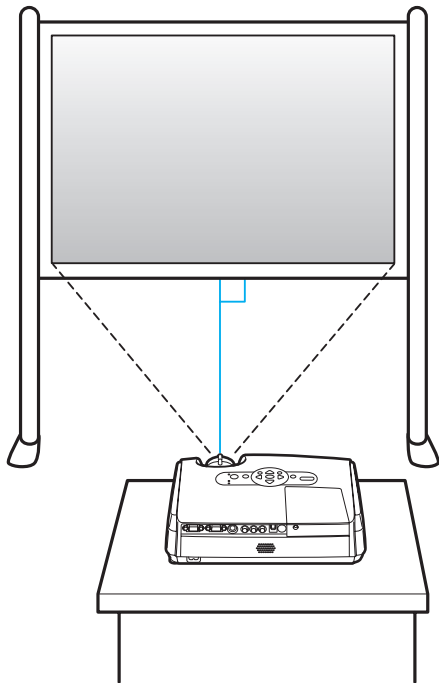


EMP-X3/82

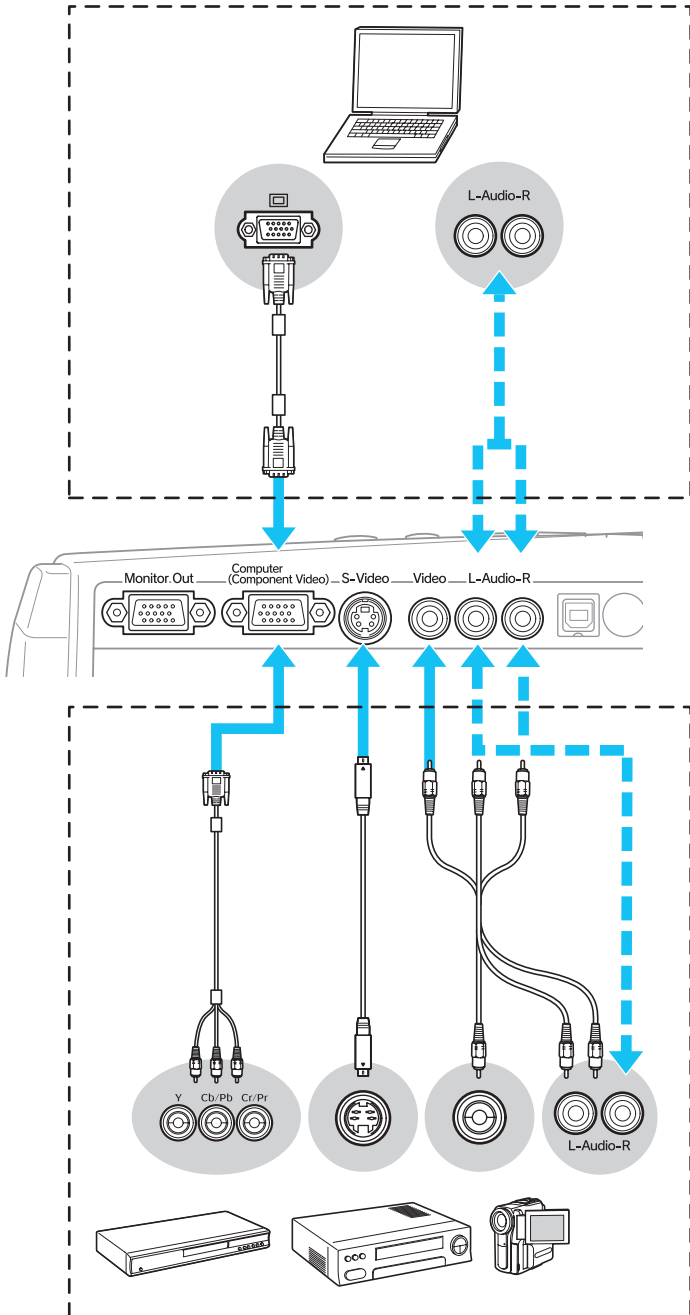


EMP-62

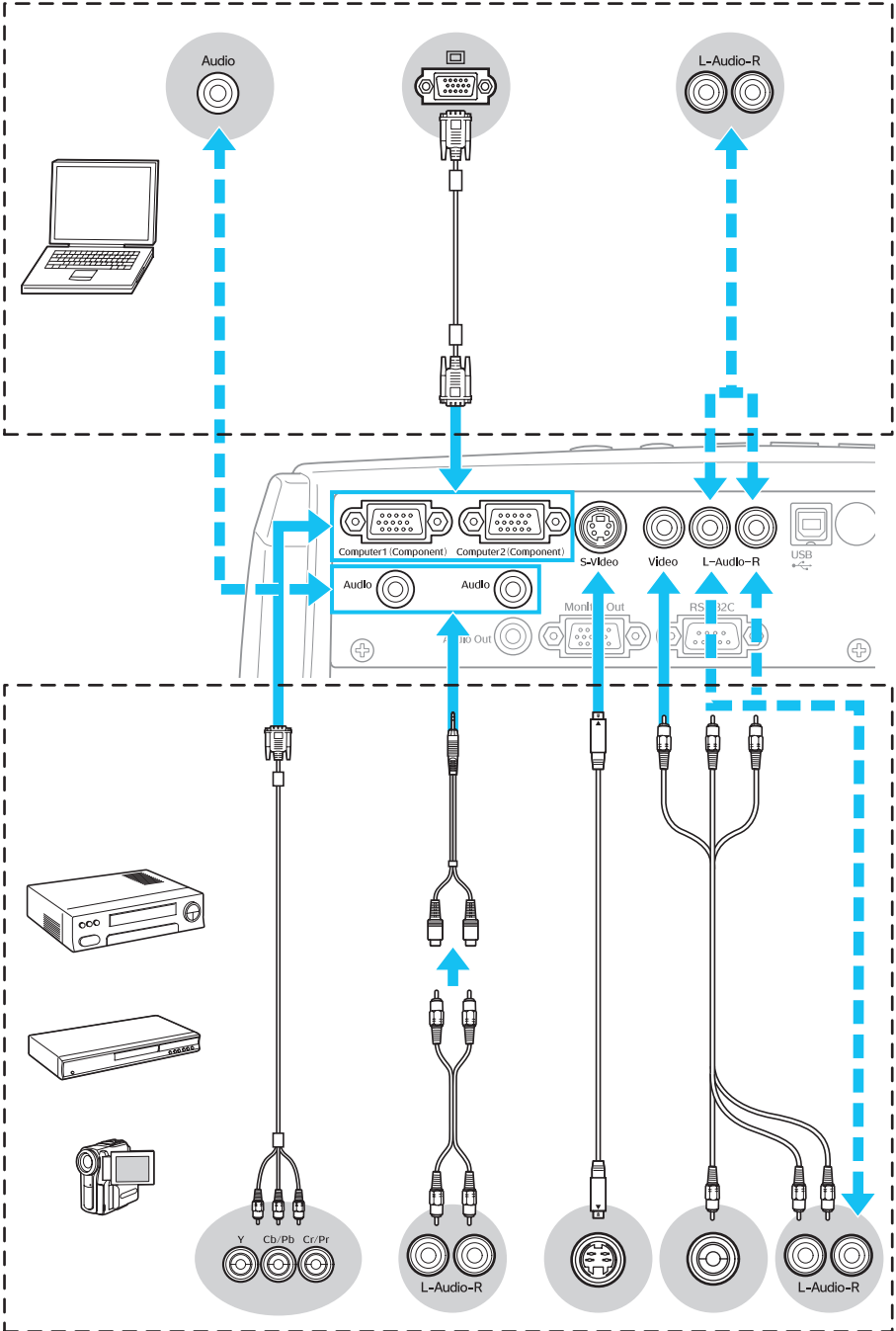




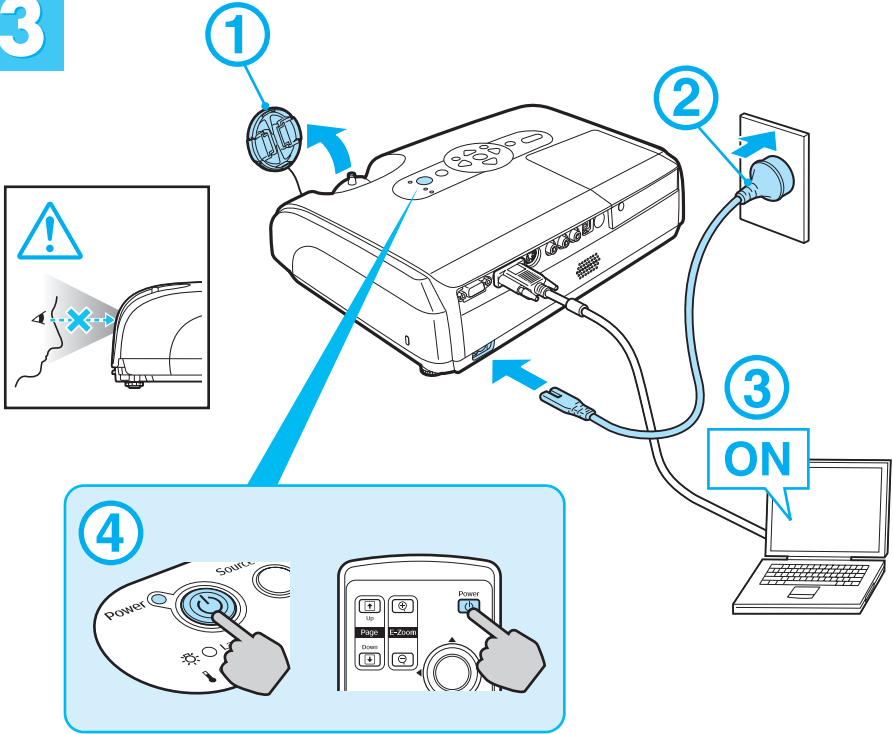
EMP-X3



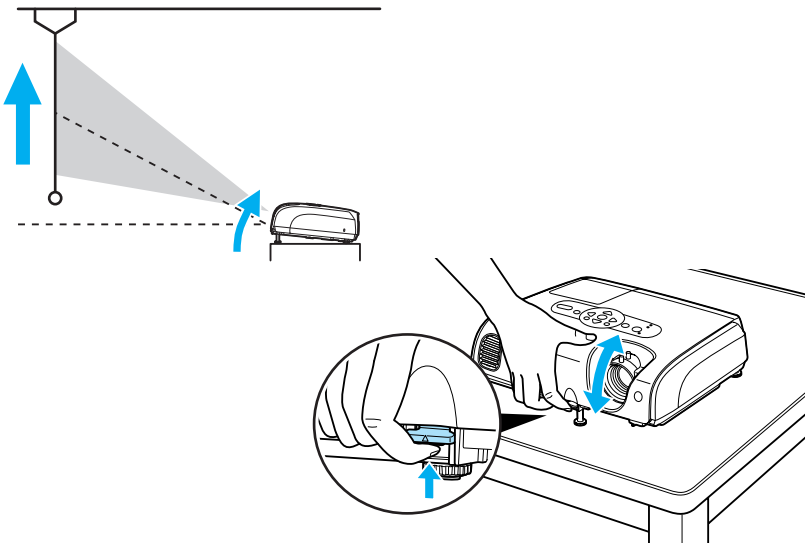
EMP-82/62



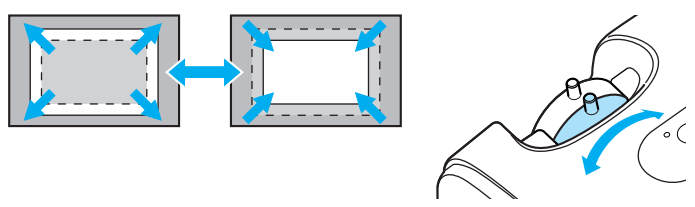
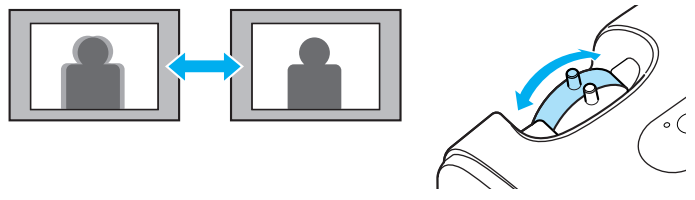
3



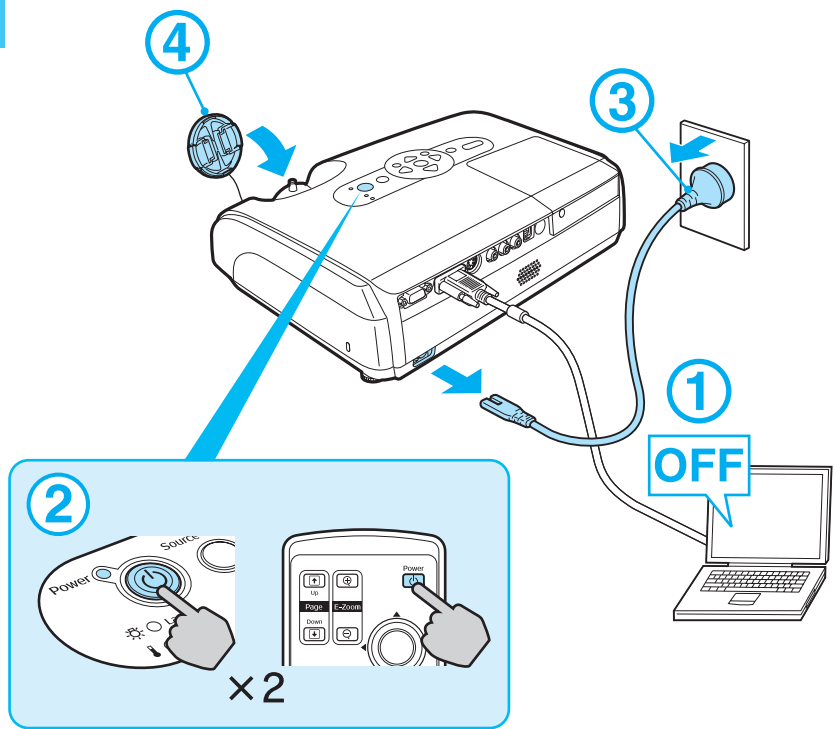
4

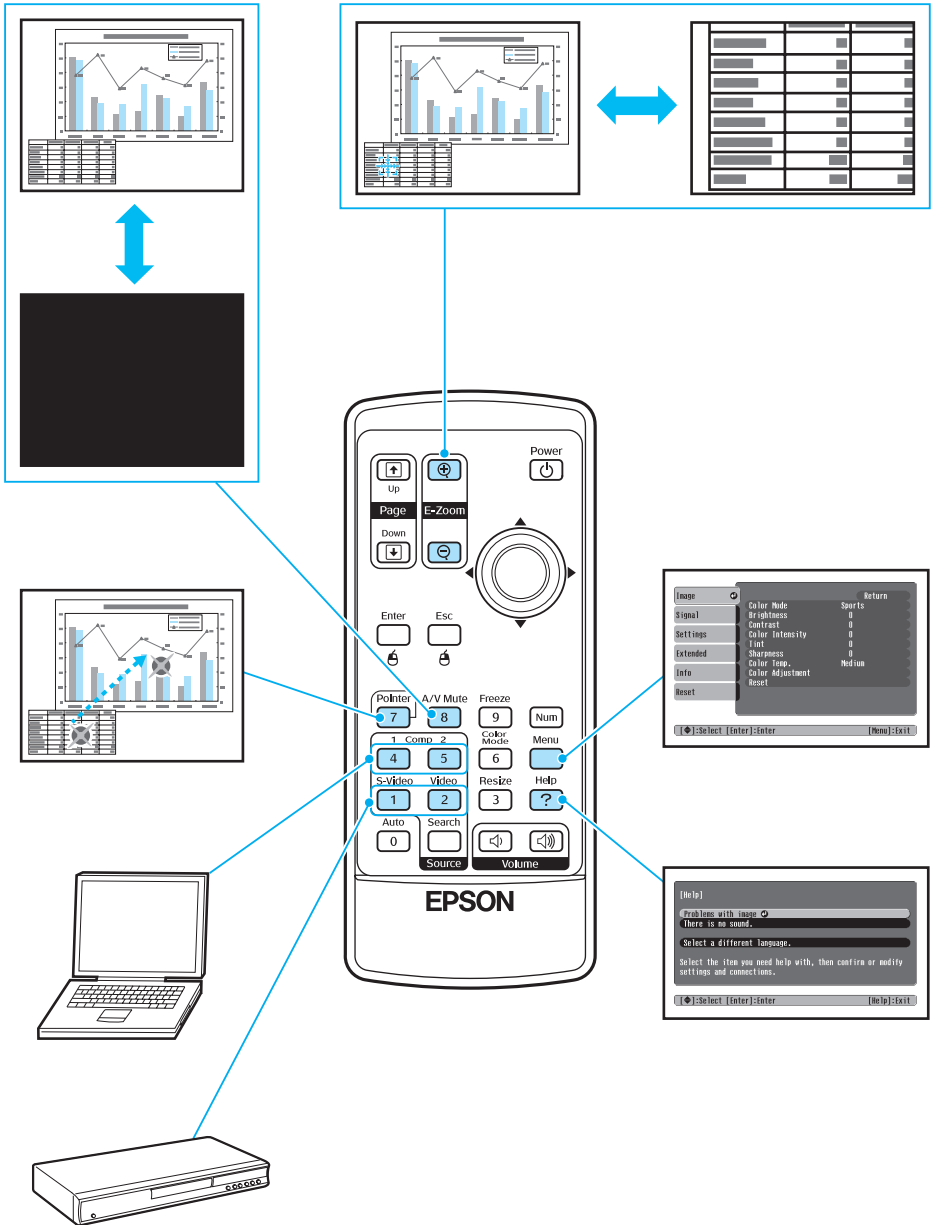


5



6





EPSON®



Printed in XXXXX
410328600
XX.XX-.XA(XXX)