






**EPSON**

# **EMP Monitor V4.02 Operation Guide**



The following table shows the symbols used in this manual, along with descriptions of what they mean.

	Indicates something that may cause injury or damage to the projector.
	Indicates information that is related to a topic or which may be useful to know.
	Indicates a page where a related topic or a more detailed explanation is provided. Click on the page number to display that page.
[ (Name) ]	Indicates the name of a projector port or a computer menu or item name. Example: [InputA] [Start]
	Indicates that the explanation continues on the following page. Clicking this symbol will display the following page.
	Indicates that the explanation is continued from the previous page. Clicking this symbol will display the previous page.

**Meanings of symbols used** **1**

---

**Tasks that can be done using EMP Monitor** **4**

---

**Operating environment** **5**

---

Compatible computers .....5

Before starting operations .....5

**Registering and deleting projectors for monitoring** **6**

---

Starting EMP Monitor .....6

Registering projectors using automatic search  
(Searching for and registering projectors that are  
located in the same segment) .....7

Procedures for automatic search .....7

Procedures for registration .....8

Setting the range of addresses to do an automatic  
search and registration .....9

Procedures for automatic search .....9

Procedures for registration .....10

Registration by specifying an IP address  
(Manual registration) .....11

Registering several projectors to a monitoring group  
all at once .....12

If the projector name or IP address changes  
after registration .....14

For projectors that have been registered manually .....14

For projectors that have been registered using  
automatic search .....14

Cancelling (deleting) projector registrations .....15

**Monitoring window layout** **16**

---

Monitoring using "Main View" .....16

Meanings of "Main View" icons .....16

Using the icons in "Main View" .....17

Monitoring using the system tray .....18

Displaying projectors with problem or warning  
statuses in a list .....19

Checking properties in detail .....20

Displaying group properties .....20

Displaying projector properties .....20

Displaying and deleting logs .....21

Displaying logs .....21

Deleting logs .....21



<b>Using the control functions</b>	<b>22</b>	<b>Troubleshooting</b>	<b>29</b>
Carrying out control using control buttons.....	22	Projectors cannot be monitored or controlled .....	29
Carrying out control using a web browser (EasyWeb retrieval) .....	23	An e-mail message is not sent when a problem occurs with a projector.....	29
Carrying out control using timer settings .....	23		
Procedures for new timer settings.....	24	<b>Appendices</b>	<b>30</b>
<b>Setting the mail notification function</b>	<b>25</b>	Serial ⇔ TCP/IP conversion adapter settings.....	30
<b>If a problem notification e-mail message has been sent</b>	<b>27</b>		
<b>Application lock function</b>	<b>28</b>		
Switching application lock between enabled and disabled.....	28		
Enabling the lock .....	28		
Disabling the lock .....	28		
Setting a password for cancelling application lock .....	28		

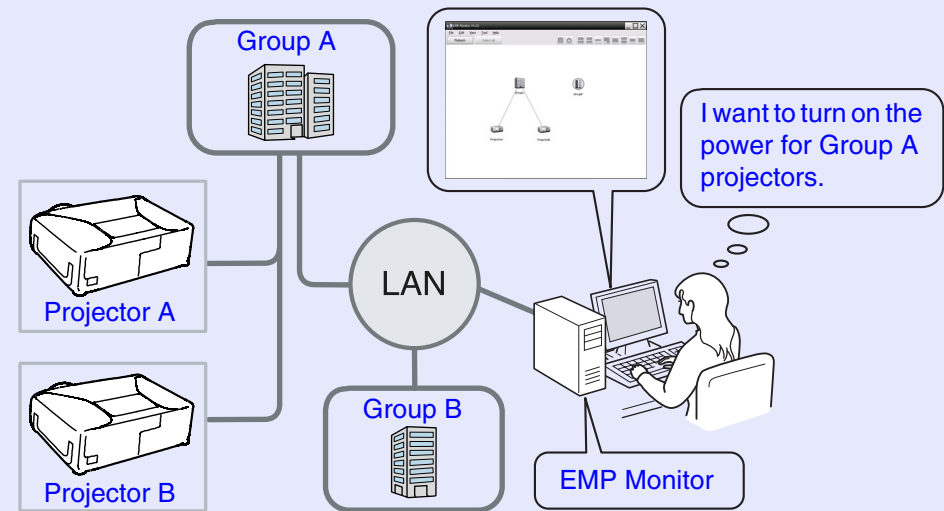


EMP Monitor lets you carry out operations such as checking the statuses of multiple EPSON projectors that are connected to a network at a computer monitor, and controlling the projectors from the computer.

Following are brief descriptions of the monitoring and control functions that can be carried out using EMP Monitor.

- **Registering projectors for monitoring and control**
  - Projectors on the network can be searched for automatically, and you can then select projectors to be registered from the projectors that are detected.
  - You can enter the IP addresses for target projectors to register them.
- **Registered projectors can also be assigned to groups so that they can be monitored and controlled in groups**
- **Monitoring the statuses of registered projectors**
  - The power status (ON/OFF) for projectors and problem and warning statuses can be checked visually by means of icons.
  - You can select groups of projectors or a single projector that you are interested in, and then check the cumulative lamp operating time or check the details of information on input sources, problems and warnings for these projectors.
- **Controlling registered projectors**
  - Projectors can be selected in groups or as single projectors, and you can then carry out operations for the selected projectors such as turning the power on and off and switching their input sources.
  - You can select any projector and use the EasyWeb function to change the settings of that projector in the configuration menu.
  - If there are certain control actions which are carried out regularly at particular times or on particular days, you can use "Timer Settings" to register timer settings.
- **E-mail notification function settings**

You can set e-mail addresses for problem notifications to be sent to if a problem occurs with a projector that has been registered.



System configuration example



## TIP

*To enable projectors to be monitored and controlled even when they are in standby mode\*, make the following settings at the projectors. The settings that need to be made will vary depending on the projector you are using.*

*☛ "Configuration menus" in the projector's User's Guide.*

- *Set "Network Monitoring" to "ON".*
- *Set "Standby Mode" to "Network ON".*

*\* When the projector's ⏻ (Power) indicator is lit orange*

## Compatible computers

Macintosh computers cannot be used.

OS	98SE/Me/NT4.0/2000 Professional/XP Home Edition/XP Professional • Internet Explorer Ver. 5.0 or later must be installed.
CPU	Pentium MMX 166 MHz or higher (Pentium II 233 MHz or higher recommended)
Memory capacity	64 MB or more (128 MB or more recommended)
Free hard disk space	20 MB or more
Display	SVGA (800×600) or higher resolution, 32 bit or higher display colour

\* Operations carried out at the computer may become slow depending on the number of projectors being managed. If this happens, use a computer with higher specifications.

\* EMP Monitor cannot be used in environments which do not allow pings to be transmitted.

## Before starting operations

Check the following points before starting up EMP Monitor.

- EMP Monitor must be installed on the computer to be used for monitoring and control.
- The computer and the projectors must be connected to the network.
- If using Windows 2000, NT4.0 or XP, the computer must be started up in Administrator mode.

### When using EMP-821/81/61

- A serial ⇔ TCP/IP conversion adapter and a connection cable are required in order to use EMP Monitor.
    - ☛ "Standby mode" in the projector's *User's Guide*
  - When connecting a projector with a serial ⇔ TCP/IP conversion adapter, make the settings of the adapter in advance.
    - ☛ The serial ⇔ TCP/IP conversion adapter manual
- For details on the adapter settings, see the "Appendices" ☛ [p.30](#)

This operation is carried out when starting EMP Monitor for the first time after it has been installed and when you would like to add projectors. Once a projector has been registered, the status for the projector will be displayed automatically each time EMP Monitor is started from that point onwards.

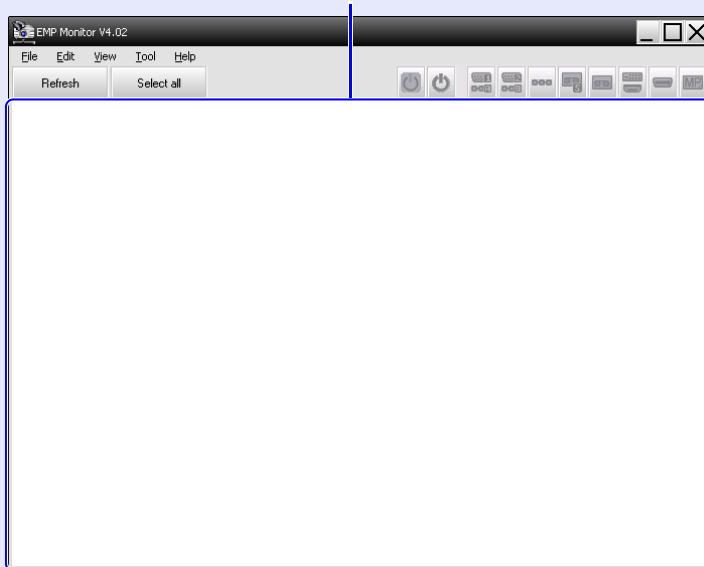
## Starting EMP Monitor

### PROCEDURE

**1** Click [Start] - [Programs] (or [All Programs]) - [EPSON Projector] - [EMP Monitor V4.02] in that order to start EMP Monitor.

**2** The main window will be displayed.

"Main View"



The operations to register projectors using the automatic searching will vary depending on where the projectors are connected to in the network.

- When registering a projector that is located in the same segment that the computer the EMP Monitor is installed in is associated with. ➡ "Registering projectors using automatic search (Searching for and registering projectors that are located in the same segment)" p.7
- When registering projectors that are in multiple segments of the network ➡ "Setting the range of addresses to do an automatic search and registration" p.9

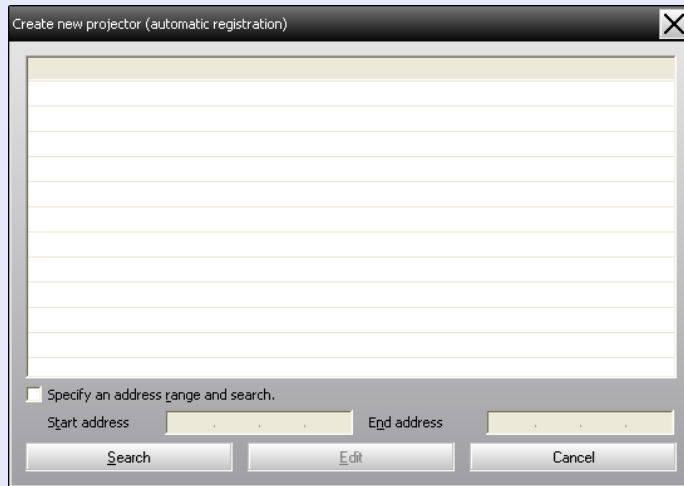
## Registering projectors using automatic search (Searching for and registering projectors that are located in the same segment)

### PROCEDURE

#### Procedures for automatic search

- 1 Right-click in "Main View" and select "New" - "Projector (automatic search)".

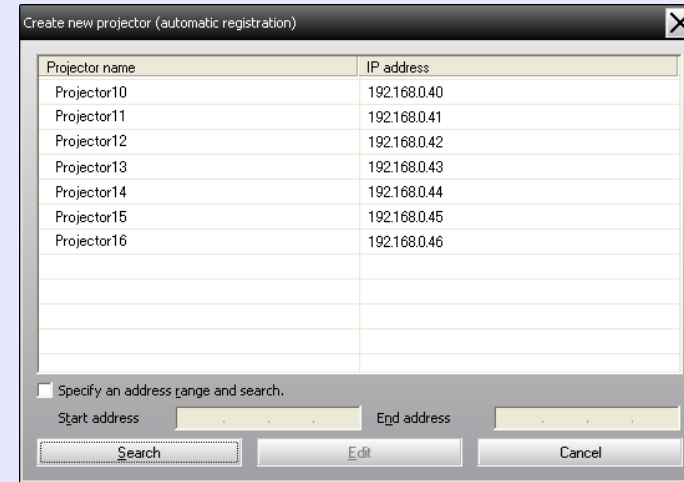
The "Create new projector (automatic registration)" window will be displayed.



- 2 Click [Search].

Automatic searching will be carried out, and the names of the projectors that have been detected will be displayed.

- If a projector does not appear in the list, use "Registration by specifying an IP address (Manual registration)". [p.11](#)



### TIP

- You can also carry out this operation by selecting "Projector (automatic search)" from "New" in the "Edit" menu.
- Projectors that are using a serial  $\leftrightarrow$  TCP/IP conversion adapter cannot be detected.





■ Procedures for registration

**3** Select the projector(s) to be registered, and then click [Edit].

The following window will be displayed.  
Make the necessary settings while referring to the table below.



Display name	Enter the name of the projector that is to be displayed in "Main View". Up to a maximum of 32 bytes can be entered. A space cannot be used as the first character.
Display icon	Select the icon to be displayed in "Main View".
Parent group	Select when registering a projector in a group. If no groups have been created, this cannot be selected. 🖱️ "Registering several projectors to a monitoring group all at once" <a href="#">p.12</a>
Projector name	This shows the name that has been registered on the projector.
IP address	This shows the IP address for the registered projector.

Use Serial↔ TCP/IP conversion adaptor.	This cannot be selected when registering projectors using automatic search.
Port Number	This cannot be selected when registering projectors using automatic search.
Password	If a password has been set for the projector, be sure to enter the password that has been set. If the correct password is not entered at this time, it will not be possible to monitor and control the projector even though it is registered.
Monitor	Select this when you want monitoring to start.

**4** After entering the details, click [Register] to start the registration. When the message is displayed, click [OK].

To continue registering another projector, repeat the procedure from step 3.



**TIP**

*Projectors that have been registered using automatic search are searched for again by projector name each time EMP Monitor is started.*

**5** To end the registration operation, click the **✕** in the top-right corner of the window or click [Cancel].

The registered projectors will be displayed in "Main View" using the icons that were selected previously in the "Edit" window.

Refer to "Monitoring window layout" for details on using the main window. 🖱️ [p.16](#)



## Setting the range of addresses to do an automatic search and registration



**TIP**

*Projectors that are using a serial  $\Leftrightarrow$  TCP/IP conversion adapter cannot be detected.*

### PROCEDURE

#### Procedures for automatic search

- 1 Right-click in "Main View" and select "New" - "Projector (automatic search)".

The "Create new projector (automatic registration)" window will be displayed.

- 2 Select the "Specify an address range and search" check box and then enter the starting address and ending address in the range.

Start address: 192 . 168 . 0 . 00      End address: 192 . 168 . 0 . 50

Buttons: Search, Edit, Cancel

- 3 Click [Search].  
Automatic searching will be carried out, and the names of the projectors that have been detected will be displayed.

Projector name	IP address
Projector10	192.168.0.40
Projector11	192.168.0.41
Projector12	192.168.0.42
Projector13	192.168.0.43
Projector14	192.168.0.44
Projector15	192.168.0.45
Projector16	192.168.0.46

Start address: 192 . 168 . 0 . 00      End address: 192 . 168 . 0 . 50

Buttons: Search, Edit, Cancel

■ Procedures for registration

**4** Select the projector(s) to be registered, and then click [Edit].

The following window will be displayed.  
Make the necessary settings while referring to the table below.



Display name	Enter the name of the projector that is to be displayed in "Main View". Up to a maximum of 32 bytes can be entered. A space cannot be used as the first character.
Display icon	Select the icon to be displayed in "Main View".
Parent group	Select when registering a projector in a group. If no groups have been created, this cannot be selected. 🖱️ "Registering several projectors to a monitoring group all at once" <a href="#">p.12</a>
Projector name	This shows the name that has been registered on the projector.
IP address	This shows the IP address for the registered projector.

Use Serial↔ TCP/IP conversion adaptor.	This cannot be selected when registering projectors using automatic search.
Port Number	This cannot be selected when registering projectors using automatic search.
Password	If a password has been set for the projector, be sure to enter the password that has been set. If the correct password is not entered at this time, it will not be possible to monitor and control the projector even though it is registered.
Monitor	Select this when you want monitoring to start.

**5** After entering the details, click [Register] to start the registration. When the message is displayed, click [OK].

To continue registering another projector, repeat the procedure from step 4.



**TIP**

*Projectors that have been registered using automatic search are searched for again by projector name each time EMP Monitor is started.*

**6** To end the registration operation, click **✕** in the top-right corner of the window or click [Cancel].

The registered projectors will be displayed in "Main View" using the icons that were selected previously in the "Edit" window.

Refer to "Monitoring window layout" for details on using the main window. 🖱️ [p.16](#)

## Registration by specifying an IP address (Manual registration)

### PROCEDURE

- 1 Right-click in "Main View" and select "New" - "Projector (manual registration)".

The following window will be displayed.



### TIP

You can also carry out this operation by selecting "Projector (manual registration)" from "New" in the "Edit" menu.

- 2 Enter the IP address of the projector to be registered in the "IP address" box and then click [Search]. When the message is displayed, click [OK].

- If using a serial  $\leftrightarrow$  TCP/IP conversion adaptor and cable to connect the projector, select "Use Serial  $\leftrightarrow$  TCP/IP conversion adaptor". Enter the port number in "Port Number" and then click [Search].

- 3 After searching is complete, enter the information for the projector to be registered while referring to the table below.

Display name	Enter the name of the projector that is to be displayed in "Main View". Up to a maximum of 32 bytes can be entered. A space cannot be used as the first character.
Display icon	Select the icon to be displayed in "Main View".
Parent group	Select when registering a projector in a group. If no groups have been created, this cannot be selected.  "Registering several projectors to a monitoring group all at once" <a href="#">p.12</a>
Projector name	This shows the name that has been registered on the projector.
IP address	Enter the IP address for the projector to be registered.
Use Serial $\leftrightarrow$ TCP/IP conversion adaptor.	Select this if using a serial $\leftrightarrow$ TCP/IP conversion adaptor to connect the projector.
Port Number	If using a serial $\leftrightarrow$ TCP/IP conversion adaptor to connect the projector, enter the port number.



Password	If a password has been set for the projector, be sure to enter the password that has been set. If the correct password is not entered at this time, it will not be possible to monitor and control the projector even though it is registered. If using a serial ⇔ TCP/IP conversion adapter to connect the projector, the password security function cannot be used.
Monitor	Select this when you want monitoring to start.



**TIP**

*"Password" and "Monitor" can be set once searching for the projector to be registered is complete.*

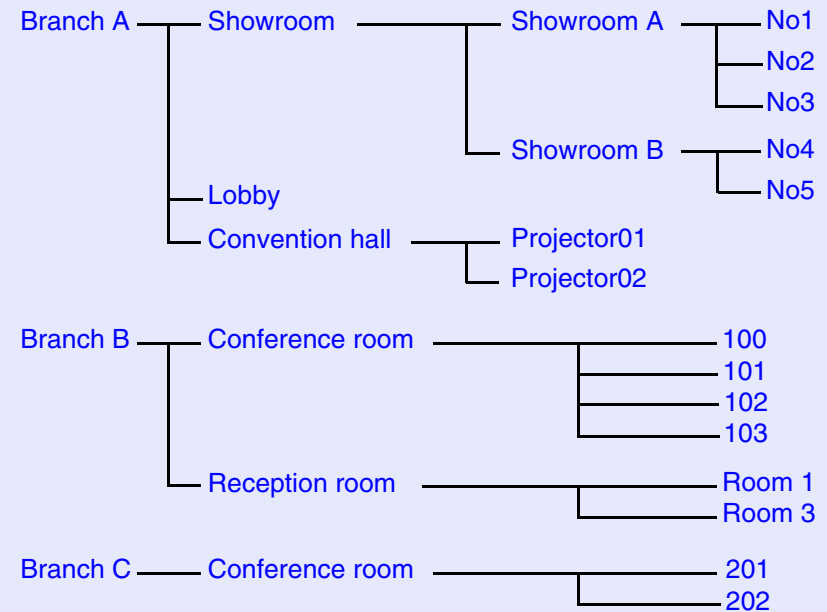
**4** After entering the details, click [Register] to start the registration. When the message is displayed, click [OK].

The registered projectors will be displayed in "Main View" using the icons that were selected previously in the "Manual registration" window.

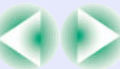
## Registering several projectors to a monitoring group all at once

Projectors that have been registered can then be registered together into different groups so that they can be monitored and controlled together. Furthermore, if you select one of the registered groups as the "Parent group", monitoring and control operations can be carried out for all projectors in that "Parent group".

A "Parent group" can be set for other parent groups, so that a hierarchical group arrangement such as the following can be created.



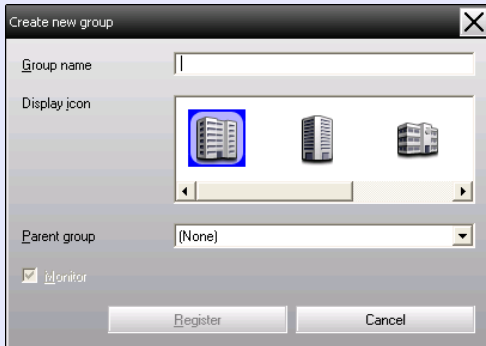
First, create the registration groups, and then register projectors into the groups that have been created.



**PROCEDURE**

- 1 Right-click in "Main View" and select "New" - "Group".**

The following window will be displayed.  
Make the necessary settings while referring to the table below.



Group name	Enter the group name to be displayed in "Main View". Up to a maximum of 32 bytes can be entered. A space cannot be used as the first character.
Display icon	Select the icon to be displayed in "Main View".
Parent group	This selects the parent group. It cannot be selected if no groups have been created.
Monitor	Select this to monitor all projectors that have been registered in the group. If this is not selected, the settings made when the individual projectors were registered will be used. It cannot be set when creating a new group.



**TIP**

*You can also carry out this operation by selecting "Group" from "New" in the "Edit" menu.*

**2**

After entering the details, click [Register] to start the registration. When the message is displayed, click [OK].

A group icon will be displayed in "Main View".

**3**

Right-click the icon that is displayed in "Main View" for the projector that is to be registered in the created group, and then click [Edit].



**TIP**

*You can also carry out this operation by selecting "Edit" from the "Edit" menu.*

**4**

In the "Edit projector" window, select the group name to use for registering in "Parent group" and then click [Change].

The status of the group registration will be displayed as an icon in "Main View".



**TIP**

*The registration details can also be checked using "Show projector list view" in the "View" menu.*



## If the projector name or IP address changes after registration

- For projectors that have been registered manually

### PROCEDURE

- 1 Right-click the desired projector icon that is displayed in "Main View" and select "Monitoring disabled". Then right-click the projector icon again and select "Edit".



### TIP

*You can also carry out these operations by using the "Edit" menu.*

- 2 If only the projector name has been changed, click [Search] in the "Edit projector" window that is displayed.  
If the IP address has been changed, enter the new IP address in the "IP address" box and then click [Search]. When the message is displayed, click [OK].
- 3 When the display returns to the "Edit projector" window, click [Change].

- For projectors that have been registered using automatic search

### PROCEDURE

- 1 In "Main View", delete the projector that has been changed. p.15
- 2 Carry out automatic search once more to re-register the projector. p.7

## Cancelling (deleting) projector registrations

The registrations for projectors can be deleted if they are no longer required for monitoring or control using EMP Monitor.

### PROCEDURE

**Right-click the icon that is displayed in "Main View" for the projector or group registration that is to be deleted, and then click [Delete].**

**When the message is displayed, click [OK].**

More than one projector can be selected for deleting in "Main View" at the same time.

The methods of selecting more than one projector at the same time are as follow.

- If you select a group icon, all projectors that have been registered in that group will be deleted at the same time.
- Hold down the [Ctrl] key on the keyboard while clicking on the desired icons.
- Use drag and drop to select a range of desired icons.



#### TIP

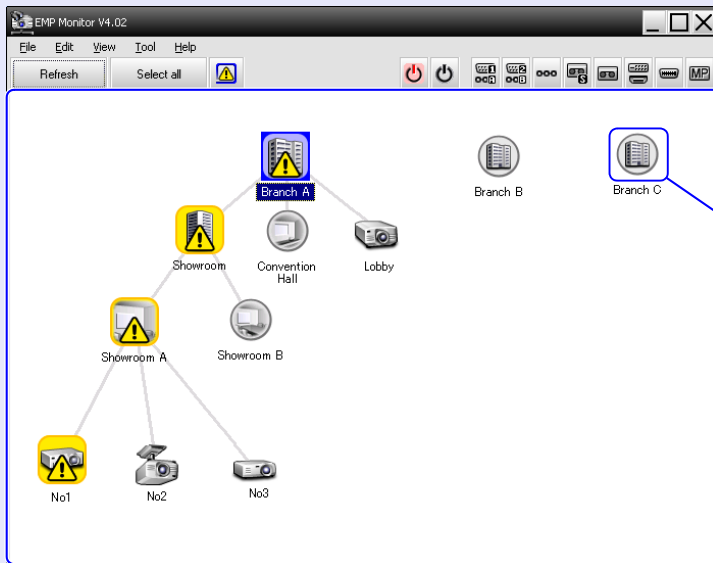
*You can also carry out this operation by selecting "Delete" from the "Edit" menu.*



## Monitoring using "Main View"

### ■ Meanings of "Main View" icons





The registered projectors and groups are displayed as icons in "Main View", and the patterns on the icons indicate the statuses of the projectors.











"Main View"

If the group icons are round in shape, it indicates that there is another level below them. p.17

The icon patterns and their meanings are explained below.

Group	
	No warnings or problems All projectors in the group are normal.
	Warning or problem A projector in the group has a warning or problem status.
	Monitoring disabled The projector is not being monitored. If you right-click the icon and select "Monitoring enabled", the projector will be added to the projectors that are being monitored.
	Data being updated



Projector	
	No warnings or problems
	Warning or problem
	<b>Password error</b> No password was entered when the projector was registered, or an incorrect password was entered.  <a href="#">p.8, 10, 12</a>
	<b>Monitoring disabled</b> The projector is not being monitored. If you right-click the icon and select "Monitoring enabled", the projector will be added to the projectors that are being monitored.
	Data being updated
	Network error (TCP connection error) <sup>*1</sup>
	Network error (ESC/VP.net communication error) <sup>*2</sup>

\*1 Check the following items.

- Check that the projector's power is turned on.
- Check that the LAN cable is connected.
- Check that "Network Monitoring" is set to "ON" and "Standby Mode" is set to "Network ON" on the projector.

\*2 Check that the projector has been correctly connected to the network.



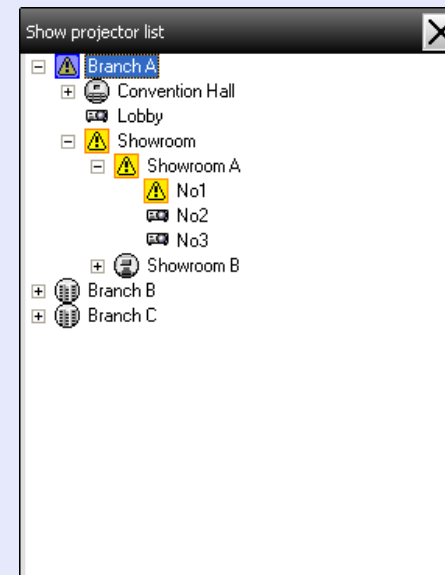
**TIP**

*The projector information that is generated when a problem is detected is stored until EMP Monitor is closed. The EMP Monitor displays will not be updated automatically even if the projector status returns to normal. Click [Refresh] in the main window to update the status.*

## Using the icons in "Main View"

The following icon operations can be carried out in "Main View".

- **Expanding and collapsing icons**  
Each time you double-click a group icon, the icons for the projector that have been registered in that group are displayed or hidden.
- **Moving icons**  
To change the position of an icon within "Main View", simply drag and drop the icon to be moved.
- **Searching for desired icons**  
If several groups and projectors have been registered so that it is difficult to find the desired icon, use the following operation to retrieve "Show Projector List".  
Select "View" menu - "Show projector list view"



The "Show projector list" lets you check the registration details for groups in a hierarchical diagram. When you click on an icon, the selected icon is displayed in the centre of "Main View".



## Monitoring using the system tray

The projector statuses are always displayed as icons in the system tray, even when "Main View" is not always displayed, and the statuses can be checked by the icon patterns.

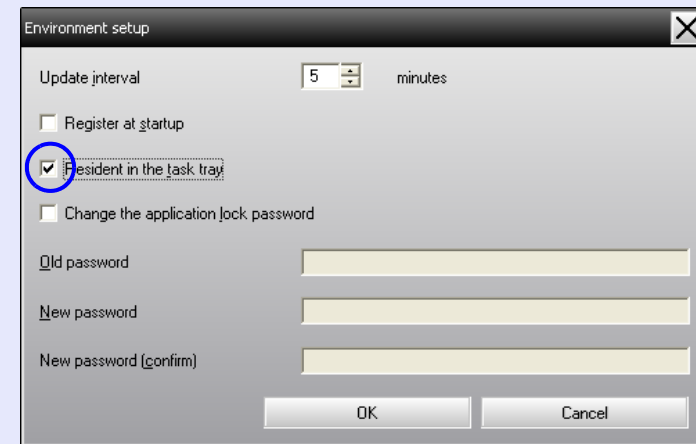
When the configuration menus are set using the following operations, an icon appears in the system tray and the status can be monitored by means of the icon's pattern.



### PROCEDURE

**1** Select "Environment setup" from the "Tool" menu.  
The "Environment setup" window will be displayed.

**2** Select "Resident in the task tray".



**3** Click [OK].



### TIP

- Right-click the icon in the system tray to open a pop-up menu to select the "Open the main screen" or "Exit".
- If "Register at start up" in the "Environment set up" is selected, EMP Monitor starts automatically when the computer's power is turned on.

## Displaying projectors with problem or warning statuses in a list

You can display a list of only the projectors which have a problem or warning status.

### PROCEDURE

Select "Warning and Error Projector list" from the "View" menu.

The following "Warning and Error Projector list" window will be displayed.

If you move the mouse pointer over the icon, details of the error and the remedy will be displayed.

If you double-click in a row, the properties for that projector will be displayed.

p.20

The icon patterns and their meanings are explained below.

<b>Type:</b> Shows the group or projector status. p.16			
<b>Display name:</b> Shows the display name.			
<b>Power:</b> Shows the power on status for the projector.			
	Power on and normal status		Power on and abnormal status
	Power off and normal status		Power off and abnormal status
<b>Lamp Hours:</b> Shows the lamp operating time for the projector.			
<b>Source:</b> Shows the input source that has been selected for the projector.			
	Computer, Computer1 or InputA		Video
	Computer2 or InputB		DVI or HDMI (Digital)
	BNC		D-Video
	S-Video		Easy MP
<b>Error information:</b> Shows the warning or problem status using the following icons.			
	Lamp life warning		High-temperature warning
	Air-filter replacement		Internal (system) error
	Lamp cover open error (Lamp error)		Fan error
	Lamp out		Sensor error
	Lamp failure at power on		Electric dual-layered capacitor is disconnected
	Internal-temperature extremes		

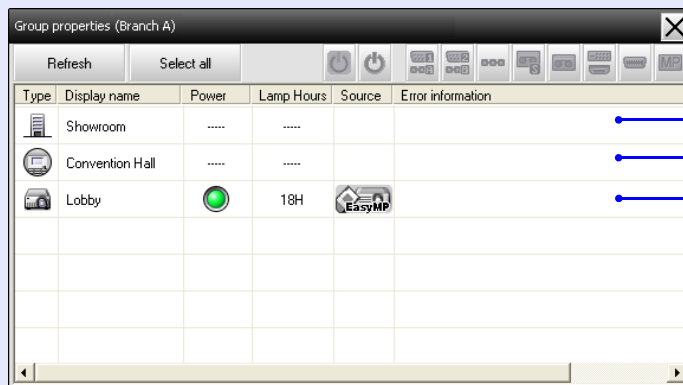
## Checking properties in detail

You can check the properties of groups and projectors in detail.

### ■ Displaying group properties

You can use either of the following methods to display the properties.

- Displaying the properties for all groups in "Main View"  
Right-click in "Main View" and then select "Property".
- Displaying properties for specified groups  
Right-click the icon for the desired group and then select "Property".



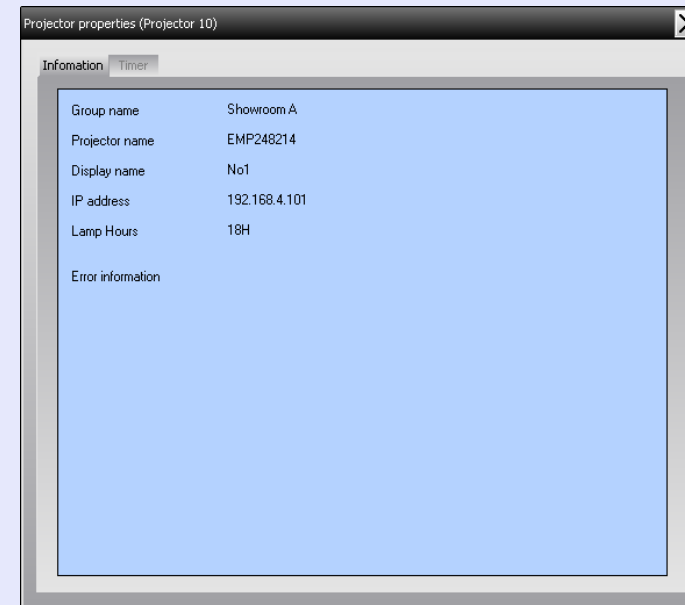
The screenshot shows a window titled "Group properties (Branch A)" with a toolbar and a table. The table has columns for Type, Display name, Power, Lamp Hours, Source, and Error information. The data rows are:

Type	Display name	Power	Lamp Hours	Source	Error information
Icon of a building	Showroom	.....	.....		
Icon of a screen	Convention Hall	.....	.....		
Icon of a projector	Lobby		18H		

If you double-click in a row, the properties for that group or projector will be displayed.

### ■ Displaying projector properties

Right-click the icon for the desired projector and then select "Property".



The screenshot shows a window titled "Projector properties (Projector 10)" with two tabs: "Information" and "Timer". The "Information" tab is active and displays the following details:

Group name	Showroom A
Projector name	EMP248214
Display name	No1
IP address	192.168.4.101
Lamp Hours	18H
Error information	

## Displaying and deleting logs

In your web browser, you can check a transmission log of content such as what has been controlled by the EMP Monitor, projector errors. You can delete logs once you have checked them.

**TIP**

*The transmission log can store up to 10 MB of data.*

### ■ Displaying logs

#### PROCEDURE

**Select "Log" - "show" from the "View" menu.**

The web browser will open and the communication logs up until that time will be displayed.

### ■ Deleting logs

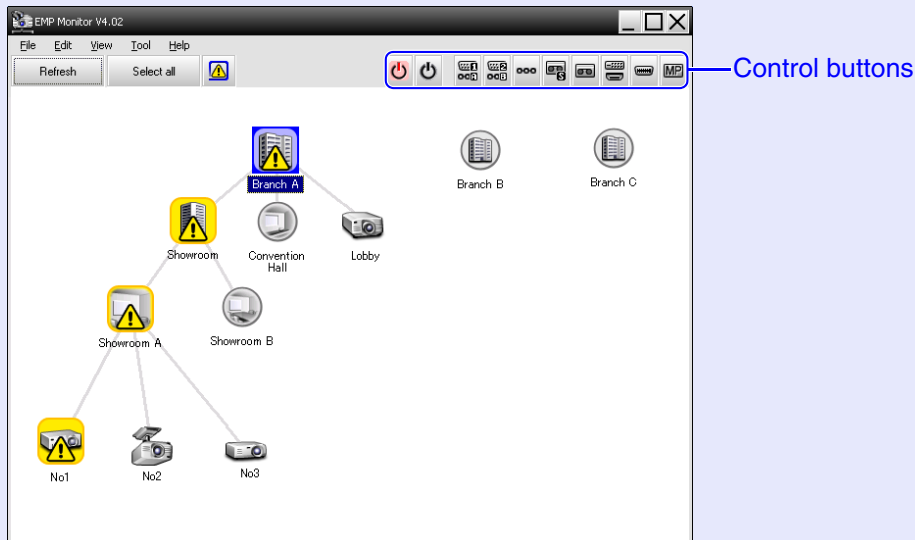
#### PROCEDURE

**Select "Log" - "Delete" from the "View" menu.  
When the confirmation message is displayed, click [OK].**






All logs will be deleted and details of EMP Monitor control operations and details of projector errors from that point onward will be recorded in a new log.






## Carrying out control using control buttons

Select the icons for groups or individual projectors to be controlled in "Main View". If you select a group icon, all projectors that have been registered in that group can be controlled at the same time. If you select a projector icon, only the selected projector will be controlled.




The meanings of the control buttons are given below.

 Power On	Turns the projector power on.
 Power Off	Turns the projector power off.
 Switch source PC1, InputA	Switches to the input source connected to the [Computer] port, [Computer1] port or [InputA] port.
 Switch source PC2, InputB	Switches to the input source connected to the [Computer2] port or [InputB] port.
 Switch source BNC	Switches to the input source connected to the [BNC] port.

 Switch source S-Video	Switches to the input source connected to the [S-Video] port.
 Switch source Video	Switches to the input source connected to the [Video] port.
 Switch source DVI, HDMI	Switches to the input source connected to the [DVI] port or [HDMI] port.
 Switch source D-Video	Switches to the input source connected to the [D4] port.
 Switch source EasyMP	Switches to EasyMP or EasyMP.net.



- **Some connected projectors may not be equipped with all of the above ports or functions. If you click a button for a port or function that is not available, nothing will happen.**
- **You can select objects to be controlled and use the control buttons to carry out control operations even when the following are being displayed.  For details on each display [p.19, 20](#)**
  - **Group properties**
  - **Projector properties**
  - **Warning and Error Projector list (Control operations can only be carried out for projectors with a warning status.)**

## Carrying out control using a web browser (EasyWeb retrieval)

You can use the computer's web browser to change the configuration menu settings for projectors.

### PROCEDURE

- 1 Right-click the icon in "Main View" for the projector to be controlled, and then select "View webpages".
- 2 The web browser will open and EasyWeb will be displayed.

Refer to the documentation provided with the projector for details on using EasyWeb.



### TIP

*You can select projectors and right-click on them to select "View webpages" even when the following are being displayed.*

- *Group properties* [p.20](#)
- *Warning and Error Projector list (Control operations can only be carried out for projectors with a warning status.)* [p.19](#)

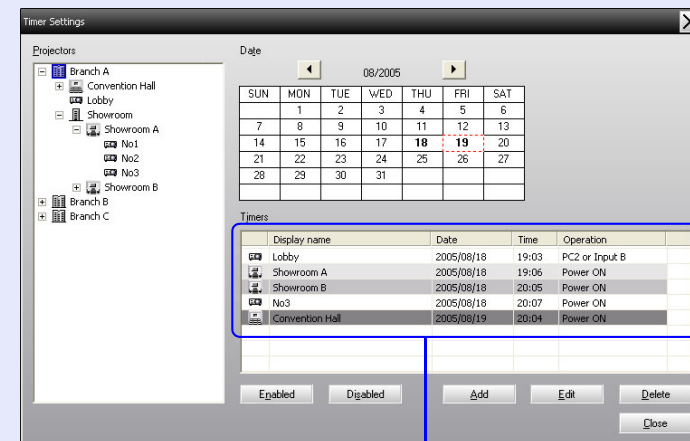
## Carrying out control using timer settings

This is useful for carrying out certain control operations such as turning a projector's power on and off at specified times every day or every week. Timer settings can be carried out either for a single projector only, or all at once for all projectors in a group.

### PROCEDURE

- 1 Select "Timer" - "Timer Settings" from the "Tool" menu.

The following window will be displayed and you can then check the timer setting status.



The colours in the rows of the list have the following meanings:

- : Current day's timer setting
- : When some of the projectors in the group have timer setting enabled and others have it disabled for the current day's timer setting
- : When the current day's timer setting is a disabled setting
- : Timer setting for a day other than the current day





The details that can be checked and operations that can be carried out at this time are given below.

Projectors	Selects a group or projector to check the status of. When a group is selected, the timer setting statuses for all projectors in that group are displayed.
Date	Shows the current day in a red box. Days for which timer settings have been made are shown in bold. Click ◀ or ▶ to switch to the calendar for the previous or next month.
Timers	Shows a list of the timer settings.
[Enabled] [Disabled]	Switches the timer settings that have been selected from the timer list between enabled and disabled.
[Add]	Registers new timer settings.
[Edit]	Lets you change the timer settings that have been selected from the timer list. If a group has been selected for status checking, the settings cannot be changed.
[Delete]	Lets you delete timer settings that have been selected from the timer list.

## ■ Procedures for new timer settings

- 2** When you click "Add", the following window is displayed and the new timer settings are applied.

In the "Operation", you can carry out the operations of turning the power on and off and switching the input sources, similarly for the control buttons on the main window. If you set the input source switching, the projector's power will turn on at the timer start time even if it is not on at the time. Because of this, it is not necessary to make two separate timer settings for turning the power on and switching the input source.

- 3** After completing the timer settings, click [OK].

The timer settings that have been made will be registered and they can be checked in the displayed timer list.



### TIP

*You can enable and disable all of the timer settings that have been registered. Select "Timer" - "Enable" or "Disable" from the "Tool" menu.*

The mail notification function can be used to send notification messages to preset e-mail addresses when a problem or warning occurs with a projector that is connected to the network. By using this function, the operator can be notified of problems with projectors even when the operator is in a different location from the projectors.



**TIP**

- *Up to three addressees (destinations) can be registered and messages can be sent to all of them at once.*
- *If a critical problem develops with a projector which causes it to suddenly stop working, it may not be possible for the projector to send a message notifying an operator of the problem.*
- *If "Standby Mode" is set to "Network ON" or "Network Monitoring" is set to "ON" in the projector configuration menus, you can monitor the projector even when it is in standby mode (when its power is turned off). Projector's User's Guide*

**PROCEDURE**

**1** Select "Mail notification function" from the "Tool" menu.

**2** The "Set mail notification function" window will be displayed.

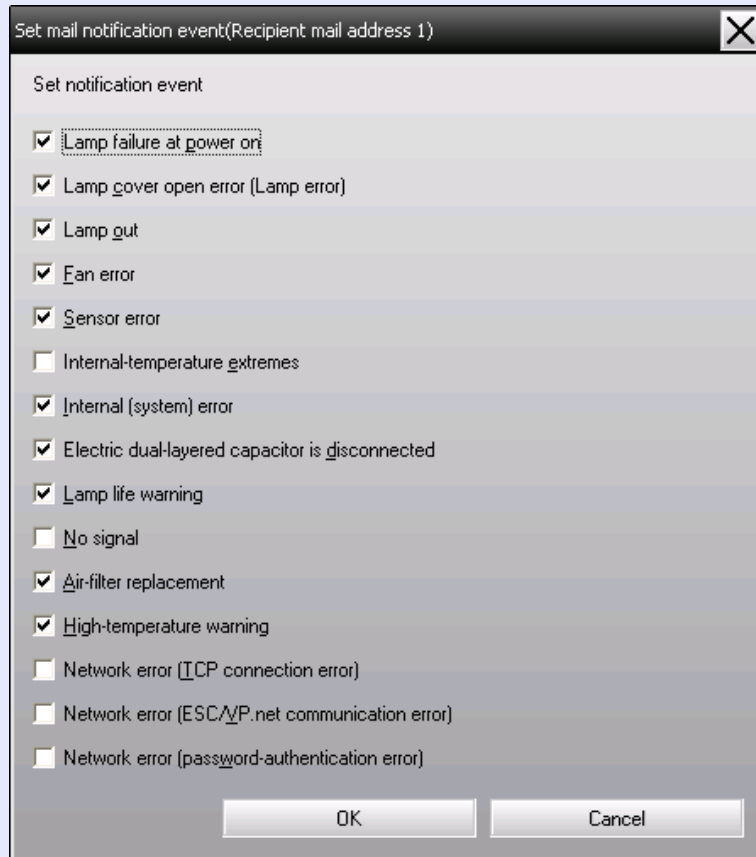
Set the following parameters.



Mail notification function	Set to "ON" to use the mail notification function.
SMTP server IP address	Enter the IP address of the SMTP server. Up to a maximum of 255 bytes can be entered.  When you change a port number of the SMTP server, specify this port number. The default value is "25". You can enter a valid number from 1 to 65535.
Sender mail address	Enter the sender's e-mail address. Up to a maximum of 255 bytes can be entered.
Recipient mail address 1	Specify the destination addresses for the notification e-mail. Up to three destinations can be set. Up to a maximum of 255 bytes can be entered.
Recipient mail address 2	
Recipient mail address 3	



- 3** Click [Notification event] and check the items for mail notification in the window that appears.



- 4** Click [OK].

When the "Set mail notification function" window appears again, repeat Steps 3 and 4 to set the events to be notified.

- 5** When the setup is complete, click [OK].



# If a problem notification e-mail message has been sent

If a problem occurs with a projector, an e-mail message containing the following will be sent to all e-mail addresses that have been specified in "Recipient mail address".

If there is more than one problem, details for each problem will appear on separate lines.

Item	Details shown
E-mail subject	[Display name that is displayed in "Main View"] Projector warning/error notification
Body	The following warning/error has occurred on <Display name that is displayed in "Main View" (IP address)> <Warning/error message (Please see the table below)> Immediately check the projector.

The details contained in the e-mail message can consist of the following.

Message	Remedy
Internal (system) error	"Reading the indicators" ☛ "Reading the Indicators" in the projector's <i>User's Guide</i>
Fan error	
Sensor error	
Lamp cover open error (Lamp error)	
Lamp failure at power on	
Lamp out	
Internal-temperature extremes	
High-temperature warning	
Lamp life warning	

Message	Remedy
No signal	No image signals are being received by the projector. Check the connection status and check that the power for the connected equipment is turned on.
Electric dual-layered capacitor is disconnected	The capacitor is not connected properly. Stop using the projector, disconnect the power cable from the electrical outlet, and contact your dealer or the nearest address provided in the "International Warranty Conditions" section of the <i>Safety Instructions/World-Wide Warranty Terms</i> booklet supplied with the projector.
Air-filter replacement	Clean or replace the air filter or clean the air intake vent. ☛ "Maintenance" in the projector's <i>User's Guide</i>
Network error (TCP connection error)	Check that the projector's power is turned on and the LAN cable is connected, and also check that "Network Monitoring" is set to "ON" and "Standby Mode" is set to "Network ON".
Network error (ESC/VP.net communication error)	Check that the projector has been correctly connected to the network.
Network error (password-authentication error)	Check the projector's password.

Messages to inform that the projector has recovered from the error or warning statuses are not sent at all.

You can use the application lock to prevent third parties from operating the projectors using EMP Monitor and changing settings without authority. Opening and closing EMP Monitor and status monitoring can still be carried out even when the application lock is applied. In addition, when a password has been set, the password must be entered in order to cancel the application lock. This ensures that the application lock can not be easily cancelled, and thus improves system security.

## Switching application lock between enabled and disabled

### ■ Enabling the lock

#### PROCEDURE

Select **"Application lock"** from the **"Tool"** menu.

The application lock will be enabled and no operations will be possible other than opening and closing EMP Monitor and disabling the application lock.

### ■ Disabling the lock

#### PROCEDURE

**1** Select **"Application unlock"** from the **"Tool"** menu.

**2** The password entry window will be displayed, so enter the set password and then click [OK].

If no password has been set (default setting), click [OK] without entering a password. It is recommended that you enter a password in order to strengthen security.

The application lock will be cancelled and operations can be carried out as normal.

## Setting a password for cancelling application lock

Carry out the following operations while application lock is cancelled.

#### PROCEDURE

**1** Select **"Environment setup"** from the **"Tool"** menu.

The "Environment setup" window will be displayed.

**2** Select **"Change the application lock password"**.

**3** Enter the password in both the **"New password"** and **"New password (confirm)"** boxes and then click [OK].

The password can be up to 16 bytes in length. Single-byte alphanumeric characters can be used.

## Projectors cannot be monitored or controlled

Cause	Remedy
Is the projector connected to the network correctly?	Connect the network cable correctly. ☛ "Network Cable Connections" in the projector's <i>User's Guide</i>
Has the projector been set up correctly for connection to the network?	Check the settings for the "Network" configuration menu command. ☛ Projector's <i>User's Guide</i>
Has EMP Monitor been installed on the computer correctly?	Uninstall EMP Monitor and then re-install it.
Are all the projectors that you want to control or monitor registered in "Main View"?	Register the projector in "Main View". ☛ p.6
Is the projector's "Network Monitoring" or "Standby Mode" configuration menu set to "ON" or "Network ON"?	In order to use EMP Monitor to monitor and control the projector when it is in standby mode, the projector's "Network Monitoring" or "Standby Mode" configuration menu must be set to "ON" or "Network ON". ☛ Projector's <i>User's Guide</i>

## An e-mail message is not sent when a problem occurs with a projector

Cause	Remedy
Is the projector connected to the network correctly?	Connect the network cable correctly. ☛ "Network Cable Connections" in the projector's <i>User's Guide</i>
Has the projector been set up correctly for connection to the network?	Check the settings for the "Network" configuration menu command. ☛ Projector's <i>User's Guide</i>
Have the SMTP server IP address, port number and recipient e-mail address all been set correctly?	Check the setting details.
Is the projector's "Network Monitoring" or "Standby Mode" configuration menu set to "ON" or "Network ON"?	To use the mail notification function while the projector is in standby mode, set "Network Monitoring" or "Standby Mode" to "ON" or "Network ON" in the projector's configuration menus. ☛ Projector's <i>User's Guide</i>
Has a critical problem developed causing the projector to momentarily stop working?	When the projector has momentarily stopped working, it cannot send e-mail messages. If the projector cannot be reset even after it has been checked, contact your dealer or the nearest address provided in the "International Warranty Conditions" section of the <i>Safety Instructions/World-Wide Warranty Terms</i> booklet supplied with the projector.
Is power being supplied to the projector?	Check if the power supply to the location where the projector is set up has been interrupted, or if the circuit breaker for the electrical outlet that the projector is connected to has been tripped.

## Serial ⇔ TCP/IP conversion adapter settings

If using the EMP-821/81/61, the following serial ⇔ TCP/IP conversion adapter settings must be made.

Menu	Main Item	Sub Item	Setting	
			UDS100	UDS200
Port Properties	Serial Port Settings	Serial Protocol	RS232	
		Speed	9600	
		Character Size	8	
		Parity	None	
		Stopbit	1	
		Flow Control	None	
	Connect Mode Settings	UDP Datagram Mode	Disable	
		UDP Datagram Type	(Blank)	
		Response	Nothing (quiet)	
	Additional Settings	Port Password	Disable	
		Telnet Mode	Disable	
		Inactivity Timeout	Enable	
		Port Password	(Blank)	
Security	Security Settings	Encryption	-	Disable (Not selectable)
		Twofish Key	-	(Blank)

All rights reserved. No part of this publication may be reproduced, stored in a retrieval system, or transmitted in any form or by any means, electronic, mechanical, photocopying, recording, or otherwise, without the prior written permission of SEIKO EPSON CORPORATION. No patent liability is assumed with respect to the use of the information contained herein. Neither is any liability assumed for damages resulting from the use of the information contained herein.

Neither SEIKO EPSON CORPORATION nor its affiliates shall be liable to the purchaser of this product or third parties for damages, losses, costs, or expenses incurred by purchasers or third parties as a result of: accident, misuse, or abuse of this product or unauthorized modifications, repairs, or alterations to this product, or (excluding the U.S.) failure to strictly comply with SEIKO EPSON CORPORATION's operating and maintenance instructions.

SEIKO EPSON CORPORATION shall not be liable against any damages or problems arising from the use of any options or any consumable products other than those designated as Original EPSON Products or EPSON Approved Products by SEIKO EPSON CORPORATION.

**General Notice:**

EasyMP and EasyMP.net are trademarks of SEIKO EPSON CORPORATION.

Windows and Windows NT are trademarks of Microsoft Corporation in the United States of America and other countries.

Macintosh is a registered trademark of Apple Computer, Inc.

Pentium is a registered trademark of Intel Corporation.

Other product names used herein are also for identification purposes only and may be trademarks of their respective owners. EPSON disclaims any and all rights in those marks.