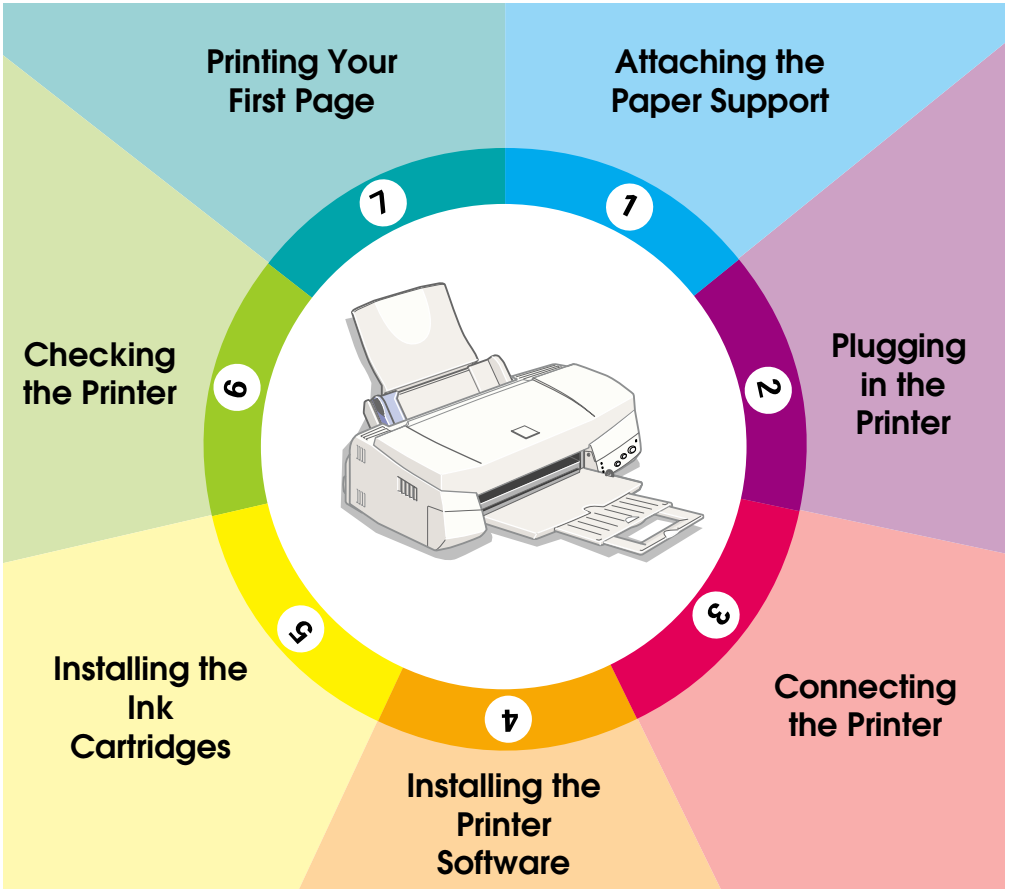


# EPSON

Color Ink Jet Printer

## EPSON STYLUS™ COLOR 670

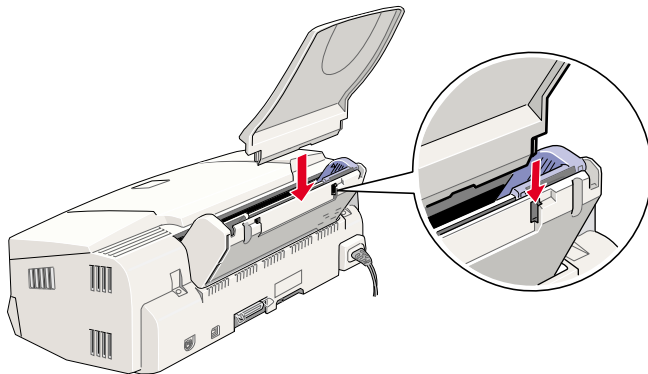


# Setup Guide

# 1


## Attaching the Paper Support

Insert the paper support into the slots at the rear of the printer.



# 2

## Plugging in the Printer

1. Make sure that the printer is turned off. It is off when the  power button protrudes slightly from the surface of the control panel.
2. Check the label on the back of the printer to make sure the voltage required by the printer matches that of the electrical outlet you will be plugging it into. Also, make sure that you have the correct power cable for your power source.



### **Caution:**

*It is not possible to change the printer's voltage. If the rated voltage and your outlet voltage do not match, contact your dealer for assistance. Do not plug in the power cord.*

3. If the power cord is not attached to the printer, connect it to the AC inlet on the back of the printer.
4. Plug the power cord into a properly grounded electrical outlet.

# 3

## Connecting the Printer

If you have a PC, it is possible to connect to your printer via the parallel or USB interface. Macintosh can only be connected via the USB interface. Depending upon your geographic location, you may have to acquire the appropriate cable. See "Options and Consumable Products" in the *Daily Use* guide for details.

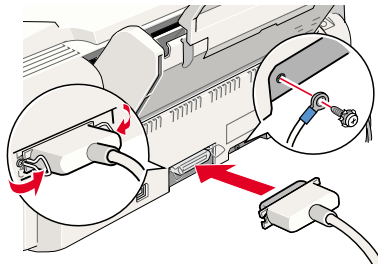
**Note:**

*In order to connect your PC via the USB interface, your computer must be a Windows 98 preinstalled model which is equipped with a USB port.*

### **Using a parallel interface for PCs**

To connect the printer to your PC, you need a shielded, twisted-pair parallel cable.

1. Make sure both the printer and computer are turned off.
2. Plug the cable connector securely into the printer's interface connector. Then squeeze the wire clips together until they lock in place on both sides. If your cable has a ground wire, connect it to the ground connector below the interface connector.

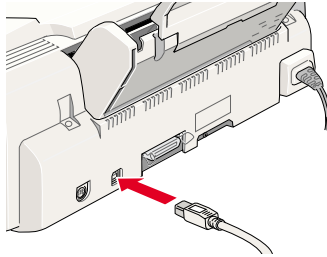


3. Plug the other end of the cable into the computer's parallel interface. If there is a ground wire at the computer end of the cable, connect it to the ground connector at the back of the computer.

## Using a USB interface for PCs and Macintosh

To connect the printer to a USB port, you need a standard shielded USB cable. Follow these steps.

1. Make sure both the printer and computer are turned off.
2. Plug the appropriate end of the cable into the USB port on the back of the printer. (The end that fits the printer has a different shape from the end that fits the computer.)



3. Connect the other end of the cable to the computer's USB port.

# 4

## Installing the Printer Software

After connecting the printer to your computer, you need to install the software included on the "Printer Software for EPSON Stylus COLOR 670" CD-ROM shipped with your printer.

Your printer software includes:

- Printer driver and utilities  
The printer driver runs, or "drives," your printer; use it to make settings such as print quality, speed, media type, and paper size. The Nozzle Check, Head Cleaning, and Print Head Alignment utilities help you keep your printer in top operating condition. EPSON Status Monitor 3 (for Windows) or EPSON StatusMonitor (for Macintosh) notifies you of printer errors and displays printer status information such as the amount of ink remaining. The Status Monitor also guides you through the ink replacement process.
- Online guides  
The online *Reference Guide* and *Color Guide* help you learn more about your printer and color printing.

If you are using the floppy disk version of the software, make a backup copy of the EPSON printer software disk before you begin installation. If you wish to make a floppy disk version of the printer software on your CD-ROM, you can use the driver disk creation utility included on the CD.

## Installing in Windows

Follow these steps to install your printer software.

1. Make sure that your printer is off.
2. Turn on your computer and start Windows. If the New Hardware Found screen or any other Wizard appears, click Cancel.
3. Insert the printer software CD shipped with your printer in the CD-ROM drive. The Installer dialog box appears. (For floppy disk users, insert the disk in a disk drive and double-click the My Computer icon, then the floppy disk drive icon, and then Setup.exe.)
4. Double-click Install Printer Driver/Utility, then click OK in the dialog box that appears to start the printer software installation.



5. Follow the on-screen instructions to turn on your printer.  
For Windows 98 users, the printer port configuration starts automatically.  
For printers connected via USB cable, the USB device driver installation starts automatically at this point. A message will appear asking you to restart your computer. Follow this instruction.
6. After turning on the printer, the Setup utility opens automatically.



**Note:**

If the Setup utility does not start, go to step 5 to install the ink cartridge using the printer's control panel.

7. When a message appears informing you that the installation is complete, click OK.

**Note:**

If an error message appears, either the printer driver or the EPSON USB printer device driver is not installed correctly. See "Troubleshooting" in the Daily Use guide.

After the setup is complete, go to step 7 to print your first page.

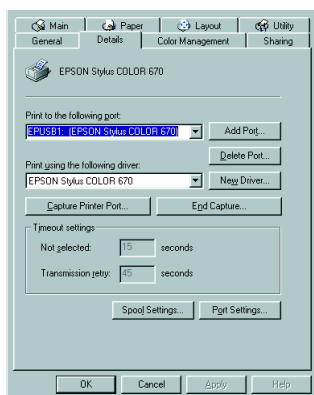
### **Ensuring that the USB driver is installed correctly in Windows**

Follow the directions below to confirm that the USB driver is installed correctly.

1. Click the Start button, point to Settings, and click Printers. Make sure that the icon for your printer appears in the Printers window.
2. Click the icon for your printer, then click Properties on the File menu.



3. Click the Details tab and make sure that EPUSBx: (EPSON Stylus COLOR 670) is displayed in the Print to the following port list box.



**Note:**

*If the correct port is not displayed, refer to the "Troubleshooting" section of the Daily Use guide or the Online Guide.*

## Installing in Macintosh

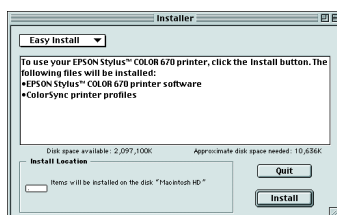


**Caution:**

*Turn off all virus protection programs before you install your printer software.*

Follow these steps to install your printer software.

1. Turn on your Macintosh and insert the software CD in the CD-ROM drive. The EPSON printer software disk opens automatically.
2. If a single Installer icon appears, double-click the icon. If separate folders containing installer icons for several languages appear, double-click the folder for your preferred language, then double-click the Installer icon inside it.
3. At the initial screen, click Continue. The following dialog box appears.

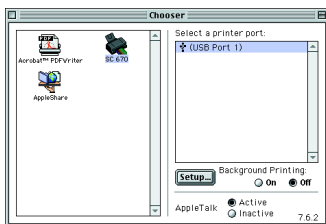


4. To install the printer software included on your printer software CD-ROM, make sure the Install Location box displays the correct disk drive, then click Install.
5. When a message appears informing you that the installation is complete, click Restart to restart your computer.

## Selecting your printer in the Chooser for Macintosh

After you have installed the printer software on your Macintosh, you need to open the Chooser and select your printer. You must select a printer the first time you use it or whenever you want to switch to another printer. Your Macintosh will always print using the last printer selected.

1. Choose Chooser from the Apple menu. Then click your printer's icon and the port your printer is connected to.



2. Select the appropriate Background Printing radio button to turn background printing on or off.  
When background printing is on, you can use your Macintosh while it is preparing a document for printing. In order to use the EPSON Monitor3 utility to manage print jobs, background printing must be turned on.
3. Close the Chooser.

# 5

## Installing the Ink Cartridges

### *Using the Setup utility for Windows*

If you have Windows 95, 98, or NT 4.0 installed on your computer, the Setup utility should open automatically when your printer software installation is complete.

Macintosh users, please refer to the following section.

### *Using the printer's control panel*

When you can not access the setup utility, use the printer's control panel to install the ink cartridges.

Before installing the ink cartridges, note the following.



#### **Warning:**

*The ink cartridges are self-contained units. Under ordinary use, ink will not leak from a cartridge. If ink does get on your hands, wash them thoroughly with soap and water. If ink gets into your eyes, flush them immediately with water.*

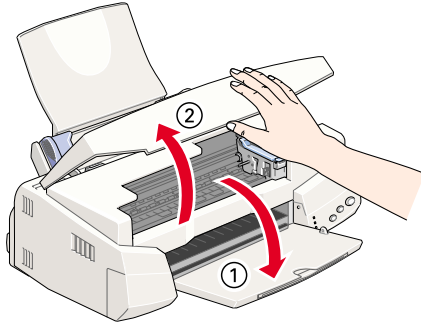



**Note:**




*Do not open the ink cartridge packages until just before you install them, or the ink may dry up.*

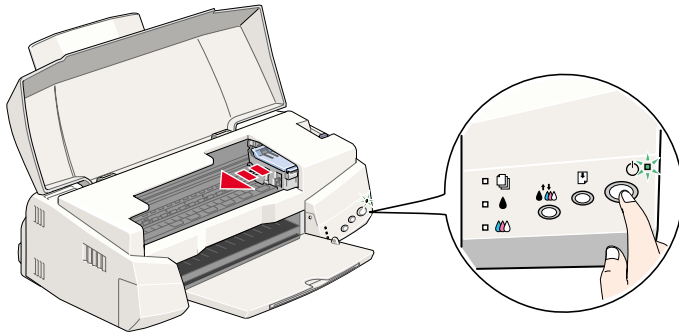
Install the ink cartridges as follows:

1. Lower the output tray; then open the printer cover.



2. Turn on the printer by pressing the  power button.

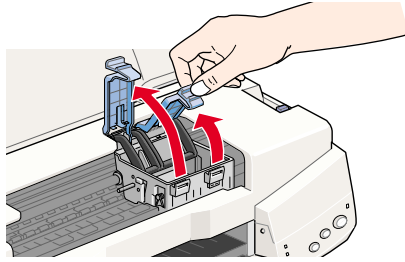
The print head moves to the left, which is the ink cartridge installation position. The  power light flashes and the  and  ink out lights come on.



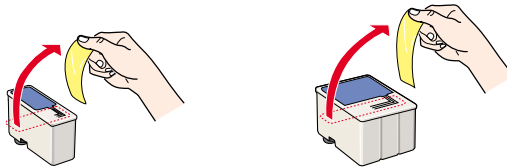
**Caution:**

*Do not move the print head by hand. Otherwise you may damage the printer.*

3. Push back the release tabs and lift up the ink cartridge clamps.

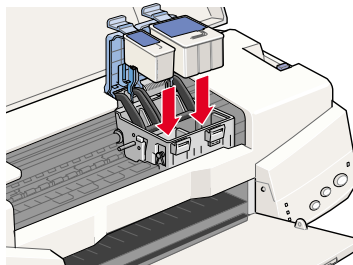


4. Open the ink cartridge packages. Next, remove only the yellow tape seals from each cartridge.



**Caution:**

- ❑ *You must remove the yellow tape seals from the cartridges before installing them; otherwise, a fatal error will occur and the cartridges will become unusable.*
  - ❑ *Do not remove the blue portion of the tape seals from the cartridges; otherwise, the cartridges may become clogged and unable to print.*
  - ❑ *Do not remove the tape seals from the bottom of the cartridges; otherwise, ink will leak.*
5. Place the cartridges gently into their holders with the labels facing up. The color ink cartridge, which is larger, goes on the right and the black ink cartridge goes on the left. Do not press down on the cartridges.



**Note:**


*Install both ink cartridges. If either of the cartridges is not installed, the printer will not work.*

6. Press the ink cartridge clamps down until they lock in place.



**Caution:**

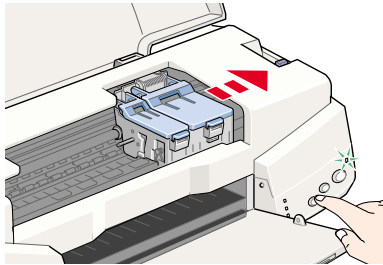
*Once you install the ink cartridges, do not open their clamps again until you replace the ink cartridges; otherwise, the cartridges may become unusable.*


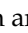
7. Press the  cleaning button. The printer moves the print head and begins charging the ink delivery system. This process takes about one and a half minutes.



**Caution:**

*Always press the  cleaning button to move the print head. Do not move the print head by hand. Doing so may damage the printer.*



While the ink is charging, the  power light flashes and the printer produces a variety of mechanical sounds. These sounds are normal. When the ink delivery system has been charged, the print head returns to its home (far right) position and the  power light comes on.



**Caution:**

*Never turn off the printer while the  power light is flashing.*

8. Close the printer cover.

# 6

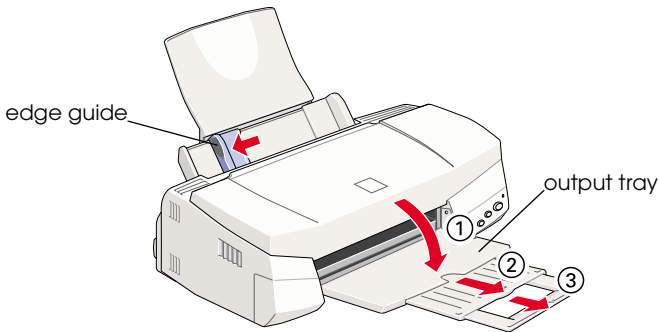
## Checking the Printer

Before printing your first page, you need to make sure the printer is working correctly by printing a nozzle check page and, if necessary, cleaning the print head.

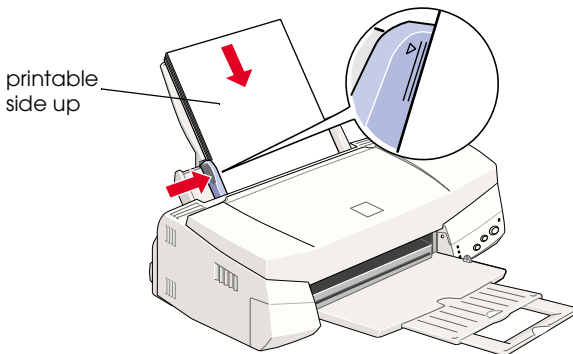
### Loading paper

Follow these steps to load plain paper in the printer.

1. Lower the output tray and slide out the extension. Next, slide the left edge guide so that the distance between the edge guides is slightly wider than the width of your paper.




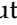
2. Fan a stack of paper, then tap it on a flat surface to even the edges.
3. Load the stack of paper in the sheet feeder with the printable side up and the right edge of the paper resting against the right edge guide. Then slide the left edge guide against the left edge of the paper.

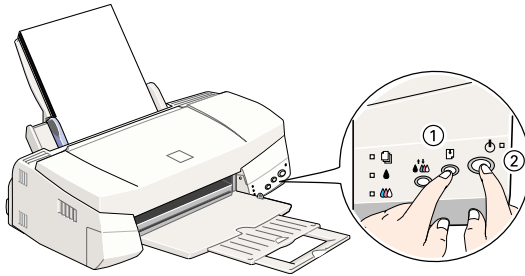


#### **Note:**

- Always load paper into the sheet feeder short edge first.
- Make sure the paper stack fits under the arrow mark inside the edge guide.

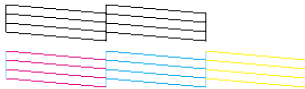
## Checking the print head nozzles

Make sure that the printer is turned off. Hold down the  load/eject button (① in the illustration below) and press the  power button (② in the illustration below) to turn on the printer. Then release both buttons.

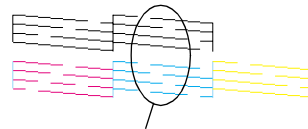


Here are sample printouts.

Good Sample



Print head Needs to be cleaned.


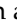




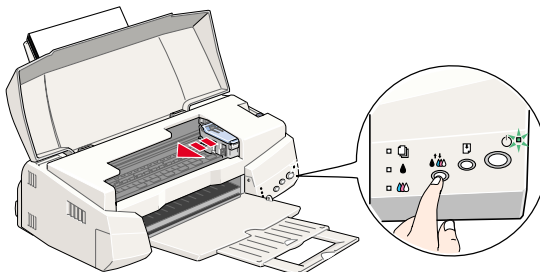
segments are missing

If the nozzle check page does not print satisfactorily (for example, if any segment of the printed lines is missing), then you should clean the print head as explained below. If the printout is satisfactory, you are ready to print your first page. See “Printing Your First Page” for instructions.

## Cleaning the print head

Follow the steps below to clean the print head.

1. Make sure that the  power light is on and that both the  black and  color ink out lights are off.
2. Hold down the  cleaning button for three seconds.



The printer starts cleaning the print head and the ⏻ power light begins flashing. Print head cleaning takes about thirty seconds to complete.



**Caution:**

*Never turn off the printer while the ⏻ power light is flashing. Doing so may damage the printer.*

3. When the ⏻ power light stops flashing, print a nozzle check pattern to confirm that the head is clean and to reset the cleaning cycle.

If print quality hasn't improved after repeating the nozzle checking and cleaning procedures four or five times, contact your dealer.



## Printing Your First Page

After making sure your printer is operating correctly, you are ready to print your first page. To familiarize yourself with the printer software, we recommend printing one of the sample files provided with your printer software. To print a sample file, follow the instructions for Windows or Macintosh in this section.

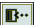
If you choose to print your own document instead, open the document in your application, then proceed to step 4 in the relevant section below, making changes where appropriate.

**Note:**

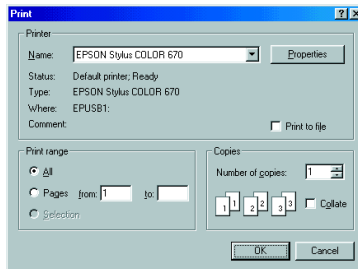
- ❑ *See your software manual for details on how to use your application software.*
- ❑ *Depending on the type of document you are printing and the type of paper you are using, you may have to make settings different from those described in this section.*

### For Windows

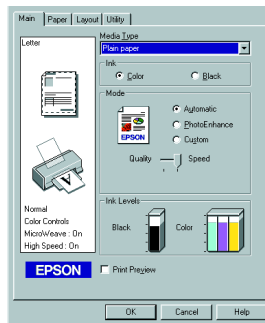
Follow these steps to print the sample file.

1. Make sure A4 or Letter size EPSON Photo Quality Ink Jet Paper is loaded in the printer.
2. Insert the printer driver CD-ROM. If the Installer dialog box appears, click .
3. Double-click the My Computer icon and then the CD-ROM icon. Then double-click the sample.bmp file to open it.

4. To change the printer driver settings, open the File menu and click Print. A Print dialog box similar to the one below opens. (This example is from Paint).



5. Make sure your printer is selected in the Name list box, then click Properties. The printer driver opens.



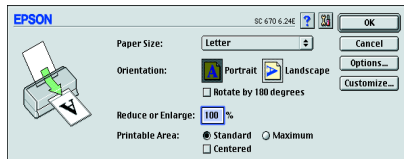
6. Click the Main tab, then click anywhere in the Media Type box and select Photo Quality Ink Jet Paper.
7. Select Color as the Ink setting.
8. Make sure Automatic is selected as the Mode setting. When Automatic is selected, the printer software optimizes other settings according to the Media Type and Ink settings you make.
9. Click the Paper tab, then click anywhere in the Paper Size box and select the paper size you loaded in the printer.
10. Click OK at the bottom of the printer driver window. You return to the Print dialog box (or a similar dialog box).
11. Click Close, Print, or OK to print. You may need to click a combination of these buttons.


While printing, the EPSON Progress Meter will appear, showing the printing progress and the status of your printer.

## For Macintosh

Follow these steps to print the sample file.

1. Make sure A4 or Letter size paper is loaded in the printer.
2. Insert the printer software CD.
3. Open the EPSON folder and double-click the README file.
4. Choose Page Setup from the File menu. The following dialog box appears.

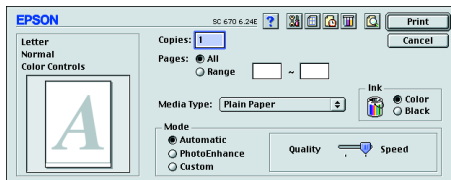


5. Select the paper size you loaded in the printer from the Paper Size list.
6. Select  Portrait as the Orientation setting.
7. After making your settings, click OK to close the Page Setup dialog box.

### **Note:**

*You cannot print from the Page Setup dialog box. You can only print from the Print dialog box.*

8. Choose Print from the File menu. The Print dialog box appears.



9. Select Plain Paper from the Media Type list.
10. Select Color as the Ink option.
11. Make sure Automatic is selected as the Mode setting.
12. When Automatic is selected, the printer software optimizes other settings according to the Media Type and Ink settings you make.
13. Click Print to start printing.