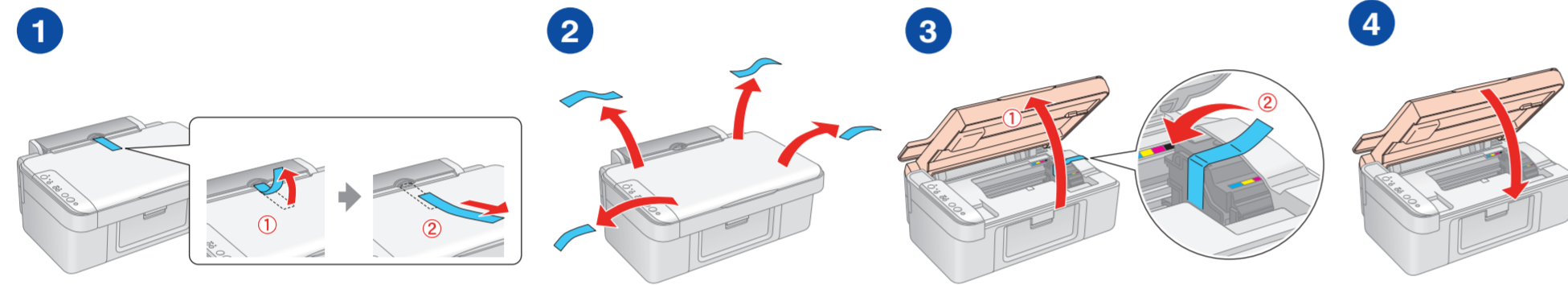
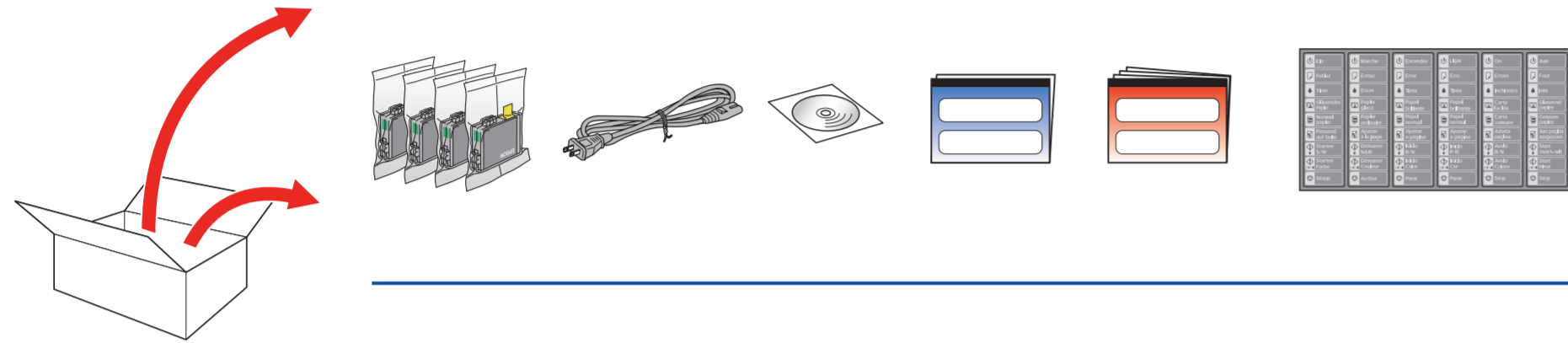


EPSON STYLUS™ DX4000 / DX4050 / CX3900 Series

Start Here • Buradan Başlayın • Ξεκινήστε εδώ

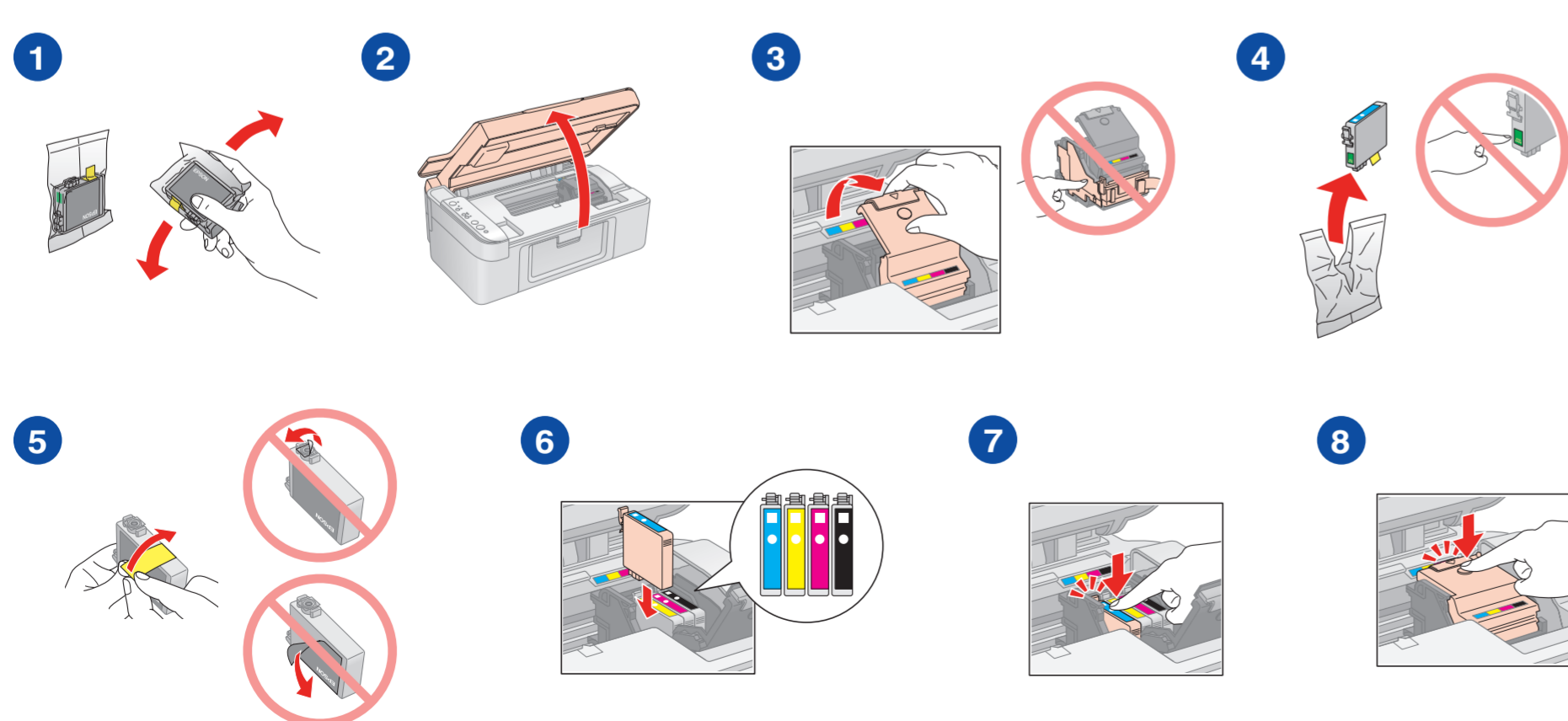
1.



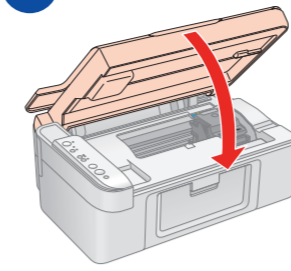
2.



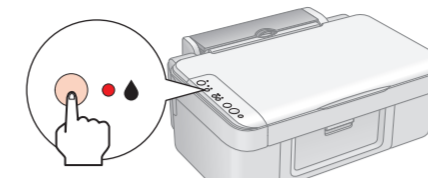
3.



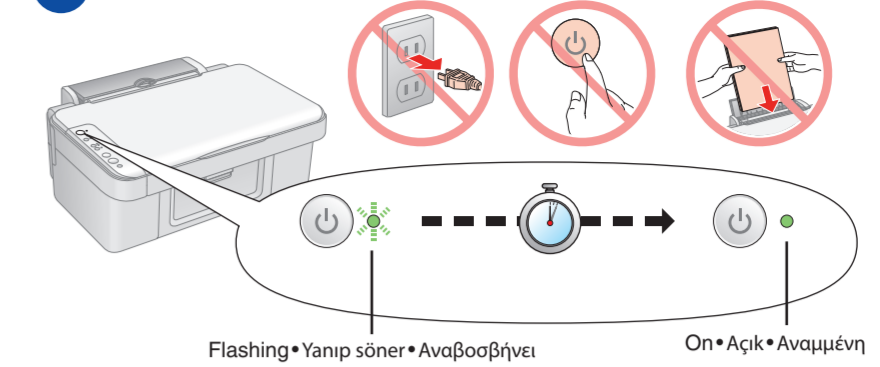
9



10



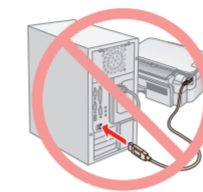
11



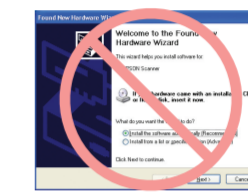
Wait about 1.5 min
Yaklaşık 1,5 dak. bekleyin
Περιμένετε περίπου 1,5 λεπτά

Note: The ink cartridges first installed in your Epson Stylus will be partly used to charge the print head. Subsequent ink cartridges will last for their full rated life.
Not: EPSON Stylus'inize ilk takılan mürekkep kartuşlarının bir kısmı yazdırma kafasını doldurmak için kullanılacaktır. Sonrakı mürekkep kartuşları tam hizmet ömürleri boyunca kullanılabileceklerdir.
Σημείωση: Τα δοχεία μελανιού που είναι ήδη εγκατεστημένα στον Epson Stylus θα χρησιμοποιηθούν εν μέρει για την πλήρωση της κεφαλής εκτύπωσης. Τα επόμενα δοχεία μελανιού που θα τοποθετήσετε θα διαρκέσουν για την πλήρη ονομαστική διάρκεια ζωής τους.

4.

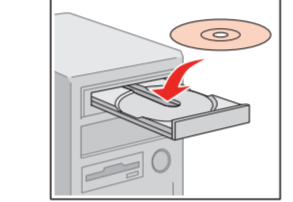


Do not connect the USB cable until you are instructed to do so.
Sizden istenene dek USB kablosunu bağlamayın.
Μην συνδέετε το καλώδιο USB εάν δεν εμφανιστεί η αντίστοιχη οδηγία.



If this screen appears, click **Cancel**.
Bu ekran görünürse, **Cancel** (İptal) üzerine tıklayın.
Εάν εμφανιστεί αυτή η οθόνη, κάντε κλικ στο **Cancel** (Άκυρο).

1



Windows
Mac OS X

2

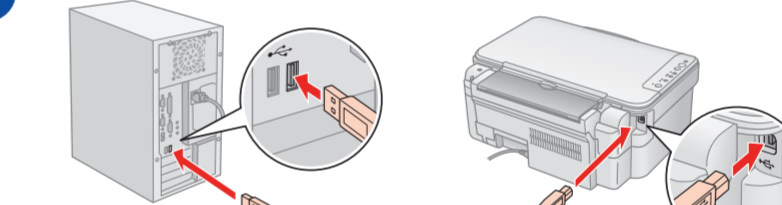


Windows
No installation screen? →
Kurulum ekranı yok mu? →
Δεν εμφανίζεται η οθόνη εγκατάστασης? →

3



4



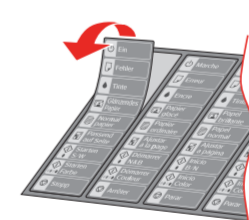
5



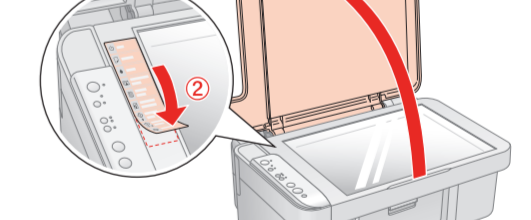
1



2



3



Getting More Information • Daha Fazla Bilgi Edinme • Περισσότερες πληροφορίες

