

User's Guide

-for use without a computer-



Introduction

Important Safety Instructions3
 Copyright Notice4



Guide to Parts and Control Panel Functions

Parts5
 Control Panel6



Handling Paper

Selecting Paper7
 Loading Paper8



Handling a CD/DVD

Loading a CD/DVD9
 Ejecting the CD/DVD Tray10
 Adjusting the Print Position10



Copying

Placing Originals on the Document Table11
 Copying Originals.....12
 Reprinting Photos15
 Copying onto a CD/DVD.....18



Printing from a Memory Card

Handling a Memory Card19
 Checking Photos on a Memory Card.....21
 Printing Photos21
 Selecting and Printing Photos Using an Index Sheet26
 Making an Original CD/DVD.....28
 Printing Stored Photos30



Printing from a Digital Camera/Mobile Phone/PDA

From a Digital Camera32
 From a Mobile Phone.....33



Saving to a Memory Card

Scanning a Photo / Document 34



Maintenance

Replacing Ink Cartridges 35
 Checking and Cleaning the Print Head 38
 Aligning the Print Head 39
 Changing the Language Displayed on the LCD Screen..... 39
 Setting the Screen Saver 39
 Restoring Default Settings 39
 Cleaning This Product 40
 Transporting This Product 40



Solving Problems

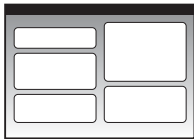
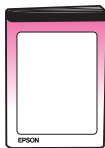


Error Messages 41
 Problems and Solutions 41
 Contacting Customer Support 44



Summary of Panel Settings

◆ Copy mode 45
 ◆ Memory Card mode..... 45
 ✎ Specialty Print mode..... 46
 ⚙ Setup mode 47

Where to Find Information

Paper manuals	
	Start Here <p>Be sure to read this sheet first. This sheet tells you how to set up the product and install the software. It also includes instructions on loading paper and placing originals.</p>
(this book) 	User's Guide -for use without a computer- <p>This book provides information on using the product without connecting to your computer, such as instructions on copying, printing from a memory card, and printing on a CD/DVD.</p> <p>If you have problems using the product, see the Solving Problems chapter in this book.</p>
Online manuals	
	User's Guide <p>This guide provides instructions for printing and scanning from your computer and information on the software.</p> <p>This guide is included in the software CD-ROM and installed automatically when you installed the software. To read this guide, double-click the icon on your desktop.</p>
	Online help <p>Online help is built in each application included on the software CD-ROM. It provides detailed information on the application.</p>

Important Safety Instructions

Before using this product, read and follow these safety instructions:

- Use only the power cord that comes with the product. Use of another cord may cause fire or shock. Do not use the cord with any other equipment.
- Make sure the power cord meets all relevant local safety standards.
- Use only the type of power source indicated on the label.
- Place the product near a wall outlet where the power cord can be easily unplugged.
- Do not let the power cord become damaged or frayed.
- If you use an extension cord with the product, make sure the total ampere rating of the devices plugged into the extension cord does not exceed the cord's ampere rating. Also, make sure the total ampere rating of all devices plugged into the wall outlet does not exceed the wall outlet's ampere rating.
- Avoid locations that are subject to rapid changes in heat or humidity, shocks or vibrations, or dust.
- Leave enough room around the product for sufficient ventilation. Do not block or cover openings in the case or insert objects through the slots.
- Do not place the product near a radiator or heating vent or in direct sunlight.
- Place the product on a flat, stable surface that extends beyond its base in all directions. It will not operate properly if it is tilted or at an angle.
- Make sure the back of the product is at least 10 cm away from the wall.
- Do not open the scanner unit while copying, printing, or scanning.
- Do not spill liquid on the product.
- Do not use aerosol products that contain flammable gases inside or around the product. Doing so may cause fire.
- Except as specifically explained in your documentation, do not attempt to service the product yourself.
- Unplug the product and refer servicing to qualified service personnel under the following conditions: if the power cord or plug is damaged; if liquid has entered the product; if the product has been dropped or the case damaged; if the product does not operate normally or exhibits a distinct change in performance. Adjust only those controls that are covered by the operating instructions.
- When storing or transporting the product, do not tilt it, stand it on its side, or turn it upside down; otherwise ink may leak from the cartridge.
- Be careful not to trap your fingers when closing the scanner unit.

Ink cartridge safety instructions

- Keep ink cartridges out of the reach of children and do not drink the ink.
- Be careful when you handle used ink cartridges; there may be ink remaining around the ink supply port. If ink gets on your skin, wash it off with soap and water. If it gets in your eyes, flush them immediately with water. If you still have discomfort or vision problems, see a doctor immediately.
- Do not put your hand inside the product or touch any cartridges during printing.
- Do not shake cartridges, as this might cause leakage.
- Install a new ink cartridge immediately after you remove an expended cartridge. Leaving cartridges uninstalled can dehydrate the print head and may prevent the product from printing.
- If you remove an ink cartridge for later use, protect the ink supply area from dirt and dust and store it in the same environment as the product. Note that there is a valve in the ink supply port, making covers or plugs unnecessary, but care is needed to prevent the ink from staining items that the cartridge touches. Do not touch the ink cartridge, ink supply port, or surrounding area.

Warnings, Cautions, and Notes

Follow these guidelines as you read your instructions:

Warning:

Warnings must be followed carefully to avoid bodily injury.

Caution:

Cautions must be observed to avoid damage to your equipment.

Note:

Notes contain important information about the product.

Tip:

Tips contain hints for using the product.

Copyright Notice

No part of this publication may be reproduced, stored in a retrieval system, or transmitted in any form or by any means, electronic, mechanical, photocopying, recording, or otherwise, without the prior written permission of Seiko Epson Corporation. The information contained herein is designed only for use with this product. Epson is not responsible for any use of this information as applied to other printers.

Neither Seiko Epson Corporation nor its affiliates shall be liable to the purchaser of this product or third parties for damages, losses, costs, or expenses incurred by the purchaser or third parties as a result of accident, misuse, or abuse of this product or unauthorized modifications, repairs, or alterations to this product, or (excluding the U.S.) failure to strictly comply with Seiko Epson Corporation's operating and maintenance instructions.

Seiko Epson Corporation shall not be liable for any damages or problems arising from the use of any options or any consumable products other than those designated as Original Epson Products or Epson Approved Products by Seiko Epson Corporation.

Seiko Epson Corporation shall not be held liable for any damage resulting from electromagnetic interference that occurs from the use of any interface cables other than those designated as Epson Approved Products by Seiko Epson Corporation.

EPSON® is a registered trademark and EPSON STYLUS™ and Exceed Your Vision are trademarks of Seiko Epson Corporation.

PRINT Image Matching™ and the PRINT Image Matching logo are trademarks of Seiko Epson Corporation. Copyright © 2001 Seiko Epson Corporation. All rights reserved.

USB DIRECT-PRINT™ and the USB DIRECT-PRINT logo are trademarks of Seiko Epson Corporation. Copyright © 2002 Seiko Epson Corporation. All rights reserved.

DPOF™ is a trademark of CANON INC., Eastman Kodak Company, Fuji Photo Film Co., Ltd. and Matsushita Electric Industrial Co., Ltd.

SDHC™ is a trademark.

Memory Stick, Memory Stick Duo, Memory Stick PRO, Memory Stick PRO Duo, Magic Gate Memory Stick and Magic Gate Memory Stick Duo are trademarks of Sony Corporation.

xD-Picture Card™ is a trademark of Fuji Photo Film Co., Ltd.

Zip® is a registered trademark of Iomega Corporation.

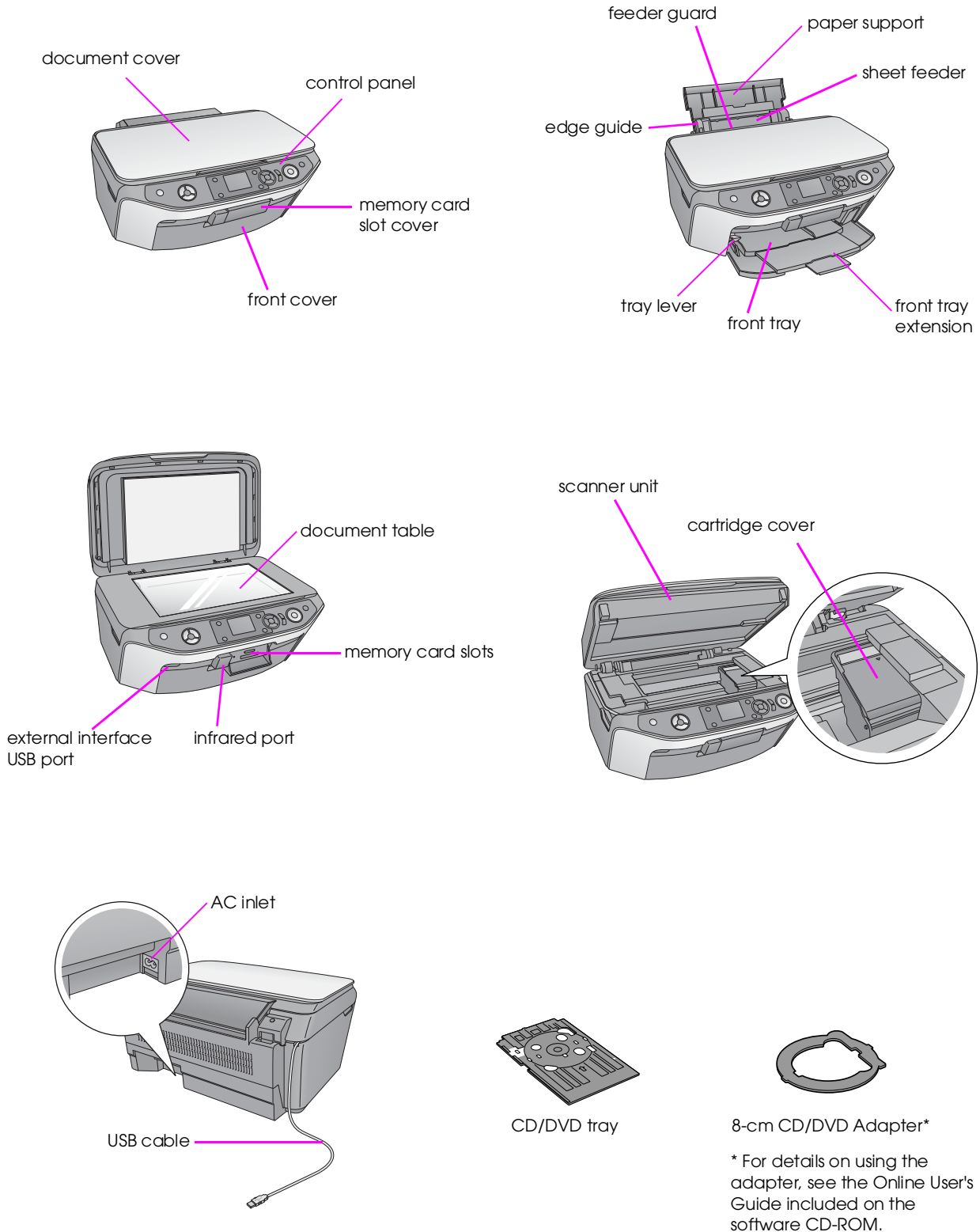
Bluetooth is a trademark of Bluetooth SIG, Inc., U.S.A. and is licensed to Seiko Epson Corporation.

General Notice: Other product names used herein are for identification purposes only and may be trademarks of their respective owners. Epson disclaims any and all rights in those marks.

Copyright © 2006 Seiko Epson Corporation. All rights reserved.

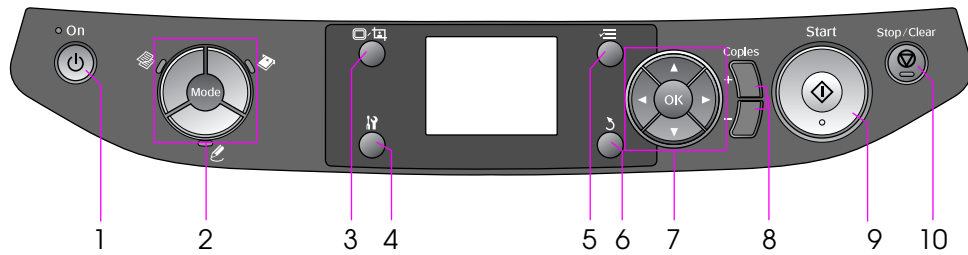
Guide to Parts and Control Panel Functions

Parts

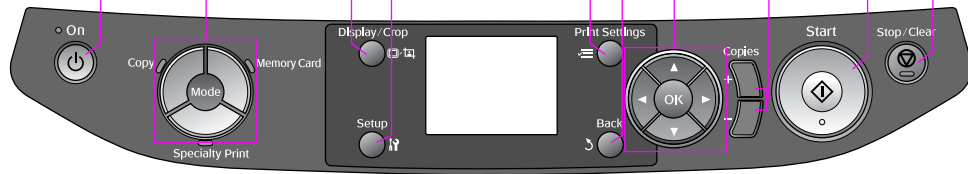


Control Panel

Icon panel



Text panel



Control panel design varies depending on the area where you purchased the product.

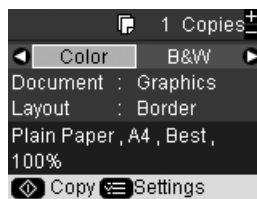
Buttons

Buttons	Function
1 On	Press to turn the product on and off.
2 Mode Copy Memory Card Specialty Print	<p>Press to copy a photo or a document.</p> <p>Press to print photos from a memory card.</p> <p>Press to print on CD/DVDs, make copies or restore faded photos.</p>
3 Display/Crop	Press to change the view of photos on the LCD screen when selecting photos, and press to crop a photo you select.
4 Setup	Press to run maintenance programs or adjust miscellaneous settings.
5 Print Settings	Press to display detailed settings for each mode.

Buttons	Function
6 Back	Press to cancel the current operation on the LCD screen and return to the previous menu.
7 4-way Scroll OK	<p>Press to select menu items.</p> <p>Press to activate the settings you have selected.</p>
8 Copies (+ and -)	Press to set the number of copies, or change the crop area.
9 Start	Press to start copying and printing.
10 Stop/Clear	Press to stop copying and printing, or reset the settings you have made.

LCD screen

The screen displays a preview of the selected images, or displays settings that you can change with the buttons.



If no buttons are pressed for more than three minutes, the product becomes inactive or a slide show begins when **Screen Saver Settings** is set to **Memory Card Data** (→ “Setting the Screen Saver” on page 39).

After 13 minutes of inactivity, the screen turns black to save energy and the LEDs for the mode buttons turn on and off in a clockwise motion.

Press any button (except **On**) to return the screen to its previous state.

Handling Paper

Epson offers an extensive line of special papers that provide outstanding results when used with Epson printers and ink. The type of paper you choose affects the way your printout looks, so be sure to select the correct paper for your job.

Selecting Paper

If you are just making a copy or printing a rough draft of an image, plain paper is fine. However, for the best results, you will want to use one of Epson's special ink jet papers designed for the product.

Before printing, you need to select the correct Paper Type setting on the LCD screen. This important setting determines how the ink is applied to the paper.

Choose from these paper types and settings:

Paper type	Size	Paper type setting	Loading capacity
Plain paper *1	A4	Plain Paper	12 mm
	A5 *2		
Epson Bright White Paper	A4		80 sheets
Epson Premium Ink Jet Plain Paper	A4	100 sheets	
Epson Matte Paper Heavyweight	A4	Matte	20 sheets
	A4		100 sheets
Epson Premium Glossy Photo Paper	10 × 15 cm (4 × 6 in.)	Prem.Glossy	20 sheets
	13 × 18 cm (5 × 7 in.)		
Epson Premium Semigloss Photo Paper	A4		
Epson Ultra Glossy Photo Paper	10 × 15 cm (4 × 6 in.)	Ultra Glossy	20 sheets
	13 × 18 cm (5 × 7 in.)		
Epson Glossy Photo Paper	A4		
Epson Photo Stickers 16 *3	A6	Photo Stickers	1 sheet
	A6		

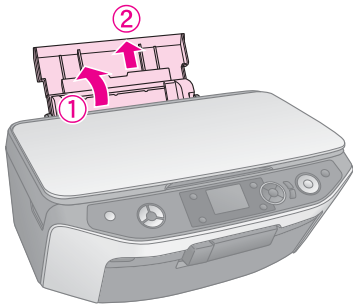
*1 You can use paper with a weight of 64 to 90 g/m².

*2 This paper size is only available in Copy mode.

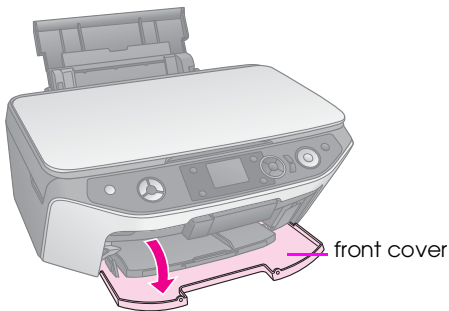
*3 This paper size or type is only available when making prints from your memory card, digital camera, or mobile phone.

Loading Paper

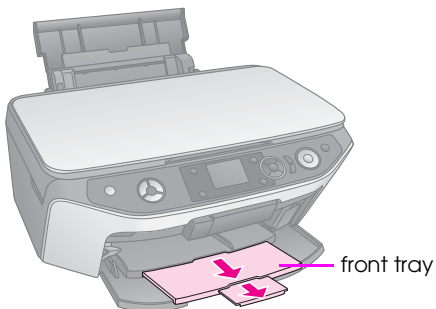
1. Open and extend the paper support.



2. Open the front cover.

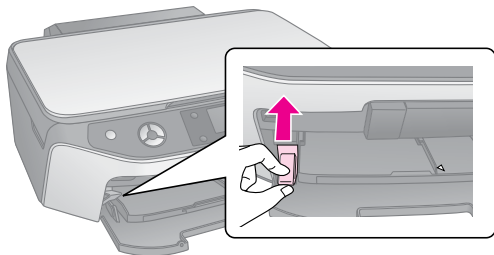


3. Slide out the front tray.

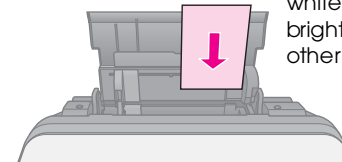
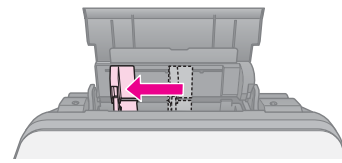


Note:

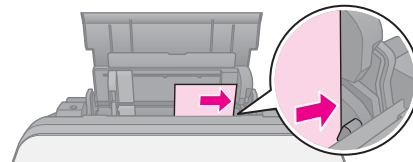
Make sure the front tray is in the paper position (lower position). If it is not, move the tray lever up and reposition the front tray.



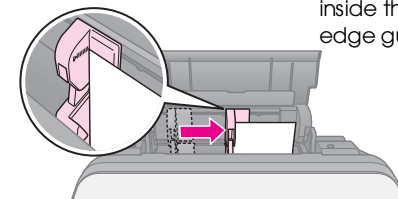
4. Set the paper as shown in the following illustrations.



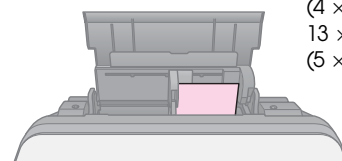
The printable side is often whiter or brighter than the other side.



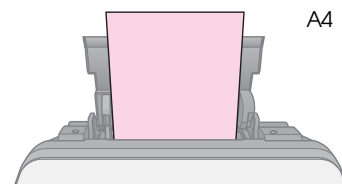
place behind the tabs



make sure it fits under the arrow inside the left edge guide



10 × 15 cm
(4 × 6 in.) and
13 × 18 cm
(5 × 7 in.)



A4

Note:

Make sure you do not load more than the recommended number of sheets. Check the Paper Type setting before printing to make sure it matches the type of paper you have loaded (➔ "Selecting Paper" on page 7).

Handling a CD/DVD

You can print directly on any ink jet printable CD/DVD using the CD/DVD tray.

Caution:

You cannot print on thermal-printable CD/DVDs.

Tip:

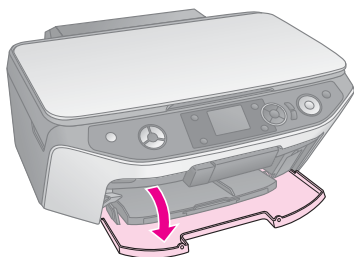
To print on 8-cm mini CDs, use the EPSON Print CD included in the software CD-ROM. See the instructions in your on-screen *User's Guide*.

Loading a CD/DVD

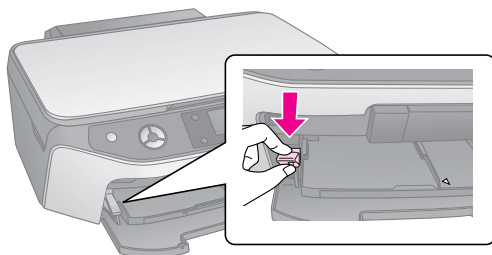
Note:

- ❑ Make sure the data, music, or video is burned on your ink jet printable CD/DVDs before you print. Otherwise, dirt or scratches on the surface may cause errors when you burn the data.
- ❑ If you plan to print large numbers of CD/DVDs, it is a good idea to print a small sample, then wait a day and check the quality to make sure it is satisfactory.

1. Turn on the product and open the front cover.



2. Move the tray lever down until the front tray is lifted to the CD/DVD position (upper position).



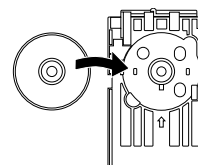
Caution

- ❑ Do not touch the front tray when operating the tray lever.
- ❑ Do not move the tray lever while the product is operating.

Note:

Before you move the tray lever, make sure the front tray is not extended and no paper or other objects are on the front tray.

3. Place your CD/DVD on the CD/DVD tray with the label surface up. (Make sure the surface is clean.)



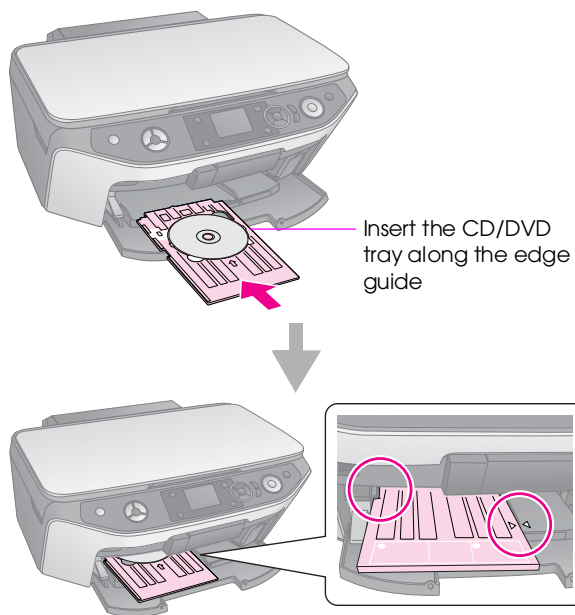
Note:

Use the CD/DVD tray that comes with the product. The tray cannot be used with other products.

4. Insert the tray into the product until the arrow mark on the CD/DVD tray is aligned with the arrow mark on the front tray. Make sure that either edge of the CD/DVD tray is inserted into the brackets on the front tray.

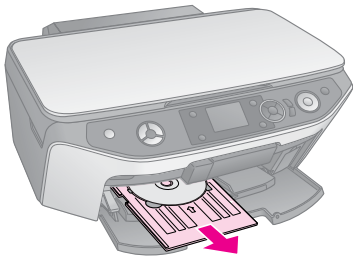
Caution

Do not insert the CD/DVD tray while the product is operating. Otherwise, your product may be damaged or the surface of the CD/DVD may become dirty or scratched.

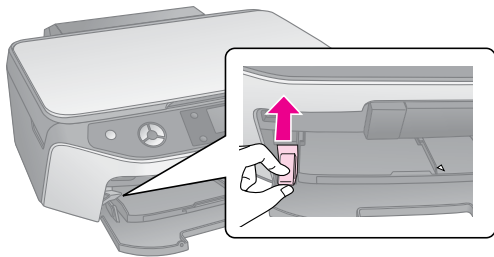


Ejecting the CD/DVD Tray

1. Make sure that printing is finished.
2. Eject the CD/DVD tray by pulling it straight out of the front tray.



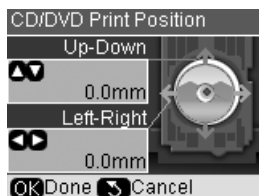
3. Move the tray lever up to reposition the front tray.



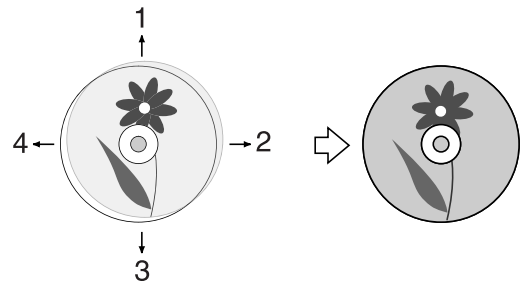
Adjusting the Print Position

If your printed image is not centered on the CD/DVD, you can adjust its printing position.

1. If necessary, print a test sample using an extra CD/DVD.
2. Press the **[Setup]** button.
3. Use the **◀** or **▶** button to select the **Print Position**, and press **OK** to enter this mode.
4. Use the **▲** or **▼** button to select **CD/DVD**.
5. Press the **▶** button, you see a screen like this:



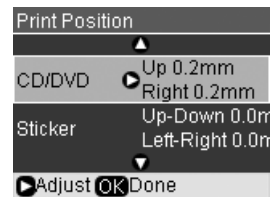
6. Use the **▲** or **▼** button to adjust the **Up-Down** print position, and use the **◀** or **▶** button to adjust the **Left-Right** print position.



1. Move the CD/DVD up
2. Move the CD/DVD right
3. Move the CD/DVD down
4. Move the CD/DVD left

Options	Description
Up-Down	Move the CD/DVD print position up or down. You can adjust it by 0.1 mm from -2 to +2 mm.
Left-Right	Move the CD/DVD print position left or right. You can adjust it by 0.1 mm from -2 to +2 mm.

7. Press the **OK** button to apply the new setting.



Note:

This product retains your settings even after it has been turned off, so you do not need to readjust the printing position each time you print a CD/DVD.

Copying

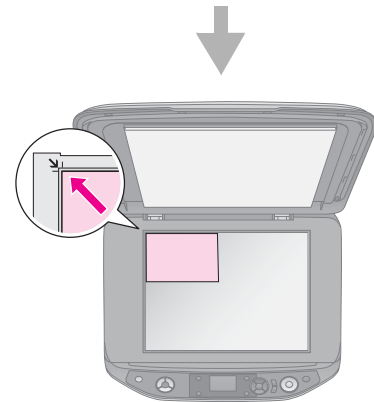
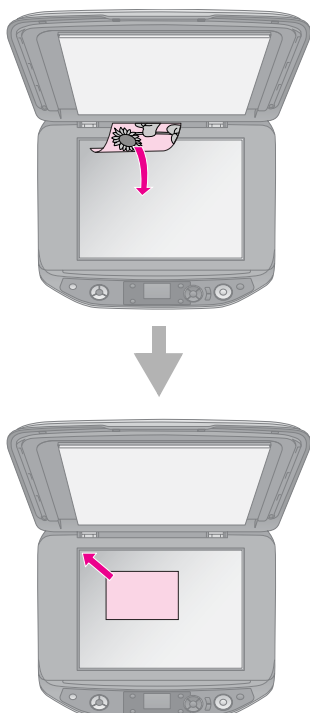
You can copy documents and photos without a computer.

Note the following when copying:

- The copied image may not be exactly the same size as the original.
- Depending on the type of paper used, print quality may decline in the top and bottom areas of the printout, or these areas may be smeared.
- If you see a low ink message while you are copying, you can either continue copying until the ink is expended, or stop and replace the cartridge.
- Keep the document table clean.
- Make sure the document or photo is flat against the document table; otherwise, the copy will be out of focus.
- Do not pull out paper that is being printed; it will be ejected automatically.

Placing Originals on the Document Table

1. Open the document cover and place your original face-down on the document table, in the upper left corner.

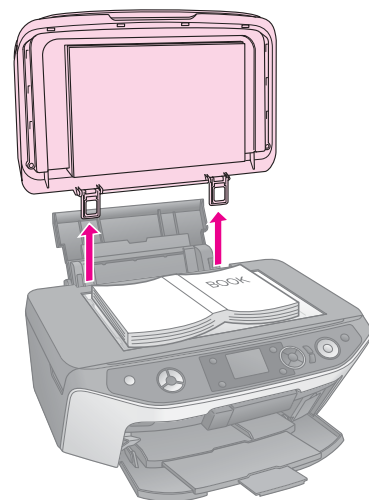


2. Close the cover gently so you do not move the original.

Caution:

Never open the document cover beyond where it stops and do not place heavy objects on top of the product.

If you need to copy a thick or large document, you can remove the document cover. Just open it and pull it straight up.

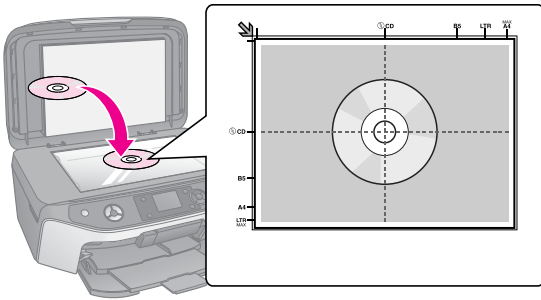


If you need to press the document flat while you copy it, do not press too hard and be careful not to move it.

When you are done, replace the document cover by inserting the tabs back into the slots.

Placing an original CD/DVD

To copy your original CD/DVD label design, place the original CD/DVD in the center of the document table as shown below.



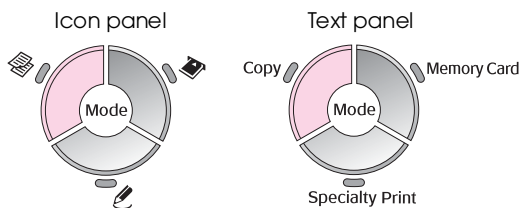
Copying Originals



Tip:

- ❑ Plain photocopier paper works well for making everyday copies. For crisper text and more vivid colors, try one of the special Epson papers (➔ “Selecting Paper” on page 7).
- ❑ You can print long-lasting photos with a professional finish (➔ “Reprinting Photos” on page 15).

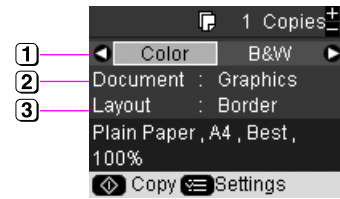
1. Load your paper (➔ page 8).
2. Place your original on the document table (➔ “Placing Originals on the Document Table” on page 11).
3. Press the [Copy] mode button.



Note:

This product retains the last settings you used, so always check them to make sure they are the ones you want.

4. Use the or button to select a menu item and use the or button to select a setting item. Use the **Copies +** or **-** buttons to set the number of copies.

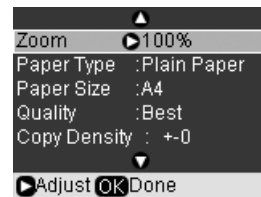


- 1 Select **Color** for color copies or **B&W** for black-and-white copies.
- 2 Select the type of document you want to copy.
- 3 Select a layout option (➔ “Selecting a copy layout” on page 13).

Note:

When **CD/DVD Copy** is selected as the **Layout**, you cannot change the number of copies.

5. Press the [Print Settings] button to change the settings (➔ “Selecting special print settings” on page 13). Then press **OK** to apply the new settings.





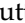

6. Press the **Start** button. Your document is copied.

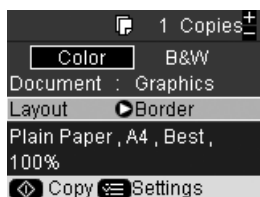
If you need to stop copying, press the **Stop/Clear** button.



Tip:

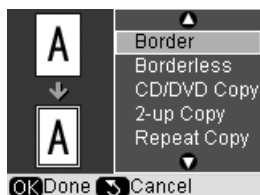
If you need to make your copies lighter or darker, press the [Print Settings] button and adjust the **Copy Density**.

Selecting a copy layout

1. Press the  [Copy] mode button.
2. Use the  or  button to select **Layout**, then press the  button.



3. Use the  or  button to select one of these layout options, then press **OK**.


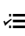
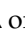




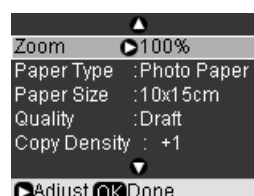
Copy Layout Setting	Result
Border Copies your original with a standard 3-mm margin.	
Borderless* Copies your photo all the way to the edges of the paper.	
CD/DVD Copy Copies your photo onto a CD or DVD label using the Auto Fit Page function (➔ "Copying onto a CD/DVD" on page 18).	
2-up Copy Copies two originals onto one sheet (➔ "Copying 2 Originals on One Sheet" on page 14).	
Repeat Copy Prints a photo at actual size as many times as it will fit on one sheet.	
Repeat-4 Prints a photo four times on one sheet.	



* Borderless copying is available only when you are using Epson photo paper in the sizes listed (➔ "Selecting Paper" on page 7). If you select the **Borderless** layout, your image is slightly enlarged and cropped to fill the sheet of paper. If you notice reduced print quality at the bottom of your print, try using a layout with borders.

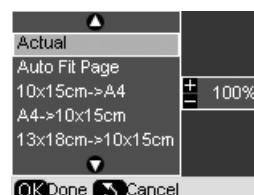
Selecting special print settings

You can choose from various sizes and types of Epson paper and some print settings to get just the results you want.

1. Press the  [Copy] mode button.
2. Press the  [Print Settings] button.
3. Use the  or  button to select a menu item, then press the  button.

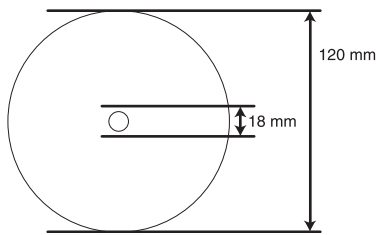


4. Use the  or  button to select a setting item, and then press **OK** to apply the new setting.



Zoom	Select Actual to print your photo at its original size. Select Auto Fit Page for borderless printing and resizing the image to fit various common paper sizes. You can also resize the original to a specific scale using the Copies + or - buttons. button.
Paper Type	Select the paper type you loaded (➔ "Selecting Paper" on page 7).
Paper Size	Select the paper size you loaded.
Quality	Select the quality of the copied documents.
Copy Density	Select the density of copied documents. You can choose from - 4 to + 4.
Expansion	Select the amount the image is expanded when you select Borderless . Standard: No margins are printed. (The image is slightly enlarged and cropped to fill the sheet of paper.) Mid: Low expansion rate. (Margins might be printed.) Min: Lowest expansion rate. (Margins might be printed.)
CD Inner-Outer	Select to resize the print position for the inside and outside diameter of the CD/DVD label. Inner: 18 - 46 mm Outer: 114 - 120 mm

Notice for CD/DVD copying:
The printable area of a CD/DVD is illustrated as follows.

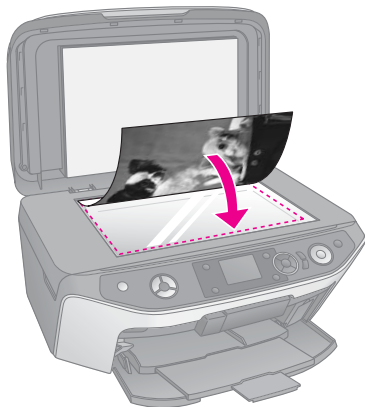


Note:
If you are printing in the following areas of the disc, the disc or the CD/DVD tray may get strained with ink.

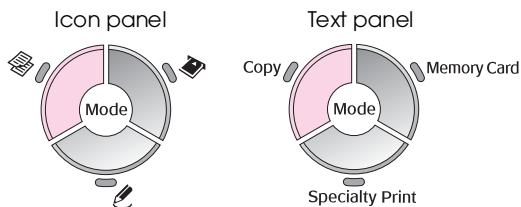
Inner hub area	18 to 42 mm
Outer periphery area	117 to 120 mm

Copying 2 Originals on One Sheet

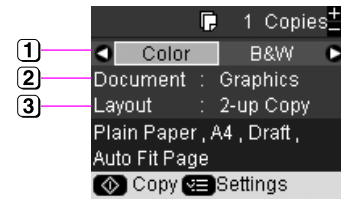
1. Load your paper (➔ page 8).
2. Place the first original on the document table (➔ “Placing Originals on the Document Table” on page 11).



3. Press the [Copy] mode button.



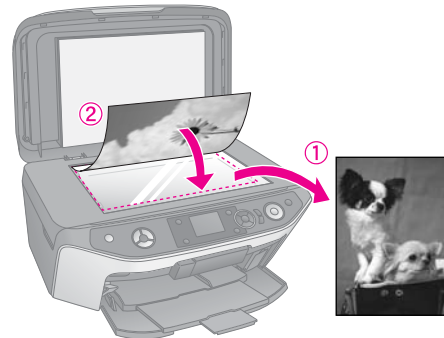
4. Use the ▲ or ▼ button to select a menu item and use the ◀ or ▶ button to select a setting item. Use the **Copies +** or **-** buttons to set the number of copies.



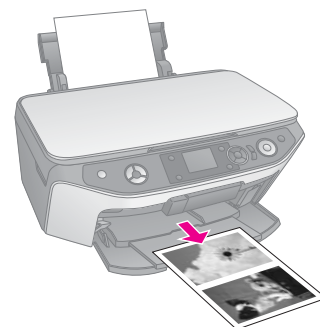
- ① Select **Color** for color copies or **B&W** for black-and-white copies.
- ② Select **Text**, **Graphics**, or **Photo**.
- ③ Select **2-up Copy** to copy two originals per sheet (➔ “Selecting a copy layout” on page 13).

Note:
If you choose **2-up Copy** as the layout setting, but you do not select two originals, a blank space is left on the paper.

5. Press **OK**.
6. Press the [Print Settings] button and change the settings (➔ “Selecting special print settings” on page 13). Then press **OK** to apply the new settings.
7. Press the **Start** button. The first original is scanned and the product starts copying.
8. When the product finishes scanning the first original, place the second original on the document table.

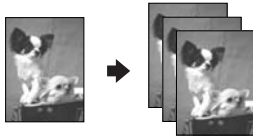


9. Press the **Start** button again. The second original is scanned, and the copy is printed.

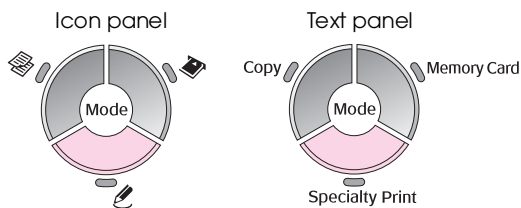


If you need to stop copying, press the **Stop/Clear** button.

Reprinting Photos



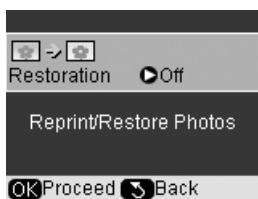
1. Load the photo paper (➔ page 8) you want to print on.
2. Place your photo on the document table (➔ “Placing Originals on the Document Table” on page 11).
3. Press the [**Specialty Print**] mode button.



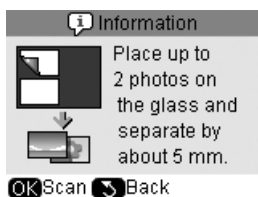
4. Use the ◀ or ▶ button to select **Reprint/Restore Photos**, and then press **OK**.



5. Use the ▶ button to enter the menu. Use the ▲ or ▼ button to select a color restoration setting, then press **OK** (➔ “Restoring color in photos” on page 17).

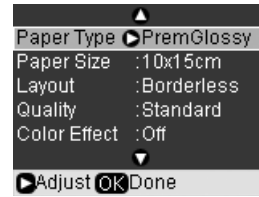


6. Press **OK** again and follow the information displayed on the LCD screen. Press **OK**. Your photo is previewed.



7. Use the **Copies +** or **-** button to select the number of copies (1 to 99).

8. Press the [**Print Settings**] button and change the settings (➔ “Selecting special print settings” on page 17). Then press **OK** to apply the new settings.



9. Press the **Start** button. Your photo is printed.

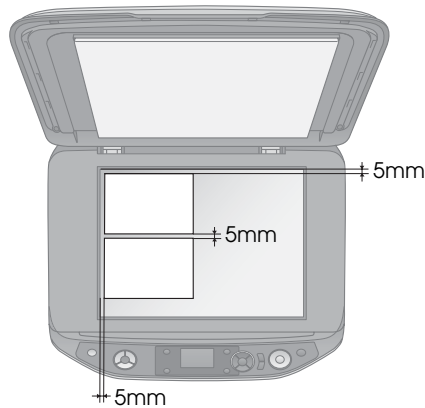
If you need to stop copying, press the **Stop/Clear** button.

Note:

- ❑ If you select the **Borderless** layout, your image is slightly enlarged and cropped to fill the sheet of paper.
- ❑ If the edge of the copy are cropped off, move the original away from the corner slightly.

Copying multiple photos

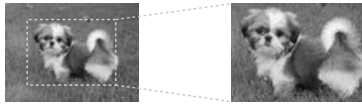
To print several photos at one time, place each photo horizontally as shown in the illustration below.



Note:

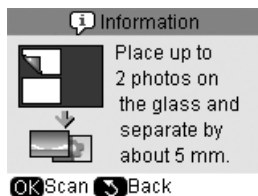
- ❑ You can copy two 10 × 15 cm (4 × 6 in.) size photos at a time. If the edge of the photo is missing after you print, try copying them one at a time.
- ❑ Place your photo 5 mm away from the edge of the document table. Also when you place two photos, position each photo at least 5 mm away from the adjacent photo.
- ❑ You can copy several different sized photos at the same time, as long as they are larger than 30 × 40 mm and all fit inside the 216 × 297 mm area.

Cropping and enlarging a photo



You can crop out the rest of the photo and print just the main subject by itself when you reprint a photo.

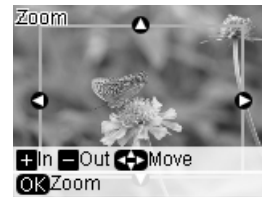
Before you start, follow the instructions on the preceding pages to load the photo paper and place your photos on the document table. And set **Restoration** to **On**, as shown (➔ “Reprinting Photos” on page 15). Then press **OK**. You see the information on the LCD screen.



1. Press **OK**. Your photo is previewed and then displayed on the screen.



2. Press the **Display/Crop** button. You see the cropping screen.



3. Use the **▲**, **▼**, **◀**, and **▶** buttons to move the frame to the center of the area you want to crop. You can also rotate or zoom the image by using buttons indicated at the bottom of the LCD screen.

Buttons	Description
Copies +	Press to reduce the area you want to crop.
Copies -	Press to enlarge the area you want to crop.
4-way scroll	Press to move the frame to the center of the area you want to crop.
OK	Press to enlarge the photo.

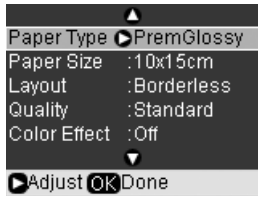
Note:

To readjust the frame's position, press the **Back** button to return to the previous screen.

4. When you have finished framing the photo, press **OK**.
5. Use the **Copies +** or **-** button to select the number of copies (1 to 99).



- Press the [Print Settings] button and change the settings (➔ “Selecting special print settings” on page 17). Then press **OK** to apply the new settings.



- Press the **Start** button. Your photo is printed.

If you need to cancel printing, press the **Stop/Clear** button.

Restoring color in photos

If you have photos that have faded over time, you can bring them back to life with color restoration when you reprint them.

Before you start, follow the instructions on the preceding pages to load photo paper and place your photos on the document table. And set **Restoration** to **On**, as shown (➔ “Reprinting Photos” on page 15).



Note:

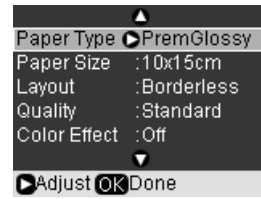
- You can restore color to faded photos up to 10 × 15 cm (4 × 6 in.).
- You can also restore color to photos larger than 10 × 15 cm (4 × 6 in.) when you scan them to your computer. See your on-screen *User's Guide* for details.

Selecting special print settings

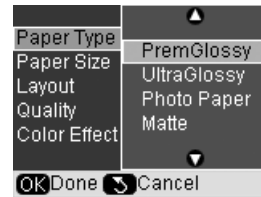
You can choose from various sizes and types of Epson paper and some print settings to get just the results you want.

- Press the [Specialty Print] mode button and follow the instructions on the preceding pages to preview the photo (➔ “Reprinting Photos” on page 15).
- Press the [Print Settings] button.

- Use the or button to select a menu item, then press the button.



- Use the or button to select a setting item, and then press **OK** to apply the new setting.



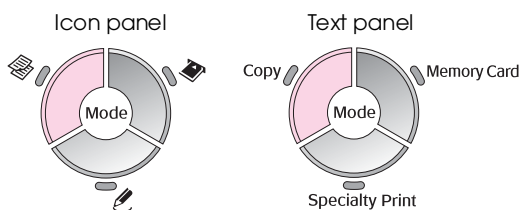
Paper Type	Select the setting for the type of paper you loaded (➔ “Selecting Paper” on page 7).
Paper Size	Select the paper size you loaded.
Layout	Select Borderless to print your photo without white borders at the edges. Otherwise select Border .
Quality	Select the quality of the copied documents.
Expansion	Adjust the amount the image is expanded when you select Borderless . Standard : No margins are printed. (The image is slightly enlarged and cropped to fill the sheet of paper.) Mid :Low expansion rate. (Margins might be printed.) Min :Lowest expansion rate. (Margins might be printed.)
Color Effect	Select B&W to print your photo in black and white.

Copying onto a CD/DVD

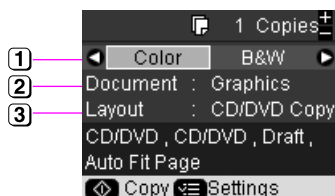


You can copy your colorful designs or photos directly onto a CD/DVD without using your computer.

1. Place your CD/DVD on the CD/DVD tray and insert it into the product (➔ “Loading a CD/DVD” on page 9).
2. Place the original you want to copy on the document table (➔ “Placing Originals on the Document Table” on page 11). The image is automatically cropped and resized to fit on the CD/DVD label.
3. Press the [Copy] mode button.



4. Use the ▲ or ▼ button to select a menu item and use the ◀ or ▶ button to select a setting item.

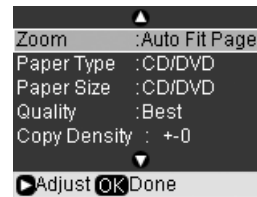


- 1 Select **Color** for color copies or **B&W** for black-and-white copies.
- 2 Select **Text**, **Graphics**, or **Photo**.
- 3 Select **CD/DVD Copy** (➔ “Selecting a copy layout” on page 13).

Note:

When **CD Copy** is selected as the **Layout**, you cannot change the number of copies.

5. Press the [Print Settings] button and change the settings (➔ “Selecting special print settings” on page 13). Then press **OK** to apply the new settings.



Tip:

If you want to check the print output first, select **Plain Paper** as the **Paper Type** setting and load plain paper.

6. Press the **Start** button. Your CD/DVD is printed.

If you need to stop copying, press the **Stop/Clear** button.

7. When printing is complete, pull the tray out of the product (➔ “Ejecting the CD/DVD Tray” on page 10) and let the CD/DVD dry fully before handling it.
8. When you finish printing CD/DVDs, raise the tray lever to return the front tray to its former position (➔ “Ejecting the CD/DVD Tray” on page 10).

Tip:

If ink smears on your printed CD/DVDs, you may need to adjust the ink density. CD/DVDs from different manufacturers absorb ink differently, so you may need to adjust the setting for each brand. After making basic print settings, press the [Print Settings] button. Change the **Copy Density** as needed, then press **OK**.

Printing from a Memory Card

You can print photos directly from your digital camera's memory card. Just insert it into the memory card slot and you are ready to print.

Handling a Memory Card

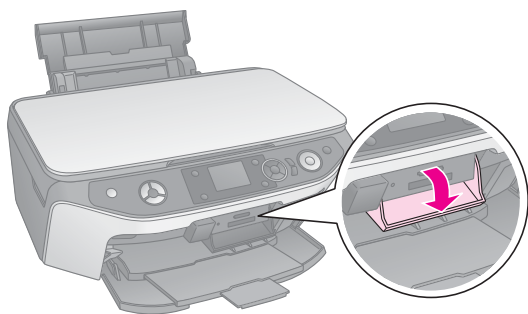
Compatible cards

Make sure your memory card meets the following requirements.

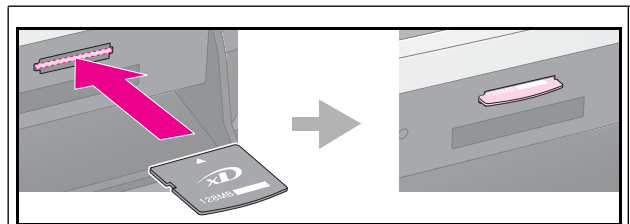
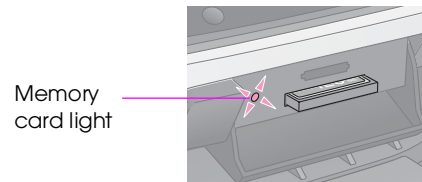
Card type	CompactFlash, Microdrive, SD Memory Card, SDHC Memory Card, MultiMediaCard, miniSD card, miniSDHC card, microSD card, microSDHC card, Memory Stick, Memory Stick PRO, Magic Gate Memory Stick, Magic Gate Memory Stick Duo, Memory Stick Duo, Memory Stick PRO Duo, xD-Picture Card, xD-Picture Card Type M, xD-Picture Card Type H
Media format	DCF (Design rule for Camera File system) version 1.0 or 2.0 compliant All card types standard version compliant.
File format	JPEG with the Exif Version 2.21 standard
Image size	80 × 80 pixels to 9200 × 9200 pixels
Number of files	Up to 999

Inserting a memory card

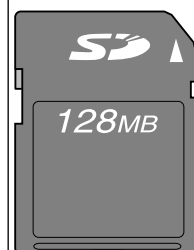
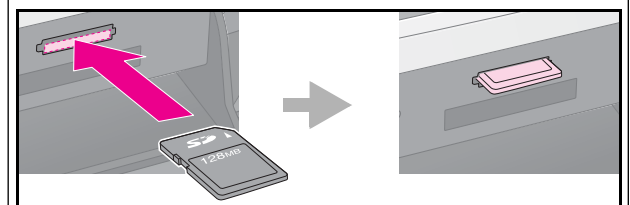
1. Turn off your computer or disconnect it from the product.
2. Make sure the product is turned on.
3. Open the memory card slot cover.



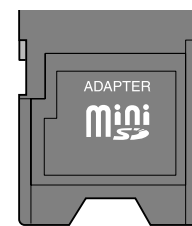
4. Make sure the memory card light is off and no memory cards are in the slots. Then insert your memory card.



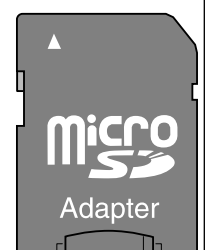
xD-Picture Card
xD-Picture Card Type M
xD-Picture Card Type H



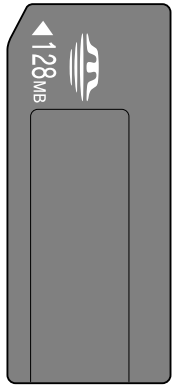
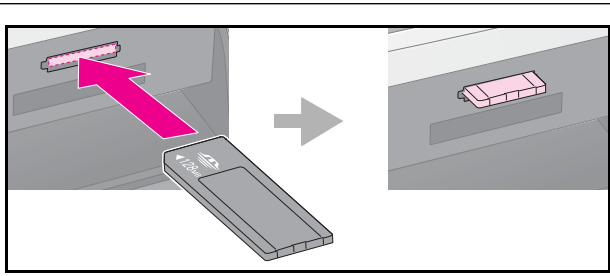
SD Memory Card
SDHC Memory Card
MultiMediaCard



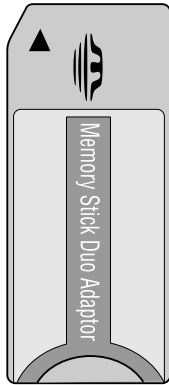
miniSD card*
miniSDHC card*
(* Adapter required)



microSD card*
microSDHC card*

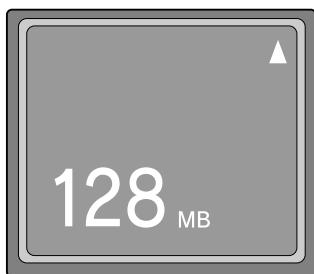
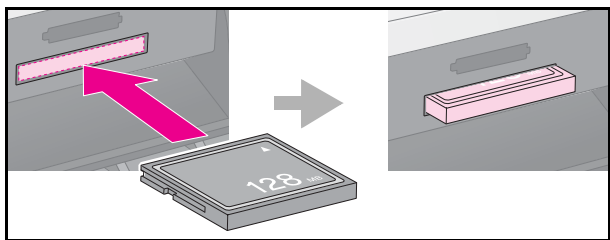


Memory Stick
Memory Stick PRO
MagicGate Memory Stick



Memory Stick Duo*
Memory Stick PRO Duo*
MagicGate Memory Stick Duo*

(* Adapter required)



Compact Flash
Microdrive

Caution:

Make sure you check which direction the card should be inserted, and if the card needs an adapter make sure you attach the adapter before inserting the card. Otherwise, you may not be able to remove the card from the product.

5. Make sure the memory card light flashes and then stays on.
6. Close the memory card slot cover.

Caution:

- Do not insert more than one memory card at a time.
- Do not try to force the memory card into the slot. Memory cards will not go all the way in. Forcing a memory card into the slot may damage the product, the memory card, or both.
- Keep the memory card slot cover closed while a memory card is inserted. This protects the memory card and the slot from dust and static; otherwise data on the memory card may be lost, or the product may be damaged.
- The static charge on memory cards may cause malfunction.
- If the memory card is not correctly formatted, you will see a message on the LCD screen. Press the button indicated on the screen to format the memory card. Any data stored on the memory card will be erased.

Note:

If a digital camera is connected to the product, disconnect it before you insert your memory card.

Removing a memory card


1. Make sure all print jobs are finished.
2. Open the memory card slot cover.
3. Make sure the memory card light is not flashing.
4. Remove the memory card by pulling it straight out of its slot.
5. Close the memory card slot cover.

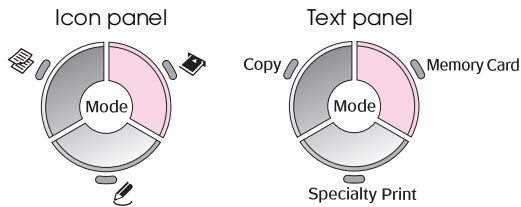
Caution:

- Do not remove the memory card or turn off the product while the memory card light is flashing, or you may lose data on the memory card.
- If your computer uses Windows 2000 or XP, never turn off the product or disconnect the USB cable when a memory card is inserted; you may lose data on the memory card. See your online *User's Guide* for details.

Checking Photos on a Memory Card

You can view all the photos on your memory card.


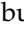
1. Insert a memory card (➔ page 19).
2. Press the  **[Memory Card]** mode button.

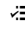



3. Use the  or  button to select **Slide Show**.

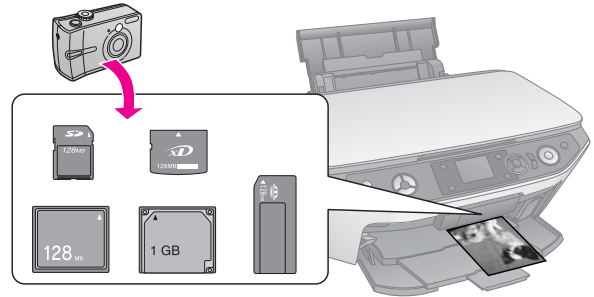



4. Press **OK** to start the slide show. The product displays one photo stored on the memory card at a time and advances to the next photo automatically.

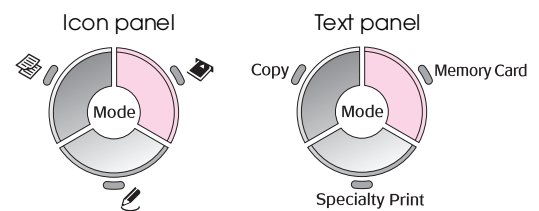
Press the  or  button to pause and replay the slide show.

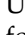

You can print your photo from Slide Show menu (➔ “Printing Photos” on page 21). Press **OK** to select the photo you want to print. Press the  **[Print Settings]** button and change the settings (➔ “Selecting special print settings” on page 22). Then press the  **Start** button.

Printing Photos



1. Load the type of paper you want to use (➔ page 8).
2. Insert a memory card (➔ page 19).
3. Press the  **[Memory Card]** mode button.



4. Use the  or  button to select one of the options for viewing/printing your photos, and then press **OK**.



Setting	Description
View and Print	Prints only the photos that you choose.
Print All Photos	Print all the photos on your memory card.
Print by Date	Prints photos by the date they were taken.
Print Index Sheet	Prints thumbnails of the photos on your memory card and lets you select which ones you want to print (➔ “Selecting and Printing Photos Using an Index Sheet” on page 26).
Slide Show	Displays all photos on your memory card as a slide show (➔ “Checking Photos on a Memory Card” on page 21).
Scan to Memory Card	Saves the photos to a memory card (➔ “Scanning a Photo / Document” on page 34).

- Follow the instructions below to select the photos you want to print and set the number of copies.

Option Selected	Instructions
View and Print	Use the ◀ or ▶ button to select a photo and use the Copies + or - button to set the number of copies.
Print All Photos	Press OK . Use the Copies + or - button to set the number of copies. You can view all of the photos by using the ◀ or ▶ button.
Print by Date	Use the ▲ or ▼ button to select the date, and then use the ▶ button to place a check mark and press OK . Press OK again, and use the ◀ or ▶ button to select a photo. Press the Copies + or - button to set the number of copies.
Slide Show	Use the ◀ or ▶ button to select the photo you want to print. Then press OK . Press Copies + or - button to set the number of copies.

- Press the ≡ [**Print Settings**] button and change the settings (➔ “Selecting special print settings” on page 22). Then press **OK** to apply the new settings.



- Press the ⬠ **Start** button. Your photo is printed.

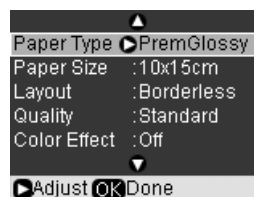
If you need to cancel printing, press the ⏹ **Stop/Clear** button.

Selecting special print settings

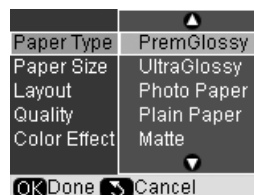
You can choose from various sizes and types of Epson paper and some print settings to get just the results you want.

- Follow the instructions on the preceding pages to select photos you want to print (➔ “Printing Photos” on page 21).
- Press the ≡ [**Print Settings**] button.

- Use the ▲ or ▼ button to select a menu item, then press the ▶ button.




- Use the ▲ or ▼ button to select a setting item, and then press **OK** to apply the new settings.



Setting	Description
Paper Type	Select the setting for the type of paper you loaded (➔ “Selecting Paper” on page 7).
Paper Size	Select the paper size you loaded.
Layout	Select Borderless to print your photo without white borders at the edges. Otherwise select Border or another layout option (➔ “Selecting the layout” on page 23).
Quality	Select the print quality.
Color Effect	Select B&W to print your photo in black and white. Select Sepia to print your photo in sepia.
Enhance	Select PhotoEnhance to adjust the brightness, contrast, and saturation of your photos. Select P.I.M. to use your camera's PRINT Image Matching or Exif Print settings.
Red Eye	Select On to correct red eye. (➔ “Red-eye reduction” on page 23).
Brightness	Adjust this setting if your prints are too light or too dark.
Contrast	Adjust this setting to increase the contrast.
Sharpness	Adjust this setting to sharpen or soften your prints.
Saturation	Adjust the density of color. A higher saturation makes the color appear richer, while a lower saturation makes it appear paler.

Setting	Description
Date	Prints the date your photo was taken in one of the following formats: yyyy.mm.dd (2006.04.13), mmm.dd.yyyy (Apr.13.2006), dd.mmm.yyyy (13.Apr.2006), or None (no date).
Print Info.	Select On to print your camera's exposure time (shutter speed), F-stop (aperture), and ISO speed.
Fit Frame	Select On , to automatically crop your photo to fit inside the space available for the layout you selected. Select Off to turn off automatic cropping and leave white space at the edges of the photo.
Bidirectional	Select On to increase the print speed. Select Off to improve the print quality (but your photos print more slowly).
Expansion	Select the amount the image is expanded when you select Borderless . Standard: No margins are printed. (The image is slightly enlarged and cropped to fill the sheet of paper.) Mid: Low expansion rate. (Margins might be printed.) Min: Lowest expansion rate. (Margins might be printed.)


Red-eye reduction

- Follow the instructions on the preceding pages to select the photos you want to print (➔ "Printing Photos" on page 21).
- Press the  [**Print Settings**] button.
- Use the ▲ or ▼ button to select **Red Eye**, then press the ► button.
- Use the ▲ or ▼ button to select **On**, and then press **OK**.

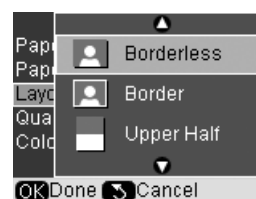
Note:













Depending on the type of photo, parts of the image other than the eyes may be corrected.

Selecting the layout

- Follow the instructions on the preceding pages to select photos you want to print (➔ "Printing Photos" on page 21).
- Press the  [**Print Settings**] button.
- Use the ▲ or ▼ button to select **Layout**, then press the ► button.

- Use the ▲ or ▼ button to select one of these layout options, then press **OK**.



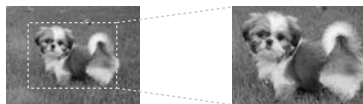
Setting	Description
 Borderless	Prints your photo all the way to the edges of the paper.
 Border	Prints your photo with a white margin at the edge.
 Upper Half	Prints your photo on the upper half of the paper.
 Photo ID	Prints photos at two sizes (35.0 × 45.0 mm and 50.8 × 50.8 mm on the 10 × 15 cm (4 × 6 in.) size photo paper. It is useful for identification photograph.
 2-up	Prints two photos per sheet.
 4-up	Prints four photos per sheet.
 8-up	Prints eight photos per sheet.
 20-up	Prints 20 photos per sheet.
 30-up	Prints 30 photos per sheet.
 80-up	Prints 80 photos per sheet.
 Sticker16	Places 16 images on one sheet. If there are fewer than 16 images, the remaining space is left blank. If two or more is set as the number of prints, it prints the specified number of pages using the same layout.
 P.I.F. 000000*	Prints your photo with the P.I.F. frame.

*If your memory card contains P.I.F. frame data, you can choose the P.I.F. data to print with your photo from the Layout option.

Note:

For most multi-photo layouts, the set number of copies of each selected photo is printed per sheet. If you choose **4-up** as the layout setting, but you do not select four photos, a blank space is left for any missing photos.

Cropping and enlarging a photo



1. Follow the instructions on the preceding pages to select the photos you want to print (➔ “Printing Photos” on page 21).
2. Press the [Display/Crop] button. Depending on your selection, you see a screen like this:

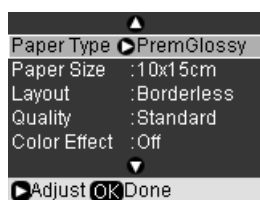


3. Use the buttons displayed at the bottom of the LCD screen to make your settings (➔ “Cropping and enlarging a photo” on page 16).

Note:

To readjust your setting, press the [Back] button to return to the previous screen.

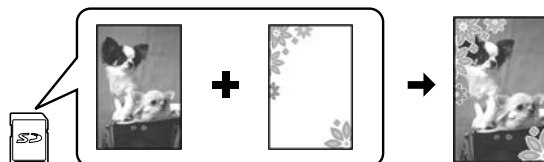
4. When you have finished framing the photo, press **OK**.
5. Use the **Copies +** or **-** button to set the number of copies (1 to 99).
6. Press the [Print Settings] button and change the settings (➔ “Selecting special print settings” on page 22). Then press **OK** to apply the new settings.



7. Press the **Start** button. Your photo is printed.

If you need to cancel printing, press the **Stop/Clear** button.

Printing with fun frames



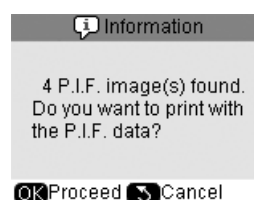
You can add colorful frames to your favorite photographs with PRINT Image Framer.

1. Choose from a variety of frames on the software CD-ROM that came with the product and save them to a memory card using EPSON PRINT Image Framer Tool. For details, see the software help.

Tip:

You can also use the PIF DESIGNER software to edit the existing frames or create your own frames. For details, see the software help.

2. Load the appropriate paper for the frame size (➔ page 8).
3. Insert the memory card containing your photos and P.I.F. frames (➔ page 19).
4. You see information on the LCD screen telling you how many P.I.F. images are on the memory card.



If you want to print your photos by using the P.I.F. frames already assigned, see “Print photos without using the Memory Card mode menu” on page 25.

If you want to select the P.I.F. frames on the memory card, see “Print photos using the Memory Card mode menu” on page 25.

Print photos without using the Memory Card mode menu

1. Press **OK**.
 2. Use the ◀ or ▶ button to select the photo and P.I.F. data you want to print. Then press **OK**.
- Note:**
- ❑ Press **OK** again to check how the photo looks in the frame.
 - ❑ P.I.F. frames have already been assigned to each photo, so you cannot change the frame.
3. Press the **Copies +** or **-** button to set the number of copies (1 to 99).
 4. Press the ≡ [**Print Settings**] button and change the settings (➔ “Selecting special print settings” on page 22). Then press **OK** to apply the new settings.
 5. Press the ⬠ **Start** button. Your photo is printed.

If you need to cancel printing, press the ⓧ **Stop/Clear** button.

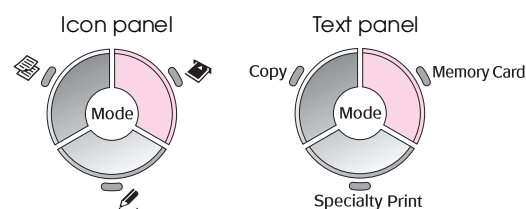
Print photos using the Memory Card mode menu

1. Press the ⏪ [**Back**] button.
2. Use the ◀ or ▶ button to select **View and Print**, **Print by Date**, or **Print All Photos**. Then press **OK**.
3. Use the ◀ or ▶ button to select the photo you want to print, then press the ≡ [**Print Settings**] button.
4. Use the ▲ or ▼ button to select **Layout**, then press the ▶ button.
5. Use the ▲ or ▼ button to select the P.I.F. frame you want to print with, then press **OK**.
6. Press **OK** again and use the **Copies +** or **-** button to set the number of copies (1 to 99).
7. Press the ⬠ **Start** button. Your photo is printed.

If you need to cancel printing, press the ⓧ **Stop/Clear** button.

Printing on a photo stickers sheet

1. Load a photo stickers sheet (➔ page 8).
2. Insert a memory card (➔ page 19).
3. Press the ⬠ [**Memory Card**] mode button.



4. Follow the instructions on the preceding pages to select photos you want to print (➔ “Printing Photos” on page 21).
5. Press the ≡ [**Print Settings**] button and change the settings (➔ “Selecting special print settings” on page 22). Then press **OK** to apply the new settings.

Setting	Description
Paper Type	Select PhotoStickers .
Paper Size	Make sure A6 is selected.
Layout	Select Stickers 16 .

6. Press the ⬠ **Start** button. Your photo is printed.
- If you need to cancel printing, press the ⓧ **Stop/Clear** button.
7. If your printed image is not centered on the photo stickers sheet, you can adjust its printing position. Press the ⚙ [**Setup**] button.
 8. Use the ◀ or ▶ to select **Print Position**, then press **OK**.
 9. Use the ▲ or ▼ button to select **Sticker**.
 10. Press the ▶ button and then use the ▲, ▼, ◀, or ▶ buttons to select how far (in millimeters) to move the print position.

Print Position Options	Description
Up-Down	Move the photo stickers sheet print position up or down. You can adjust it by 0.1 mm from -2.5 to +2.5 mm.
Left-Right	Move the photo stickers sheet print position left or right. You can adjust it by 0.1 mm from -2.5 to +2.5 mm.

11. Press **OK** to apply the new setting. Then try printing again.

Note:

This product retains your settings even after it has been turned off, so you do not need to readjust the printing position each time you print on a photo stickers sheet.

Using DPOF to select your photos

If your camera supports DPOF (Digital Print Order Format), you can use it to preselect photos and the number of copies to print while the memory card is still in your camera. See your camera's instruction manual for details.

1. Load the type of paper you want to use (➔ page 8). Load enough sheets for the number of photos you want to print.
2. Insert the memory card containing DPOF data (➔ page 19). You see this screen:



3. Press **OK** to print DPOF data. You see this screen:



4. Press the ≡ **[Print Settings]** button and change the settings (➔ "Selecting special print settings" on page 22). Then press **OK** to apply the new settings.



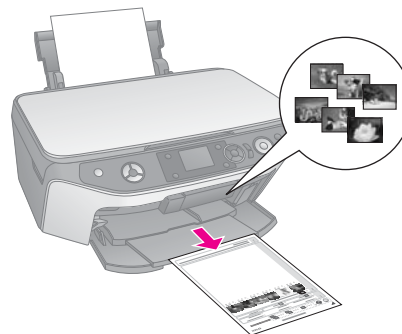
5. Press the ◊ **Start** button. Your photos are printed.

If you need to cancel printing, press the Ⓢ **Stop/Clear** button.

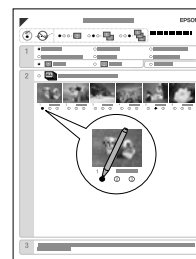
Selecting and Printing Photos Using an Index Sheet

To select photos for printing, you can use an index sheet. First, print an index sheet which has small images of all the photos on your memory card. Then, mark the photos on the index sheet that you want to print, scan the sheet, and the selected photos will be printed automatically.

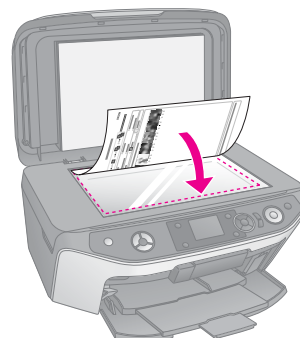
Printing an index sheet



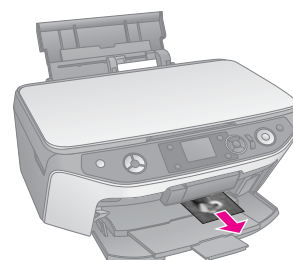
Selecting photos from the index sheet



Scanning the index sheet




Printing the selected photos

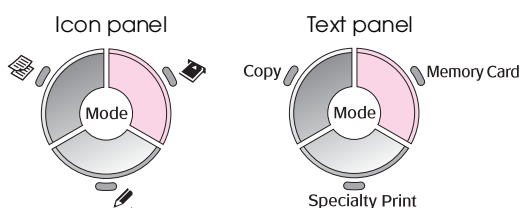




1. Printing an index sheet

1. Load several sheets of A4-size plain paper (➔ page 8).



Up to 30 images are printed on each page, so if there are more than 30 photos on your memory card, you will need enough sheets for all the index pages to be printed.

2. Insert a memory card (➔ page 19).
3. Press the  [Memory Card] mode button.






4. Use the  or  button to select **Print Index Sheet**, and then press **OK**.




5. Use the  or  button to select **Print Index Sheet Select**.



6. Press the  button and then use the  or  button to select the range of photos you want to print on the index sheet. Then press **OK**.

Range	Description
All Photos	Prints all the photos stored on a memory card.
Latest 30	Prints 30 photos from the latest one in order of the file name.
Latest 60	Prints 60 photos from the latest one in order of the file name.
Latest 90	Prints 90 photos from the latest one in order of the file name.

7. Press the  **Start** button. The index sheet is printed.


If you need to cancel printing, press the  **Stop/Clear** button.

Note:

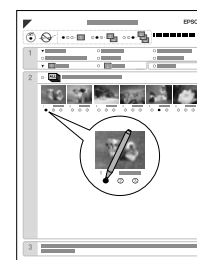
- Make sure the triangle mark on the upper left corner of the index sheet is printed properly. If the index sheet is not printed correctly, the product cannot scan it.
- If there are a lot of photos on your memory card, this may take a few minutes.
- For multiple index sheets, the pages are printed from the last sheet to the first, so the most recent images are printed first.

2. Selecting photos from the index sheet

On the index sheet, use a dark pen or pencil to fill in the ovals and make your selections.

Good: 

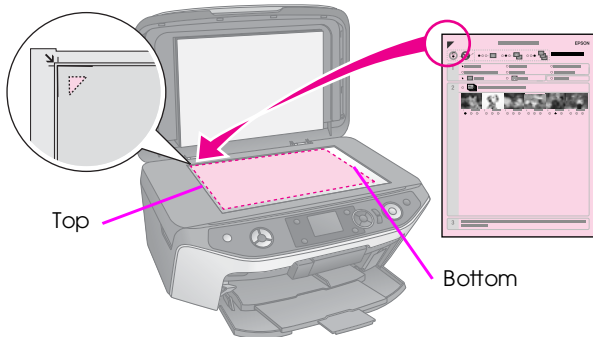
NOT good:   



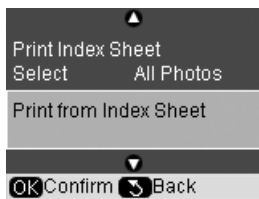
1. In section 1, select the size and type of paper you want to print on (➔ page 7). Fill in the oval to the left of your selection.
2. Select whether to print your photos with or without borders.
3. Fill in the **Date** oval to include an optional data stamp.
4. In section 2, select **All** to print one copy of each photo, or fill in the number beneath each photo to select 1, 2, or 3 copies.

3. Scanning the index sheet and printing the selected photos

1. Place the index sheet face-down on the document table, in the upper left corner, so that the top of the sheet is aligned against the left edge of the document table.



2. Close the document cover.
3. Load the type of paper you marked on the index sheet (➔ page 8). Load enough sheets for the number of photos you want to print.
4. On the LCD screen, make sure **Print from Index Sheet** is selected, then press the **Start** button. The sheet is scanned and your photos are printed.



If you need to cancel printing, press the **Stop/Clear** button.

Note:

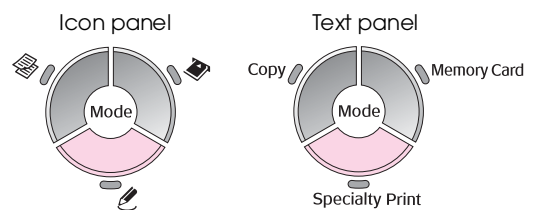
If you have more than one index sheet, wait each time until printing is complete. Then repeat the steps above to scan and print from each additional sheet.

Making an Original CD/DVD

You can print photos from your memory card directly onto a CD/DVD without using your computer. And you can further enhance your CD/DVD collection by making your own CD/DVD jacket.

Printing a CD/DVD label

1. Place your CD/DVD on the CD/DVD tray and insert it into the product (➔ "Loading a CD/DVD" on page 9).
2. Insert a memory card (➔ page 19).
3. Press the **[Specialty Print]** mode button.



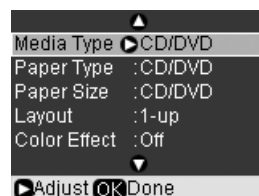
4. Use the **◀** or **▶** button to select **Print on CD/DVD**, then press **OK**.



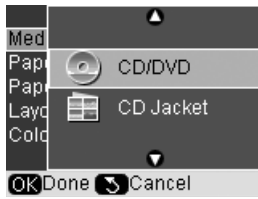
You see the first photo on your memory card displayed on the screen:



5. Press the **[Print Settings]** button.
6. Use the **▲** or **▼** button to select a menu item, then press the **▶** button.



7. Use the ▲ or ▼ button to select a setting item, and then press **OK** to apply the new settings.



Setting	Description
Media Type	Select CD/DVD .
Paper Type	Select CD/DVD to print photos on a CD/DVD label directly. If you want to check the print output first, select Plain Paper .
Layout	<p>1-up prints one photo on the CD/DVD, centered on the hole in the middle of the disk.</p> <p>4-up prints four photos on the CD/DVD, with one image in each of the four quarters.</p> <p>8-up/12-up prints eight or 12 photos on the CD/DVD, arranged in a circle around the outer edge of the disk.</p>

8. When you finish making print settings, press **OK**.
9. Use the ◀ or ▶ button to select a photo and then press **OK**.

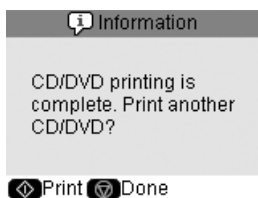
Note:

For most multi-photo layouts, the set number of copies of each selected photo is printed per CD/DVD. If you choose **4-up** as the layout setting, but you do not select four photos, a blank space is left for any missing photos.

10. Press the ◊ **Start** button. Your CD/DVD is printed.

If you need to cancel printing, press the ⏹ **Stop/Clear** button.

11. If you want to print another CD/DVD, press the ◊ **Start** button after printing has finished.

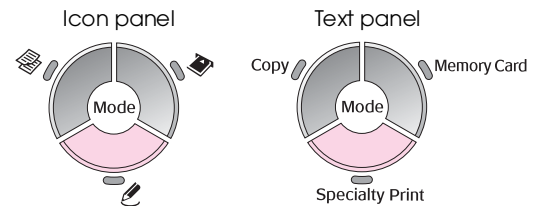


12. When printing is complete, pull the tray out of the product (➔ "Ejecting the CD/DVD Tray" on page 10) and let the CD/DVD dry fully before handling it.

13. When you finish printing CD/DVDs, raise the tray lever to return the front tray to its former position (➔ "Ejecting the CD/DVD Tray" on page 10).

Printing a CD/DVD jacket

1. Load A4 size paper (➔ page 8).
2. Insert a memory card (➔ page 19).
3. Press the [**Speciality Print**] mode button.



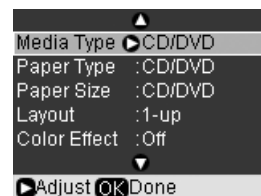
4. Use the ◀ or ▶ button to select **Print on CD/DVD**, then press **OK**.



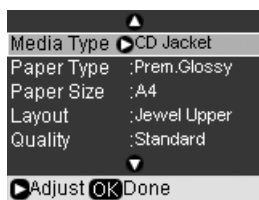
You see the first photo on your memory card displayed on the screen:



5. Press the ≡ [**Print Settings**] button.
6. Use the ▲ or ▼ button to select a menu item, then press the ▶ button.



7. Use the ▲ or ▼ button to select a setting item, then press **OK** to apply the new settings.



Setting	Description
Media Type	Select CD Jacket .
Paper Type	Select the setting for the type of paper you loaded (➔ "Selecting Paper" on page 7).
Layout	Select a layout option.
Quality	Select a quality option.

Tip:

The settings in the table are only one example. You can make other settings from the Print Settings menu.

8. When you finish making print settings, press **OK**.
9. Use the ◀ or ▶ button to select a photo; use the **Copies +** or **-** button to set the number of copies.
10. Press the ⬢ **Start** button to start printing.

If you need to cancel printing, press the ⓧ **Stop/Clear** button.

Printing Stored Photos

You can copy pictures from your memory card to a USB storage device, such as a Zip drive, recordable CD-R/RW drive (with a USB connection), MO (Magneto-Optical) drive, or USB flash drive. This lets you delete the photos on your memory card and reuse it without losing your originals.

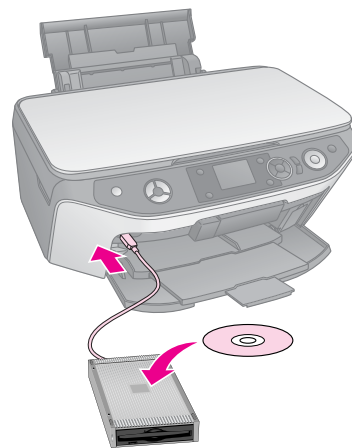
Once your files are copied, you can print them at any time from the storage device.

Note:

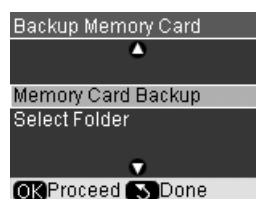
- ❑ Not all USB devices are supported. For details, contact your regional customer support.
- ❑ If you use a CD-ROM or Zip drive, it must provide its own power (from an external power supply or adapter).

Copying photos to a USB drive

1. If the product is connected to your computer, unplug the USB cable or turn off your computer.
2. Make sure the product is turned on and the memory card containing your photos is inserted in it.
3. Connect a USB cable from your storage drive to the external interface USB port on the front of the product. (If you are using a thumb drive, plug it in directly.) Then, insert your media into the storage drive.



4. Press the ⚙ [Setup] button.
5. Use the ◀ or ▶ button to select **Backup Memory Card**, then press **OK**.
6. Use the ▲ or ▼ button to select **Memory Card Backup**, then press **OK**.



7. You see the information on the LCD screen. Press **OK** to proceed.
8. A confirmation message is displayed on the LCD screen. Press **OK** to start backup.

All the photos on your memory card are copied to your connected storage device. Depending on how many photos there are, this may take several minutes.

9. When you are done copying photos, press the **⏪ [Back]** button and remove the memory card (➔ “Removing a memory card” on page 20).

Note:

When backing up photos to a CD-R/RW, the product creates a folder for each backup session. You can store multiple backup sessions on a CD-R/RW.

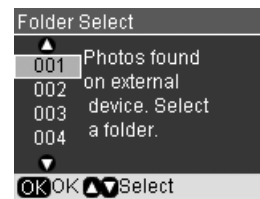
Printing photos from a storage drive

1. Follow the instructions on the preceding pages to connect your drive to the product (➔ “Copying photos to a USB drive” on page 30).

Note:

Remove any memory cards from the product. The product does not recognize peripheral devices when a memory card is inserted.

2. When you see this screen, use the **▲** or **▼** button to select which folder to print from, then press **OK**.



3. Press the **⏪ [Memory Card]** mode button, then follow the same steps as you would to print from your camera’s memory card (➔ “Printing Photos” on page 21).

Printing from a Digital Camera/Mobile Phone/PDA

You can print your photos from your digital camera or mobile phone directly.

From a Digital Camera

PictBridge and USB DIRECT-PRINT let you print your photos by connecting your digital camera directly to this product.

Make sure your camera and photos meet the following requirements.

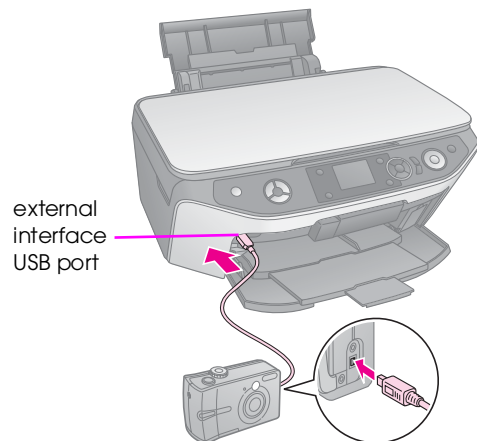
Direct printing compatibility	PictBridge or USB DIRECT-PRINT
File format	JPEG
Image size	80 × 80 pixels to 9200 × 9200 pixels

1. Make sure the product is not printing from a computer.
2. Remove any memory cards from the product.
3. Load the type of paper you want to use (➔ page 8). Load enough sheets for the number of photos you want to print.
4. Press the **⌘** [**Setup**] button.
5. Use the **◀** or **▶** button to select **PictBridge Setup**, then press **OK**.



6. Use the LCD screen to select the print settings (➔ "Selecting special print settings" on page 22).
7. When you finish selecting your print settings, press **OK**.

8. Connect the USB cable that came with your camera to the external interface USB port of this product.



9. Make sure your camera is turned on and use it to select the photos you want to print, adjust any necessary settings, and print your photos. See your camera's manual for details.

Note:

- ❑ If your camera is not compatible with PictBridge or USB DIRECT-PRINT, you will see a message saying that the connected device cannot be used. Epson cannot guarantee the compatibility of any cameras.
- ❑ Depending on the setting on this product and the digital camera, some combinations of paper type, size, and layout may not be supported.
- ❑ Some of the settings on your digital camera may not be reflected in the output.

From a Mobile Phone

If your mobile phone has an infrared port, you can send your JPEG photo data from your phone to the product and print it.

Make sure your mobile phone allows you to send photo data via infrared.

1. Make sure your product is not printing from a computer.
2. Load the type of paper you want to use (➔ page 8).
3. Press the **⏏** [**Setup**] button.
4. Use the **◀** or **▶** button to select **PictBridge Setup**, then press **OK**.

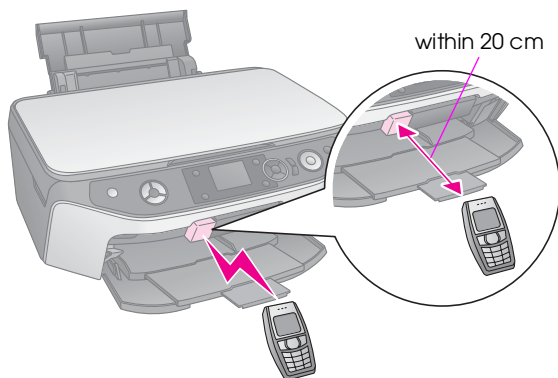


5. Use the **▲**, **▼**, or **▶** button to select the print settings (➔ "Selecting special print settings" on page 22).



6. When you have finished selecting your print settings, press **OK**.
7. Aim your phone's infrared port at the infrared port on the product and send your photo data. See your mobile phone's manual for details.

The product starts printing after it receives the data properly.



Note:

- ❑ The infrared port can receive data from up to 20 cm away.


- ❑ You can send up to 10 pieces of image data (the maximum total image size is 3 MB), including documents that are being printed.
- ❑ You may not be able to transmit your data if direct sunlight or fluorescent light is shining onto either of the infrared ports.
- ❑ The product's infrared specification is as follows.

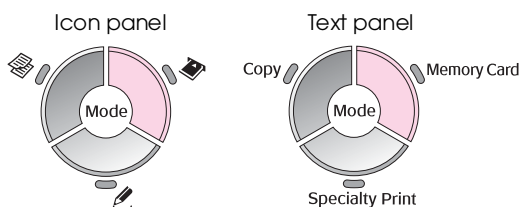
Version	Compliant with IrDA® Standard Specifications. (Ver.1.3 Low Power)
Maximum data rate	4 M bit/s
Minimum link distance upper limit	0.2 meters



Saving to a Memory Card

You can save scans of photos or documents to your memory card in JPEG or PDF format directly. You can also scan to your computer instead of a memory card (see the instructions in your on-screen *User's Guide*).




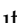
Scanning a Photo / Document

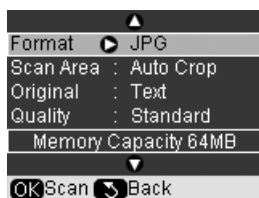
1. Insert a memory card (➔ page 19).
2. Place your photo or document on the document table (➔ "Placing Originals on the Document Table" on page 11).
3. Press the  [Memory Card] mode button.



4. Use the  or  button to select **Scan to Memory Card**, then press **OK**.



5. Use the , , , and  buttons to select the following options:



Setting	Description
Format	Select JPG or PDF .
Scan Area	If the edges of the photo are light in color, select Max Area . Otherwise, select Auto Crop .
Original	Select the type of original you placed on the document table.
Quality	Select the quality of the scanned documents.

6. Press **OK**. The photo is scanned and saved to the **EPSCAN** folder on your memory card.

When scanning is finished, you see a confirmation screen. Note the name given to your image and its location on the card.

Caution:

- Never open the scanner unit while scanning; otherwise, you may damage the product.
- Do not remove the card or turn off the product while the memory card light is flashing, or you may lose data.

Note:

If the edges of the scan are cropped off, move the photo away from the corner slightly.

Maintenance

You can keep the operation of the product at its best by performing the procedures described in this chapter. Also, this section includes instructions on how to replace ink cartridges and transport the product.

Replacing Ink Cartridges

When you print with low or expended ink cartridges, you see a message on the LCD screen. Check which cartridge is low or expended.

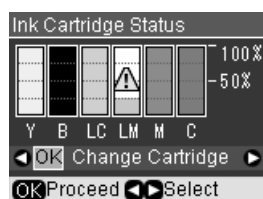
Tip:

If a cartridge is more than six months old, print quality may decline. If necessary, try cleaning the print head (➔ “Cleaning the print head” on page 38). If printouts still do not look their best, you may need to replace the cartridge.

Checking the ink cartridge status

1. Press the **[Setup]** button.
2. Use the **◀** or **▶** button to select **Ink Cartridge Status**, then press **OK**.

You see a graphic showing the ink cartridge status:



Y (Yellow), **B** (Black), **LC** (Light Cyan), **LM** (Light Magenta), **M** (Magenta), **C** (Cyan).

3. When you are done checking the ink cartridge status, use the **◀** or **▶** button to select **OK**.

If you want to replace the ink cartridge, use the **◀** or **▶** button to select **Change Cartridge**, then press **OK**. (➔ “Removing and installing ink cartridges” on page 36).

4. Press the **⏪** [**Back**] button to return to the previous screen.

When your ink starts getting low, make sure you have replacement cartridges available. You cannot print if a cartridge is expended.

Note:

Epson cannot guarantee the quality or reliability of non-genuine ink. If non-genuine ink cartridges are installed, the ink cartridge status will not be displayed.

Purchasing ink cartridges

Use these Epson ink cartridges within six months of installing them and before the expiration date.

Color	Part Number	
	RX560 Series	RX590 Series
(B) Black	T0801	T0811/T0821
(C) Cyan	T0802	T0812/T0822
(M) Magenta	T0803	T0813/T0823
(Y) Yellow	T0804	T0814/T0824
(LC) Light Cyan	T0805	T0815/T0825
(LM) Light Magenta	T0806	T0816/T0826

⚠ Caution:

Epson recommends the use of genuine Epson ink cartridges. The use of non-genuine ink may cause damage that is not covered by Epson's warranties, and under certain circumstances, may cause erratic printer behavior. Epson cannot guarantee the quality or reliability of non-genuine ink. Information about the ink cartridge status is not displayed when non-genuine ink is used.

Ink cartridge precautions

⚠ Warning:

If ink gets on your hands, wash them thoroughly with soap and water. If ink gets in your eyes, flush them immediately with water. If you still have discomfort or vision problems, see a doctor immediately.

- To avoid damaging the product, never move the print head by hand.
- When an ink cartridge is expended, you cannot continue copying or printing even if the other cartridges still contain ink.
- Leave the expended cartridge installed until you have obtained a replacement. Otherwise the ink remaining in the print head nozzles may dry out.
- An IC chip on each ink cartridge monitors the amount of ink used from the cartridge. Cartridges are usable even if they are removed and reinserted. However, some ink is consumed each time cartridges are inserted because the product automatically checks their reliability.
- For maximum ink efficiency, only remove an ink cartridge when you are ready to replace it. Ink cartridges with low ink status cannot be used when reinserted.

Removing and installing ink cartridges

Make sure you have a new ink cartridge before you begin. Once you start replacing a cartridge, you must complete all the steps in one session.

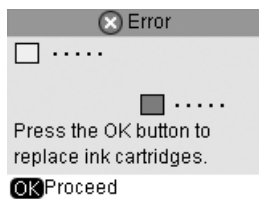
Note:

Do not open the ink cartridge package until you are ready to install it in the printer. The cartridge is vacuum packed to maintain its reliability.

1. Do one of the following:

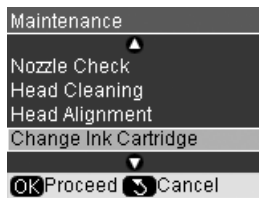
■ **If an ink cartridge is expended:**

Look at the message on the LCD screen to find out which cartridge should be replaced, then press **OK**.



■ **If an ink cartridge is not expended:**

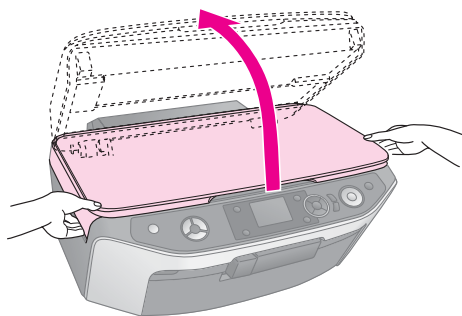
Check the ink cartridge status (See on page 35). Press the **[Setup]** button. Use the **◀** or **▶** button to select **Maintenance**, and press **OK**. Use the **▲** or **▼** button to select **Change Ink Cartridge**, and press **OK**.



2. Make sure the document cover is closed, then lift up the scanner unit.

Caution:

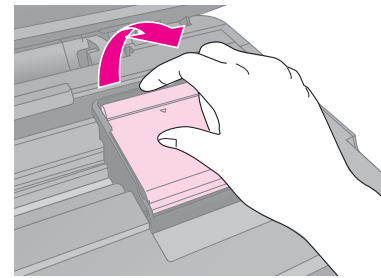
Do not lift up the scanner unit when the document cover is open.



3. Open the cartridge cover.

Caution:

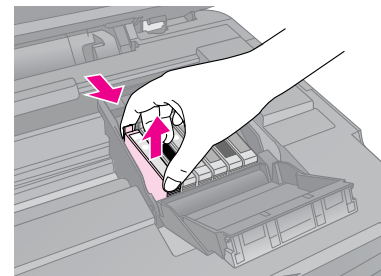
Never attempt to open the cartridge cover while the print head is moving. Wait until the cartridges have moved to the replacement position.



4. Remove the cartridge you need to replace. Squeeze the tab at the back of the cartridge, lift it straight up and out of the product. Dispose of it carefully. Do not take the used cartridge apart or try to refill it.

Note:

If it is hard to remove the cartridge, lift the cartridge with more force until it is removed.



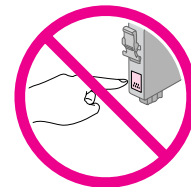
Caution:

Do not refill the ink cartridge. Other products not manufactured by Epson may cause damage that is not covered by Epson's warranties, and under certain circumstances, may cause erratic printer behavior.

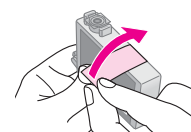
5. Remove the new cartridge from its package.

Caution:

Do not touch the green chip on the side of the cartridge. This can damage the ink cartridge.

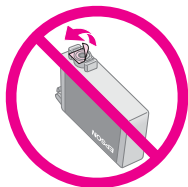


6. Remove the yellow tape from the bottom of the ink cartridge.

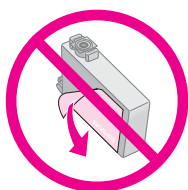


⚠ Caution:

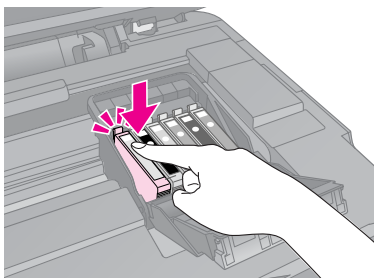
- ❑ You must remove the yellow tape from the cartridge before installing it; otherwise, print quality may decline or you may not be able to print.
- ❑ If you have installed an ink cartridge without removing the yellow tape, take the cartridge out of the printer, remove the yellow tape, and then reinstall it.
- ❑ Do not remove the transparent seal from the bottom of the cartridge; otherwise, the cartridge may become unusable.



- ❑ Do not remove or tear the label on the cartridge; otherwise, ink will leak.



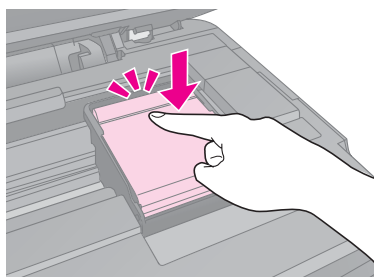
7. Place the new ink cartridge into the holder and push it down until it clicks into place.



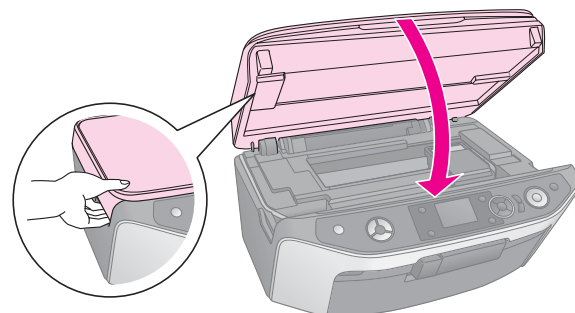
8. Replace any other ink cartridges that need to be replaced.
9. Close the ink cartridge cover and press it until it clicks into place.

⚠ Caution:

If you find it difficult to close the cover, make sure all the cartridges are firmly seated. Press down on each cartridge until you hear it click into place. Do not attempt to force the cover closed.



10. Close the scanner unit.



11. Press **OK**.

The product begins charging ink and the **Charging ink. Please wait.** message appears on the LCD screen. This takes about one minute. When it has finished, **Ink cartridge replacement is complete.** appears on the LCD screen.

⚠ Caution:

Do not turn off the product during ink charging as this will waste ink.

Note:

If you had to replace the ink cartridge during copying, the documents or photos on the document table may have moved slightly when you opened and closed the scanner unit. To ensure copy quality, after ink charging is finished, cancel the job that is copying and start again from placing the originals.

Checking and Cleaning the Print Head

If your printouts are unexpectedly light, colors are missing, or you see light or dark lines across the page, you may need to clean the print head. This clears the print head nozzles, which can become clogged if you do not use the product for a long time.

Note:

Make sure the front tray is in the paper position (lower position) and the CD/DVD tray is not inserted in the product (➔ page 8).

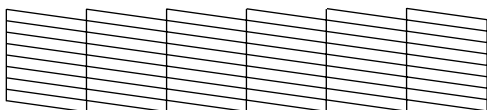
Tip:

We recommend that you turn on the product at least once a month to maintain good print quality.

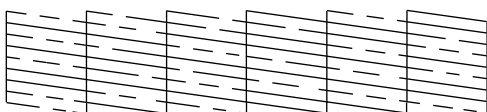
Checking the print head

You can print a nozzle check pattern to see if any print head nozzles are clogged, or to check the results after cleaning the print head.

1. Load A4-size plain paper (➔ page 8).
2. Press the **ⓘ [Setup]** button. (If you have just finished cleaning the print head, you can start the nozzle check by pressing the **⬠ Start** button.)
3. Use the **◀** or **▶** button to select **Maintenance**, then press **OK**.
4. Use the **▲** or **▼** button to select **Nozzle Check**, then press **OK**.
5. Press the **⬠ Start** button.
6. Examine the nozzle check pattern you printed. Each staggered line should be solid, with no gaps, as shown.



- If your printout looks okay, the print head does not need to be cleaned yet. Press **OK** to return to the main menu.
- If you see any gaps, as shown below, clean the print head as described in the next section.



Cleaning the print head

Follow these steps to clean the print head so it can deliver ink properly. Before cleaning the print head, run a nozzle check to see if the print head needs cleaning (➔ “Checking the print head” on page 38).

Note:

- ❑ Print head cleaning uses ink, so clean it only if quality declines.
- ❑ If a message on the LCD screen tells you that a cartridge is expended or low on ink, you cannot clean the print head. You must first replace the indicated ink cartridge (➔ “Replacing Ink Cartridges” on page 35).

1. Make sure the product is turned on but not printing.
2. Press the **ⓘ [Setup]** button.
3. Use the **◀** or **▶** button to select **Maintenance**, then press **OK**.
4. Use the **▲** or **▼** button to select **Head Cleaning**, then press **OK**.
5. Press the **⬠ Start** button to start cleaning the print head.

The product begins cleaning the print head and the **Print head cleaning in progress. Please wait.** message appears on the LCD screen.

Caution:

Never turn off the product while head cleaning is in progress. You may damage it.

6. When cleaning finishes, a message displays on the LCD screen. Then press the **⬠ Start** button to print a nozzle check pattern to check the results (➔ “Checking the print head” on page 38).

If there are still gaps or the test patterns are faint, run another cleaning cycle and check the nozzles again.

Note:

If you do not see any improvement after cleaning about four times, turn off the product and wait for at least 6 hours. This lets any dried ink soften. Then try cleaning the print head again. If quality still does not improve, one of the ink cartridges may be old or damaged and needs to be replaced (➔ “Replacing Ink Cartridges” on page 35).

Aligning the Print Head

If you notice that vertical lines are not aligned properly on the nozzle check printout, you may be able to solve this problem by aligning the print head.

Note:

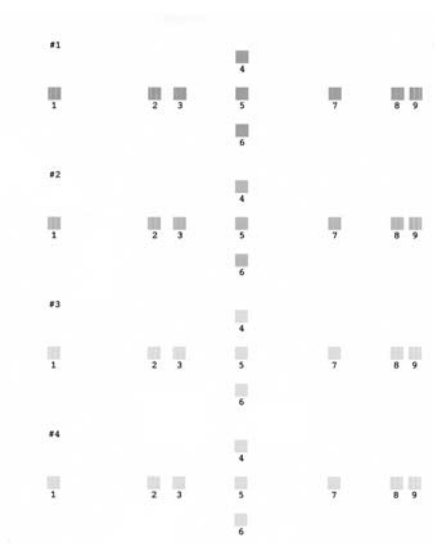
Make sure the front tray is in the paper position (lower position) and the CD/DVD tray is not inserted in this product (➔ page 8).

1. Make sure the product is turned on and not printing.
2. Load A4-size plain paper (➔ page 8).
3. Press the **⌘ [Setup]** button.
4. Use the **◀** or **▶** button to select **Maintenance**, then press **OK**.
5. Use the **▲** or **▼** button to select **Head Alignment**, then press **OK**.
6. Press the **◇ Start** button. Four rows of alignment patterns are printed.

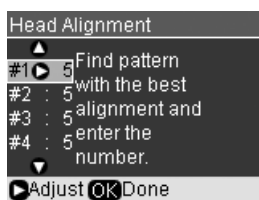
Note:

Do not press the **⊗ Stop/Clear** button while printing an alignment pattern.

7. Look at pattern #1 and find the patch that is most evenly printed, with no noticeable streaks or lines.



8. Press the **▶** button then use the **▲** or **▼** button to select the number for that patch.



9. Press **OK**, then enter the numbers for the other patterns in the same way.
10. When you are done, press **OK** and you see a **Print head alignment is complete.** message.

Changing the Language Displayed on the LCD Screen

You can change the language displayed on the LCD screen using the following procedure. Certain type of products may not have this function.

1. Press the **⌘ [Setup]** button.
2. Use the **◀** or **▶** button to select **Maintenance**, then press **OK**.
3. Use the **▲** or **▼** button to select **Language**, then press **OK**.
4. Use the **▲** or **▼** button to select the language that you want to display.
5. Press **OK**.

Setting the Screen Saver

If you set the screen saver, the slide show begins after the product is inactive for more than three minutes.

1. Press the **⌘ [Setup]** button.
2. Use the **◀** or **▶** button to select **Maintenance**, then press **OK**.
3. Use the **▲** or **▼** button to select **Screen Saver Settings**, then press **OK**.
4. Use the **▲** or **▼** button to select **Memory Card Data**.
5. Press **OK**.

Restoring Default Settings

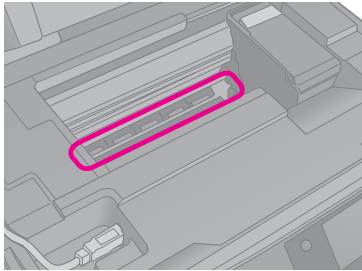
If you want to reset the print and copy settings to their original factory defaults, follow these steps:

1. Press the **⌘ [Setup]** button.
2. Use the **◀** or **▶** button to select **Restore Default Settings**.
3. Press **OK**.
4. A confirmation message is displayed on the LCD screen. Then press **OK** to restore the settings.

Cleaning This Product

To keep the operation of the product at its best, clean it periodically using the following procedure.

1. Unplug the power cord.
2. Remove any paper from the sheet feeder.
3. Use a soft brush to carefully clean away all dust and dirt from the sheet feeder.
4. If the glass surface of the document table gets dirty, clean it with a soft, dry, clean cloth. If the glass surface is stained with grease or some other hard-to-remove material, use a small amount of glass cleaner and a soft cloth to remove it. Wipe off all remaining liquid.
5. If the inside of the product accidentally gets soiled with ink, use a soft, dry, clean cloth to wipe the ink off the area indicated in the illustration.



Warning:

Be careful not to touch the gears or rollers inside the product.

Caution:

- ❑ Do not press the glass surface of the document table with any force.
- ❑ Be careful not to scratch or damage the glass surface of the document table, and do not use a hard or abrasive brush to clean it. A damaged glass surface can decrease the scan quality.
- ❑ Do not apply grease to the metal parts under the print head carriage.
- ❑ Never use alcohol or thinner to clean the product. These chemicals can damage the components as well as the case.
- ❑ Be careful to keep water away from the printing and scanning mechanisms and electronic components.
- ❑ Do not spray the inside of this product with lubricants. Unsuitable oils can damage the mechanism. Contact your dealer or a qualified service person if lubrication is needed.

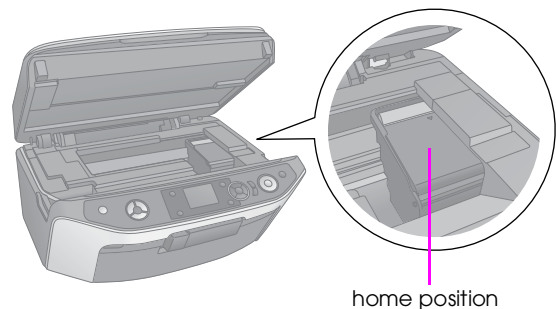
Transporting This Product

If you need to move the product some distance, you need to prepare it for transportation in its original box or one of a similar size.

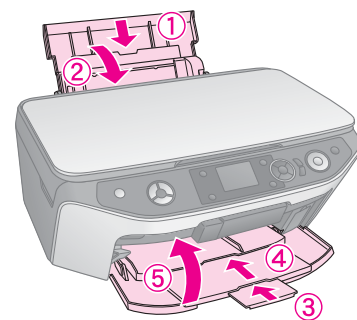
Caution:

- ❑ When storing or transporting the product, avoid tilting it, placing it vertically, or turning it upside down; otherwise ink may leak from the cartridges.
- ❑ Leave the ink cartridges installed; removing the cartridges for transportation may damage the product.

1. Remove all paper from the sheet feeder and make sure the product is off.
2. Open the scanner unit and make sure the print head is in the home position on the right.



3. Close the scanner unit.
4. Unplug the power cord from the outlet, then disconnect the USB cable from your computer.
5. Close the paper support, the front tray, and the front cover.



6. Repack the product in the box, using the protective materials that came with it.

Keep the product level as you transport it. If you notice a decline in print quality, run a cleaning cycle (➔ “Checking and Cleaning the Print Head” on page 38) or align the print head (➔ “Aligning the Print Head” on page 39).

Solving Problems

If you have a problem with the product, check the messages on the LCD screen to diagnose what may be causing the problem.

You can also check “Problems and Solutions” on page 41 for troubleshooting suggestions on using the product without a computer. See the *User’s Guide* included in the software CD-ROM for help on using the product with a computer.

Error Messages

You can diagnose and solve most problems by checking the error messages on the LCD screen. If you cannot solve the problems by checking the messages, use the following table and try the recommended solution.

Error Messages	Solution
A printer error has occurred. See your documentation.	Turn the product off and then back on. Make sure that no paper is still in the printer. If the error message still appears, contact your dealer.
A scanner error has occurred. See your documentation.	Turn the product off and then back on. If the error message still appears, contact your dealer.
Waste ink pad in the printer is saturated. Contact your dealer to replace it.	Contact your dealer to replace it.
Cannot recognize ink cartridges.	Make sure the ink cartridges are installed correctly. (➔ “Replacing Ink Cartridges” on page 35). Then try again.
Cannot recognize the device.	Make sure the memory card has been inserted correctly. If you connected a USB storage device, make sure the storage disk has been inserted correctly.
Cannot recognize the memory card or disk.	Make sure the memory card or storage disk has been inserted correctly. If so, check to see if there is a problem with the card or disk and try again.
Backup Error Error Code xxxxxxx	A problem occurred and backup was canceled. Make a note of the error code and contact your dealer.

Error Messages	Solution
A problem occurred while formatting. Formatting canceled.	Retry the procedure. If the error reoccurs, there may be a problem with your memory card or storage disk. Check the card or disk and try again.
An error occurred while saving. Save canceled.	
Cannot create a folder on the memory card or disk. Operation canceled.	Insert a new memory card or storage disk and try again.
Print head cleaning failed.	Retry the procedure. If the error message still appears, contact your dealer.

Tip:

If you experience any problems while using bluetooth, see your Online User’s Guide.

Problems and Solutions

Check the solutions below if you are having problems using the product.

Setup problems

The product makes noise after ink cartridge installation.

- When you install ink cartridges, the ink delivery system must be charged. Wait until charging is finished (the charging message disappears from the LCD screen), then turn off the product. If you turn it off too soon, it may use extra ink the next time you turn it on.
- Make sure the ink cartridges are seated securely and no packing material remains in the product. Open the cartridge cover and push the cartridges down until they click into place. Turn off the power, wait a moment, then turn it back on.

A screen that prompts you to restart the computer did not appear after finishing the software installation.

- The software has not been installed correctly. Eject and insert the CD-ROM, and then install the software again.

The terms on the LCD screen are not displayed in your language.

- If the language displayed on the LCD screen is not the one you want, select the language you want from the Setup menu (➔ “Changing the Language Displayed on the LCD Screen” on page 39).

Printing and copying problems

The product makes printing sounds, but nothing prints.

- The print head nozzles may need cleaning (➔ “Cleaning the print head” on page 38).
- Make sure the product is on a flat, stable surface.

The margins are incorrect.

- Make sure your original is positioned in the top left corner of the document table.
- If the edges of the copy are cropped off, move the original away from the corner slightly.
- Make sure the paper size settings are correct for the paper you have loaded.
- Make sure your paper is loaded short edge first, all the way to the right, with the left edge guide lightly against the paper (➔ “Loading Paper” on page 8).
- Do not load paper above the \equiv arrow mark inside the left edge guide (➔ “Loading Paper” on page 8).
- Select **Actual** instead of **Auto Fit Page** or adjust the zoom settings.

Blank pages are printed.

- Make sure the paper size settings are correct for the paper you have loaded.
- The print head nozzles may need cleaning (➔ “Cleaning the print head” on page 38).

Paper feed problems

Paper does not feed correctly or is jammed.

- If paper does not feed, remove it from the sheet feeder. Fan the paper, load it against the right side, and slide the left edge guide against the paper (but not too tightly). Make sure the paper is not in front of the feeder guard.
- Do not load paper above the \equiv arrow mark inside the left edge guide (➔ “Loading Paper” on page 8).
- If paper is jammed, press the \diamond **Start** button to eject the jammed paper. If the paper is not ejected, turn off the power, lift open the scanner unit, and remove any paper that is inside, including any torn pieces. Carefully reload paper, turn the power back on, and press the \diamond **Start** button.

- If paper jams frequently, make sure the left edge guide is not pushed too tightly against the paper. Try loading fewer sheets of paper.

Print quality problems

You see banding (light lines) in your printouts or copies.



- Clean the print head (➔ “Checking the print head” on page 38).
- Make sure you select the correct paper type (➔ “Selecting Paper” on page 7).
- Make sure the printable (whiter or glossier) side of the paper is face up.
- The ink cartridges may need replacing (➔ “Removing and installing ink cartridges” on page 36).
- Align the print head (➔ “Aligning the Print Head” on page 39).
- Clean the document table (➔ “Cleaning This Product” on page 40).
- If a moiré (cross-hatch) pattern appears on your copy, change the Zoom setting or shift the position of your original.

Your printout is blurry or smeared.



- Make sure the document is placed flat against the document table. If only part of the image is blurred, your original may be wrinkled or warped.
- Make sure the product is not tilted or placed on an uneven surface.
- Make sure your paper is not damp, curled, or loaded face down (the whiter or glossier printable side should be face up). Load new paper face-up.

- Use a support sheet with special paper or try loading your paper one sheet at a time.
- Load your paper one sheet at a time. Remove sheets from the output tray so not too many collect at a time.
- Align the print head (➔ “Aligning the Print Head” on page 39).
- Make several copies without placing a document on the document table.
- Use only paper recommended by Epson and genuine Epson cartridges.
- Clean the document table (➔ “Cleaning This Product” on page 40).

Your printout is faint or has gaps.

- Clean the print head (➔ “Cleaning the print head” on page 38).
- If you notice jagged vertical lines, you may need to align the print head (➔ “Aligning the Print Head” on page 39).
- The ink cartridges may be old or low on ink. Replace an ink cartridge (➔ “Replacing Ink Cartridges” on page 35).
- Make sure you select the correct paper type (➔ “Selecting Paper” on page 7).
- Make sure your paper is not damaged, old, dirty, or loaded face-down. If it is, load new paper with the whiter or glossier side face-up.

Your printout is grainy.

- Make sure you select **Best** as the quality setting.
- If you are printing or copying a photo, make sure you are not enlarging it too much. Try printing it smaller.
- Align the print head (➔ “Aligning the Print Head” on page 39).

You see incorrect or missing colors.

- Clean the print head (➔ “Cleaning the print head” on page 38).
- The ink cartridges may be old or low on ink. Replace an ink cartridge (➔ “Replacing Ink Cartridges” on page 35).
- Make sure you loaded the right paper and selected the correct setting for it on the LCD screen.
- Make sure you are not using a special effect that alters image colors, like **Sepia**.

- If your paper runs out, replace it as soon as possible. If the product is left without paper for a long period of time, the colors of your next copy or print job may be incorrect.

Your printout is too dark.



- If you are copying, press the ⌘ [Print Settings] button and adjust the **Copy Density**.

The image size or position is incorrect.

- Make sure you loaded the right paper and selected the correct setting for it on the LCD screen.
- Make sure the original is placed correctly on the document table (➔ “Placing Originals on the Document Table” on page 11).
- Clean the document table (➔ “Cleaning This Product” on page 40).

Scan quality problems

Only part of the photo is scanned.



- The scanner has non-readable areas at the edges. Move the photo away from the edges slightly.

The file size is too big.

- Try changing the quality settings.

Contacting Customer Support

Regional customer services

If your Epson product is not operating properly and you cannot solve the problem using the troubleshooting information in your product documentation, contact customer support services for assistance. If customer support for your area is not listed below, contact the dealer where you purchased your product.

Customer support will be able to help you much more quickly if you give them the following information:

- Product serial number
(The serial number label is usually on the back of the product.)
- Product model
- Product software version
(Click **About**, **Version Info**, or similar button in the product software.)
- Brand and model of your computer
- Your computer operating system name and version
- Names and versions of the software applications you normally use with your product

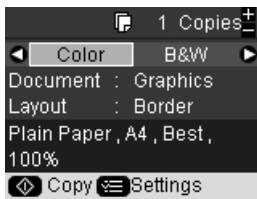
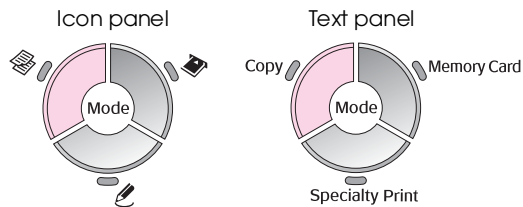
Note:

For more information on contacting customer support, see the Online User's Guide included in the software CD-ROM.

Europe	
URL	http://www.epson.com Select the Support section of your local EPSON web site for the latest drivers, FAQs, manuals and other downloadables.
Check your Pan-European Warranty Document for information on how to contact EPSON Customer support.	
Australia	
URL	http://www.epson.com.au
Telephone	1300 361 054
Fax	(02) 8899 3789
Singapore	
URL	http://www.epson.com.sg
Telephone	(65) 6586 3111
Thailand	
URL	http://www.epson.co.th
Telephone	(66)2-670-0333
Vietnam	
Telephone	84-8-823-9239
Indonesia	
URL	http://www.epson.co.id
Telephone/ Fax	Jakarta: (62) 21-62301104
	Bandung: (62) 22-7303766
	Surabaya: (62) 31-5355035/31-5477837
	Medan: (62)61-4516173
Telephone	Yogyakarta: (62) 274-565478
	Makassar: (62)411-350147/411-350148
Hong Kong	
URL	http://www.epson.com.hk
Phone	(852) 2827-8911
Fax	(852) 2827-4383
Malaysia	
URL	http://www.epson.com.my
Phone	603-56288333
India	
URL	http://www.epson.co.in
Phone	30515000
FAX	30515005/30515078
Philippines	
URL	http://www.epson.com.ph
Phone	(63) 2-813-6567
Fax	(63) 2-813-6545
E-mail	epchelpdesk@epc.epson.com.ph

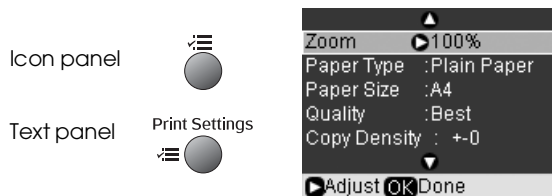
Summary of Panel Settings

Copy mode



Copies	1 to 99
Color/B&W	Color, B & W
Document	Text, Graphics, Photo
Layout	Border, Borderless, CD/DVD Copy, 2-up Copy, Repeat Copy, Repeat-4

Print settings for Copy mode

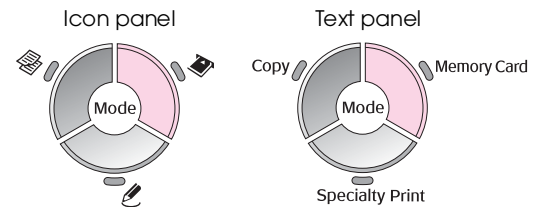


Zoom	Actual, Auto Fit Page, A4 → 10 × 15 cm, 10 × 15 cm → A4, 10 × 15 cm → 13 × 18 cm, 13 × 18 cm → 10 × 15 cm, A5 → A4, A4 → A5
Paper Type*	Plain Paper, Matte, Prem.Glossy, Ultra Glossy, Photo Paper
Paper Size**	10 × 15 cm, 13 × 18 cm, A5, A4
Quality	Draft, Standard, Best
Copy Density	-4 to + 4
Expansion	Standard, Mid, Min
CD Inner-Outer	Inner: 18 - 46 mm (Standard: 46 mm) Outer: 114 - 120 mm (Standard: 114 mm)

*If you select **CD/DVD** for Layout in the Copy mode, Paper type setting is automatically set to **CD/DVD**.

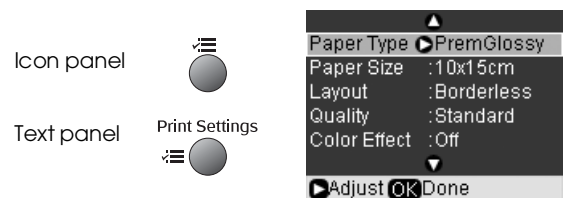
If you select **CD/DVD for Layout in the Copy mode, Paper size setting is automatically set to **CD/DVD**.

Memory Card mode



View and Print
Print All Photos
Print by Date
Print Index Sheet
Slide Show
Scan to Memory Card

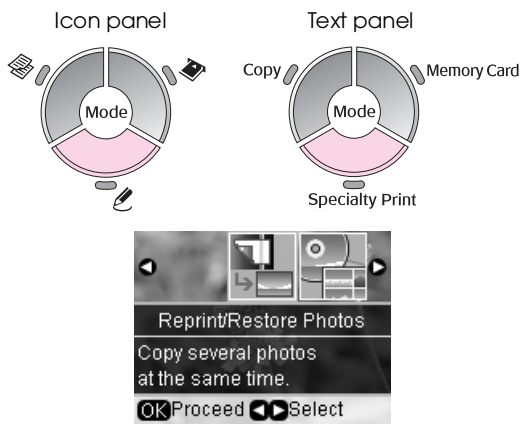
Print settings for Memory Card mode



Paper Type	Prem. Glossy, Ultra Glossy, SemiGloss, Photo Paper, Plain Paper, Matte, PQIJ, Photo Stickers
Paper Size	10 × 15 cm, 13 × 18 cm, 16:9 wide, A4
Layout	Borderless, Border, Photo ID, Upper Half, 2-up, 4-up, 8-up, 20-up, 30-up, 80-up, Stickers 16
Quality	Draft, Standard, Best
Expansion	Standard, Mid, Min
Red Eye	Off, On
Color Effect	Off, B&W, Sepia
Enhance	PhotoEnhance, P.I.M, None

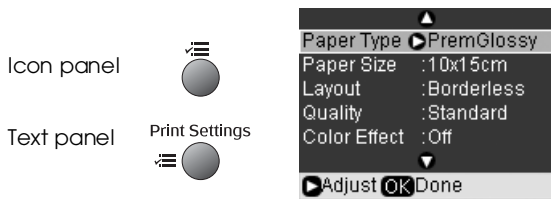
Brightness	Brightest, Brighter, Standard, Darker, Darkest
Contrast	Standard, Higher, Highest
Sharpness	Sharpest, Sharper, Standard, Softer, Softest
Saturation	Highest, Higher, Standard, Lower, Lowest
Date	None, yyyy.mm.dd, mmm.dd.yyyy, dd.mmm,yyyy
Print Info.	Off, On
Fit Frame	On, Off
Bidirectional	On, Off

Specialty Print mode



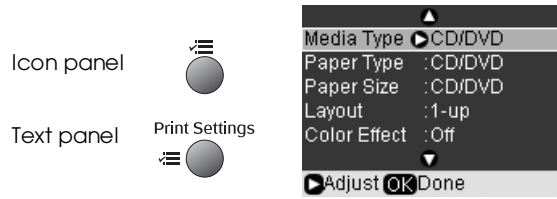
Reprint/Restore Photos
Print on CD/DVD

Print Settings for Reprint/Restore Photos



Paper Type	Prem.Glossy, Ultra Glossy, Photo Paper, Matte
Paper Size	10 × 15 cm, 13 × 18 cm, A4
Layout	Borderless, Border
Quality	Photo
Expansion	Standard, Mid, Min
Color Effect	Off, B&W

Print Settings for Print on CD/DVD



Media Type	CD/DVD	CD Jacket
Paper Type	CD/DVD, Plain Paper	Prem. Glossy, Ultra Glossy, Photo Paper, Plain Paper, Matte
Paper Size	CD/DVD	A4
Layout	1-up, 4-up, 8-up, 12-up	Jewel Upper, Jewel Index
Density	Standard, Darker, Darkest	-
Quality	-	Draft, Standard, Best
Expansion	-	Standard, Mid, Min
Red Eye	Off, On	Off, On
Color Effect	Off, B&W, Sepia	Off, B&W, Sepia
Enhance	PhotoEnhance, P.I.M, None	PhotoEnhance, P.I.M, None
CD Inner-Outer	Inner: 18 - 46 mm (Standard: 43 mm) Outer: 114 - 120 mm (Standard: 116 mm)	-
Brightness	Brightest, Brighter, Standard, Darker, Darkest	Brightest, Brighter, Standard, Darker, Darkest
Contrast	-	Standard, Higher, Highest
Sharpness	Sharpest, Sharper, Standard, Softer, Softest	Sharpest, Sharper, Standard, Softer, Softest
Saturation	Highest, Higher, Standard, Lower, Lowest	Highest, Higher, Standard, Lower, Lowest
Print Info.	-	Off, On
Fit Frame	-	Off, On

Setup mode

Icon panel



Text panel



Ink Cartridge Status		
Maintenance	Nozzle Check	
	Head Cleaning	
	Head Alignment	
	Change Ink Cartridge	
	Thick Paper	Off, On
	Screen Saver Settings	None, Memory Card Data
	Language (This function is not available for all products.)	English, French, German, Italian, Spanish, Portuguese, Dutch, Russian
Print Position	CD/DVD, Sticker	
PictBridge Setup		
Backup Memory Card	Memory Card Backup, Select Folder	
Bluetooth Settings		
Restore Default Settings		

EPSON

EXCEED YOUR VISION



Supply Ink Cartridges

Product Name	Black	Cyan	Magenta	Yellow	Light Cyan	Light Magenta
RX 560 Series	T0801	T0802	T0803	T0804	T0805	T0806
RX 590 Series	T0811 T0821	T0812 T0822	T0813 T0823	T0814 T0824	T0815 T0825	T0816 T0826