



Multimedia Storage Viewer P-5000

User's Guide

Contents

Copyright and Trademarks

Chapter 1 Introduction

Main Features	8
Important Notice	8

Chapter 2 Getting Started

Parts	9
Setting Up the Viewer	11
Turning the power on	11
Turning the power off	12
Holding the key operations	13
How to use the Home screen	13
Using the Software	14
About the software	14
Installing the software	14
Uninstalling the Software	17

Chapter 3 Transferring Data

Setting and Removing CF/SD Memory Cards	18
Inserting a CF memory card into the CF Card slot	18
Removing a CF memory card from the slot	19
Inserting an SD memory card into the SD Card slot	20
Removing an SD memory card from the slot	20
Copying Data from CF/SD Memory Cards	21
Copying all data	21
Copying particular data	22
Copying Data from USB Devices	23
Connecting a USB device	23
Copying all data	24
Copying particular data	24
Backing Up Data onto the Computer	25
Connecting the viewer to the computer	25
Launching the Epson Link2 software	26
Disconnecting the viewer from the computer	26
Backing Up Data onto Other USB Storage Devices	27
Copying Backup Files	27

Copying particular data	27
-------------------------------	----

Chapter 4 Viewing Images

Copying Data to My Photos/My Videos Folder	29
Copying from a computer.	29
Copying from Backup Files or Memory Card.	29
Photo/Video file formats supported by the viewer	30
Viewing Photos and Videos	32
How to see the screen	32
Switching the contents screen	33
Displaying information	34
About the Pop Up Menu	35
Displaying photos or videos	36
Basic operations while playing videos	38
Managing Files and Folders	39
Displaying photos as a slide show	39
Setting folders as Private	39
Changing a folder's name	40
Deleting files or folders	41
Protecting files or folders	42
Setting a folder thumbnail	43
Rating your photos	43
Setting the screen saver	44

Chapter 5 Playing Music

Transferring Audio Data from the Computer	46
Audio file formats supported by the viewer	46
Starting Playback	47
Selecting the category	47
Resume play	48
Basic operations while playing music	48
Repeat and Shuffle Play	48
Using the Features for Music	49
Audio equalizer setting	49
Deleting album tracks from the viewer	50
Creating a Playlist on the Viewer	50
About the Audio Pop Up Menu	52

Chapter 6 Customizing Settings

Changing the Viewer Settings	53
------------------------------------	----

Chapter 7 **Direct Printing**

Preparing to Print.	55
Available types of paper.	55
Printing Photos	55
Setting the number of prints in the thumbnails screen.	55
Setting the number of prints in full screen	56
Connecting to a printer.	57
Setting print details	57
Printing Videos.	58
Printer settings.	59

Chapter 8 **Viewing on a TV**

Using A/V Out	60
-------------------------	----

Chapter 9 **Maintenance and Troubleshooting**

Cleaning the Viewer.	61
Preparing the Battery.	61
Installing the battery.	61
Charging the battery	62
Removing the battery.	63
Troubleshooting.	64
Error messages/icons	64
Problems and solutions	64
Resetting the Viewer	69
Contacting Customer Support	69
Before Contacting Epson	69
Help for Users in North America	70
Help for Users in Europe	70
Help for Users in Australia	71
Help for Users in Singapore.	71
Help for Users in Thailand	72
Help for Users in Hong Kong	72
Help for Users in Malaysia	73
Help for Users in India	74
Help for Users in the Philippines	75

Appendix A **Appendix**

Standards and Approvals	76
Specifications.	79
About Optional Accessories.	81
Important Safety Instructions.	81

Warnings, Cautions, and Notes 81

Safety requirements. 88

Index

Copyright and Trademarks

No part of this publication may be reproduced, stored in a retrieval system, or transmitted in any form or by any means, electronic, mechanical, photocopying, recording, or otherwise, without the prior written permission of Seiko Epson Corporation. The information contained herein is designed only for use with this Epson product. Epson is not responsible for any use of this information as applied to other products.

Neither Seiko Epson Corporation nor its affiliates shall be liable to the purchaser of this product or third parties for damages, losses, costs, or expenses incurred by the purchaser or third parties as a result of accident, misuse, or abuse of this product or unauthorized modifications, repairs, or alterations to this product, or (excluding the U.S.) failure to strictly comply with Seiko Epson Corporation's operating and maintenance instructions.

Seiko Epson Corporation shall not be liable for any damages or problems arising from the use of any options or any consumable products other than those designated as Original Epson Products or Epson Approved Products by Seiko Epson Corporation.

Seiko Epson Corporation shall not be held liable for any damage resulting from electromagnetic interference that occurs from the use of any interface cables other than those designated as Epson Approved Products by Seiko Epson Corporation.

EPSON® is a registered trademark of Seiko Epson Corporation.

Microsoft® and Windows® are registered trademarks of Microsoft Corporation in the United States and/or other countries. Windows Media® is registered trademark of Microsoft Corporation in the United States and/or other countries.

Apple® and Macintosh® are registered trademarks of Apple Computer, Inc.

SD™ is a trademark.

QuickTime and the QuickTime logo are trademarks or registered trademarks of Apple Computer, Inc., used under license.

This product is licensed under the MPEG-4 Visual Patent Portfolio License for the personal and non-commercial use of a consumer for (i) encoding video in compliance with the MPEG-4 visual standard (MPEG-4 Video) and/or (ii) decoding MPEG-4 Video that was encoded by a consumer engaged in a personal and non-commercial activity and/or was obtained from a video provider licensed by MPEG LA to provide MPEG-4 Video. No license is granted or shall be implied for any other use. Additional information including that relating to promotional, internal and commercial uses and licensing may be obtained from MPEG LA, L.L.C. - see <www.mpegla.com>

This product is licensed under the AVC Patent Portfolio License for the personal and non-commercial use of a consumer to (i) encode video in compliance with the AVC standard (AVC Video) and/or (ii) decode AVC Video that was encoded by a consumer engaged in a personal and non-commercial activity and/or was obtained from a video provider licensed to provide AVC Video. No license is granted or shall be implied for any other use. Additional information may be obtained from MPEG LA, L.L.C. - see <www.mpegla.com>

MPEG Layer-3 audio coding technology is licensed from Fraunhofer IIS and Thomson.

Any use of this product other than consumer personal use in any manner that complies with the MPEG-2 standard for encoding video information for packaged media is expressly prohibited without a license under applicable patents in the MPEG-2 patent portfolio, which license is available from MPEG LA, L.L.C., 250 STEELE STREET, SUITE 300, DENVER, COLORADO 80206.

DivX, DivX Certified, and associated logos are trademarks of DivX, Inc. and are used under license.

Adobe[®], Adobe[®] Photoshop[®], and Adobe[®] RGB are registered trademarks of Adobe Systems Incorporated in the United States and/or other countries.

This product is protected by certain intellectual property rights of Microsoft. Use or distribution such technology outside of this product is prohibited without a license from Microsoft.

General Notice: *Other product names used herein are for identification purposes only and may be trademarks of their respective owners. Epson disclaims any and all rights in those marks.*

Chapter 1

Introduction

Main Features

With the viewer, you can easily save, view, and print images you have taken with a digital camera. You can also play videos and music. The main features are described below.

☐ **Epson Photo Fine Ultra**

Epson Photo Fine Ultra is a high-resolution, wide color gamut (Adobe RGB) liquid crystal display. You can view images easily in high resolution anywhere, anytime without a computer or other special device.

- ☐ You can play videos and music easily anywhere, anytime without a computer or other special device.
- ☐ You can print images directly with PictBridge enabled printers.
- ☐ You can save photo, video, and audio data in the viewer.

Important Notice

The viewer uses the hard disk as its storage medium. Although designed to be resistant against mechanical and electromagnetic shock, because of the hard disk's characteristics, there is a danger that data may be lost or the service life of the viewer may be adversely affected due to malfunction caused by these factors. Make sure to handle the viewer in which your valuable image data is stored with care, and store backup copies to your computer whenever possible.



Caution:

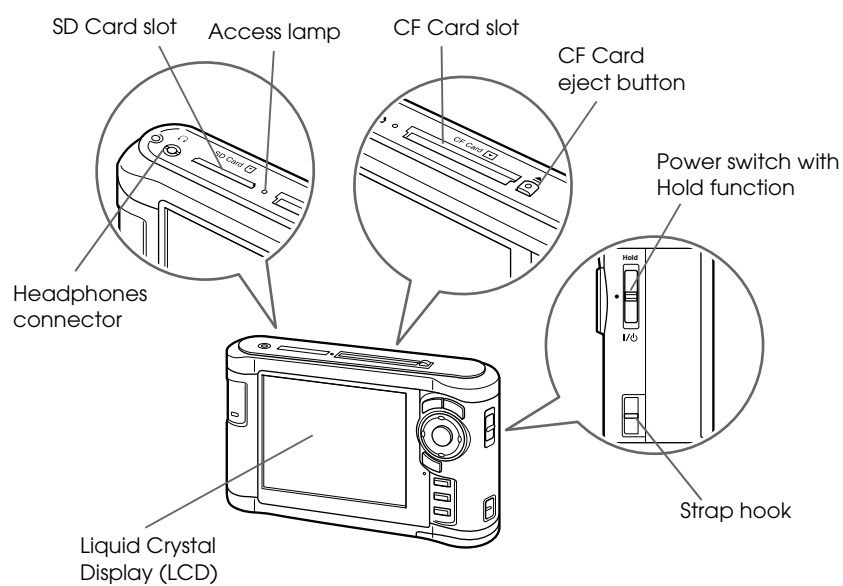
- ☐ Do not expose the viewer to any impact, doing so may cause malfunctions.
- ☐ Do NOT format the viewer's hard disk drive from your computer, as this will render the viewer inoperable. If this happens, you should contact an authorized Epson service center. Repairs will be chargeable and are not covered by Epson's warranties.

Chapter 2

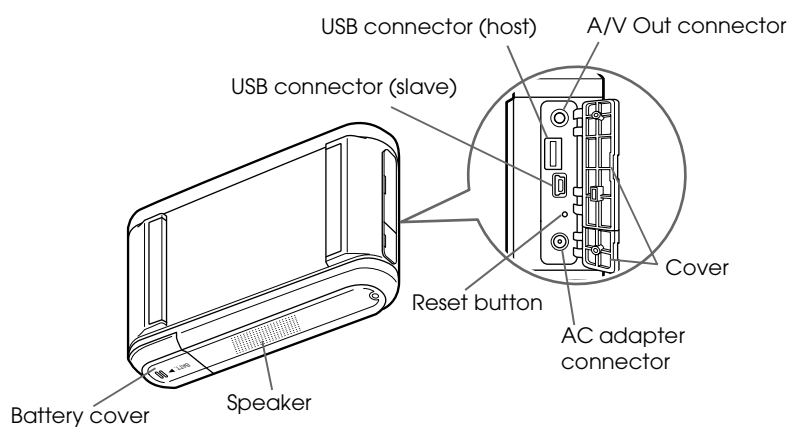
Getting Started

Parts

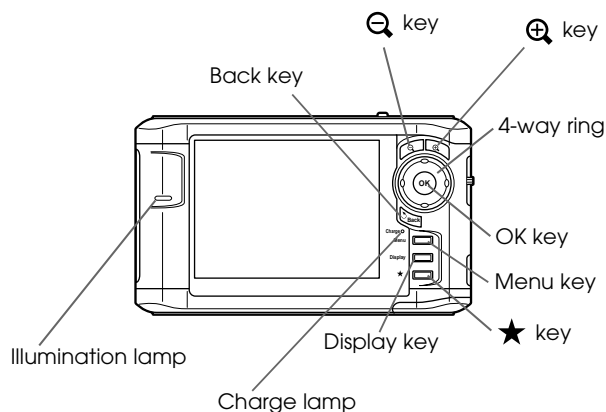
Front



Back



LCD and control panel



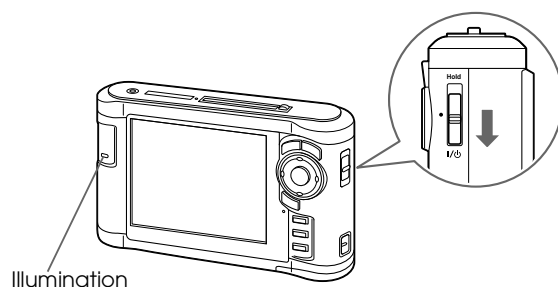
Q / Q key	Press to zoom a photo, and adjust the volume.
4-way ring (Up/ Down/Left/Right key)	Press to move the cursor or highlight. You can select an item by pressing this key to the up, down, left, or right.
OK key	Press to complete the selection and proceed to the next step.
Back key	Press to cancel the selection and return to the previous screen.
Charge lamp	Lit green during battery charging. Lit orange when a battery error has occurred.
Menu key	Press to display the pop up menu.
Display key	Press to switch the screen mode.
★ key	Press to rate a particular photo and determine the selection. For details, see "Rating your photos" (page 43).
Illumination lamp (Blue)	Flashes during operations such as turning the power on, printing, LCD power-off mode, and so on.

Setting Up the Viewer

This section describes how to turn the power on/off and use the Home screen, and so on.

Turning the power on

Slide the power switch to I/O as shown below. The power switch will return to the original position.



The **Illumination** lamp turns on.

When you turn on the viewer for the first time, the Language screen and Date and Time screen are displayed. Follow the instructions below.

1. The Language screen appears. Select the language to use with the **Up** or **Down** key, and press the **OK** key.

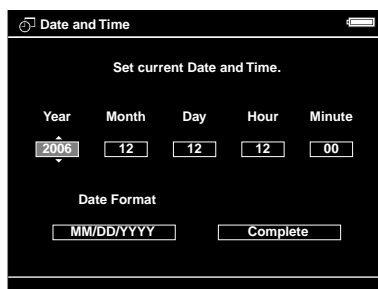


Note:

If you change the set language, you may not be able to access existing files or folders.

2. After the message saying "Set current Date and Time." appears, press the **OK** key to proceed.

- Set the date and time using the **4-way ring**.



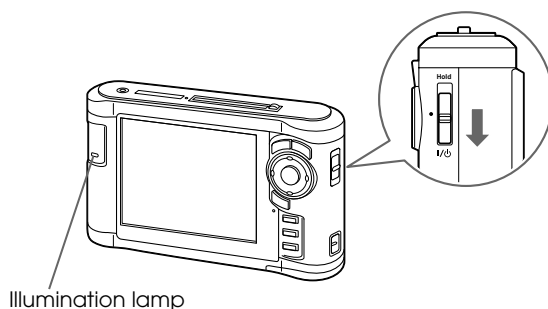
- After you finish all settings, select **Complete** using the **Right** or **Left** key, then press the **OK** key.

Note:

- ☐ If approximately 24 hours passes after battery power is cut, the date and time settings may be lost, and will need to be set again.
- ☐ If the date and time settings are erased, the Date and Time screen is displayed when you turn on the viewer next time.
- ☐ After changing the battery, make sure that the date and time is set correctly. If necessary, set the date and time again.
- ☐ You can change the settings later. For details, see "Changing the Viewer Settings" (page 53).

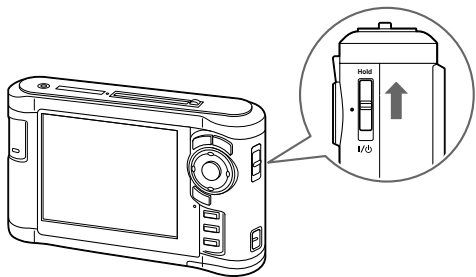
Turning the power off

- Make sure that the **Access** lamp is off.
- Slide the power switch to I/⏻ as shown below and hold it down for several seconds until the shut down display appears. The power switch will return to the original position.



Holding the key operations

You can deactivate the keys temporarily by sliding the power switch to **Hold** as shown below.

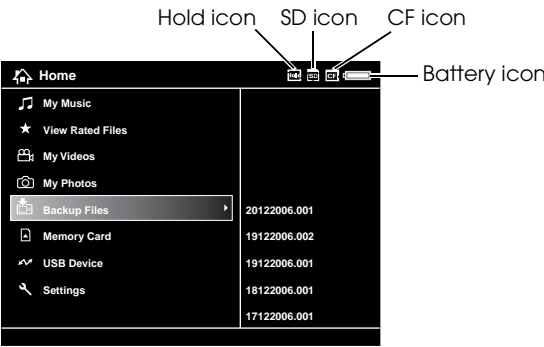


Note:

- ❑ To release **Hold**, slide the power switch back to the middle.
- ❑ Putting the key operations on hold is a useful function when carrying the viewer in your bag while listening to music with the headphones.

How to use the Home screen

When turning on the viewer, the Home screen appears first. All operations can be started from this screen.



Battery icon	Indicates the remaining charge in the battery.
CF icon	Indicates the CF memory card is set.
SD icon	Indicates the SD memory card is set.
Hold icon	Indicates the key operations are on hold. For details, see “Holding the key operations” (page 13).
My Music	Select to listen to music transferred from the computer. For details, see “Playing Music” (page 46).

View Rated Files	Select to display rated files sorted by their rating. For details, see "Rating your photos" (page 43).
My Videos	Select to display files/folders stored in the Videos folder.
My Photos	Select to display files/folders stored in the Photos folder.
Backup Files	Select to display files/folders backed up from CF/SD memory cards and a USB device.
Memory Card	Select to display files on CF/SD memory cards or store memory card data onto the viewer.
USB Device	Select to transfer data between a USB device and the viewer.
Settings	Select to set the viewer's various settings.

Battery indications:

: Indicates sufficient battery power.

: Indicates moderate battery power.

: Indicates low battery power.

: Indicates the AC adapter is connected to the viewer.

Using the Software

This section describes how to install the software on your computer. You can transfer data from the computer to the viewer easily using the Epson Link2 software.

About the software

The viewer uses the following specified software.

Epson Link2	QuickTime
-------------	-----------

Installing the software

You are required to install the data in the viewer. Connect the viewer to the computer, then install the necessary software. For details about computer connection, see "Connecting the viewer to the computer" (page 25).

For Windows users

Note:

- ☐ Do not delete the installer (EXE file) in the viewer's hard disk.
- ☐ It is recommended to back up the installer onto the computer.
- ☐ For Windows XP and Windows 2000, you need administrative privileges to install the software.

1. Connect the viewer to the computer.
2. Click **Start**, select **My Computer**, then click the viewer's hard disk drive icon.
3. Double-click the **P_XXXX_WIN_SOFTWARE** icon.

Note:

P_XXXX is the model name of your viewer.

4. Select **Desktop** to decompress the files onto, then click **Yes**.
5. On the software installation screen, click **Easy Install**.

Note:

If you are prompted to select a language, select your preferred language.

6. When the software license agreement screen appears, read the statement and then click **Agree**.
7. Select your country, then follow the on-screen instructions.
8. When a message appears indicating that installation is complete, click **Exit** or **Restart Now**.

Note:

*When **Restart Now** appears, click the button to restart your computer.*

For Macintosh users

Note:

- ☐ It is recommended to back up the installer onto the computer.
- ☐ You need administrative privileges to install the software.

1. Connect the viewer to the computer.

The viewer's hard disk icon appears on the desktop.

2. Double-click the **P_XXXX_MAC_SOFTWARE** icon in the viewer's hard disk on the desktop.

Note:

P_XXXX is the model name of your viewer.

3. Double-click the **MacOSX** icon.
4. On the software installation screen, click **Easy Install**.

Note:

If you are prompted to select a language, select your preferred language.

5. When the software license agreement screen appears, read the statement and then click **Agree**.
6. Select your country, then follow the on-screen instructions.
7. When a message appears indicating that installation is complete, click **Exit** or **Restart Now**.

Note:

*When **Restart Now** appears, click the button to restart your computer.*

Uninstalling the Software

To uninstall the Epson Link2 software, follow the procedure below. Be sure to back up any viewer installation data before deleting.

For Windows users

1. Click **Start**, point to **All Programs** (or **Programs**), then select **EPSON**. Select **Epson Link2**, then click **Epson Link2 Uninstall**.
2. After the confirmation dialog box appears, click **Yes**.
3. After a message appears indicating that uninstallation is complete, click **Finish**.

Note:

*After a message saying "Your computer needs to be restarted." appears, click **Restart Now** to restart your computer.*

For Macintosh users

1. Select **Custom Install** in step 4 of "For Macintosh users" (page 15) in "Installing the software."
2. Select **Epson Link2**.
3. On the software installation screen, select **Uninstall**.

Note:

*After a message saying "Your computer needs to be restarted." appears, click **Restart Now** to restart your computer.*

Chapter 3

Transferring Data

Transferring the data of a full memory card or other USB devices to the viewer makes it possible for you to continue taking pictures.

Setting and Removing CF/SD Memory Cards

The viewer has a CF Card slot and an SD Card slot.

This section describes how to set memory cards to copy data onto the viewer.

**Caution:**

- ☐ To use a memory card correctly, read the manuals provided with the memory card.
- ☐ Never remove a memory card while the **Access** lamp is flashing. Doing so may cause data in the card or HDD to be lost or damaged.
- ☐ Do not put stickers on memory cards. The sticker may peel off, preventing the card from being ejected and damaging the viewer.
- ☐ Avoid using or storing the card in direct sunlight, or in places that are extremely hot, humid, or dusty.

Supported types of memory cards

- ☐ CF (CompactFlash) memory card (Type2 and 3.3 V, including Micro Drive)
- ☐ SD memory card (up to 2 GB), SD High-Capacity card
- ☐ MultiMedia Card (up to 1 GB), MultiMedia Card Plus

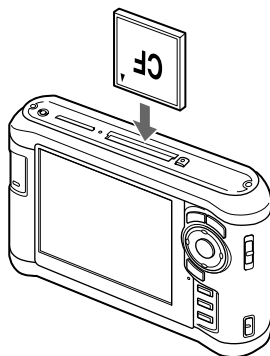
Note:

Commercially available adapters will be required to use other memory cards (miniSD, RS-MMC, Memory Stick Duo, Memory Stick PRO Duo, xD-Picture Card, and so on). Contact our customer support for details.

Inserting a CF memory card into the CF Card slot

You can insert a CF memory card (or other cards with the CF adapter) into the CF Card slot.

Insert the memory card into the memory card slot with the label side facing the display side of the viewer, then push it fully into the slot.



Note:

Insert memory cards in the correct direction. Otherwise, the memory card or the viewer may be damaged.

Removing a CF memory card from the slot

1. Make sure that the **Access** lamp is off.

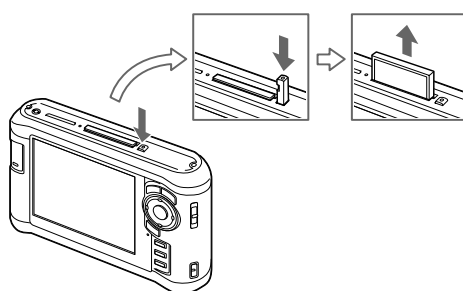


Caution:

*Never remove a memory card while the **Access** lamp flashes. Doing so may cause data in the card to be lost or damaged.*

2. Push the eject button twice.

The memory card is pushed out.



3. Pull out the memory card.

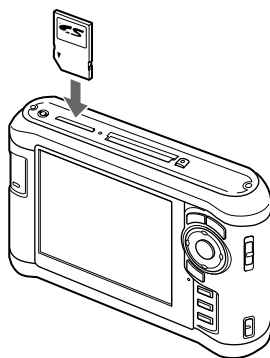
Note:

- ☐ When using a memory card set in the CF adapter, do not remove only the memory card. Disconnect the CF adapter from the viewer.
- ☐ Be sure to use the viewer with the eject button pushed in to avoid possible damage.

Inserting an SD memory card into the SD Card slot

You can insert an SD memory card, SD High-Capacity card, MultiMedia Card, or MultiMedia Card Plus into the SD Card slot.

Insert the memory card into the memory card slot with the label side facing the display side of the viewer, then push it fully into the slot.



Note:

Insert memory cards in the correct direction. Otherwise, the memory card and the viewer may be damaged.

Removing an SD memory card from the slot

1. Make sure that the **Access** lamp is off.

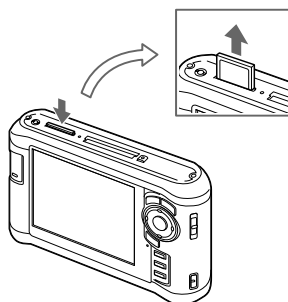


Caution:

Never remove a memory card while the **Access** lamp flashes. Doing so may cause data in the card to be lost or damaged.

2. Push the memory card down slightly.

The memory card is ejected.



3. Pull out the memory card.

Copying Data from CF/SD Memory Cards

You can copy the data from CF/SD memory cards onto **Backup Files**.

Note:

- ❑ Before copying data, charge the battery fully. If the battery is low, connect the AC adapter.
- ❑ 1GB of data may take approximately 3 to 5 minutes or more to copy, depending on the memory card you use.

Copying all data

1. Insert a CF/SD memory card.

Note:

According to the screen that appears when inserting the memory card, skip step 2.

2. Select **Memory Card** in the Home screen using the **Up** or **Down** key, then press the **OK** key.
3. In the Memory Card screen, select **CF Memory Card Backup** or **SD Memory Card Backup** using the **Up** or **Down** key.
4. Press the **OK** key to start copying.

The message saying "Backing up memory card files.." appears. After a message appears indicating that backup is complete, the backup data is displayed automatically.

Note:

The data on the memory card can be deleted after copying is complete. For details, see "Changing the Viewer Settings" (page 53).

Checking the copied data on the viewer

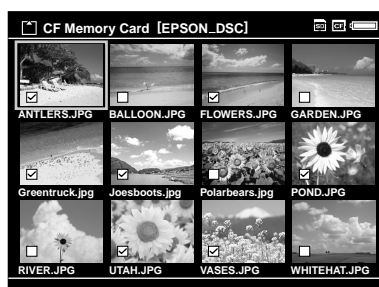
1. Select **Backup Files** in the Home screen using the **Up** or **Down** key, then press the **OK** key.
2. Select and check the folder named according to the year and date (when the data is copied), and the sequential number (e.g.: "19092006.XXX").

Note:

You can change the date format. Select **Settings** in the Home screen, then select **Date and Time**.

Copying particular data

1. Follow steps 1 and 2 of “Copying all data” (page 21).
2. In the Memory Card screen, select **Browse CF Memory Card** or **Browse SD Memory Card** using the **Up** or **Down** key.
3. Press the **OK** key to show the data on the memory card.
4. Press the **Menu** key to display the pop up menu, select **Backup** using the **Up** or **Down** key, then press the **OK** key.
5. Use the **4-way ring** and the **★** key to enter checkmarks in the check boxes of files or folders to back up, then press the **OK** key to complete.



Note:

Pressing the **Menu** key in the thumbnails screen displays the pop up menu. You can select either **Select All** or **Deselect All**, then press the **OK** key, or select **Apply** from the pop up menu.

6. Check the copied data following the steps in “Checking the copied data on the viewer” (page 21).

Note:

You can copy particular data to **My Photos** or **My Videos** directly by selecting **Copy/Move** in step 4.

Copying Data from USB Devices

You can copy data from USB devices directly using the USB Standard-A connector of the viewer. Only a USB device supporting the USB Mass Storage specification can be used. You can use the following USB storage devices capable of copying: digital cameras, external HDD drives, USB memories, and card reader/writers. You can also use the following Epson Multimedia Storage Viewers: P-2000, P-4000, P-2500, P-4500, and P-3000.

Connecting a USB device

1. Connect the AC adapter to the viewer if possible.

Note:

Some USB devices require the viewer to be powered via the AC adapter.

2. Connect the viewer and the USB device. Open the side upper cover and connect a USB cable to the Host (Standard-A) connector and the other end to the USB device, or connect a USB memory to the viewer.
3. Turn on the viewer and the USB device.

Note:

- ☐ *If the USB device has a supplied AC power cord, plug it in also, to prevent data loss while transferring.*
- ☐ *Using a USB hub is not supported.*
- ☐ *A USB device without power may not be activated.*
- ☐ *A USB device with the certification or encryption function cannot be used.*
- ☐ *When you connect a USB device to this viewer, use the USB cable supplied with the device.*
- ☐ *Do not connect USB interfaces (Host-standard A and Slave-Mini B) at the same time. It may cause a malfunction.*
- ☐ *Do not touch the Slave-Mini B connector during the USB data transfer.*

Copying all data

1. Select **USB Device** in the Home screen using the **Up** or **Down** key, then press the **OK** key.
2. Select **Backup USB device to Viewer** using the **Up** or **Down** key, then press the **OK** key.



Note:

- ❑ If the data capacity is more than 4 GB, a message appears confirming the backup.
- ❑ 1GB of data may take approximately 5 to 10 minutes or more to copy, depending on the USB device you use.

Checking the copied data on the viewer

1. Follow steps 1 and 2 of “Checking the copied data on the viewer” (page 21) in “Copying Data from CF/SD Memory Cards.”

Copying particular data

1. Select **USB Device** in the Home screen using the **Up** or **Down** key, then press the **OK** key.
2. In the USB Device screen, select **Browse USB Device** using the **Up** or **Down** key.



3. Press the **OK** key to show the data on the USB device.

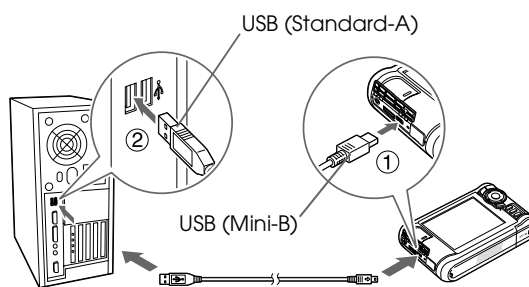
- Follow steps 4 to 6 of "Copying particular data" (page 22).

Backing Up Data onto the Computer

Connecting the viewer to the computer

If you connect the viewer to the computer, the viewer is recognized as an external HDD. Before transferring, install the software. For details, see "Installing the software" (page 14).

- Connect the AC adapter.
- Turn on the viewer and the computer.
- Open the USB connector's cover and connect the USB cable to the viewer. Then connect the other end of the USB cable to the computer.



The LCD turns off.

- Launch the Epson Link2 software. For details, see "Launching the Epson Link2 software" (page 26).

Only data that has not yet been backed up will be copied to the computer automatically. For details, see the online Epson Link2 User's Guide.

Note:

- ☐ When you view the HDD of the viewer on your computer, **BACKUP**, **MUSIC**, **PHOTOS**, and **VIDEOS** correspond to **Backup Files**, **My Music**, **My Photos**, and **My Videos** of the viewer.
- ☐ Do not change the folder name. If changed, a new, empty folder will be created in the original name, and you will need to move data to the new folder.
- ☐ Disconnect the USB cable from the viewer when not operating with a computer or printer.
- ☐ When the viewer is connected to a computer, do not connect a USB device to the Host-standard A, or touch the connector interface.

Launching the Epson Link2 software

For Windows

Click **Start**, point to **All Programs** (or **Programs**), then select **EPSON**. Select **Epson Link2**, then click **Epson Link2**.

Alternatively, click the shortcut icon of the Epson Link2 software on the desktop.

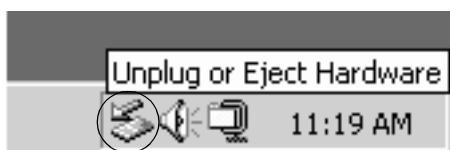
For Macintosh

Double-click the **Epson Link2** icon in the Epson Link2 folder.

Disconnecting the viewer from the computer

For Windows

1. Click **Unplug or Eject Hardware** on the computer screen.



Note:

The message differs depending on the Windows version.

2. Disconnect the USB cable from the computer.
3. Disconnect the USB cable from the viewer.

For Macintosh

1. Drag and drop the viewer icon and memory cards (if inserted) to the trash can on the computer screen.
2. Disconnect the USB cable from the computer.
3. Disconnect the USB cable from the viewer.

Backing Up Data onto Other USB Storage Devices

You can transfer the data of this viewer to USB devices. This is useful when you want to back up data in the viewer without using a computer. However, both the viewer and the USB device will require a power supply, and may take some time to transfer the data depending on the volume of data in the viewer. You can use the following USB storage devices capable of copying: external HDD drives, USB memories, and card reader/writers.

Copying Backup Files

1. Select **USB Device** in the Home screen using the **Up** or **Down** key, then press the **OK** key.
2. Select **Copy all Backup Files** using the **Up** or **Down** key, then press the **OK** key.



The data is copied as folders in **Backup Files**.

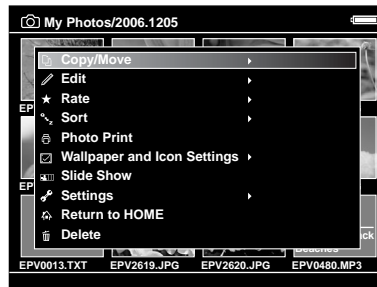
Note:

You can copy only additional folders as those which have already been copied are not copied again.

Copying particular data

1. Highlight a file or folder to copy.

2. Press the **Menu** key to display the pop up menu, select **Copy/Move** using the **Up** or **Down** key, then press the **OK** key.



3. Select **Copy to USB Device** using the **Up** or **Down** key, then press the **OK** key.
4. Use the **4-way ring** and the **★** key to enter checkmarks in the check boxes of files or folders to back up, then press the **OK** key to complete.

Note:

- ☐ Pressing the **Menu** key in the thumbnails screen displays the pop up menu. You can select either **Select All** or **Deselect All**, then press the **OK** key, or select **Apply** from the pop up menu.
- ☐ When the viewer is connected to a USB device, do not connect a computer or printer to the Slave-Mini B, or touch the connector interface.

Chapter 4

Viewing Images

Copying Data to My Photos/My Videos Folder

Copying from a computer

Using the Epson Link2 software makes it easy to copy photo and video data from a computer. For details about connecting a computer, see “Connecting the viewer to the computer” (page 25).

Note:

Use the AC adapter while connected to the computer.

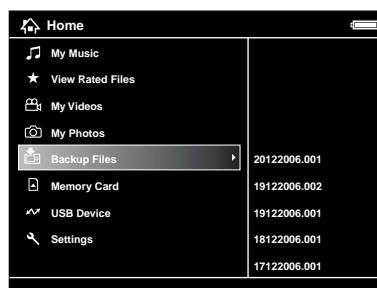
1. Connect to a computer, then open the Epson Link2 software.
2. Select **My Photos** or **My Videos** on the Epson Link2 software.
3. Select the data to transfer, then start transferring.

Note:

For details, see the online *Epson Link2 User's Guide*.

Copying from Backup Files or Memory Card

1. Select **Backup Files** or **Memory Card** in the Home screen using the **Up** or **Down** key, then press the **OK** key.



2. Highlight a file or folder to copy to **My Photos** or **My Videos**.
3. Press the **Menu** key to display the pop up menu, select **Copy/Move** using the **Up** or **Down** key, then press the **OK** or **Right** key.

4. Select **Copy to Folder** using the **Up** or **Down** key, then press the **OK** key.
5. Use the **4-way ring** and the **★** key to enter checkmarks in the check boxes of files or folders to copy, then press the **OK** key to complete.
6. Select a folder to copy to using the **4-way ring**, then press the **OK** key.
You can also create a new folder. Select **Create New Folder**, then input the folder's name. To input the folder's name, see "Changing a folder's name" (page 40).

Photo/Video file formats supported by the viewer

Photo

Supported Files	Extension	Details
JPEG*	.jpg .jpeg	Minimum size: 72 × 72 pixels Maximum size: 30 million pixels Maximum image aspect ratio: 3 : 1
RAW**	.nef .crw .erf .cr2 .mrw .pef .orf .raf .DNG***	JPEG data stored in the header of RAW files are displayed.

* The progressive JPEG format is not supported.

**The viewer supports images in RAW format taken with most digital cameras produced by Nikon, Canon, KONICAMINOLTA, PENTAX, Olympus, FUJIFILM, and Epson. Contact our customer support for details.

***The viewer supports only the JPEG preview embedded DNG format converted by Adobe DNG Converter or Adobe Photoshop.

Note:

TIFF is not supported.

Video

File Format	Video codec	Audio codec	Detail
AVI	MPEG4 (Advanced Simple Profile)	AAC G.711 (uLaw, ALaw) PCM ADPCM (G.726, IMA ADPCM)	30 fps: 720 × 480 25 fps: 720 × 576 4 Mbps (Avg.) 8 Mbps (Peak)
	Motion-JPEG	G.711 (uLaw, ALaw) PCM ADPCM (G.726, IMA ADPCM)	30 fps: 720 × 480 25 fps: 720 × 576 60 fps: 320 × 240
AVI DIVX*	DIVX** (Home Theater Profile)	MPEG Audio (MPEG 1/2 Layer I/II/III, MPEG 2.5 Layer III) PCM ADPCM (IMA ADPCM)	30fps: 720 × 480 25 fps: 720 × 576 4 Mbps (Avg.) 8 Mbps (Peak)
MOV	MPEG4 (Advanced Simple Profile)	AAC PCM	30 fps: 720 × 480 25 fps: 720 × 576 4 Mbps (Avg.) 8 Mbps (Peak)
	Motion-JPEG	G.711 (uLaw, ALaw) PCM ADPCM (G.726, IMA ADPCM)	30 fps: 720 × 480 25 fps: 720 × 576 60 fps: 320 × 240
MP4	MPEG4 (Advanced Simple Profile)	AAC PCM	30 fps: 720 × 480 25 fps: 720 × 576 4 Mbps (Avg.) 8 Mbps (Peak)
MOV MP4 M4V	H.264/AVC (Baseline Profile Level 1.2)	AAC PCM	30 fps: 320 × 240 768 kbps (Avg.) 850 kbps (Peak)
WMV***	Windows Media Video 9 (MP@LL)	Windows Media Audio 9/9.1	30 fps: 352 × 288 768 kbps (Avg.) 850 kbps (Peak)
ASF	MPEG4 (Advanced Simple Profile)	ADPCM	30 fps: 720 × 480 25 fps: 720 × 576 4 Mbps (Avg.) 8 Mbps (Peak)
MPG MPEG	MPEG1 MPEG2 (MP@ML)	MPEG Audio (MPEG 1/2 Layer I/II/III, MPEG 2.5 Layer III) PCM	30 fps: 720 × 480 25 fps: 720 × 576 8 Mbps (Avg.) 10 Mbps (Peak)
VOB MOD	MPEG2 (MP@ML)	MPEG Audio (MPEG 1/2 Layer I/II/III, MPEG 2.5 Layer III) PCM	30 fps: 720 × 480 25 fps: 720 × 576 8 Mbps (Avg.) 10 Mbps (Peak)

* Menu is not supported.

** You can see information about the DivX VOD Registration Code. Press **Settings** in the Home screen and select **Movie Setting**, then **DivX Registration Code**. This code is required when buying copyright-protected DivX VOD video content for download. Please see the distribution site for more information.

***DRM is not supported.

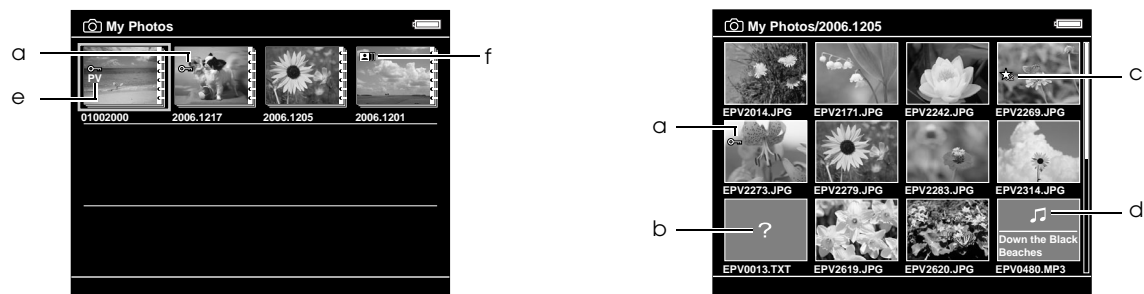
Note:

- ❑ *The maximum supportable video file size is 2 GB.*
- ❑ *Some data may not be played even if the data is supported by the viewer.*
- ❑ *DVD-Video is not supported.*

Viewing Photos and Videos

How to see the screen


The following illustrations identify the icons that appear on the screen.



a	Indicates that the file or folder is locked. For details, see "Protecting files or folders" (page 42).
b	Indicates unsupported data, such as a document.*
c	Indicates that the file is set with the rating information.
d	Indicates the file is in music format.
e	Indicates that the folder is set as a private folder.
f	Indicates that the folder is set as the screen saver.

* You can set whether unsupported files are displayed or not. The factory setting is Hide. For details, see "Changing the Viewer Settings" (page 53).

Note:

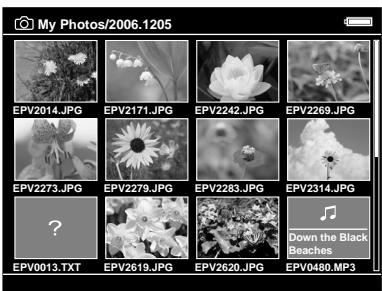
- ☐ *Thumbnails of the video files which have not been played back, or have not been played back completely are displayed with **NEW** (N) or **PAUSE** (PA) respectively.*
- ☐ *Thumbnails of the folders which have been backed up on your computer in **Backup Files** are displayed with .*
- ☐ *Files names that contain characters not supported by the viewer may be displayed as "?", and may not be accessible.*

Switching the contents screen

There are three kinds of screen to display files and folders. You can switch the following screen by pressing the **Display** key.

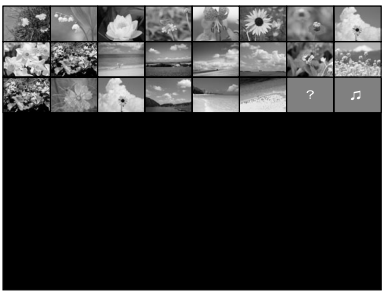
Thumbnails screen

Files or folders appear in 12 divided thumbnails.



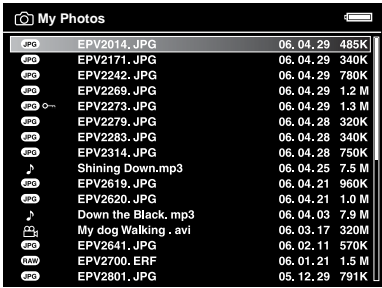
Mini-thumbnails screen

Files or folders appear in 64 divided thumbnails.



Details screen

The modify date and file size are displayed.

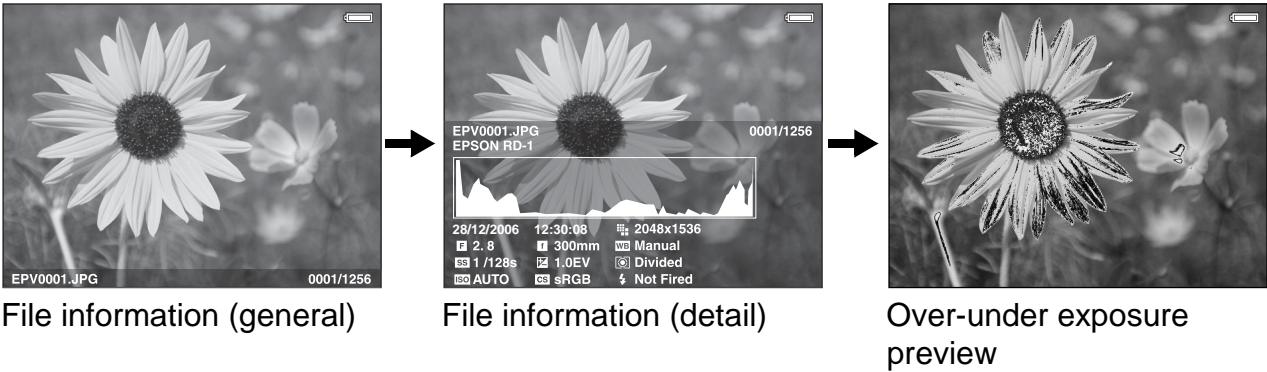


Displaying information

When viewing a photo or video, press the **Display** key to display its information.

Photo

For a photo file, no information is displayed first. You can switch to the file information (as below) by pressing **Display** key.

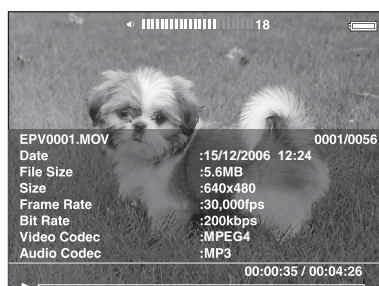


Note:

- ❑ In the over-under exposure preview, about 6% on each end of the brightness range (low and high) throughout the image shows graduated tone reversal allowing you to check exposure level. The brightest 6% of the image shows 4 grades of black, and the darkest 6% of the image shows 4 grades of white.
- ❑ Pressing the **Display** key while the over-under exposure preview appears displays the image without any information. Press the **Display** key again to return to the previous display.
- ❑ Digital camera images taken in sRGB are displayed in sRGB, and the images taken in AdobeRGB are displayed in AdobeRGB.

Video

For a video file, the progress information is displayed first. You can switch to the file information (as below) by pressing the **Display** key again.



About the Pop Up Menu

From the pop up menu displayed by pressing the **Menu** key, you can use the functions in the table below.

For photo files

Copy/Move	Copies/Moves files or folders.
Delete	Deletes files or folders.
Edit	Edits such as rotating photos, locking files, changing the folder's name, and so on.
Rating	Rates files.
Photo Print	Prints photo images.
Display photo enhance	Displays photo images utilizing the features of the wide color gamut display.
Settings	Sets LCD, Key Beep, showing private folders, setting as private, showing unsupported files, and so on.
Set as Screen Saver	Sets Screen Saver files.
Slide Show	Starts Slide Show.
Sort	Sets the order of displaying in the list.
Wallpaper and Icon Settings	Sets Wallpaper and icons of folders.

For video files

Audio Track Setting*	Sets the audio track.
Copy/Move	Copies/Moves files or folders.
Delete	Deletes files or folders.
Edit	Edits such as locking files, changing the folder's name, and so on.
Display mode	Sets the most suitable display according to the movie content.
Play Settings	Sets the display size of the video playback.
Settings	Sets LCD Brightness or Key Beep.
Sort	Sets the order of displaying in the list.
Subtitle Setting*	Sets the track subtitles.
Video Print	Prints video images.
Wallpaper and Icon Settings	Sets Wallpaper and icons of folders.

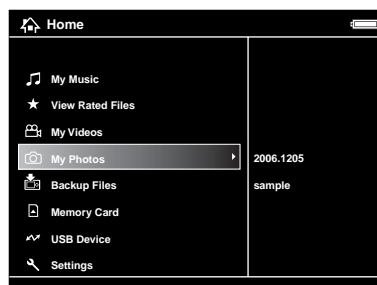
* Availability of settings depends on video file being viewed.

Note:

Different pop up menus will appear when you press the **Menu** key, depending on which screen you are viewing.

Displaying photos or videos

1. Select **My Photos** or **My Videos** in the Home screen using the **Up** or **Down** key, then press the **OK** key.



Note:

You can also select a photo or video file from **Backup Files**.

2. Select a folder to view using the **4-way ring**, then press the **OK** key. (If there is no folder, skip this step.)

Note:

You can change the folder in which to display files and subfolders. When a file or folder to move or copy to the another folder is displayed, press the **Menu** key to display the pop up menu. Select **Copy/Move** using the **Up** or **Down** key and press the **OK** key, then follow operations from step 4 in "Copying from Backup Files or Memory Card" (page 29).

3. Select a file to view using the **4-way ring**, then press the **OK** key.

Note:

When viewing photos, pressing the **Right** key displays the next image and pressing the **Left** key displays the previous image.

Functions when displaying a photo in full screen

Zooming a photo

Press the **Q** key to zoom in on a photo displayed in full screen. Continue pressing it to zoom in even further. You can move around the zoomed photo using the **4-way ring**.

Note:

- ☐ Pressing the **Q** key zooms out the photo.
- ☐ Pressing the **Back** key zooms the photo out to the full screen.
- ☐ When a photo is zoomed, pressing the **Menu** key displays the pop up menu. You can view the next or previous photo without changing the zoom by selecting **Next Photo** or **Previous Photo**.
- ☐ Pressing the **OK** key shows the navigation screen on the photo displayed in full screen. You can specify the area to zoom in by moving the navigation screen with the **4-way ring**. Press the **OK** key to zoom.

Rotating a photo

1. Press the **Menu** key to display the pop up menu, select **Edit** using the **Up** or **Down** key, then press the **OK** key.
2. Select **Rotate** using the **Up** or **Down** key, then press the **OK** key.
3. Select **Right** to rotate the image 90° clockwise or **Left** to rotate the image 90° counterclockwise using the **Up** or **Down** key, then press the **OK** key.
4. Press the **Back** key to complete.

Note:

- ❑ Photos can be rotated automatically if they have automatic rotate information and the viewer setting is set to **Auto-Rotation ON**. For details, see "Changing the Viewer Settings" (page 53).
- ❑ You cannot rotate a photo in **Backup Files**.
- ❑ You can display the other photos in the folder using the **Right** or **Left** key.

Displaying photo enhance

Pressing the **Menu** key to display the pop up menu, then selecting **Display photo enhance** enters the photo enhance mode. In this mode, the viewer discriminates someone's face or shooting scene automatically, then displays a color-optimized image on the display. Pressing the **Back** key returns the normal image display.

Basic operations while playing videos

The following table describes how the keys work while playing videos.

Key	Operation
OK	Play/Pause
Back*	Stops the video and returns to the previous screen.
⏮/⏭	Adjusts the volume.
Left/Right	Rewind/Fast-forward**

* When you press the **Back** key to stop playback, the viewer remembers the resume point for the next time you start playback. The next time you start playback, playback starts from 3 seconds before the resume point. If you want to play back the video from the beginning, press the Menu key during playback, select Play Settings, Play from Beginning, then press the OK key. This function cannot be used for a video with total playback time of 1 minute or less. (Resume does not work for some video files.)

** Rewind and fast-forward speed becomes faster if you press the Left/Right key several times while rewinding/fast-forwarding. (Rewind/Fast-Forward does not work for some video files.)

Note:

You can set the video screen size by selecting **Play at Full Screen** or **Play at Original Size** from **Play Settings** in the pop up menu. Setting **Play at Full Screen** displays the image by adjusting the longest side to the LCD display without changing the aspect ratio.

Managing Files and Folders

Displaying photos as a slide show

You can display JPEG photos as a slide show.

1. Highlight a file or folder to display as a slide show.
2. Press the **Menu** key to display the pop up menu, select **Slide Show** using the **Up** or **Down** key, then press the **OK** key.

The slide show starts.

Note:

- ☐ *The slide show effect, duration, and slide show music can be selected. Pressing the **Menu** key during the slide show enables you to set the slide show settings from the pop up menu. Alternatively, you can set the slide show settings from **Settings**. For details, see “Changing the Viewer Settings” (page 53).*
- ☐ *When slide show music is set, you can turn the volume up or down by pressing the **⊕** or **⊖** key.*

Setting folders as Private

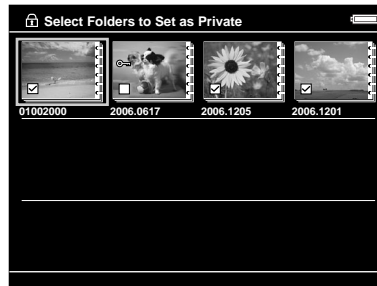
When **Show Private Folders** is set, you can select and hide folders so that other people cannot view them.

Note:

Even if folders are set as private folders on the viewer, they may still be viewed on a computer, depending on the computer setting.

1. Highlight a folder to set as a private folder.
2. Press the **Menu** key to display the pop up menu, select **Settings** using the **Up** or **Down** key, then press the **OK** or **Right** key.
3. Select **Set/Unset as Private** using the **Up** or **Down** key, then press the **OK** key.

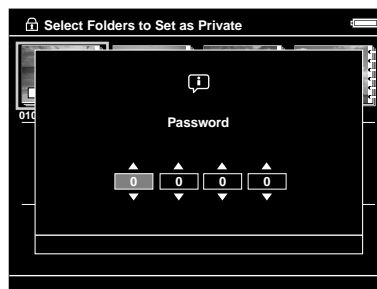
4. Use the **4-way ring** and the **★** key to enter checkmarks in the check boxes of folders to set as private folders, then press the **OK** key.



Note:

Pressing the **Menu** key in the thumbnails screen displays the pop up menu. You can select either **Select All** or **Deselect All**, then press the **OK** key, or select **Apply** from the pop up menu.

5. Enter the 4-digit password number using the **4-way ring**, then press the **OK** key to complete.



Note:

- ☐ To hide the folder set as a private folder, select **Hide Private Folders** in step 3.
- ☐ To show private folders, select **Show Private Folders** in step 3.

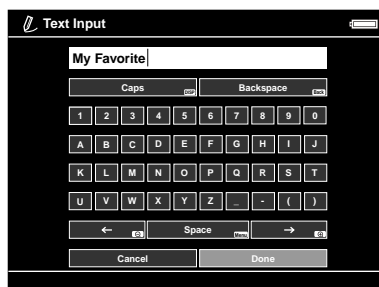
Changing a folder's name

Note:

You cannot change a file's name.

1. Highlight a folder to change the name of.
2. Press the **Menu** key to display the pop up menu, select **Edit** using the **Up** or **Down** key, then press the **OK** or **Right** key.
3. Select **Rename** using the **Up** or **Down** key, then press the **OK** key.

- The on-screen keyboard appears. Select a letter using the **4-way ring**, then press the **OK** key to input the selected letter.

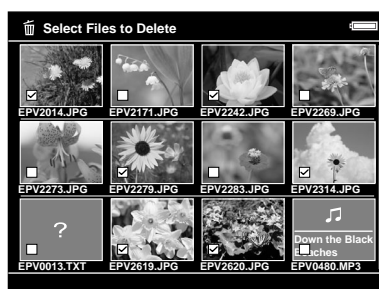


Note:

- ☐ The cursor can be moved forward/backward by pressing the \oplus/\ominus key.
 - ☐ To delete the last letter input, press the **Back** key.
 - ☐ To cancel the operation, select **Cancel** using the **4-way ring**, then press the **OK** key.
- After inputting the name, select **Done** using the **4-way ring**, then press the **OK** key to complete.

Deleting files or folders

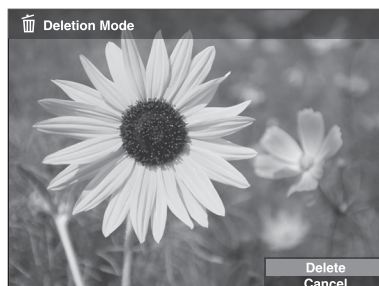
- Highlight a file or folder to delete.
- Press the **Menu** key to display the pop up menu, select **Delete** using the **Up** or **Down** key, then press the **OK** key.
- Use the **4-way ring** and the \star key to enter checkmarks in the check boxes of files or folders to delete, then press the **OK** key to complete.



Note:


Pressing the **Menu** key in the thumbnails screen displays the pop up menu. You can select either **Select All** or **Deselect All**, then press the **OK** key, or select **Apply** from the pop up menu.

When you want to delete files in full screen, press the **Menu** key to display the pop up menu, then select **Delete** to enter the deletion mode. Select **Delete** using the **Up** or **Down** key and press the **OK** key to complete. Press the **Right** or **Left** key to move to other files to delete. Select **Cancel** and press the **OK** key, or press the **Back** key to cancel the mode.

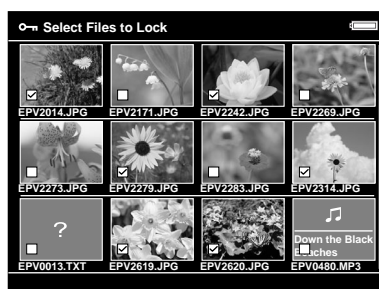


4. After the confirmation dialog box appears, select **Yes** using the **Up** or **Down** key, then press the **OK** key to delete.

Protecting files or folders

You can lock the selected file or folder. When a file or folder is locked, the  icon is displayed and it cannot be deleted or rotated.

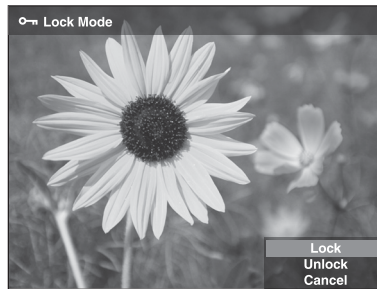
1. Highlight a file or folder to lock.
2. Press the **Menu** key to display the pop up menu, select **Edit** using the **Up** or **Down** key, then press the **OK** or **Right** key.
3. Select **Lock/Unlock** using the **Up** or **Down** key, then press the **OK** key.
4. Use the **4-way ring** and the **★** key to enter checkmarks in the check boxes of files or folders to lock, then press the **OK** key to complete. (Files or folders which have already been locked are displayed with checkmarks. Pressing the **OK** key removes the checkmark and unlocks the file or folder.)



Note:

Pressing the **Menu** key in the thumbnails screen displays the pop up menu. You can select either **Select All** or **Deselect All**, then press the **OK** key, or select **Apply** from the pop up menu.

When you want to lock files in full screen, press the **Menu** key to display the pop up menu, then select **Edit**, **Lock/Unlock** to enter the lock mode. Select **Lock** or **Unlock** using the **Up** or **Down** key and press the **OK** key to complete. Press the **Right** or **Left** key to move to other files to lock. Select **Cancel** and press the **OK** key, or press the **Back** key to cancel the mode.

**Note:**

The lock on the file or folder remains in effect until you unlock it, even if you turn off the viewer.

Setting a folder thumbnail

You can set your favorite image as wallpaper for the Home screen or a thumbnail of that folder.

1. Select an image to set.
2. Press the **Menu** key to display the pop up menu, select **Wallpaper and Icon Settings** using the **Up** or **Down** key, then press the **OK** or **Right** key.
3. Select **Set as Folder Icon** using the **Up** or **Down** key, then press the **OK** key.

Note:

Select **Set as Wallpaper of HOME** to set the image as wallpaper for the Home screen. Select **Reset wallpaper of HOME** to reset wallpaper for the Home screen to the initial setting.

Rating your photos

You can quickly view rated photo files from **View Rated Files** in the Home screen.

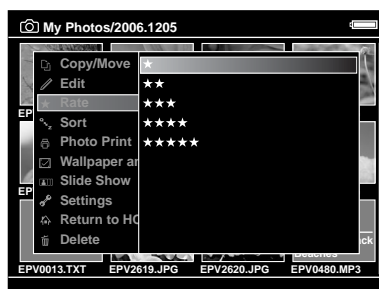
After selecting a photo file in the **My Photos** or **Backup Files**, press the ★ key. You can rate photos from ★1 to ★5.

Note:

- ☐ You cannot rate music or movie files.
- ☐ When a photo file is rated ★5, pressing the ★ key deletes its rating.
- ☐ You can rate up to 3000 files.
- ☐ To edit a file that you rated with the viewer using AdobeBridge, see the online *Epson Link2 User's Guide*.

You can also rate a photo file from the pop up menu following the steps below.

1. Highlight a file or folder to rate.
2. Press the **Menu** key to display the pop up menu, select **Rate** using the **Up** or **Down** key, then press the **OK** or **Right** key.
3. Select the rate at which to set a file using the **Up** or **Down** key, then press the **OK** key.



4. Use the **4-way ring** and the ★ key to enter checkmarks in the check boxes of files to rate, then press the **OK** key to complete.

Note:

Pressing the **Menu** key in the thumbnails screen displays the pop up menu. You can select either **Select All** or **Deselect All**, then press the **OK** key, or select **Apply** from the pop up menu.

Note:

- ☐ If you delete a file from **My Photos**, **My Videos**, or **Backup Files**, the corresponding rated file will also be deleted from **View Rated Files**.
- ☐ If you delete a file from **View Rated Files**, the original file which is in **My Photos**, **My Videos**, or **Backup Files** is not deleted, but the rating information is deleted.
- ☐ If you copy a rated file, the rating information is not copied.

Setting the screen saver

1. Highlight a folder to set as the screen saver.

2. Press the **Menu** key to display the pop up menu, select **Set as Screen Saver** using the **Up** or **Down** key, then press the **OK** key.

Note:

- ☐ *For using a screen saver, see “Changing the Viewer Settings” (page 53).*
- ☐ *To cancel the screen saver setting, select **Don't Use as Screen Saver** in step 2.*
- ☐ *The screen saver is activated only when the AC adapter is connected.*

Chapter 5

Playing Music

You can listen to music on the viewer.

Transferring Audio Data from the Computer

Using the Epson Link2 software is recommended to transfer audio data from the computer to the viewer.

1. After installing the Epson Link2 software, connect the viewer to the computer. For details, see "Connecting the viewer to the computer" (page 25).
2. Transfer files to the viewer.

Note:

- ☐ For details about the software, see the online *Epson Link2 User's Guide*.
- ☐ Only audio files transferred from a computer can be displayed in **My Music**. You cannot copy or move audio files from/to **My Music**. If you want to play an audio file copied from memory cards, select it in **Backup Files**, then press the **OK** key. The file will be played according to the play mode setting.

Audio file formats supported by the viewer

File Format	Audio Codec	Details
M4A* **	AAC (MPEG4)	Maximum bit rate: 320 kbps (48 kHz, 16 bit Stereo)
MP3*	MP3 (MPEG1/2/2.5 - Layer 3)	Maximum bit rate: 320 kbps (48 kHz, 16 bit Stereo)
WMA* **	Windows Media Audio 9	Bit rate: 48 to 192 kbps (48 kHz, 16 bit Stereo)

* Without copyright protection.

** Non-Lossless-compliant format.

Note:

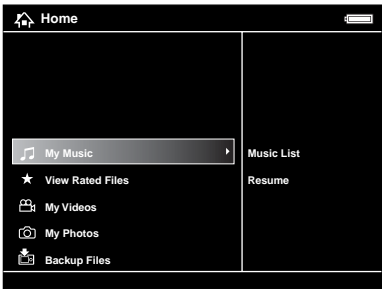
- ☐ The maximum supportable audio file size is 100 MB (up to 10,000 tracks).
- ☐ Some files may not be played back even if the files are supported by the viewer.

Starting Playback

When playing back music, you can select the category or start resume play from the beginning of the previously played track. This function is useful to narrow down your music search.

Selecting the category

- 1. Select **My Music** in the Home screen using the **Up** or **Down** key, then press the **OK** or **Right** key.



- 2. Select **Music List** using the **Up** or **Down** key, then press the **OK** or **Right** key.
- 3. Select a category to start playback using the **Up** or **Down** key, then press the **OK** or **Right** key.

You can narrow down your search by selecting the items in the following order using the **4-way ring**, if desired. Select **All** at the top of the list to include all items in the list.

Artist - Artist name - Album name - Track name
Album - Album name - Track name
Genre - Genre name - Artist name - Album name - Track name
All - Track name
Playlist* - Playlist name - Track name
Update Music List**

* For details, see “Creating a Playlist on the Viewer” (page 50).
**Select Update Music List to update audio data after transferring them from your computer.

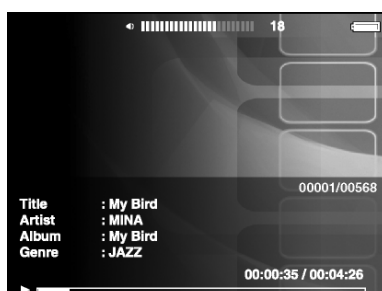
- 4. Select the desired track using the **4-way ring**, then press the **★** key to start playback.

Resume play

1. Select **My Music** in the Home screen using the **Up** or **Down** key, then press the **OK** key.
2. Select **Resume** using the **Up** or **Down** key, then press the **OK** key.

You can start resume play from the beginning of the previously played track.

Basic operations while playing music



Key	Operation
OK	Play/Pause
Back	<p>Played From from My Videos/Backup Files: Stops playback and returns to the previous screen.</p> <p>Played From from My Music: Returns to the music browse screen without stopping the music playback.</p>
⏮/⏭	Adjusts the volume.
Left/Right	Skips back/forward.*
Display	Displays Codec, Bit Rate, and Sampling Rate.**

* Pressing and holding the **Left/Right** key rewinds/fast-forwards the music.

**The information contained in the ID3 tag (the name of file, track, artist, and so on) is displayed. The ID3 tag versions up to 2.4 are compatible, and up to 127 characters are displayable.

Repeat and Shuffle Play

Press the **Menu** key to display the pop up menu in **My Music**, select **Play Mode** and set the following items using the **4-way ring** and the **OK** key.

Always select either **Shuffle** or **Normal Play Order** to set the playback order, and select the desired repeat play mode.

Repeat setting

Select	To play
No Repeat	current category once
Repeat One Song	current track repeatedly
Repeat All	current category repeatedly

Playback order setting

Select	To play
Shuffle	current category in random order
Normal Play Order	current category in normal order

Using the Features for Music

Audio equalizer setting

You can select the desired equalizer settings.

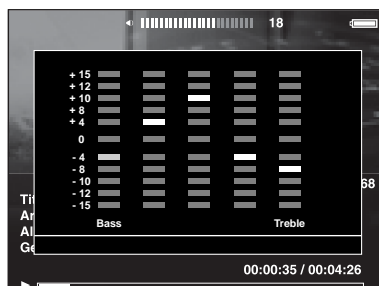
1. Press the **Menu** key to display the pop up menu in **My Music**.
2. Select **Audio Equalizer Setting**, then the desired setting, using the **Up** or **Down** key and the **OK** key.

Available equalizer settings are as follows: **Normal, Jazz, Classical, Rock, Pop, Live, Full Bass, Custom**.

3. If you select **Custom**, see "Customizing equalizer setting" below. Otherwise, press the **OK** key to complete.

Customizing equalizer setting

Selecting **Custom** in **Audio Equalizer Setting** allows you to create your own equalizer settings.



Adjust the level of each frequency using the **4-way ring**, then press the **OK** key to complete.

Deleting album tracks from the viewer

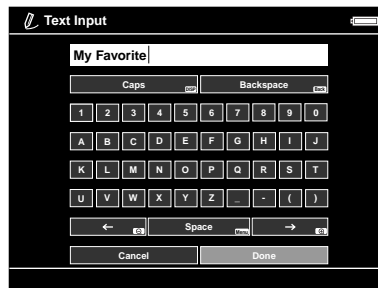
1. Press the **Menu** key to display the pop up menu in a track name list in a category.
2. Select **Delete**, audio files to delete using the **4-way ring** and the **★** key, then press the **OK** key.
3. After the confirmation dialog box appears, select **Yes** using the **Up** or **Down** key, then press the **OK** key to complete.

Creating a Playlist on the Viewer

Not only can you create a Playlist on the Epson Link2 software, you can also create them on the viewer.

1. Press the **Menu** key to display the pop up menu in a track name list in a category.
2. Select **Add to Playlist** using the **Up** or **Down** key, then press the **OK** key.
3. Select **Create New Playlist** using the **Up** or **Down** key, then press the **OK** key.

- The on-screen keyboard appears. Select a letter using the **4-way ring**, then press the **OK** key to input the selected letter.



Note:

To delete the last letter input, press the **Back** key. To cancel the operation, select **Cancel** using the **4-way ring**, then press the **OK** key.

- After inputting the name, select **Done** using the **4-way ring**, then press the **OK** key.
- Select tracks to include in the Playlist using the **4-way ring** and the **★** key.

Note:

If you want to select all the tracks to include in the Playlist, press the **Menu** key and select **Select All**.

- Press the **OK** key to complete.

To add tracks to a created Playlist

Select the desired Playlist instead of **Create New Playlist** in step 3.

To delete a Playlist/remove tracks from a Playlist

To delete a Playlist, select the desired Playlist, press the **Menu** key, then select **Delete this Playlist**.

You can remove tracks from a Playlist in the same way as you delete them from the viewer. If you select the audio files from a Playlist, they will be removed from the Playlist but not deleted from the viewer. For details, see “Deleting album tracks from the viewer” (page 50).

To change track order of a created Playlist

- Open the track list of the Playlist to change the order of.
- Select a track of which to change the order to move.
- Press the **Menu** key to display the pop up menu, then select **Change Song Order**.

4. Move the track using the **Up** or **Down** key, then press the **OK** key to complete.

About the Audio Pop Up Menu

From the pop up menu displayed by pressing the **Menu** key, you can use the functions in the table below.

Add to Playlist	Adds audio files to Playlist/Creates new Playlist.
Audio Equalizer Setting	Sets the audio equalizer.
Delete	Deletes audio files.
Play Mode	Changes playback order/Sets repeat play.
Settings	Sets LCD, Key Beep.

Note:

*Different pop up menus will appear when you press the **Menu** key, depending on which screen you are viewing.*

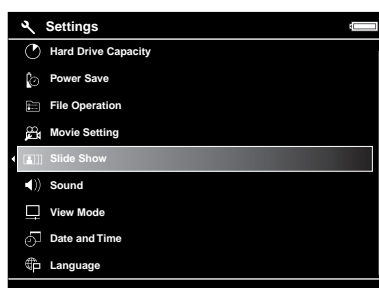
Chapter 6

Customizing Settings

You can customize various settings for displaying and copying images, or change the sound setting to make the viewer more useful.

Changing the Viewer Settings

The settings described in the following table can be configured from **Settings**. To display the menu, select **Settings** in the Home screen, then press the **OK** key. For further setting operations, use the **4-way ring** and the **OK** key.



The following table shows details of each setting.

Hard Drive Capacity	Hard Drive Capacity	CF/SD memory cards and the HDD used space is displayed with used disk space of Backup, My Photos, My Videos, and My Music.
Power Save	Backlight Timer	Sets the time at which the LCD's backlight will turn off and the LCD will go blank if there are no operations. You can select the time from 1, 3, 5, 10, 15 minutes.
	Sleep Timer	Sets the time at which the viewer will enter sleep mode if there are no operations. To deactivate sleep mode, press any key. You can select the time from 1, 3, 5, 10, 15 minutes.
	Power Off Timer	Sets the time at which the power will be shut down automatically if there are no operations, to save the battery. You can select the time from 1, 3, 5, 10, 15 minutes.
	Screen Saver	Sets the time at which the screen saver will appear if there are no operations, to save the battery. You can select the time from 1, 3, 5, 10, 15 minutes.

File Operation	Auto-Rotation	Sets whether or not to rotate the images automatically according to the EXIF information.
	Unsupported Files	Sets whether unsupported files are displayed or not.
	Delete After Copying	Sets whether or not to delete the data on the memory card or the USB device after backing up onto the viewer is complete. You can also select the Confirm Before Deleting option.
	Set Password	Sets the password for private folders. The default password is "0000."
Movie Setting	DivX Registration Code	Displays the registration code.
	Play Settings	Sets the screen size of a movie.
Slide Show	Effects*	Sets one of the five slide show effects. The slide show is executed with the selected effect.
	Duration*	Sets the duration to switch the images during a slide show. You can set the duration from 1 to 30 seconds.
	Slide Show Music*	Sets the slide show music which is played during the slide show. You can select None, one of three from the default playlist, or one from the user playlist.
	Clock*	Sets whether or not to display the clock during the slideshow.
Sound	Key Beep	Select ON or OFF to turn on or off the operation sound.
	Backup Completion Sound	Select None (no announcement), or one of the three preset sounds to announce the completion of data backup.
	Volume	Set the playback volume of audio and video.
View Mode	LCD Brightness	Changes the brightness of the LCD. Adjust the brightness using the Up or Down key.
	Video Out**	Select NTSC or PAL according to the TV system of the external display or TV to be connected to the viewer.
	Color Space (for images)	Sets the color space, if the color space information of the image is unknown. Select sRGB or AdobeRGB to display images.
Date and Time	Date and Time***	Set the date, time and date format.
Language	Language	Choose one of ten languages.
Firmware Version	Firmware Version	Displays the firmware version.

* These settings are also effective for Screen Saver.

** After changing the setting, reconnect the VIDEO cable.

***When you change the date format, the display of the date format in the Details screen, EXIF information, and the video playback screen, and so on, also changes.

Chapter 7

Direct Printing

Preparing to Print

You can print an image by connecting the viewer directly to a printer that is compatible with PictBridge.

Available types of paper

The viewer supports the following sizes and types of paper.

Paper	Size
Premium Glossy Photo Paper	4 × 6 in., 10 × 15 cm, 5 × 7 in., Letter, A4, A3, 11 × 17 in.
Premium Semigloss Photo Paper	
Ultra Glossy Photo Paper	
Glossy Photo Paper	

Note:

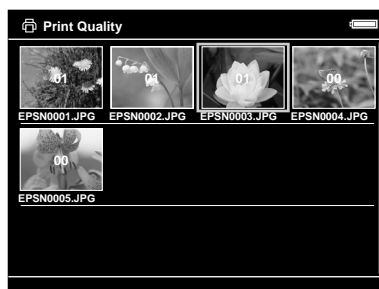
See the printer's manuals for details on the available kinds of paper and sizes.

Printing Photos

Setting the number of prints in the thumbnails screen

1. Press the **Display** key to display the thumbnails screen.
2. Select a file to print.
3. Press the **Menu** key to display the pop up menu.
4. Select **Photo Print** using the **Up** or **Down** key, then press the **OK** key.

5. Select the number of prints using the **4-way ring** and the **⊕/⊖** key, then press the **OK** key.

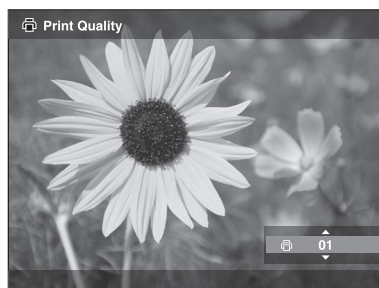


Setting the number of prints in full screen

1. Press the **Menu** key to display the pop up menu.
2. Select **Photo Print** using the **Up** or **Down** key, then press the **OK** key.
3. Select the number of prints using the **⊕/⊖** key and press the **OK** key. (You can display the other photos in the folder using the **Right** or **Left** key.)

Note:

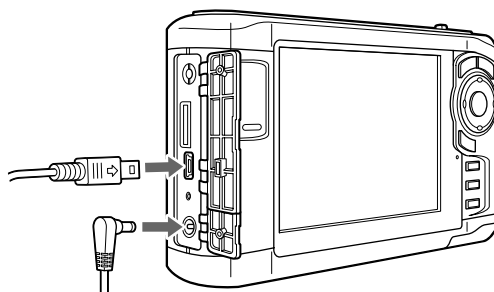
Pressing the **Display** key enters the print preview mode. You can check the print color in the case of selecting "PhotoEnhance6" with an Epson printer. However, the print result will differ according to the printer. Pressing the **Back** key returns to the normal mode.



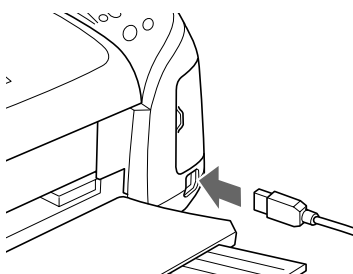
The viewer starts checking the printer connection.

Connecting to a printer

1. Connect the USB cable and the AC adapter to the viewer.



2. Connect the other end of the USB cable to the connector on the printer.

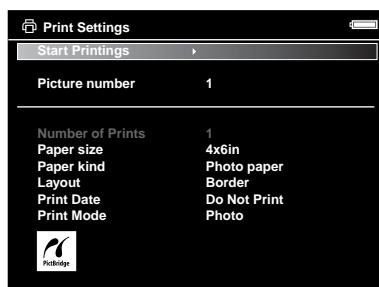


Note:

- ☐ See the printer's manual for the location of the cable connector on the printer.
- ☐ Disconnect the USB cable from the viewer when not operating with a computer or printer.
- ☐ When the viewer is connected to a printer, do not touch the Host-standard A connector interface. The viewer's operation may become unstable.

Setting print details

1. In the Print Settings screen, make the appropriate settings using the **Up** or **Down** key, then press the **OK** key.



Note:

❑ For details of each setting, see “Printer settings” (page 59).

❑ The settings you made will be cleared when the image has finished printing.

2. Select **Start Printing** using the **Up** or **Down** key, then press the **OK** key to complete.

Printing starts.

Printing Videos

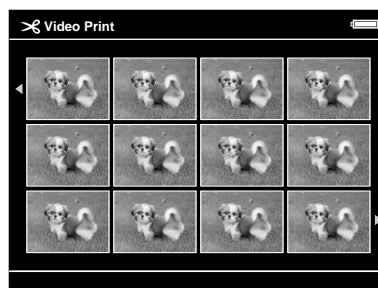
You can also print images from the Video files.

1. Select a video to print and start playback.

Note:

*For accurate scene selection, press the **OK** key to pause, then back/advance frame-by-frame to the desired point using the **Left/Right** key.*

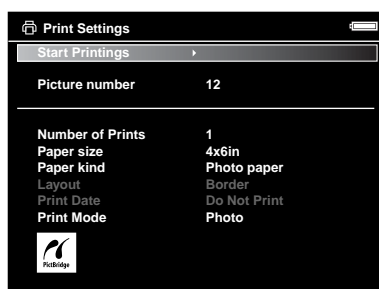
2. Press the **Menu** key in the scene to print to display the pop up menu.
3. Select **Video Print** using the **Up** or **Down** key, then press the **OK** key.
4. Select one of the **Frame Interval: Long, Medium, or Short** to take still images from the video.
5. Select the start of the frames to print using the **Right** or **Left** key, then press the **OK** key.



The viewer starts checking the printer connection.

6. Connect the viewer to a printer. For details, see “Connecting to a printer” (page 57).

7. In the Print Settings screen, make the appropriate settings using the **Up** or **Down** key, then press the **OK** key.



Note:

The settings you made will be cleared when the image has finished printing.

8. Select **Start Printing** using the **Up** or **Down** key, then press the **OK** key to complete.

Printing starts.

Printer settings

Setting	Detail
Number of Prints	Sets the number of prints.
Paper Size*	Sets the size of paper to use (for video prints 4 × 6-inch paper only).
Paper Kind*	Sets the kind of paper to use.
Layout	Sets the layout of the printed images (for video prints 12 images per paper only).
Print Date** (Printing photos only.)	Sets whether or not to print the date when the photo was taken.
Print Mode	Sets the print mode.

* Depending on the printer, you cannot select the paper as the setting is set to Auto.

** If the photo does not include date information, the date of the file is printed.

Chapter 8

Viewing on a TV

Using A/V Out

The viewer has an A/V Out connector. You can play slide shows and videos on an external monitor by connecting the viewer to a monitor device, such as a TV, that has a video input connector.

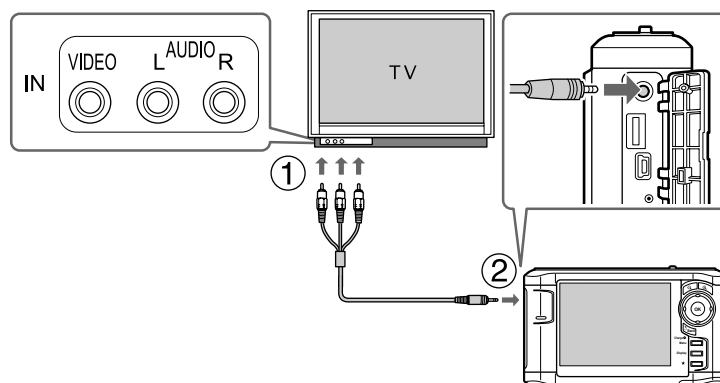
Follow the instructions below to view photos or play videos on TV.

1. Set the Video Out setting on the viewer to the signal format of your TV.

Note:

For details about the Video Out setting, see “Changing the Viewer Settings” (page 53).

2. Connect a commercially available AV cable to the TV. Then connect the other end of the AV cable to the viewer.



3. Set the TV display to video input from the viewer.

Note:

- ☐ The LCD turns off when you connect an AV cable to the viewer.
- ☐ Some monitors cannot display full images and the top and bottom parts may be missing.
- ☐ For information on available cables, contact our customer support.

Chapter 9

Maintenance and Troubleshooting

Cleaning the Viewer

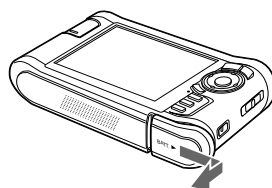
To keep the viewer operating at its best, you should clean it thoroughly several times a year. Before you perform any maintenance on the viewer, be sure to read the “Important Safety Instructions” (page 81), then follow these guidelines.

- ☐ Be sure to turn off before cleaning.
- ☐ Use a clean, dry cloth to keep the viewer free of dust.
- ☐ Do not use harsh or abrasive cleaners.
- ☐ If necessary, clean the battery contacts with a dry cloth.

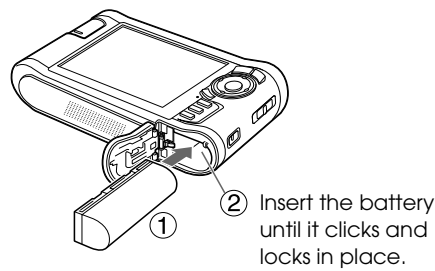
Preparing the Battery

Installing the battery

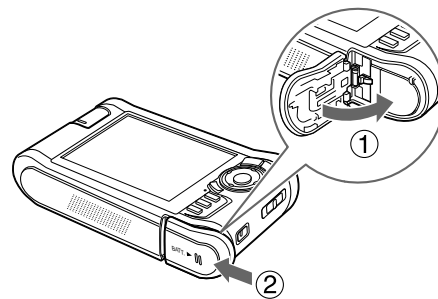
1. Open the battery cover as shown below.



2. Insert the battery into the compartment in the direction of the arrow on the battery sticker.



3. Close the battery cover and slide it to the left until it clicks.



Charging the battery

After installing the battery, connect the AC adapter. The installed battery will be automatically charged.

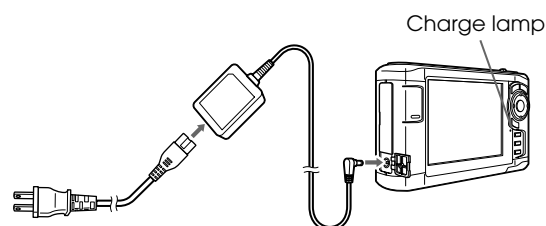
1. Make sure that the battery is installed.



Caution:

Do not connect the AC adapter when the battery is not installed. Doing so may cause the viewer to be damaged.

2. Connect the AC adapter as shown below, then plug the other end into a power outlet.



The **Charge** lamp lights green during charging. When the battery is fully charged, the **Charge** lamp turns off. It takes about 3.5 hours to fully charge the battery when the power is off, more time if the viewer is in use.

Note:

- ❑ The viewer stops charging if the battery becomes hot when operating it during charging. In that case, it starts charging again when it cools down.
- ❑ If the Charge lamp lights orange, see “Troubleshooting” (page 64).

Removing the battery

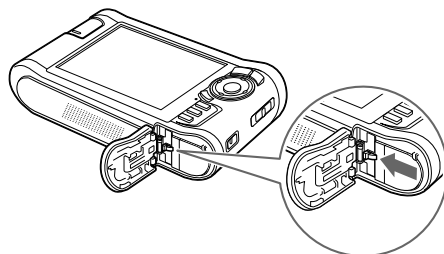
1. Make sure that the viewer is turned off.



Caution:

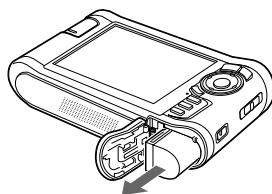
- ❑ Remove the AC adapter if connected.
- ❑ Never remove the battery while turned on. Doing so may cause data in the card or HDD to be lost or damaged.

2. Open the battery cover.
3. Push the catch down.



The battery is pushed out.

4. Pull out the battery, then close the battery cover.






Warning:

Do not carry loose batteries in your pocket.

Troubleshooting

When a problem occurs, an error message or icon usually appears in the LCD. Refer to the following section to solve the problem.

Error messages/Icons

Error message/Icon	Description
Unable to access file.	Wait until the Access lamp turns off, then reinsert the memory card and try again. Check if there is no data damaged.
An error occurred during verification. Files were not deleted from the memory card.	Some files failed to be copied. Check the data.
Cannot access the hard drive. There may be a problem with the hard drive, or it may not be formatted as FAT32.	Back up all the data to onto the computer and send the viewer to an authorized Epson service center. (The data on the viewer will be deleted.) Repairs will be chargeable and are not covered by Epson's warranties.
No response from the printer. Please check the printer.	Make sure of the following. <ul style="list-style-type: none"> - Your printer is on. - The USB cable is connected correctly. - The cable supplied with the viewer is used. - Your printer is compatible with PictBridge. Check your printer and printer's manual.
	Wait until the viewer cools down.
	The battery power is running out. Charge the battery. For details, see "Charging the battery" (page 62).
 Press Reset	Press the reset button. See "Resetting the Viewer" (page 69) to find how to use the Reset button.

Problems and solutions

Use the information in this section to find the source of and solution to problems.

Power supply problems

The power does not turn on.

Cause	What to do
The battery is set incorrectly.	Make sure that the battery is installed correctly. See "Charging the battery" (page 62).
The battery has run out.	See "Troubleshooting" (page 64) and charge the battery.

The Charge lamp lights orange.

Cause	What to do
The battery is not inserted.	Insert the battery into the viewer.
The viewer becomes hot.	Turn off the power, disconnect the AC adapter, stop charging and wait more than 30 minutes, then connect the AC adapter again to restart charging. The Charge lamp still lights orange, contact our customer support.

Viewing and playback problems

Cannot access data.

Cause	What to do
The name of a file or folder is not supported by the set language.	Rename the file or folder to access.

The data is not displayed.

Cause	What to do
The photo, video, or audio file you selected is not supported.	See "Photo/Video file formats supported by the viewer" (page 30) or "Audio file formats supported by the viewer" (page 46) and make sure the data is supported. Also, check the codec of the data if you are trying to display a video file. You can convert and transfer video and audio files with the Epson Link2 software.
The data is broken.	Copy the data again.
The LCD Brightness setting is too dark.	See "Changing the Viewer Settings" (page 53) and make sure the LCD Brightness setting is set properly.
The video cable is connected to the viewer.	Disconnect the video cable to display the LCD.

The color space information cannot be recognized.**Cause**

The color space information cannot be recognized with the viewer if you edit the image with image edit software.

What to do

Set the color space from **Settings**. For details, see "Changing the Viewer Settings" (page 53).

The movie is not displayed clearly or stops abruptly.**Cause**

The bit rate of the data is too high.

What to do

Check the bit rate. For details, see "Photo/Video file formats supported by the viewer" (page 30). You can convert and transfer video files with the Epson Link2 software.

Sound breaks off when the video or audio is played.**Cause**

The bit rate of the file is too high.

What to do

Check the bit rate. For details about video files, see "Photo/Video file formats supported by the viewer" (page 30). For details about audio files, see "Audio file formats supported by the viewer" (page 46). You can convert and transfer video and audio files with the Epson Link2 software.

No sound comes out when a video is played.**Cause**

The Audio Codec of the data is not supported.

What to do

Check the audio codec and the volume. For details about audio codec, see "Photo/Video file formats supported by the viewer" (page 30). You can convert and transfer video files with the Epson Link2 software.

Operation problems

Cannot use the keys on the viewer.

Cause	What to do
The keys are deactivated because the power switch is set to Hold .	Check if the power switch is not set to Hold . If so, slide the power switch back to the middle.

Cannot access the existing folders.

Cause	What to do
The set language does not support the folders' language.	Renaming the folder correctly enables you to access it. Alternatively, change the language setting. For details, see "Changing the Viewer Settings" (page 53).

Cannot copy.

Cause	What to do
The space available on the HDD is not sufficient to copy all of the data in the memory card, or the file may be damaged.	Delete unnecessary data in the HDD, reduce the size of data to copy from the memory card, or try to copy a different file.
The set language does not support the files' language.	Renaming the file correctly enables you to access it. Alternatively, change the language setting. For details, see "Changing the Viewer Settings" (page 53).
Copy cannot be started as the USB device connection cannot be recognized because the USB device has lost power.	Connect the AC adapter to the USB device. Alternatively, make sure that the viewer is connected to the AC adapter correctly.

Cannot delete.

Cause	What to do
The file is locked. Alternatively, the file existing in the folder or subfolder is locked.	See "Protecting files or folders" (page 42) and unlock the file to delete it.

Cannot increase the hard drive capacity of the viewer even if deleting files.

Cause	What to do
Check if data was deleted without using the Epson Link2 software on the computer. Even if deleting data in the viewer on the computer, if the data has not been deleted completely, hard drive capacity of the viewer cannot be increased.	After connecting the viewer to the computer, delete all the data in "Recycle Bin" (Windows) or "Trash" (Macintosh).

Cannot set/unset as a private folder.

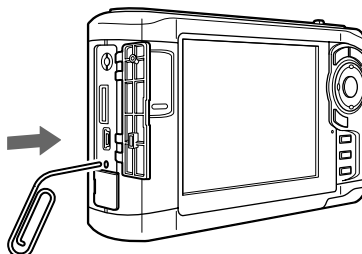
Cause	What to do
The password is wrong.	If you forget the password, enter "5555", "7777", then "3333" to reset the default password ("0000").

Printing problems**Cannot print.**

Cause	What to do
The printer is not supported.	See "Preparing to Print" (page 55) and make sure that your printer supports PictBridge.
The printer's power is off.	Turn on the printer.
The USB cable is not connected correctly.	See "Connecting to a printer" (page 57) and reconnect the viewer to the printer.
The file is damaged.	Try to print a different file.
If you connect the viewer to a printer with the Home screen displayed, printing will not occur as the printer is recognized as a computer.	Connect the viewer to the printer after selecting an image to print. For details, see "Printing Photos" (page 55) or "Printing Videos" (page 58).

Resetting the Viewer

When an error occurs and operations cannot be done, you can reset the viewer by pressing the **Reset** button with a thin object as shown below.



Note:

Avoid using the fragile objects such as pencil.

Contacting Customer Support

Before Contacting Epson

If your Epson product is not operating properly and you cannot solve the problem using the troubleshooting information in your product documentation, contact customer support services for assistance. If customer support for your area is not listed below, contact the dealer where you purchased your product.

Customer support will be able to help you much more quickly if you give them the following information:

- ☐ Product serial number
(The serial number label is usually on the back of the product.)
- ☐ Product model
- ☐ Product software version
(Click **About**, **Version Info**, or similar button in the product software.)
- ☐ Brand and model of your computer
- ☐ Your computer operating system name and version
- ☐ Names and versions of the software applications you normally use with your product

Help for Users in North America

Epson provides the technical support services listed below.

Internet Support

Visit Epson's support website at <http://support.epson.com> and select your product for solutions to common problems. You can download drivers and documentation, get FAQs and troubleshooting advice, or e-mail Epson with your questions.

Speak to a Support Representative

Dial: (562) 276-1300 (U.S.), or (905) 709-9475 (Canada), 6 AM to 6 PM, Pacific Time, Monday through Friday. Toll or long distance charges may apply.

Before you call Epson for support, please have the following information ready:

- ☐ Product name
- ☐ Product serial number
- ☐ Proof of purchase (such as a store receipt) and date of purchase
- ☐ Computer configuration
- ☐ Description of the problem

Note:

For help using any other software on your system, see the documentation for that software for technical support information.

Purchase Supplies and Accessories

You can purchase genuine Epson ink cartridges, ribbon cartridges, paper, and accessories from an Epson authorized reseller. To find the nearest reseller, call 800-GO-EPSON (800-463-7766). Or you can purchase online at <http://www.epsonstore.com> (U.S. sales) or <http://www.epson.ca> (Canadian sales).

Help for Users in Europe

Check your **Pan-European Warranty Document** for information on how to contact EPSON Customer support.

Help for Users in Australia

Epson Australia wishes to provide you with a high level of customer service. In addition to your product documentation, we provide the following sources for obtaining information:

Your Dealer

Don't forget that your dealer can often help identify and resolve problems. The dealer should always be the first call for advice on problems; they can often solve problems quickly and easily as well as give advice on the next step to take.

Internet URL <http://www.epson.com.au>

Access the Epson Australia World Wide Web pages. Worth taking your modem here for the occasional surf! The site provides a download area for drivers, Epson contact points, new product information and technical support (e-mail).

Epson Helpdesk

Epson Helpdesk is provided as a final backup to make sure our clients have access to advice. Operators on the Helpdesk can aid you in installing, configuring and operating your Epson product. Our Pre-sales Helpdesk staff can provide literature on new Epson products and advise where the nearest dealer or service agent is located. Many types of queries are answered here.

The Helpdesk numbers are:

Phone: 1300 361 054

Fax: (02) 8899 3789

We encourage you to have all the relevant information on hand when you ring. The more information you prepare, the faster we can help solve the problem. This information includes your Epson product documentation, type of computer, operating system, application programs, and any information you feel is required.

Help for Users in Singapore

Sources of information, support, and services available from Epson Singapore are:

World Wide Web (<http://www.epson.com.sg>)

Information on product specifications for download, Frequently Asked Questions (FAQ), Sales Enquiries, and Technical Support via e-mail are available.

Epson HelpDesk (Phone: (65) 6586 3111)

Our HelpDesk team can help you with the following over the phone:

- ☐ Sales enquiries and product information
- ☐ Product usage questions or problem
- ☐ Enquiries on repair service and warranty

Help for Users in Thailand

Contact for information, support, and services are:

World Wide Web (<http://www.epson.co.th>)

Information on product specifications, Frequently Asked Questions (FAQ), and e-mail are available.

Epson Hotline (Phone: (66)2-670-0333)

Our Hotline team can help you with the following over the phone:

- ☐ Sales enquiries and product information
- ☐ Product usage questions or problem
- ☐ Enquiries on repair service and warranty

Help for Users in Hong Kong

To obtain technical support as well as other after-sales services, users are welcome to contact Epson Hong Kong Limited.

Internet Home Page

Epson Hong Kong has established a local home page in both Chinese and English on the Internet to provide users with the following information:

- ☐ Product information
- ☐ Answers to Frequently Asked Questions (FAQs)

- ☐ Latest versions of Epson product drivers

Users can access our World Wide Web home page at:

<http://www.epson.com.hk>

Technical Support Hotline

You can also contact our technical staff at the following telephone and fax numbers:

Phone: (852) 2827-8911

Fax: (852) 2827-4383

Help for Users in Malaysia

Contacts for information, support, and services are:

World Wide Web (<http://www.epson.com.my>)

- ☐ Information on product specifications, drivers for download
- ☐ Frequently Asked Questions (FAQ), Sales Enquiries, questions through e-mail

Epson Trading (M) Sdn. Bhd.

Head Office.

Phone: 603-56288288

Fax: 603-56288388/399

Epson Helpdesk

- ☐ Sales enquiries and product information (Infoline)

Phone: 603-56288222

- ☐ Enquiries on repair services & warranty, product usage and technical support (Techline)

Phone: 603-56288333

Help for Users in India

Contacts for information, support, and services are:

World Wide Web (<http://www.epson.co.in>)

Information on product specifications, drivers for download, and products enquiry are available.

Epson India Head Office - Bangalore

Phone: 080-30515000

Fax: 30515005

Epson India Regional Offices:

Location	Telephone number	Fax number
Mumbai	022-28261515 /16/17	022-28257287
Delhi	011-30615000	011-30615005
Chennai	044-30277500	044-30277575
Kolkata	033-22831589 / 90	033-22831591
Hyderabad	040-66331738/ 39	040-66328633
Cochin	0484-2357950	0484-2357950
Coimbatore	0422-2380002	NA
Pune	020-30286000 /30286001/30286002	020-30286000
Ahmedabad	079-26407176 / 77	079-26407347

Helpline

For Service, Product info or to order a cartridge - 18004250011 (9AM - 9PM) - This is a Toll-free number.

For Service (CDMA & Mobile Users) - 3900 1600 (9AM - 6PM) Prefix local STD code

Help for Users in the Philippines

To obtain technical support as well as other after sales services, users are welcome to contact the Epson Philippines Corporation at the telephone and fax numbers and e-mail address below:

Phone: (63) 2-813-6567

Fax: (63) 2-813-6545

E-mail: epchelpdesk@epc.epson.com.ph

World Wide Web (<http://www.epson.com.ph>)

Information on product specifications, drivers for download, Frequently Asked Questions (FAQ), and E-mail Enquiries are available.

Epson Helpdesk (Phone: (63) 2-813-6567)

Our Hotline team can help you with the following over the phone:

- ☐ Sales enquiries and product information
- ☐ Product usage questions or problems
- ☐ Enquiries on repair service and warranty

Appendix A

Appendix

Standards and Approvals

P-5000 (Model: G961B)

U.S. model:

EMC	FCC Part 15 Subpart B Class B CAN/CSA-CEI/IEC CISPR22 Class B
Safety	UL 60950-1 CSA No.60950-1

European model:

EMC Directive 89/336/EEC	EN 55022 Class B EN 55024 EN 61000-3-2 (Use with AC adapter) EN 61000-3-3 (Use with AC adapter)
-----------------------------	--

European model (Russia):

EMC and Safety	GOST-R (IEC60950-1, CISPR 22)
----------------	----------------------------------

Korean model:

EMC	KN 22 Class B KN 61000-4-2/-3/-4/-5/-6/-11
-----	---

Australian model:

EMC	AS/NZS CISPR22 Class B
-----	------------------------

Taiwan model:

EMC and Safety	CNS13438 Class B CNS14336 (IEC60950)
----------------	---

Chinese model:

EMC and Safety	GB8898 GB13837 Class B GB17625.1
----------------	--

AC adapter (Model: A351H)

U.S. model:

Safety	UL60950-1 CSA C22.2 No.60950-1
EMC	CAN/CSA-CEI/IEC CISPR22 Class B

European model:

Low Voltage Directive 73/23/EEC EMC Directive 89/336/EEC	EN 60950-1 EN 55022 Class B EN 55024 EN 61000-3-2 EN 61000-3-3
---	--

European model (Russia):

EMC and Safety	GOST-R (IEC60950, CISPR 22)
----------------	--------------------------------

Korean model:

Safety	K60950 KN14 KN14-1
--------	--------------------------

Singapore model:

Safety	IEC60950
--------	----------

Australian model:

Safety	AS/NZS 60950.1
EMC	AS/NZS CISPR22 Class B

Taiwan model:

EMC and Safety	CNS13438 Class B CNS14336 (IEC60950)
----------------	---

Chinese model:

EMC and Safety	GB4943 GB9254 GB17625.1
----------------	-------------------------------

Battery (Model: D111A)

U.S. model:

Safety	UL2054
--------	--------

European model:

EMC Directive 89/336/EEC	EN 55022 Class B EN 55024
-----------------------------	------------------------------

Australian model:

EMC	AS/NZS CISPR22 Class B
-----	------------------------

Specifications

General

Display	LCD (Liquid Crystal Display) 4.0 inch 640 × R-YG-B-EG × 480 dots (Dot pitch 0.032 mm × 4 × 0.128 mm), (R: Red, YG: Yellow Green, B: Blue, EG: Emerald Green), Approx. 16,770,000 colors
HDD	2.5" HDD (73.8 GB) FAT12/16/32 VFAT supported
Dimensions and weight	Height: 88.7 mm (3.5 inches)* Width: 150 mm (5.9 inches)* Depth: 33.1 mm (1.3 inches)* Weight: Approx. 438 g (1.0 lb) (including the battery)
Temperature	Operating: 5 to 35°C** Non-operating: -20 to 60°C
Humidity (without condensation)	Operating: 30 to 80%** Non-operating: 10 to 80%
Altitude	Operating: 3000 m or less Non-operating: 12000 m or less
Memory card***	CompactFlash memory card (Type2 and 3.3 V, including MicroDrive), SD memory card, SD High-Capacity card, MultiMedia Card, MultiMedia Card Plus
Power sources	Lithium-ion battery (Model: D111A) AC adapter (Model: A351H)
Battery life (when fully charged) ****	Approx. 3 hours when playing a slide show (in the default settings) Approx. 3 hours when playing video (MPEG4, 2 Mbps, using the headphones) Approx. 6 hours when playing audio (MP3, 128 kbps, using the headphones)

* Dimensions do not include projections.

** Charging is recognized as operating.

*** Commercially available adapters will be required to use other memory cards (miniSD, RS-MMC, Memory Stick Duo, Memory Stick PRO Duo, xD-Picture Card, and so on). Contact our customer support for details.

**** Times may vary depending on the memory card being used, the number of files, ambient temperature, and other factors.

Electrical

Input voltage	DC 5.0 V
Rated current	Maximum 2.3 A
Power consumption	6.3 W (Using with the battery) 7.9 W (Using with the AC adapter)

Interface

USB connector	Two USB 2.0 (Mass Storage Class) interface Host: 2.0 Full Speed and High Speed mode (Standard-A) Slave: 2.0 Full Speed and High Speed mode (Mini-B)
A/V Out connector	Quadrupole mini pin jack (Ø 3.5 mm)
Headphones connector	3-pole mini pin jack (Ø 3.5 mm)
CF Card slot	One slot (Type2, 3.3V) for CompactFlash memory card and MicroDrive
SD Card slot	One slot for SD memory card, SD High-Capacity card, MultiMedia Card, and MultiMedia Card Plus

Battery

Type	Lithium-Ion battery
Model	D111A
Size (H × W × L)	22.45 mm × 20.4 mm × 71 mm
Ratings	3.7 V, 2600 mAh (Typ.)
Temperature	Storing: -20 to 40°C*

* Keep the battery in a cool place when storing it for a long period.

AC adapter

Model	A351H
Input	AC 100 - 240 V, 50 - 60 Hz, 0.3 A - 0.1 A
Output	DC 5.0 V, 2.3 A
Power consumption	Maximum 18 W

About Optional Accessories

The following options are available for the viewer.

optional product	product code
Lithium-Ion battery (Model: D111A)	B32B81826*

* The asterisk (*) is a substitute for the last digit, which varies by country.

Important Safety Instructions

Read all of these instructions before using the viewer, and keep this guide handy for later reference. Follow all warnings and instructions marked on the viewer and the accessories.

Warnings, Cautions, and Notes



Warnings

must be followed carefully to avoid bodily injury.



Cautions

must be observed to avoid damage to your equipment.

Notes

contain important information and useful tips on the operation of the viewer.

When using the viewer



Caution:

- ☐ *Do not drop or apply any shock to the viewer. Take care when carrying it, as strong shocks may damage the internal hard disk drive and cause data to be lost.*
- ☐ *Epson is not responsible for backing up or recovering data. We recommend that you make your own backup files.*
- ☐ Follow all warnings and instructions marked on this product.
- ☐ Use only AC adapter model A351H and Lithium-ion battery model D111A with this product.
- ☐ When connecting the viewer to a computer or other device with a cable, ensure the correct orientation of the connectors. Each connector has only one correct orientation. Inserting a connector in the wrong orientation may damage both devices connected by the cable.
- ☐ Do not insert objects into the slots or openings on the viewer.
- ☐ Do not touch the components inside the viewer unless instructed to do so in the user documentation. Never force the viewer's components into place. Although the viewer is designed to be sturdy, rough handling can damage it.
- ☐ Never spill liquid onto the viewer.
- ☐ If the viewer emits unusual noises, odors, or smoke, cancel the current operation and turn it off immediately. Remove the battery and disconnect the AC adapter from the viewer, then unplug the AC adapter from the power outlet and contact our customer support.
- ☐ Do not use your headphones for long periods at high volume as this can cause permanent hearing loss.
Do not use your headphones while operating a vehicle or performing an activity that requires attention to external sound. When wearing your headphones, we strongly recommend setting the volume so that you can hear your normal speaking voice.
- ☐ Do not stand the viewer upright as it may fall over and be damaged.
- ☐ To prevent fire or electric shock, do not cover the viewer with a blanket or other covering that may give off a static electric shock.
- ☐ To prevent fire or electric shock, do not expose the viewer or its accessories to rain or moisture.
- ☐ To prevent fire or explosion, do not use the viewer where flammable or volatile gas is stored.

- ☐ Do not use the viewer outdoors during a thunderstorm.
- ☐ Do not use the viewer after moving it between extreme temperatures, which may cause condensation to form on electronic parts.
- ☐ If you use the viewer in places where the use of electronic devices is limited, such as in airplanes or hospitals, follow all instructions in those places.

When using the battery



Caution:

There is a risk of explosion if the battery is replaced by the incorrect type. Use the specified new batteries only. Dispose of used batteries according to the instructions.

- ☐ If battery acid gets into your eyes or on your skin, immediately rinse the affected area thoroughly with water and seek medical treatment. If a battery is swallowed, seek medical treatment immediately.
- ☐ Use only an Epson Lithium-ion battery for the viewer according to the directions in the user documentation.
- ☐ Use only AC adapter model A351H and the viewer (Model: G961A/G961B) to charge batteries.
- ☐ Do not use the battery that comes with the viewer for other devices.
- ☐ To protect against short-circuiting, do not remove the outside case of the battery.
- ☐ Do not handle the battery with wet hands or use them near water.
- ☐ Do not expose the battery to water or high humidity.
- ☐ Do not drop, puncture, disassemble, mutilate, or short-circuit the battery.
- ☐ Do not place the battery near or into fire or water.
- ☐ Do not use batteries that are leaking or damaged in any way.
- ☐ Do not charge the battery on devices except this product.
- ☐ Do not charge the battery near open flame or in very hot locations.
- ☐ Keep batteries away from heat sources.
- ☐ Do not leave the battery in a vehicle, to prevent the battery from overheating.
- ☐ Do not insert objects into any openings as they may touch dangerous voltage points or short-circuit components.

- ☐ Prevent the battery from coming into contact with metal objects that could short-circuit it, such as coins or keys.
- ☐ Do not insert the battery into power outlets or other power sources such as car cigarette lighter sockets.
- ☐ Do not solder wires or terminals directly to the battery.
- ☐ Do not touch battery terminals.
- ☐ Keep batteries away from open flame if they leak or smell strange.
- ☐ If overheating, discoloration, or distortion occurs, remove the battery from the viewer and do not use it.
- ☐ Charge the battery before using it if it has not been used for a long period.

When storing the batteries

- ☐ When not using the viewer for a long period, remove the batteries from the viewer and store them separately.
- ☐ Do not store batteries where the temperature or humidity is very high.
- ☐ Store batteries out of children's reach.

When disposing of the batteries

Before disposing of batteries, make sure you discharge them completely.



Warning:

- ☐ *Be sure to securely cover the each end of the battery with tape to prevent combustion or explosion when disposing.*
- ☐ *Do not dispose of batteries as ordinary refuse. Instead, dispose of them in a collection or recycle box in accordance with local laws.*
- ☐ *Do not incinerate or dispose of the battery in fire.*

For European users:



Do not dispose of batteries with ordinary refuse. Instead, dispose of them in a recycle box in accordance with local laws.

For users in the United States and Canada:



This mark indicates that the battery will be recycled by RBRC. When you dispose of the battery, contact RBRC.

When using the AC adapter

- ☐ Use only the type of power source indicated on the AC adapter's label, and always supply power directly from a standard, domestic power outlet with a power cord that meets the relevant local safety standards. If you are not sure of the power supply specifications in your area, contact your local power company or contact our customer support.
- ☐ Place the AC adapter near an electrical outlet where the power cord can be easily unplugged.
- ☐ The AC adapter and power cable provided are designed for use with the viewer. Do not attempt to use them with other electronic devices unless specified.
- ☐ Do not remove the AC adapter from the viewer during operations (connecting the AC adapter during operations is possible).
- ☐ The AC adapter included is designed for use with the viewer. Use of any other adapter could result in fire, electrical shock, or injury.
- ☐ Use only AC adapter model A351H with the viewer.
- ☐ Make sure the total amperage of all devices plugged into the power outlet does not exceed the power outlet's ampere rating.
- ☐ Do not connect the AC adapter when the battery is not installed. Otherwise, the viewer may be damaged.
- ☐ If you plan to use this product in Germany, the building installation must be protected by a 16 amp circuit breaker to provide adequate short-circuit protection and over-current protection for this product.

- ☐ Do not use a damaged or frayed AC adapter.
- ☐ If you use an extension cord with the viewer, make sure the total amperage of all devices plugged into the extension cord does not exceed the cord's amperage rating.
- ☐ Never disassemble, modify, or attempt to repair the AC adapter by yourself except as specifically explained in this guide.
- ☐ Do not use power outlets controlled by wall switches or automatic timers.
- ☐ Do not use power outlets on the same circuit as large motors or other appliances that may cause voltage fluctuations.
- ☐ Avoid using outlets on the same circuit as photocopiers or air control systems that regularly switch on and off.
- ☐ To prevent fire or electric shock, do not cover the AC adapter with a blanket or similar covering.
- ☐ Position the viewer's power cable so that it will not be stepped on or run over.
- ☐ Do not place any objects on the power cable and the AC adapter.
- ☐ Keep the power cable straight at the ends and at the points where it enters the transformer.
- ☐ The power cable should be placed so as to avoid abrasions, cuts, fraying, crimping, kinking, and other damage.
- ☐ If the AC plug does not fit your outlet, have a proper outlet installed by a qualified electrician.
- ☐ Remove the AC plug from the outlet during lightning storms.

For US and Canadian users:

Use the included power cord or a 6 to 10 foot UL-approved type SPT-2 or heavier type, 2 × 18 AWG cord with a 125 V 10 A plug and 125 V 7 A connector.

When using a memory card

- ☐ Only memory cards designed for the viewer's specifications can be used.
- ☐ Do not remove a memory card or turn off the viewer while the **Access** lamp is flashing. See "Parts" (page 9) to find where the **Access** lamp is.

When using the LCD

- ☐ The LCD panel on the viewer may contain a few small bright or dark spots. These are normal and do not mean that your LCD panel is damaged in any way.
- ☐ If the LCD panel on the viewer is damaged, consult your dealer.
- ☐ If the liquid crystal solution contained in the LCD panel on the viewer leaks out and gets onto your hands, wash them thoroughly with soap and water. If it gets into your eyes, flush them immediately with water. If discomfort or vision problems remain after a thorough flushing, see a doctor immediately.
- ☐ Only use a soft, dry cloth to clean the display. Do not use liquid or chemical cleaners.

When storing, maintaining, or transporting the viewer

- ☐ Do not store the viewer outdoors.
- ☐ Do not store the viewer near water.
- ☐ Do not store the viewer in a location subject to high temperature or humidity.
- ☐ Do not store the viewer in a location subject to rapid changes in temperature or humidity.
- ☐ Do not store the viewer in a location subject to direct sunlight or strong light sources.
- ☐ Unplug the viewer from the power outlet before cleaning it. Use a damp cloth for cleaning and do not use liquid or aerosol cleaners.
- ☐ Remove the battery from and unplug the viewer and refer servicing to qualified service personnel under the following conditions: The power cable or plug is damaged; liquid has entered the viewer or its accessories; the viewer or its accessories have been dropped or the case is damaged; the viewer or its accessories do not operate normally or exhibit a distinct change in performance.

Safety information for United Kingdom users

The following safety information applies to the AC adapter.



Warning:

Refer to the rating plate for the voltage and check that the appliance voltage corresponds to the supply voltage.

Important:

The wires in the mains lead fitted to this appliance are colored in accordance with the following code:

Blue — Neutral

Brown — Live

As the colours of the wires in the mains lead of this appliance may not correspond with the coloured markings identifying the terminals in your plug, proceed as follows;

The blue wire must be connected to the terminal in the plug marked with the letter N.

The brown wire must be connected to the terminal in the plug marked with the letter L.

If damage occurs to the plug, replace the lead set or consult a qualified electrician.

For United Kingdom, Hong Kong, and Singapore users

Replace fuses only with fuses of the correct size and rating.

Safety requirements

Main plug	Use 3-pin main plug that is registered with the Safety Authority.
Flexible cord	Use a double insulated flexible cord that is certified* to the relevant IEC or BS standards.
Appliance connector	Use an appliance connector certified* to the relevant IEC or BS standards.

* Certified by member of IECEE CB Scheme.

Index

A

Audio equalizer setting, 49

B

Backing up data

from the viewer onto the computer, 25

from the viewer onto USB devices, 27

Battery

charging, 62

installing, 61

removing, 63

C

Changing a folder's name, 40

Cleaning the viewer, 61

Connecting to the computer, 25

Contacting EPSON, 69

Copying data onto the viewer

from memory cards, 21

Copying data to Photos or Videos

from a computer, 29

from Backup Files or Memory Card, 29

from USB devices, 23

Customer support, 69

D

Deleting

audio files, 50

files or folders, 41

Disconnecting from the computer, 26

Displaying photos or videos, 36

F

File format

audio, 46

photo, 30

video, 31

Folder thumbnail, 43

H

Holding the key operations, 13
Home screen, 13

I

Important notice, 8
Information, 34
 photo, 34
 video, 35

K

Key
 while playing music, 48
 while playing videos, 38

M

Main features, 8
Memory card
 inserting, 18, 20
 removing, 19, 20
Music playback, 47

O

Optional accessories, 81

P

Parts, 9
 back, 9
 front, 9
 LCD and control panel, 10
Playlist
 adding tracks, 51
 changing track order, 51
 creating, 50
 deleting/removing tracks, 51
Play mode, 48
Pop up menu
 photo files, 35
 video files, 36
Printer, 55
 available types of paper, 55
 connecting, 57

- settings, 59
- Printing
 - photos, 55
 - videos, 58
- Private folders, 39
- Protecting files or folders, 42

R

- Rate, 43
- Resetting the viewer, 69

S

- Safety instructions, 81
- Safety requirements, 88
- Screen
 - icons, 32
 - switching, 33
- Screen saver, 44
- Setting
 - auto-rotation, 54
 - backlight timer, 53
 - backup completion sound, 54
 - date and time, 54
 - delete after copying, 54
 - DivX registration code, 54
 - hard drive capacity, 53
 - key beep, 54
 - language, 54
 - LCD brightness, 54
 - play settings, 54
 - power off timer, 53
 - screen saver, 53
 - set password, 54
 - sleep timer, 53
 - slide show clock, 54
 - slide show duration, 54
 - slide show effects, 54
 - slide show music, 54
 - unsupported files, 54
 - video out, 54
 - volume, 54
- Slide show, 39
- Software, 14
 - installing, 14

- launching, 26
- Specifications, 79
- Standards and approvals, 76

T

- Technical support, 69
- Transferring audio data, 46
- Troubleshooting, 64
 - error messages/icons, 64
 - operation problems, 67
 - power supply problems, 65
 - printing problems, 68
 - viewing and playback problems, 65
- Turning the power off, 12
- Turning the power on, 11

V

- Video output, 60