

Support Bulletin
Product: SPro 3800 / 4800 / 7800 / 9800 / 4000 / 7600 / 9600 – SPhoto 2100 / R2400
Subject: ICC profiles for Enhanced Matte Poster Board for Epson (Ver 1.0)

EN	At present, this document is only available in English.
DE	Dieses Dokument ist gegenwärtig nur in Englisch verfügbar.
FR	A ce jour, ce document n'est disponible qu'en anglais.
IT	Attualmente questo documento è disponibile solo in lingua inglese.
PO	Atualmente este documento está unicamente disponível em inglês
ES	Atualmente este documento sólo está disponible en inglés.
NL	Dit document is op dit moment alleen in Engels verkrijgbaar.

This bulletin provides information on the ICC profiles for the “Enhanced Matte Poster Board for Epson” media.

1. File Information:

File Name:	ICC Profiles for “Enhanced Matte Poster Board for Epson” media.
Version:	1.0
Supported OS:	Windows 98 / ME / NT / 2000 / XP ; MacOS 8 / 9 / 10.2 or later
Supported Printers:	Stylus Pro 3800 / 4000 / 4800 / 7600 / 7800 // 9600 / 9800 ; Stylus Photo 2100 / R2400

2. Profiles Description:

These ICC profiles are intended to be used to print on “Enhanced Matte Poster Board for Epson” media using EPSON Inkjet printers and their standard printer drivers.

Profile Name	Printer Model	Black Ink Type	EPSON Driver Media Type
Pro3800 Enhanced Matte Poster Board for Epson_MK	Stylus Pro 3800	Matte Black	Enhanced Matte Paper
Pro4000-C4 Enhanced Matte Poster Board for Epson_MK	Stylus Pro 4000-C4	Matte Black	Enhanced Matte Paper
Pro4000-C8 Enhanced Matte Poster Board for Epson_MK	Stylus Pro 4000-C8	Matte Black	Enhanced Matte Paper
Pro4400 Enhanced Matte Poster for Epson_MK	Stylus Pro 4400	Matte Black	Enhanced Matte Paper
Pro4800 Enhanced Matte Poster Board for Epson_MK	Stylus Pro 4800	Matte Black	Enhanced Matte Paper
Pro4800 Enhanced Matte Poster Board for Epson_PK	Stylus Pro 4800	Photo Black	Enhanced Matte Paper
Pro9400 7400 Enhanced Matte Poster Board for Epson_MK	Stylus Pro 7400 / 9400	Matte Black	Enhanced Matte Poster Board
Pro9600 7600 Enhanced Matte Poster Board for Epson_MK	Stylus Pro 7600 / 9600	Matte Black	Enhanced Matte Poster Board
Pro9600 7600 Enhanced Matte Poster Board for Epson_PK	Stylus Pro 7600 / 9600	Photo Black	Enhanced Matte Poster Board
Pro9800 7800 Enhanced Matte Poster Board for Epson_MK	Stylus Pro 7800 / 9800	Matte Black	Enhanced Matte Poster Board
Pro9800 7800 Enhanced Matte Poster Board for Epson_PK	Stylus Pro 7800 / 9800	Photo Black	Enhanced Matte Poster Board
SP2100 Enhanced Matte Poster Board for Epson_MK	Stylus Photo 2100	Matte Black	Archival Matte Paper
SP2100 Enhanced Matte Poster Board for Epson_PK	Stylus Photo 2100	Photo Black	Archival Matte Paper
SPR2400 Enhanced Matte Poster Board for Epson_MK	Stylus Photo R2400	Matte Black	Archival Matte Paper

3. Installing ICC Profiles for “Enhanced Matte Poster Board for Epson”

To install these ICC profiles on your computer, you need to place them into the Operating System’s profiles location. The following table provides the standard location according to the OS:

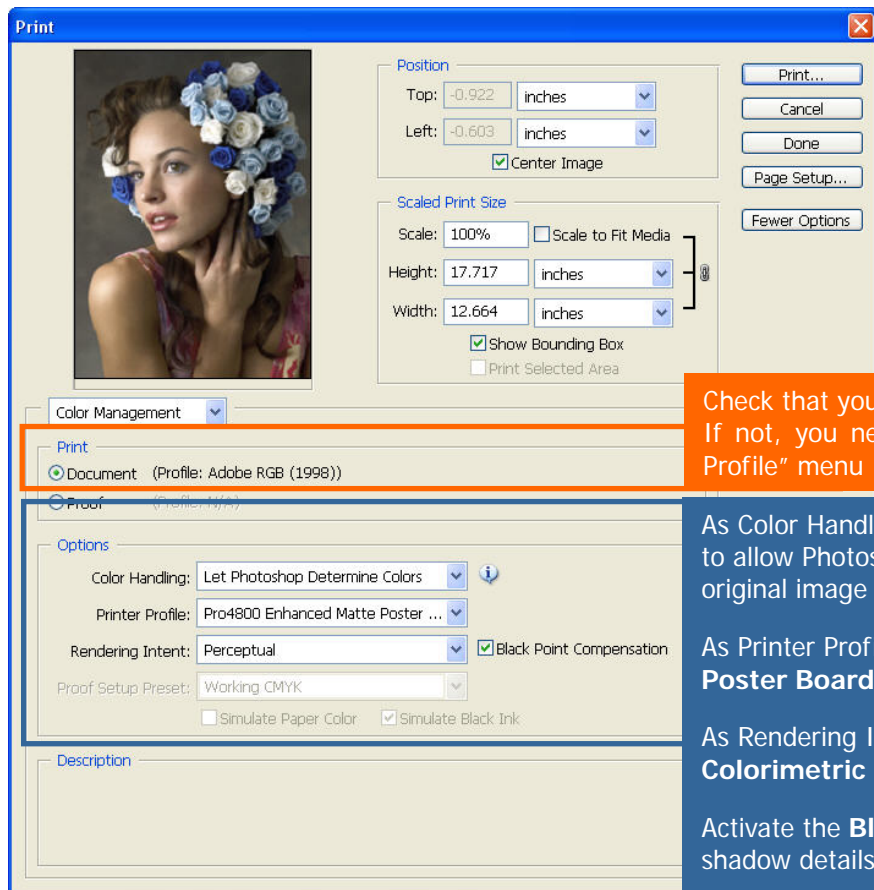
Operating System	Location of ICC Profiles
Windows 98 / ME	Windows / System / Color
Windows NT	Winnt / System32 / Color
Windows 2000	Winnt / System32 / Spool / Drivers / Color
Windows XP	Windows / System32 / Spool / Drivers / Color
MAC OS 8 / 9	System Folder / ColorSync Profiles
MAC OS 10.2 or later	Library / ColorSync / Profiles

4. How to print using ICC Profiles from Adobe Photoshop

As example, this chapter shows the required Epson driver settings when you are printing from Adobe Photoshop CS2.

NB: This setting may slightly differ according to the version of Photoshop and to the Epson printer model.

- 4.1 Start Photoshop and Open the image that you want to print using ICC profiles.
- 4.2 Open the “File → Print with Preview” window of Photoshop and select the Color Management menu.
- 4.3 Check that your image has a assigned “input” profile
- 4.4 Define the Options needed to print using ICC profiles from Photoshop.



Check that your document has an assigned “input” profile. If not, you need to select a profile from the “Edit → Assign Profile” menu

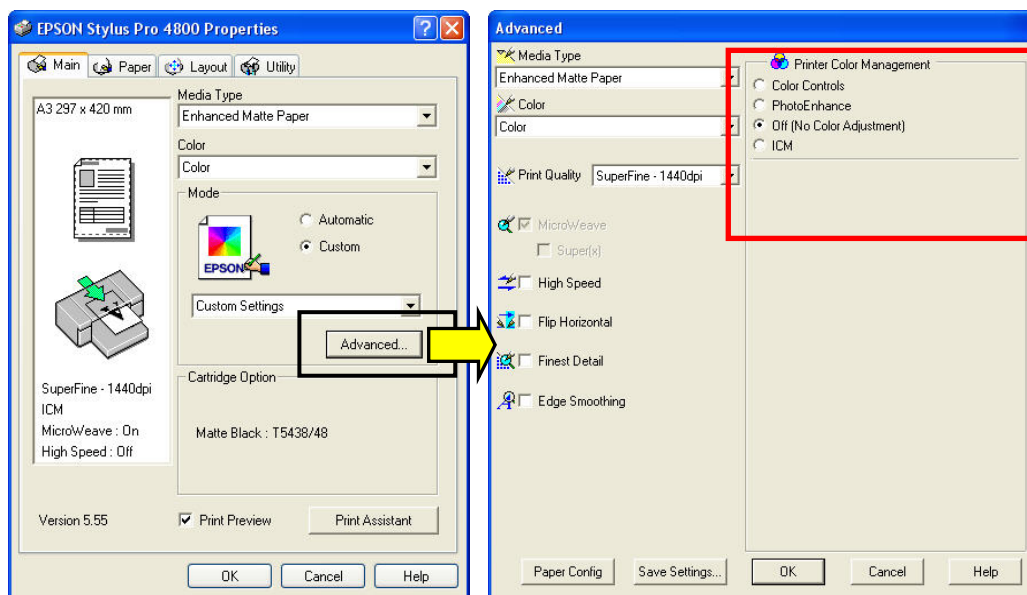
As Color Handling, select **Let Photoshop Determine Colors** to allow Photoshop to perform all the color conversion from the original image to the printed result.

As Printer Profile, select from the list the **Enhanced Matte Poster Board for Epson** profile of your printer model.

As Rendering Intent, select **Perceptual** or **Relative Colorimetric** according to your image type and color gamut

Activate the **Black Point Compensation** to ensure that shadow details will be preserved.

- 4.5 Click on the Page Setup button to open the Epson printer driver’s properties and open the Advanced menu.
- 4.6 From the Advanced menu, select the correct Media Type, as well as the desired print quality settings and disable the Printer Color Management by setting it to Off (No Color Adjustment).



When you print using the Color Handling **Let Photoshop Determine Colors**, it’s very important to disable the printer color management by setting it to **Off (No Color Adjustment)**, otherwise you will apply a double color conversion process (one by Photoshop + one by the printer driver) that will generate inaccurate color results.

- 4.7 Finally, press the Ok button to exit the printer driver and on the Print button of Photoshop to print your document using your correct ICC workflow.

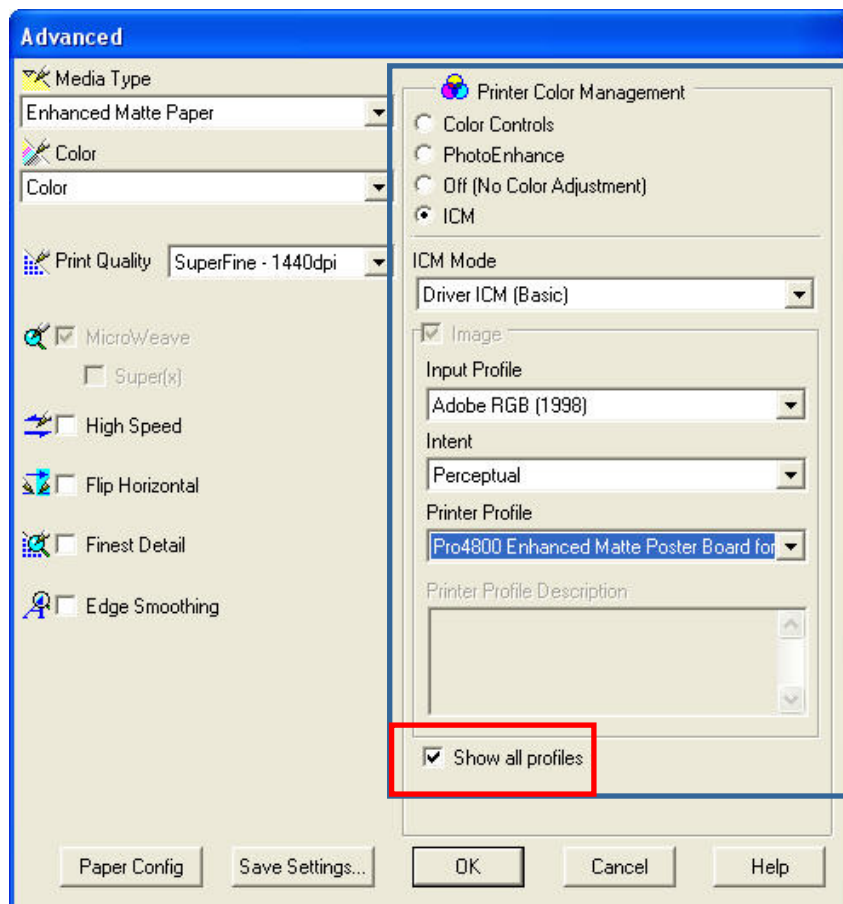
5. How to print using ICC Profiles directly from the Epson printer driver

If your application is not managing ICC workflow, you can print using ICC profiles directly from the Epson driver.

NB: It's not possible to use custom profiles with all the Epson printer models, so please refer to your user's guide to check if your printer and especially your printer driver allows this feature.

5.1 From your application, select the Print menu to open the Epson printer driver's properties and open the Advanced menu.

5.2 From the Advanced menu, select the correct Media Type, as well as the desired print quality settings and choose ICM as Printer Color Management setting.



Select the **ICM** as Printer Color Management mode.

The first thing to do is to enable the **Show all profiles** option that will allow you to see and select all the ICC profiles installed on your computer.

As ICM Mode, select the **Basic** mode.

As Input Profile, select your document profile or define a profile by choosing it from the list. **Adobe RGB (1998)** or **sRGB** profiles are both suited for color images printing.

As Intent, choose **Perceptual** or **Relative Colorimetric** according to your document type and color gamut

As Printer Profile, select from the list the **Enhanced Matte Poster Board for Epson** profile of your printer model.

5.3 Finally, press the Ok button to exit the printer driver and on the Print button of your application to print your document using your Epson driver's ICC workflow.