

EPSON
EXCEED YOUR VISION

EPSON STYLUS™ **PRO** Series

Mac OS X Leopard Printer Driver Guide

NPD3699-00

Copyrights and Trademarks

No part of this publication may be reproduced, stored in a retrieval system, or transmitted in any form or by any means, electronic, mechanical, photocopying, recording, or otherwise, without the prior written permission of Seiko Epson Corporation. The information contained herein is designed only for use with this Epson printer. Epson is not responsible for any use of this information as applied to other printers.

Neither Seiko Epson Corporation nor its affiliates shall be liable to the purchaser of this product or third parties for damages, losses, costs, or expenses incurred by the purchaser or third parties as a result of accident, misuse, or abuse of this product or unauthorized modifications, repairs, or alterations to this product, or (excluding the U.S.) failure to strictly comply with Seiko Epson Corporation's operating and maintenance instructions.

Seiko Epson Corporation shall not be liable for any damages or problems arising from the use of any options or any consumable products other than those designated as Original Epson Products or Epson Approved Products by Seiko Epson Corporation.

Seiko Epson Corporation shall not be held liable for any damage resulting from electromagnetic interference that occurs from the use of any interface cables other than those designated as Epson Approved Products by Seiko Epson Corporation.

EPSON[®] is a registered trademark, and EPSON STYLUS[™] and Exceed Your Vision are trademarks of Seiko Epson Corporation.

Microsoft[®] and Windows[®] are registered trademarks of Microsoft Corporation.

Apple[®] and Macintosh[®] are registered trademarks of Apple Inc.

Adobe[®], Photoshop[®], Elements[®], Lightroom[®] and Adobe[®] RGB are registered trademarks of Adobe Systems Incorporated.

General Notice: Other product names used herein are for identification purposes only and may be trademarks of their respective owners. Epson disclaims any and all rights in those marks.

Copyright© 2008 Seiko Epson Corporation. All rights reserved.

Contents

Copyrights and Trademarks

Using the Printer Software

Printer Software Introduction	4
Adding the printer	4
Printer driver	5
EPSON Printer Utility3	5
EPSON StatusMonitor	6
Accessing the Printer Driver	6
Accessing the Page Setup dialog	6
Accessing the Print dialog	7
Getting Information Through Online Help	7
Basic Settings	8
Setting the printer driver	8
Checking the printer status	8
Canceling printing	9
When problem occurs during printing	9
Using Printer Utilities	10
Accessing EPSON Printer Utility3	11
Using EPSON StatusMonitor	11
Uninstalling the Printer Software	12
Uninstalling the printer driver	12
Uninstalling EPSON LFP Remote Panel	13

Variety of Printings

Using Color Management	14
Color management	14
Color adjustment by the printer driver	18
Black-and-White Photo Printing	19
Borderless Printing	21
Supported media type	21
Application settings	21
Printer driver settings	22
Roll paper cut for borderless printing	23
Enlarge or Reduce Size Printing	24
Custom	24
Pages Per Sheet Printing	25
Printing on Custom Paper	25
Banner Printing on Roll Paper	27
Application settings	27
Printer driver settings	27

Using the Printer Software

Printer Software Introduction

Note:

The screen may differ depending on the printer you use.

Adding the printer

After you have installed the printer software on your computer, you need to select your printer. You must select a printer the first time you use it or whenever you want to switch to another printer. Your computer will always print using the last printer selected.

Note:

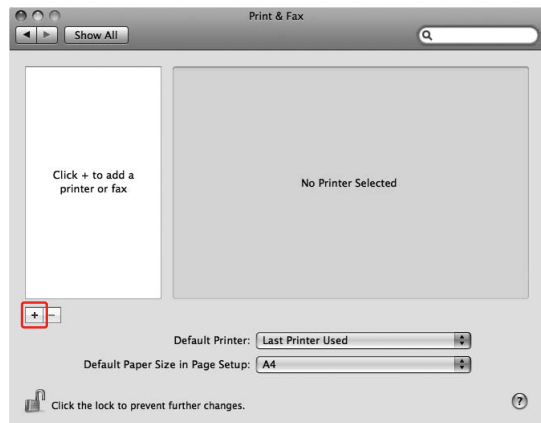
When you use the printer via a network, assign an IP address to the printer using the printer's control panel or EpsonNet Config, before adding the printer.

1 Turn on the printer.

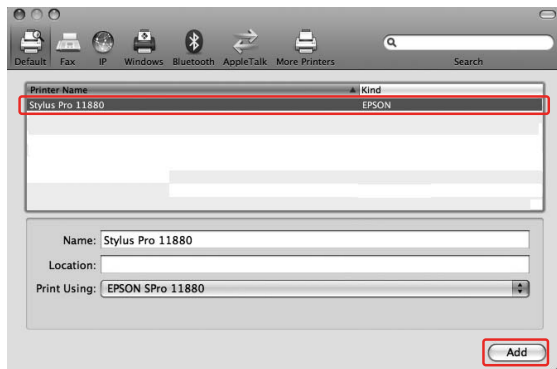
2 Double-click the **Applications** folder, and then double-click the **System Preferences** folder. Then double-click the **Print & Fax** folder.



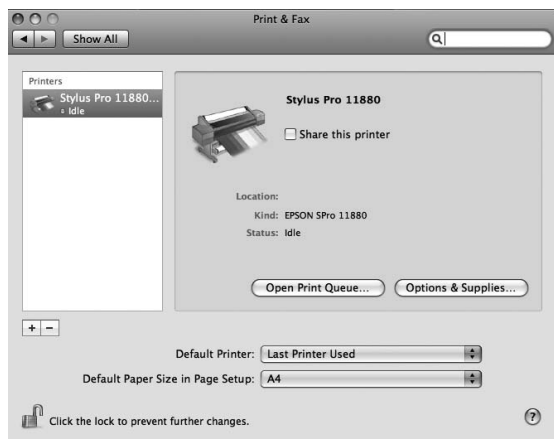
3 Click **+**.



4 Select your printer, and then click **Add**.



5 Make sure the printer you just added is listed. Then, close the Print & Fax dialog.

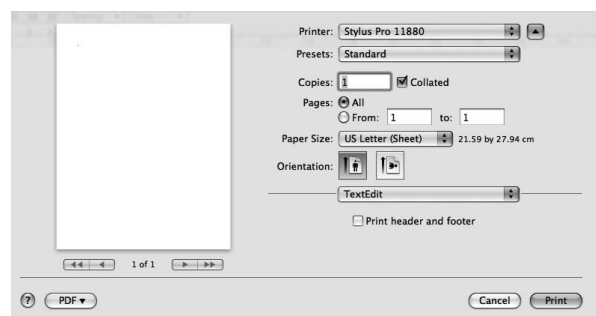


Printer driver

The printer driver lets you print documents from applications to the printer.

The following are main functions of the printer driver:

- Sends the print data to the printer.
- Makes the printer settings, such as the media type, paper size. You can register these settings, and you can also easily import or export these registered settings.



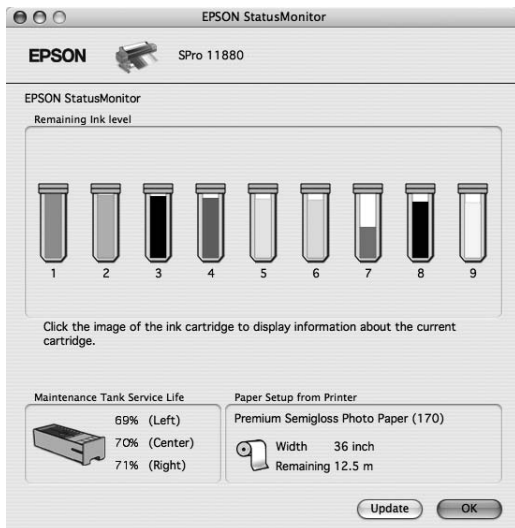
EPSON Printer Utility3

You can execute the printer maintenance functions, such as Nozzle Check, Head Cleaning. EPSON Printer Utility3 is installed with the printer driver automatically.



EPSON StatusMonitor

This utility provides you with printer status information, such as the ink cartridge status, the free space of the maintenance tank, and a printer error.



Accessing the Printer Driver

To access the printer driver, follow the steps below. The following procedures may differ depending on the application you use.

❑ Page Setup dialog

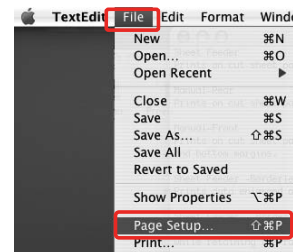
You can make the paper settings, such as media type, paper size.

❑ Print dialog

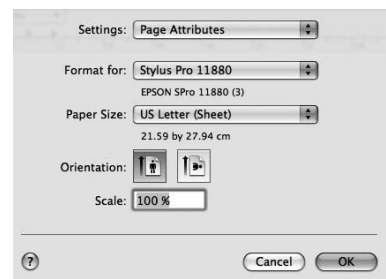
You can make the settings related to print quality.

Accessing the Page Setup dialog

To access the Page Setup dialog, click **Page Setup** on the File menu of your application.



The Page Setup dialog is displayed. You can select a paper size, borderless printing, a paper source, and a print area in the Paper Size setting.

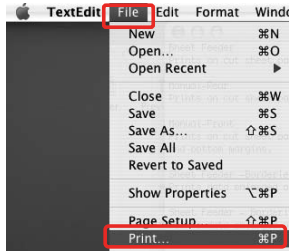


Note:

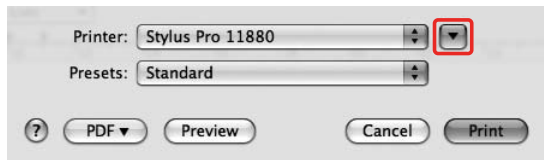
Depending on your application, the Page Setup menu may not appear on the File menu. If so, click **Print** on the File menu of your application, select the appropriate settings.

Accessing the Print dialog

To access the Print dialog, click **Print** on the File menu of your application.




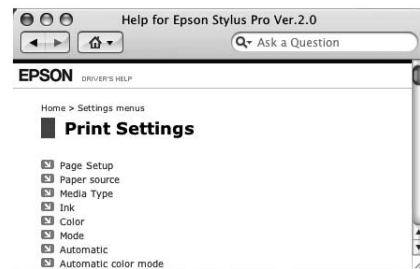
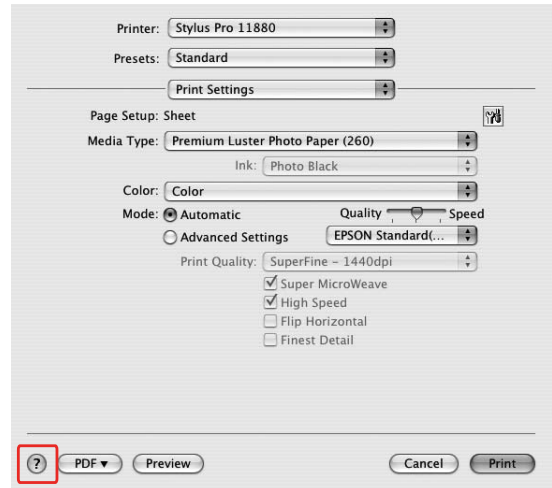
The Print dialog is displayed. Click the  button.



Make the settings as necessary, and then start printing.

Getting Information Through Online Help

To access the online help, click the  button in the dialog of the printer driver.



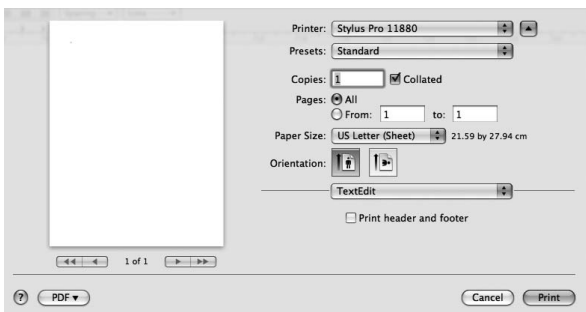
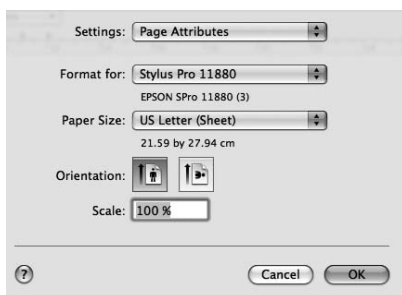
Basic Settings

This section describes how to print your data from an application using the Epson printer driver.

Setting the printer driver

First, make the print data using the application software.

Before printing, open the printer driver window, and confirm the print settings such as the media type, paper size.

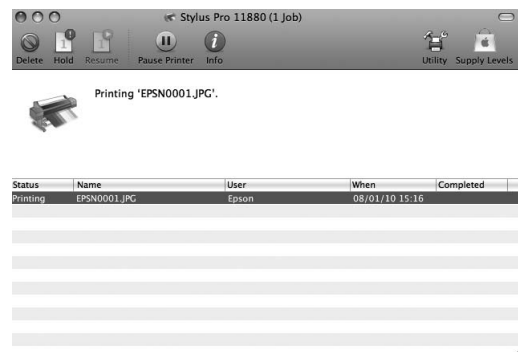


Checking the printer status

- 1 Click the Printer icon in the Dock.

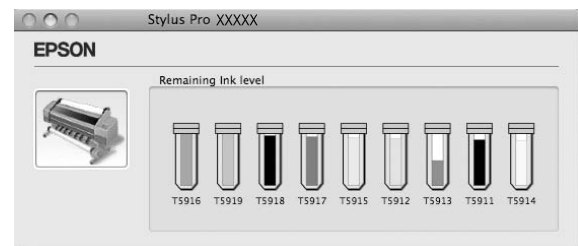


- 2 You can check the jobs waiting and their information, and also cancel the printing.



EPSON Printer Monitor

The EPSON Printer Monitor appears on your display when you start printing, depending on the printer type.



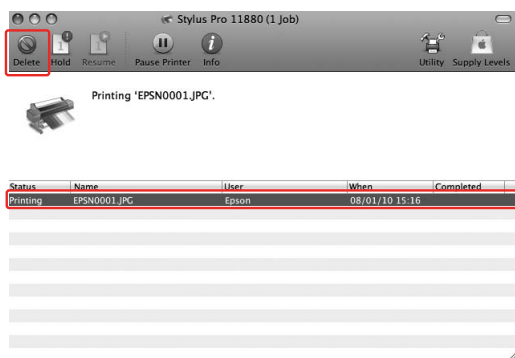
Canceling printing

You can cancel a print job waiting from the computer.

- 1 Click the Printer icon in the Dock.



- 2 Click the job you want to delete, and then click **Delete**.

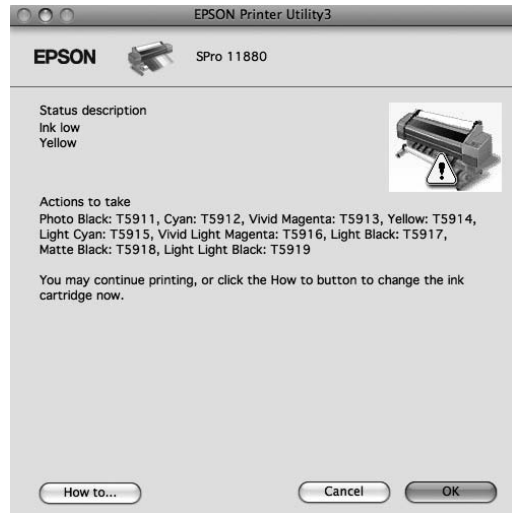


Note:

- You can delete a job waiting with the same procedures above.
- You cannot cancel a print job that has been sent to the printer. In this case, cancel the print job by the printer.

When problem occurs during printing

If a problem occurs during printing, an error message appears. If you are not sure how to solve the problem, cancel printing, and then start EPSON StatusMonitor that leads you step by step through a procedure to solve a problem.

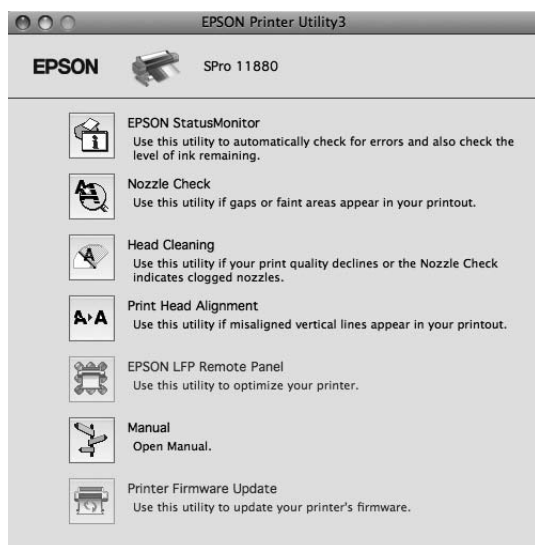


Using Printer Utilities

Note:

The buttons appearing on the printer utilities dialog may differ depending on the printer you use.

The Epson printer utilities let you check the current printer status and perform printer maintenance from your screen.



EPSON StatusMonitor

This utility provides you with printer status information, such as the ink cartridge status, the free space of the maintenance tank, and a printer error.

Nozzle Check

This utility checks the print head nozzles to see if they are clogged and need to be cleaned. Check the nozzles when you notice the print quality has declined and after cleaning to confirm that the print head nozzles have been cleaned. If the print head nozzles are clogged, perform head cleaning.

Head Cleaning

This utility cleans the color and black print heads. You may need to clean the print head if you notice the print quality has declined.

Printer Head Alignment

This utility can be used to improve the print quality of your printed data. The alignment of the print head may need to be adjusted if vertical lines appear out of alignment or if white or black banding noise appear in your printed data. Use this utility to realign the print head.

EPSON LFP Remote Panel

This utility lets you optimize your printer. You can start this utility only if it is installed. See the EPSON LFP Remote Panel online help for detailed information.

Manual/Print Assist


You can access the *User's Guide*. If the *User's Guide* is not installed, it will access a technical support Web site.

Print Firmware Update

EPSON LFP Remote Panel is started and updates the printer firmware. To use this function, you need to download the latest firmware from the Epson Web site beforehand.

Accessing EPSON Printer Utility3

You can access the EPSON Printer Utility3 using the following ways.

- ❑ Double-click the **Applications** folder, and then double-click the **EPSON Printer Utility3** icon.
- ❑ In the Print dialog, select **Print Settings**, and then click the  icon.

Note:

There is no the  icon in the Print dialog, depending on the printer you use.

Using EPSON StatusMonitor

EPSON StatusMonitor provides you with detailed printer status information, a graphic display of the ink cartridge status and the free space of the maintenance tank, and status messages.

Note:

The printer error message appears automatically on your screen even if EPSON StatusMonitor is not opened.

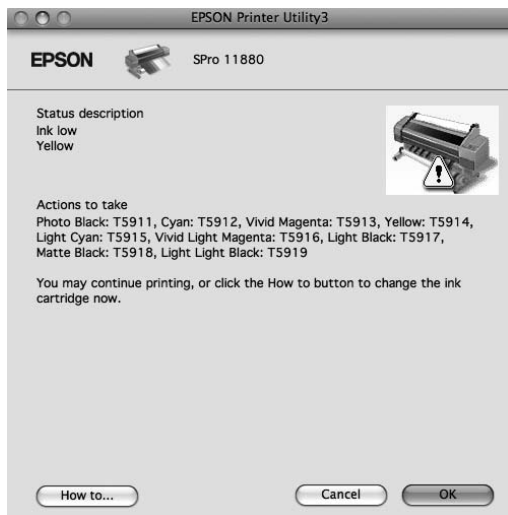
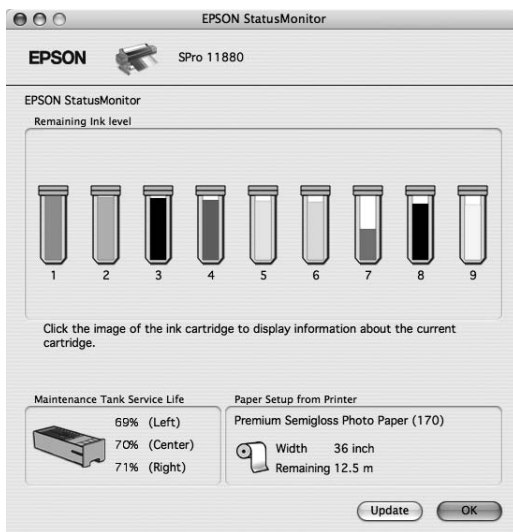
Accessing EPSON StatusMonitor

Open the EPSON Printer Utility3 window, and then click **EPSON StatusMonitor**.



Viewing information in EPSON StatusMonitor

EPSON StatusMonitor provides you with detailed printer status information, a graphic display of the ink cartridge status and the free space of the maintenance tank, and status messages. If a problem occurs during printing, an error message appears. Check the message and solve the problem accordingly.



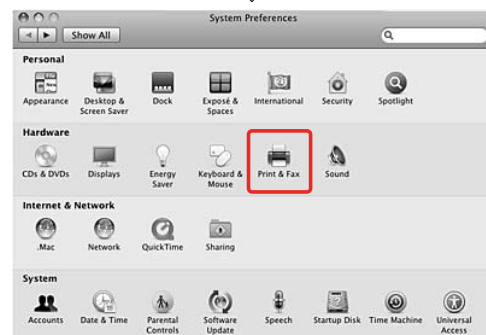
Uninstalling the Printer Software

To uninstall the printer software, follow the steps below.

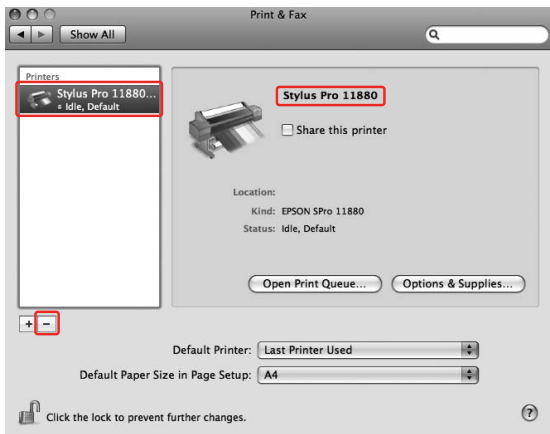
Uninstalling the printer driver

To uninstall the printer driver and EPSON Printer Utility3, follow the steps below.

- 1 Turn off the printer, and unplug the interface cable connected with the computer and printer.
- 2 Close the all application software.
- 3 Double-click the **Applications** folder, and then double-click the **System Preferences** folder. Then double-click the **Print & Fax** folder.



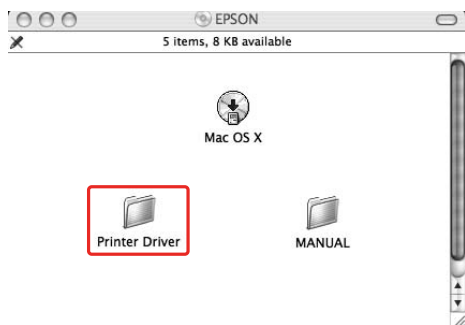
4 Select the printer, and then click -.



After clicking -, close the dialog.

5 Insert the printer software CD-ROM into the CD-ROM drive.

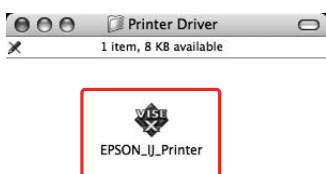
6 Double-click the **Printer Driver** folder.



Note:
If the folder does not appear, double-click the EPSON icon on the desk top.



7 Double-click the EPSON_IJ_Printer icon.



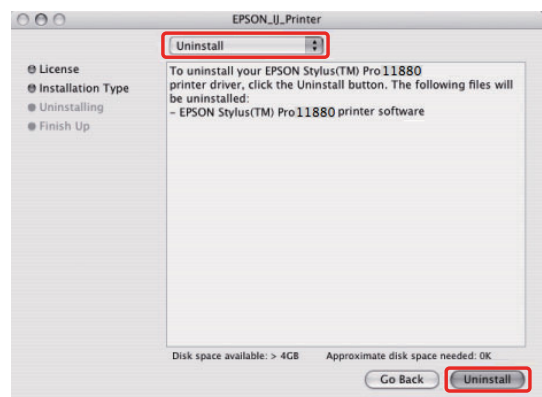
8 If the Authenticate dialog appears, enter the password or phrase and then click OK.

To uninstall the printer driver, you must log in as a user with administrator rights.



9 Click **Continue**, and then click **Accept**.

10 Select **Uninstall** from the pull-down menu, and then click the **Uninstall** button.



11 Follow the on-screen instructions to uninstall the printer driver.

Uninstalling EPSON LFP Remote Panel

Drag the **EPSON LFP Remote Panel** folder to the Trash. See the EPSON LFP Remote Panel online help for more information.

Variety of Printings

Using Color Management

The printer driver provides a setting for performing color management to printing data and a color adjustment that produces better looking prints by using only the printer driver. Color adjustment is performed without adjusting the color of the original data.

→ See “Methods for color management” on page 15.

Color management

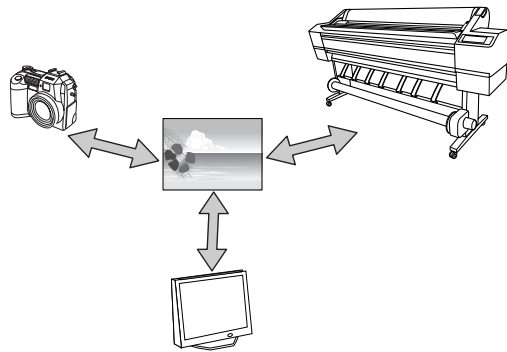
About color management system (CMS)

Since devices such as a digital camera, scanner, monitor, or printer produce color differently, the printing result looks different from the image you see on the display. To adjust the color between devices, use the color management system. Both Windows and Mac OS X have a color management system as their standard feature. Also, some image editing software support the color management system.

Each operating system supports the color management system, such as ICM for Windows and ColorSync for Mac OS. When performing color management using the printer driver, the color management system of the operating system is also used. In this color management system, a color definition file called the ICC profile is used for performing color matching between devices. The ICC profile is prepared for each printer model and each media type. For a digital camera, the color domain of sRGB, AdobeRGB, etc., may be specified as the profile. In color management, the profile of an input device is called an input profile (or source profile), and an output device, such as a printer, is called a printer profile (or output profile).


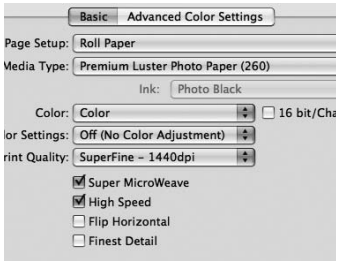
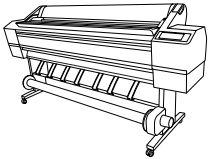
Note:

When you print an image taken by a digital camera or scanner, usually the printing result looks different from what you see on the display. This variance occurs because each device such as a digital camera, scanner, monitor, or printer, produces colors differently. In order to reduce the differences in color between each device, please perform color management between each device.


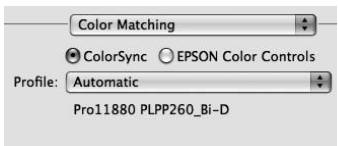
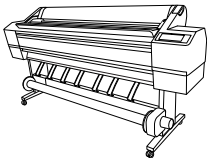


Methods for color management

Color management by application

	Application		Printer driver		Printer
Color management by application	 <p>Specify the input profile. Specify the printer profile.</p>	➔		➔	
<p>The color management is performed by specifying the input profile and the printer profile by the application. You can select this method when an application supports its own color management function. Color compensation should be turned off (no color adjustment) in the printer driver. ➔ See "Color management by application" on page 16.</p>					

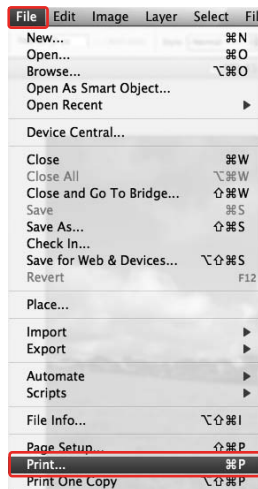
Color management by printer driver

	Application		Printer driver		Printer
Color management by ColorSync	 <p>Specify the input profile.</p>	➔	 <p>Specify the printer profile.</p>	➔	
<p>You need to perform color matching with the printer driver before printing. An application needs to support ColorSync color management. ➔ See "Color management by ColorSync" on page 17.</p>					

Color management by application

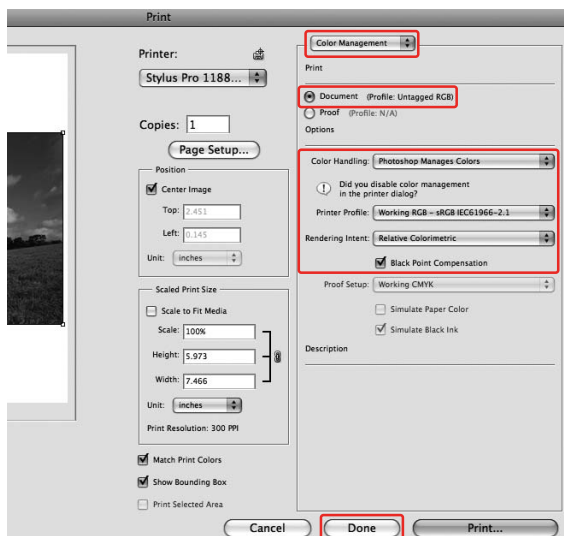
The following procedures are for Adobe Photoshop CS3. Refer to the application's user manual for details of the settings.

1 From the File menu, select **Print**.



2 Select **Color management**, and then select **Document** for the Print. Select **Photoshop Manages Colors** for the Color Handling. Next, select the Print Profile and the Rendering Intent, then click **Done**.

In Adobe Photoshop CS2, select **Color Management**, and select **Document** for the Print. Select **Let Photoshop Determine Colors** for the Color Handling. Select the Printer Profile and the Rendering Intent. Then click **Done**.

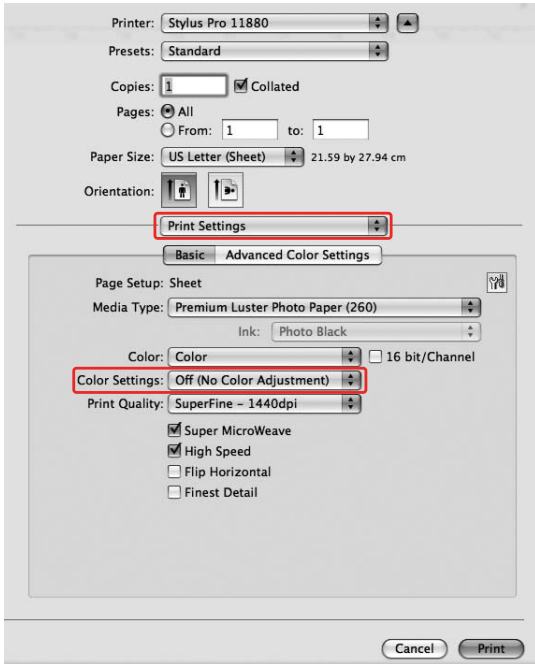


Intent	Explanation
Saturation	Performs conversion, keeping the current saturation unchanged.
Perceptual	Performs conversion so that a more visually natural image is produced. This feature is used when a wider gamut of color is used for image data.
Relative Colorimetric	Performs conversion so that a set of color gamut coordinates and white point (or color temperature) coordinates in original data match their corresponding print coordinates. This feature is used for many types of color matching.
Absolute Colorimetric	Assigns absolute color gamut coordinates to both of original and print data and performs conversion. Therefore, color tone adjustment is not performed on any white point (or color temperature) for the original or print data. This feature is used for special purposes such as logo color printing.

3 Open the Print dialog.

➔ See "Accessing the Printer Driver" on page 6.

- 4** Select **Print Settings** and select **Off (No Color Adjustment)** for the Color Settings in the dialog.



- 5** Check other settings, and then start printing.

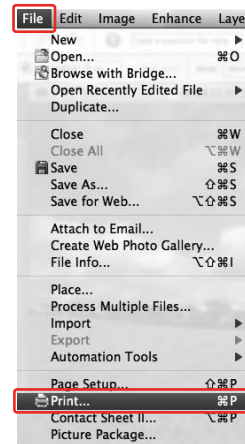
Color management by ColorSync

The following procedures are for Adobe Photoshop Elements 4.0.

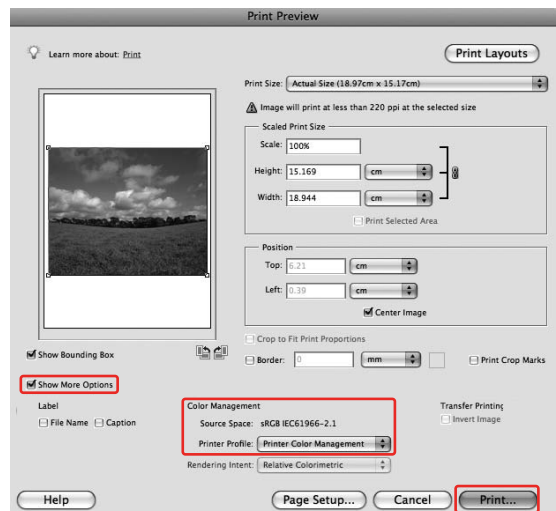
Note:

- Use image data in which an input profile has been embedded.
- The application needs to support ColorSync.
- If you use the specific Adobe applications (Adobe Photoshop CS2/CS3 and Adobe Photoshop Lightroom), you cannot use the following procedures. Use other color management methods.

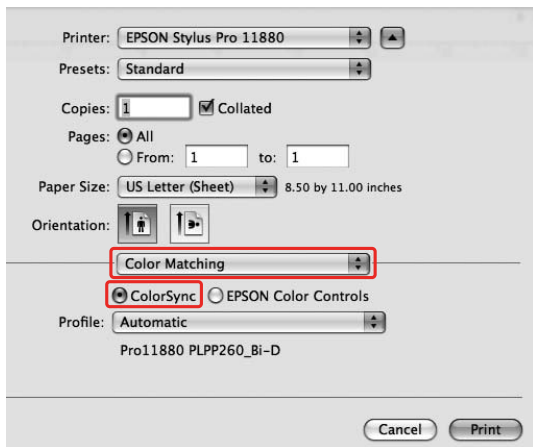
- 1** From the File menu, select **Print**.



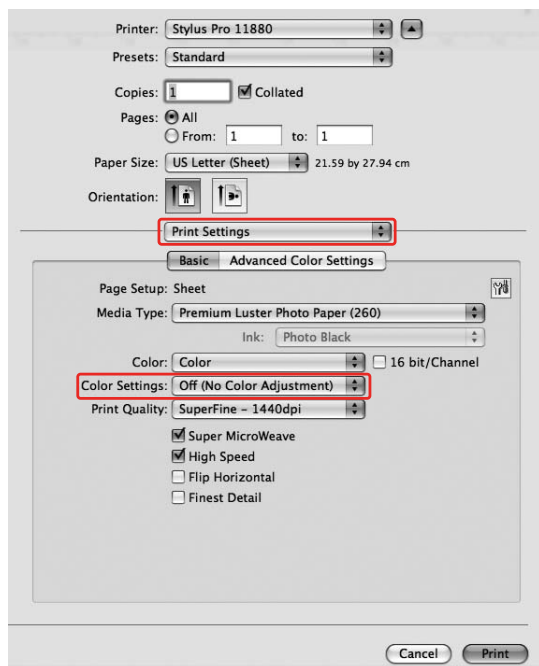
- 2** Select the **Show More Options** check box to display **Color Management**. Select **Printer Color Management** for the Printer Profile. Then click **Print**.



- 3 Select **Color Matching** and select **ColorSync** in the dialog.



- 4 Select **Print Settings** and select **Off (No Color Adjustment)** for the Color Settings in the dialog.



Note:
When you select **Color Controls** in the **Print Settings** dialog, you cannot perform color management.

- 5 Check other settings, and then start printing.

Color adjustment by the printer driver

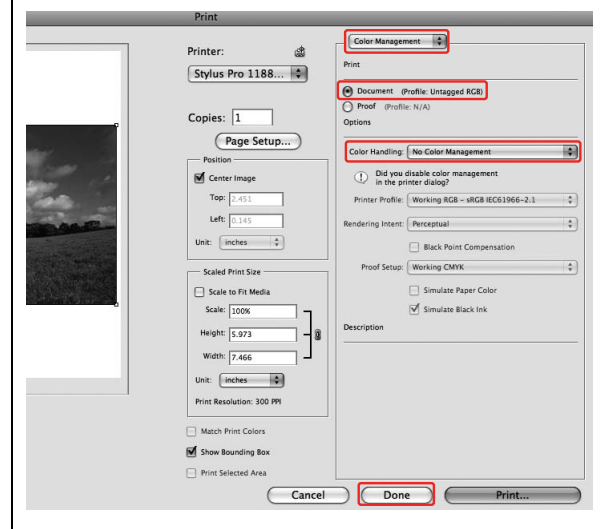
You can perform color management by the printer driver only. Also, you can use the Photo Enhance function to adjust the color of the image data automatically.

Color adjustment by the Color Controls

You can perform color management by the printer driver. Use this function if the application does not support color management or if you want to manually perform color management.

Note:

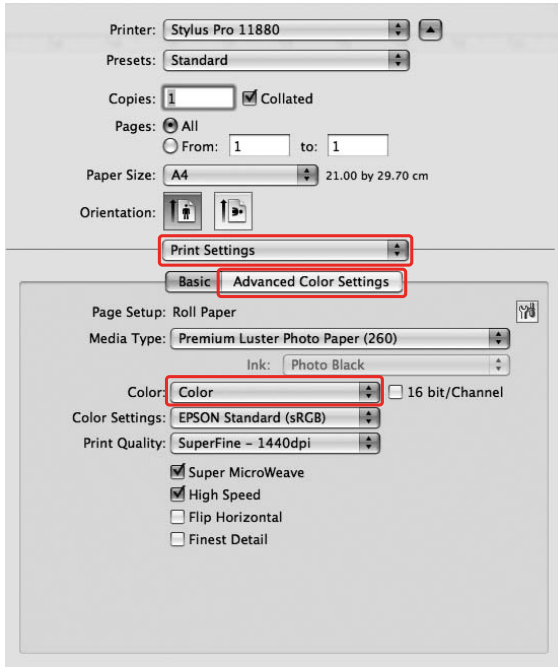
If you use the color management of the printer driver from an application such as Adobe Photoshop CS3, turn off the color management function of the application.



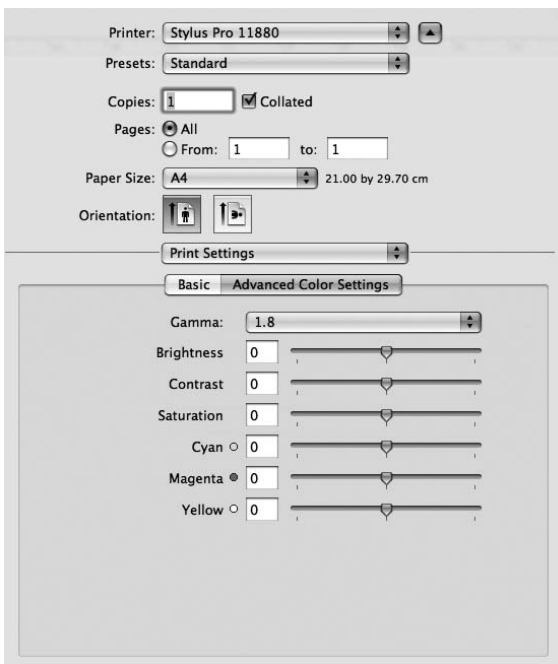
- 1 Open the Print dialog.

➔ See "Accessing the Printer Driver" on page 6.

- 2 Select **Print Settings**, and select **Color** for the Color, and change Color Settings if necessary, then click **Advanced Color Settings**.



- 3 Make the necessary settings.
See the online help of the printer driver for detailed information.



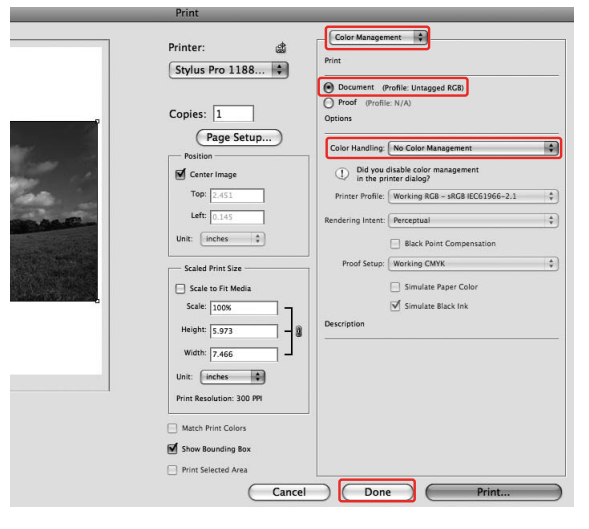
- 4 Check other settings, and then start printing.

Black-and-White Photo Printing

Note:
This function can be used for the printers that support Epson UltraChrome K3 ink.

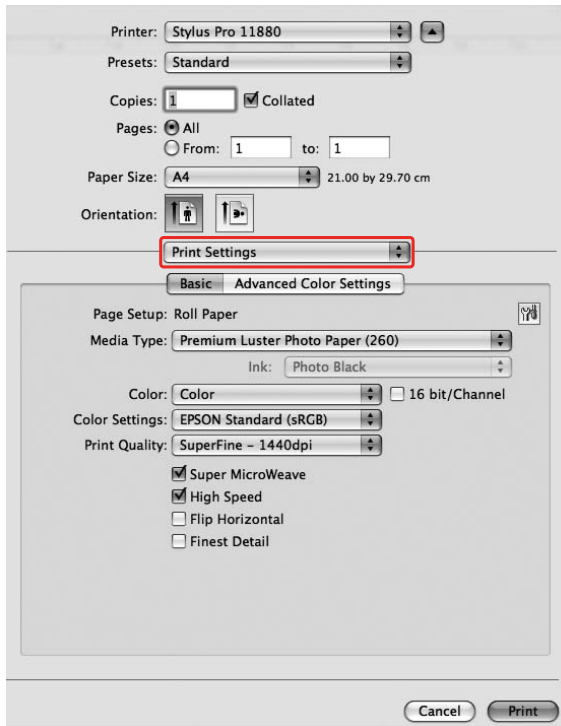
Advanced black-and-white photo printing is available by making the settings in the Color Controls dialog box, without using the application software. The print image is adjusted without affecting the original data.

Note:
If you use the color management of the printer driver from an application such as Adobe Photoshop CS3, turn off the color management function of the application.

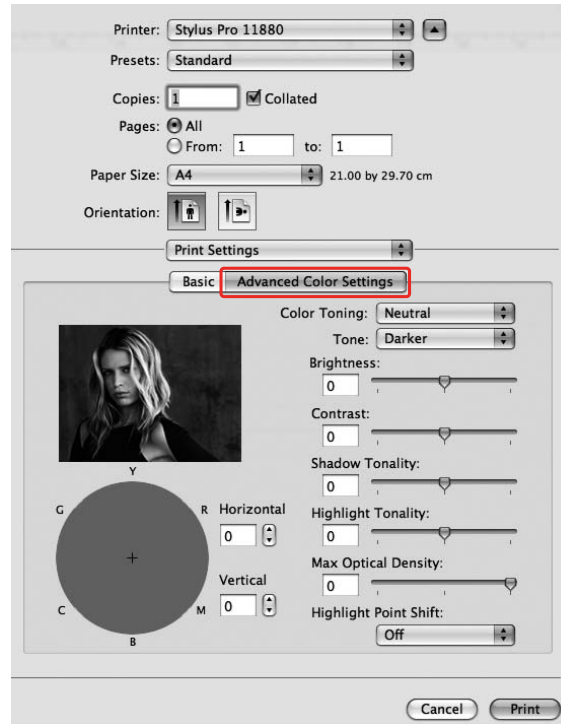


- 1 Open the Print dialog.
→ See "Accessing the Printer Driver" on page 6.

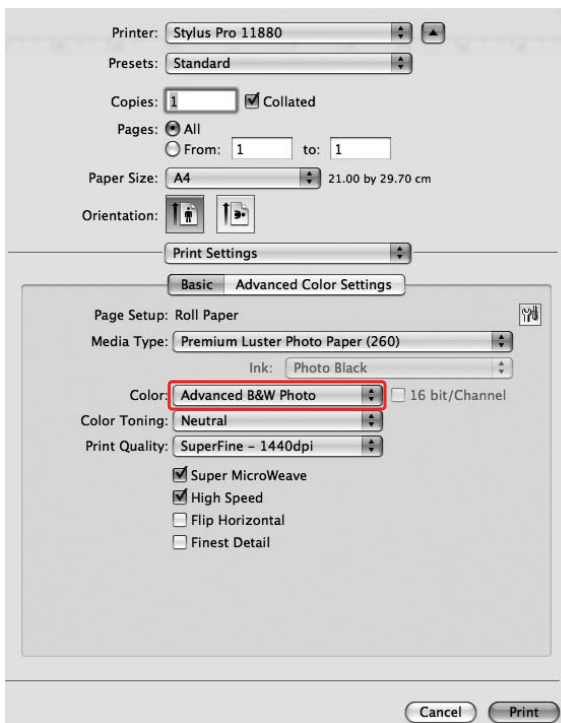
2 Select **Print Settings**.



4 Click **Advanced Color Settings**.



3 Select **Advanced B&W Photo** for the Color.



5 Make the necessary settings, and then start printing.

For more detailed information, see the online help of the printer driver.

Borderless Printing

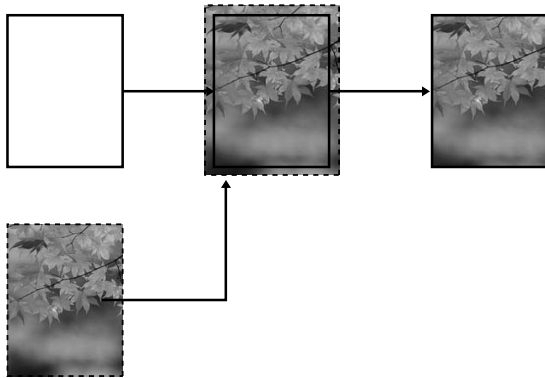
You can print your data without margins on paper. There are two types of borderless printing.

Note:

If you are using roll paper, all four sides can be borderless, and if you are using a sheet of paper, only left and right sides can be borderless.

Auto Expand

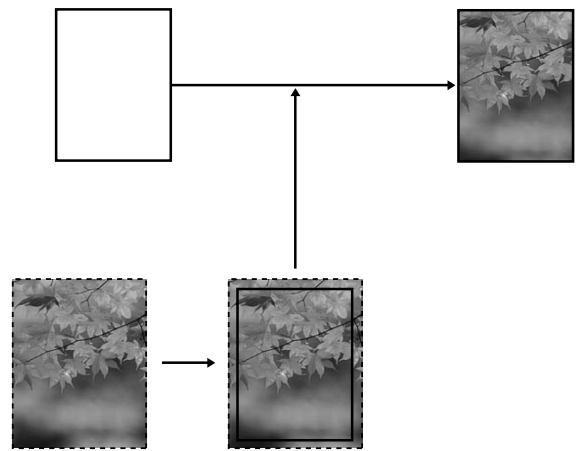
Enlarge the size of print data automatically and print without margins. Enlarged areas that exceed the paper size will not be printed on the paper.



Retain Size

Using an application, enlarge your image data to exceed the paper width and height, to avoid unprinted areas appearing along the left and right edges. The printer driver does not enlarge the image data. Enlarge 3 mm in both the left and right directions (total of 6 mm) is recommended by using the application that created the data.

Select this setting if you do not want to change the ratio of your print data by the printer driver.



Supported media type

See the same section in *User's Guide* for the details.

Application settings

Set the size of the image data using the Page Setting dialog box of the application software.

For Auto Expand

- Set the same paper size as used for printing.
- If your application has margin settings, set the margin to 0 mm.
- Make the image data as large as the paper size.

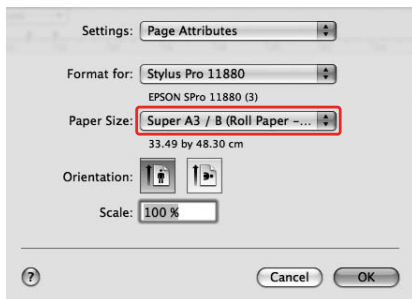
For Retain Size

- ❑ Enlarge 3 mm in both the left and right directions (total of 6 mm), using the application that created the data.
- ❑ If your application has margin settings, set the margin to 0 mm.
- ❑ Make the image data as large as the paper size.

Printer driver settings

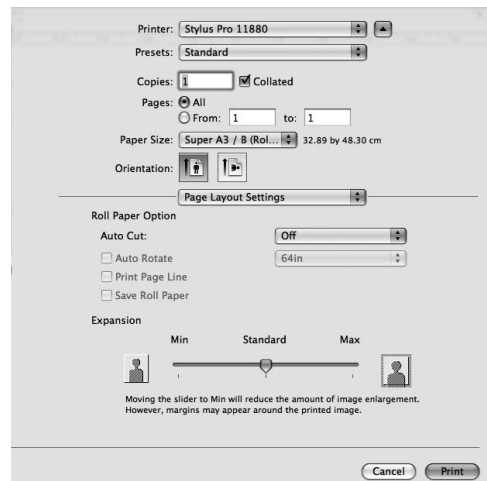
To print your data with this feature, follow the steps below.

- 1 Open the Page Setup dialog.
→ See “Accessing the Printer Driver” on page 6.
- 2 Select the paper size and borderless printing such as **Auto Expand** or **Retain Size**, and then click **OK**.



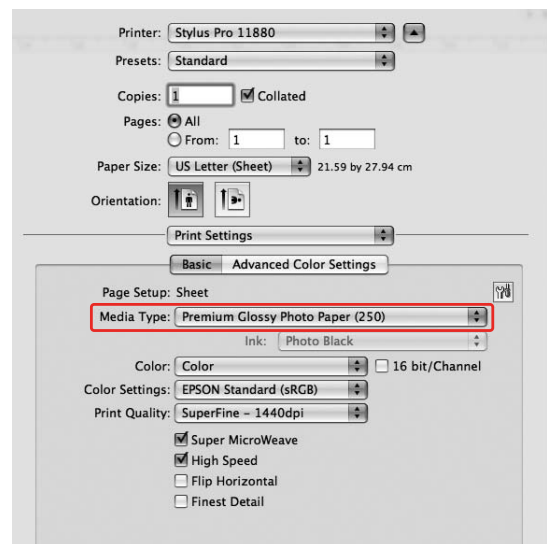
- 3 Open the Print dialog.
→ See “Accessing the Printer Driver” on page 6.

- 4 If **Auto Expand** is selected, set the amount of the enlargement in the Page Layout Settings dialog.



Note:
Moving the slider towards Min decreases the amount of the image enlargement; however, as this amount decreases, margins may appear on one or more sides of the paper.

- 5 In the Print Settings dialog, select the media type.



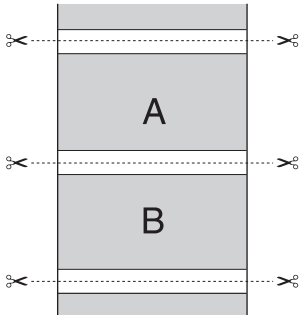
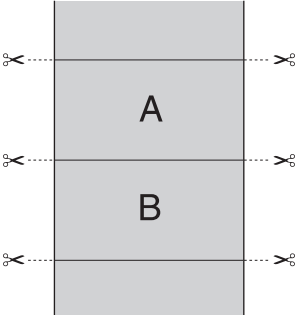
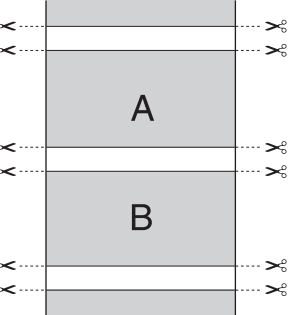
- 6 If you print on roll paper, select the Auto Cut setting in the Page Layout Settings.

→ See “Roll paper cut for borderless printing” on page 23.

- 7 Check the other settings, and then start printing.

Roll paper cut for borderless printing

When you use roll paper for borderless printing, the paper cut operation is different according to the Borderless and Auto Cut settings of the printer driver.

	No margins for left and right	No margins for all directions (single cut)	No margins for all directions (double cut)
Printer driver setting	Borderless: Enable Auto Cut: Normal Cut	Borderless: Enable Auto Cut: Single Cut	Borderless: Enable Auto Cut: Double Cut
Printer operations			
Explanation	Normal Cut is default setting.	<ul style="list-style-type: none"> <input type="checkbox"/> The top area may smear because the top area of the roll paper is cut while the print operation is stopped. <input type="checkbox"/> If the cut position is slightly shifted, the image on the continuous page remains on the top or bottom area; however, the printing time gets shorter. <input type="checkbox"/> If you select Single Cut and print only a piece of paper, the operation will be the same as Double Cut. If you print more than one paper continuously, cut 1 mm along the inside of each picture to avoid creating a margin between pictures. 	<ul style="list-style-type: none"> <input type="checkbox"/> The top area may smear because the top area of the roll paper is cut while the print operation is stopped. <input type="checkbox"/> Because the inside of each picture is cut in order to not leave a white area in the top and bottom areas, the length of the paper becomes 2 mm shorter. <input type="checkbox"/> After cutting the bottom area of the previous page, the printer feeds the paper and then cuts the top area of the next page. Because of that, 80 to 130 mm of scrap of paper is produced. Take care to cut the paper precisely.

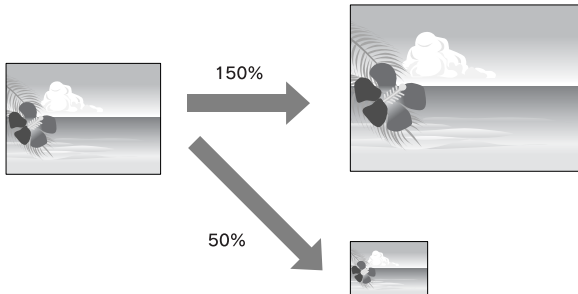
Note:
When you want to cut prints manually, select **Off**.

Enlarge or Reduce Size Printing

You can fit the size of your data to the size of paper you print on.

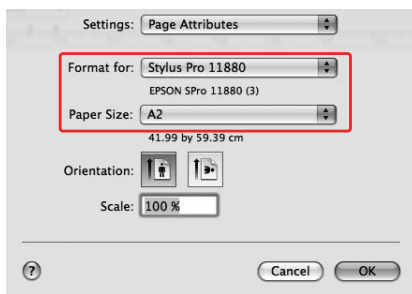
Custom

Lets you define the percentage you want to reduce or enlarge.

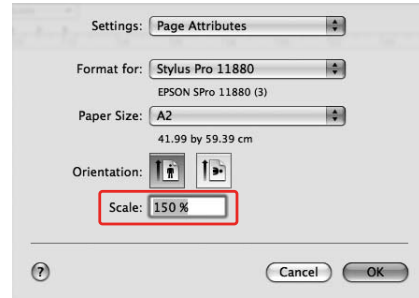


Note:
Use the standard feature of the operating system for layout printing.

- 1 Open the Page Setup dialog.
→ See "Accessing the Printer Driver" on page 6.
- 2 Select the printer and paper size.
Select the paper size that is loaded in the printer.



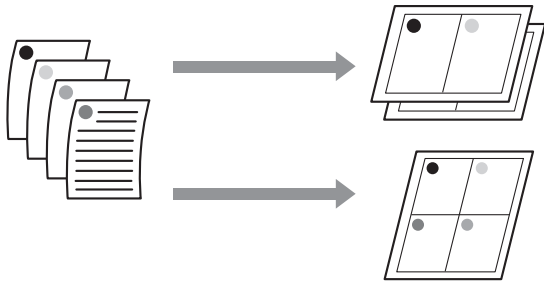
- 3 Set the value for Scale between 1 to 10000%.



- 4 Check the other settings, and then start printing.

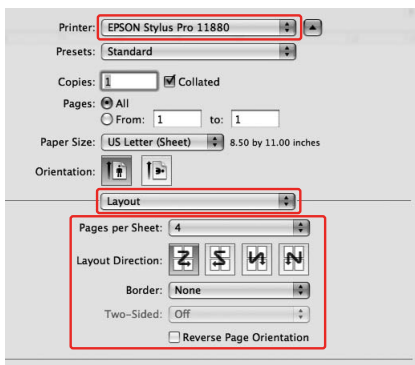
Pages Per Sheet Printing

You can print two or four pages of your document on one sheet of paper. If you print continuous layout data prepared at A4 size, it will be printed as shown below.



Note:
Use the standard feature of the operating system for layout printing.

- 1 Open the Print dialog.
→ See “Accessing the Printer Driver” on page 6.
- 2 Select a target printer, and then select **Layout** from the list to specify the order in which the pages will be printed.



Note:
If you select other than **None** for **Border**, the frames around the pages are printed on each sheet.

- 3 Check the other settings, and then start printing.

Printing on Custom Paper

You can also print on a custom paper, using the steps below.

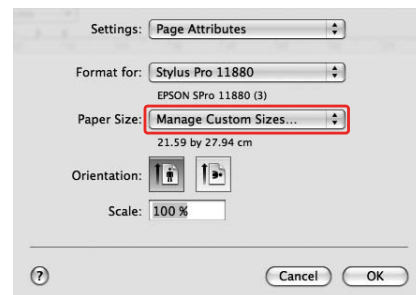


* The maximum length of the paper roll can be longer than the paper height if using application software that supports banner printing. However, the actual print size is dependent on the application, the paper size set in the printer, or the computer environment.

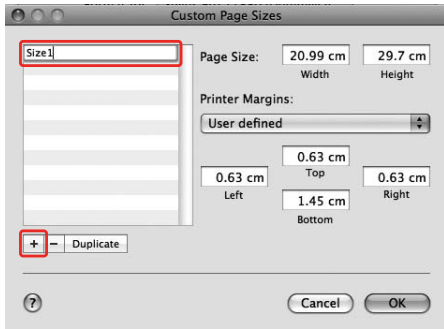
Note:

- ❑ You can set a larger size in the Custom Paper Size than the size that you can set in the printer; however, it does not print correctly.
- ❑ The available output size may be limited depending on the application software.

- 1 Open the Page Setup dialog.
→ See “Accessing the Printer Driver” on page 6.
- 2 Select **Manage Custom Sizes** in Paper Size.



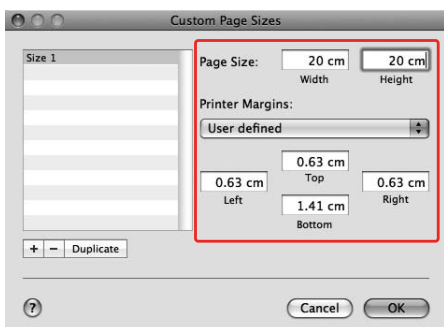
3 Click **+**, and enter the paper size name.



4 Enter the paper width, paper height, and margins, and then click **OK**.

The paper size and printer margin you can set is as follow.

Page setup	Paper size	Margins
Sheet	Supported paper size	Top, Left, Right: 3 mm Bottom: 14.2 mm
Roll Paper	Supported paper size	Top, Bottom, Left, Right: 3 mm
Roll Paper (Banner)	Supported paper size	Top, Bottom: 0 mm Left, Right: 3 mm
Roll Paper (Borderless, Auto Expand)	The paper width that supports borderless printing.	Top, Bottom, Left, Right: 0 mm
Roll Paper (Borderless, Retain Size) Roll Paper (Borderless, Banner)	The paper width that supports borderless printing and plus 6 mm.	Top, Bottom, Left, Right: 0 mm



Note:

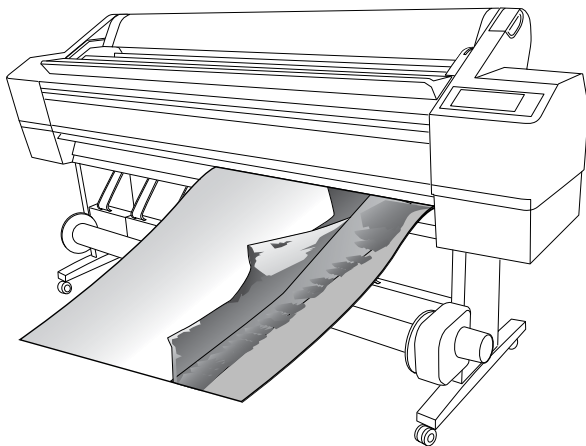
- To change the setting you have registered, click the paper size name from the list.
- To duplicate the paper size you have registered, click the paper size name from the list, and then click **Duplicate**.
- To delete the paper size you have registered, click the paper size name from the list, and then click **-**.
- The custom paper size setting is different depending on the version of the operating system. See your operating system's documentation for details.

5 Click **OK**.

The custom paper size is registered in the Paper Size pop-up menu. Now, you can print by taking the same steps as usual.

Banner Printing on Roll Paper

This section explains how to print a banner and panorama pictures.



There are two ways to print a banner.

Paper source	Application
Roll Paper	Document preparation tool, image and editing software
Roll Paper (Banner)	Software that supports banner printing

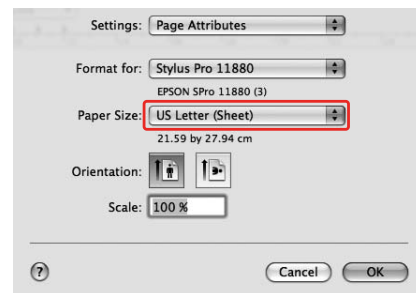
Application settings

You need to make the data for printing a banner using an application.

If the paper size you want to print is equal to or smaller than the maximum setting size the application can set, select the paper size you prefer.

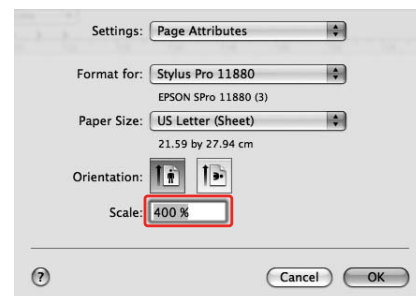
Printer driver settings

- 1 Open the Page Setup dialog.
→ See "Accessing the Printer Driver" on page 6.
- 2 Make sure your printer is selected, and select the document size created using the application.



You can also customize the paper size by selecting **Manage Custom Sizes**.

- 3 Input a scale to reduce or enlarge the size of your data.



- 4 Check the other settings, and then start printing.