

Support Bulletin

Product: EPSON StylusRIP Professional v3 for SP3800/4400/4800/7400/7800/9400/9800 ; SPR2400

Subject: Updater version 3.51 for Vista Support

EN	At present, this document is only available in English.
DE	Dieses Dokument ist gegenwärtig nur in Englisch verfügbar.
FR	A ce jour, ce document n'est disponible qu'en anglais.
IT	Attualmente questo documento è disponibile solo in lingua inglese.
PO	Atualmente este documento está unicamente disponível em inglês
ES	Atualmente este documento sólo está disponible en inglés.
NL	Dit document is op dit moment alleen in Engels verkrijgbaar.

1. Disk contents:

Product: EPSON StylusRIP Professional v3 (SRP3)
 Updater Version: 3.51
 Supported OS: Windows Vista only
 Supported Printers: Stylus Photo R-2400 ;
 Stylus Pro 3800 / 4400 / 4800 / 7400 / 7800 / 9400 / 9800
 Supported Languages: English / French / German / Italian / Portuguese / Spanish

2. Description:

To avoid any problem when printing using the Epson StylusRIP professional v3 application on Windows Vista, you need to install and use specific resources files designed for Vista support.

“SRP3_UpdaterV351” packages provide all the needed resources for Windows Vista support.

3. What do you need:

To perform the installation of the StylusRIP Professional on Vista computer, you need:

- Your Original EPSON StylusRIP Professional v3 CD-Rom with your License Key number.
- “SRP3_UpdaterV351” file corresponding to your printer model and to your CD-Rom disk volume reference.

Updater files can be downloaded from Epson support web sites: <http://esupport.epson-europe.com>

Caution: For SP4800, they are 2 different Updater files: vol300b and vol310b, please refer to the volume reference written on your installation CD-Rom to determine which one you need to download.

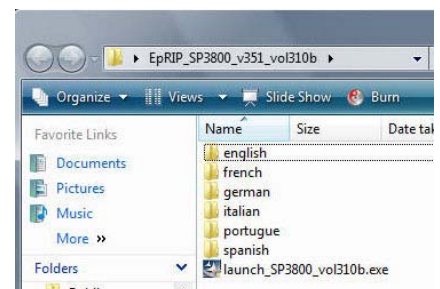
- You need to have the Epson printer's driver for Vista installed onto your computer and the port correctly configured (i.e. USB, Firewire, or Ethernet).
 Drivers can be found on Epson support web sites: <http://esupport.epson-europe.com>
- It is also recommended to use an Administrator account to perform all the installation process to avoid any rights problems.

4. How to Install the StylusRIP Professional v3 on your Vista computer:

Step1: Updater file extraction

After downloading the “SRP3_UpdaterV351” from the Epson Support Web page, you need to extract the content of this archive file onto your local Hard Drive.

When it is done, you get 1 folder containing PPD files for the 6 supported languages and also 1 executable file that allow starting the installation process.

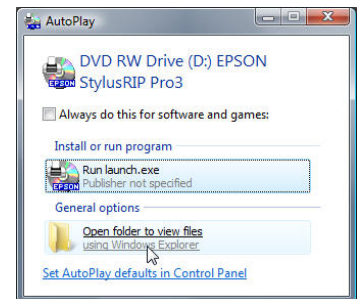


Step 2: Epson PS Port installation

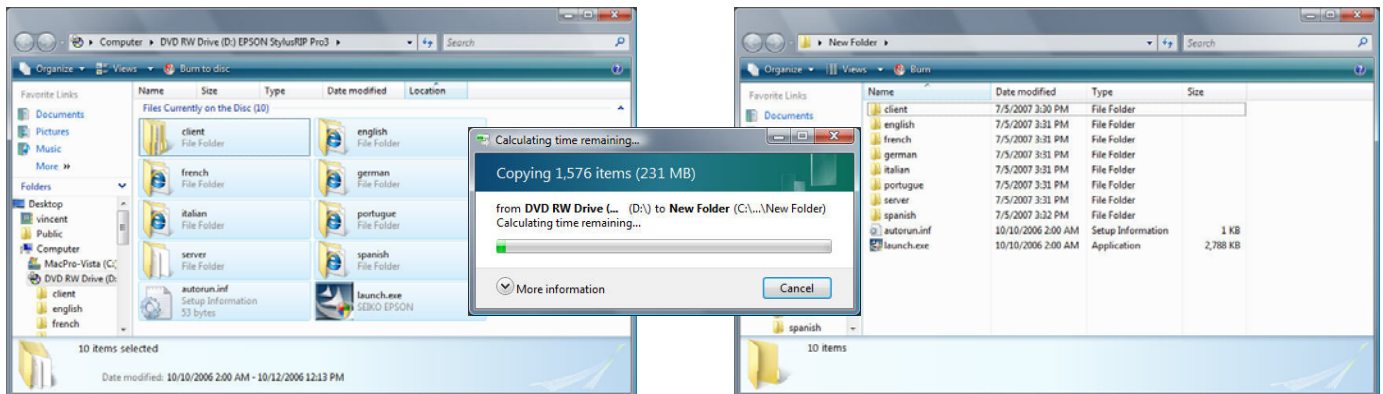
Before “really” starting the installation of the StylusRIP Professional onto your computer, we need to perform an additional operation to create the Epson PS Port that is needed for printing from the PS Server application.

On previous operating system (i.e. Windows XP), this PS Port creation was automatic but with Vista, we need to perform a dedicated process to install this port.
Without this Epson PS Port, you can't expect to print properly.

A/ Insert your Original EPSON StylusRIP Professional v3 CD-Rom and when the AutoPlay window shows up, choose the “Open folder to view files”.



B/ Select all the files contained on the CD-Rom and then copy them locally onto your local Hard Drive.

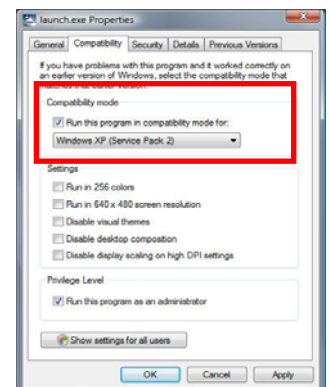


C/ When all files are copied on your local Hard Drive, open the properties of the “Launch.exe” file and select the “Compatibility” tab.

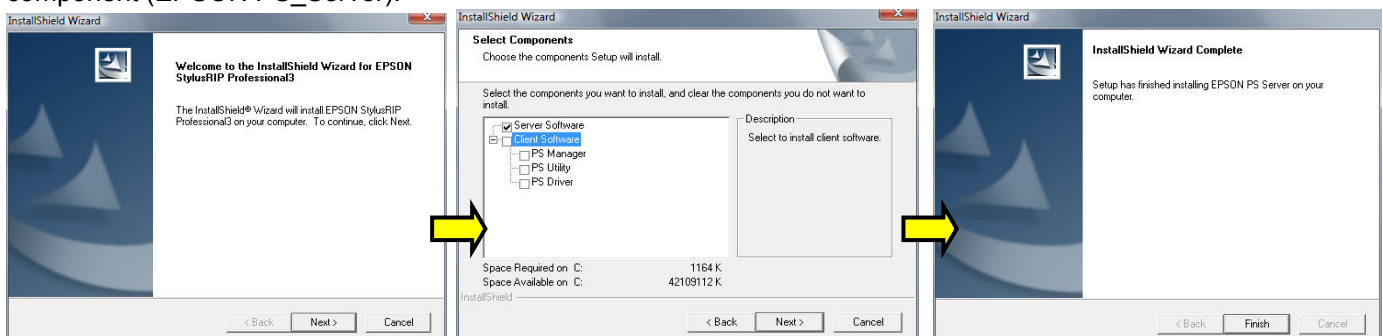
From this tab, enable the “Compatibility mode” and select Windows XP (Service Pack 2) as running mode.

You can also enable the “Privilege Level” to assure that you run this program as administrator.

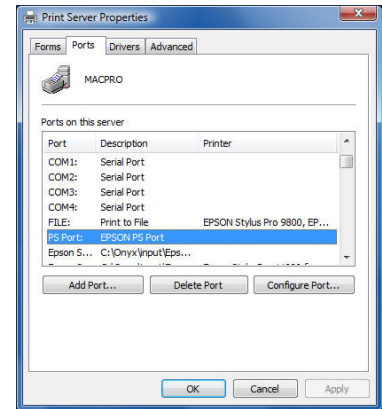
When it is done, press the “Apply” button to save your setting and press the “OK” button to close the Properties window.



D/ Then, execute the modified “Launch.exe” to start the installation process and install only the “Server Software” component (EPSON PS_Server).



E/ You can check that the Epson PS Port is correctly installed if it is present in the “Ports” list of the Print Server Properties or from the “Ports” list of any installed printer’s properties.

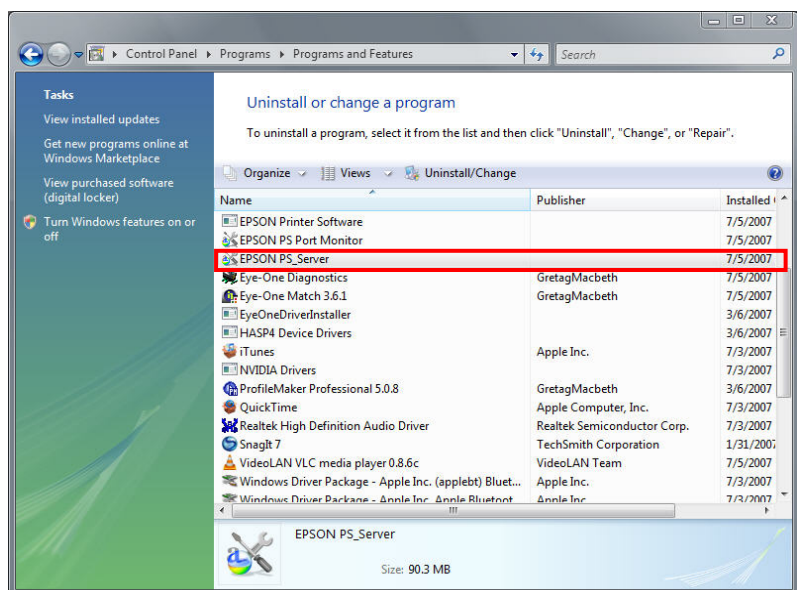


F/ Now that the Epson PS Port is correctly installed, you need to un-install the “Epson PS_Server” component from the “Control Panel → Programs and Features” menu.

Select the “Epson PS_Server” from the list and press the Uninstall/Change button.

Don’t uninstall the “EPSON PS Port Monitor”

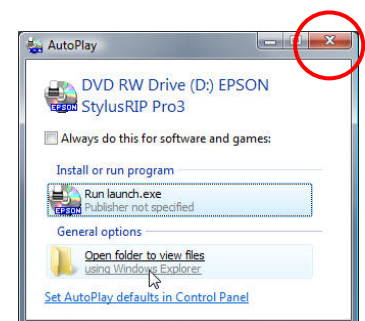
At the end of the uninstall process, restart your computer.



G/ Installation of the Epson PS Port is now completed, so now it is time to install properly the StylusRIP Professional application onto your Vista computer.

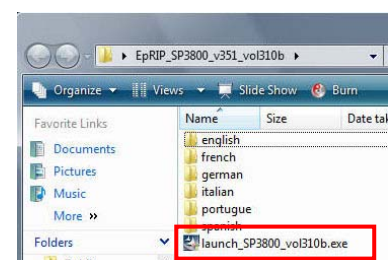
Step 3: Epson StylusRIP Pro installation

A/ Insert your Original EPSON StylusRIP Professional v3 CD-Rom and when the AutoPlay window shows up, just close it to cancel the automatic installation.

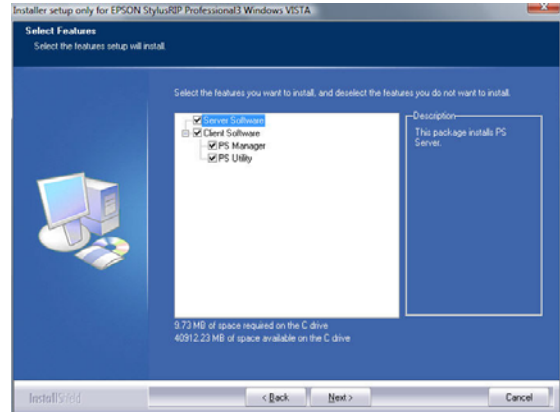
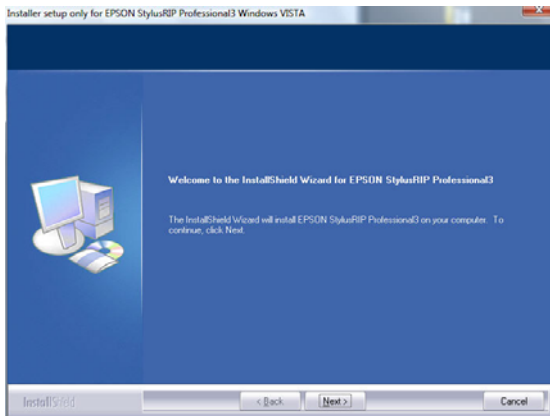


B/ Start the installation process using the executable file contained into the “SRP3_UpdaterV351” folder that you have already downloaded and expand onto your local drive.

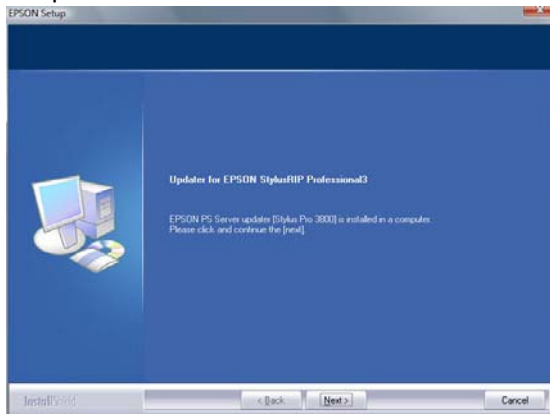
i.e. execute the “Launch_SP3800_vol3.10b.exe”



C/ Then follow instructions displayed on the screen to install the desired components of the Epson StylusRIP Pro v3 suite onto your Vista computer



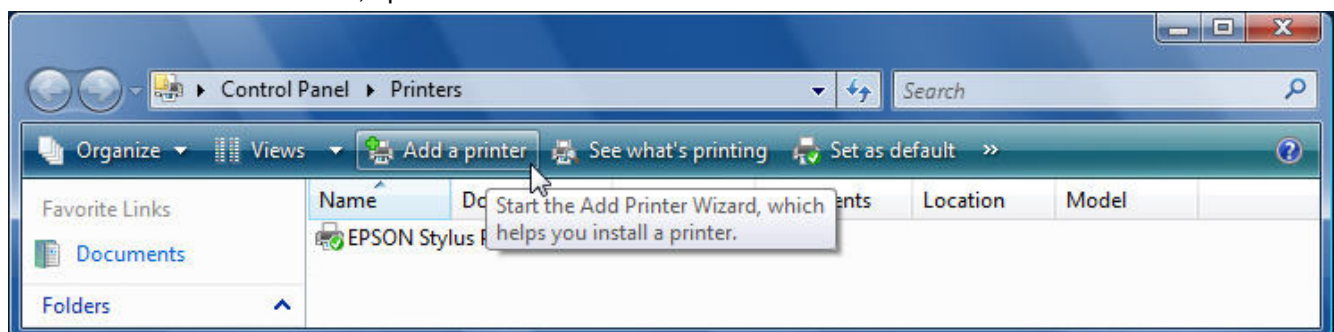
D/ When all the chosen applications are installed, the update process will automatically start. Just follow instructions displayed on the screen to install all the correct update files and resources onto your computer.



E/ Restart your computer to complete the Epson StylusRIP Professional installation.

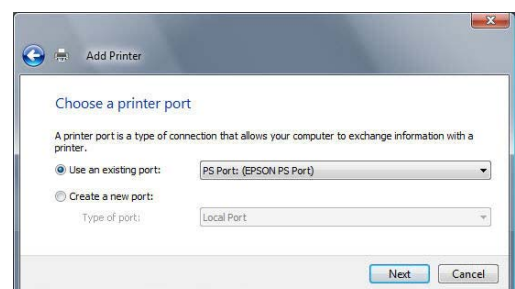
Step 4: Add a PostScript printer

A/ Once the SRP3 is installed, open the "Control Panel → Printers" menu and start the "Add a Printer" wizard.



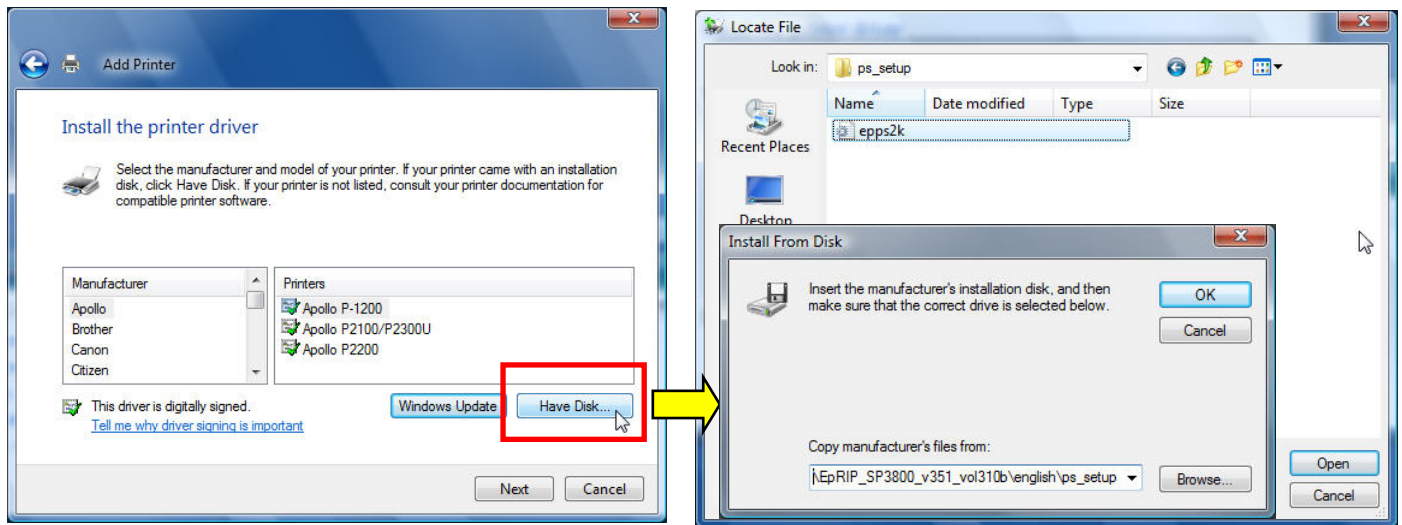
B/ Add a local printer, and then select the PS Port (Epson PS Port) as printer port.

If this port is missing, check that you have correctly performed the step 2.

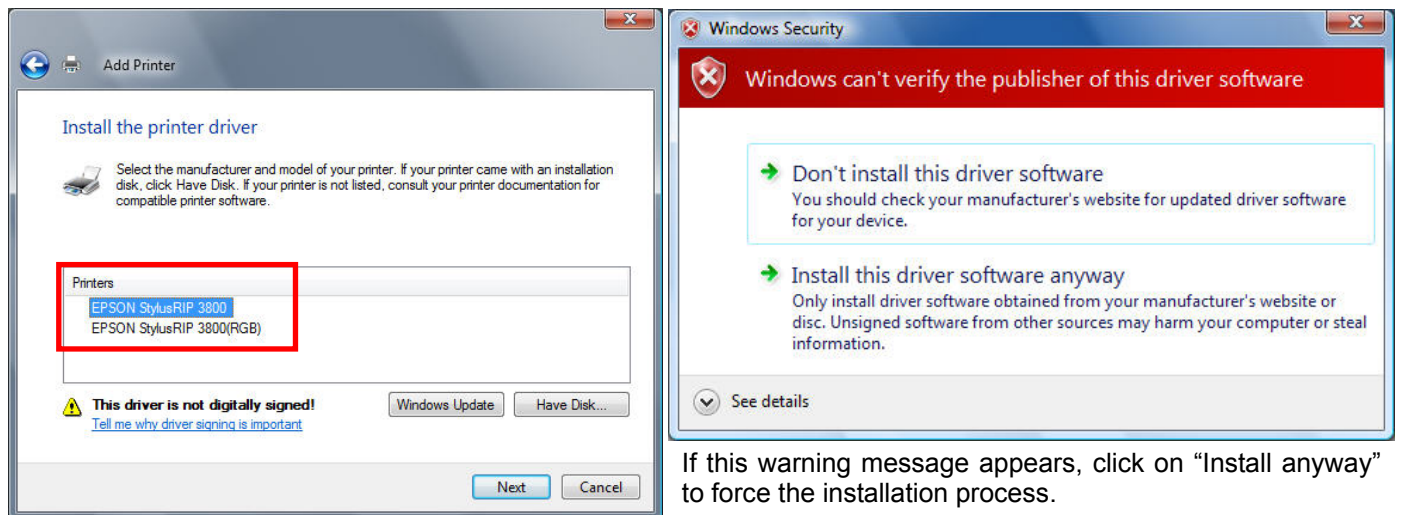


C/ From the “Install the printer driver” menu, click the “Have Disk” button and Open the PPD installer file (epps2k.inf) contained into the desired language folder located into the “SRP3_UpdaterV351” folder that you have already downloaded and expand onto your local drive.

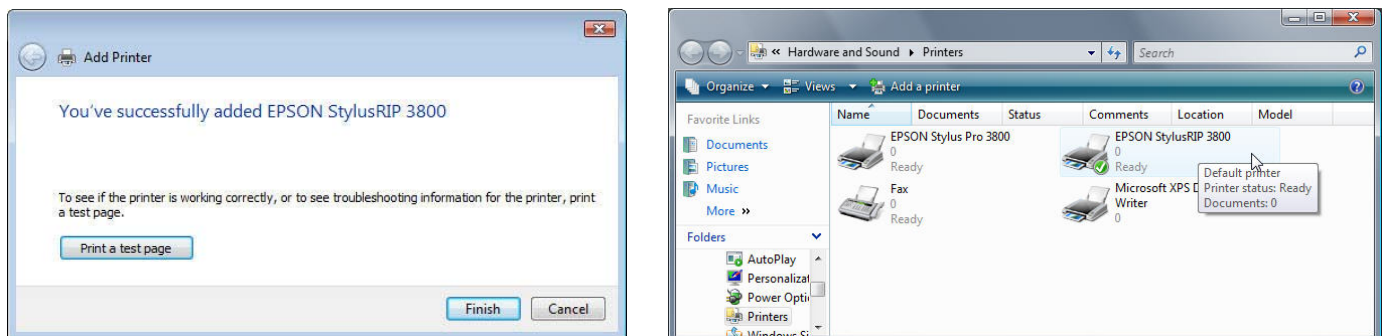
i.e. C:\EpRIP_SP3800_v351_vol310b\English\ps_setup folder



D/ Select the printer model that you want to install and then click the Next button to start the PS Driver installation process.

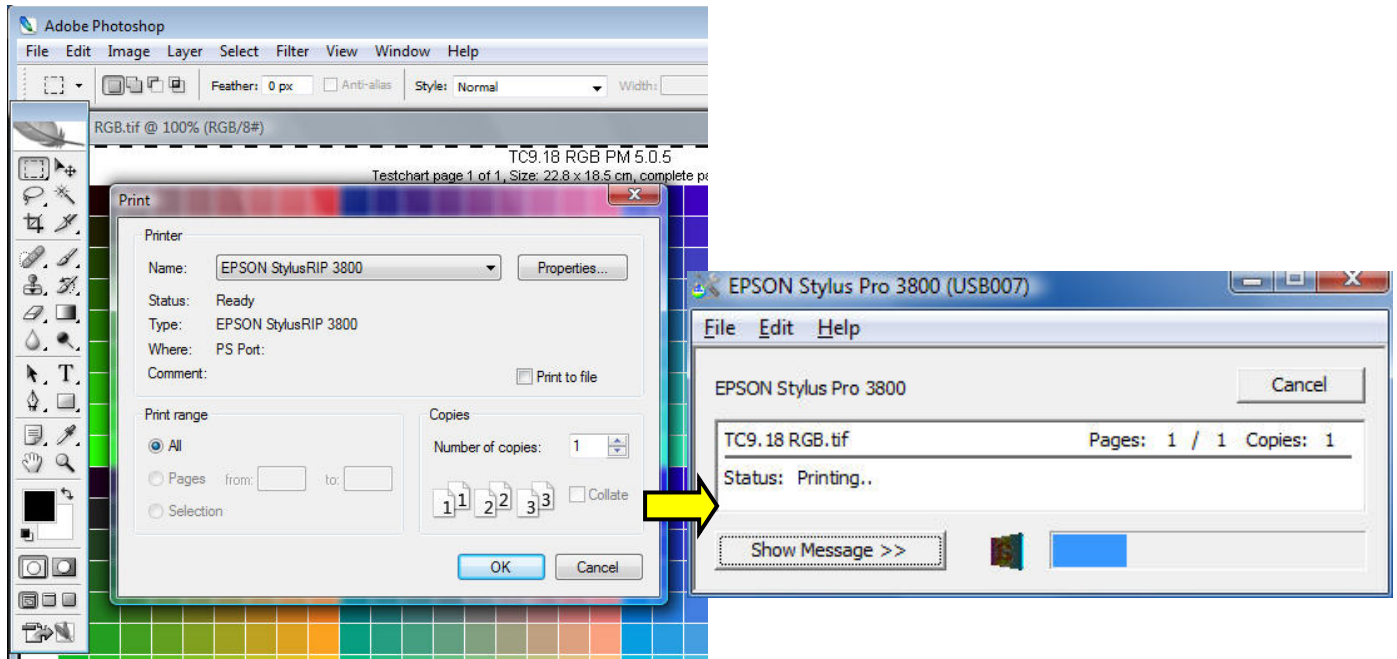


E/ Installation is now completed and the new Epson StylusRIP 3800 postscript printer can be seen and configured from the Control Panel → Printers menu.



Step 5: Printing from applications

It is now possible to use your new created Epson StylusRIP 3800 postscript printer to send print jobs to the Epson PS Server application through your own imaging application (i.e. Adobe Photoshop, Illustrator, Quark Xpress...).



5. How to check your Epson PS Server version:

To check that your StylusRIP professional sever application (Epson PS Server) is up to date (version 3.51), you need to open the About EPSON PS Server menu.

