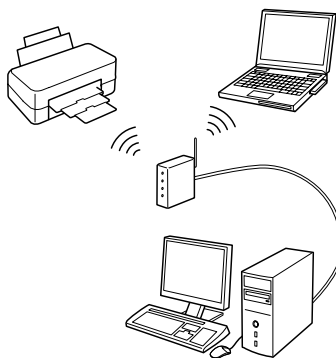


Wireless Networking Basics

This booklet helps you setup a wireless connection between your printer and computers. See the "Networking Guide" in the Online User's Guide if you want help with other network connections such as Wired LAN or Ad Hoc Mode.

Wireless LAN Connection

By using an access point (such as a wireless router), computers and printers can communicate wirelessly.



Setup Check Points

Before starting Wireless setup, check that the access point (or wireless router) is turned on.

Point 1. Firewall warning

Your firewall or anti-spyware software may display warnings during installation. Create an exception for EpsonNet EasyInstall to allow it to carry out network configurations.

For Windows XP Service Pack 2 or later

Confirm that the publisher is SEIKO EPSON, and then click **Unblock**.

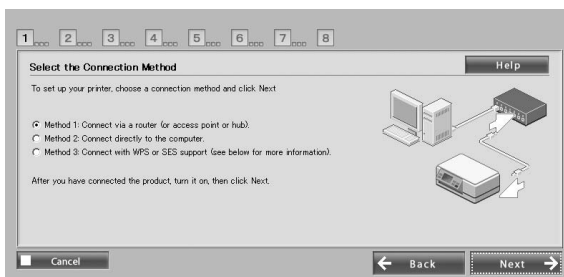
For Mac OS X 10.5.1 or later

Configure the Application Firewall to allow access for EpsonNet EasyInstall.

Point 2. Select a connection method

You need an Ethernet (wired) connection during installation.

Select the first or second method depending on your environment, and then click **Next**.



Using SES or WPS (Wireless Auto-Set)

To use SES or WPS, they must be supported by your access point (or wireless router). Complete the following steps without connecting an Ethernet cable.

1. Select the third method.
2. Enable SES or WPS on your access point.
3. Press and hold the **WiFi** button for three seconds, and then release. Check the two LED lights flash alternately.
4. After checking that wireless auto setup is complete and the two LED lights are lit, click **Next**.

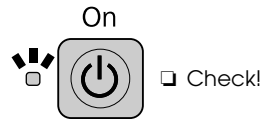
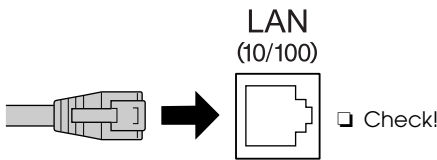
Once you have finished making wireless settings, select a printer and then skip to Point 8.

Point 3. Connect an Ethernet cable

Connect the access point (or wireless router) or your computer to the printer with an Ethernet cable.


Check the Ethernet cable is inserted in the Ethernet port.

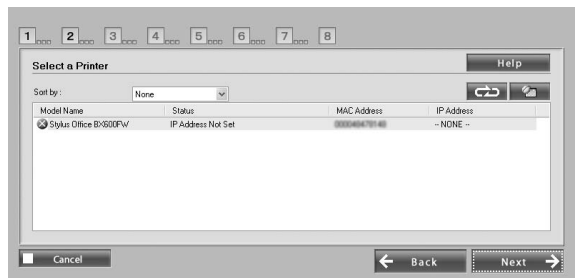
Check that the printer is turned on.



Point 4. Select a printer

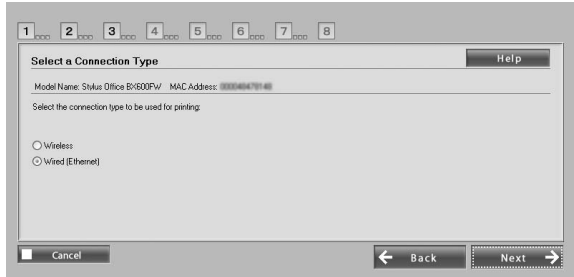
The software searches for and displays printers on the network. Select your printer.

Click  to refresh the printer list.



Point 5. Select a connection type

Select **Wireless** and then click **Next**.

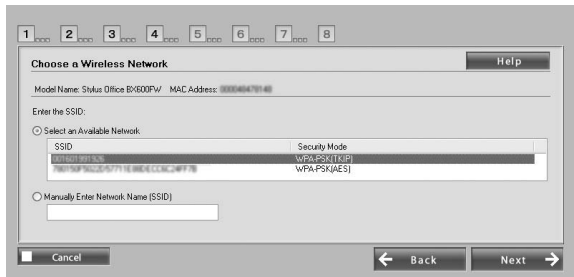


Point 6. Choose a wireless network

The software displays available Networks.

Select the same SSID (Network name) as used for your access point (or wireless router).

If the access point is running in stealth mode, enter the SSID directly.



Point 7. WEP/WPA security settings

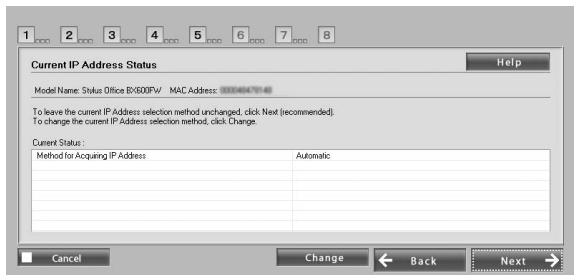
Enter the same WEP Key or WPA passphrase as used for your access point (or wireless router). Both are case-sensitive. Enter the same values as used for your access point.

To obtain these settings, see the documentation that came with your access point (or wireless router).

Point 8. Current IP address status

Check that **Method for Acquiring IP Address** is set to **Automatic**.



If you want to manually assign a unique IP address, click **Change** and then enter the IP Address, Subnet Mask, and Default Gateway.




Point 9. Remove the Ethernet cable

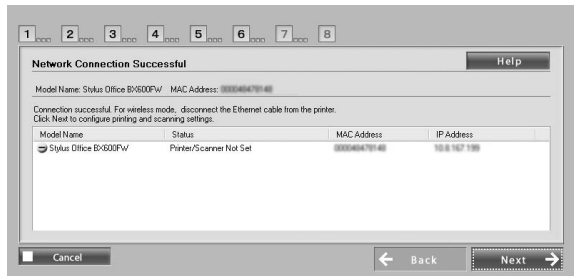
Remove the Ethernet cable when a message instructing you to do so is displayed.

Point 10. Confirm settings are complete

When network connection settings are completed successfully, a yellow  or green indicator  is displayed.

When network connection settings fail, a red indicator  is displayed.


Check all of the points or see Troubleshooting, and then reset the settings.

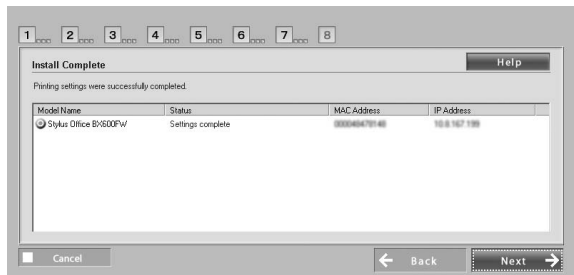


Point 11. Adding the printer (for Mac)

After setting up a network connection, EasyInstall closes. Then you can add the printer from Printer Setup Utility.

Point 12. Installation complete (for Windows)

When printer settings are complete, a green indicator  is displayed.




Troubleshooting

Cannot connect printer to the network

- ❑ Check the printer is turned on.
- ❑ Check the power cable is connected to the printer and the electrical outlet.
- ❑ Check the Ethernet cable is plugged in to the printer and the router.

Cannot find printer on the network

- ❑ Firewall or anti-spyware software may block EpsonNet EasyInstall. Create an exception for EpsonNet EasyInstall to allow it to carry out network configurations.
- ❑ If access restrictions are set on the access point (or wireless router), register the printer's Media Access Control (MAC) address or IP address to the access point. Check the MAC address on the network status sheet by pressing the  button.



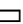
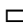

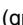



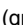



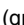

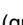




Cannot communicate using wireless LAN




- ❑ Check the printer is turned on.
- ❑ Check the access point (or wireless router) is turned on.
- ❑ After making network settings, check that the Ethernet cable is removed from the printer.
- ❑ Check the SSID (Network name) used on the access point is selected or entered correctly.
- ❑ The WEP Key or WPA Passphrase is case-sensitive. Check the WEP key or WPA passphrase is entered correctly.
- ❑ Move the printer closer to the access point or adjust the access point's external antenna.
- ❑ Radio wave interference from other wireless devices may interrupt wireless connection. Check that other wireless devices nearby are not turned on.

LED lights and buttons





LED lights on the printer indicate the network communication status.

See the online Networking Guide for details.

| Status | Indication | |
|-----------------------------------------------|------------------------------------------------------------------------------------------------------------------------------------------------------------------------------------------------------------------------------------------------|--------------------------------------------------------------------------------------------------------------------------------------------------------------------------------------|
| | Wireless | Wired |
| Warming up |  (orange)  (green) Flashing alternately | |
| Disconnected |  (orange)  (green) | |
| Connected |  (orange)  (green) |  (orange)  (green) |
| Connecting to network |  (orange)  (green) |  (orange)  (green) |
| Wireless auto setup in progress |  (orange)  (green) Flashing alternately PIN: Flashing at the same time | - |
| Wireless auto setup completed |  (orange)  (green) ^{*1} | - |
| Wireless auto setup error |  (orange)  (green) | - |
| Wireless auto setup error (No IP address set) |  (orange)  (green) ^{*1} | - |

 = off,  = on,  = flashing

*1 The Network status light (orange) turns off after five minutes.

| Network Buttons | |
|--------------------------------------------------------------------------------------------|--------------------------------------------------------------------------------------------------------------------------------------------------------------------------------------------------------------------------------------|
|  | Press and hold for three seconds to make easy wireless LAN settings. |
| | Press to release an easy wireless LAN setting error. |
| | Press and hold for about 10 seconds to initialize network settings. |
|  | Press to print a network status sheet. |
| WiFi +  | While holding down the WiFi button, press and hold the  button for about three seconds to make easy wireless LAN settings in WPS PIN mode. |

About the OPEN SOURCE SOFTWARE LICENSE

In addition to software program rights owned by Seiko Epson Corporation, this product also includes open source software. Refer to the "OPEN SOURCE SOFTWARE LICENSE TERMS" in the Online User's Guide for a list of open source software and software license terms applied to this printer.