

# Message Broadcasting

Message Broadcasting is a plug-in for EasyMP Monitor. Administrators can use the plug-in to send messages or announcements to one or more projectors or all the projectors on the network. You can send messages manually, or use the Timer function in EasyMP Monitor to have messages sent automatically.

## *Operating environment*

Before you install the Message Broadcasting plug-in, make sure EasyMP Monitor (version 4.50 or later) is installed and the following requirements are met.

- Compatible computers  
Windows® 7, Windows Vista®, Windows XP, or Windows 2000 Professional
- Make sure your projectors support Message Broadcasting; check [www.epson.com/support](http://www.epson.com/support) if necessary.
- The projectors you want to send your message to must have been registered in EasyMP Monitor.

## *Installing Message Broadcasting*

Follow the instructions on the Epson website for downloading and installing.

## *Creating Messages*

Create a message file or files in the JPEG format. JPEG images with up to 1920 x 1200 pixel resolution can be sent.

The easiest way to create messages in the JPEG format is to save slides from Microsoft® PowerPoint® as .JPG files.

1. After you create a slide or series of slides in PowerPoint, open the File menu and select Save As.

### **note**

*If any of the projectors you select are switched off, they will power on automatically when you begin Message Broadcasting. For network communication, make sure the Standby Mode setting in the projectors' Extended menu is set to Communication On.*

- For the file type, select JPEG File Interchange Format (\*.jpg), then click **Save**.  
If you are working with a series of slides, you can select whether you want to save **Every Slide** or **Current Slide only**.

## ***Broadcasting Messages***

You can broadcast a single JPEG file or select a folder containing a series of JPEG files to broadcast as a slideshow.

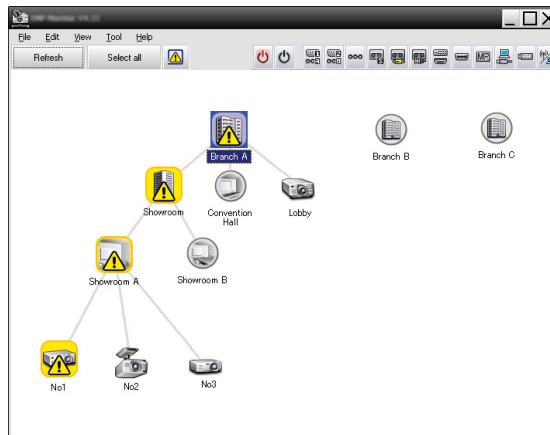
### ***Broadcasting Manually***

You can manually select a JPEG file or folder that includes a series of JPEG files to broadcast it.

#### ***note***

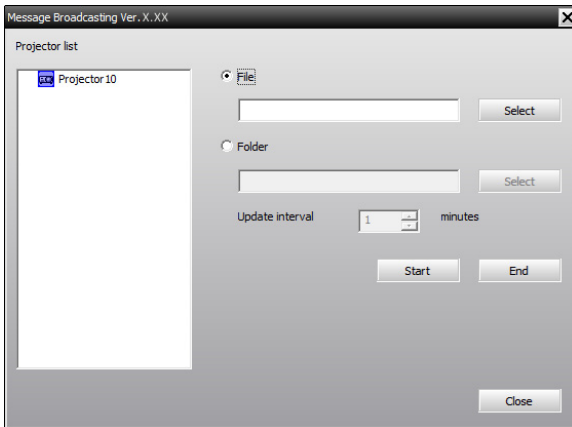
*This screen shows an example of Grouping view. Your screen will look different in Detail list view.*

- Start EasyMP Monitor.  
You may see a screen like the following, showing your registered projectors and groups:



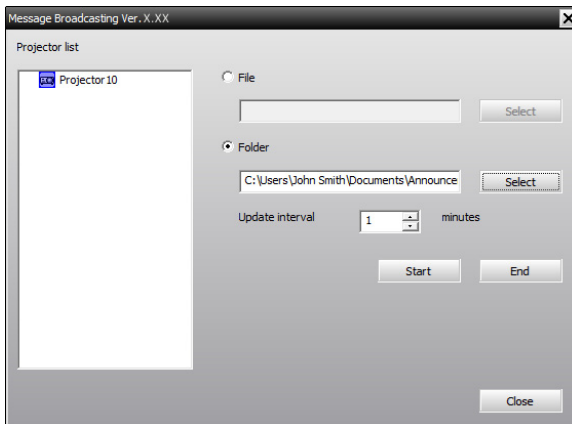
2. Open the Tool menu and select Plug-in > Message Broadcasting.

You see the Message Broadcasting window:



3. Select the projector or group you want to send your message to.
4. Select either one of the two checkboxes.  
File: select this to broadcast a single file.  
Folder: select this to broadcast a series of files as a slideshow.
5. Click Select, then select the file or folder you want to broadcast.

You see the file or folder on the Message Broadcasting window:



---

**note**

Projector users or presenters can end the message broadcast at any time by pressing the Esc button on the projector or remote control.

Once the Esc button is pressed, the projector will not receive broadcast messages until it is restarted.

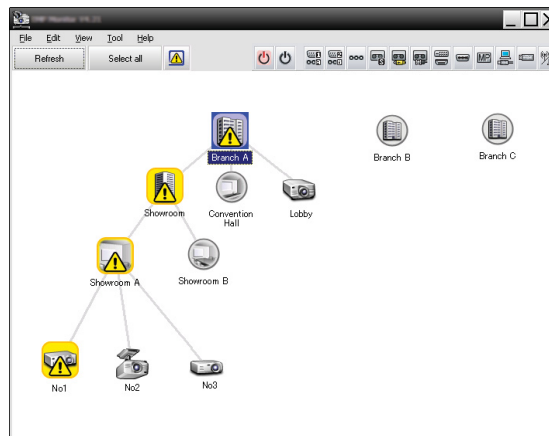
---

- If you have selected a folder, you can specify the timing between slides.  
Select the number of minutes for the Update interval.
- Click **Start**.  
Your message or slideshow is sent to the selected projector or group.  
If a projector is already operating, the Message Broadcasting will interrupt the existing projection.
- When you want to end the message display or slideshow, click **End**.  
If you do not click End, the message will remain on the screen.  
If you are broadcasting a slideshow, it will repeat until you end it.

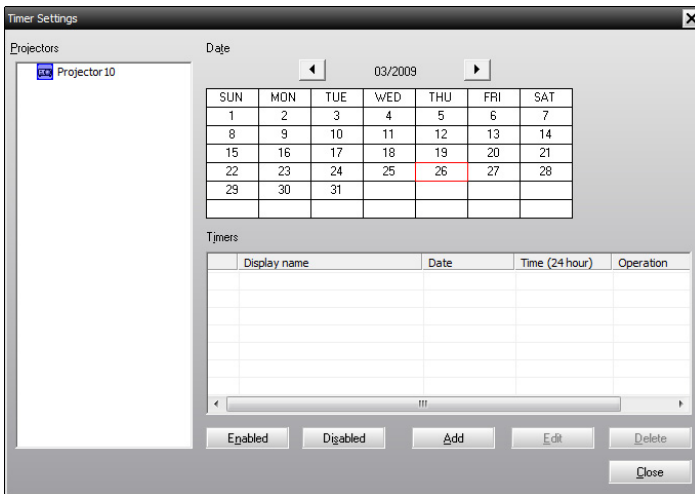
## ***Broadcasting Automatically***

You can use the Timer function in EasyMP Monitor to set up slideshows or messages for automatic broadcasting.

- Start EasyMP Monitor.  
You may see a screen like the following, showing your registered projectors and groups:

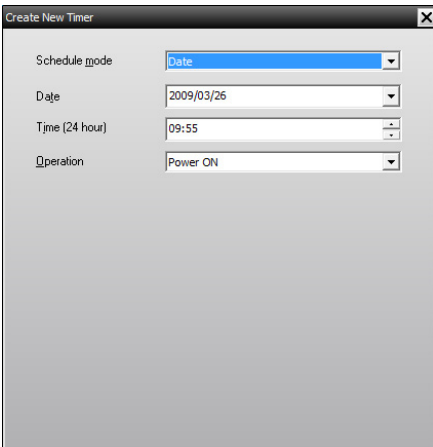


- Open the Tool menu and select Timer > Timer Settings.  
You see the Timer Settings window:

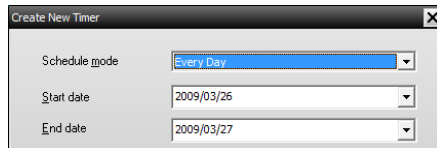


- Select the projector or group you want to send your message to.
- Click Add.

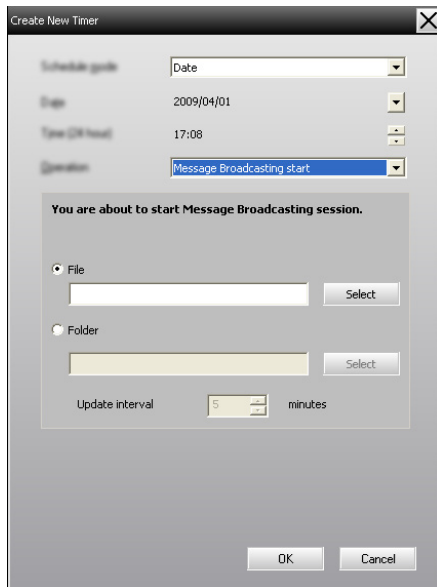
You see the Create New Timer window:



5. Click  in the Schedule mode box and select one of the following:
  - **Date**—Select the date you want to broadcast.
  - **Every Week**—Select the start and end dates, and the day or days you want to broadcast.
  - **Every Day**—Select the start and end dates for the daily broadcast.

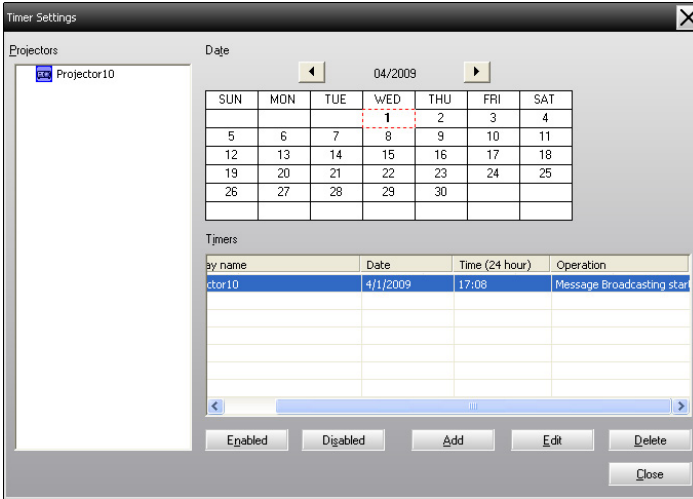


6. Select the time you want to start broadcasting.
7. Click  in the Operation box and select **Message Broadcasting start**, then click **OK**.  
You see the following:



8. Select either one of the two checkboxes.  
**File:** select this to broadcast a single file.  
**Folder:** select this to broadcast a series of files as a slideshow.

9. Click **Select**, then select the file or folder you want to broadcast.
10. If you are broadcasting a slideshow, you can specify the timing between slides.  
Select the number of minutes for the **Update interval**.
11. Click **OK**.  
You see your schedule in the **Timer Settings** window:



12. Select the time you want to end broadcasting.  
Click **Add**, select the time, then select **Message Broadcasting start** end in the **Operation** box and click **OK**.  
You must set the end time; otherwise, your message broadcast will continue indefinitely.  
  
You can use the buttons at the bottom of the screen to enable, disable, edit, or delete your timer settings.
13. When you are finished adjusting timer settings, click **Close** to save the settings.

---

**note**  
*Projector users or presenters can end the message broadcast at any time by pressing the Esc button on the projector or remote control.*

*Once the Esc button is pressed, the projector will not receive broadcast messages until it is restarted.*

---

## *Solving Problems*

If messages fail to display on the selected projectors, check the following:

- If the message does not appear on any of the projectors, check the firewall settings on the computer running EasyMP Monitor. Make sure EasyMP Monitor is selected as an exception.
- If an individual projector fails to display the message, make sure the **Standby Mode** setting in the projector's **Extended** menu is set to **Communication On**.
- If a projector user or presenter has pressed the Esc button to stop the message broadcast, the projector will not receive messages until it is restarted. Try restarting the projector.