

Support Bulletin

Product: SPro 7400 / 7450 / 7700 / 7800 / 7880 / 7890 / 7900 / 9400 / 9450 / 9700 / 9800 / 9880 / 9890 / 9900 / 11880

Subject: ICC profiles for Matte Backlit Film 170µm (Ver 4.0)

| | |
|----|--|
| EN | At present, this document is only available in English. |
| DE | Dieses Dokument ist gegenwärtig nur in Englisch verfügbar. |
| FR | A ce jour, ce document n'est disponible qu'en anglais. |
| IT | Attualmente questo documento è disponibile solo in lingua inglese. |
| PO | Atualmente este documento está unicamente disponível em inglês. |
| ES | Atualmente este documento sólo está disponible en inglés. |
| NL | Dit document is op dit moment alleen in Engels verkrijgbaar. |

This bulletin provides information on the ICC profiles for the Matte Backlit Film 170µm.

1. File Information:

| | |
|----------------------------|--|
| File Name: | ICC Profiles for the Matte Backlit Film 170µm |
| Version: | 4.0 |
| Supported OS: | Windows 98 / ME / NT / 2000 / XP / Vista / Seven; MacOS 8 / 9 / 10.2 or later |
| Supported Printers: | Stylus Pro 7400 / 7450 / 7700 / 7800 / 7880 / 7890 / 7900 / 9400 / 9450 / 9700 / 9800 / 9880 / 9890 / 9900 / 11880 |

2. Profiles Description:

These RGB ICC profiles are intended to be used to print with Matte Backlit Film 170µm using EPSON Professional Inkjet printers and their standard printer drivers.

| Profile Name | Printer Model | Black Ink Type | EPSON Driver Media Type |
|--|------------------------|----------------|-------------------------|
| Pro 7400 Matte Backlit film_MK.icm | Stylus Pro 7400 | Matte Black | Enhanced Matte Paper |
| Pro 7450 Matte Backlit film_MK.icm | Stylus Pro 7450 | Matte Black | Enhanced Matte Paper |
| Pro 7800 Matte Backlit film_MK.icm | Stylus Pro 7800 | Matte Black | Enhanced Matte Paper |
| Pro 7880 Matte Backlit film_MK.icm | Stylus Pro 7880 | Matte Black | Enhanced Matte Paper |
| Pro 9400 Matte Backlit film_MK.icm | Stylus Pro 9400 | Matte Black | Enhanced Matte Paper |
| Pro 9450 Matte Backlit film_MK.icm | Stylus Pro 9450 | Matte Black | Enhanced Matte Paper |
| Epson Stylus Pro 7700_7710_9700_9710 Matte Backlit film_EMP_Trans_MK.icm | Stylus Pro 7700 / 9700 | Matte Black | Enhanced Matte Paper |
| Pro 9800 Matte Backlit film_MK.icm | Stylus Pro 9800 | Matte Black | Enhanced Matte Paper |
| Pro 9880 Matte Backlit film_MK.icm | Stylus Pro 9880 | Matte Black | Enhanced Matte Paper |
| Epson Stylus Pro 9890_9908_7890_7908 Matte Backlit Film_MK.icc | Stylus Pro 7890 / 9890 | Matte Black | Enhanced Matte Paper |
| Pro 9900_7900 Matte Backlit film_MK.icm | Stylus Pro 7900 / 9900 | Matte Black | Enhanced Matte Paper |
| Pro 11880 Matte Backlit film_MK.icm | Stylus Pro 11800 | Matte Black | Enhanced Matte Paper |

3. Installing ICC Profiles for Matte Backlit Film 170µm

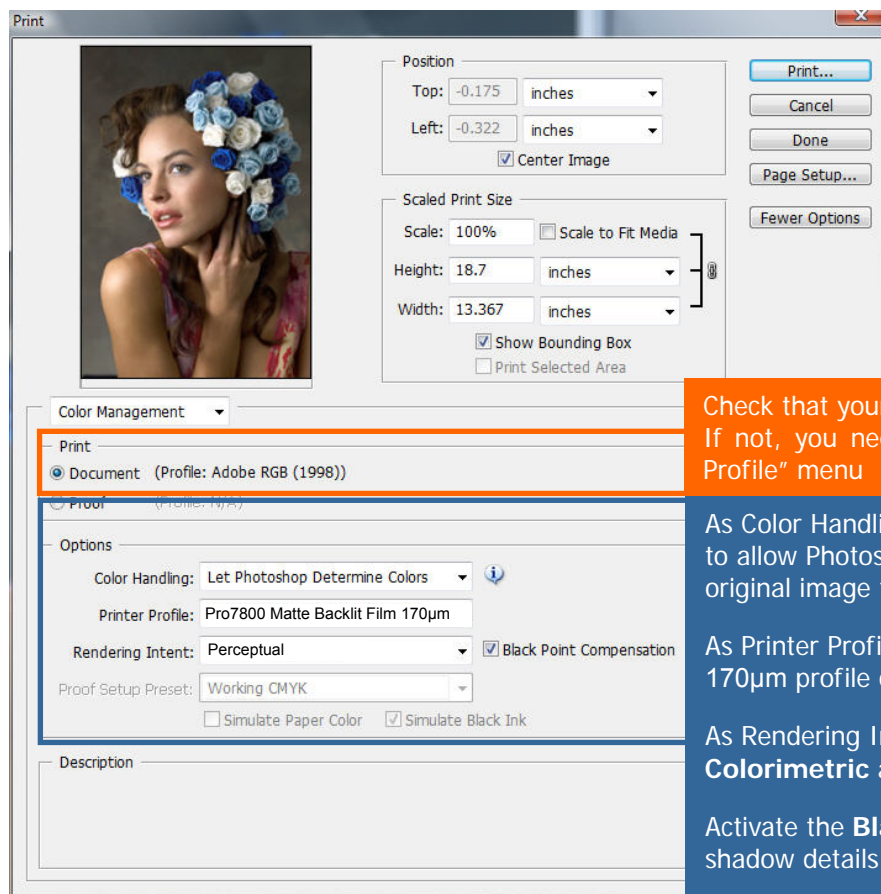
To install these ICC profiles on your computer, you need to place them into the Operating System's profiles location. The following table provides the standard location according to the OS:

| Operating System | Location of ICC Profiles |
|----------------------------|--|
| Windows 98 / ME | Windows / System / Color |
| Windows NT | Winnt / System32 / Color |
| Windows 2000 | Winnt / System32 / Spool / Drivers / Color |
| Windows XP / Vista / Seven | Windows / System32 / Spool / Drivers / Color |
| MAC OS 8 / 9 | System Folder / ColorSync Profiles |
| MAC OS 10.2 or later | Library / ColorSync / Profiles |

4. How to print using ICC Profiles from Adobe Photoshop

As example, this chapter shows the required Epson driver settings when you are printing from Adobe Photoshop CS2.
NB: This setting may slightly differ according to the version of Photoshop and to the Epson printer model.

- 4.1 Start Photoshop and Open the image that you want to print using ICC profiles.
- 4.2 Open the “File → Print with Preview” window of Photoshop and select the Color Management menu.
- 4.3 Check that your image has a assigned “input” profile
- 4.4 Define the Options needed to print using ICC profiles from Photoshop.



Check that your document has an assigned “input” profile.
If not, you need to select a profile from the “Edit → Assign Profile” menu

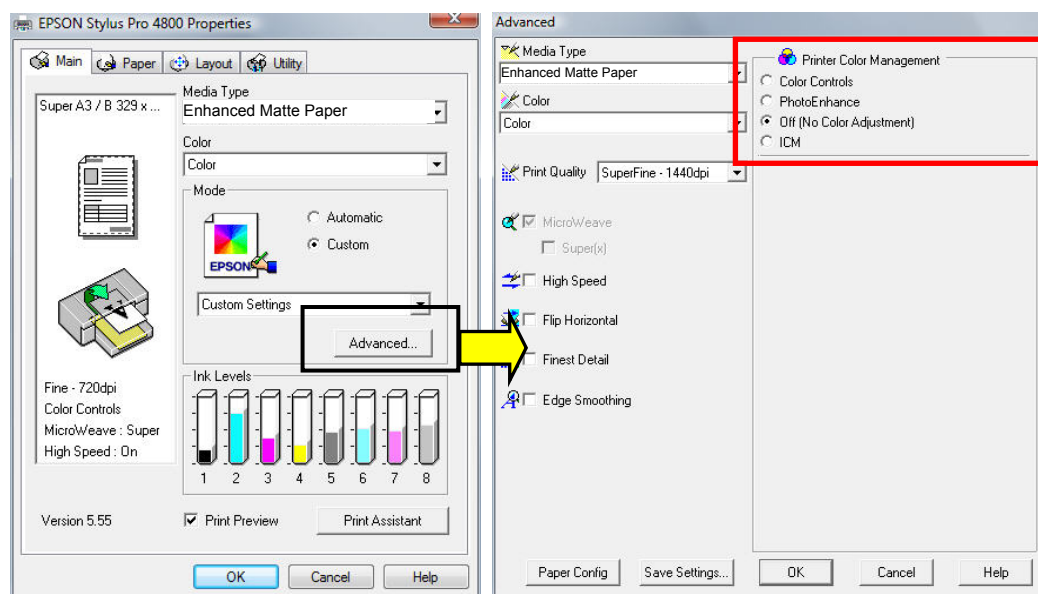
As Color Handling, select **Let Photoshop Determine Colors** to allow Photoshop to perform all the color conversion from the original image to the printed result.

As Printer Profile, select from the list the Matte Backlit Film 170µm profile of your printer model.

As Rendering Intent, select **Perceptual** or **Relative Colorimetric** according to your image type and color gamut

Activate the **Black Point Compensation** to ensure that shadow details will be preserved.

- 4.5 Click on the Page Setup button to open the Epson printer driver’s properties and open the Advanced menu.
- 4.6 From the Advanced menu, select the correct Media Type, as well as the desired print quality settings and disable the Printer Color Management by setting it to Off (No Color Adjustment).



When you print using the Color Handling **Let Photoshop Determine Colors**, it's very important to disable the printer color management by setting it to **Off (No Color Adjustment)**, otherwise you will apply a double color conversion process (one by Photoshop + one by the printer driver) that will generate inaccurate color results.

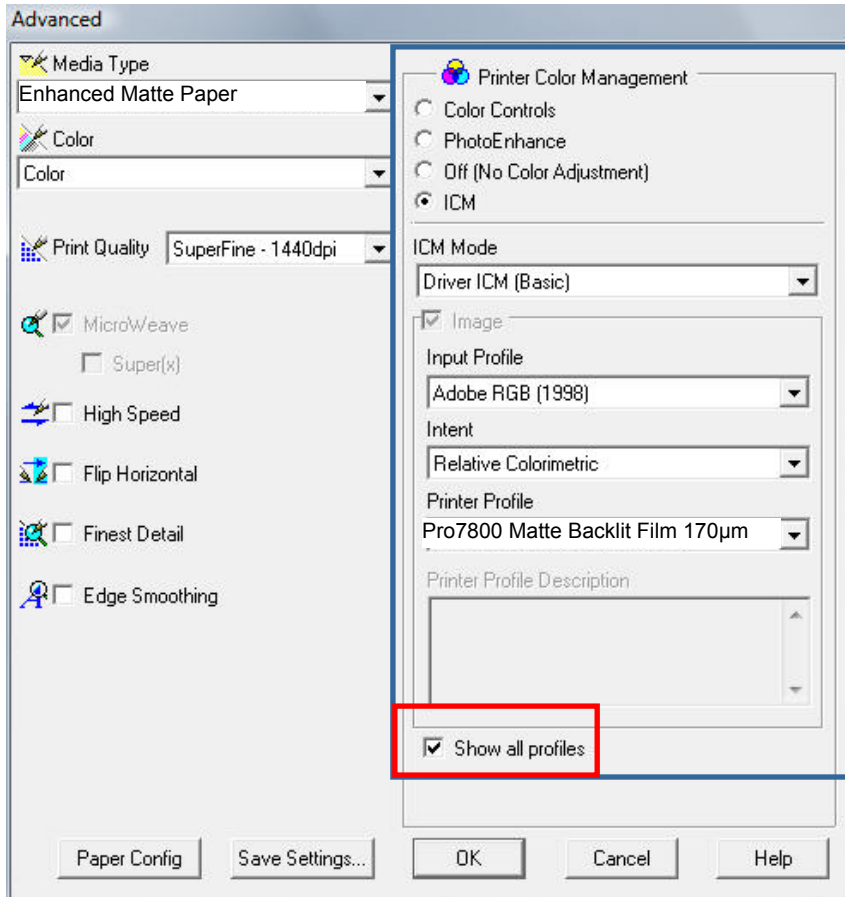
- 4.7 Finally, press the Ok button to exit the printer driver and on the Print button of Photoshop to print your document using your correct ICC workflow.

5. How to print using ICC Profiles directly from the Epson printer driver

If your application is not managing ICC workflow, you can print using ICC profiles directly from the Epson driver.

NB: It's not possible to use custom profiles with all the Epson printer models, so please refer to your user's guide to check if your printer and especially your printer driver allows this feature.

- 5.1. From your application, select the Print menu to open the Epson printer driver's properties and open the Advanced menu.
- 5.2. From the Advanced menu, select the correct Media Type, as well as the desired print quality settings and choose ICM as Printer Color Management setting.



Select the **ICM** as Printer Color Management mode.

The first thing to do is to enable the **Show all profiles** option that will allow you to see and select all the ICC profiles installed on your computer.

As ICM Mode, select the **Basic** mode.

As Input Profile, select your document profile or define a profile by choosing it from the list. **Adobe RGB (1998)** or **sRGB** profiles are both suited for color images printing.

As Intent, choose **Perceptual** or **Relative Colorimetric** according to your document type and color gamut

As Printer Profile, select from the list the **Matte Backlit Film 170 µm** profile of your printer model.

- 5.3. Finally, press the Ok button to exit the printer driver and on the Print button of your application to print your document using your Epson driver's ICC workflow.