

EPSON
EXCEED YOUR VISION

Home Cinema

EH-TW9100
EH-TW8100

EN	Quick Start Guide	CS	Úvodní příručka
DE	Kurzanleitung	HU	Bevezetés
FR	Guide de démarrage rapide	PL	Przewodnik szybkiego startu
IT	Guida di avvio rapido	EL	Οδηγός γρήγορης εκκίνησης
ES	Guía de inicio rápido	TR	Hızlı Başlangıç Kılavuzu
PT	Guia de Referência Rápida	RU	Руководство по быстрой установке
NL	Introductiehandleiding	UK	Коротка інструкція "Початок роботи"
DA	Introduktion	AR	دليل البداية السريعة
FI	Pika-aloitusopas	HE	מדריך להפעלה מהירה
NO	Hurtigveiledning	ZHS	設定手册
SV	Snabbstartsguide	ZHT	設定說明書



FULL HD
3D
GLASSES

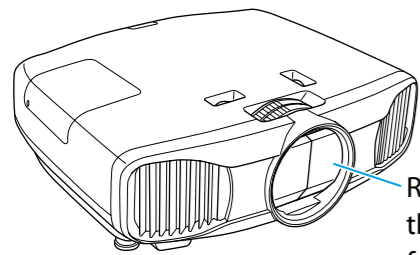
3D

Full HD
1080p

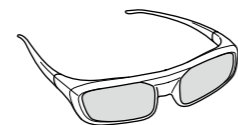
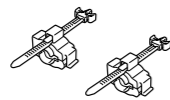
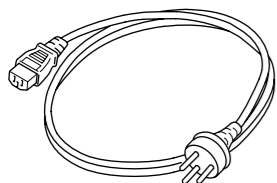
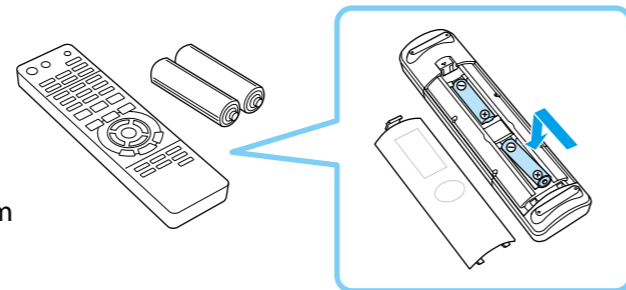
HDMI
HIGH DEFINITION MULTIMEDIA INTERFACE

3LCD

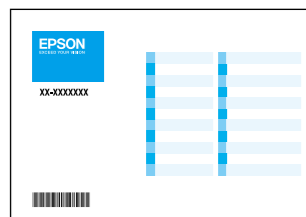
Unpacking



Remove protective tape from the lens shutter when using for the first time.



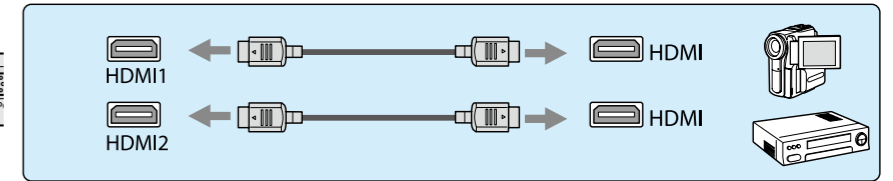
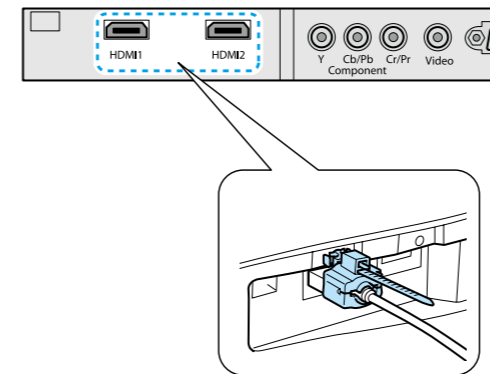
Depending on the model and the country, 3D Glasses may not be supplied, or the number of pairs of glasses may differ.



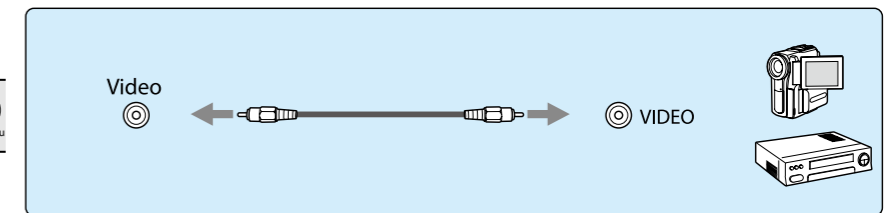
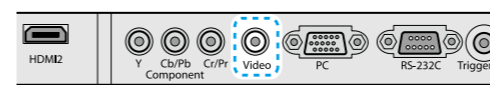
USB Charging Adapter (for charging 3D Glasses)
The design may vary depending on the country and area of use.

Connecting

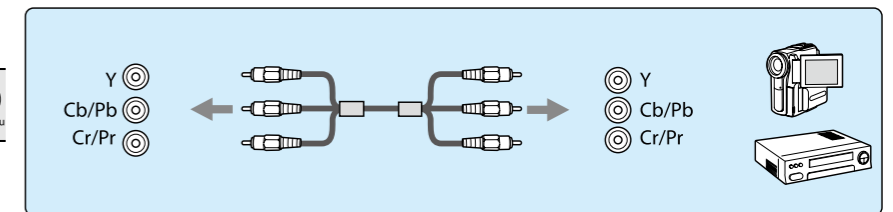
HDMI Cable



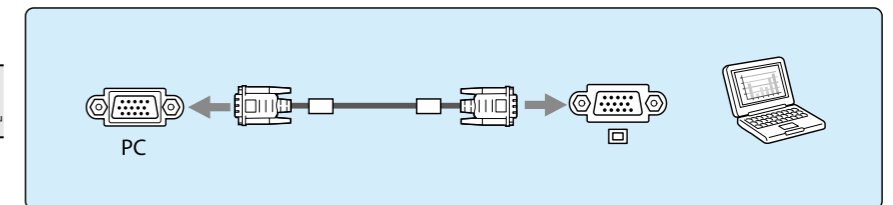
Video Cable



Component Cable

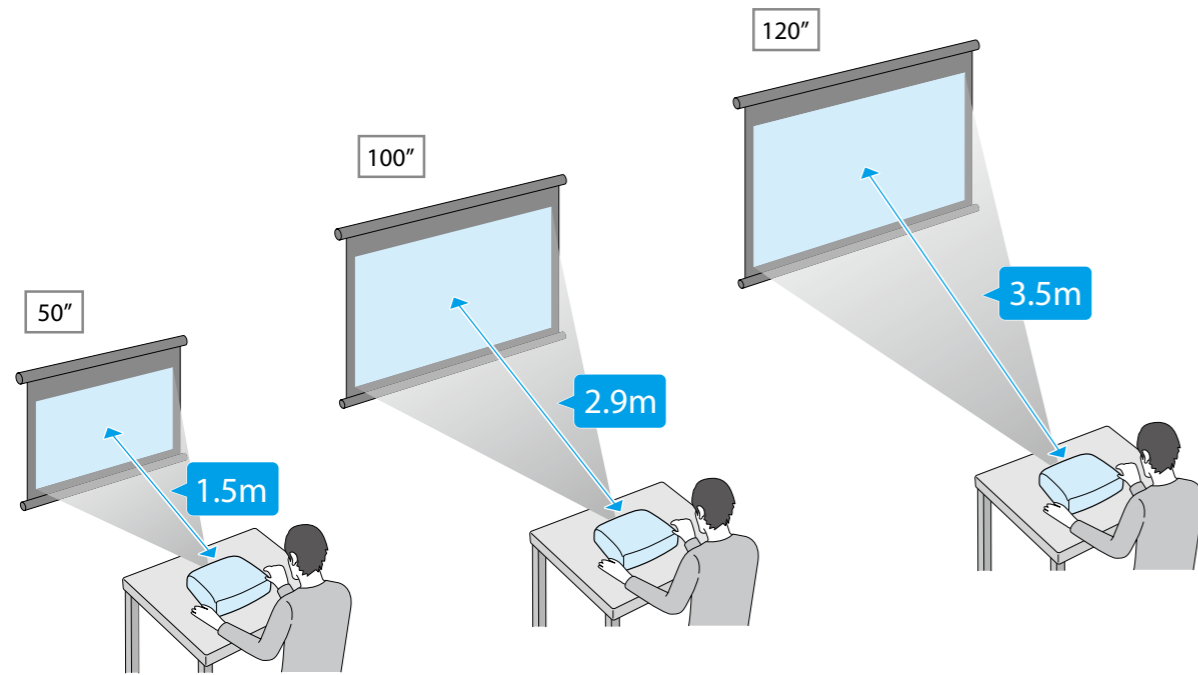


Computer Cable

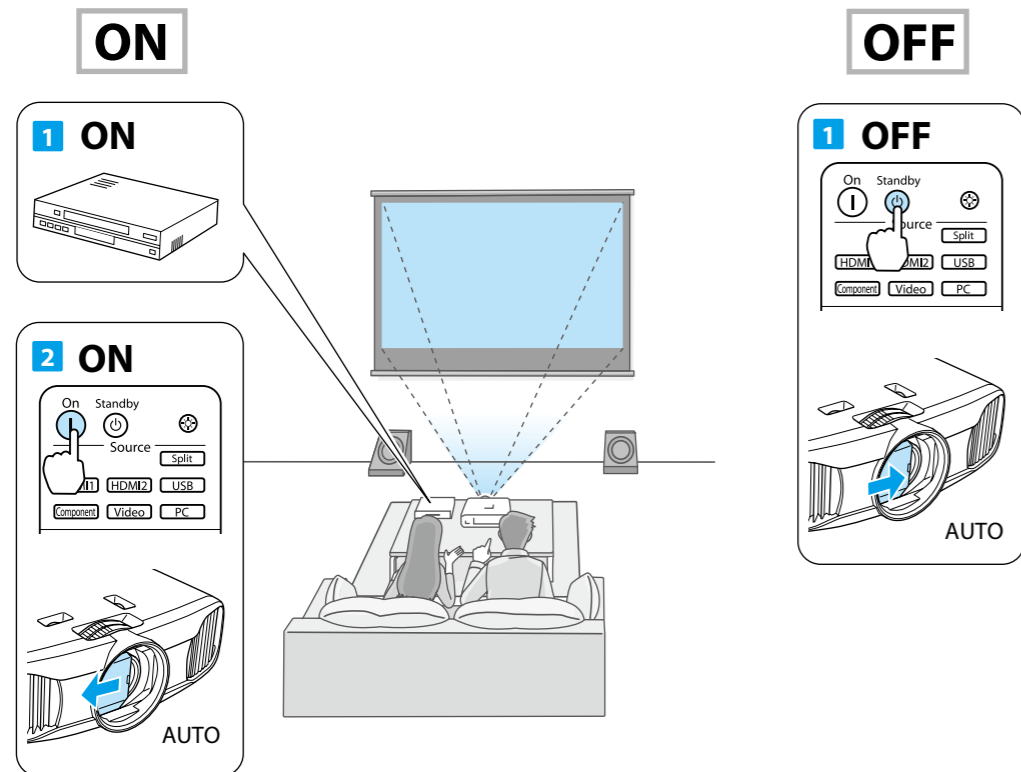


Setting Up

16:9

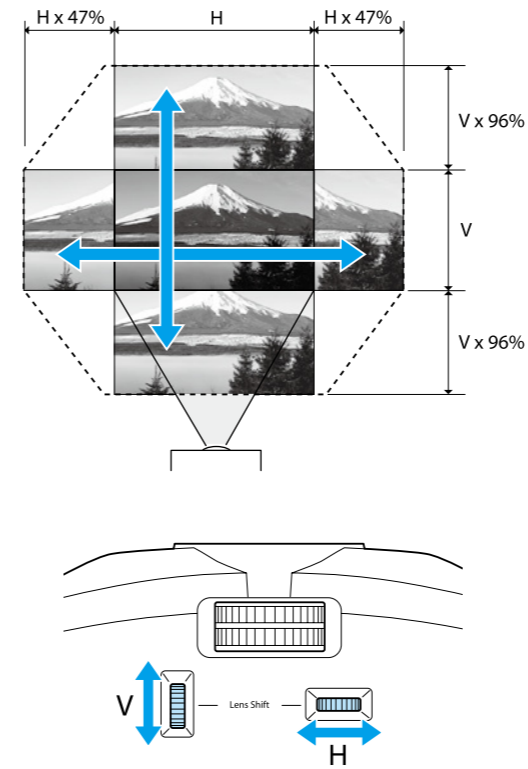


Turning On/Off

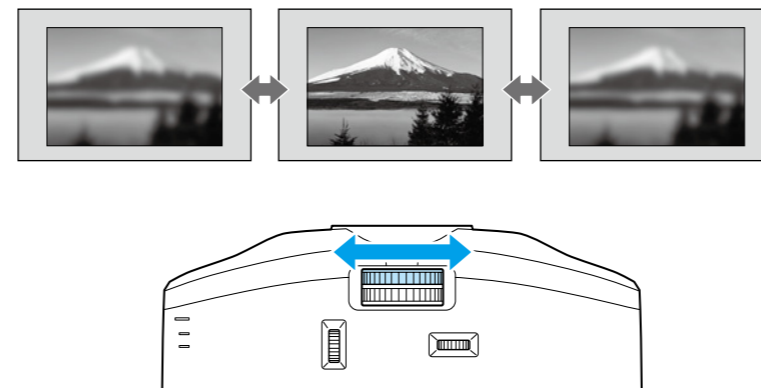


Adjusting

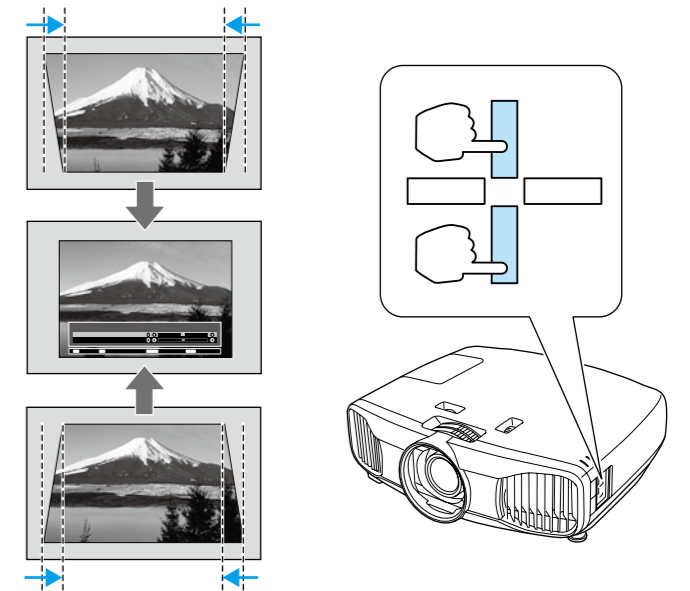
Shifting the Lens



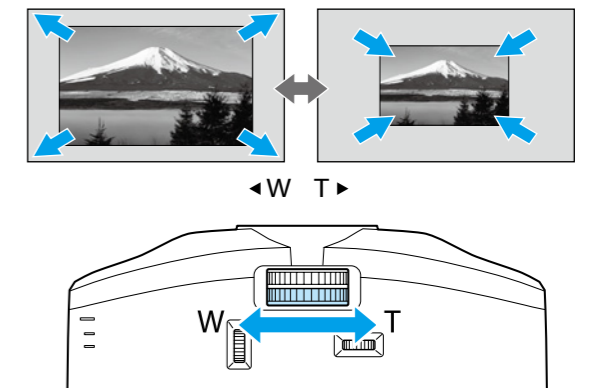
Focusing



Adjusting Vertical Keystone



Zooming



For More Information

