

API link function; How to run it with Excel

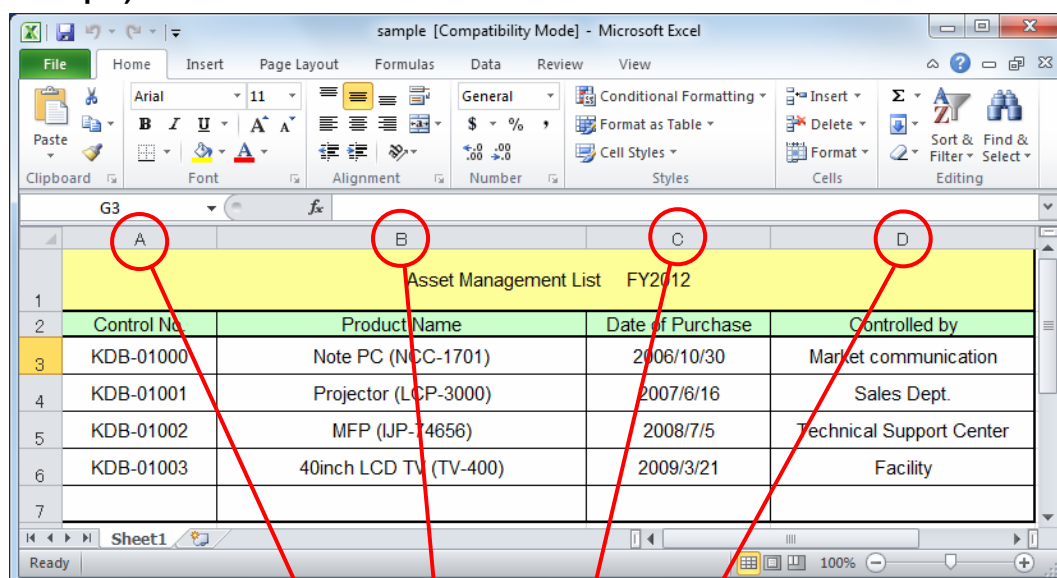
To run the API link function with another application such as Excel, creating a layout file and VBA programming are required.

1. Determine contents of labels to be printed

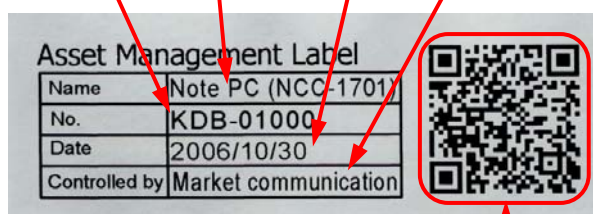
Examine your data file and determine what type of labels you want to print. If the data file is an Excel file, decide which cell to print in which portion on a label.

You can also let VBA program to process data in each cell (calculation, text string replacement, etc.) and print only the results.


Example)



Asset Management List FY2012			
Control No.	Product Name	Date of Purchase	Controlled by
KDB-01000	Note PC (NCC-1701)	2006/10/30	Market communication
KDB-01001	Projector (LCP-3000)	2007/6/16	Sales Dept.
KDB-01002	MFP (JP-14656)	2008/7/5	Technical Support Center
KDB-01003	40inch LCD TV (TV-400)	2009/3/21	Facility



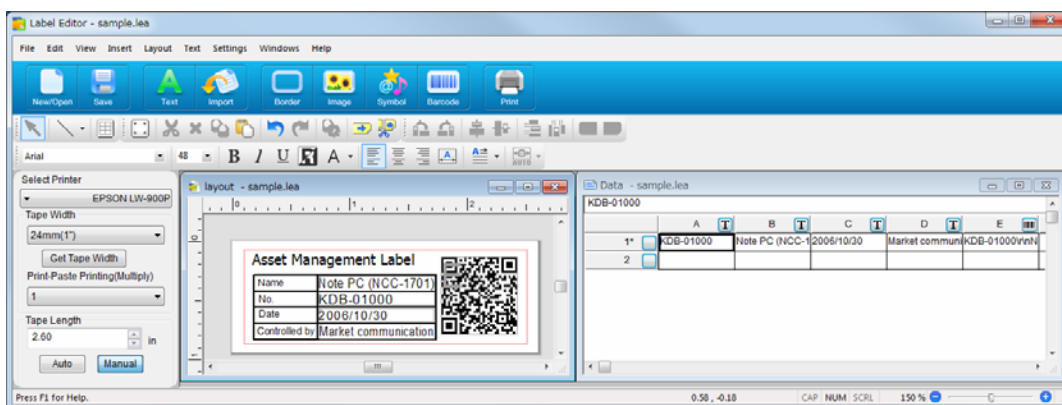
Name	Note PC (NCC-1701)
No.	KDB-01000
Date	2006/10/30
Controlled by	Market communication



The QR CODE is made by merging data in
A to D columns (merged by VBA program)

2. Create the layout file (template file, file extension is “lea”)

According to the decisions you made in step 1, design your layout label on the layout editing window of Label Editor (On the “New/Open” screen, select [Import (Horizontal Text)], then select [New Import Data] on the “Import” dialog.).



Specify where to print data in each column (A, B, C, D.. columns) on the label and determine the label design such as heading and frame border.

The data in each column is output to a CSV file in the alphabetical order being separated with comma, keep that in mind when you programming to create and manipulate the CSV file.

The character data input in the layout file is not printed when using the API link function. You can input dummy characters to determine the label design and do not need to delete the dummies.

In the above example, the E column is provided to import QR CODE. The fifth text string in the CSV file corresponds to the E column, so the QR CODE is generated using the fifth text string.

3. Create a VBA program

The followings are the main processes that can be designated by Excel VBA program.

(1) Define VBA program start condition

Define how to start printing. For example, "Press F12 key", "Click on a button on the screen" and so on. Define your desired print start method.

(2) Create a CSV file

Generate a print data file in CSV format so that its data arrangement matches with the A, B, C, D... columns of the layout file created in step 2. Note that the path of the CSV file generated in this step is required when running the program.

In this example, a CSV file with the column titles in the order of "Control No.", "Product Name", "Date of Purchase", "Controlled by", and also "Text string for generating QR CODE". Define the program according to the specifications you want to use for how to process the text strings in which cell.

(3) Running the API link function

Specify the layout file created in step 2 and the CSV file created in the above step, start Label Editor. If any one of the specified path names is wrong, Label Editor cannot operate normally.

For more details or information on description format, see the User's Guide or sample programs.

All features and specifications described are subject to change without notice.

Microsoft, Windows, Windows Vista and the Windows logos are trademarks of the Microsoft group of companies in the United States and other countries.

Other companies or product names used herein are also trademarks or registered trademarks of their respective owners.