

**Support Bulletin**

**Product:** Epson Stylus Pro 3800 / 3880 / 4000 / 4800 / 4880 / 4900 / 7600 / 7800 / 7880 / 7890 / 7900 / 9600 / 9800 / 9880 / 9890 / 9900 / 11880  
Epson Stylus Photo R2000 - R2400 – R2880 - R3000

**Subject:** **ICC profiles for Traditional Photo Paper**

EN	At present, this document is only available in English.
DE	Dieses Dokument ist gegenwärtig nur in Englisch verfügbar.
FR	A ce jour, ce document n'est disponible qu'en anglais.
IT	Attualmente questo documento è disponibile solo in lingua inglese.
PO	Atualmente este documento está unicamente disponível em inglês.
ES	Atualmente este documento sólo está disponible en inglés.
NL	Dit document is op dit moment alleen in Engels verkrijgbaar.

**1. File Information:**

<b>File Name:</b>	ICC Profiles for Traditional Photo Paper
<b>Version:</b>	10.0
<b>Modified Items :</b>	New ICC organization
<b>Supported OS:</b>	Windows 98 / ME / NT / 2000 / XP / Vista / Seven / Windows 8; MacOS 8 / 9 / 10.2 or later
<b>Supported Printers:</b>	Stylus Pro 3800 / 3880 / 4000 / 4800 / 4880 / 4900 / 7600 / 7800 / 7880 / 7890 / 7900 / 9600 / 9800 / 9880 / 9890 / 9900 / 11880 Stylus Photo R2000 / R2400 / R2880 / R3000

**2. Profiles Description:**

These RGB ICC profiles are intended to be used to print with Epson Traditional Photo Paper using EPSON Professional Inkjet printers and their standard printer drivers.

For details see Annex 1

**3. Installing ICC Profiles for Epson Traditional Photo Paper**

To install the ICC profiles on your computer, you need to place them into the correct Operating System profile folder. Please see the following table for the correct location of the profile folder for your operating system:

<b>Operating System</b>	<b>Location of ICC Profiles</b>
Windows 98 / ME	Windows / System / Color
Windows NT	Winnt / System32 / Color
Windows 2000	Winnt / System32 / Spool / Drivers / Color
Windows XP / Vista / Seven / Windows 8	Windows / System32 / Spool / Drivers / Color
MAC OS 8 / 9	System Folder / ColorSync Profiles
MAC OS 10.2 or later	Library / ColorSync / Profiles

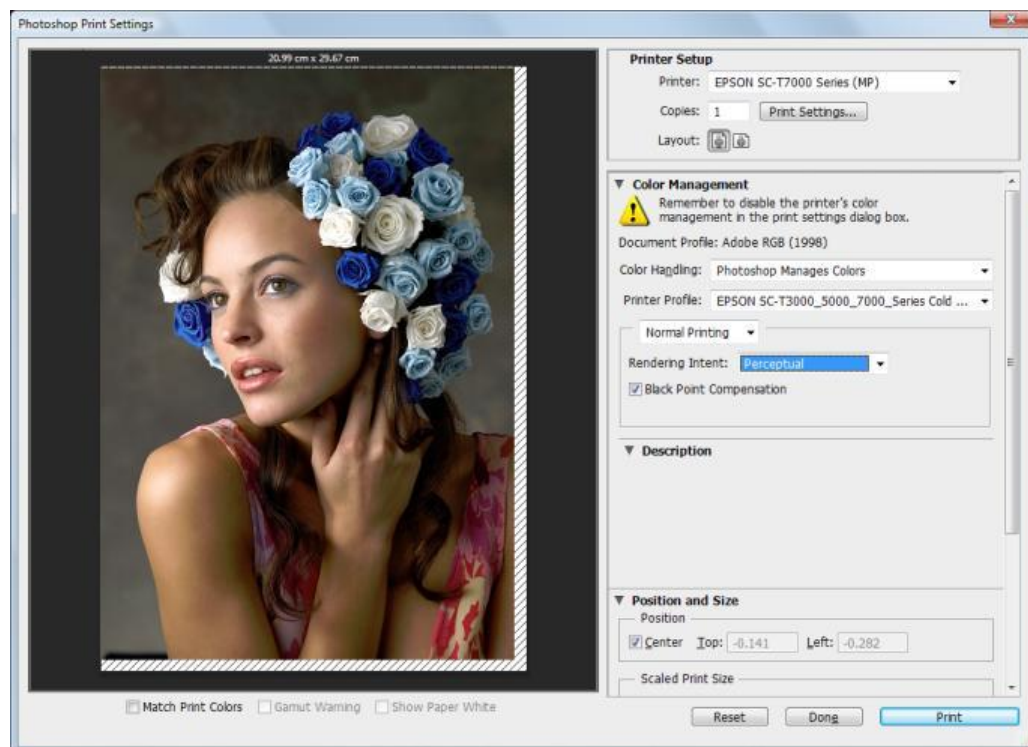
#### 4. How to print with ICC profiles using Adobe Photoshop for the color conversion

As example, this chapter shows the required Adobe Photoshop CS6 print dialog (for Previous version see Annex 2) and Epson driver settings.

Please note: The settings may slightly differ for different Adobe Photoshop versions and Epson printer models.

- 4.1 Start Adobe Photoshop and open the image that you want to print.
- 4.2 Open the menu "**File > Print with Preview**"
- 4.3 In the "**Print**" dialog select the **Color Management** menu.
- 4.4 Make sure that your image has an assigned "**Document**" (input) profile to ensure consistent color printing.
- 4.5 Select the color management "**Options**".
  - Choose "**Let Photoshop Determine Colors**" or "**Photoshop Manages Colors**" as "**Color Handling**"
  - Select "Your Printer" Traditional Photo Paper as "**Printer Profile**"
  - Set the "**Rendering Intent**" to "**Relative Colorimetric**" or "**Perceptual**"
  - Check the "**Black Point Compensation**" check box.

For Photoshop CS6:



Make sure that your image has an assigned "input" profile. If not, you need to select a profile from the "Edit → Assign Profile" menu in Adobe Photoshop's main menu view.

As Color Handling select **Photoshop Manages Colors** to allow Photoshop to perform the color conversion from the original image colour space to the printer media colour space.

As Printer Profile, select from the list the "Your Printer" Traditional Photo Paper profile of your printer model.

As Rendering Intent, select **Perceptual** or **Relative Colorimetric** according to your image type and colour gamut

Activate the **Black Point Compensation** to ensure that shadow details will be preserved.

4.6 Click on the **“Page Setup”** or **“Print settings”** button to open the Epson printer driver dialog.

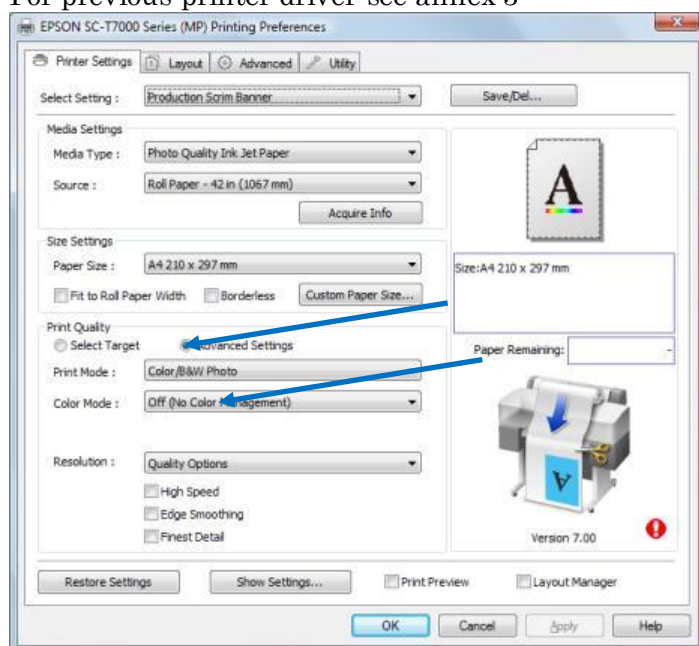
4.7 Import custom settings or make the following steps:

4.8 Go into the **“Advanced”** menu of the Epson printer driver dialog.

4.9 In the Advanced menu select:

- As **“Media Type”** the **Premium Glossy Photo Paper (250) ... following printers**
- The desired print quality settings (i.e. Print Quality Resolution, High Speed on or off and Finest Detail on or off) ... following Manual Printer Driver Settings Sheet:

For previous printer driver see annex 3



- Disable the **“Printer Color Management”** by setting it to **“Off (No Color Adjustment)”** -> **Advanced Settings**.

4.10 Finally press the **“Ok”** button to exit the Epson printer driver and click on the **“Print”** button of Adobe Photoshop to print your image.

## 5. How to print with ICC Profiles using the Epson printer driver for the color conversion

If your application is not supporting the ICC workflow or is allowing to send unconverted image data to your printer driver, you can print selecting the ICC profiles directly in the Epson printer driver.

Please note: Not all Epson printer models and operating systems allow the selection of custom ICC profiles. Therefore we recommend to check your printer's user guide if your printer and operating system support this feature.

5.1. In your application select the “**Print**” menu to open the Epson printer driver dialog.

5.2. Go into the “**Advanced**” menu of the Epson printer driver dialog.

5.3. In the Advanced menu select:

- As “**Media Type**” the **Premium Glossy Photo Paper (250) ... following your printer**
- The desired print quality settings (i.e. Print Quality Resolution, High Speed on or off and Finest Detail on or off) following Manual Printer Driver Settings Sheet.
- Choose “**ICM**” as “Printer Color Management”.

5.4. In the “**Driver ICM**” mode select:

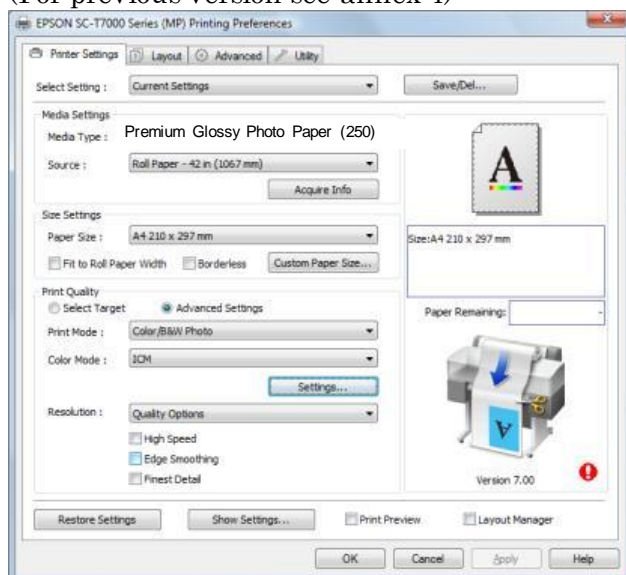
The same “**Input Profile**” color space as your image has.

Set the “**Rendering Intent**” to “**Relative Colorimetric**” or “**Perceptual**”.

Activate the check box “**Show all profiles**”

Select as “**Printer Profile**” “Your Printer” Traditional Photo Paper

(For previous version see annex 4)



Select **ICM** as Printer Color Management mode.

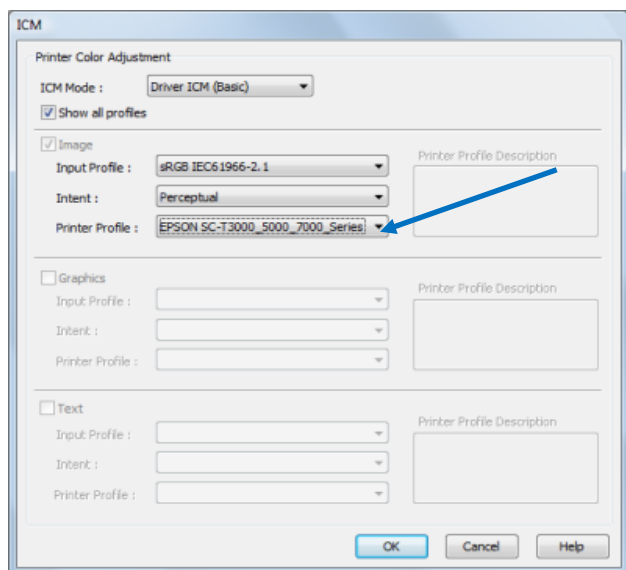
The first thing to do is to enable the **Show all profiles** option that will allow you to see and select all the ICC profiles installed on your computer.

As ICM Mode, select the **Basic** mode.

As Input Profile, select your document profile or define a profile by choosing it from the list. **Adobe RGB (1998)** or **sRGB** profiles are both suited for colour images printing. (Not ICC workflow supporting applications will mainly use the sRGB colour space)

As Intent, choose **Perceptual** or **Relative Colorimetric** according to your document type and color gamut

As Printer Profile, select from the list the “Your Printer” Traditional Photo Paper profile of your printer model.

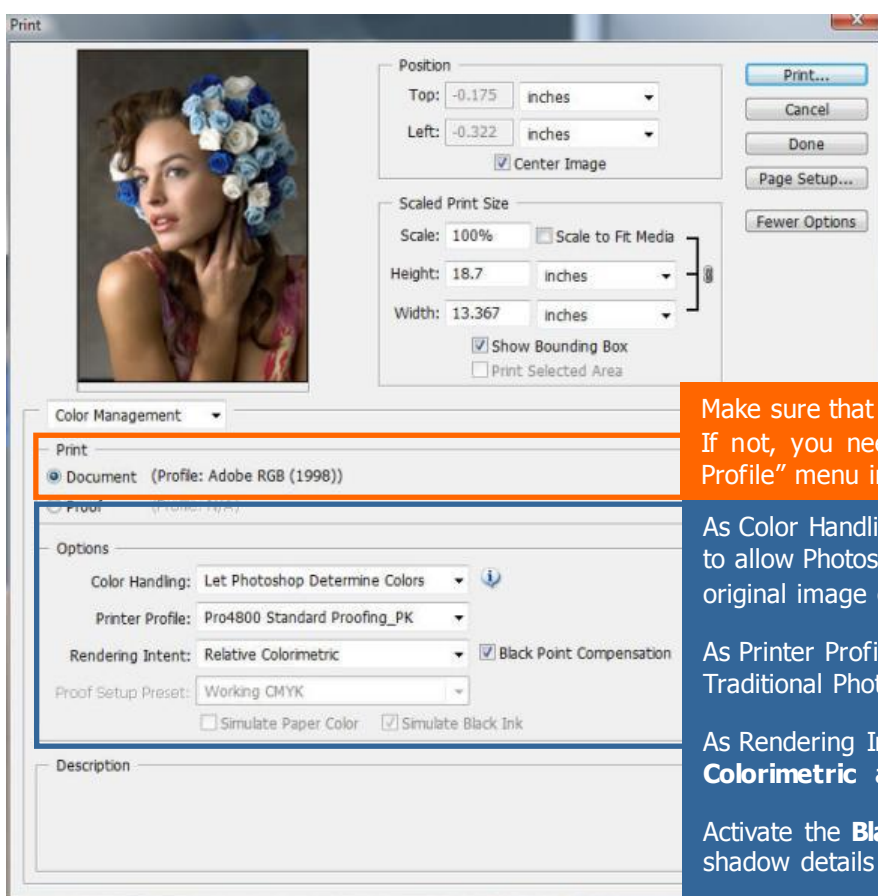


5.5. Finally press the “**OK**” button to exit the Epson printer driver and click on the “**Print**” button of your application to print your image.

## Annex 1 - Profile description

Profile Name	Printer Model	Black Ink Type	EPSON Driver Media Type
SPR2000 Traditional Photo Paper.icc	Stylus Photo R2000	Photo Black	Epson Premium Glossy
SPR2400 Traditional Photo Paper_PK	Stylus Photo R2400	Photo Black	Premium Glossy Photo Paper
SPR2880 Traditional Photo Paper_PK	Stylus Photo R2880	Photo Black	Premium Glossy Photo Paper
SPR3000 Traditional Photo Paper.icc	Stylus Photo R3000	Photo Black	Epson Premium Glossy
Pro3800 Traditional Photo Paper_PK	Stylus Pro 3800	Photo Black	Premium Glossy Photo Paper
Epson Stylus Pro 3880_3885_3890 Traditional Photo Paper_PK_LC.icm	Stylus Pro 3880	Photo Black	Premium Glossy Photo Paper
Pro4000-C8 Traditional Photo Paper_PK	Stylus Pro 4000-C8	Photo Black	Premium Glossy Photo Paper (250)
Pro4800 Traditional Photo Paper_PK	Stylus Pro 4800	Photo Black	Premium Glossy Photo Paper (250)
Pro4880 Traditional Photo Paper_PK	Stylus Pro 4880	Photo Black	Premium Glossy Photo Paper (250)
Epson Stylus Pro 4900_4910 Traditional Photo Paper_PK.icc	Stylus Pro 4900	Photo Black	Premium Glossy Photo Paper (250)
Pro9600 7600 Traditional Photo Paper_PK	Stylus Pro 7600 / 9600	Photo Black	Premium Glossy Photo Paper (250)
Pro9800 7800 Traditional Photo Paper_PK	Stylus Pro 7800 / 9800	Photo Black	Premium Glossy Photo Paper (250)
Pro9880 7880 Traditional Photo Paper_PK	Stylus Pro 7880 / 9880	Photo Black	Premium Glossy Photo Paper (250)
Epson Stylus Pro 9890_9908_7890_7908 Traditional Photo Paper_PK.icc	Stylus Pro 7890 / 9890	Photo Black	Premium Glossy Photo Paper (250)
Epson Stylus Pro 9900_7900 Traditional Photo Paper_PK.icm	Stylus Pro 7900 / 9900	Photo Black	Premium Glossy Photo Paper (250)
Pro11800 Traditional Photo Paper_PK	Stylus Pro 11800	Photo Black	Premium Glossy Photo Paper (250)

## Annex 2 - How to print with ICC profiles using Adobe Photoshop for the color conversion for Photoshop CS2.



Make sure that your image has an assigned "input" profile. If not, you need to select a profile from the "Edit → Assign Profile" menu in Adobe Photoshop's main menu view.

As Color Handling select **Let Photoshop Determine Colors** to allow Photoshop to perform the color conversion from the original image colour space to the printer media colour space.

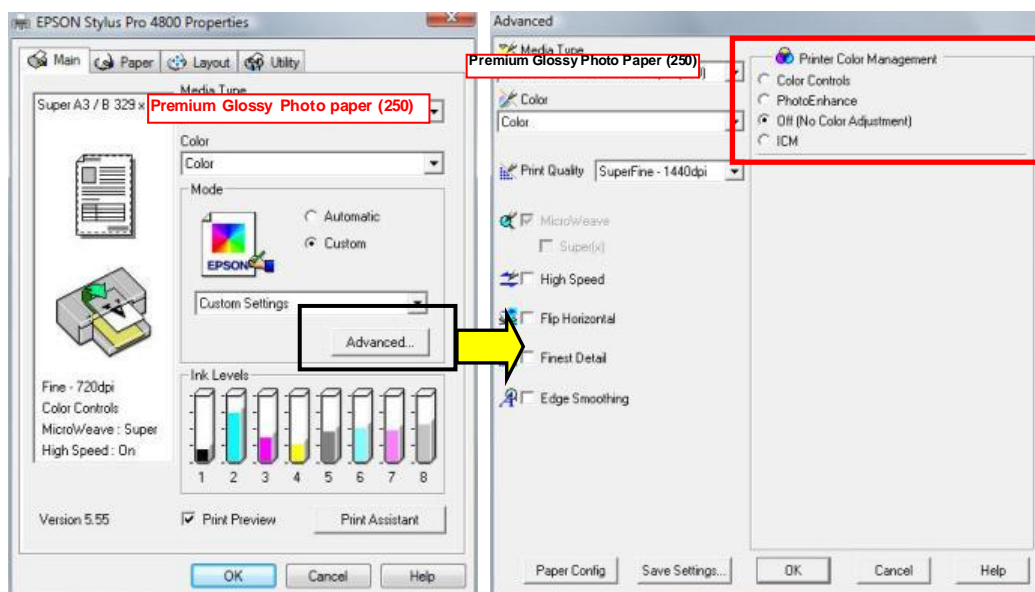
As Printer Profile, select from the list the "Your Printer" Traditional Photo Paper profile of your printer model.

As Rendering Intent, select **Perceptual** or **Relative Colorimetric** according to your image type and colour gamut

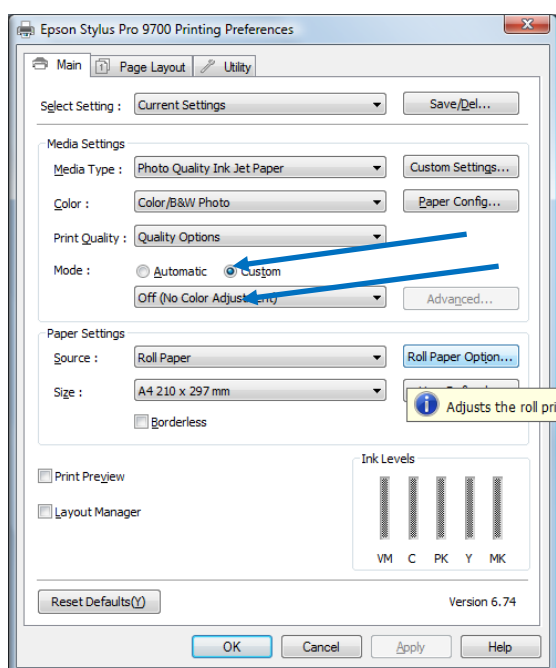
Activate the **Black Point Compensation** to ensure that shadow details will be preserved.



### Annex 3 - Go into the “Advanced” menu of the Epson printer driver dialog



When you print using the Color Handling **Let Photoshop Determine Colors**, it is very important to disable the printer color management by setting it to **Off (No Color Adjustment)**. Otherwise you will apply a double colour conversion process (one by Photoshop + one by the printer driver) that will generate inaccurate colour results.



- Disable the “**Printer Color Management**” by setting it to “**Off (No Color Adjustment)**” -> **Mode Custom**.

Annex 4 - In the “**Driver ICM**” mode select

