

See-Through Mobile Viewer
MOVERIO
BT-200
Start Guide



Before getting started, read the "Safety Instructions" in the **User's Guide** supplied with this product. The User's Guide provides detailed information on operating and viewing movies with the product. You can also download the **Reference Guide** (PDF or Help application) from the following website: <http://www.epson.com>.

Package Contents



Viewing Movies

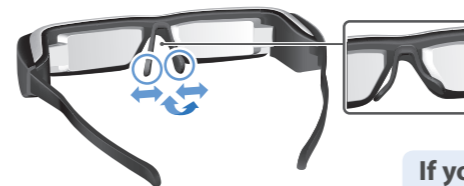
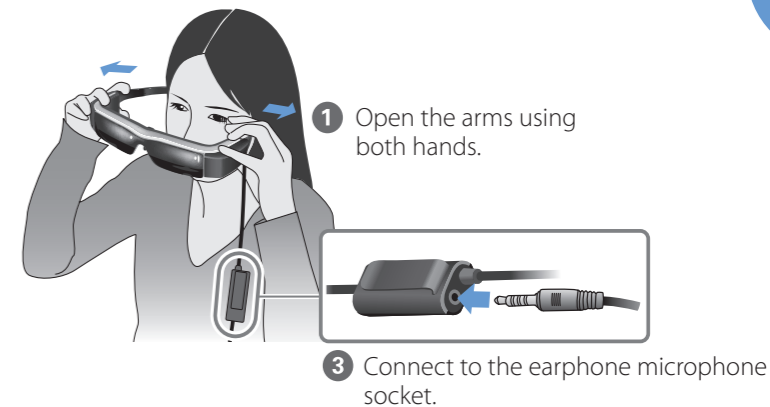
1. Charging
 2. Wearing the Headset
 3. Turning On
- Viewing Movies Copied from a Computer
- Viewing Movies on a Website



Copyright©2014 Seiko Epson Corporation. All rights reserved.
Printed in Philippines XX.XX.-XX(XXX)
2014.3

Wearing the Headset

- 1 Place the headset on your head.
- 2 Make sure the lenses are at eye level.
- 3 Connect the earphone microphones.



- 2 Adjust the width and position of the nose pads.

If you wear glasses

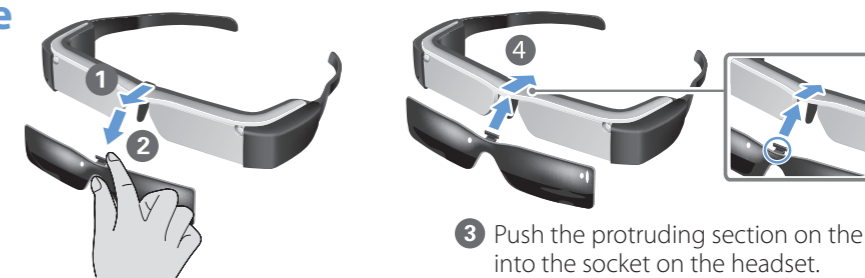
You can wear the headset over your glasses, or you can use the lens holder supplied with the product.

If the headset is too loose

Attach the supplied ear hooks if the headset does not feel secure. See the User's Guide for more details.

Replacing the Shade

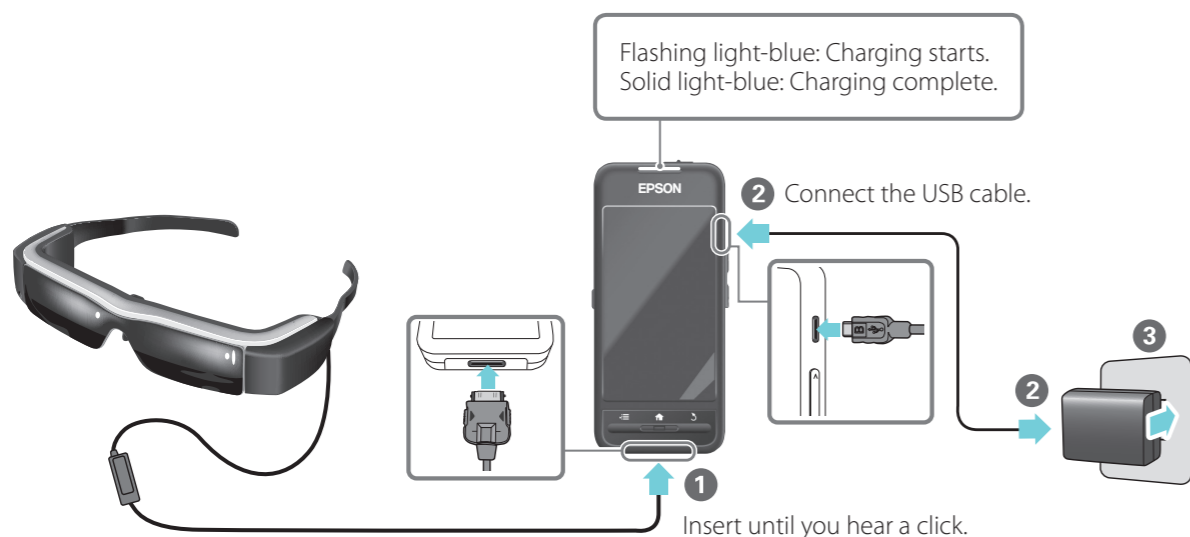
- 1 Pull forward.
- 2 Pull down.
- 3 Align the protruding section with the socket.
- 4 Push into the headset.



Charging

- 1 Connect the headset and the controller.
- 2 Connect the controller and the AC adapter.
- 3 Plug in the AC adapter.

* Initial charging takes approximately 5 hours.



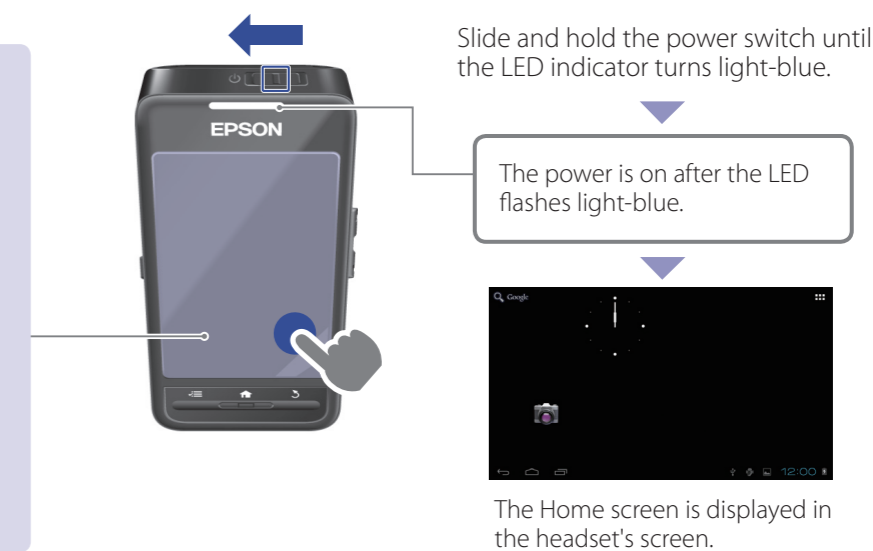
Turning On

Turn on the controller.

Trackpad

When you touch the trackpad with your finger, a pointer [] is displayed on the screen.

- Tap**
Touch lightly
To launch applications and select items.
- Drag**
Hold down and move
To move icons and scroll screens.



Turning off

Slide and hold the power switch to the [] side for at least one second. When the [Power off] screen is displayed, move [] to [OK], and then tap.

Turning off the screen while the product is on (Sleep mode)

Slide the power switch briefly to the [] side to enter Sleep mode. Slide the power switch to the [] side again to release Sleep mode.

Viewing Movies Copied from a Computer

Copying data to this product



Windows

Windows XP and later versions of Windows are supported. You need Windows Media Player 10 or later when using Windows XP.

OS X

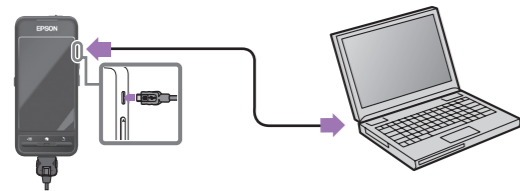
Install Android File Transfer from Android official site to your computer.



Supported file format with Gallery

- Movies: MP4 (MPEG4+AAC/Dolby Digital Plus), MPEG2 (H.264+AAC/Dolby Digital Plus)
- Still images: JPEG, PNG, BMP, GIF

- 1 Connect the USB cable to the controller and to your computer.

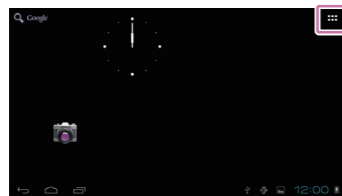


The computer recognizes this product as a portable device.

- 2 Open the portable device, and then copy data you want to view to the internal storage or microSD card. Disconnect the USB cable after you are finished copying data.

Viewing the copied data in the Gallery

- 1 Tap [] on the Home screen.



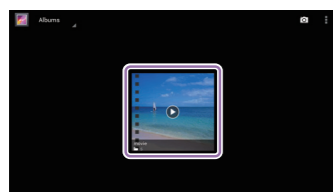
The APPS list screen is displayed.

- 2 Tap [] on the APPS list screen.



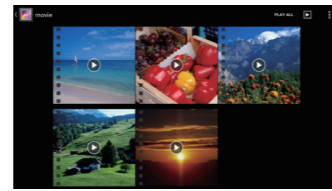
A folder is displayed.

- 3 Tap the folder containing the movie you want to view.

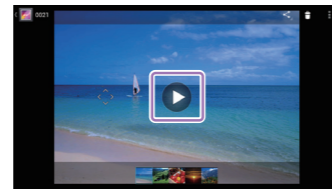


Supported files are displayed.

- 4 Tap the data you want to view.

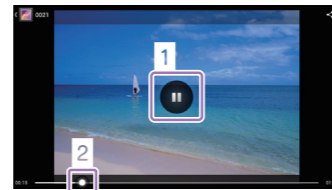


The playback screen is displayed.



Tap [] to display the application selection screen. Tap [Video player] to start playback.

Operations while playing movies



- 1 Pause

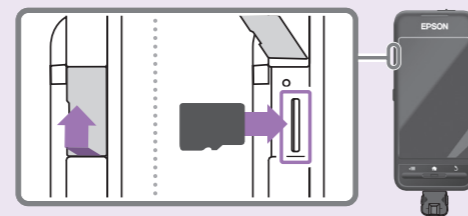
The pause button is displayed when you tap the screen. Tap [] to pause playback.

- 2 Movie positioning

Drag [] to the right or left to change the position where you want to start playing.

When using a commercially available microSD card

Insert the card in the microSD card slot on the controller, and then copy the data.



Supported memory cards

- microSD cards (up to 2 GB)
- microSDHC cards (up to 32 GB)

* A microSD card is not supplied with this product.

Removing a microSD card

- 1 Tap [] on the APPS list screen, and then tap [Storage] - [Unmount SD card] - [OK] to safely remove the card.

- 2 Open the cover, press the microSD card once in the direction shown by the arrow, and then remove the card.



Windows, Windows Vista, and Windows Media are the registered trademarks of the Microsoft Corporation in North America and other countries.

OS X is a registered trademark of Apple Inc.

Viewing Movies on a Website

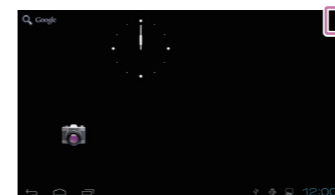
Making network settings

Make Wi-Fi settings to access the Internet in a wireless LAN environment.

Check the following before making settings

- The SSID (network name) for the wireless LAN access point or public wireless LAN service you want to connect to.
- Password to the network and security type, if security is enabled.

- 1 Tap [] on the Home screen.



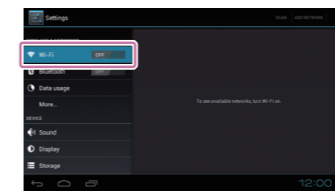
The APPS list screen is displayed.

- 2 Tap [] on the APPS list screen.



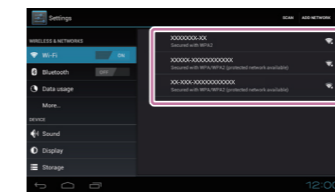
The Settings screen is displayed.

- 3 Tap [WIRELESS & NETWORKS] - [Wi-Fi] - [OFF] to turn the Wi-Fi [ON].

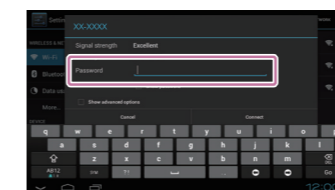


Available SSIDs (network names) are displayed.

- 4 Tap the SSID (network name) you want to connect to.



- 5 Enter the password, and then tap [Connect].

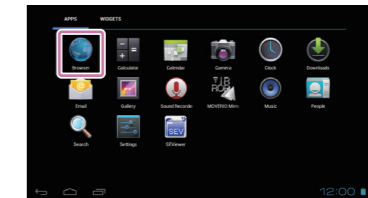


When [] is displayed on the status bar, settings are complete.

Using a Browser

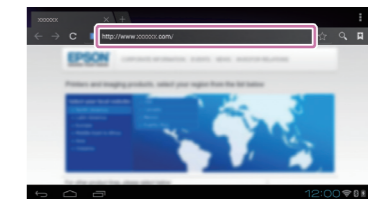
Connect to the Internet and view movies on a Website.

- 1 Tap [] on the APPS list screen.



The Browser screen is displayed.

- 2 Tap the URL field, and then enter a search keyword or URL.



Entering text

When you tap a field that allows text to be entered, a software keyboard is displayed. Tap the keyboard to enter text.

Changing the character type

Tap the [AB12] key on the keyboard to change the character type of the keyboard.

