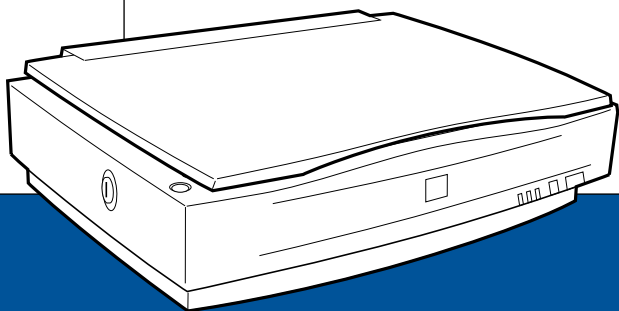


EPSON

Color Image Scanner



EPSON GT-10000+

Setup Guide

4012420-00
S01

Where to Find Information

Setup Guide (this document)

Describes how to set up and use the scanner. Basic scanning operations are covered. It also explains how to install and configure the EPSON scanner software and options, and describes how to make basic software settings and use the Start Button function.

EPSON Scan Server & EPSON TWAIN Pro Network User's Guide

Provides detailed instructions for installing and using EPSON Scan Server and EPSON TWAIN Pro Network software.

Online Reference Guide

Provides tips for optimizing scanning and detailed information on the settings and functions of EPSON TWAIN Pro and EPSON TWAIN Pro network. It also provides maintenance and troubleshooting tips, technical specifications, and customer support information.

Online Color Guide (may not be available in some countries)

Explains the basics of color imaging and how to get impressive results from your scanner and other EPSON products.

Information on EPSON TWAIN Pro and EPSON TWAIN Pro Network (online help)

Provides you with detailed information on EPSON TWAIN Pro and EPSON TWAIN Pro Network. To display the online help, click the Help button in the dialog box of EPSON TWAIN Pro or EPSON TWAIN Pro Network.

Information on PageManager and other software

Refer to the respective documentation provided on the EPSON Scanner Software CD-ROM or the other software CD-ROM.

EPSON® GT-10000+

Color Image Scanner

All rights reserved. No part of this publication may be reproduced, stored in a retrieval system, or transmitted in any form or by any means, electronic, mechanical, photocopying, recording, or otherwise, without the prior written permission of SEIKO EPSON CORPORATION. No patent liability is assumed with respect to the use of the information contained herein. Neither is any liability assumed for damages resulting from the use of the information contained herein.

Neither SEIKO EPSON CORPORATION nor its affiliates shall be liable to the purchaser of this product or third parties for damages, losses, costs, or expenses incurred by purchaser or third parties as a result of: accident, misuse, or abuse of this product or unauthorized modifications, repairs, or alterations to this product.

SEIKO EPSON CORPORATION and its affiliates shall not be liable against any damages or problems arising from the use of any options or any consumable products other than those designated as Original EPSON Products or EPSON Approved Products by SEIKO EPSON CORPORATION.

EPSON is a registered trademark of SEIKO EPSON CORPORATION.

IBM and PS/2 are registered trademarks of International Business Machines Corporation.

Apple, Macintosh, Mac, iMac, and Power Macintosh are registered trademarks of Apple Computer, Inc.

Microsoft and Windows are registered trademarks of Microsoft Corporation in the United States of America and other countries.

Presto! is a trademark of NewSoft Technology Corporation.

***General Notice:** Other product names used herein are for identification purposes only and may be trademarks of their respective companies.*

Copyright © 2001 by SEIKO EPSON CORPORATION, Nagano, Japan.



Printed on Recycled Paper.

Setup Guide

Contents

Safety Instructions

Important Safety Instructions	1
Warnings, Cautions, and Notes.	2
For United Kingdom Users	3
Safety information	3

Chapter 1 Getting to Know Your Scanner

Features	1-2
Unpacking the Scanner.	1-4
Attaching the Document Guide Strip	1-5
Scanner Parts	1-6
Lights and Buttons	1-7
Options	1-9

Chapter 2 Setting up the Scanner

Choosing a Place for the Scanner	2-2
Releasing the Transportation Lock	2-4
Plugging in the Scanner	2-5
Initialization	2-6
Connecting the Scanner to Your PC using the SCSI	
Interface	2-7
Understanding SCSI connections.	2-8
Setting the SCSI ID number	2-9
Setting the terminator switch	2-10
Connecting the scanner	2-11
Power-on sequence.	2-13
Power-off sequence	2-14

Chapter 3 Installing the Software

System Requirements	3-2
Installing the Scanner Software	3-3
For Windows Millennium Edition users	3-3
For Windows 2000 users	3-6
For Windows 98 users	3-9
Installing other scanner software for	
Windows Millennium Edition, 98, and 2000	3-13
For Windows 95 and NT 4.0 users	3-14
Selecting Scanners	3-19
For Windows Millennium Edition, 98, and 2000 users . . .	3-20
For Windows 95 and NT 4.0 users	3-22

Chapter 4 Using Your Scanner

Scanning Procedure	4-2
Placing a Document on the Scanner	4-2
Removing the Cover for Thick or Large Documents	4-5
Starting EPSON TWAIN Pro	4-7
Scanning Your Document	4-9
Making settings	4-9
Scanning and saving	4-14
Scanning by Pressing the Start Button	4-14

Chapter 5 Using the Start Button

Overview of Start Button Features	5-2
Making Windows Millennium Edition, 98, and 2000 Settings	5-3
Making PageManager Settings	5-5

Chapter 6 Options

Using the Automatic Document Feeder.	6-2
Unpacking the Automatic Document Feeder.	6-2
Installing the Automatic Document Feeder	6-3
Loading documents into your Automatic Document Feeder	6-7
Loading documents manually	6-8
Scanning from the Automatic Document Feeder	6-9
Changing orientation of scanned images	6-11
Fixing paper jams in the Automatic Document Feeder . . .	6-14
Document specifications	6-16
Using the IEEE 1394 Interface Board	6-17
Installing the IEEE 1394 interface board to your scanner.	6-18
Understanding IEEE 1394 connections	6-20
Connecting to your computer.	6-20
Installing the scanner software.	6-22

Glossary

Index

Safety Instructions

Important Safety Instructions

Read all these instructions and save them for later reference. Follow all warnings and instructions marked on the scanner.

- ❑ Unplug the scanner before cleaning. Clean with a damp cloth only. Do not spill liquid on the scanner.
- ❑ Do not place the scanner on an unstable surface, or near a radiator or heat source.
- ❑ Use only the type of power source indicated on the scanner's label.
- ❑ Connect all equipment to properly grounded wall outlets. Avoid using outlets on the same circuit as photocopiers or air control systems that regularly switch on and off.
- ❑ Do not let the power cord become damaged or frayed.
- ❑ If you use an extension cord with the scanner, make sure the total ampere rating of the devices plugged into the extension cord does not exceed the cord's ampere rating. Also, make sure the total ampere rating of all devices plugged into the wall outlet does not exceed the wall outlet's ampere rating.
- ❑ Except as specifically explained in this *Setup Guide* and the *Online Reference Guide*, do not attempt to service the scanner yourself.

- ❑ Unplug the scanner and refer servicing to qualified service personnel under the following conditions:

If the power cord or plug is damaged; if liquid has entered the scanner; if the scanner has been dropped or the case damaged; if the scanner does not operate normally or exhibits a distinct change in performance. (Do not adjust controls that are not covered by the operating instructions.)

- ❑ If you plan to use the scanner in Germany, observe the following:

To provide adequate short-circuit protection and over-current protection for this scanner, the building installation must be protected by a 10 or 16 Amp circuit breaker.

Note for German-speaking users:

Bei Anschluss des Scanner an die Stromversorgung muss sichergestellt werden, dass die Gebäudeinstallation mit einer 10 A- oder 16 A-Sicherung abgesichert ist.

Warnings, Cautions, and Notes



Warnings must be followed carefully to avoid bodily injury.



Cautions must be observed to avoid damage to your equipment.

Notes contain important information and useful tips on the operation of your scanner.

ENERGY STAR® Compliance

As an ENERGY STAR Partner, EPSON has determined that this product meets the ENERGY STAR guidelines for energy efficiency.



The International ENERGY STAR Office Equipment Program is a voluntary partnership with the computer and office equipment industry to promote the introduction of energy-efficient personal computers, monitors, printers, fax machines, copiers, and scanners, in an effort to reduce air pollution caused by power generation.

For United Kingdom Users

Safety information



Warning:

This appliance must be earthed. Refer to the rating plate for voltage and check that the appliance voltage corresponds to the supply voltage.

Important:

The wires in the mains lead fitted to this appliance are colored in accordance with the following code:

Green and yellow — Earth

Blue — Neutral

Brown — Live

As the colors of the wires in the mains lead of this appliance may not correspond with the colored markings identifying the terminals in your plug, proceed as follows:

The green and yellow wire must be connected to the terminal in the plug which is marked with the letter E or with the earth symbol (\perp).

The blue wire must be connected to the terminal in the plug marked with the letter N.

The brown wire must be connected to the terminal in the plug marked with the letter L.

If damage occurs to the plug, replace the cord set or consult a qualified electrician.

Replace fuses only with a fuse of the correct size and rating.

Getting to Know Your Scanner

Features 1-2

Unpacking the Scanner 1-4

Attaching the Document Guide Strip 1-5

Scanner Parts 1-6


Lights and Buttons 1-7


Options 1-9

Features

The EPSON GT-10000+ scanner offers the following features:

- ❑ Maximum optical resolution of 600 dots per inch (dpi) for main scanning, and 2400 dpi with micro step for sub scanning.
- ❑ A3/US B (Ledger) size scanning area.
- ❑ Start Button control for shortcut local and networked scanning operation.

In the stand-alone configuration, pressing the  Start button on the scanner can automatically start a scanning sequence by invoking Page Manager and EPSON TWAIN Pro, scanning documents, launching a graphical application and importing the scanned image to the application.

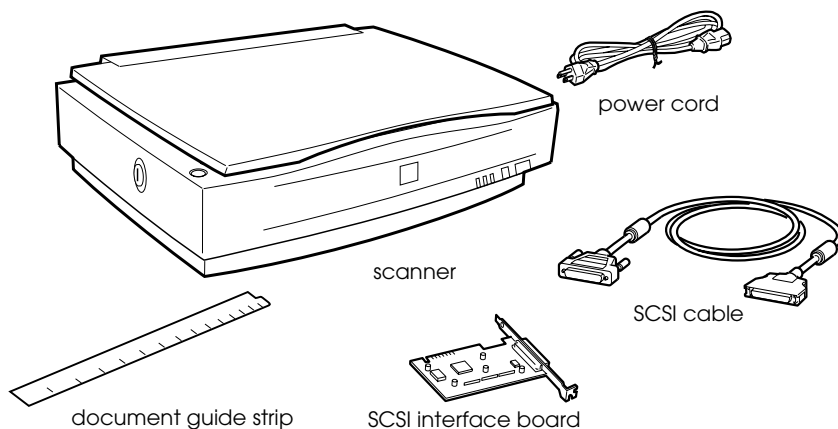
In the networked configuration, pressing the  Start button on the scanner starts the same operation as clicking the SCAN button in the EPSON TWAIN Pro Network dialog box.

- ❑ Full color or grayscale scanning (36-bit input, 24-bit output).
- ❑ EPSON TWAIN Pro lets you take full advantage of your scanner's advanced features.
- ❑ EPSON TWAIN Pro Network and EPSON Scan Server software work together to directly control all of the features of your EPSON scanner in a networked environment.
- ❑ The Unsharp Mask option of EPSON TWAIN Pro and EPSON TWAIN Pro Network automatically sharpens the image to provide crisp detail.
- ❑ The De-screening option of EPSON TWAIN Pro and EPSON TWAIN Pro Network automatically removes unwanted moiré patterns from scanned images for higher quality output.

- ❑ Auto Area Segmentation (AAS) allows you to separate text from photographs on a page so that grayscale images become clearer and text recognition more accurate.
- ❑ Text Enhancement Technology (TET) enhances text recognition accuracy for optical character recognition (OCR) scanning.
- ❑ The optional Automatic Document Feeder enables continuous sheet scanning. If multiple pages are loaded in the Automatic Document Feeder, the pages are fed from the top and ejected face down.
- ❑ The optional IEEE 1394 Interface Board allows you to connect your PC or scanner to other devices which support the IEEE 1394 standard.
- ❑ The optional EPSON Network Image Express enables a scanner to become sharable on a network without the need to have it connected to a scanner server PC.

Unpacking the Scanner

When you unpack your scanner, make sure the following parts are included and not damaged. If you find any missing or damaged items, contact your EPSON dealer immediately. (Your scanner also comes shipped with CD-ROMs (and/or floppy disks) which contain the driver software to run your scanner, along with other items necessary to use the scanner.)



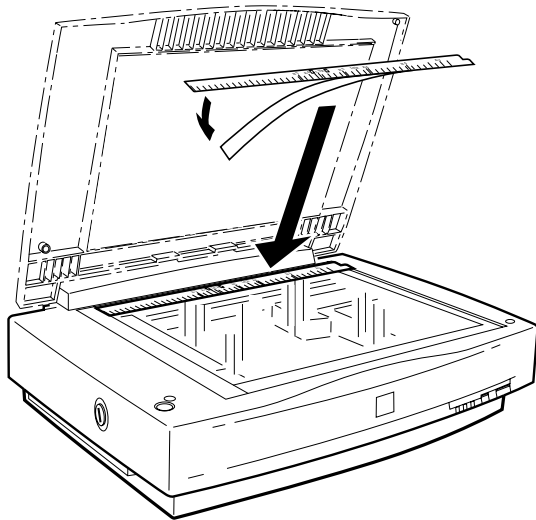
Depending on the country of purchase, the power cord may come attached to the scanner. The shape of the AC plug also varies, so make sure the plug included is the correct shape for the electrical outlet in your country.

If your computer is already equipped with SCSI board, you can use it for allowing the computer to communicate with the scanner. Otherwise, install the SCSI board which comes with the scanner in the computer. For setup of the SCSI board, refer to the manual which comes with it.

Attaching the Document Guide Strip

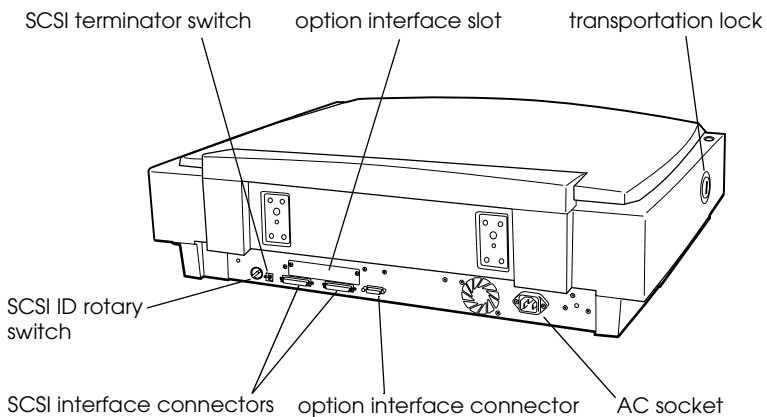
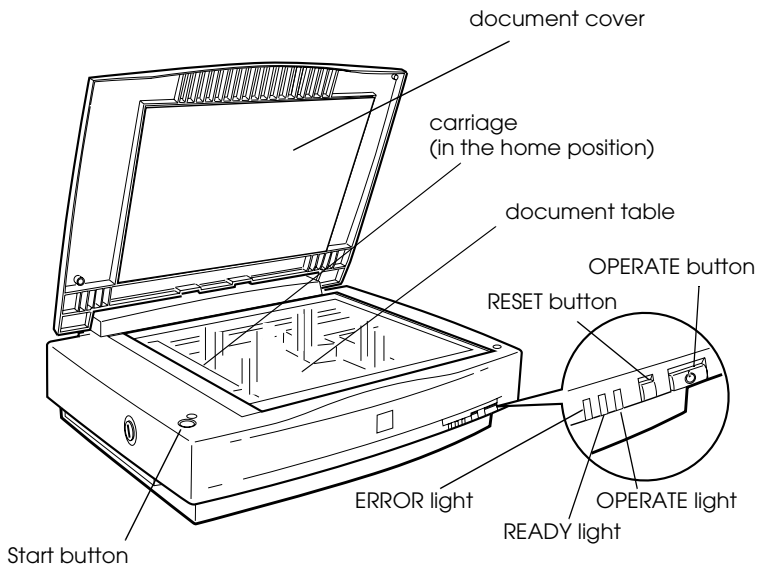
The document guide strip is used to align document's orientation when you place the document on the document table.

Peel off the backing from the document guide strip and place it on the horizontal ruler of the document table so that the notch in the right end matches the slot in the casing as shown.



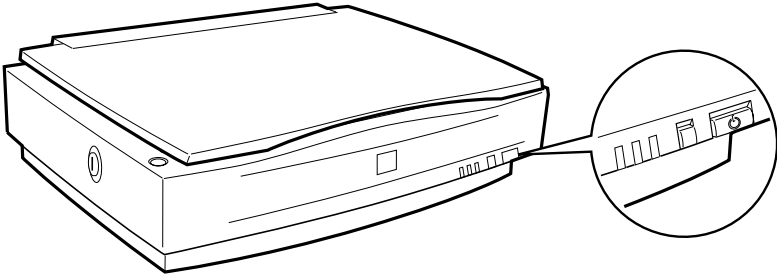
When you use the Automatic Document Feeder, remove the document guide strip from the document table.

Scanner Parts



Lights and Buttons


The scanner has three indicator lights and three buttons.



Lights

Light	Color	Indicator Status	Meaning
OPERATE	Green	On	Scanner is turned on.
READY	Green	On	Scanner is ready to scan.
		Flashing	Scanning operation is in progress.
ERROR	Red	On	This indicator also lights when an error occurs. See your Online Reference Guide.
		Flashing	

Buttons

Button	Function
OPERATE	Turns the scanner on and off.
RESET	Resets the scanner to its default settings after an error. Pressing this button while scanning is in progress stops the scanner and may cause an error in the scanning software.
 start	<p>The hardware switch to execute scanning and transfer the scanned image to assigned application software in a stand-alone configuration. To use this feature, you need to setup software. See Chapter 5, "Using the Start Button," for more details.</p> <p>In a networked environment it starts the same operation as the Scan button in EPSON TWAIN Pro Network.</p>

Options

The following options expand the capability of your scanner. For detailed information on their use, see Chapter 6 in this guide or documentation come with the option.

Automatic Document Feeder (B81321*)

Designed primarily for optical character recognition (OCR) scanning, the Automatic Document Feeder allows you to scan up to 100 pages automatically, and then cover them to text for use in word processing programs.

IEEE 1394 Interface Board (B80834*)

Allows you to connect your computer or scanner to other devices which support the IEEE 1394 standard.

EPSON Network Image Express (B80836*)

Enables an EPSON scanner supporting EPSON TWAIN Pro Network to become shareable on a network without the need for a scanner server PC, which allows you to use various scanning methods in a networked environment with less power and space.

Note:

The asterisk is a substitute for the last digit of the product number, which varies by country.

Setting up the Scanner

Choosing a Place for the Scanner2-2

Releasing the Transportation Lock.....2-4

Plugging in the Scanner2-5

Initialization2-6

Connecting the Scanner to Your PC using the SCSI

- Interface2-7
 - Understanding SCSI connections.....2-8
 - Setting the SCSI ID number2-9
 - Setting the terminator switch2-10
 - Connecting the scanner2-11
 - Power-on sequence.....2-13
 - Power-off sequence2-14

Choosing a Place for the Scanner

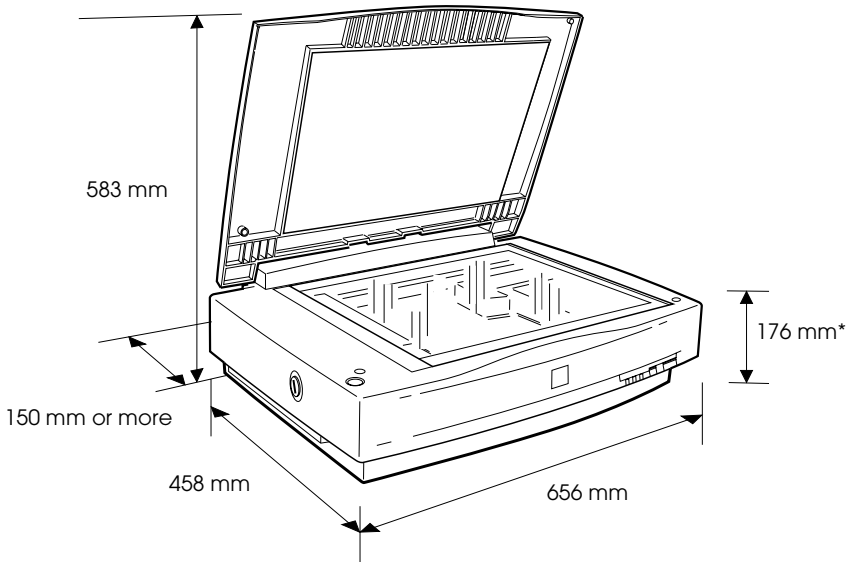
Follow the guidelines below when selecting a location for your scanner:

- ❑ Place the scanner on a flat, stable surface. The scanner will not operate properly if it is tilted at an angle.
- ❑ Place the scanner close enough to the computer for the interface cable to reach it easily.
- ❑ Place the scanner near a wall outlet where the power cord can be easily unplugged.

Note for French-speaking users:

Placez le scanner près d'une prise de courant où la fiche peut-être débranchée facilement.

- ❑ Allow space behind the scanner for the cables, and space above the scanner so that you can raise the document cover fully.



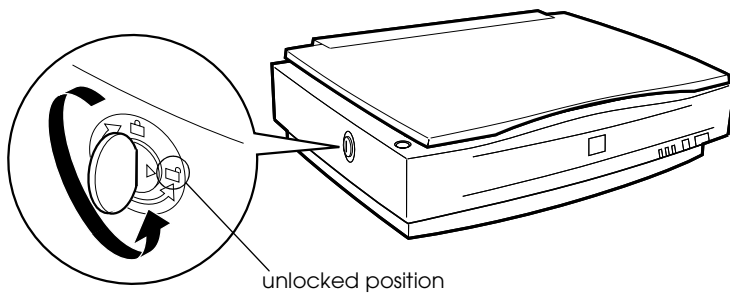
* When document cover is closed.

- ❑ Keep the scanner away from high temperatures, humidity and excessive dirt or dust. Also avoid using or storing the scanner in places subject to rapid changes of temperature and humidity.
- ❑ Keep the scanner away from direct sunlight and strong light sources.
- ❑ Avoid places subject to shocks and vibrations.

Releasing the Transportation Lock

Before connecting the scanner to a power source, you must release the transportation lock.

1. Place the scanner on a flat, stable surface with its left side facing you.
2. Turn the transportation lock to the unlocked position using a coin or smaller disc as shown below.

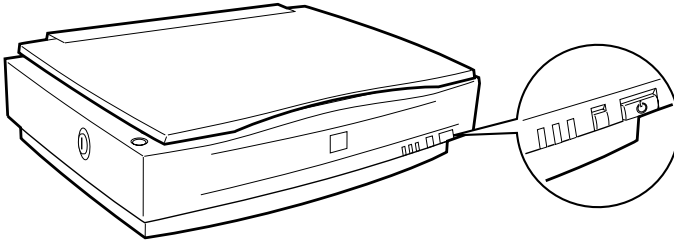


Note:

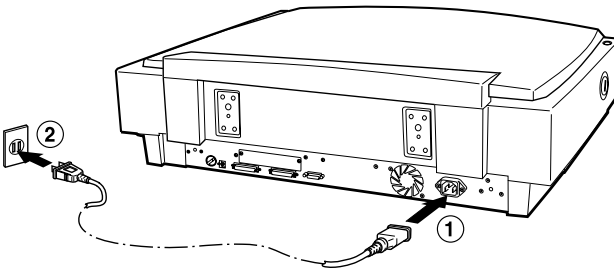
Before you transport the scanner or store it for an extended period of time, secure the carriage by turning the transportation lock back to the locked position.

Plugging in the Scanner

1. Make sure that the scanner is turned off. The scanner is off when the OPERATE button is raised (not depressed).



2. If the power cord is not attached to the scanner, connect it to the AC socket on the back of the scanner, and plug the other end into a properly grounded wall outlet.



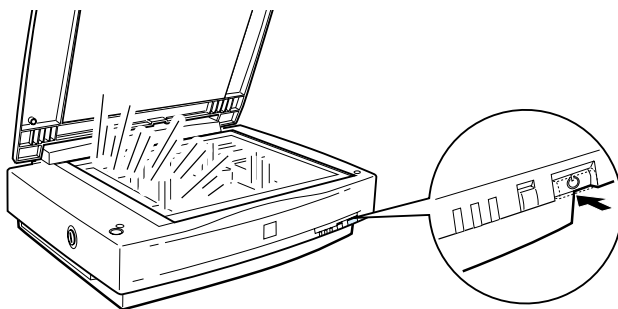
Caution:

It is not possible to change the scanner's voltage. If the label on the back of the scanner does not show the correct voltage for your country, contact your dealer. Do not plug in the power cord.

Initialization

Before connecting the scanner to your PC, follow the steps below to make sure that the scanner is operating properly.

1. Open the document cover so you can see the operation of the scanner during initialization.
2. Turn on the scanner by pressing the OPERATE button.



3. Make sure the carriage moves towards the right slightly and back to its original position, and the fluorescent lamp on the carriage flash.

The READY indicator light comes on, meaning the scanner has completed initialization.

4. Turn off the scanner.

If the scanner does not work as described, make sure the power cord is firmly plugged in and that you have released the transportation lock, then try again.



Caution:

Whenever you turn off the scanner, wait at least 10 seconds before turning it back on. Rapidly turning the scanner on and off can damage the scanner.

Connecting the Scanner to Your PC using the SCSI Interface

For instructions on connecting the scanner to your PC using the SCSI interface, read this section.

Unless your PC already has a SCSI board installed, you need to install one, along with SCSI driver software. Install the SCSI board according to the directions included with it.

If your PC has a SCSI board up and running, connect the scanner as described in the next section.

Note:

- ❑ *You will need to install the SCSI driver that is normally included with Windows 95, 98, Millennium Edition, NT (see your system documentation for instructions), or 2000, or the driver described in the SCSI board installation documentation.*

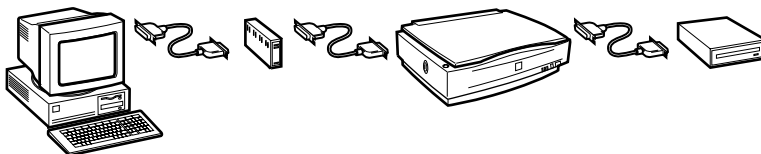
- ❑ *If you are having errors or poor performance, an updated driver may help. The latest driver may be available for download from the Web site of the SCSI board manufacturer.*

Understanding SCSI connections

Read the following sections to determine how to set up your SCSI devices and whether you need any optional SCSI cables.

Daisy Chain

The SCSI interface allows you to connect up to seven devices (such as a scanner, hard disk, CD-ROM, and so on) to the computer, in what is called a “daisy chain” arrangement. Only the first SCSI device in a daisy chain is connected to the computer; each of the other devices is connected to another SCSI device.



SCSI Cables

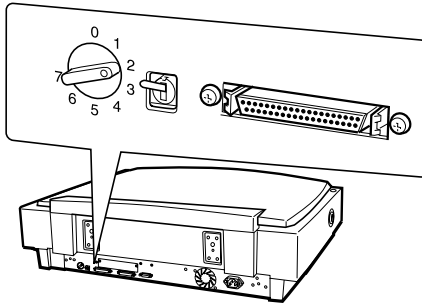
You may need to purchase SCSI cables before setting up your SCSI daisy chain. Be sure the SCSI cable connectors are suitable for your hardware, depending on the maker of your SCSI device and SCSI interface board.

SCSI ID and terminator

Each device has a SCSI ID number: the computer is usually set to number 7, and each of the other devices must have a different number between 0 and 6. Also, the first device and the last device in the chain (not including the computer) must have a terminator. No other device can have a terminator, or if a terminator does exist, it must be turned off or removed.

Setting the SCSI ID number

The scanner's default SCSI ID number is 2.



The SCSI ID rotary switch is located at the rear of the scanner.

2

If you add the scanner to a system in which one of your SCSI devices already has a SCSI ID of 2, change the ID number to an unused number using the rotary switch. See the table below as a guide.

ID	Availability	Description
0	Not recommended	Usually used for hard disk
1	Not recommended	Usually used for hard disk
2		Factory setting of the scanner
3		
4		
5		
6		
7	May not be available	Usually used for the SCSI board



Caution:

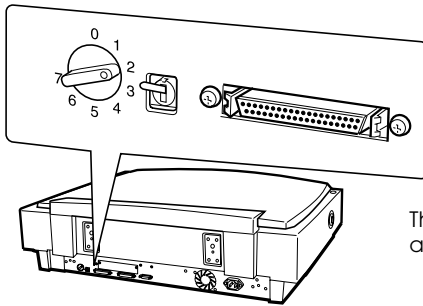
Do not set the SCSI ID to an ID number that is already assigned to another device; otherwise the computer, scanner, and other devices will not operate properly.

Setting the terminator switch

The scanner has a built-in terminator, which allows SCSI devices to communicate properly with each other. You may need to change the terminator switch setting according to your computer system.

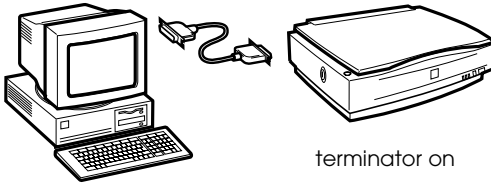
Note:

Do not use an external terminator.

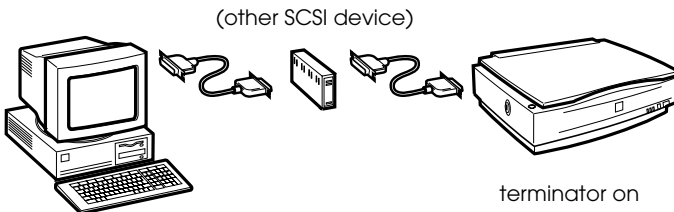


The terminator switch is located at the rear of the scanner.

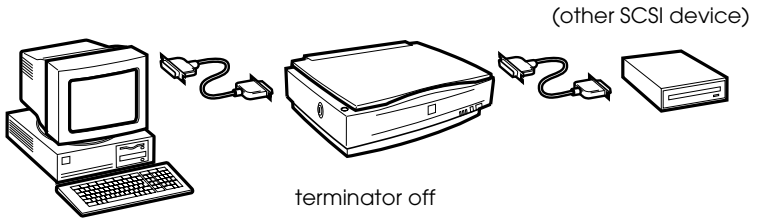
Only the scanner is connected



The scanner is the last device in the daisy chain



The scanner is in the middle of the daisy chain



Connecting the scanner

Connect the scanner to your PC or to another SCSI device as follows:

Note:

The combination of connectors on the SCSI interface cable you need varies depending on the maker of your SCSI device and SCSI interface board.

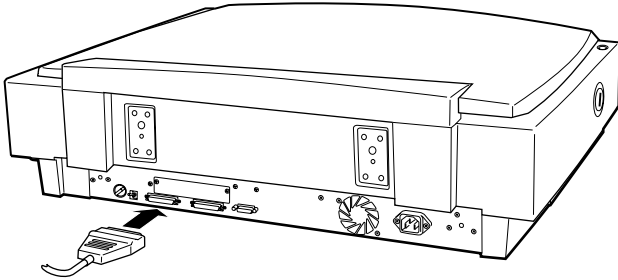
1. Make sure the scanner, computer, and all other SCSI devices are turned off and unplugged from the power source.



Caution:

Do not connect the scanner to the PC or other devices while they are turned on as damage may occur.

2. Connect one end of the interface cable to one of the scanner SCSI connectors until the locks on both sides snap in.



Note:

- To connect the scanner to a PC or any other SCSI devices, the total length of cable in the daisy chain must not exceed 3 meters; otherwise the system may not work properly.
 - Make sure no other interface is used.
3. Connect the other end of the cable to the SCSI port of your PC or another SCSI device.
 4. Plug in the power cords of your PC, scanner, and other external SCSI devices.

Note:

Before turning on your system, be sure to read "Power-on sequence" following.

Power-on sequence

Keep the following in mind every time you turn on your computer and SCSI devices, including the scanner.

- ❑ Be sure to turn on the SCSI device which is connected at the farthest end of the daisy chain first, then the second farthest and so on, until finally your computer. If you attempt to use a SCSI device which has been turned on after the computer, it may not work properly, or the computer may not work properly.
- ❑ **For Windows 95, 98, 2000, or Millennium Edition users:** The first time you turn on the computer after turning on the scanner, one of the following dialog boxes or similar may appear.

2



Windows 95



Windows 98



Windows 2000



Windows Millennium Edition

If you see one of these, follow the installation instructions in Chapter 3, then see “Power-off sequence” following.

Power-off sequence

Keep the following in mind every time you turn off your computer and SCSI devices.

- ❑ When you are finished using your system, turn off your computer first, then the scanner and other SCSI devices.
- ❑ While using your computer, do not turn off any SCSI device which has a terminator that is active (on).
- ❑ Do not turn the scanner off and back on while using your computer, otherwise the scanner may not work properly.

When the connection is complete, you need to install the scanner software. See Chapter 3 of this guide.

Installing the Software

System Requirements	3-2
Installing the Scanner Software.....	3-3
For Windows Millennium Edition users.....	3-3
For Windows 2000 users	3-6
For Windows 98 users	3-9
Installing other scanner software for	
Windows Millennium Edition, 98, and 2000	3-13
For Windows 95 and NT 4.0 users	3-14
Selecting Scanners	3-19
For Windows Millennium Edition, 98, and 2000 users. . . .	3-20
For Windows 95 and NT 4.0 users	3-22

System Requirements

Before installing the scanner software, make sure that your system meets the following requirements.

Scanner: EPSON GT-10000+

System: Microsoft® Windows® 95, Windows 98, Windows Millennium Edition, Windows NT® Workstation 4.0, or Windows 2000 Professional

Interface: Adaptec® SCSI adapter

Display: Color monitor, 800 × 600 screen resolution (or higher recommended), and 65,000 colors (or higher recommended)

Note:

Color and tone reproduction are subject to the display capability of your computer system, including the video card, display monitor, and software. See the product documentation for details.

Installing the Scanner Software

After connecting the scanner to your PC, install the scanner software (EPSON TWAIN Pro) from the CD-ROM. The installation steps differ depending on the version of Windows.

For Windows Millennium Edition users, see the instructions on this page.

For Windows 2000 users, see “For Windows 2000 users” on page 3-6.

For Windows 98 users, see “For Windows 98 users” on page 3-9.

For Windows 95 and NT 4.0 users, see “For Windows 95 and NT 4.0 users” on page 3-14.

Note:

- ❑ *If the scanner software is already installed and you are upgrading your system to Windows 98, 2000, or Millennium Edition, be sure to uninstall it before the upgrade, and then re-install it using the same steps described in this section. For more information, see “Maintenance and Troubleshooting” in your Online Reference Guide.*

- ❑ *To install the scanner software in Windows 2000 or NT 4.0, you need to log on to Windows as an Administrator.*

For Windows Millennium Edition users

Note:

If you use the Scanner and Camera Wizard to select a scanner driver, EPSON recommends selecting the EPSON TWAIN driver to scan images, not the “WIA” driver provided with Windows Millennium Edition. See Windows online help for details on the Scanner and Camera Wizard.

1. Connect your scanner to your PC.

2. Turn on the scanner, then your PC.

Note:

It is important to follow this power-on sequence if you are using a SCSI interface. Otherwise the Plug and Play feature will not work.

3. When the dialog box shown below appears, select the Specify the location of the driver option, then click Next.



4. Insert your scanner software CD in the CD-ROM drive.
5. Make sure the Search for the best driver for your device option and the Specify a location check box are selected. Next, browse the CD-ROM for EPSON\ (your preferred language)\WINME, then click Next.



- When the dialog box shown below appears, click Next.



- When the dialog box shown below appears, click Finish.



- This completes the EPSON TWAIN Pro installation. Restart your PC.

Note:

It is important to restart your PC before using the scanner.

You can now continue and install the other utility and applications from the scanner software CD. See "Installing other scanner software for Windows Millennium Edition, 98, and 2000" on page 3-13.

For Windows 2000 users

1. Connect your scanner to your PC.
2. Turn on the scanner, then your PC.

Note:

It is important to follow this power-on sequence if you are using a SCSI interface. Otherwise the Plug and Play feature will not work.

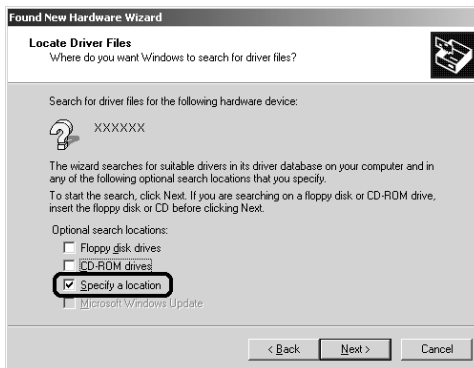
3. When the dialog box shown below appears, insert the scanner software CD in the CD-ROM drive, then click Next.



4. Select the Search for a suitable driver for my device option, then click Next.



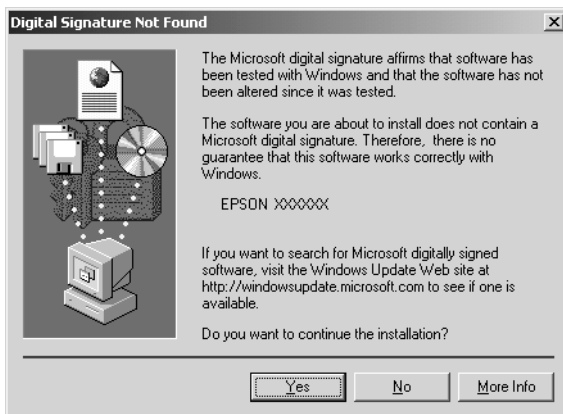
5. Make sure only the Specify a location check box is selected, and click Next.



6. Browse and select, or type in the CD-ROM drive letter, the EPSON folder, the folder of your preferred language, and the WIN2000 folder as the location, as shown below. Finally, click OK.



7. Follow the instructions on the screen. When the dialog box shown below appears, click Yes to continue.



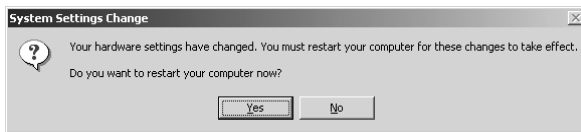
Note:

If you click No and stop installation, your scanner will appear under Other Devices with a question (?) mark in the Device Manager menu. You must reinstall EPSON TWAIN Pro. Follow the instructions on “Maintenance and Troubleshooting” in your Online Reference Guide.

- When the dialog box shown below appears, click Finish.



- If the dialog box shown below appears, click Yes to restart your PC.



This completes the EPSON TWAIN Pro installation. You can now continue and install the other utility and applications from the scanner software CD. See “Installing other scanner software for Windows Millennium Edition, 98, and 2000” on page 3-13.

For Windows 98 users

- Connect your scanner to your PC.
- Turn on the scanner, then your PC.

Note:

It is important to follow this power-on sequence if you are using a SCSI interface. Otherwise the Plug and Play feature will not work.

3. When a dialog box similar to the one shown below appears, insert the scanner software CD in the CD-ROM drive, then click Next.



4. Select the Search for the best driver for your device option, then click Next.



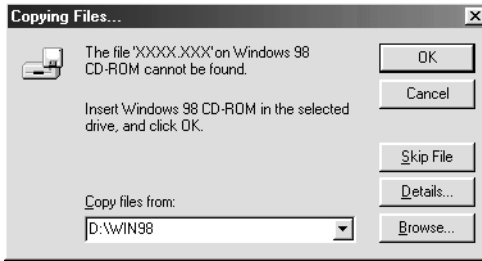
- 5. Make sure only the Specify a location check box is selected, then browse and select, or type in the CD-ROM drive letter, the EPSON folder, the folder of your preferred language, and the Win98 folder as the location, as shown below. Finally, click Next.



- 6. Follow the instructions on the screen. Depending on your system, you may be asked to insert the Windows 98 CD-ROM.



Replace the scanner software CD with the Windows 98 CD-ROM. Make sure that the correct CD-ROM drive letter and the WIN98 folder are specified in the Copy files from: box as shown below.



After installing the appropriate files, replace the Windows 98 CD-ROM with the scanner software CD.

7. When the following dialog box shown below appears, click Finish.



Note:

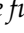
If a message appears instructing you to restart your computer, click Yes to restart your computer.

This completes the EPSON TWAIN Pro installation. See the next section to install additional software from the CD-ROM.

Installing other scanner software for Windows Millennium Edition, 98, and 2000

Follow the steps below to install Presto! PageManager for EPSON and other scanner software in your computer.

Note:

To take advantage of all the functions of your scanner's  Start button, be sure to install Presto! PageManager for EPSON following the instructions below.

1. Double-click the My Computer icon.
2. Double-click the CD-ROM drive icon. A dialog box asking for your preferred language appears on your screen. If no dialog box appears, double-click the Cdsetup.exe icon.
3. Select your preferred language and click OK.
4. The following dialog box appears. Click Add Software.



5. A list of software appears. Click to select the names of the software you want to install in your PC. Make sure Presto! PageManager for EPSON is selected.
6. Click OK, then follow the on-screen instructions to finish installing the software.

Note:

If folders for the applications on the CD-ROM contain README files, double-click and read them as they contain up-to-date information regarding the software.

For Windows 95 and NT 4.0 users

1. Make sure that the scanner is turned on.
2. Turn on the PC, and start Windows.

If you are using Windows NT 4.0, insert the scanner software CD in the CD-ROM drive, then go to step 3.

For Windows 95, either of the following dialog boxes appears.

- If the following dialog box appears, insert the scanner software CD in the CD-ROM drive, then click Next.



When the following dialog box appears, click the Other Locations button.



3

The Select Other Location dialog box appears. Select the CD-ROM drive, the EPSON folder, the folder of your language preference, and the Win95 folder. An example is shown below.



When a dialog box similar to the one shown below appears, click Finish and go to step 3.

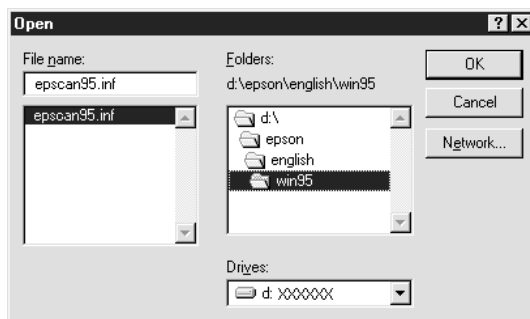


- ❑ If the following dialog box appears, insert the scanner software CD in the CD-ROM drive.



Select Driver from disk provided by hardware manufacturer. Click OK then Browse.

Select the CD-ROM drive, the EPSON folder, the folder of your preferred language, and the Win95 folder. Finally click OK and go to step 3.



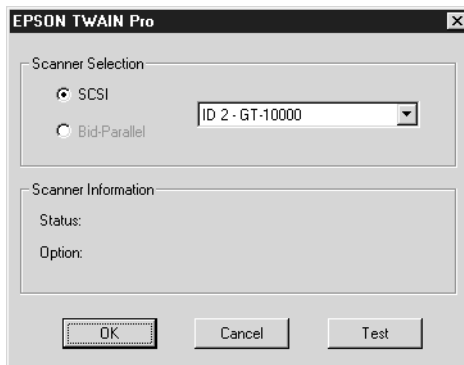
3. Double-click the My Computer icon.
4. Double-click the CD-ROM drive icon. A dialog box asking for your preferred language appears. If no dialog box appears, double-click the Cdsetup.exe icon.
5. Select your preferred language and click OK.
6. When the following dialog box appears, click Add Software.



7. From the list of applications, select those you want to install. Make sure EPSON TWAIN Pro and PageManager for EPSON are selected for installation.
8. Click OK. Then follow the instructions on the screen.

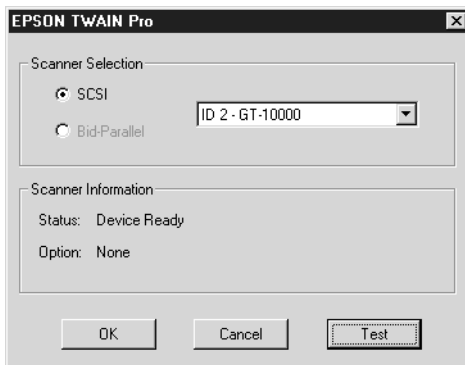
The setup program installs EPSON TWAIN Pro, EPSON Scanner Monitor and PageManager for EPSON.

9. After EPSON TWAIN Pro is installed, the EPSON TWAIN Pro setup dialog box appears.



10. Make sure that SCSI is selected and your EPSON scanner appears in the Scanner Selection list. If not, see “Maintenance and Troubleshooting” in your *Online Reference Guide*.

11. Click **Test** to check the connection. If everything is properly installed and connected, **Status: Device Ready** appears under **Scanner Information** in the dialog box.



If the “Device Ready” message does not appear, see “Maintenance and Troubleshooting” in your *Online Reference Guide*.

12. Click **OK** to close the EPSON TWAIN Pro dialog box.

Selecting Scanners

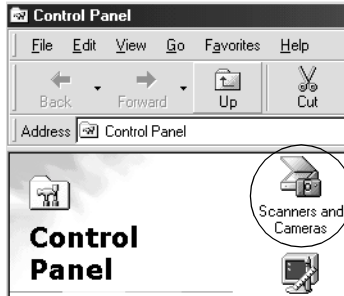
If several EPSON TWAIN Pro-compliant scanners are connected to your PC, follow the instructions below to select one of them to use.

Note:

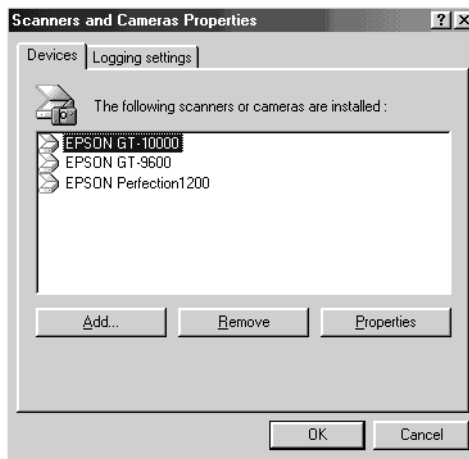
You can only connect and use scanners that are of the same model if you use different interface connections.

For Windows Millennium Edition, 98, and 2000 users

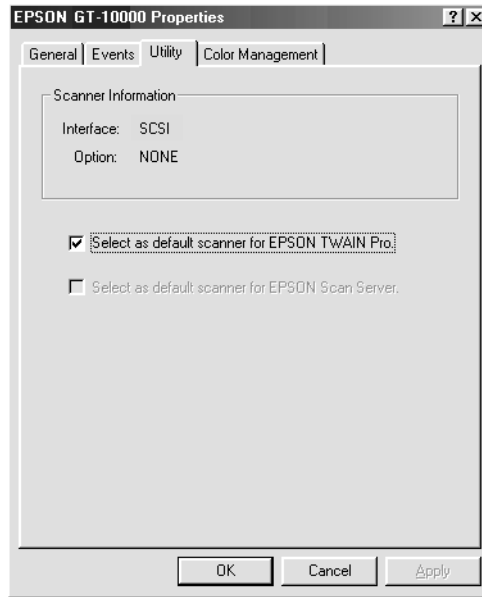
1. Double-click the Scanners and Cameras icon in Control Panel.



2. Select a scanner you want to use from the scanners and cameras list in the Scanners and Cameras Properties dialog box. Click Properties, and then click the Utility tab.



3. Make sure Select as default scanner for EPSON TWAIN Pro is selected and then click OK.

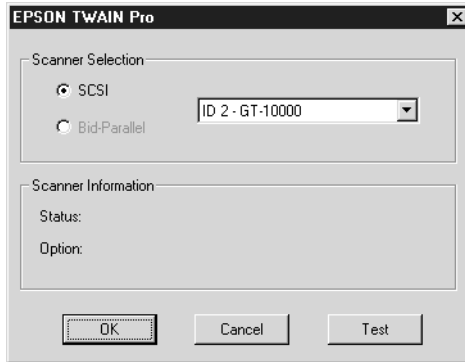


Note:

If you have installed EPSON Scan Server, you can set up your scanner to be used on the network by selecting the Select as default scanner for EPSON Scan Server check box.

For Windows 95 and NT 4.0 users

1. Double-click the EPSON TWAIN Pro icon in Control Panel. The EPSON TWAIN Pro setup dialog box appears.



2. Open the Scanner Selection list box and select the scanner you want to use. Then click OK.

Chapter 4

Using Your Scanner

Scanning Procedure	4-2
Placing a Document on the Scanner	4-2
Removing the Cover for Thick or Large Documents	4-5
Starting EPSON TWAIN Pro	4-7
Scanning Your Document	4-9
Making settings	4-9
Scanning and saving	4-14
Scanning by Pressing the Start Button	4-14



Scanning Procedure

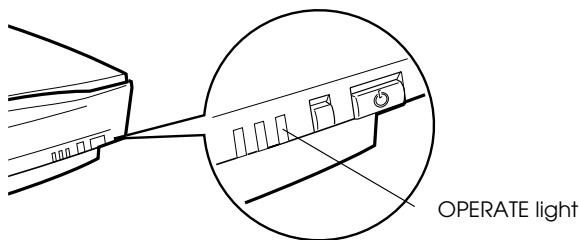
This chapter shows you how the scanner operates. The basic procedure for scanning is as follows:

1. Turn on the scanner. (Keep in mind the “Power-on sequence” on page 2-13.)
2. Place the document you want to scan on the document table. (This is described in detail in the next section.)
3. Run the scanner software and scan. (See “Starting EPSON TWAIN Pro” on page 4-7 for details on scanning.)

Placing a Document on the Scanner

Before scanning a document, remember to respect the rights of copyright owners. Do not scan published text or images without first checking the copyright status.

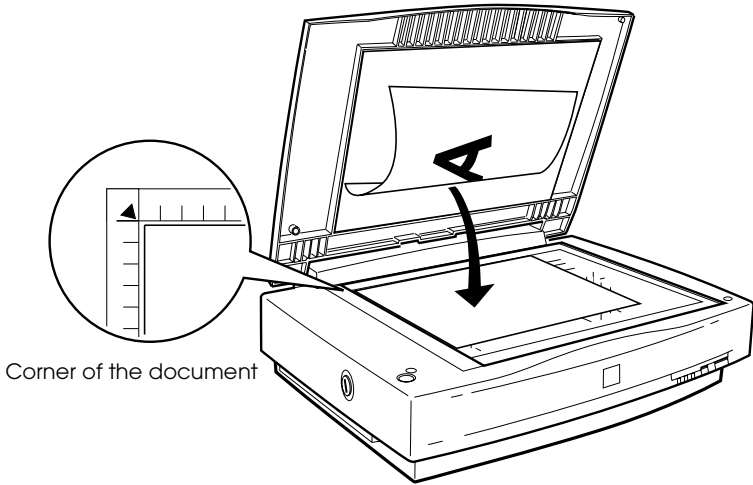
1. Turn on the scanner by pressing the OPERATE button. The OPERATE light comes on.



2. Turn on the PC and make sure that the scanner's READY light is on.
3. Open the document cover.

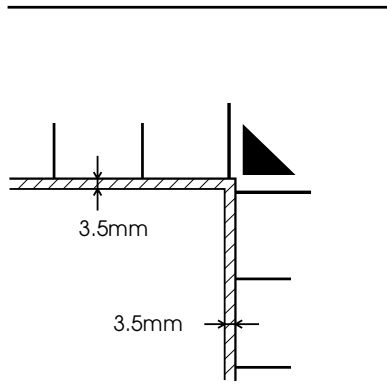
- Place the document on the document table, with the side to be scanned facing down. Make sure that the document is carefully aligned with the document guides.

Use the document guide strip to align horizontal edge of the document.

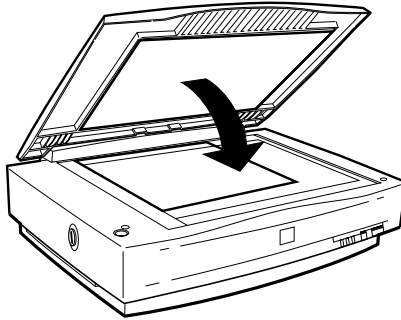


Note:

The area with a width of 3.5mm from both horizontal and vertical rulers is not scanned.



5. Close the document cover gently so that the document does not move.

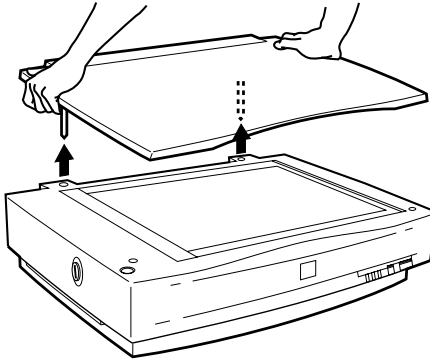


Note:

- ❑ *Make sure the document is flat against the glass surface, otherwise the image will appear fuzzy and out of focus. Also be sure to close the document cover to prevent interference from external light.*
 - ❑ *Always keep the document table clean. See “Maintenance and Troubleshooting” in your Online Reference Guide.*
 - ❑ *Do not leave photographs on the document table for an extended period of time as they may stick to the glass.*
 - ❑ *Do not place heavy objects on top of the scanner.*
6. Start your scanner software, and follow scanning instructions described later in this chapter or your *Online Reference Guide*.

Removing the Cover for Thick or Large Documents

For thick documents or other materials, you can remove the document cover. To do this, hold the back of the document cover behind the hinge and lift straight up.



Hold the back of the document cover and lift straight up.

4

Note:

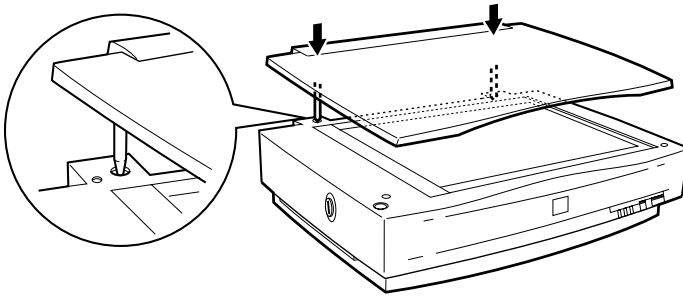
When scanning with the cover removed, do not leave any area of the document table exposed to prevent interference from external light.



Caution:

Do not force the cover off the scanner or lift the cover from in front of the cover hinge. Doing so can cause damage to the cover.


When you are finished scanning, reattach the document cover by pushing straight down on the back until it clicks into place.





Caution:

Make sure both of the cover's notches are directly above the clips on the scanner before pushing it down into place; otherwise damage may occur.

Starting EPSON TWAIN Pro

There are two ways to scan; with an application that supports TWAIN, or with the  Start button and preassigned application software.

If you ..

- ❑ use an application that supports EPSON TWAIN Pro to scan, open your application (see “Starting EPSON TWAIN Pro through your application software” below).
- ❑ want to scan an image directly to your application without opening EPSON TWAIN Pro or the TWAIN-compliant application every time, set up the  Start button and the application to work with (See Chapter 5, “Using the Start Button.”) Then simply press the  Start button.

Note:

- ❑ *Even if your application supports TWAIN, some features of EPSON TWAIN Pro may not be available depending on the application software.*
- ❑ *Windows 2000 or NT 4.0 users who use the NTFS file system and do not have Administrator privileges need to have permission to modify the following folders and subfolders:*

EPSON TWAIN Pro Users:

C:\WINNT\TWAIN_32\EPFBPR2

EPSON TWAIN Pro Network Users:

C:\WINNT\TWAIN_32\EPFBPR2N

Starting EPSON TWAIN Pro through your application software

Application programs that support the scanning interface standard TWAIN, allow you to scan images while an application is running. To verify whether your application is compatible with TWAIN, see your application documentation.

How you should open EPSON TWAIN Pro and scan varies depending on the application. Read the following to find out how to access EPSON TWAIN Pro.

1. Start your application. For example, Presto! PageManager for EPSON.
2. Select Select Source from the File menu, and then select EPSON TWAIN Pro.

Note for Windows Millennium Edition users:

Do not select WIA-(scanner name) as the TWAIN data sources.

Note:

You usually need to perform this step only the first time you use the scanner with your application.

3. Choose Acquire from the File menu to open EPSON TWAIN Pro.

To scan, see the next section.

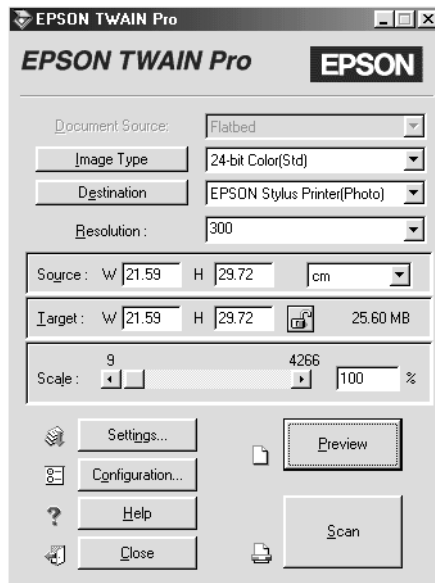
Scanning Your Document

Once EPSON TWAIN Pro or EPSON TWAIN Pro Network is started, you are ready to make basic scanning settings and scan your document. Follow the instructions in this section.

Making settings

Follow the instructions in this section to make necessary settings in the main dialog box. This section also tells you how to preview your document in the Preview window before scanning. For detailed information on using EPSON TWAIN Pro to optimize scanning, see your *Online Reference Guide*. EPSON TWAIN Pro's online help also provides more details on settings. Click Help to access help.

4



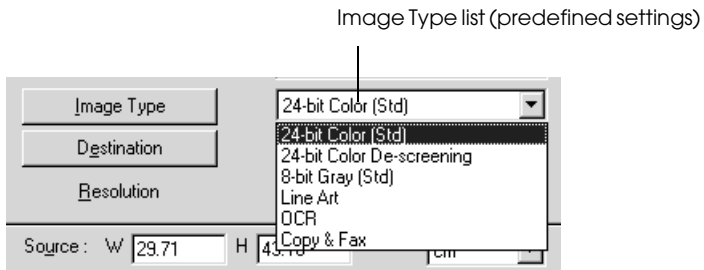
Making the Document Source setting

Before scanning, you need to make sure the Document Source setting is appropriate. Refer to the following chart.

Flatbed	When placing a document on the scanner document table.
ADF-Single-sided	Select when scanning single-sided documents on the optional Automatic Document Feeder. Available only when this option has been installed.
ADF-Double-sided	Select when scanning double-sided documents on the optional Automatic Document Feeder. Available only when this option has been installed.

Making the Image Type setting

Select the type of image to be scanned from the predefined setting in the Image Type list.

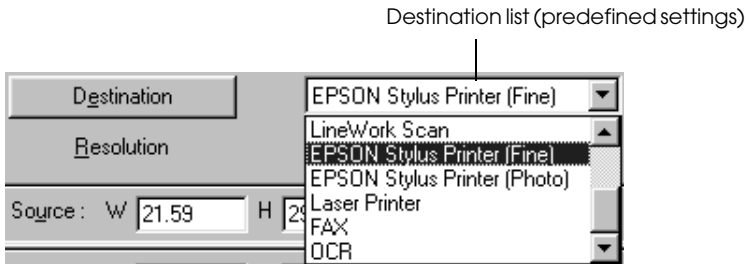


Refer to the following chart to help choose a suitable predefined setting for your document.

24-bit Color (Std)	24-bit colors, high quality
24-bit Color De-screening	24-bit colors, high quality, and de-screening
8-bit Gray (Std)	256 grays, high quality, with de-screening available
Line Art	Black-and-white, draft quality, high speed
OCR	Black-and-white, high quality, and Text Enhancement Technology
Copy & Fax	Black-and-white, draft quality, high speed, and Auto Area Segmentation

Making the Destination setting

Use the Destination list to select a predefined destination, or output device, where the scanned image is to be printed or displayed.



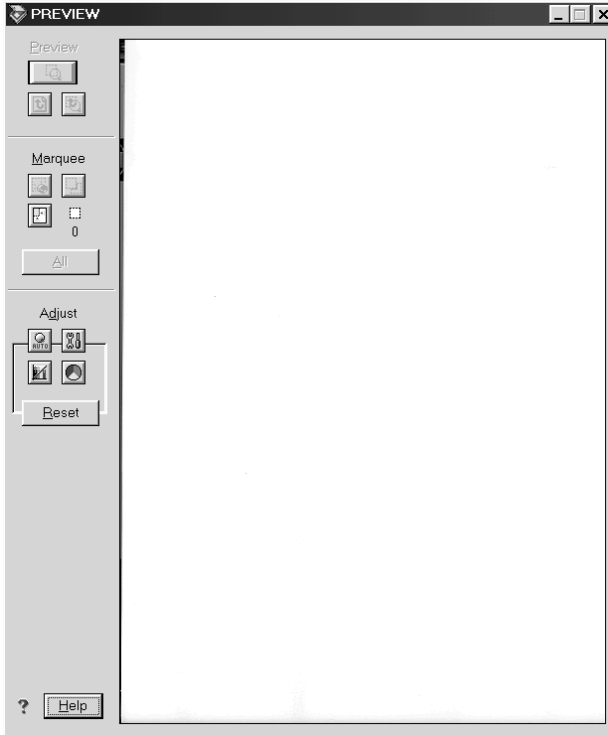
Refer to the following chart to help choose a suitable predefined setting for your document.

Screen/Web	Suitable for displaying on screen
Prepress (175, 150, 133, 120 lpi)	Optimize for prepress printing at 175, 150, 133, or 120 lines per inch
LineWork scan	Optimize for LineWork scanning
EPSON Stylus Printer (Fine or Photo)	When using an EPSON Stylus printer and printing scanned images with the Economy, Normal, or Fine Print Quality settings in your printer software, select EPSON Stylus Printer (Fine). When printing with the SuperFine or Photo Print Quality settings, select EPSON Stylus Printer (Photo).
Laser Printer	Optimize for printing on a laser printer
Fax	When scanning a facsimile
OCR	For optical character recognition scanning

Once you make the settings explained above, you can preview your document and make further settings to adjust the image quality, or you can scan your document without previewing it. To preview the document, see the next section. To scan your document, see “Scanning and saving” on page 4-14.

Previewing images

To preview an image, click the Preview button in the EPSON TWAIN Pro main dialog. The Preview window appears.



Use the Preview tools to change the size of the previewed image. Use the Marquees tools to select one or a number of areas of the image. Use the Adjust tools to adjust the image quality. For details on using the Preview window to optimize scanning, see the *Online Reference Guide*, or EPSON TWAIN Pro's online help.

Note:

Although the image in the Preview window changes as you make settings, the settings do not affect the actual image until you scan or rescan the image.


Scanning and saving


After you finish making EPSON TWAIN Pro settings, you can scan your document by clicking the **SCAN** button in the main dialog box.

During scanning, a window appears indicating the progress of the scan. You can cancel scanning by clicking the **Cancel** button.

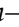
After the scanning finishes, you can save your scanned document as a file in your computer. First, you may need to close EPSON TWAIN Pro's main dialog box. Then, choose **Save** or **Save As** from your application's **File** menu. For details, see your application documentation.

Scanning by Pressing the Start Button

You can open EPSON TWAIN Pro, start scanning, and have the scanned image sent to a certain application, simply by pressing the  **Start** button on your scanner. To use this feature, you need to install PageManager for EPSON, or other **Start** button compatible software. The following occurs:

- ❑ Windows Millennium Edition, 98, and 2000, or EPSON Scanner Monitor software on an operating system other than Windows Millennium Edition, 98, and 2000, detects when the  **Start** button is pressed and sends information to the **Start** button compatible application, such as PageManager for EPSON.
- ❑ The **Start** button compatible application will automatically open EPSON TWAIN Pro, scan the image and process it in the way the application is designed.

Note:


- ❑ *You need to set up the Start button compatible software before using this feature. See Chapter 5 and the documentation that comes with the application.*
- ❑ *The scanned image will be handled by the software to its maximum capability. For example, using PageManager for EPSON, you can send the scanned image to a printer to print, or convert your scanned OCR image to text format and paste it in a word processing application—all by simply pressing the  Start button.*
- ❑ *If the scanner is connected to a PC which is running EPSON Scan Server, the Start Button feature mentioned above is disabled. For information on using the Start button in a networked environment, refer to the EPSON Scan Server & EPSON TWAIN Pro Network User's Guide.*

Chapter 5

Using the Start Button


Overview of Start Button Features	5-2
Making Windows Millennium Edition, 98, and 2000 Settings.....	5-3
Making PageManager Settings	5-5

Overview of Start Button Features

When your scanner is connected directly to your computer, you can set up the scanner's  Start button to operate in the following ways:

- ❑ Open an application of your choice
(for Windows Millennium Edition, 98, and 2000 users only)
- ❑ Scan and send the scanned document to a specified application
(if you have installed Presto! PageManager for EPSON from the scanner software CD-ROM)


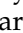
Note:

If you are using your scanner over a network, you cannot use the scanner's  Start button in the ways described above.

If you are using Windows Millennium Edition, 98, or 2000, read "Making Windows Millennium Edition, 98, and 2000 Settings" on page 5-3 first.

If you are using Windows 95 or NT 4.0, read "Making PageManager Settings" on page 5-5.

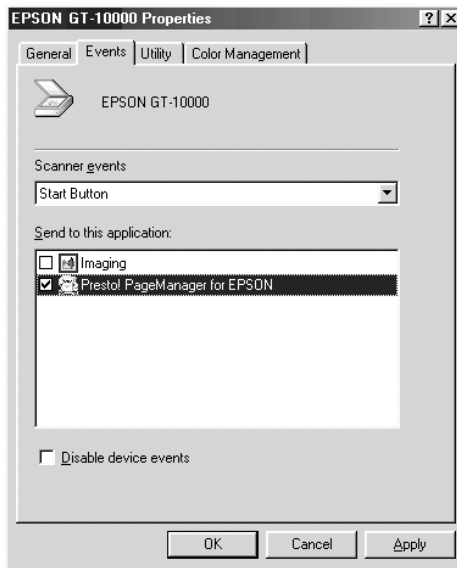
Making Windows Millennium Edition, 98, and 2000 Settings

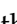
This section explains how to make settings that control which application opens when you press the scanner's  Start button. You can specify one application to open automatically when you press the  Start button, or you can have a window open allowing you to choose from a list of applications. Follow the steps below to make these settings.


Note:

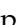
These settings do not apply to Windows 95 or NT 4.0.

1. Click Start, point to Settings, and select Control Panel.
2. Double-click the Scanners and Cameras icon. The Scanners and Cameras Properties dialog box appears.
3. Select your scanner from the list of installed scanners and cameras, click the Properties button, then click the Events tab.




4. In the Scanner events list, make sure Start Button is selected.
5. To have an application open automatically when you press the  Start button, select the check box next to that application in the Send to this application window, and clear the check boxes of all the other applications.

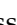
To have your document scanned and sent to an application with one press of the  Start button, select Presto! PageManager for EPSON, complete the steps in this section, then proceed to “Making PageManager Settings” on page 5-5.

If you want to choose from a list of applications when you press the  Start button, select the check boxes of the applications you want.

Note:


- Depending on the application, EPSON TWAIN Pro may also open when you press the  Start button.*
- Some applications do not support linkage to scanners and digital cameras. Linkage is available only with the applications that appear in the Send to this application list.*

6. To save your settings, click OK, then click OK again.

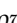
If you did not select Presto! PageManager for EPSON, or if you selected multiple applications, close all applications and try pressing the  Start button on the scanner to confirm that everything is set up correctly.

If you selected Presto! PageManager for EPSON only, see the next section to make settings for scanning and sending the scanned document to a specified application.

Making PageManager Settings

This section explains how to set up Presto! PageManager for EPSON to scan and send a document to a specified application with one press of your scanner's  Start button.

Note for Windows Millennium Edition, 98, and 2000 users:

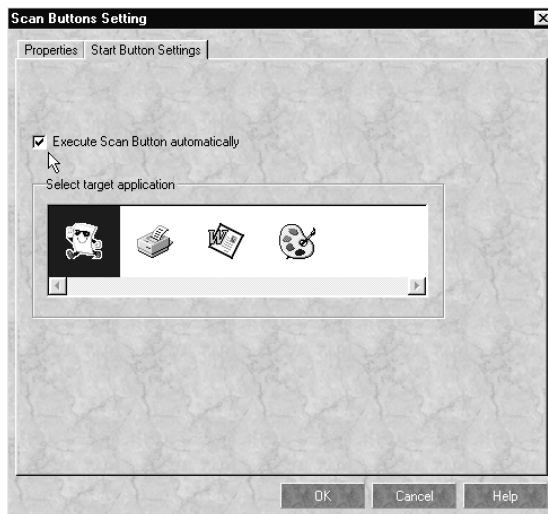
Before setting up PageManager, make sure that your system is set to automatically start up PageManager when you press the  Start button. For instructions, see "Making Windows Millennium Edition, 98, and 2000 Settings" on page 5-3.

1. Start Presto! PageManager for EPSON.

Note:

If the EPSON TWAIN Pro main dialog box appears on your screen, close it.

2. From the File menu, select Scan Buttons Setting.
3. In the Scan Buttons Setting dialog box, click the Start Button Settings tab.



4. In the Select target application window, click the icon of the application or device to which you want to send scanned data.

Note:

If the application or device you want to select does not appear in the Select target application window, you can add its icon to the window. For instructions, see your PageManager documentation.

5. Make sure the Execute Scan Button automatically check box is selected, then click OK.

The selected application or device is now assigned to the scanner's ☒ Start button. Close all applications and try pressing the ☒ Start button on the scanner to confirm that everything is set up correctly.

Options

Using the Automatic Document Feeder	6-2
Unpacking the Automatic Document Feeder	6-2
Installing the Automatic Document Feeder	6-3
Loading documents into your Automatic Document Feeder	6-7
Loading documents manually	6-8
Scanning from the Automatic Document Feeder	6-9
Changing orientation of scanned images	6-11
Fixing paper jams in the Automatic Document Feeder	6-14
Document specifications	6-16
Using the IEEE 1394 Interface Board	6-17
Installing the IEEE 1394 interface board to your scanner	6-18
Understanding IEEE 1394 connections	6-20
Connecting to your computer	6-20
Installing the scanner software	6-22

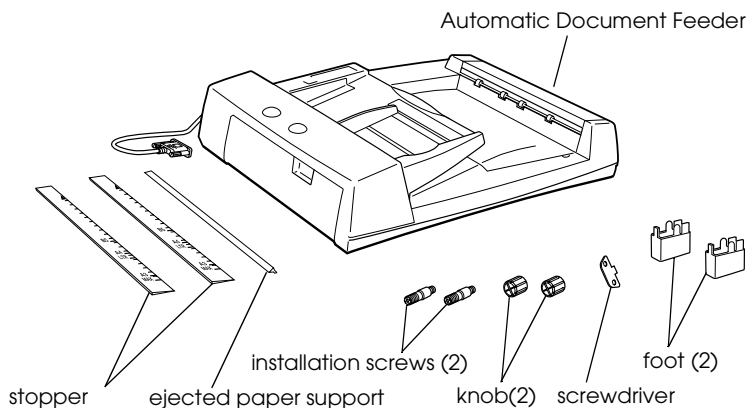


Using the Automatic Document Feeder

The Automatic Document Feeder (B81321*) allows you to automatically load multiple-page documents into your scanner. The document feeder is particularly useful for OCR (optical character recognition) scanning, or for creating an image database.

Unpacking the Automatic Document Feeder

When you unpack your Automatic Document Feeder, make sure the following parts are included and not damaged. If you find any missing or damaged items, contact your EPSON dealer immediately.



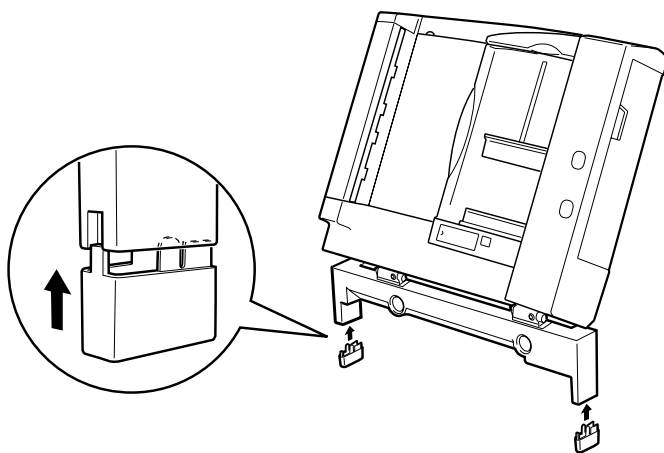
Installing the Automatic Document Feeder

Before installing the Automatic Document Feeder, be aware that:

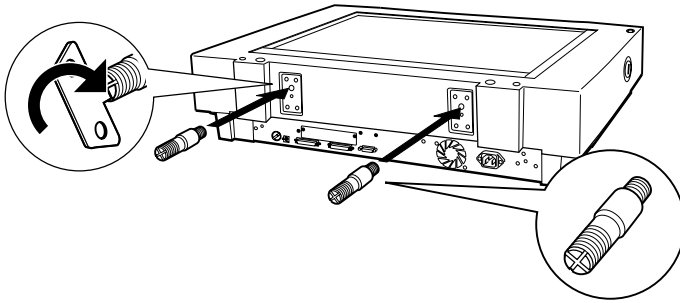
- ❑ The Automatic Document Feeder is heavy, so you may need to have someone help you lift it.
- ❑ The Automatic Document Feeder is large, so you should clear sufficient space around the scanner.

Follow the steps below to install the Automatic Document Feeder on your EPSON scanner.

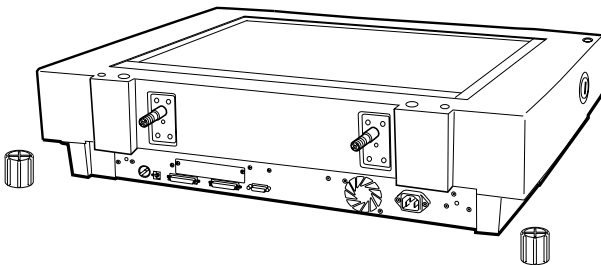
1. Make sure your scanner is turned off, and then unplug the scanner's power cord.
2. Remove the scanner's document cover by holding the cover behind the hinge and lifting the back of the cover straight up. (See "Removing the Cover for Thick or Large Documents" on page 4-5.)
3. Remove the document guide strip from the document table.
4. Attach the two feet as shown below.



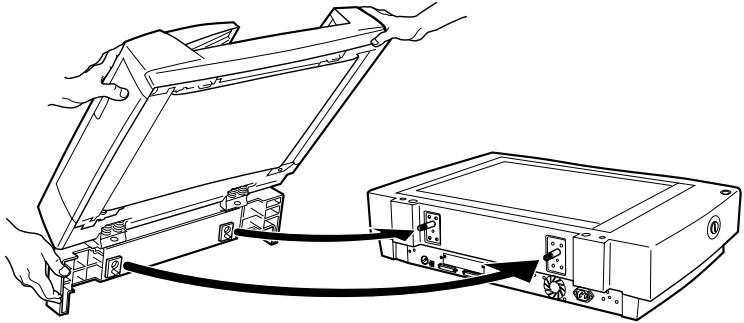
5. Insert the installation screws included with the Automatic Document Feeder into the holes in the back of the scanner and secure them using the included screwdriver as shown below.



6. Place the two knobs which are enclosed with the Automatic Document Feeder beside the scanner.



7. Align the installation screws with the holes of the Automatic Document Feeder. Slide the holes over the installation screws.

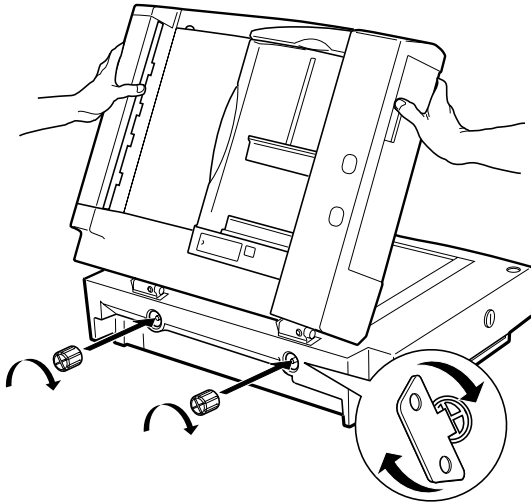


Warning:

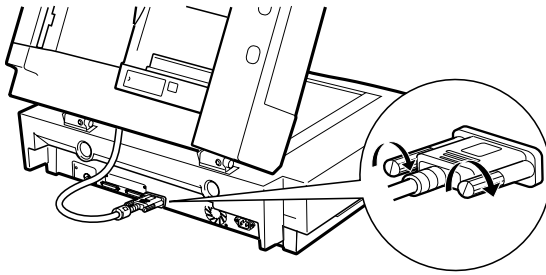
The Automatic Document Feeder is heavy. Ask for assistance when lifting it.

6

8. Secure the knobs to the ends of the installation screws using the screwdriver.



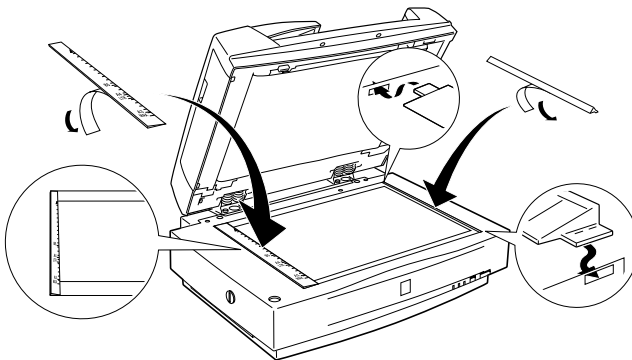
9. Attach the Automatic Document Feeder's connector to the scanner's option interface.



10. Peel off the backing from the dark gray stopper and from the ejected paper support, which are provided with the Automatic Document Feeder. Attach the stopper and ejected paper support to the scanner as shown below.

Note:

There are two stoppers included with the scanner, a light gray one and a dark gray one. The dark gray one is designed for use with your scanner. Do not use the light gray one.



11. Close the Automatic Document Feeder.
12. Connect the power cord to the scanner and then turn on the scanner.

Loading documents into your Automatic Document Feeder

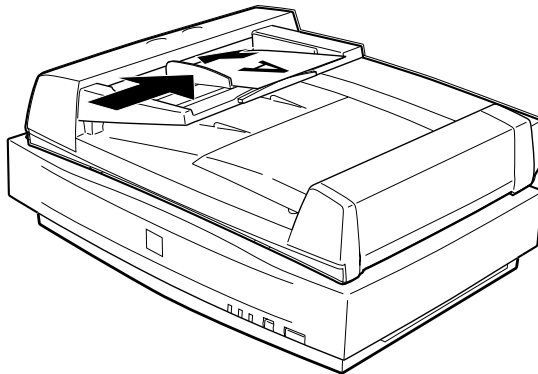
Note:

Make sure EPSON TWAIN Pro and PageManager for EPSON are installed.

The Automatic Document Feeder can automatically load up to 100 sheets. See “Document specifications” on page 6-16 for further information.

Follow the steps below to load documents into the Automatic Document Feeder.

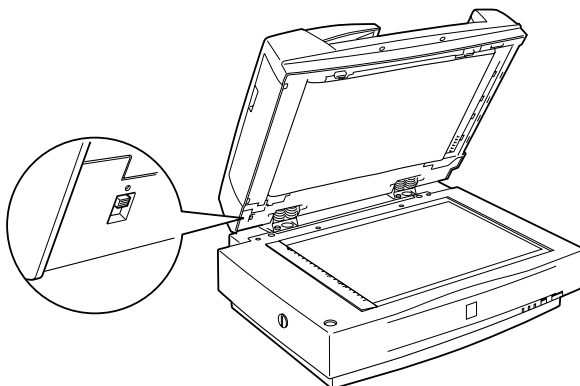
1. Slide the right edge guide all the way to the right.
2. Insert the document stack face up into the Automatic Document Feeder until it meets resistance. Then move the right edge guide so it is flush with the right edge of your document.



Note:

- Be sure to insert documents face up.*
- If you load multiple pages in the Automatic Document Feeder, the pages will be fed from the top and will be ejected face down.*

- ❑ *To automatically scan both sides of a document, choose the Double-side setting in EPSON TWAIN Pro.*
- ❑ *Be sure the switch on lower left corner of the underside of the Automatic Document Feeder is set with the switch towards the circular mark, as shown below.*



Loading documents manually

You can load documents manually even when the Automatic Document Feeder is installed.

To load manually, lift the Automatic Document Feeder and place the document on the document table. Then lower the Automatic Document Feeder and scan the document.

Note:

- ❑ *Opening the Automatic Document Feeder while scanning is in progress will result in an option error and may result in a paper feeding error.*
- ❑ *Always close the Automatic Document Feeder and the middle cover before scanning or using the feeder.*

Scanning from the Automatic Document Feeder

The scanning instructions are divided into two sections; read “Scanning a complete document” to scan an entire document or image, or read “Scanning part of a document” to scan only a certain part of an image or document.

Scanning a complete document

You do not need to use the preview feature when scanning a full document or image. The scanner automatically finds and scans the whole image. Follow the steps below to scan an image or document.

1. Load the document in the Automatic Document Feeder.
2. Start the PageManager.
3. Select EPSON TWAIN Pro from Select Source of PageManager’s File menu.
4. Select Acquire from the File menu.
5. In the dialog box of EPSON TWAIN Pro or EPSON TWAIN Pro Network, make sure that ADF-Single-sided or ADF-Double-sided is selected from the Document Source list. Also choose appropriate settings for the scanning.
6. Click Scan.

After scanning the entire stack of documents, a window with thumb-nail images appears. In this window you can select and change the orientation of the scanned images.

Scanning part of a document

To scan only a part of an image, follow the steps below.

1. Load the document(s) in the Automatic Document Feeder.
2. Start PageManager and select **Acquire** from the File menu.
3. In the dialog box of EPSON TWAIN Pro or EPSON TWAIN Pro Network, click **Preview**. The document is ejected after previewing.

Note:

The second page will be fed immediately after the first page is scanned and ejected without being scanned.

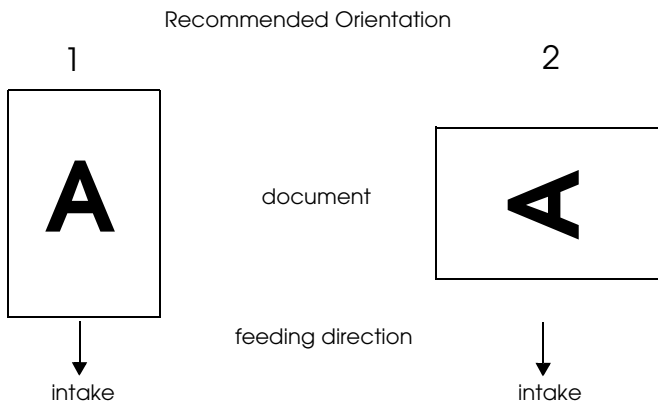
4. Draw a marquee (frame around a part of a document) to define the part of the image you want to scan by dragging the mouse pointer over that area.
5. Set document(s) to be scanned in the Automatic Document Feeder including the ejected document.
6. Choose your settings in EPSON TWAIN Pro and click the **Scan** button. See your *Online Reference Guide* for details on choosing EPSON TWAIN Pro settings.

After scanning the entire stack of documents, a window with thumb-nail images appears. In this window you can select and change the orientation of the scanned images.

Changing orientation of scanned images

PageManager allows you to correct any misorientation of scanned images caused by the Automatic Document Feeder.

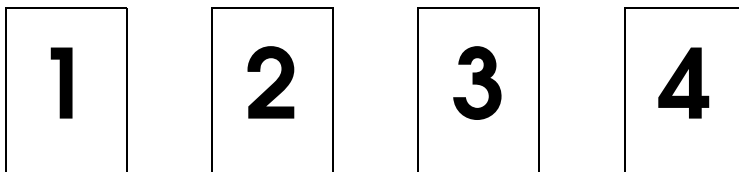
Images produced by one-sided scanning



6

When you set a stack of document in direction 1

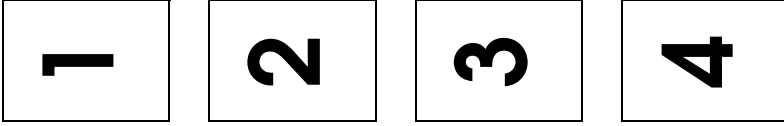
In the PageManager dialog box, the scanned images appear as shown below.



You do not need to correct the orientation of the images. Click OK to close the window.

When you set a stack of document in direction 2

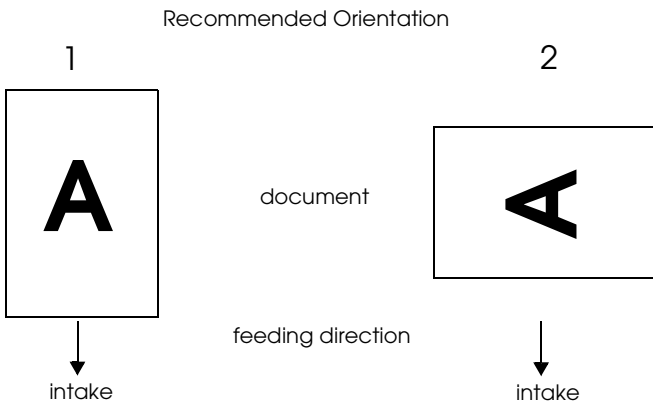
In the PageManager dialog box, the scanned images appear as shown below.



1. In the PageManager dialog box, select the All check box from Select Images. This highlights the border of all images in red.
2. Select 90° from Rotate Images and click Done.

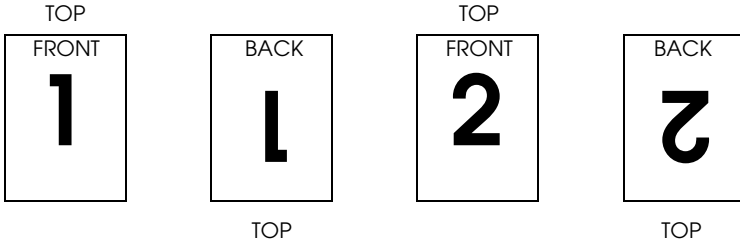
If you want to reset the rotation, click Back to Original.

Images produced by double-sided scanning



When you set a stack of document in direction 1

In the PageManager dialog box, the scanned images appear as shown below.

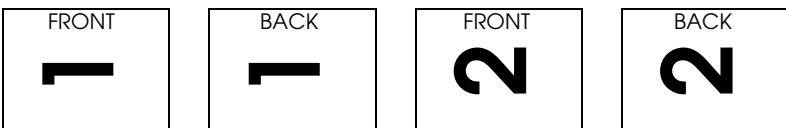


1. In the PageManager dialog box, select the Even Pages check box from Select Images. This highlights the border of the selected images in red.
2. Select Rotate 180° from Rotate Images and click Done.

If you want to reset the rotation, click Back to Original.

When you set a stack of document in direction 2

In the PageManager dialog box, the scanned images appear as shown below.

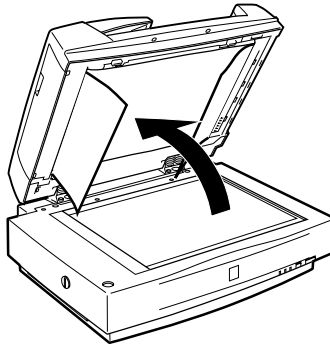


1. In the PageManager dialog box, select the All check box of Select Images. This highlights the border of all images in red.
2. Select 90° from Rotate Images and click Done.

If you want to reset the rotation, click Back to Original.

Fixing paper jams in the Automatic Document Feeder

If a paper jam occurs, first open the Automatic Document Feeder's cover, then clear the paper on the document table and determine where the paper jam occurred.

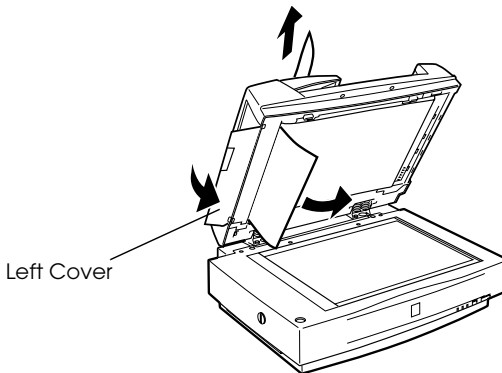


If paper jams at the feeder position:

Open the left cover and carefully pull the jammed paper out of the feeder mechanism.

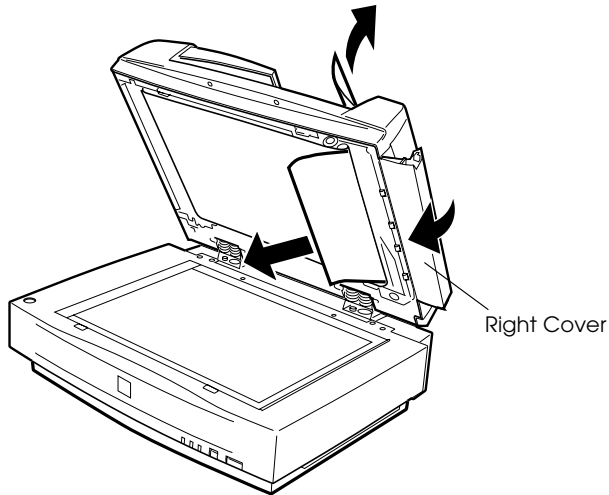
Note:

Be careful not to pull too hard; otherwise the paper may tear, making it more difficult to remove.



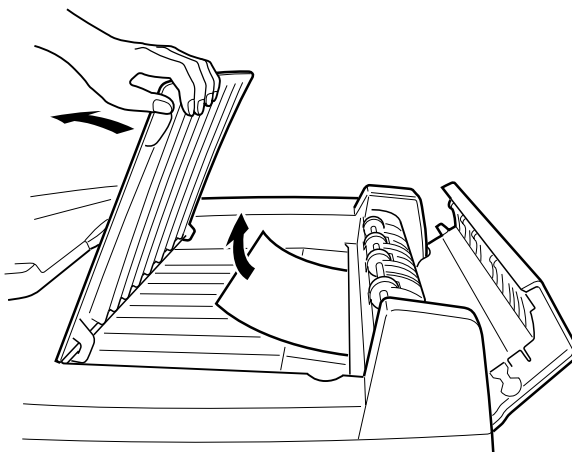
If paper jams at the paper eject position:

Open the right cover and carefully pull the jammed paper out of the feeder mechanism.



Note:

Be careful not to pull too hard. If the paper tears, open the middle cover and remove the paper as shown below.



After removing the jammed paper, close the Automatic Document Feeder cover and reset the scanner by pressing the Reset button.

Document specifications

Document size	Orientation
A3, Ledger, B4, Legal, A4, Letter, B5 or Executive, A5	Portrait
A4, Letter, B5 or Executive, A5	Landscape

Weight:	50 to 127 g/m ²
Paper quality:	High-quality bond or thermal paper
Document type:	Documents printed with impact printers, laser printers, or facsimile machines

Document conditions

Be sure to check the following before feeding a document:

- Ink on the document is dry.
- The document has no holes, is not ripped or curled, and has no articles attached to it.
- The document has no staples or other objects attached that might damage the feeder mechanism.
- The document has no folds closer than 8mm to its edge.
- The document is not a multipart form or a bound document.
- The document has no rear carbon coating.
- The document has no cut out areas.

Other precautions

Do not feed photographic sheets or particularly valuable original artwork into the Automatic Document Feeder; misfeeding a document may result in accidental wrinkling or damage.

When you are scanning high-quality color or halftone documents, it is recommended you open the Automatic Document Feeder and scan documents individually.

Using the IEEE 1394 Interface Board

The optional IEEE 1394 interface board (B80834*) offers high-speed data transfer and flexible connectivity for your scanner. It supports a peak data transfer rate of 400 Mbps, and interface cables can be connected and disconnected without turning off the scanner or your computer. You can connect multiple IEEE 1394 devices simultaneously in either a daisy-chain or tree configuration.

6

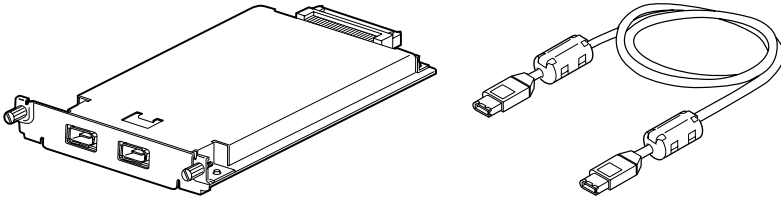
System requirements

System: Microsoft® Windows® Millennium Edition and 2000 preinstalled with IEEE 1394 OHCI port

Unless your PC already has built-in IEEE 1394 OHCI ports or an OHCI compliant IEEE 1394 board installed, you need to install an OHCI compliant IEEE 1394 board.

Installing the IEEE 1394 interface board to your scanner

To use your scanner as an IEEE 1394 device, you need to install the optional IEEE 1394 interface board.

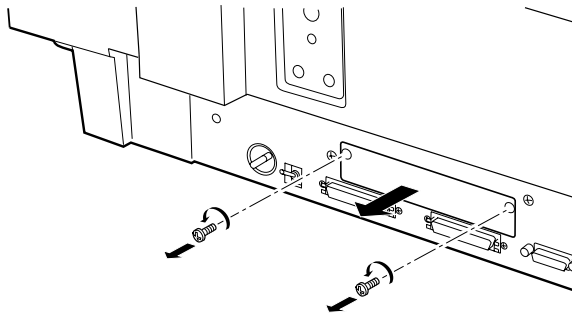


1. Turn off the scanner. Unplug any power cords, then disconnect all cables from the back panel of your scanner.
2. Use a cross-head screwdriver to remove the two screws securing the shield plate to the optional interface slot; then remove the plate. Be sure to keep both screws; you may need to use them again if you re-install the shield plate.

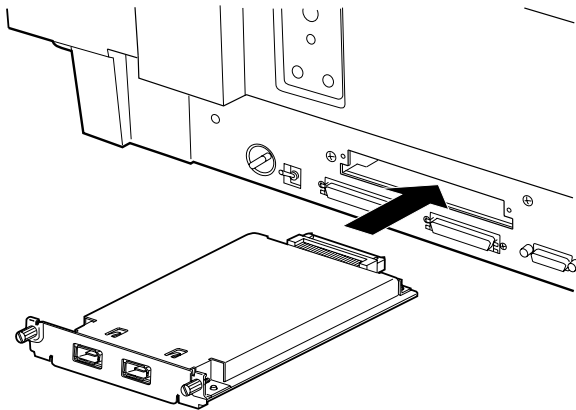


Caution:

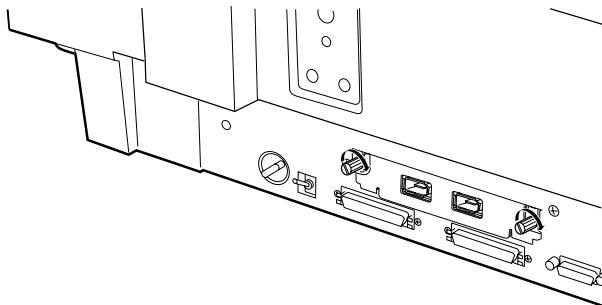
Static electricity can damage electronic components. Discharge static electricity by touching the metal frame of your scanner before handling the interface board.



3. Insert the interface board along the side guide rails into the expansion slot in the optional interface slot.



4. Secure it with the retaining screws.



5. Reconnect all cables.

Understanding IEEE 1394 connections

The interface board is equipped with two cable connectors. One is used to connect the card to the computer, and the other is used to connect other IEEE 1394 devices in a daisy chain or tree configuration. Use the cable supplied when making the connection. The cable can be connected without switching off the power supply to the computer or the scanner because it complies with the IEEE 1394 standard. Cables can be connected whether the scanner or computer are on or off.



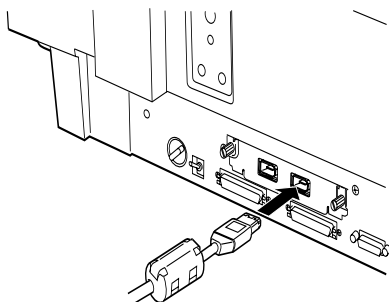
Caution:

Do not connect or disconnect IEEE 1394 cables when the scanner software is running.

Connecting to your computer

Connect the scanner to your computer or other IEEE 1394 device as follows:

1. Connect one end of the cable to the IEEE 1394 port of the interface board on back of the scanner.

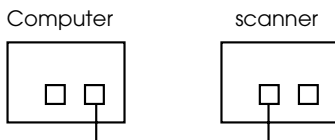


2. Connect the other end of the cable to the IEEE 1394 port on your computer, or other IEEE 1394 device.

When connecting the scanner directly to your computer

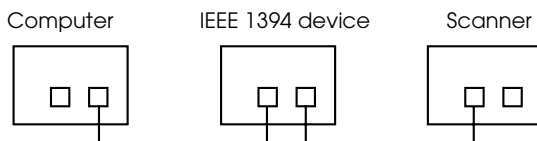
Connect the cable connector to your computer's IEEE 1394 port.

The other cable can be connected to any of the IEEE 1394 ports on the interface board attached to your scanner (any of the ports may be used).



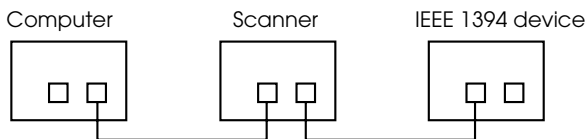
When connecting the scanner to your computer with other IEEE 1394 devices

If IEEE 1394 devices are already connected to your computer, connect the scanner so that it is the last IEEE 1394 device in the chain.



Note:

The IEEE 1394 cable supplied with the optional IEEE 1394 interface board has 2 six pin connectors at each end. If IEEE 1394 devices with four pin connectors are used in a daisy chain or tree, you will need to use a 6:4 converter cable.



Note:

Connect the cable to a vacant IEEE 1394 connector if additional IEEE 1394 devices are to be connected to your scanner.

Installing the scanner software

After installing the interface board as described above, you need to install the scanner software. For details on installing the scanner software, see Chapter 3, “Installing the Software.”

Glossary

additive primary colors

The colors of red, green and blue (RGB) - which give the perception of white when fully added. These are the colors of the color system used with monitors and scanners.

bi-level data

Image data that is composed of 1 bit per pixel. A pixel is represented by a single bit of digital data that can express only 1 (light) or 0 (dark).

bit

Short for binary digit. The smallest unit of data in computer processing. A bit can represent two values: on and off, or 1 and 0.

bit/pixel

The unit that indicates the number of bits allocated for a pixel. The larger the bit value, the more detail of a pixel will be reproduced.

brightness

A scanner function to lighten or darken the output image data.

byte

A unit of information consisting of eight bits. A byte can represent a control code or character.

carriage

A component of the scanner that contains the optical sensor and light source for scanning.

color correction

A method of adjusting the color image data for a particular type of device so that the reproduction results are as close as possible to the original colors.

color separation

A process of converting full-color images into a limited number of primary colors. Additive primary colors (red, green, and blue) are used by the scanner, and the subtractive primary colors (cyan, magenta, and yellow) plus black are used for printing press separation.

daisy chain

A SCSI bus arrangement that allows several devices to be connected simultaneously in a line to a single computer. See *SCSI*.

default

A set of values used when no other selections have been made. These are sometimes called factory defaults if the original values have not been changed since the scanner has left the factory.

dithering

A process in which software or an output device simulates continuous tones with groups of dots.

document

The item, such as a sheet of paper or a book, that is placed on the document table for the scanner to read.

dpi

Short for dots per inch. A unit of measurement for resolution. The higher the value, the higher the resolution.

dropout color

A color the scanner does not recognize and ignores. You can select and deselect dropout colors in the scanner software.

ESC/I

Abbreviation for EPSON Standard Code for Image scanners. A system of commands that allows you to control image scanners from your software.

ESC/P

Abbreviation for EPSON Standard Code for Printers. A system of commands that allows you to control printers from your software.

exposure

A scanner function that lightens or darkens the scanned image data.

grayscale

Images represented with various shades of gray in addition to black and white.

halftoning

A method of reproducing images with patterns of dots to improve the quality of the output.

home position

The position at the rear (nearest the cover hinge position) of the scanner where the carriage rests before a scanning operation.

ICM

Image Color Matching. Windows color management system designed to help you get WYSIWYG (what you see is what you get) color output. This software displays colors on your screen as they exist on the scanned documents, or prints colors as you see them on your screen.

imagesetter

A device that uses computer files to produce high-resolution text and graphics output on film or paper. These are usually found in service bureaus and printing companies.

impact dot printer

A printer that transfers ink onto the paper by striking an ink ribbon with a number of small pins.

ink jet printer

A printer that transfers ink onto the paper by spraying the ink through a number of small nozzles.

interface

A piece of hardware, a method, or a standard used for connection between or among computer devices.

laser printer

A printer that uses a laser and the electrophotographic method to print a full page at a time. The laser is used to “paint” a charged drum with light, to which toner is applied and then transferred onto paper.

line sequence

A type of color scanning that separates primary colors line by line. The carriage makes only one pass.

marquee

A moveable and adjustable frame that marks the area of an image that will be previewed or scanned.

monochrome

Black and white images, or images represented only by the intensity of luminosity.

OCR

Optical Character Recognition. The technology that allows computers to “read” text from physical objects. OCR requires a graphical representation of text to interpret, which usually comes from a scanned image.

page sequence

The type of color scanning in which the entire image is scanned once for each separate color.

pixel

Short for picture element. Each image is composed of a number of pixels. Pixels are also counted in units of dots.

plain bi-level

Bi-level image data without the halftoning process.

port

An interface channel through which data is transmitted between devices.

primary colors

Basic colors. See *additive primary colors* and *subtractive primary colors*.

resolution

Indication of how finely an image is resolved into pixels. Measured in dots per inch (dpi), pixels per inch (ppi), or samples per inch (spi).

scan

An operation performed by the sensor and the carriage. The image is divided into pixels by scanning.

scanning area

The physical size of the image that can be scanned by the scanner.

SCSI

Small Computer System Interface. This is one method used to connect your computer to peripherals such as scanners, hard disk drives, CD-ROM drives, and so on.

SCSI ID

The numbers that all devices in a SCSI connection (see *daisy chain*) use to identify each other. If the same ID number is used by two devices in the same daisy chain, the devices cannot operate properly.

sRGB

A standard color space used as the default color space within the Windows 98 color management system (ICM 2.0).

subtractive primary colors

The colors of cyan, magenta, and yellow (CMY) - which produce black when mixed in certain amounts. In printing, black is often added to give more definition as mixing of actual inks cannot produce pure black.

terminator

A device that stops electronic signals, and prevents them from proceeding or returning to other devices. This is necessary to stop a signal from continuously bouncing between devices.

threshold

A reference point that is used to determine whether data will be processed as "on" or "off". In the case of color image data, "on" means that a certain color will appear in a pixel or dot, and "off" means that color will not appear there.

tone correction

A method of adjusting the tone curve so that the reproduction results on different types of output devices have gradations similar to the original image.

tone curve

The graph that shows the contrast ratio between the input (original image) and output (image data) in image processing.

Index

Numerics

- 24-bit Color (Std), 4-11
- 24-bit Color De-screening, 4-11
- 8-bit Gray (Std), 4-11

A

- AAS, 1-3
- Acquire, 4-8, 6-9
- AC socket, 2-5
- ADF *See* Automatic Document Feeder
- Auto
 - Area Segmentation (AAS), 1-3
- Automatic Document Feeder, 1-9, 6-2
 - ADF-Double-sided, 4-10
 - ADF-Single-sided, 4-10
 - close, 6-6
 - document specifications, 6-16
 - edge guides, 6-7
 - ejected paper support, 6-2
 - feet, 6-3
 - installation screws, 6-2
 - installing, 6-3
 - knob, 6-2
 - loading document, 6-7, 6-8
 - open, 6-8
 - orientation, 6-16
 - paper jams, 6-14
 - precautions, 6-17
 - scanning full document area, 6-9
 - scanning part of document area, 6-10
 - stopper, 6-2
 - unpacking, 6-2

B

- B80834*, 1-9, 6-17
- B80836*, 1-9
- B81321*, 1-9, 6-2
- Button
 - operate, 1-6, 1-8, 2-5, 2-6, 4-2
 - reset, 1-6, 1-8
 - start, 1-2, 1-6, 1-8, 4-7, 4-14, 5-2, 5-3, 5-5

C

- Cable
 - SCSI, 1-4, 2-8, 2-11
- Carriage, 1-6, 2-6
- Chain, daisy, 2-8, 2-10, 2-11, 2-13
- Choosing a place, 2-2
- Close
 - Automatic Document Feeder, 6-6
 - document cover, 4-4
- Color
 - 24-bit Color (Std), 4-11
 - 24-bit Color De-screening, 4-11
- Connecting to
 - another SCSI device, 2-8
 - PC, 2-7
 - SCSI interface, 2-7, 2-8, 2-11
- Connections
 - SCSI, 2-8
- Connector
 - option interface, 6-6
- Copy & Fax, 4-11
- Copyright, 4-2
- Cord, power, 1, 1-4, 2-2, 2-5, 2-12, 6-3, 6-18

D

- Daisy chain, 2-8, 2-10, 2-11, 2-13
- Default SCSI ID, 2-9
- Destination, 4-12
- Document
 - Source, 4-10
- Document, placing, 4-2
- Document cover
 - close, 4-4
 - open, 2-6, 4-2
 - reattach, 4-6
 - remove, 4-5, 6-3
- Document guide strip, 1-4, 1-5, 4-3, 6-3
- Document Source setting, 6-9
- Document specifications (Automatic Document Feeder), 6-16
- Document table, 4-2, 4-3

E

- Edge guides (Automatic Document Feeder), 6-7
- Ejected paper support, 6-2
- EPSON
 - Network Image Express, 1-9
 - PageManager, 3-14, 3-18
 - Scanner Monitor, 4-14
 - Stylus Printer, 4-12
 - TWAIN Pro, 1-2, 3-3, 4-7, 6-9, 6-10
- Error light, 1-6, 1-7

F

- Fax, 4-12
- Flashing
 - fluorescent lamp, 2-6
- Flatbed, 4-10
- Fluorescent lamp, 2-6

I

- IEEE 1394 interface board, 1-9
- Image
 - database, 6-2
 - saving, 4-14
 - scanning, 4-9
 - Type, 4-10
- Important Safety Instructions, 1
- Initialization, 2-6
- Installation
 - Automatic Document Feeder, 6-3
 - IEEE 1394 interface board, 6-18
 - scanner software, 3-3
 - SCSI driver, 2-7
- Installation software, 3-3
 - before, 3-2
- Instructions
 - safety, 1
- Interface, 3-2
 - board, IEEE 1394, 6-17
 - board, SCSI, 1-4, 2-7, 2-11

J

- Jammed paper, 6-14

L

- Lamp, fluorescent, 2-6
- Laser Printer, 4-12
- Left, 6-14
- Light
 - error, 1-6, 1-7
 - operate, 1-6, 1-7
 - ready, 1-6, 1-7, 2-6
- Line Art, 4-11
- LineWork, 4-12
- Loading
 - document (Automatic Document Feeder), 6-7, 6-8
- Lock, transportation, 2-4

N

Non-readable area, 4-3

O

OCR, 1-3, 1-9, 4-11, 4-12, 6-2

Open

Automatic Document Feeder, 6-8
document cover, 2-6, 4-2

Operate button, 1-6, 1-8, 2-5, 2-6, 4-2

Operate light, 1-6, 1-7

Optical Character Recognition (OCR),
1-3, 1-9, 6-2

Option

Automatic Document Feeder, 6-2
interface connector, 6-6

Orientation, 6-16

changing, 6-11

P

PageManager for EPSON, 3-14, 3-18,
4-14, 5-4, 5-5

Paper jams, 6-14

Placing

document, 4-2
scanner, 2-2

Plugging-in, 2-5

Power cord, 1, 1-4, 2-2, 2-5, 2-12, 6-3,
6-18

Power-off sequence, 2-14

Power-on sequence, 2-13

Precautions (Automatic Document
Feeder), 6-17

Prepress, 4-12

Preview window, 4-13

R

Ready light, 1-6, 1-7, 2-6

Removing document cover, 4-5, 6-3

Reset button, 1-6, 1-8

S

Safety information for UK, 3

Safety instructions, 1

Saving scanned image, 4-14

Scan, 4-2, 4-4, 4-14

Scanner, 1-4

Scanner event, 5-3

Scanner Monitor, EPSON, 4-14

Scanners and Cameras, 3-20, 5-3

Scanning, 4-4

Screen/Web, 4-12

SCSI

board, 1-4, 2-7, 2-11

cable, 1-4, 2-8, 2-11

connections, 2-8, 2-11

terminator, 2-8, 2-10, 2-14

SCSI ID

number, 2-9

Select Source, 4-8

Setup, EPSON TWAIN Pro, 3-3

Software

requirements, 3-2

scanner, 3-3

Source, Select, 4-8

Specifications

document (Automatic Document
Feeder), 6-16

Start button, 1-2, 1-6, 1-8, 4-7, 4-14, 5-2,
5-3, 5-5

Switch, terminator, 2-8, 2-10, 2-14

System requirements, 3-2

T

Table, document, 4-2, 4-3

Terminator, 2-8, 2-10, 2-14

TET, 1-3

Text Enhancement Technology (TET),
1-3

Transportation lock, 2-4

Transporting, 2-4

TWAIN Select Source, 4-8

U

Unlocked position, 2-4

Unpacking

Automatic Document Feeder, 6-2
scanner, 1-4

W

Windows

2000, 2-13, 3-6, 3-20

95, 2-13, 3-14, 3-22

98, 2-13, 3-9, 3-20

Millennium Edition, 2-13, 3-3, 3-20

NT 4.0, 3-14, 3-22

EPSON OVERSEAS MARKETING LOCATIONS

Epson America, Inc.

3840 Kilroy Airport Way
Long Beach, CA 90806
Phone: (562) 981-3840
Fax: (562) 290-5220

EPSON UK LTD.

Campus 100, Maylands Avenue,
Hemel Hempstead, Herts,
HP2 7TJ, U.K.
Phone: (+44) 01442 261144
Fax: (+44) 01442 227227

EPSON DEUTSCHLAND GmbH

Zlpicher Stra e 6,
40549 D sseldorf Germany
Phone: (0211) 56030
Fax: (0211) 5047787

EPSON FRANCE S.A.

68 bis, rue Marjolin
92300, Levallois-Perret, France
Phone: 33.1.41.86.26.56
Telex: 610657

EPSON AUSTRALIA PTY. LTD.

70 GIBBES STREET,
CHATSWOOD 2067 NSW.
Phone: 2-9903-9000
Fax: 2-9903-9177

EPSON SINGAPORE PTE. LTD.

No. 1 Temasek Avenue #36-00
Millenia Tower, Singapore 039192
Phone: (065) 33 77 911
Fax: (065) 33 41 185

EPSON HONG KONG LTD.

Rooms 4706-10, 47/F,
China Resources Bldg.,
26 Harbour Road, Wanchai, Hong Kong
Phone: 2585-4300
Fax: 2827-7083

EPSON TAIWAN TECHNOLOGY & TRADING LTD.

10F, No. 287 Nanking E. Road, Sec. 3,
Taipei, Taiwan, R.O.C.
Phone: (02) 717-7360
Fax: (02) 712-9164

EPSON ITALIA S.p.A.

V.le F.lli Casiraghi 427
20099 Sesto S.Giovanni
MI, Italy
Phone: +3902262331
Fax: +39022440750

EPSON IBERICA S.A.

Av. de Roma, 18-26
08290 Cerdanyola del Valles
Barcelona, Spain
Phone: 582. 15.00
Fax: 582. 15.55

**SEIKO EPSON CORPORATION
(Hirooka Office)**

80 Harashinden, Hirooka
Shiojiri-shi, Nagano-ken
399-0785 Japan

EPSON PORTUGAL, S.A.

R. do Progresso, 471, 1 Perafita
4460 Matosinhos, Portugal
Phone: (02) 996 14 02
Fax: (02) 996 14 11

EPSON

Color Image Scanner

EPSON GT-10000+

Setup Guide

Printed in XXXXX
XX.XX-X