

Supplement for Apple iMac Users

This supplement and the enclosed *USB Printer Software for Apple iMac* CD replace pages 21 to 25 of the *Setup and Daily Use* guide and the *Printer Software* CD supplied with your EPSON Stylus COLOR 740 printer.



Caution: Do not use the printer drivers on the Printer Software CD supplied with your printer (they are only for Macintosh and Windows computers). Only use the printer drivers on the USB Printer Software for Apple iMac CD supplied with this supplement.

Setup Your EPSON Stylus COLOR 740 Printer

Follow the instructions in the *Setup & Daily Use* guide supplied with your printer, up to and including page 15, then return to this supplement and start at the section below.

IMPORTANT: If You Are Using Macintosh OS 8.1

If your iMac is using Macintosh OS 8.1, you must install Apple iMac Update 1.0 to use your Stylus COLOR 740. If your iMac is using OS 8.5, you do not need to install this update. See the following sections for information on how to check which version OS your iMac is using and how to install Update 1.0.

Note: After the initial iMac launch Apple recommended every iMac customer install this update which includes improvements to the USB software drivers. The update is included on the CD supplied with supplement and is also available from Apple's software update web site at <http://www.apple.com/support/> or <http://www.apple.com/swupdates>

Check Which Version OS Your iMac is Using

1. From the Apple Menu, select About This Computer...



2. In the About This Computer... window, check the OS version number: 8.1 etc.



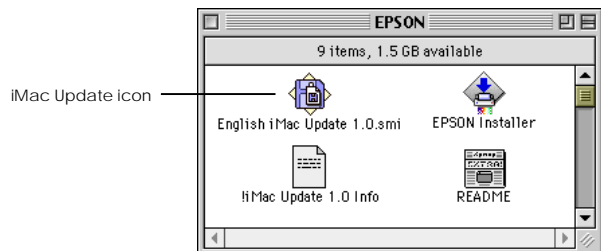
3. If your iMac is using OS 8.1, YOU MUST install Apple iMac Update 1.0. See the next section for instructions.

Installing Apple iMac Update 1.0 (for OS 8.1 only)

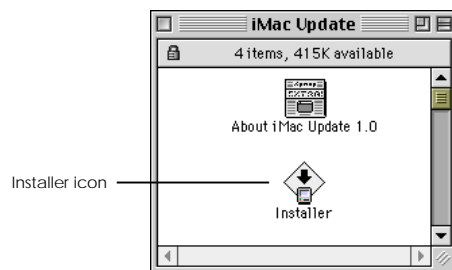


Caution: If your iMac is not using Macintosh OS 8.1, DO NOT INSTALL Apple iMac Update 1.0.

1. With your iMac powered on, insert the *USB Printer Software for Apple iMac* CD supplied with this supplement into your iMac CD-ROM drive and close the drive door. After a few seconds, the EPSON folder will open on your desktop.



2. Double click on the English iMac Update 1.0 icon. The update file will automatically be copied to your iMac desktop and the iMac Update folder will open.
3. Double click on the Installer icon to run the update and follow the on screen instructions. When the update has finished, click Restart to restart your iMac.



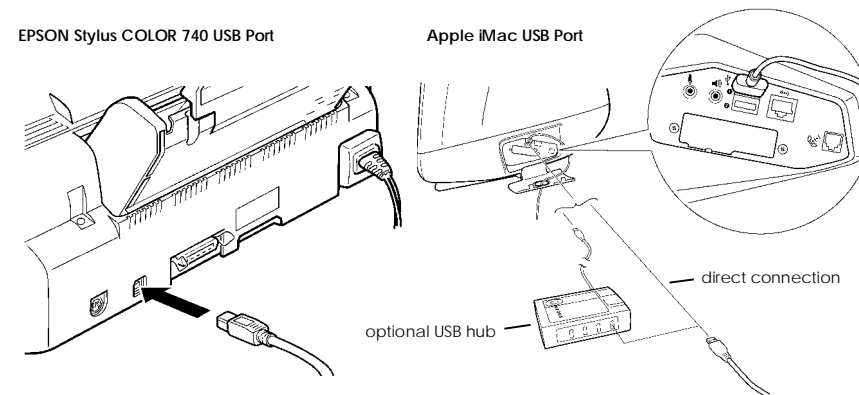
Note: Apple iMac Update 1.0 Software is provided by Apple Computer. If you have problems installing it, see the documentation that came with your computer, contact your computer supplier, or, contact Apple: <http://www.apple.com/support/> or <http://www.apple.com/swupdates>

Connect the USB Cable

1. Make sure your iMac, Stylus COLOR 740 and USB hub (if used) are all switched off.
2. Connect one end of the USB cable to the USB port on the back of your printer and the other end to a free USB port on your iMac. If you are using a USB hub, connect your printer to the first tier of the hub.

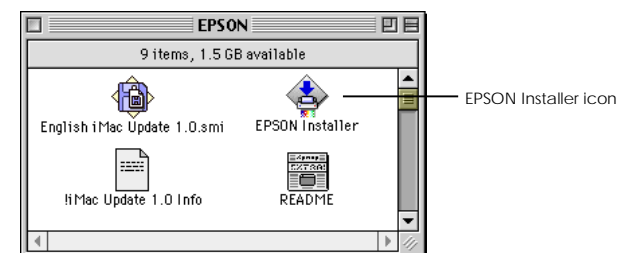
Note:

- Use EPSON USB interface cable code CAEUL0001 available from your EPSON dealer.
- If you have printing problems when your printer is connected via a USB hub, try connecting your printer directly to a USB port on your iMac instead.

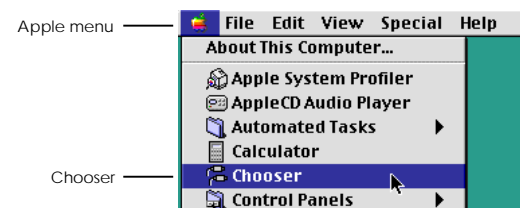


Install the Printer Driver Software

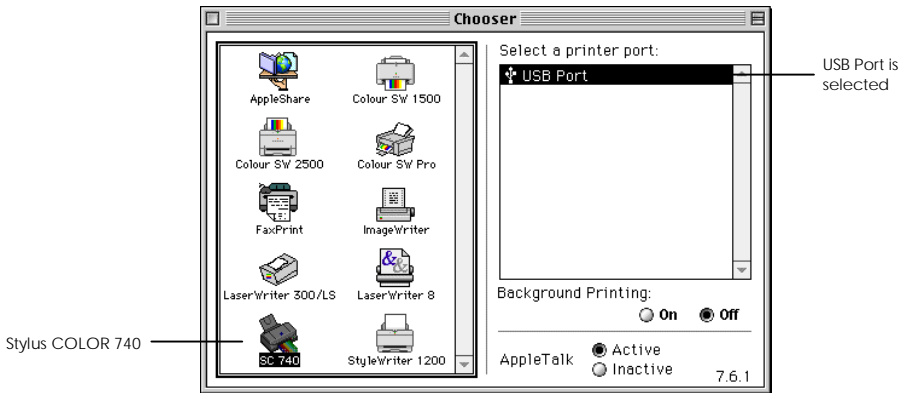
1. Switch on your iMac and wait until your desktop appears before switching on your USB hub (if used) then your printer.
2. Insert the *USB Printer Software for Apple iMac* CD into your iMac CD-ROM drive (if it is not already there) and close the drive door. After a few seconds, the EPSON folder will open on your desktop.



3. Double click on the EPSON Installer icon and follow the on screen instructions to install the printer driver software. When the installation is complete, click Restart to restart your iMac.
4. When your iMac has restarted, open the Chooser from the Apple menu.



5. On the Chooser, select your printer, SC 740, make sure USB is selected as the printer port, then close the Chooser. See overleaf.



You have now installed the printer driver software. Return to the *Setup and Daily Use* guide supplied with your printer and continue on page 26 *Loading Paper*, then page 30 *Printing Your First Page for Macintosh*.

Except for the sections covered by this supplement, sections of the documentation supplied with your printer relating to Macintosh computers are also applicable to Apple iMacs – including Macintosh information on the *EPSON Stylus COLOR 740 Online Guide CD*.

Software for Macintosh computers supplied with your printer in the *EPSON Perfect Picture Pack* can be used on Apple iMac computers.

Tips for iMac Users

1. Your printer software installation may not function correctly and your printer may not print documents correctly if your iMac is using OS 8.1 and you do not update your iMac with Apple iMac Update 1.0 Software. See the first page of this supplement.
2. If your printer does not print, or, if it only prints the first part of your document at the top of the page and then stops:
 - You may have installed the printer driver without following step 1 in the *Connect the USB Cable* and *Install the Printer Driver Software* sections. Follow the procedures again.
 - Try powering on you iMac first and wait until the desktop appears before powering on you USB hub (if used) then printer.
3. If your printer does not work correctly when connected using a hub, connect the printer directly to a USB port on your iMac.
4. If you unplug your printer USB connection while your iMac is switched on, wait a few seconds before plugging it back in, otherwise your iMac may not recognise the printer and you may be unable to print correctly.

World Wide Web

If you can connect to the Internet and have a Web browser, you can access EPSON's web site at <http://www.epson.co.uk>. Here you will find information on the latest EPSON software drivers, EPSON products and answers to frequently asked questions.