

Label Editor Lite User's Guide

EPSON[®]
EXCEED YOUR VISION

For Macintosh



**Read this document carefully to use this product
safely and correctly.**

Introduction

Thank you for purchasing this product.

For your safety, read the attached documents carefully to use the dedicated application software Label Editor Lite correctly.

- This manual describes how to use “Label Editor Lite”. For the settings and operations of this product, refer to this product’s user’s guide.
- This manual assumes your computer is running the English version of Mac OS and that you are able to operate it and understand its basic terms. If you have any questions relating to your computer and operating system, please refer to their specific manuals.
- No part of this manual may be reproduced without prior permission.
- Contents in this manual are subject to change without prior notice.
- Specifications, and design described in this manual are subject to change without prior notice.

Macintosh and Mac OS are trademarks or registered trademarks of Apple Inc. in the United States and other countries.

Other companies or product names used herein are also trademarks or registered trademarks of their respective owners.


Please confirm the software license agreement when installing Label Editor Lite.

Contents


Safety Instructions	1	Creating a Label.....	9
Preparation to use Label Editor Lite	2	How to print	11
Operating environment	2	Using Label Editor Lite Help.....	12
Installing Label Editor Lite and the printer driver.....	2	Printing from Other Applications.....	12
Uninstalling Label Editor Lite and/or the printer driver.....	5	Troubleshooting.....	13
How to Create, Open, and Save a File.....	7		
Creating a new file	7		
Opening a created file.....	8		
Saving the created labels.....	8		
Quitting Label Editor Lite.....	8		


Safety Instructions

For your safety, read the attached documents carefully to use this product correctly. Once you have read the instructions, keep this manual handy for future reference. Items below indicate safety precautions to protect users, their surroundings and their property from possible injury or damage. Precautionary notations are categorised as follows according to personal injury and damage to the equipment if the instructions are ignored or the equipment is misused.


	CAUTION This symbol indicates information that, if ignored, could possibly result in personal injury or physical damage due to incorrect handling.
-----------------------------------------------------------------------------------	--------------------------------------------------------------------------------------------------------------------------------------------------------------


The following describes the definitions and meanings for each symbol used in the precautions.

	This indicates an "Important reminder".
-----------------------------------------------------------------------------------	-----------------------------------------

	This indicates a "Prohibited" item.
-----------------------------------------------------------------------------------	-------------------------------------

	CAUTION
-----------------------------------------------------------------------------------	----------------

	The supplied disc is a data CD-ROM for computers. Do not play it an audio CD player. Otherwise there is a risk to hearing and audio equipment.
-----------------------------------------------------------------------------------	------------------------------------------------------------------------------------------------------------------------------------------------

	Be careful of continuous use of this product, which may cause eye fatigue.
-----------------------------------------------------------------------------------	----------------------------------------------------------------------------

Preparation to use Label Editor Lite

Operating environment

Before installing Label Editor Lite, make sure that your computer satisfies the following requirements.

Operating system	Mac OS X 10.6 Snow Leopard (Use under the recommended specifications for your OS.)
Hard disk space Label Editor Lite uses	Approx. 40MB
Drive	CD-ROM drive
Display	XGA (1024 x 768) or higher
Interface	USB

⚠ Caution

- Mac OS X 10.5 or earlier are not supported.
- Label Editor Lite may not operate normally in computers upgraded to Mac OS X 10.6. Label Editor Lite may also not operate normally depending on the computer environment you use.
- On an emulated environment using an operating system other than Mac OS X, the operations of this product cannot be guaranteed.

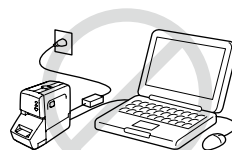
Installing Label Editor Lite and the printer driver

⚠ CAUTION

Do not connect this product to your computer until the installation of the printer driver is complete.

How to connect this product to your computer

📖 This product's user's guide.



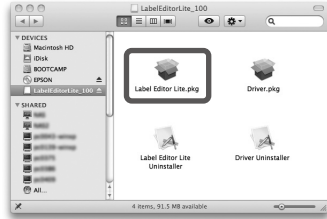
⚠ Caution

- Make sure to install Label Editor Lite as a user with the administrator authority.
- Before installing Label Editor Lite, close all the other applications running on your computer.
- Ensure you install the application and the printer driver in the combination included in the CD-ROM. Label printing is not available in other combinations.
- When connecting two or more products to one computer, change the name of the printer in advance.

- ➊ Turn on your computer and start up Mac OS.
- ➋ Insert the included CD-ROM into the CD-ROM drive on your computer.
- ➌ When the "EPSON" icon appears on the desktop, double click it.

4 Double click “LabelEditorLite_1xx.dmg”.

5 Double click “Label Editor Lite.pkg”.



6 When the confirmation message appears, confirm the content and click [Continue].

MEMO

If a message which says “Label Editor Lite is already installed...” appears, Label Editor Lite is already installed. Click [Yes] to remove it before installation.
To cancel the installation: Click [No].

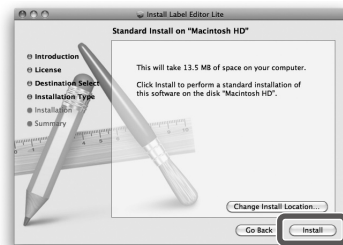
7 When the following window appears, click [Continue].



8 When the license agreement dialogue box appears, confirm the content and click [Continue].

9 The agreement confirmation message appears. Click [Agree].
To cancel the installation: Click [Disagree].

10 Confirm the content and click [Install].

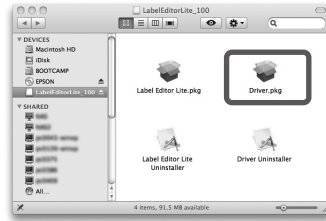


11 When the password dialogue box appears, enter the administrator’s password and click [OK].
Installation starts.

12 When the completion message appears, the installation is complete. Click [Close].

Install the printer driver next.

- 13** Double click “Driver.pkg” in the “LabelEditorLite_1xx” folder.



- 14** When the confirmation message appears, confirm the content and click [Continue].

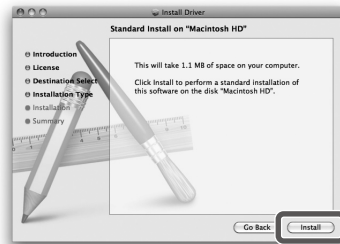
- 15** When the following window appears, click [Continue].



- 16** When the license agreement dialogue box appears, confirm the content and click [Continue].

- 17** The agreement confirmation message appears. Click [Agree].
To cancel the installation: Click [Disagree].

- 18** Confirm the content and click [Install].



- 19** When the password dialogue box appears, enter the administrator’s password and click [OK].
Installation starts.

- 20** When the completion message appears, the installation is complete. Click [Close].

Uninstalling Label Editor Lite and/or the printer driver

⚠ Caution

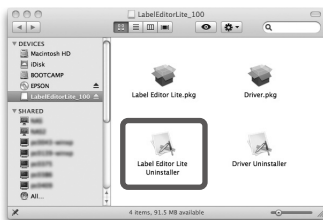
- Make sure to uninstall Label Editor Lite as a user with the administrator authority.
- Before uninstalling Label Editor Lite and/or the printer driver, close all the other applications running on your computer.
To uninstall Label Editor Lite and/or the printer driver, carry out the following procedure using the included CD-ROM.
- When uninstalling the printer driver, disconnect the product from your computer.

1 Insert the included CD-ROM into the CD-ROM drive on your computer.

2 When the “EPSON” icon appears on the desktop, double click it.

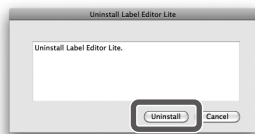
3 Double click “LabelEditorLite_1xx.dmg”.

4 Double click “Label Editor Lite Uninstaller”.



5 Click [Uninstall].

To cancel the uninstallation: Click [Cancel].

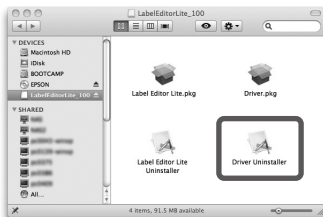


6 When the password dialogue box appears, enter the administrator’s password and click [OK].
Uninstallation starts.

7 Click [OK] on the confirmation message to complete the uninstallation.

Uninstall the printer driver next.

8 Double click “Driver Uninstaller”.



9 Click [Uninstall].

To cancel the uninstallation: Click [Cancel].



10 When the password dialogue box appears, enter the administrator's password and click [OK].

Uninstallation starts.

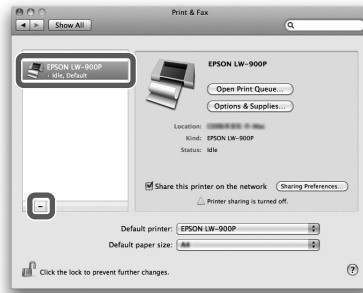
11 Click [OK] on the confirmation message to complete the uninstallation.

Delete the registered printer from the computer next.

**12 From the menu bar or the Dock, select the following menu items.
"System Preferences" - "Printer & Fax"**



13 Select this product from the box on the left and click [-].




14 Click [OK] on the confirmation message.

This product is deleted.

● How to Create, Open, and Save a File

You can check how to operate Label Editor Lite and the useful functions with the Label Editor Lite Help.

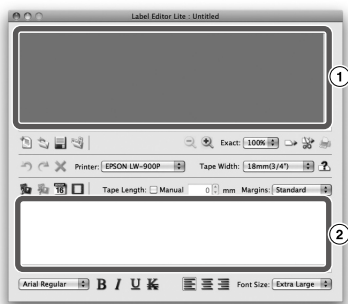
 Using Label Editor Lite Help

Creating a new file

For a new label, configure the tape width first.

① Start Label Editor Lite from the Finder menu bar as follows.






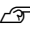
“Go” - “Applications” - “Epson Software” - “Label Editor Lite”
Label Editor Lite starts and the “main screen” appears.



① Preview window


② Text edit area

② On the “main screen”, configure the necessary items.

Printer	Select this product from the list.
Tape Width	Click  and select a tape width for the label to create.
 : Get Tape Width	By clicking this, the tape width of the currently installed tape can be obtained.
 : Wizard	Click this to create a label using a preset format.
 : New	Click this to create a new label.
 : Open...	Opens a created file.  Opening a created file

The Label Editor Lite becomes ready for text entry and editing.

Opening a created file


- 1 On the “Main screen”, select  .
The “Open” dialogue box appears.
- 2 Select the file you want to use, and click [OK].
Text entry and editing to the selected file become available.

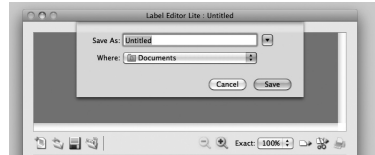


MEMO

You can open it from the menu bar. “File” - “Open...”.

Saving the created labels

- 1 On the “Main screen”, click  .
- 2 The file is saved as either of the following.
Newly created label:
When the Save as dialogue box appears, specify the destination folder and the file name, and click [Save].
Revised label: When clicking [Save], the file will be overwritten.




MEMO

You can save it from the menu bar. “File” - “Save As” / “File” - “Save”

Quitting Label Editor Lite

- 1 Click the red close button  on the top left of the screen.
Label Editor Lite is closed.

MEMO

If the following message appears when the red close button  is clicked, the current data of the “main screen” is not saved yet.
[Save]: Saves the file.
[Don't Save]: Without saving the file, quits Label Editor Lite.
[Cancel]: Returns to the “main screen”.




● Creating a Label

The following describes the basic way to create labels using the label below as an example.

Example:

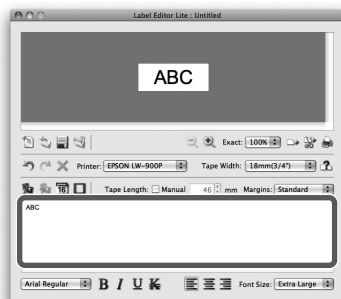


When printing...  How to print

1 Click .

2 Enter text in the text edit area.

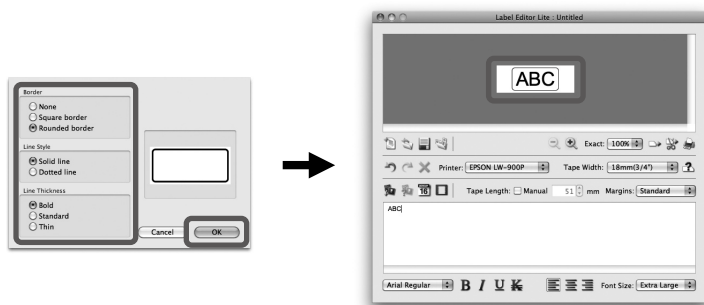
The preview of a new tape appears on the preview window.



3 Click .

When a dialogue box appears, select your choices from the categories and click [OK].

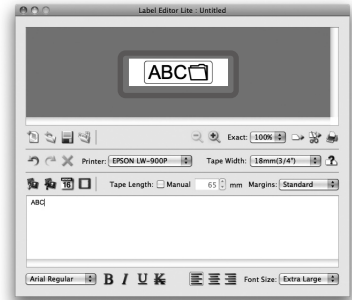
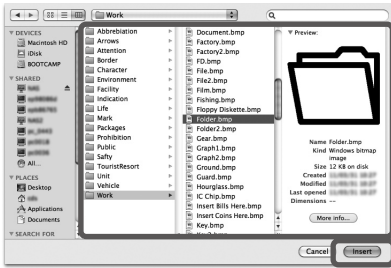
The selected border is inserted in the label.




4 Click .

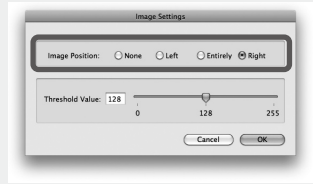
When a dialogue box appears, select an image from the list and click [Insert].

The selected image is inserted in the label.



MEMO

To change the position of the inserted image, click  .
When a dialogue box appears, select your choice.



How to print

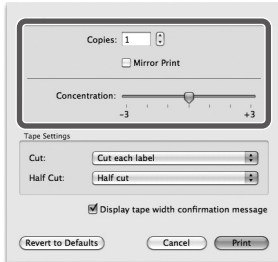
You can check how to operate Label Editor Lite and the useful functions with the Label Editor Lite Help.

 Using Label Editor Lite Help

1 Click .

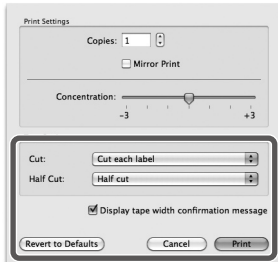
When the print dialogue box appears, configure the necessary items and click [Print]. Printing starts.

Print Settings



Copies	Specify how many copies to print. Up to 100 copies can be specified.
Mirror Print	Turn this item on when printing a mirror image. Use this function for Iron-on transfer labels.
Concentration	Configure the print density. Move the slider to adjust it between -3 and +3.

Tape Settings



Cut	Select from [Cut each label], [Cut after job], or [Don't cut].
[Cut each label]	Cuts the tape after each label is printed.
[Cut after job]	Cuts the tape after all copies are printed.
[Don't cut]	No cutting operation is performed.
Half Cut	Select from [Half cut] or [Don't half cut].
Display tape width confirmation message	Turn on this item to display a confirmation message for the tape width before printing. If not, the message is not displayed.

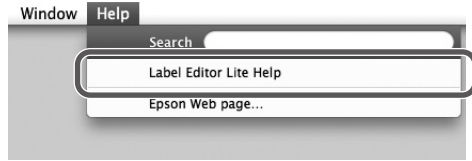
Click [Revert to Defaults] to restore the default settings.

Using Label Editor Lite Help

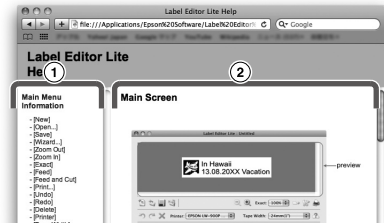
With the Label Editor Lite Help, you can check the functions other than those described in this manual, or when you are at a loss for how to operate Label Editor Lite when creating a label.

1 Open Label Editor Lite Help.

Open it from the menu bar.
"Help" - "Label Editor Lite Help"



2 Click an item you want to know on the menu.



①	Menu	Help items are displayed on the menu.
②	Description	The description of the selected item is displayed.

Printing from Other Applications

This product can be used as a printer. You can create labels by editing data with a commercially available application, and by printing the data with this product. Depending on the applications, printing may not be completed correctly.

1 Specify this product in the printer settings.

2 Make settings for paper.

Specify the width of currently installed tape, the length and margins of the label, etc.

3 Enter text, an image, etc.

Arrange the text and image within the print area.

4 Check the print status with the print preview function.

5 Print the label.

MEMO

- When printing an image
This product prints colour image data in black and white tone.
- Do not use the header or footer.
- Text with too many characters may not fit in the tape width.

Troubleshooting


This section covers problems such as Label Editor Light not starting or printing not completing, and suggests solutions.

Printing does not start

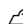
Are there any messages displayed on the computer screen?

Check the content of message.


Is the printer driver installed?

Install the printer driver.  Installing Label Editor Lite and the printer driver

Did you reboot the computer after installing the printer driver?

The printer driver may not be installed correctly unless the computer is rebooted. Re-install the printer driver.  Installing Label Editor Lite and the printer driver

Is the product correctly connected to the computer?

Check the cable connecting the product and the printer.  This product's user's guide

Is the selected printer correct?


If the wrong printer is selected, printing cannot be completed.

Is the printer offline?

If the printer is disconnected or powered off, an offline icon is displayed on the printer dialogue box, and the printer's Dock icon displays a yellow offline tag. Check the cable connection and make sure the printer is plugged into an outlet.

Characters are missing or faint

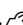
Is the print head dirty?

Clean the print head.  This product's user's guide

Is there any slack in the ink ribbon or tape?

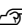
Remove the slack.  This product's user's guide

Are the margin and paper settings correct?

When using commercially available applications, configuration of margins is necessary. Check the current settings. The print can be checked with the print preview function or similar. Be sure to check the preview before printing.  Printing from Other Applications


Printing stops halfway

Check if enough tape remains in the current cartridge.

If the tape has run out, replace the tape cartridge with a new one.  This product's user's guide

Tape is not cut after printing

Is "Don't cut" selected?


Check the setting.  How to Print

Is the cutter blade worn?


The cutter blade may eventually become worn and dull. If so, contact the EPSON customer support centre for further advice.

Half-cut cannot be made correctly

Is the "Half cut" setting enabled?

Check the setting.  How to Print

Is "Don't half cut" selected?

Check the setting.  How to Print

Is the blade for half-cut worn?

The cutter blade may eventually become worn and dull. If so, contact the EPSON customer support centre for further advice.

MEMO

If none of the above has solved the problem or the symptom is other than the above, contact the EPSON customer support centre.



412089800

①

EPSON®
EXCEED YOUR VISION