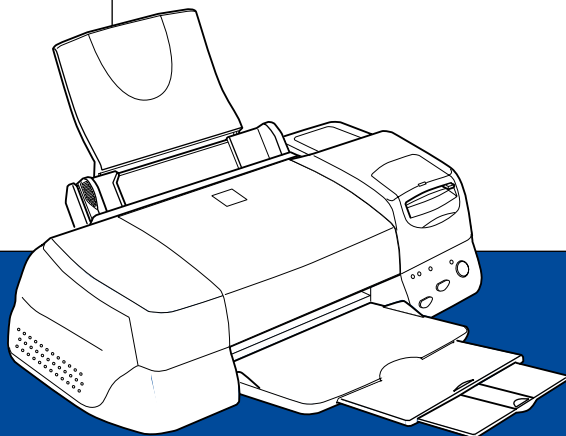


EPSON

Color Ink Jet Printer



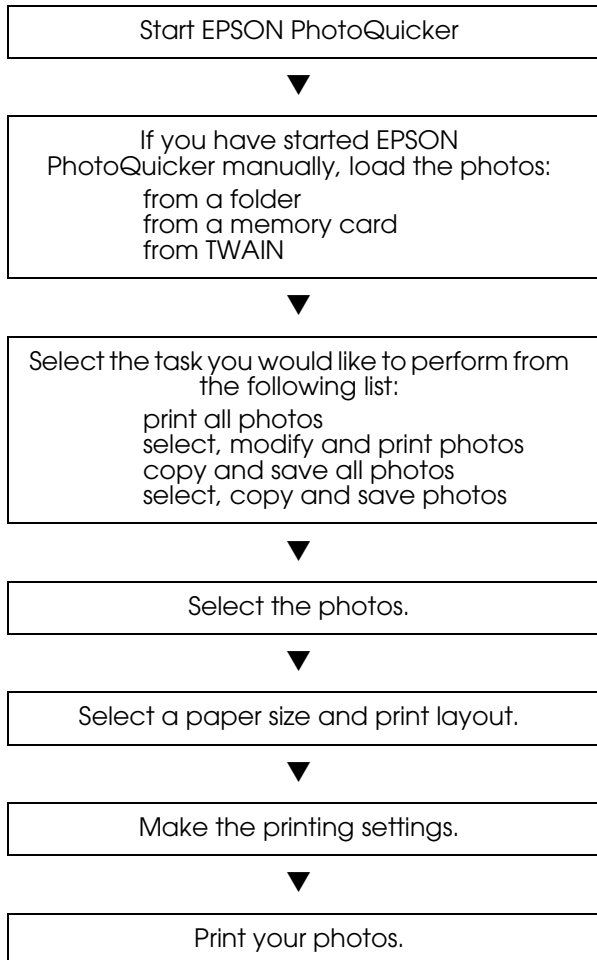
EPSON STYLUS™ PHOTO 875DC

EPSON PhotoQuicker User's Guide

4011923-00
XXX

How to use this guide

This guides provides basic information about EPSON PhotoQuicker and EPSON PhotoStarter. To print your photo data, launch EPSON PhotoQuicker as instructed on page 4 in this guide, then follow the instructions below to print. For detailed information about the software, click the Help button to open online help.



Contents

Introduction to PhotoQuicker	1
Paper	2
Printing with EPSON PhotoQuicker	4
Launching EPSON PhotoQuicker	4
Loading photo data	7
Troubleshooting.....	13
Errors messages	13
Problems loading photo data	18
Problems when Print All is selected	19
Problems during filter processing	19
Problems printing.....	21
Using EPSON PhotoStarter	25
Opening the Startup menu	25
System requirements.....	30

Introduction to PhotoQuicker

EPSON PhotoQuicker lets you print digital photos using a variety of layouts. Photo sizes can be adjusted or rotated with a single mouse click. Add titles or messages to your photos to customize them. The following is a list of the customizing features that are available.

❑ **Paper sizes and types**

A wide variety of paper sizes and types can be used for printing, including A4 and postcard size, photo-cards, and roll paper. By printing on different kinds of paper, you can create professional looking photographs and albums.

❑ **Layouts**

A variety of layouts are available, including index prints. Using layouts is simple—just select from the layout images displayed on screen.

❑ **Photo rotation**

Photos can be rotated with a single mouse-click so that they are oriented correctly. This can be useful when you have a number of pictures with different orientations.

❑ **Titles**

Words and phrases, or the date and time that your photo was taken, can be added to your photos. Add messages to photos intended as gifts to personalize them.

❑ **Photo enhancement**

The image quality of photos can be improved by enhancing the color level, contrast, and color balance. The Automatic Enhancement feature lets you enhance photos without requiring any technical knowledge of image processing. Or, a variety of simple buttons let you adjust the color level and brightness manually.

❑ **Effects**

A variety of interesting effects can be applied to photos, and then saved with the photo. This feature is useful when designing projects that use photos.

Paper

Various paper sizes and paper types can be used. Please refer to the appropriate section.

Paper sizes

Four different paper sizes are available when using EPSON PhotoQuicker to print photos: Letter, Photo card 4"× 6", Photo Stickers, and 100-mm width roll paper. By combining different paper sizes with various layouts, you can create original and professional looking photos in varying formats.

Fixed Size and Free Size roll paper layouts

When printing on roll paper, you can specify both Fixed Size and Free Size layouts. The Fixed Size layout automatically resizes the photo to the selected layout size, regardless of the ratio of length to width in the original photo. The Free Size layout preserves the original photo's ratio of length to width. Consequently, there may be differences in the amount of roll paper used for each photo, depending on the size of the photo. When Free Size is selected, you can specify that either the length or the width of the printout be fixed.

Paper types

A variety of media is available for your printer and photo images. The type of paper you use will have a great effect on the finished product. For more information, see your *Daily Use* guide or the online *Reference Guide*.



Caution:

- ❑ *Make sure that the paper, with the exception of standard industrial paper, is used under normal room-temperature conditions (temperature 15 to 25°C, humidity 40 to 60%).*

- ❑ *Do not touch the printing surface of the paper. Water or grease from your fingers may affect the quality of the print-out.*

Printing with EPSON PhotoQuicker

This section describes how to print with EPSON PhotoQuicker.

Launching EPSON PhotoQuicker

EPSON PhotoQuicker launches automatically when a memory card is inserted into the printer. You can also start EPSON PhotoQuicker manually. Please refer to the appropriate section below for details.

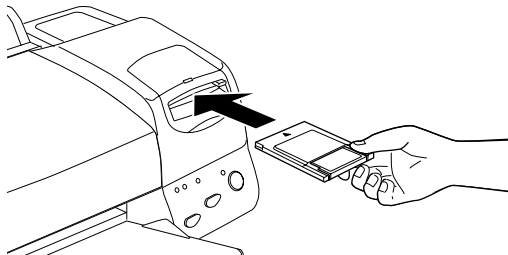
Note:

You can only use memory cards and PC card adapters that are based on PCMCIA ATA standards (Memory Card ATA standards) with this printer. For details about PCMCIA ATA standards, please see the manual packaged with your memory card or PC card adapter, or contact the manufacturer.

Automatic launch

When you insert a memory card into the printer, EPSON PhotoQuicker launches automatically and loads the photo data from the card. Follow the steps below to launch EPSON PhotoQuicker automatically.

1. Make sure that the printer and the computer are turned on.
2. Insert the memory card into the printer's card slot. EPSON PhotoQuicker launches automatically and loads the photo data from the card.





Caution

When loading photo data that is stored on floppy or magneto optical (MO) disks, do not remove the disk from the drive until all tasks have been completed, including printing and copying.

Note:

- ❑ *Launch EPSON PhotoQuicker manually when you want to load photo data that is saved on your hard drive or on disk, or when scanners or other TWAIN equipment are connected.*
- ❑ *You can configure EPSON PhotoQuicker so that it does not launch automatically when a memory card is inserted. For instructions, see the next section, "Manual launch".*

Manual launch

When you want to load photo data that is saved on your hard drive or on disk, or when scanners or other TWAIN equipment are connected, you may want to start EPSON PhotoQuicker manually. Follow the steps below to launch EPSON PhotoQuicker manually.

For Windows

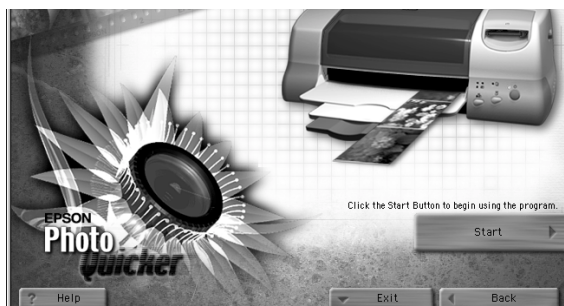
1. Click the Start button, point to Programs and then EPSON PhotoQuicker, then click EPSON PhotoQuicker. The application will open and display the Start screen.

2. On the Start screen, click Start. A dialog box will open where you can specify the location of the data you wish to use.



For Macintosh

1. Double-click the Macintosh HD icon, then double-click the folder in which EPSON PhotoQuicker has been installed. Double-click the EPSON PhotoQuicker icon. The application will open and display the Start screen.
2. Click Start. A dialog box will open where you can specify the location of the data you wish to use.



To print your photos, refer to the online help for instructions.

Note:

We recommend launching EPSON PhotoQuicker automatically when photo data is loaded from a memory card. For instructions, see “Automatic launch” on page 4.

Loading photo data

Once EPSON PhotoQuicker has been launched, you can access photo data in the application using any of the following methods.

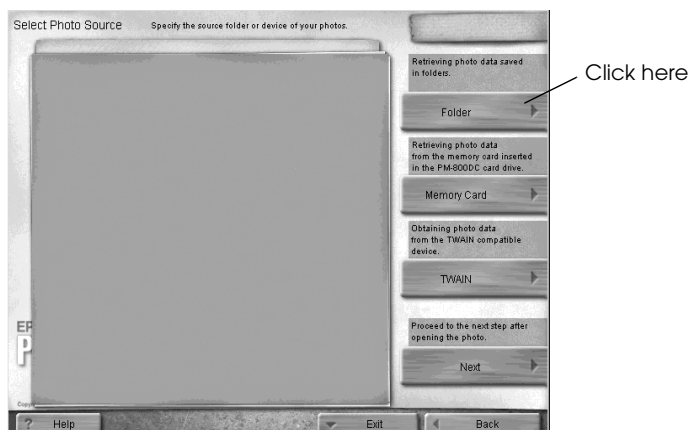
- ❑ Loading data stored on disk
- ❑ Loading data stored on a memory card
- ❑ Loading data from TWAIN-compliant equipment

To print your photos after accessing the photo data in EPSON PhotoQuicker, refer to the online help for instructions.

Loading data stored on disk

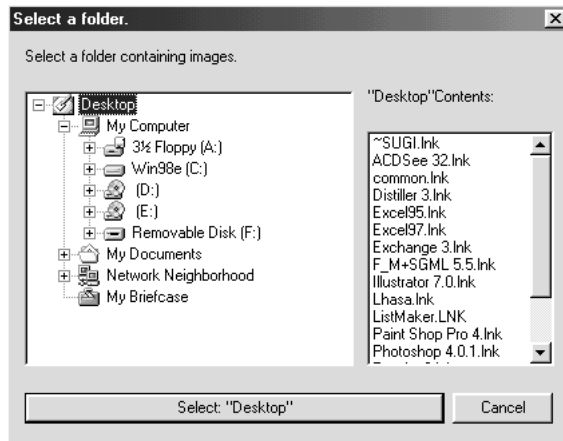
To access photo data stored on your hard drive or on disk, follow the steps below.

1. Manually launch EPSON PhotoQuicker. For details, refer to “Manual launch” on page 5 of this guide. The Select Photo Source dialog box appears.

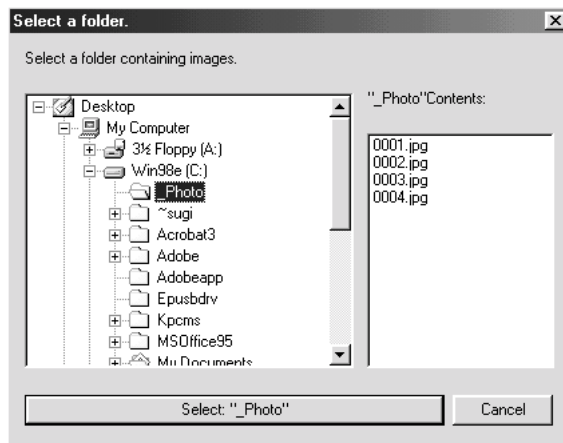


2. Click Folder. The Select a Folder dialog box appears.

3. In the left-hand window, specify the folder that contains the photo data. The files contained in the specified folder are displayed in the right-hand window.



4. Click the Select: "XXXXXX" button, where XXXXXX refers to the name of the selected folder. The photo data will load in EPSON PhotoQuicker. A dialog box appears where you can specify which task is to be performed.





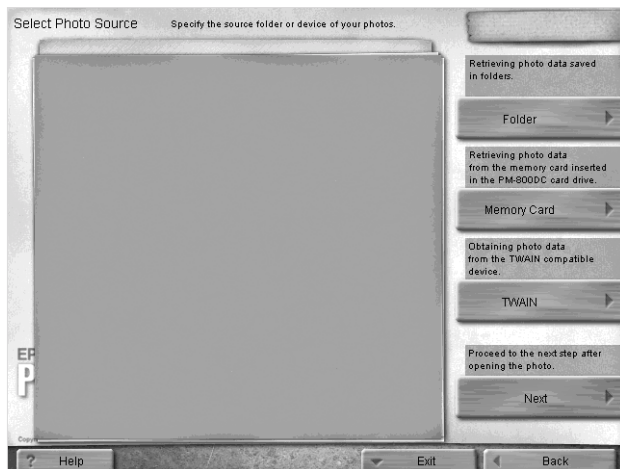
Caution:

When loading photo data that is stored on floppy or magneto optical (MO) disks, do not remove the disk from the drive until all tasks have been completed, including printing and copying.

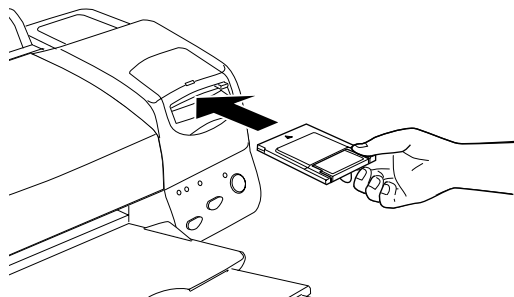
Loading data stored on a memory card

To access photo data stored on a memory card, follow the steps below.

1. Turn in the printer.
2. Manually launch EPSON PhotoQuicker. For details, refer to “Manual launch” on page 5 of this guide. The Select Photo Source dialog box appears.



3. Insert the memory card into the printer's memory card slot.



4. Click Memory Card in the Select Photo Source dialog box to load the photo data.

Note:

- We recommend launching EPSON PhotoQuicker automatically when the photo data is stored on a memory card. To configure EPSON PhotoQuicker to launch and load the photo data automatically when a memory card is inserted, see “Automatic launch” on page 4.*
- Macintosh users should always drag the memory card icon from the desktop into the trash to eject the card.*



Caution:

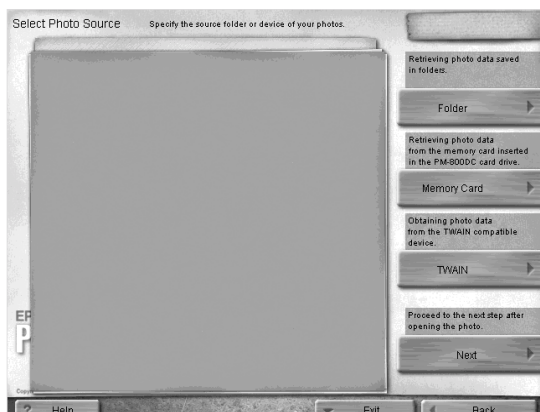
When loading photo data which is stored on a memory card, do not remove the card from the slot until all tasks have been completed, including printing and copying.

Loading data from TWAIN-compliant equipment

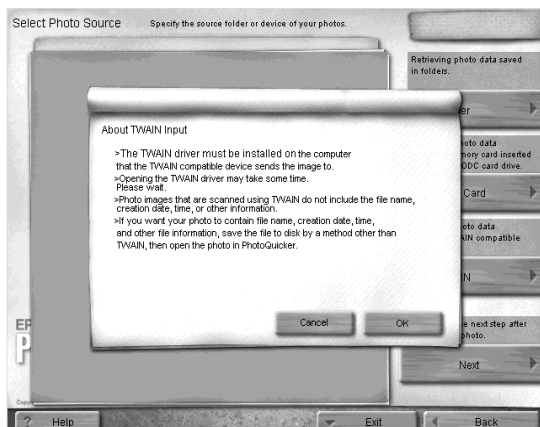
To access photo data from scanners and other equipment that complies with TWAIN standards, follow the steps below.

1. Make sure that the TWAIN device is connected to the computer and, if necessary, ensure that the photo to be scanned is placed correctly.

2. Manually launch EPSON PhotoQuicker. For details, refer to “Manual launch” on page 5 of this guide. The Select Photo Source dialog box appears.



3. Click TWAIN. A description of TWAIN and various precautions will be displayed.

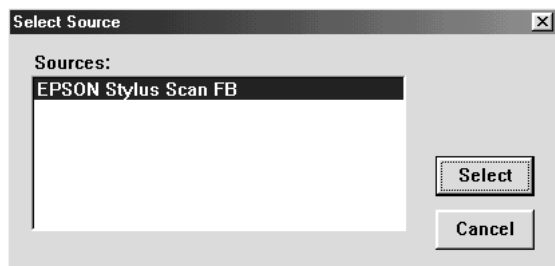


4. After reading the description, click OK. The connected TWAIN device will be displayed in the dialog box.

Note:

To cancel loading, click Cancel.

5. Click the TWAIN device from which the photo data will be obtained, and then click Select. The TWAIN driver appears.



Note:

The dialog box which is displayed will vary depending on which TWAIN driver is installed.

6. Follow the on-screen instructions, and then click LOAD. The photo data will load.

Troubleshooting

Refer to the appropriate section if you encounter any problems using EPSON PhotoQuicker.

Errors messages

If error messages are displayed during operation, follow the appropriate instructions below to correct the problem.

Error messages	Cause	Solution
Unable to find the file.	The photo file has been moved or deleted during loading.	Restart EPSON PhotoQuicker.
Unable to create a file.	The floppy disk or MO to be written to is locked.	Close EPSON PhotoQuicker, unlock the disk, and then restart EPSON PhotoQuicker.
Unable to open the file.	The photo file has been moved or deleted during loading.	Restart EPSON PhotoQuicker.
	The floppy disk or MO to be written to is locked.	Close EPSON PhotoQuicker, unlock the disk, and then restart EPSON PhotoQuicker.
Unable to write to the file.	The photo file has been moved or deleted during loading.	Restart EPSON PhotoQuicker.
	The floppy disk or MO to which the data is to be saved is locked.	Close EPSON PhotoQuicker, unlock the disk, and then restart EPSON PhotoQuicker.
Insufficient free disk space on the disk.	There is insufficient space on the start-up disk.	Increase the amount of space on the start-up disk.
	There is insufficient space on the disk to save the data.	Save the data to a disk with sufficient space.

Error messages	Cause	Solution
Unable to complete the operation due to insufficient memory.	There is insufficient memory.	Install sufficient memory and try again.
Unable to output an image.	There is insufficient memory.	Install sufficient memory and try again.
	An incorrect output destination was specified.	Specify a correct output destination and try again.
Unable to create the object.	There is insufficient memory.	Install sufficient memory and try again.
There is insufficient memory, or the file cannot be found.	There is insufficient memory.	Install sufficient memory and try again.
	An unreadable file exists (this usually means that the required file has been moved or deleted).	Restart EPSON PhotoQuicker.
Unable to save the default.	The floppy disk or MO to be written to is locked.	Close EPSON PhotoQuicker, unlock the disk, and then restart EPSON PhotoQuicker.
	There is insufficient space on the disk to save the data.	Save the data to a disk with sufficient space.
Unable to save the Settings Menu information that was input.	The floppy disk or MO to be written to is locked.	Close EPSON PhotoQuicker, unlock the disk, and then restart EPSON PhotoQuicker.
	There is insufficient space on the disk to save the data.	Save the data to a disk with sufficient space.
You must type a name for the settings.	A name was not entered before OK was clicked.	Type a name and click OK.

Error messages	Cause	Solution
An error occurred while processing the settings data.	The settings have been registered, but the data was not saved (it is possible that the file was moved or deleted).	Re-install EPSON PhotoQuicker.
Unable to save the settings data.	The floppy disk or MO to be written to is locked.	Close EPSON PhotoQuicker, unlock the disk, and then restart EPSON PhotoQuicker.
	There is insufficient space on the disk to save the data.	Save the data to a disk with sufficient space.
Unable to delete the settings data.	The settings have been registered, but the data was not saved or the data file was not found.	Re-install EPSON PhotoQuicker.
Unable to load the settings data.	The settings have been registered, but the data was not saved or the data file was not found.	Re-install EPSON PhotoQuicker.
Unable to input an image.	There is insufficient memory. It is not possible to copy the image file.	Confirm that there is sufficient memory and then try again.
	An attempt has been made to load a non-saved image file.	Restart EPSON PhotoQuicker.
Unable to find the layout data file.	The specified file was not found.	Re-install EPSON PhotoQuicker.
Unable to process printing.	An error occurred with the printer or the OS.	Restart the computer, unplug the printer and then plug it back in, then try again.
An incorrect printer is specified.	A printer other than STYLUS PHOTO 875DC is selected in the Chooser (for Macintosh) or in the printer setup (for Windows).	Specify an appropriate printer.

Error messages	Cause	Solution
Unable to find the specified object.	If the memory capacity of your computer is small, you may require more memory.	Install sufficient memory and then try again.
Unable to save the paper settings information.	The floppy disk or MO to be written to is locked.	Close EPSON PhotoQuicker, unlock the disk, and then restart EPSON PhotoQuicker.
	The destination folder has been moved or deleted.	Re-install EPSON PhotoQuicker.
Unable to open the label file.	The file is damaged.	Check the file to be loaded.
	There is insufficient memory.	Install sufficient memory and then try again.
An error occurred while saving the file.	The floppy disk or MO to which the data is to be written to is locked.	Unlock the disk and try again.
	A file that cannot be overwritten exists.	Modify the destination file settings.
	There is insufficient memory.	Install sufficient memory and then try again.
Error obtaining photo data: Unable to obtain photo data. Press the OK button.	The file cannot be loaded (for example, this may occur if an image has a resolution of less than 320 X 320 pixels).	Click the OK button, select an acceptable image file, and try again.
	The memory card is not inserted correctly in the printer's memory card slot or the cable is not connected properly.	Click the OK button, confirm that the memory card is inserted correctly and the cable is properly connected, then try again.

Error messages	Cause	Solution
<p>The driver cannot be found, or the memory card may not be inserted. Press the OK button and perform the operation again.</p>	<p>The memory card driver is not installed.</p>	<p>Click the OK button and then install the memory card driver.</p>
<p>Check Printer Settings: A printer is not selected, or a compatible printer cannot be found.</p>	<p>STYLUS PHOTO 875DC is not selected in the Chooser (for Macintosh) or printer settings (for Windows).</p>	<p>Select STYLUS PHOTO 875DC as the printer.</p>
	<p>The printer driver is not installed (in Windows).</p>	<p>Install the printer driver.</p>
<p>Check Printer Settings: The currently selected printer is not compatible. The Automatic Print Setting and the Simple Print Setting cannot be used.</p>	<p>A print job has begun using a printer other than the STYLUS PHOTO 875DC, and an attempt to set up the simple print parameters has been made.</p>	<p>Select STYLUS PHOTO 875DC in the Chooser (for Macintosh) or printer settings (for Windows) and try again.</p>
		<p>Use the Manual Print settings for the print parameters.</p>
<p>Check Printer Settings: The currently selected printer is not compatible. The selected layout may not be printed correctly.</p>	<p>An attempt was made to print with a roll paper layout using a printer other than the STYLUS PHOTO 875DC.</p>	<p>Select STYLUS PHOTO 875DC in the Chooser (for Macintosh) or printer settings (for Windows) and try again.</p>
		<p>Use the Manual Print settings for the print parameters.</p>
<p>The available space on the spool disk may be insufficient. Waiting for the required space to become available on the disk.</p>	<p>Insufficient disk space for printing.</p>	<p>Create sufficient disk space by emptying the Trash or Recycle Bin, and then try again. Restart EPSON PhotoQuicker if this does not resolve the problem.</p>

Problems loading photo data

Cannot load photo data

Cause	Solution
The photo data is not saved on the memory card.	Take the photo again. See your digital camera manual for details.
The memory card is not inserted into the printer's memory card slot correctly.	Insert the memory card correctly into the printer's slot. For details, see the <i>Daily Use Guide</i> .
The photo data does not exist in the specified location.	<p>Make sure that the format of the file in the specified location is supported by EPSON PhotoQuicker.</p> <p>Make sure that the connected scanner complies with TWAIN standards. For more details, see your scanner manual.</p>
The memory card is damaged.	Use a new memory card. For more details, see your digital camera manual.
Insufficient space on the computer's hard disk or insufficient memory.	Free up sufficient space for EPSON PhotoQuicker to operate, or install more RAM.
The number of pixels contained by the photo being loaded is too small or too large.	EPSON PhotoQuicker supports pixel counts between 321×321 and $20,000 \times 15,000$. Photos with a pixel count of less than 321×321 cannot be loaded. When loading images with a pixel count of $20,000 \times 15,000$ on a Macintosh, it is necessary to increase the amount of memory allocated to EPSON PhotoQuicker.

Problems when Print All is selected

The number of copies to be printed cannot be specified.

Cause	Solution
Print All is selected in the Select a Job dialog box. The number of copies to be printed cannot be specified when Print All is selected.	Change the setting to Select, Modify and Print and try again.

The filter processing menu cannot be displayed on-screen.

Cause	Solution
Print All is selected in the Select a Job dialog box. Photo processing (filter setup) is not possible when Print All has been selected.	Change the setting to Select, Modify and Print and try again.

Problems during filter processing

The specified filter was not applied to the image.

Cause	Solution
Incorrect filter settings were made.	Make sure the filter settings are correct, and then click Set Filter (Apply to this photo) or Set Filter (Apply to all photos).

The effect of a filter differs between photos.

Cause	Solution
EPSON PhotoQuicker performs optimum processing on each individual photo in accordance with pixel counts and print sizes.	Manually fine-adjust the filter for each photo while observing the effect.
Automatic adjustment and recorded color enhancement are performed automatically, using the optimum settings for each individual photo.	Manually fine-adjust the filter for each photo while observing the effect.

The effect of a filter differs from what was specified on the filter setup screen.

Cause	Solution
Automatic Adjustment has been selected as the Simple Print setting.	Select None as the Simple Print setting when setting up the filter.
The actual printout may differ from the image displayed on screen owing to a different display resolution for the filter sharpness, paint and texture functions.	Manually adjust the filter for the photo while observing the effect.

Problems printing

It is not possible to print a filter-processed photo.

Cause	Solution
The processed photo has not been set up to print.	Click the Number of Prints tab on the Select Photos screen, and then click the photo to be printed.

The orientation of photos is not uniform.

Cause	Solution
The orientation of the digital camera was different when the photos were taken.	On the Optional Settings menu, click the Rotate tab, then click the photo to be rotated.

The size of the printed image exceeds the size of the paper, and some portions of the image have been lost.

Cause	Solution
Oversize Print is selected as the Print Size Adjustment setting.	Click Trimming Guide Settings on the Optional Settings menu and select Exact Size Print or Fit to Print as the Print Size Adjustment setting.

A white border exists at the top and bottom, or left and right sides, of the photo.

Cause

Solution

Reduce Without Trimming is selected as the Print Size Adjustment setting.

Click Trimming Guide Settings on the Optional Settings menu and select Standard Trimming as the Print Size Adjustment setting.

A white border exists around the edges of the postcard after printing.

Cause

Solution

Undersize Print is selected as the Print Size Adjustment setting on the Trimming Guide Settings menu.

Cut around the edge after printing, or click Trimming Guide Settings on the Optional Settings menu and select Oversize Print as the Print Size Adjustment setting.

A white border exists around the edges of the postcard after printing.

Cause

Solution

Undersize Print is selected as the Print Size Adjustment setting on the Trimming Guide Settings menu.

Cut around the edge after printing, or click Trimming Guide Settings on the Optional Settings menu and select Oversize Print as the Print Size Adjustment setting.

The Simple Print settings are not available.

Cause	Solution
The STYLUS PHOTO 875DC is not selected as the default printer.	Select STYLUS PHOTO 875DC printer in the Chooser (for Macintosh) or in the printer settings (for Windows).

Some Print Size Adjustment and Photo Cutting Guide settings cannot be made on the Trimming Guide Settings menu.

Cause	Solution
Depending on the paper size and print layout settings made on the Select a Layout menu, certain Trimming Guide settings may be unavailable.	Change the paper size and print layout settings.

The photo information cannot be displayed or printed.

Cause	Solution
The photo data has been loaded from a TWAIN device.	It is not possible to display or print photo information in this situation.
The photo information was not registered in the photo file when the photo was taken.	It is not possible to display or print photo information in this situation.

The page information cannot be printed.

Cause

Solution

When using roll paper, a selection other than Index has been specified as the print layout setting on the Select a Layout menu.

Index must be selected as the print layout setting in order to print the page information when printing with roll paper.

Using EPSON PhotoStarter

EPSON PhotoQuicker is accompanied by EPSON PhotoStarter software which controls the application startup. This software launches at system startup and detects whether a memory card is inserted in the printer's memory card slot. If there is a memory card present, PhotoStarter automatically launches EPSON PhotoQuicker and loads the photo data.

Under normal circumstances, it is not necessary to be familiar with this software. However, it is possible to configure EPSON PhotoStarter so that EPSON PhotoQuicker does not launch automatically when a memory card is inserted. You can also configure EPSON PhotoStarter to display the Initialization Selection dialog box at system startup, allowing you to launch an application other than EPSON PhotoQuicker.

Note:

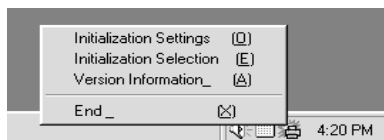
EPSON PhotoStarter is automatically launched at system start up.

Opening the Startup menu

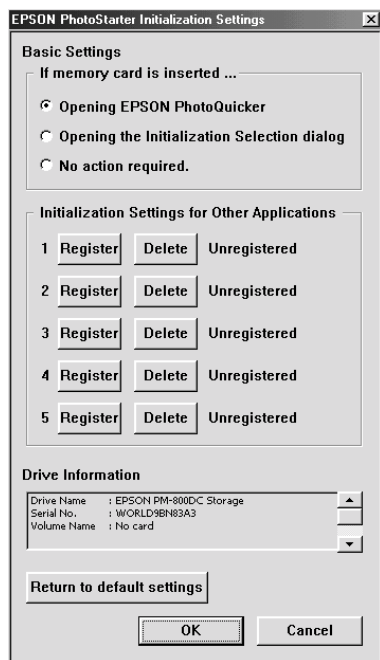
Follow the instructions in this section to open the Startup menu, where you can access the various EPSON PhotoStarter dialog boxes.

For Windows

Right-click the EPSON PhotoStarter icon  located on the task bar, then click Initialization Settings.



The Initialization Settings dialog box is displayed.



For Macintosh

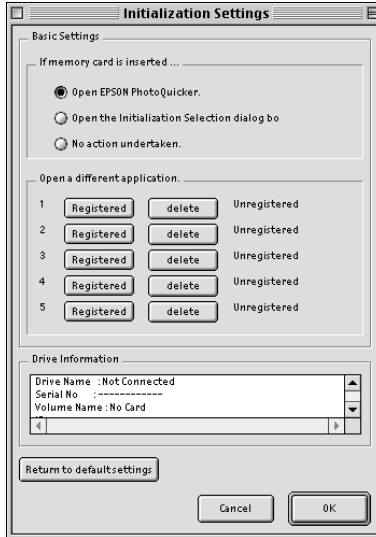
1. Click the Application menu at the right side of the menu bar on your desktop, and then click EPSON PhotoStarter from the menu that appears.



2. Click Initialization Selection.



3. Click Settings in the Initialization Selection dialog box. The Initialization Settings dialog box is displayed.



Registering applications

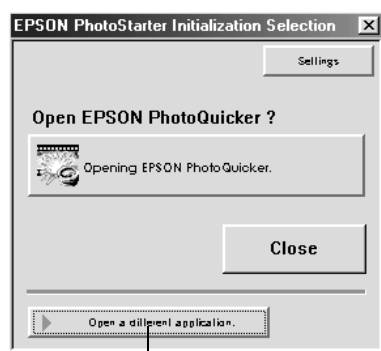
Follow the instructions in this section to register applications and have them appear in the Initialization Selection dialog box.

1. Click the first available Register button in the Initialization Settings dialog box.
2. Select the application software to be registered, and then click Open.

3. Repeat steps 1 and 2 until all of the applications you wish to launch from the Initialization Selection dialog box are registered.

Making the Initialization Settings dialog box settings

If Opening the Initialization Selection dialog is selected under Basic Settings on the Initialization Settings menu, the Initialization Selection dialog box will be launched when a memory card is inserted in the printer's memory card slot. From the Initialization Selection dialog box, you can choose which application to launch.



Click here to open an application other than EPSON Photo Quicker.


Note:

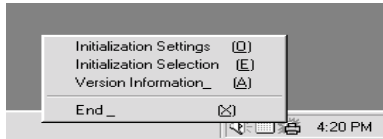
- ❑ *Applications must be registered in the Initialization Settings dialog box in order to launch them from the Initialization Selection dialog box.*
- ❑ *Click Settings in the Initialization Selection dialog box to display the Initialization Settings dialog box.*

Closing EPSON PhotoStarter

Follow the instructions in this section to close EPSON PhotoStarter.

For Windows

Right-click the EPSON PhotoStarter icon  on the task bar, and then click End on the menu that appears.



For Macintosh

1. Click the Application menu at the right side of the menu bar on your desktop, and then click EPSON PhotoStarter from the menu that appears.
2. Click Quit on the File menu.



EPSON PhotoStarter closes.

Note:

Once EPSON PhotoStarter has been closed, EPSON PhotoQuicker will not launch when a memory card is inserted.

System requirements

Item	Windows	Macintosh
Operating system	Windows 98	Mac OS 8.5.1 or higher and USB Print Driver 1.1 or higher
Hardware model	DOS/V system equipped with a standard USB interface. A sound-blaster or compatible sound card is required to reproduce sound.	PowerPC equipped with a standard USB interface (PowerPC G3 266 MHz or higher recommended)
CPU	Pentium 166 MHz or higher (Pentium II 266 MHz or higher recommended)	
Memory	64 MB or higher when handling images of three million pixels or more (128 MB or higher recommended)	42 MB or higher when handling images of three million pixels or more (128 MB or higher recommended)
Display	SVGA (800 × 600) 16-bit color or higher	SVGA (800 × 600) 32,000 colors or higher
Hard disk	Installation: 70 MB or more free space Operation: 220 MB or more free space when handling images of three million pixels	Installation: 70 MB or more free space Operation: 220 MB or more free space when handling images of three million pixels
CD-ROM Drive	Required	Required

EPSON OVERSEAS MARKETING LOCATIONS

EPSON AMERICA, INC.

20770 Madrona Ave.
P.O. Box 2842
Torrance, CA 90509-2842
Phone: (800) 922-8911
Fax: (310) 782-5220

EPSON UK LTD.

Campus 100, Maylands Avenue,
Hemel Hempstead, Herts,
HP2 7TJ, U.K.
Phone: (+44) 01442 261144
Fax: (+44) 01442 227227

EPSON DEUTSCHLAND GmbH

Zülpicher Straße 6,
40549 Düsseldorf Germany
Phone: (0211) 56030
Fax: (0211) 5047787

EPSON FRANCE S.A.

68 bis, rue Marjolin
92300, Levallois-Perret, France
Phone: 33.1.40.87.37.37
Telex: 610657

EPSON AUSTRALIA PTY. LTD.

70 GIBBES STREET, CHATSWOOD 2067 NSW.
Phone: 2-9903-9000
Fax: 2-9903-9177

EPSON SINGAPORE PTE. LTD.

No. 1 Temasek Avenue #36-00
Millenia Tower, Singapore 039192
Phone: (065) 33 77 911
Fax: (065) 33 41 185

EPSON HONG KONG LTD.

Rooms 4706-10, 47/F,
China Resources Bldg.,
26 Harbour Road, Wanchai, Hong Kong
Phone: 2585-4300
Fax: 2827-7083

EPSON TAIWAN TECHNOLOGY & TRADING LTD.

10F, No. 287 Nanking E. Road, Sec. 3,
Taipei, Taiwan, R.O.C.
Phone: (02) 717-7360
Fax: (02) 712-9164

EPSON ITALIA S.p.A.

V.le F.lli Casiraghi 427
20099 Sesto S.Giovanni
MI, Italy
Phone: 2-262331
Fax: 2-2440750

EPSON IBERICA S.A.

Av. de Roma, 18-26
08290 Cerdanyola del Valles
Barcelona, Spain
Phone: 582. 15.00
Fax: 582. 15.55

**SEIKO EPSON CORPORATION
(Hirooka Office)**

80 Harashinden, Hirooka
Shiojiri-shi, Nagano-ken
399-0785 Japan

EPSON PORTUGAL, S.A.

R. do Progresso, 471, 1º Perafita
4460 Matosinhos, Portugal
Phone: (02) 996 14 02
Fax: (02) 996 14 11

EPSON

Color Ink Jet Printer

EPSON STYLUS™ PHOTO 875DC

EPSON PhotoQuicker User's Guide

Printed in Japan
00.XX-XX