

SC-T5400 Series / SC-T5400M Series SC-T3400 Series / SC-T3400N Series

Operator's Guide


This guide contains selected information on how to use the printer and frequently used features of the printer. See the User's Guide (online manual) for detailed instructions on using the printer.

| | |
|---|----|
| Home Screen Operations | 2 |
| Getting Ready to Print | 4 |
| Printing CAD Drawings | 6 |
| Printing Banners | 8 |
| Printing at Non-Standard Sizes | 10 |
| Printing by Installing a USB Flash Memory | 12 |
| Other Printing (Wi-Fi Direct Printing/ Print from an Upload) | 13 |
| Loading an Original for Copying/Scanning (SC-T5400M Series) | 14 |
| Procedure for Copying (SC-T5400M Series) | 15 |
| Procedure for Scanning (SC-T5400M Series) ... | 16 |

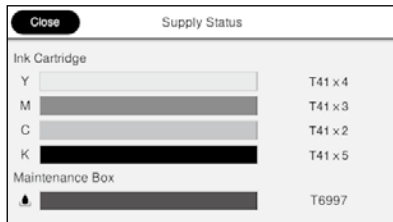
Home Screen Operations

Approx. remaining levels of consumables

As the ink is consumed or the maintenance box becomes full, the corresponding bar becomes shorter.


When  is displayed on bars, prepare a new ink cartridge or a maintenance box. You can continue printing until replacement is required.

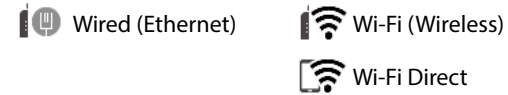
 Touch this icon...



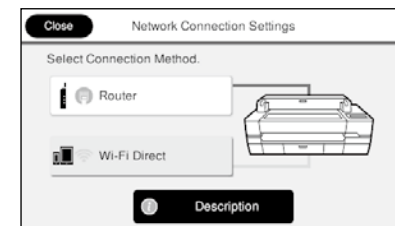
You can see the consumable product numbers.

The network connection status


The icon changes according to the connection method. While the printer is connected,  is blue and indicates the signal strength.



 Touch this icon...




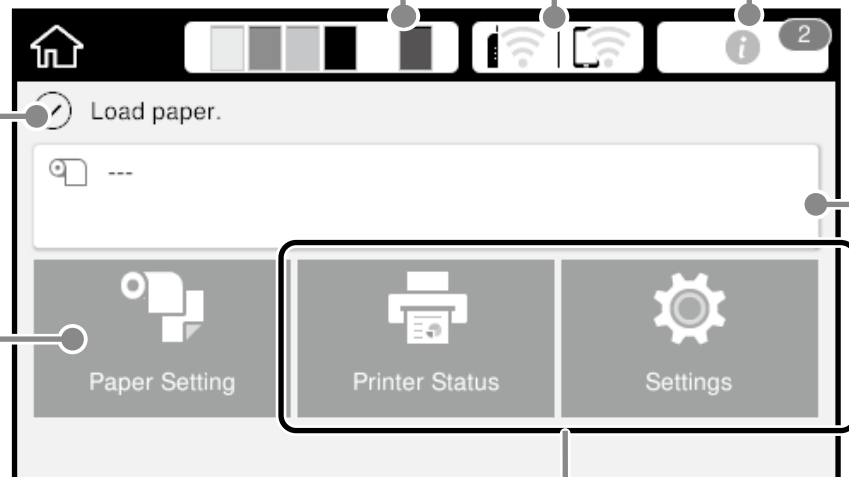
You can change the connection method.

For information on Wi-Fi Direct, see below.
 "Other Printing (Wi-Fi Direct Printing/Print from an Upload)" on page 13


The current printer status

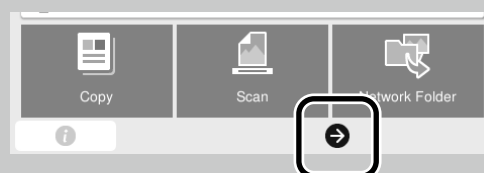
Touch to load or remove paper.

 "Getting Ready to Print" on page 4



Touch to check the printer status or change the printer settings.

If  appears, some items may not be displayed.
 Example: SC-T5400M Series



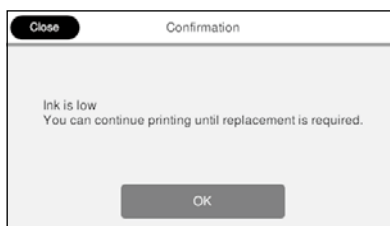
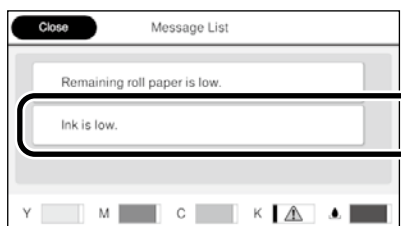
The home screen is displayed when the printer is turned on. These pages show the available operations on the home screen.

The number of notices

The number of notices, such as ink low warnings, is displayed on the icon.



Touch this icon...



A list of the notices that require your action is displayed. You can see instructions on what to do when you touch each notice.

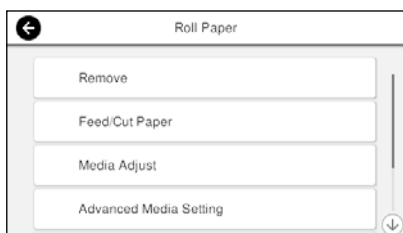
When you complete the actions for all the notices, the number disappears from the icon.

Roll paper information

The paper type and roll paper width that have been set are displayed.



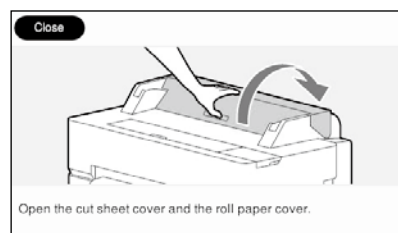
Touch after loading roll paper...



You can perform actions such as replacing roll paper.



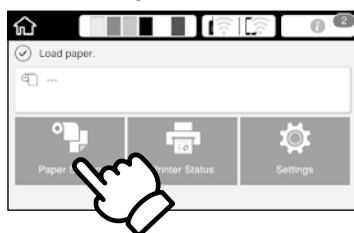
Touch before loading roll paper...



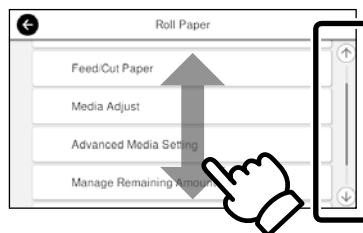
Instructions on how to load roll paper are displayed.

Touch Panel Operations

Touch (tap)



Slide

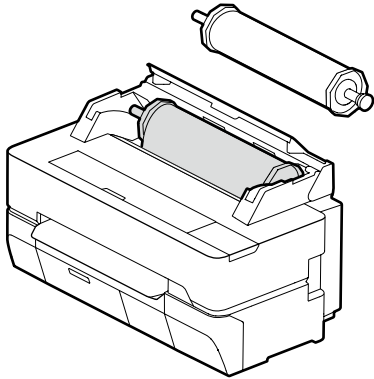


The scroll bar is displayed when you can scroll up and down.

Getting Ready to Print

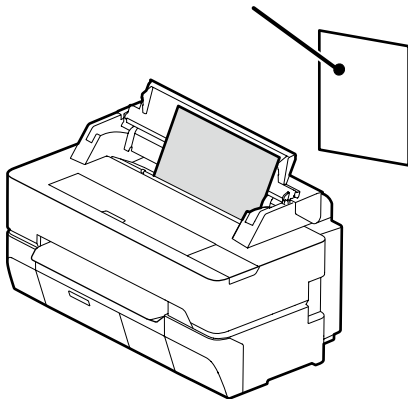
Check the Paper Loading Positions

Roll Paper



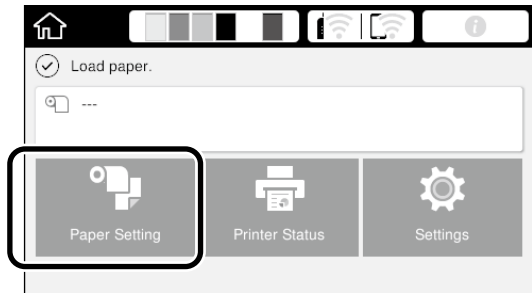
Cut Sheet (1 sheet)

A4 to the maximum print width
One sheet at a time

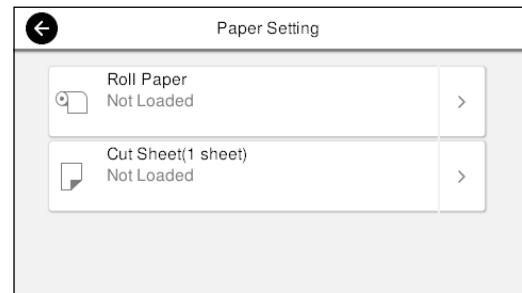


Load the Paper Following the On-Screen Instructions

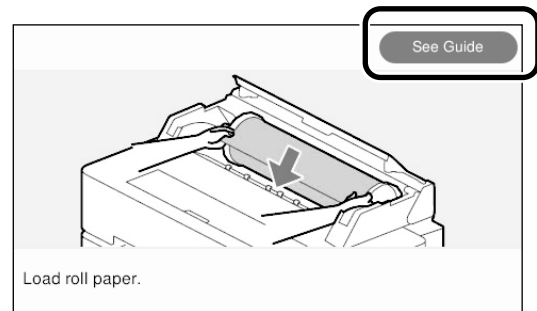
1 Touch **Paper Setting**.



2 Select one of the paper sources.



3 Touch **See Guide** to see the detailed on-screen instructions.



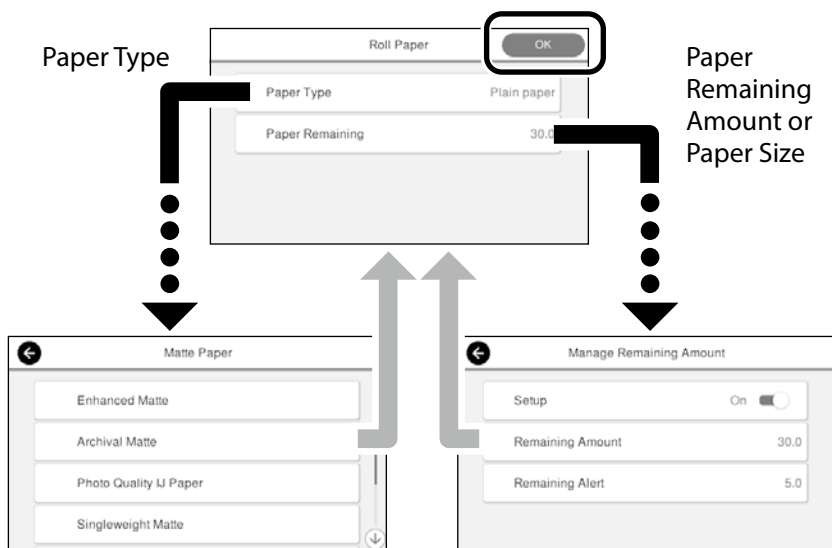
When **Load paper** is displayed on the home screen, you can open the cut sheet cover and load a cut sheet into the printer.

These pages explain how to get the printer ready for printing. Carefully follow these steps to get optimum print quality.

Set the Paper Type and Paper Size

The setting items vary according to the paper. If you select a paper type or size that does not match the loaded paper, the printout will have creases, ink smudges, or banding.

Press **OK** after you complete the settings



Promptly select the settings because the paper will start being fed if the screen is not used for 90 seconds.

Epson Special Paper

Select the paper name printed on the paper package.

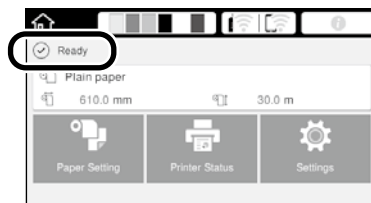
Non-Epson Paper

Select one of the following.

- Plain Paper
- Coated Paper <Generic>
- Photo Paper <Generic>
- Tracing Paper
- Tracing Paper <LowDuty>
- Matte Film

Print

When **Ready** is displayed, you can start printing.



Printing CAD Drawings

Using the Printer Driver

This method is best suited to printing CAD drawings, such as appearance view of buildings, at high quality.

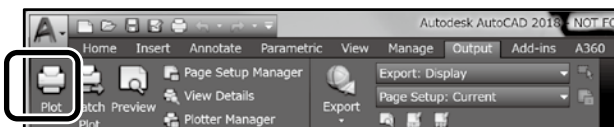


Important

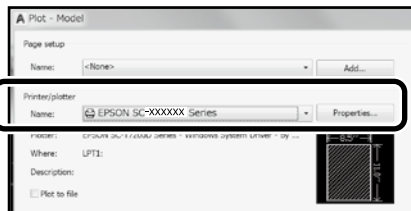
If lines or parts on your drawing are not printed properly, use the HP-GL/2 or HP RTL mode.

The procedure below is for AutoCAD 2018.

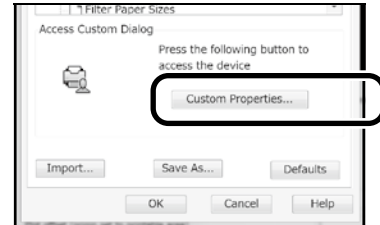
1 Click Plot.



2 Select the printer in **Printer/plotter**, and then click **Properties...**



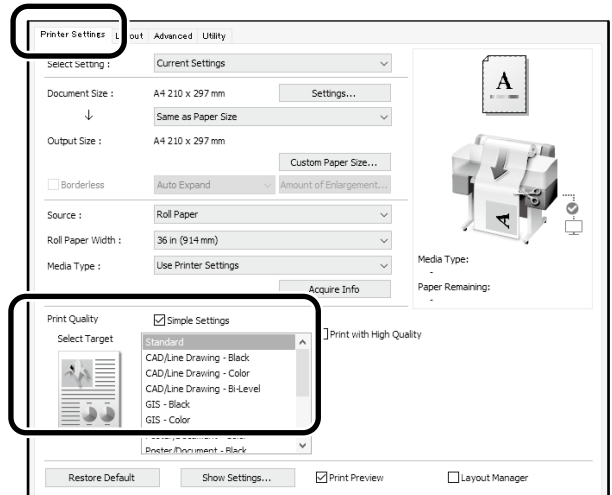
3 Click **Custom Properties**.



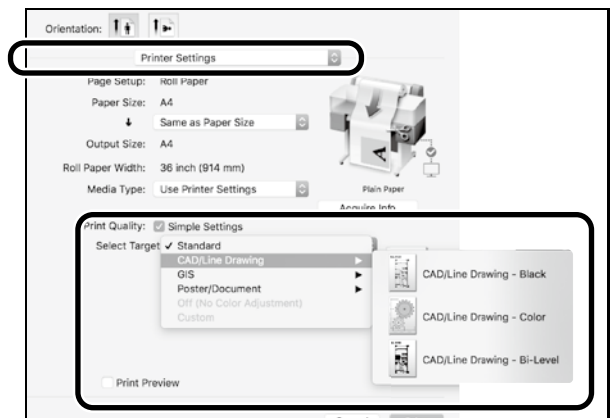
The printer driver screen is displayed.

4 Select **CAD/Line Drawing** at **Printer Settings** tab.

Windows



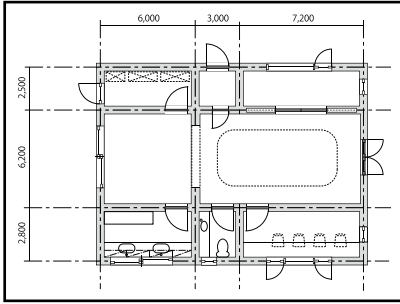
Mac



Print CAD and GIS drawings using either of the following two methods depending on the intended use of the drawing.

Using HP-GL/2 or HP RTL Mode

This method is best suited to printing CAD and GIS drawings, such as maps and blueprints.

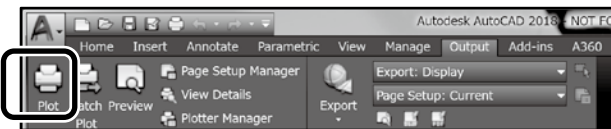


You can print from an application that supports HP-GL/2 (compatible with HP DesignJet 750C) and HP RTL.

The default paper source is **Roll Paper** and the default print quality is **Standard**. If you want to change the settings, change them from the printer setting menu before performing the procedure below.

The procedure below is for AutoCAD 2018.

1 Click **Plot**.



2 Select plotter in **Printer/plotter**.

Select the plotter name as shown below according to your model.

SC-T5400 Series: HP DesignJet 750C C3196A
SC-T5400M Series: HP DesignJet 750C C3196A
SC-T3400 Series: HP DesignJet 750C C3195A
SC-T3400N Series: HP DesignJet 750C C3195A



❑ When nothing is printed or text is garbled

Change the printer setting as follows.

Settings - General Settings - Printer Settings - Printing Language - USB (or Network) - HP-GL/2

When you print using the printer driver, change the setting back to **Auto** from **HP-GL/2**.

❑ When you want to print on a cut sheet or change the print quality setting

Select your target setting item from the printer setting menu shown below.

Settings - General Settings - Printer Settings - Universal Print Settings

❑ When you want to change the pen width or pen color

Select your target setting item from the printer setting menu shown below.

Settings - General Settings - Printer Settings - HP-GL/2 Unique Settings

❑ When you want to print on oversized paper

Load the printer with paper larger than the original size, and then change the printer setting as follows.

Settings - General Settings - Printer Settings - Universal Print Settings - Page Margins option - Oversize

Printing Banners

Steps to print a banner

Create the original in the application*



Select the enlargement method in the printer driver

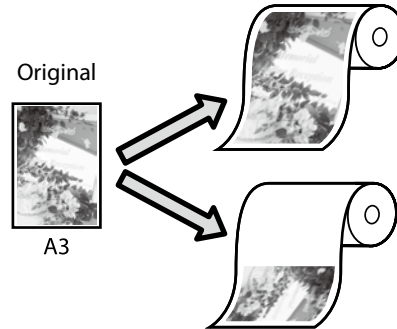


Print

*For creating a non-standard size original, see below.

"Printing at Non-Standard Sizes" on page 10

Fitting the Original to the Roll Paper Width

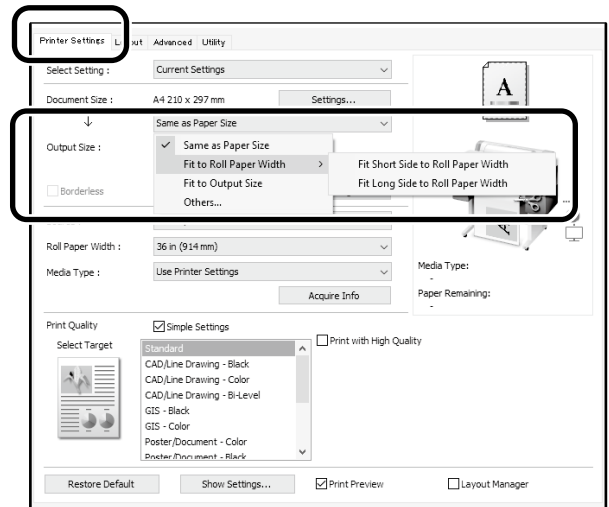


Fitting the short side of the original to the roll paper width.

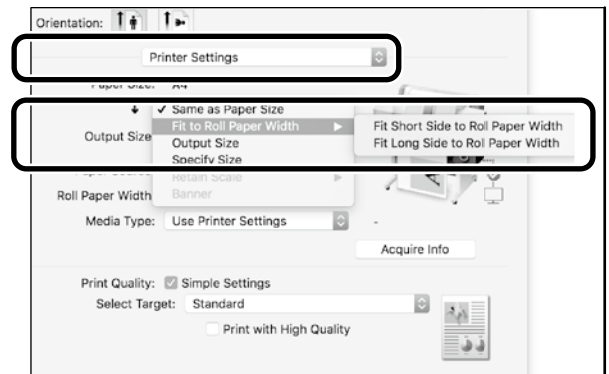
Fitting the long side of the original to the roll paper width.

Select **Output Size - Fit to Roll Paper Width**, and then select whether to fit the short side or long side of the original to the roll paper width.

Windows



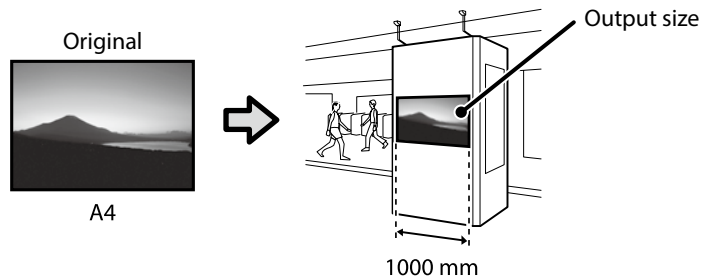
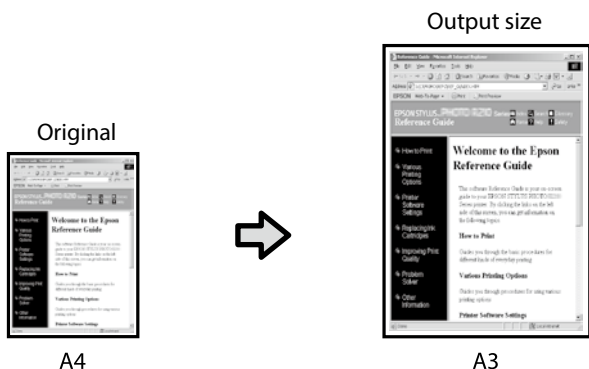
Mac



These pages explain how to enlarge and print an original created at a standard size for a banner.

Fitting the Original to the Output Size

Specifying the Size

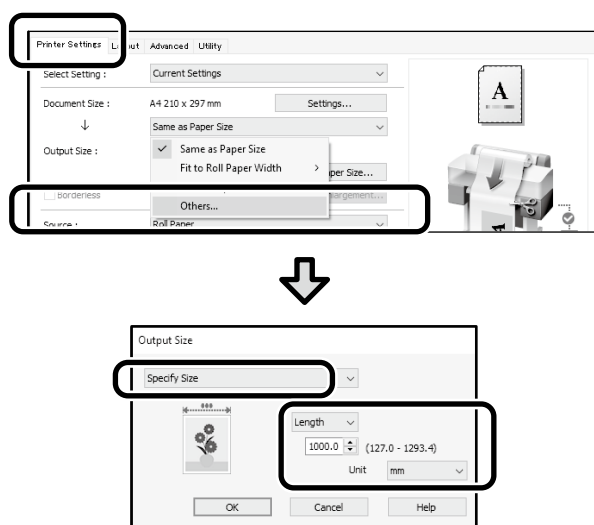
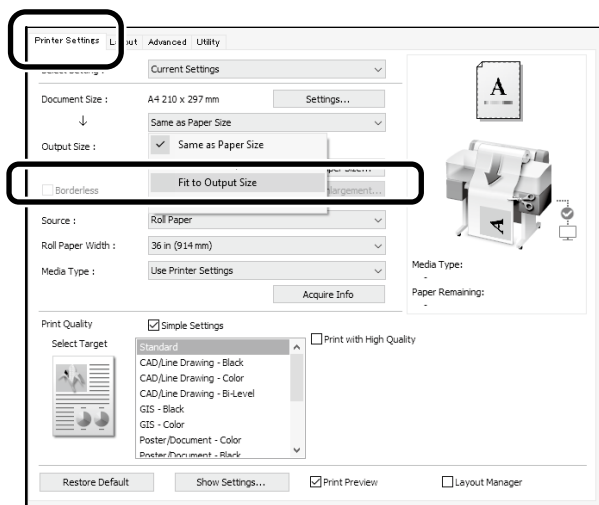


Select **Output Size - Fit to Output Size**, and then select the output size.

Select **Output Size - Specify Size**, and then select the output size or enter magnification.

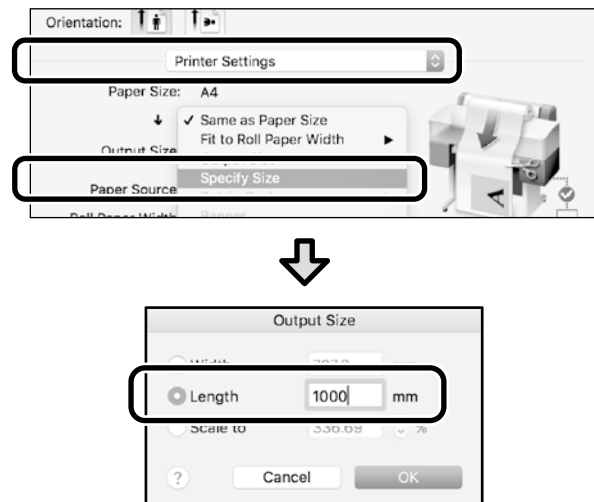
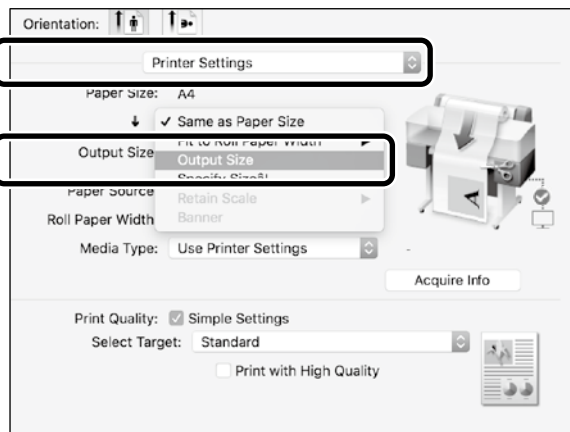
Windows

Windows



Mac

Mac



Printing at Non-Standard Sizes

Steps to print a non-standard size

Register and select the paper size in the application



Create the original



Enlarge and print the original

These pages explain how to create an original that is about one-third of the output size and then enlarge and print that original to create a banner that fits the width of 24-inch (610 mm) roll paper.

Paper size (original)*



Output size

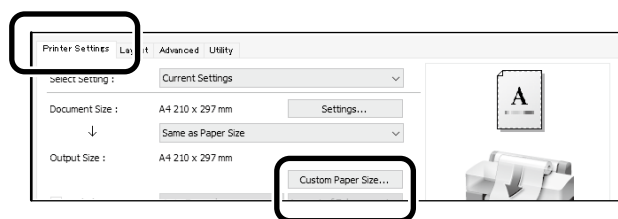


*You can configure the paper size as shown below.
Paper Width: 89 mm to maximum printing width
Paper Height: 127 mm to 18,000 mm (Windows)
Height: 127 mm to 15,240 mm (Mac)

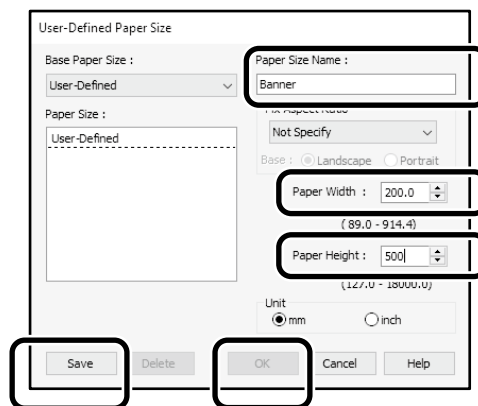
Register and Select the Paper Size

Windows

- 1 Start the application, click the **File** menu, and then click **Print**.
- 2 On the **Printer Settings** tab, click **Custom Paper Size...**

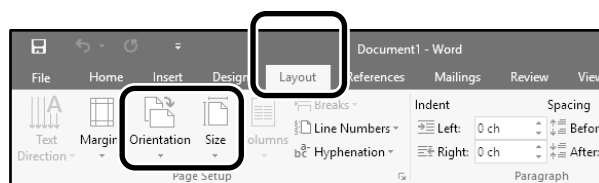


- 3 Enter the following information on the **User-Defined Paper Size** window. Click **Save**, and then click **OK** to finish registering the paper size.



- 4 Select the registered paper size.

Example: Microsoft Word 2016



Orientation: Landscape
Size: Banner

If the registered paper size is not displayed, check the paper sizes supported in the application.

These pages explain how to create and print an original with a non-standard size, such as a banner or square shape.

Create the Original

Create the original using the application.

Enlarge and Print the Original

Load 24-inch roll paper, and then enlarge and print the original by fitting it to the roll paper width.

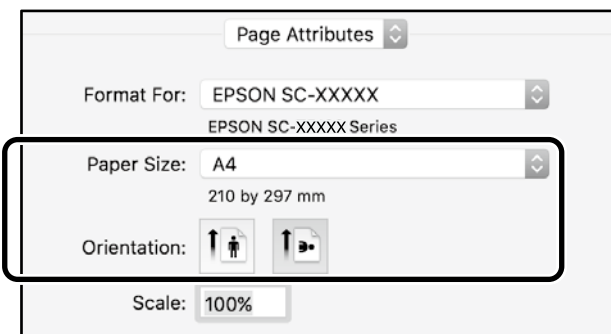
For enlarging and printing the original, see below.
🔗 "Printing Banners" on page 8

Mac

- 1 Start the application, and then click **Page Setup**.

If **Page Setup** is not displayed due to the application, select **Print**.

- 2 For **Orientation**, select , and for **Paper Size**, select **Manage Custom Sizes**.

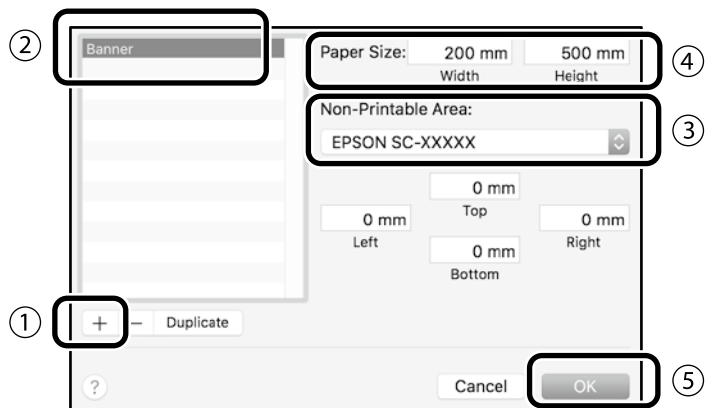


- 3 Register the paper size in the following order.

For ②, enter "Banner" as the name of the paper size.

For ③, select the printer name.

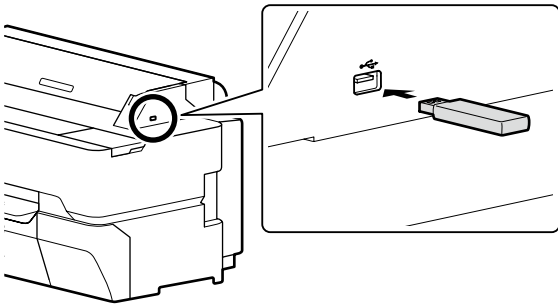
Click **OK** to finish registering the paper size.



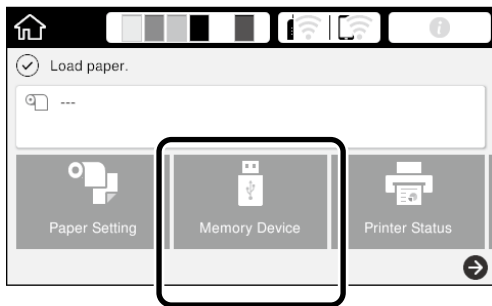
Printing by Installing a USB Flash Memory

You can print JPEG files or TIFF files saved on a USB flash memory by installing it on the printer.

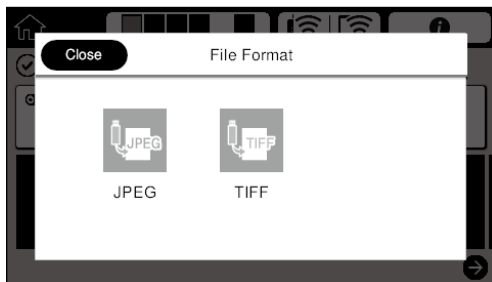
- 1 Install the USB flash memory in which the data to be printed is saved onto the printer.



- 2 From the home screen, touch **Memory Device**.

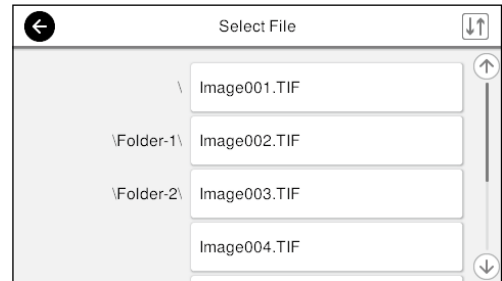


- 3 Select the file format.



- 4 Select one file to print.

When printing TIFF

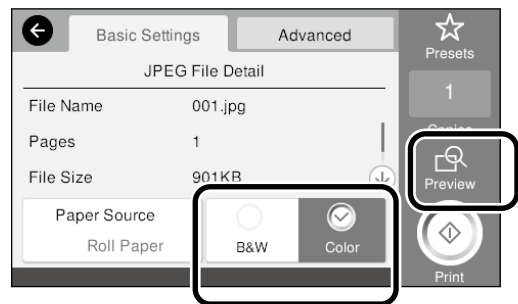


When printing JPEG

After selecting the file, touch the **Proceed to Print** button.

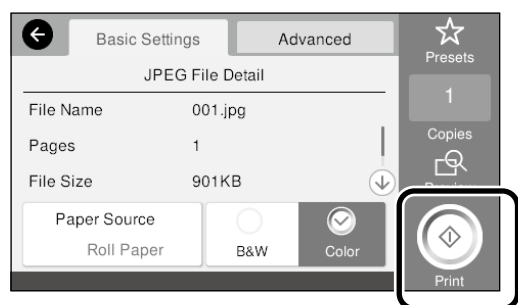


- 5 Select **B&W** or **Color**.



You can check the image to print with the **Preview** button.

- 6 Touch the **Print** button.



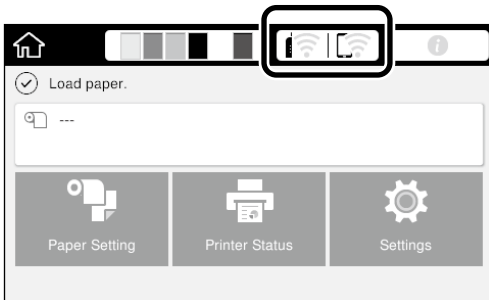
Other Printing

(Wi-Fi Direct Printing/Print from an Upload)

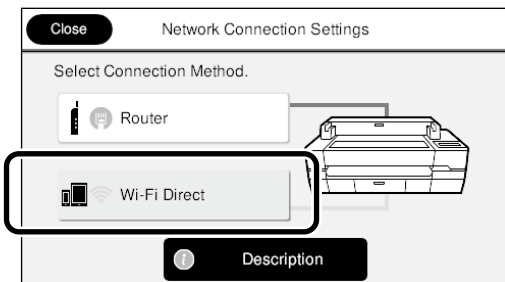
Printing by connecting with Wi-Fi Direct

Use Wi-Fi Direct to connect your device to the printer when you are outside the office and cannot connect to the printer over a wired or wireless connection.

- 1 Touch  on the home screen.



- 2 Touch **Wi-Fi Direct**.



Follow the on-screen instructions to complete the connection setting.

- 3 Print by using the printer driver or other functions.
See the User's Guide (online manual) for how to print.



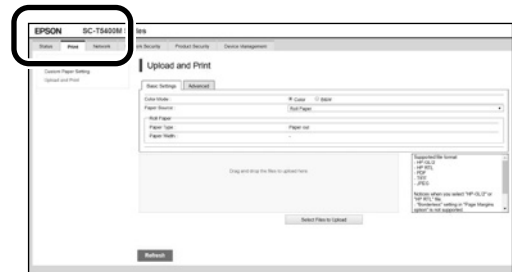
Print from an Upload using Web Config (SC-T5400M Series)

Using Web Config to print from an upload, allows you to print from a computer that does not have the printer driver installed.

The following are files that can print from an upload.

- JPEG
- HP-GL/2
- TIFF (data created on the printer only)
- PDF (data created on the printer only)

- 1 Start a web browser on a computer that is connected to the printer via a network.
- 2 Enter the printer's IP address into the address bar of the web browser, and then press the [Enter] or [Return] key.
- 3 Show the **Print** tab.



If the **Print** tab does not appear, contact your system administrator.

- 4 Start printing by dragging and dropping the data.



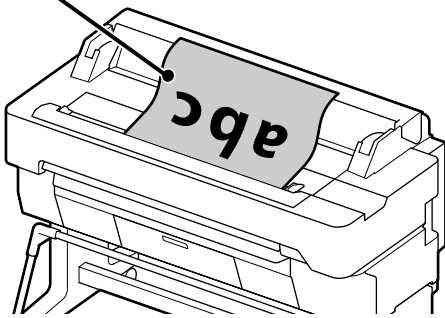
Loading an Original for Copying/ Scanning (SC-T5400M Series)

This section explains an overview of loading an original to copy and scan.

Supported Sizes and Types of Originals

Size of original

Width of original: 148 mm to 914 mm (36 inches)
Length of original: 148 mm to 30,480 mm (1,200 inches)*
1 sheet only



Note the following when loading the original.

- Align the original along the right edge
- Load the original with the side to be scanned up
- Load the original in the direction of the picture

Original types

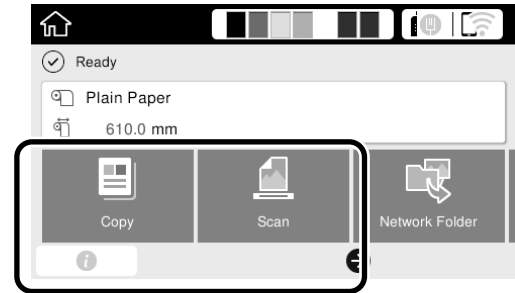
- Plain paper
- Recycled paper
- Coated paper
- Glossy paper
- Tracing paper
- Film
- Blueprint
- Actual printing stock
- Newspaper
- Flyer
- Drafting paper
- Japanese calligraphy paper

Use the optional carrier sheet for thin originals and originals that you do not want to damage. See the User's Guide (online manual) for how to use the carrier sheet.

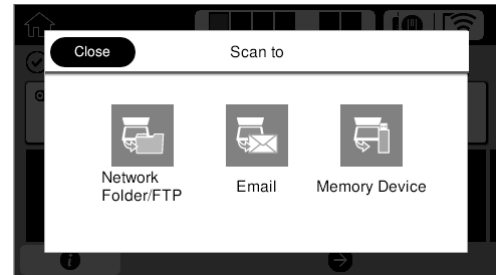
* Depending on the settings and the data format, the maximum length may be different.

Loading the Original while Viewing the Guide

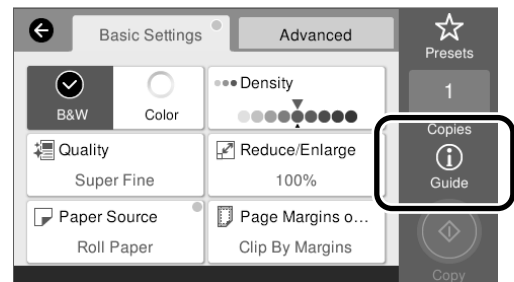
1 Touch Copy or Scan.



When scanning, select where you want to save the data.

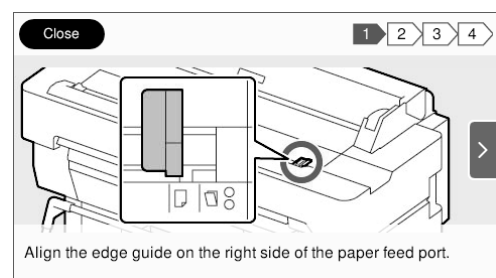


2 Touch Guide.



If the original is already loaded, **Remove** appears.
If you want to reload the original, touch **Remove** and load the original again.

3 Follow the on-screen instructions to load the original.



Procedure for Copying (SC-T5400M Series)

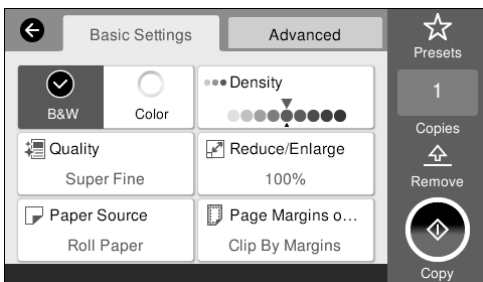
This section explains the procedure for copying after the original is loaded.

1 Load the original.

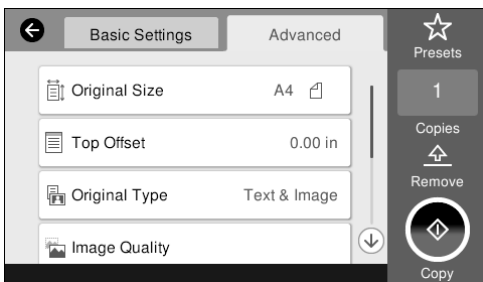
 "Loading an Original for Copying/ Scanning (SC-T5400M Series)" on page 14

2 Do the settings for copying.

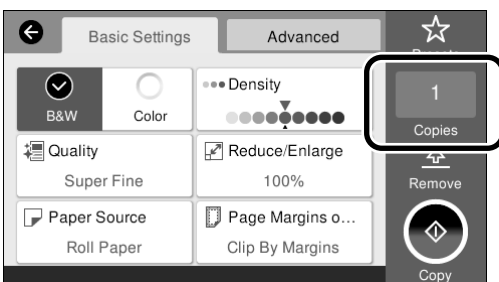
In **Basic Settings**, set the Color, Quality, Density, and Reduce/Enlarge.



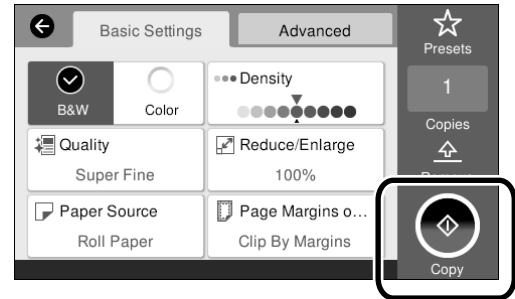
Do the settings from **Advanced** when you are doing detailed settings, such as the Original Type.



3 Set the number of copies.

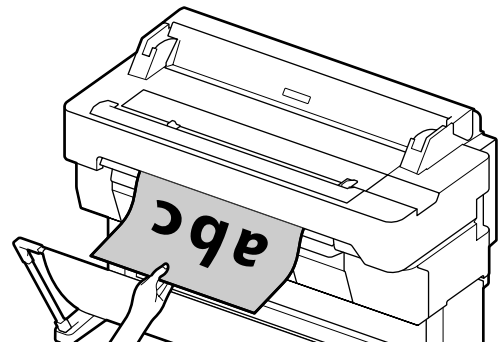


4 Touch the **Copy** button to start scanning the original.



5 Remove the original when scanning is complete.

While holding the original, touch the **OK** button on the screen, and then remove the original.



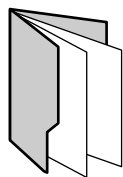
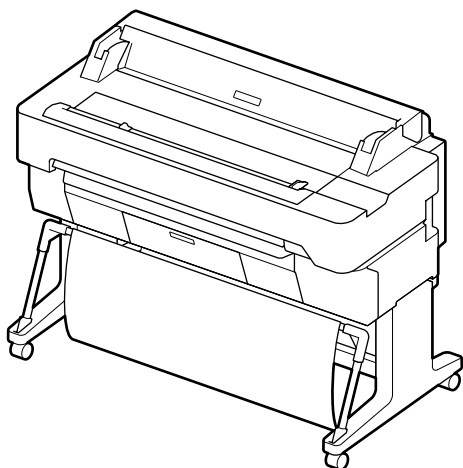
Printing starts when the original has been completely removed.

If you want to eject the original, without holding it at the eject slot, after it has been scanned, set the following on the printer's menu.

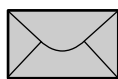
Settings - General Settings - Scan Settings - Scan Options - Confirm Before Ejecting Scanned Document - Off

Procedure for Scanning (SC-T5400M Series)

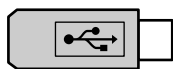
You can scan documents and CAD drawings, make them into image data, and then save the data or send it via email.



Network Folder/FTP



Email



Memory Device

| | |
|--------------------|---|
| Network Folder/FTP | You can save the data in a specified folder (shared folder) on the network. |
| Email | You can send the data as an e-mail attachment directly from the printer. |
| Memory Device | You can save the data to a USB flash memory that is installed in the printer. |

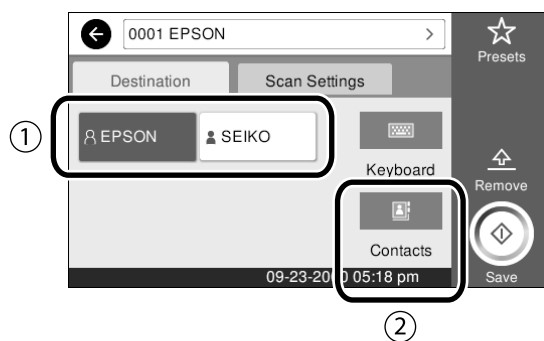
You must do settings in advance to save to a network folder/FTP or to send as an email. See the Administrator's Guide for more details.

1 Load the original.

“Loading an Original for Copying/Scanning (SC-T5400M Series)” on page 14

2 Specify the destination or where you want to save the data.

Specify the destination or where you want to save the data by entering the destination directly or by selecting the destination from a list of destinations that has been registered in advance.

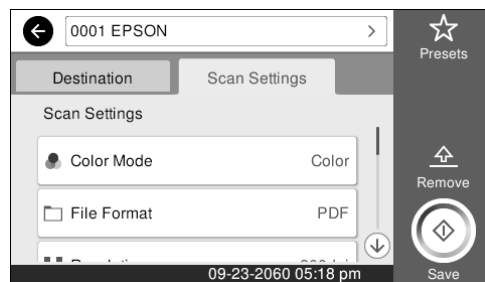


| | |
|-------------------|--|
| ① Destination tab | Specify from the registered destinations. |
| ② Contacts | Specify from the destinations registered in your Contacts. You can also register new destinations. |

If a destination is not registered in your Contacts, select **Keyboard**. See the User's Guide (online manual) for more information.

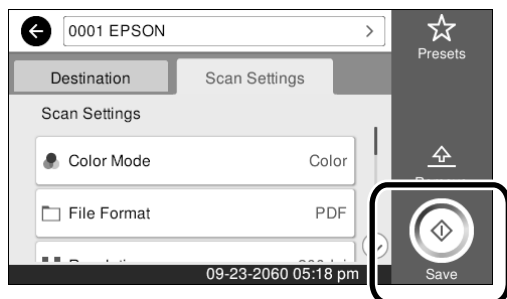
3 Do the settings for scanning in Scan Settings.

Select the Color Mode, File Format, and other such items.



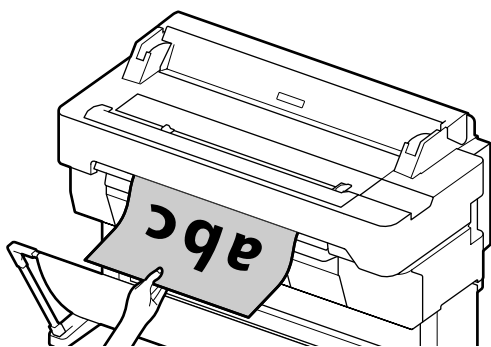
There are 3 ways that you can save or send the data of scanned images.

- 4** Touch the **Save** button to start scanning the original.



- 5** Remove the original when scanning is complete.

While holding the original, touch the **OK** button on the screen, and then remove the original.

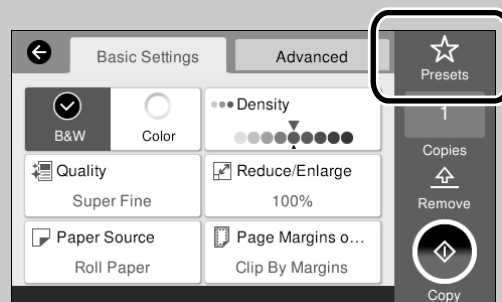


If you want to eject the original, without holding it at the eject slot, after it has been scanned, set the following on the printer's menu.

Settings - General Settings - Scan Settings - Scan Options
- Confirm Before Ejecting Scanned Document - Off

You can register setting values that are often used in copying and scanning as presets.

Select **Presets** on each settings screen, and then touch **Save as Preset**. Enter the registered name, and then touch the **OK** button to register the preset.



If you cannot edit or register your presets, the administrator may have restricted the function. Contact the printer's administrator.

MEMO

Copyrights and Trademarks

No Part of this publication may be reproduced, stored in a retrieval system, or transmitted in any form or by any means, electronic, mechanical, photocopying, recording, or otherwise, without the prior written permission of Seiko Epson Corporation. The information contained herein is designed only for use with this Epson printer. Epson is not responsible for any use of this information as applied to other printers.

Neither Seiko Epson Corporation nor its affiliates shall be liable to the purchaser of this product or third parties for damages, losses, costs, or expenses incurred by the purchaser or third parties as a result of accident, misuse, or abuse of this product or unauthorized modifications, repairs, or alterations to this product, or (excluding the U.S.) failure to strictly comply with Seiko Epson Corporation's operating and maintenance instructions.

Seiko Epson Corporation shall not be liable for any damages or problems arising from the use of any options or any consumable products other than those designated as Original Epson Products or Epson Approved Products by Seiko Epson Corporation.

Seiko Epson Corporation shall not be held liable for any damage resulting from electromagnetic interference that occurs from the use of any interface cables other than those designated as Epson Approved Products by Seiko Epson Corporation.

EPSON, EPSON EXCEED YOUR VISION, EXCEED YOUR VISION, and their logos are registered trademarks or trademarks of Seiko Epson Corporation.

Microsoft®, Windows®, and Windows Vista® are registered trademarks of Microsoft Corporation.

Mac, macOS, OS X, Bonjour, Safari, and AirPrint are trademarks of Apple Inc., registered in the U.S. and other countries.



HP-GL/2® and HP RTL® are registered trademarks of Hewlett-Packard Corporation.

AutoCAD is registered trademarks or trademarks of Autodesk, Inc., and/or its subsidiaries and/or affiliates in the USA and/or other countries.

General Notice: Other product names used herein are for identification purposes only and may be trademarks of their respective owners. Epson disclaims any and all rights in those marks.

© 2018 Seiko Epson Corporation. All rights reserved.

Meaning of Symbols

| | |
|--|---|
|  Important | Important must be followed to avoid damage to this product. |
|  | Indicates related reference content. |

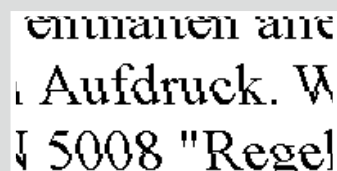
Product Model Descriptions

Some models described in this manual may not be sold in your country or region.

Horizontal or Vertical Lines



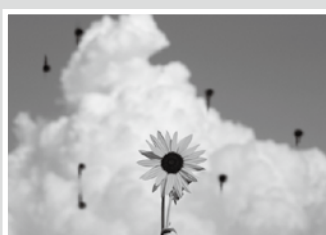
Double Ruled Lines or Warped Characters



Creases, Scuff marks, or Uneven colors



Ink Drops



Lines appear on the scanned or copied document.

Solutions

Perform the solutions in the following order until the printed results have improved. Start by reloading the target paper.

Check the Paper Type Setting

Touch **Paper Setting** on the home screen and make sure the set paper and paper type are matching. If the paper type setting is incorrect, touch the target paper source and change to the correct paper type.

For how to set the paper type, see below.

☞ **"Getting Ready to Print" - "Set the Paper Type and Paper Size" on page 5**



If the printed results did not improve

Perform Easy Adjustment

From the home screen, touch **Paper Setting** - target paper source - **Media Adjust** - **Easy Adjustment**. Follow the on-screen instructions to complete the adjustment.



- When an Error message is Displayed
- If the adjustment results are not satisfactory

Perform Paper Feed Adjustment or Print Head Alignment

For details, see the User's Guide (online manual).

Perform head cleaning.

From the home screen, touch **Settings** - **Maintenance** - **Print Head Cleaning**.

The glass surface of the scanner is dirty. See the User's Guide (online manual) for how to clean the glass surface.