

Product: Epson Stylus Pro 3880 / 4900 / 7890 / 7900 / 9890 / 9900

Subject: ICC profiles for Fine Art Cotton Smooth Textured Bright Natural

EN	At present, this document is only available in English.
DE	Dieses Dokument ist gegenwärtig nur in Englisch verfügbar.
FR	A ce jour, ce document n'est disponible qu'en anglais.
IT	Attualmente questo documento è disponibile solo in lingua inglese.
PO	Atualmente este documento está unicamente disponível em inglês
ES	Atualmente este documento sólo está disponible en inglés.
NL	Dit document is op dit moment alleen in Engels verkrijgbaar.

1. File Information:

File Name:	ICC Profiles for Fine Art Cotton Smooth Textured Bright Natural
Version:	2.0
Modified Items:	SP 3880 addition
Supported OS:	Windows 98 / ME / NT / 2000 / XP / Vista / Seven / Windows 8 or later ; MacOS 8 / 9 / 10.2 or later
Supported Printers:	Stylus Pro 3880 / 4900 / 7890 / 7900 / 9890 / 9900

2. Profile Description:

These RGB ICC profiles are intended for prints with Fine Art Cotton Smooth Bright or Fine Art Cotton Smooth Natural or Fine Art Cotton Textured Bright or Fine Art Cotton Textured Natural using EPSON Professional Inkjet printers and their Epson standard printer drivers.

For details see Annex 1

3. Installing ICC Profiles for Fine Art Smooth Textured Bright Natural

To install the ICC profiles on your computer, you need to place them into the correct Operating System profile folder. Please see the following table for the correct location of the profile folder for your operating system:

Operating System	Location of ICC Profiles
Windows 98 / ME	Windows / System / Color
Windows NT	Winnt / System32 / Color
Windows 2000	Winnt / System32 / Spool / Drivers / Color
Windows XP / Vista / Seven / Windows 8	Windows / System32 / Spool / Drivers / Color
MAC OS 8 / 9	System Folder / ColorSync Profiles
MAC OS 10.2 or later	Library / ColorSync / Profiles

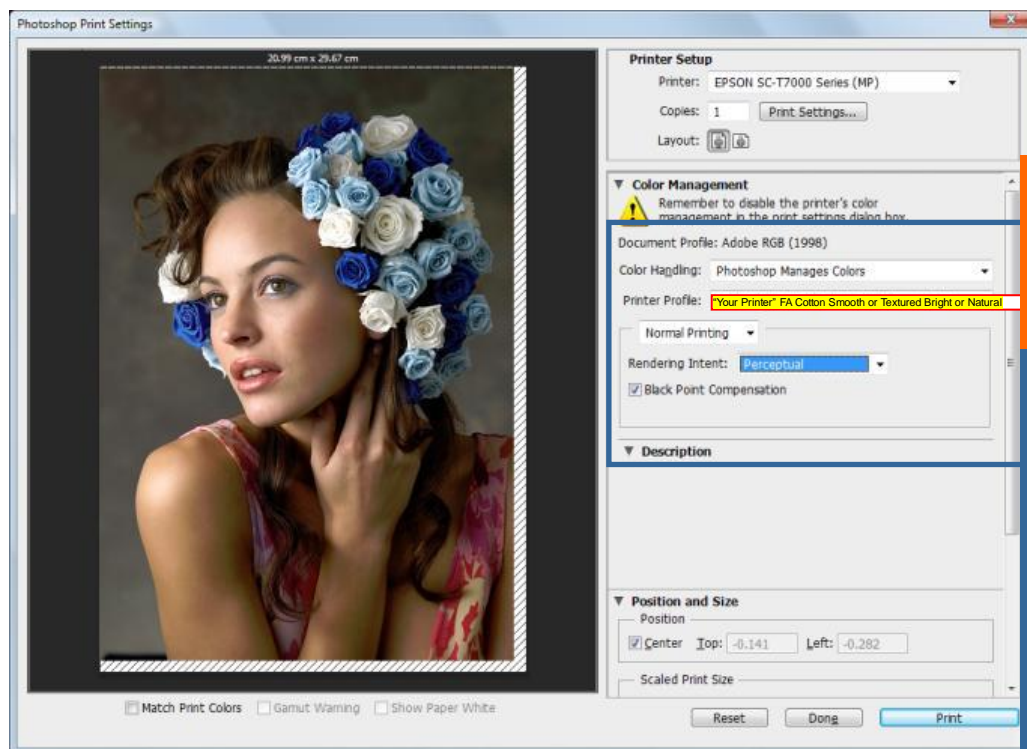
4. How to print with ICC profiles using Adobe Photoshop for the color conversion

As example, this chapter shows the required Adobe Photoshop CS6 print dialog (for Previous version see Annex 2) and Epson driver settings.

Please note: The settings may slightly differ for different Adobe Photoshop versions and Epson printer models.

- 4.1 Start Adobe Photoshop and open the image that you want to print.
- 4.2 Open the menu **"File > Print with Preview"**
- 4.3 In the **"Print"** dialog select the **Color Management** menu.
- 4.4 Make sure that your image has an assigned **"Document"** (input) profile to ensure consistent color printing.
- 4.5 Select the color management **"Options"**.
 - Choose **"Let Photoshop Determine Colors"** or **"Photoshop Manages Colors"** as **"Color Handling"**
 - Select **"Your Printer"** FA Cotton Smooth_Textured Bright_Natural as **"Printer Profile"**
 - Set the **"Rendering Intent"** to **"Relative Colorimetric"** or **"Perceptual"**
 - Check the **"Black Point Compensation"** check box.

For Photoshop CS6:



Make sure that your image has an assigned "input" profile. If not, you need to select a profile from the "Edit → Assign Profile" menu in Adobe Photoshop's main menu view.

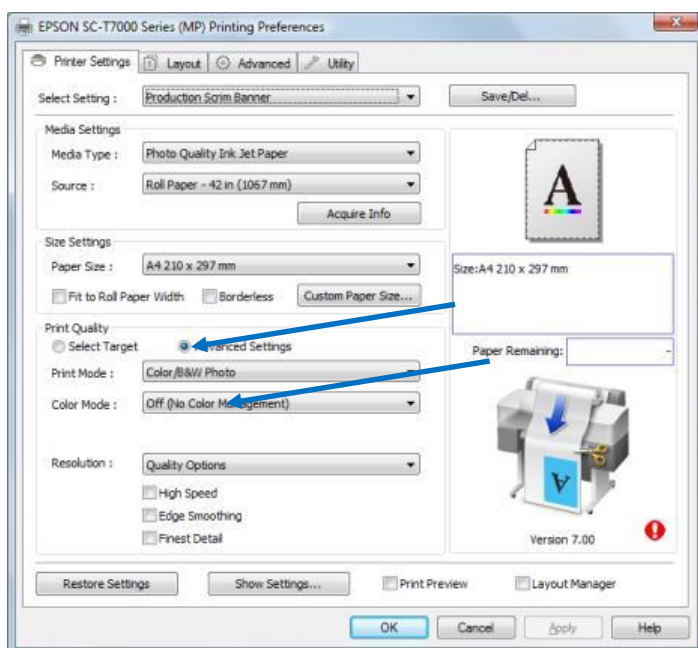
As Color Handling select **Photoshop Manages Colors** to allow Photoshop to perform the color conversion from the original image colour space to the printer media colour space.

As Printer Profile, select from the list the **"Your Printer"** FA Cotton Smooth_Textured Bright_Natural for Inkjet profile of your printer model.

As Rendering Intent, select **Perceptual** or **Relative Colorimetric** according to your image type and colour gamut

Activate the **Black Point Compensation** to ensure that shadow details will be preserved.

- 4.6 Click on the **“Page Setup”** or **“Print settings”** button to open the Epson printer driver dialog.
- 4.7 Import custom settings or make the following steps:
- 4.8 Go into the **“Advanced”** menu of the Epson printer driver dialog.
- 4.9 In the Advanced menu select:
 - As **“Media Type”** the **Ultra Smooth Fine Art Paper**
 - The desired print quality settings (i.e. Print Quality Resolution, High Speed on or off and Finest Detail on or off) ... following Manual printer driver settings sheet:



- Disable the **“Printer Color Management”** by setting it to **“Off (No Color Adjustment)”** -> **Advanced Settings**.

- 4.10 Finally press the **“Ok”** button to exit the Epson printer driver and click on the **“Print”** button of Adobe Photoshop to print your image.

5. How to print with ICC Profiles using the Epson printer driver for the color conversion

If your application is not supporting the ICC workflow or is allowing to send unconverted image data to your printer driver, you can print selecting the ICC profiles directly in the Epson printer driver.

Please note: Not all Epson printer models and operating systems allow the selection of custom ICC profiles. Therefore we recommend to check your printer's user guide if your printer and operating system support this feature.

- 5.1. In your application select the **“Print”** menu to open the Epson printer driver dialog.
- 5.2. Go into the **“Advanced”** menu of the Epson printer driver dialog.
- 5.3. In the Advanced menu select:
 - As **“Media Type”** the **Ultra Smooth Fine Art Paper** following **Manual printer driver settings sheet**

- The desired print quality settings (i.e. Print Quality Resolution, High Speed on or off and Finest Detail on or off) following Manual printer driver settings sheet
- Choose “ICM” as “Printer Color Management”.

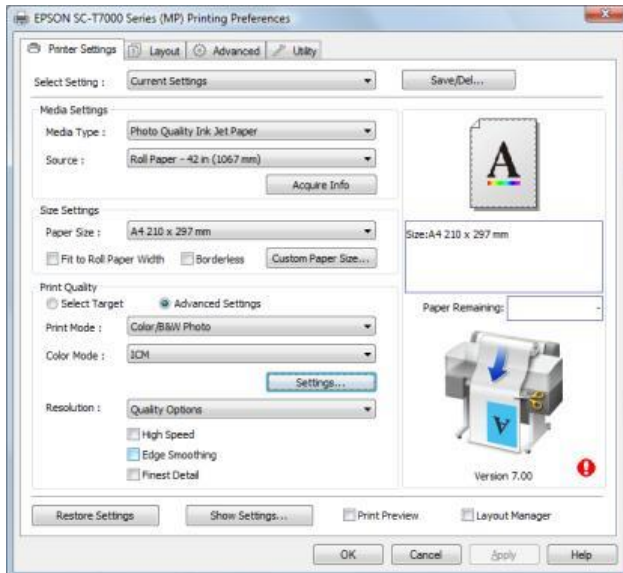
5.4. In the “**Driver ICM**” mode select:

The same “**Input Profile**” color space as your image has.

Set the “**Rendering Intent**” to “**Relative Colorimetric**” or “**Perceptual**”.

Activate the check box “**Show all profiles**”

Select as “**Printer Profile**” “Your Printer” FA Cotton Smooth_Textured Bright_Natural



Select **ICM** as Printer Color Management mode.

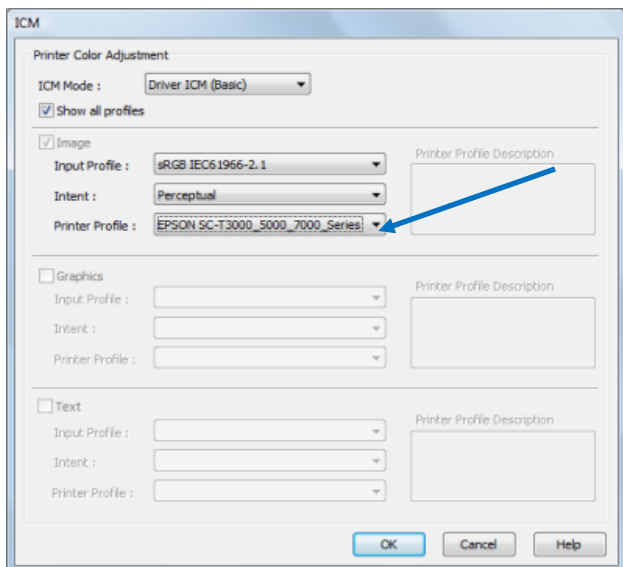
The first thing to do is to enable the **Show all profiles** option that will allow you to see and select all the ICC profiles installed on your computer.

As ICM Mode, select the **Basic** mode.

As Input Profile, select your document profile or define a profile by choosing it from the list. **Adobe RGB (1998)** or **sRGB** profiles are both suited for colour images printing. (Not ICC workflow supporting applications will mainly use the sRGB colour space)

As Intent, choose **Perceptual** or **Relative Colorimetric** according to your document type and color gamut

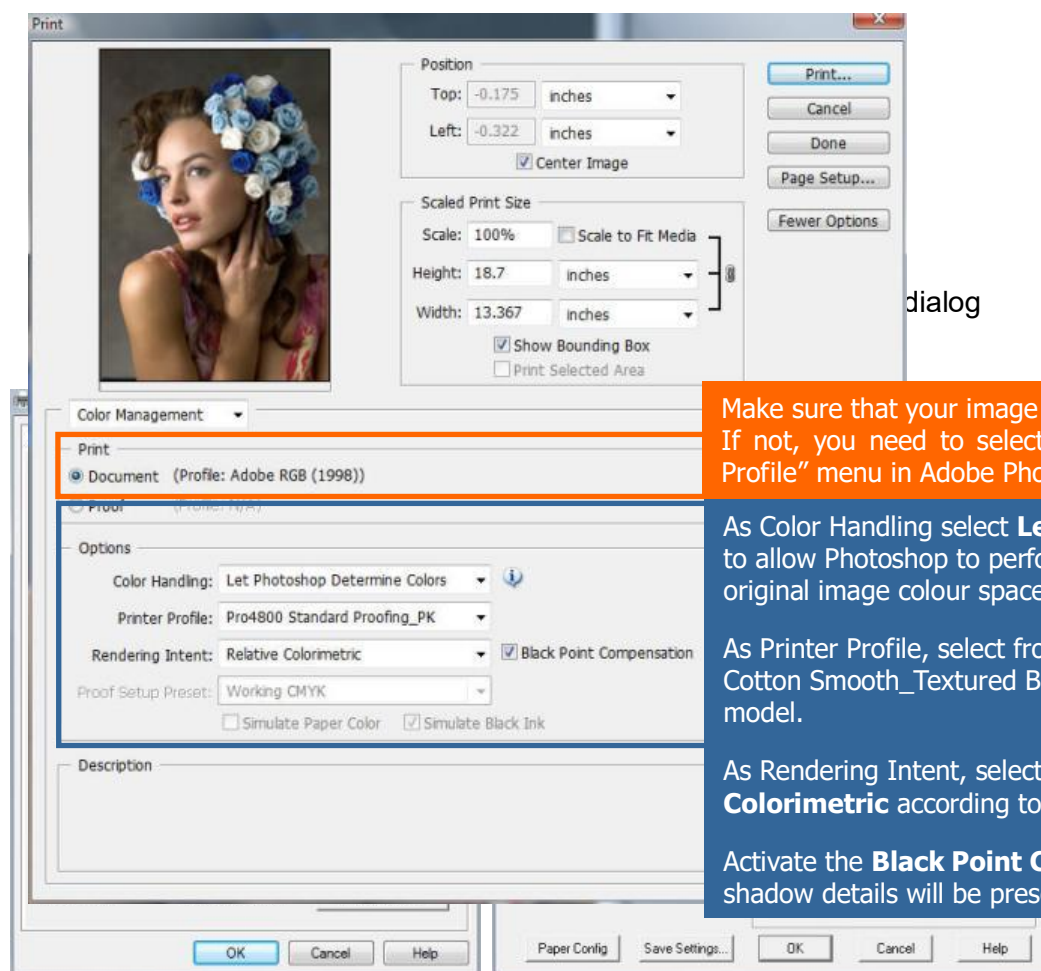
As Printer Profile, select from the list the “Your Printer” FA Cotton Smooth_Textured Bright_Natural profile of your printer model.



5.5. Finally press the “**OK**” button to exit the Epson printer driver and click on the “**Print**” button of your application to print your image.

Profile Name	Printer Model	Black Ink Type	EPSON Driver Media Type
Epson Stylus Pro 3880_3885_3890 FA Cotton Smooth Bright.icm	Stylus Pro 3880	Matte Black	Ultra Smooth Fine Art Paper
Epson Stylus Pro 3880_3885_3890 FA Cotton Textured Bright.icm	Stylus Pro 3880	Matte Black	Ultra Smooth Fine Art Paper
Epson Stylus Pro 3880_3885_3890 FA Cotton Smooth Natural.icm	Stylus Pro 3880	Matte Black	Ultra Smooth Fine Art Paper
Epson Stylus Pro 3880_3885_3890 FA Cotton Textured Natural.icm	Stylus Pro 3880	Matte Black	Ultra Smooth Fine Art Paper
Epson Stylus Pro 4900_4910 FA Cotton Smooth Bright.icm	Stylus Pro 4900	Matte Black	Ultra Smooth Fine Art Paper
Epson Stylus Pro 4900_4910 FA Cotton Textured Bright.icm	Stylus Pro 4900	Matte Black	Ultra Smooth Fine Art Paper
Epson Stylus Pro 4900_4910 FA Cotton Smooth Natural.icm	Stylus Pro 4900	Matte Black	Ultra Smooth Fine Art Paper
Epson Stylus Pro 4900_4910 FA Cotton Textured Natural.icm	Stylus Pro 4900	Matte Black	Ultra Smooth Fine Art Paper
Epson Stylus Pro 9890_7890 FA Cotton Smooth Bright.icm	Stylus Pro 7890/9890	Matte Black	Ultra Smooth Fine Art Paper
Epson Stylus Pro 9890_7890 FA Cotton Textured Bright.icm	Stylus Pro 7890/9890	Matte Black	Ultra Smooth Fine Art Paper
Epson Stylus Pro 9890_7890 FA Cotton Smooth Natural.icm	Stylus Pro 7890/9890	Matte Black	Ultra Smooth Fine Art Paper
Epson Stylus Pro 9890_7890 FA Cotton Textured Natural.icm	Stylus Pro 7890/9890	Matte Black	Ultra Smooth Fine Art Paper
Epson Stylus Pro 9900_7900 FA Cotton Smooth Bright.icm	Stylus Pro 7900/9900	Matte Black	Ultra Smooth Fine Art Paper
Epson Stylus Pro 9900_7900 FA Cotton Textured Bright.icm	Stylus Pro 7900/9900	Matte Black	Ultra Smooth Fine Art Paper
Epson Stylus Pro 9900_7900 FA Cotton Smooth Natural.icm	Stylus Pro 7900/9900	Matte Black	Ultra Smooth Fine Art Paper
Epson Stylus Pro 9900_7900 FA Cotton Textured Natural.icm	Stylus Pro 7900/9900	Matte Black	Ultra Smooth Fine Art Paper

Annex 2 - How to print with ICC profiles using Adobe Photoshop for the color conversion for Photoshop CS2.



dialog

Make sure that your image has an assigned "input" profile. If not, you need to select a profile from the "Edit → Assign Profile" menu in Adobe Photoshop's main menu view.

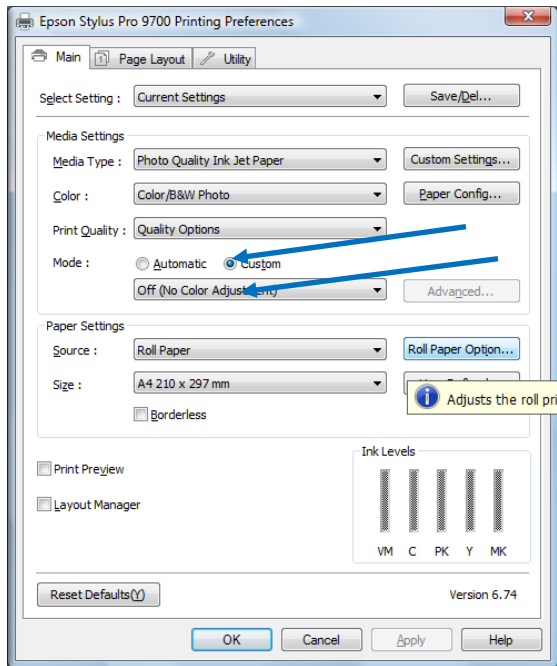
As Color Handling select **Let Photoshop Determine Colors** to allow Photoshop to perform the color conversion from the original image colour space to the printer media colour space.

As Printer Profile, select from the list the "Your Printer" FA Cotton Smooth_Textured Bright_Natural profile of your printer model.

As Rendering Intent, select **Perceptual** or **Relative Colorimetric** according to your image type and colour gamut

Activate the **Black Point Compensation** to ensure that shadow details will be preserved.

- Disable the "Printer Color Management" by setting it to "Off (No Color Adjustment)".



- Disable the “Printer Color Management” by setting it to “Off (No Color Adjustment)” -> Mode Custom.

Annex 4 - In the “Driver ICM” mode select

