

Firmware Update Function

(Updating from a USB memory stick)

The firmware update function allows you to easily update the projector's firmware without having to use dedicated updater software. This guide explains how to update the firmware using a USB memory stick.

Notes on Updating

- Responsibility for updating the firmware lies with the customer. If a firmware update fails due to a power failure, communication problems, and so on, a fee will be charged for any necessary repairs.
- This function may be changed without prior notice.

Necessary Items

USB memory stick
(FAT format)



Projector
(Model that supports firmware
updates from the USB-A port)

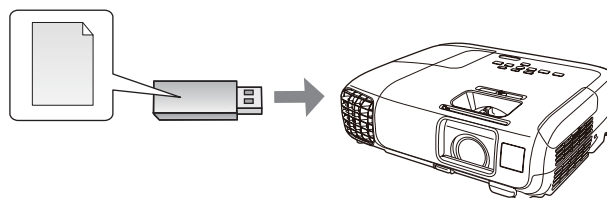


Update Procedure

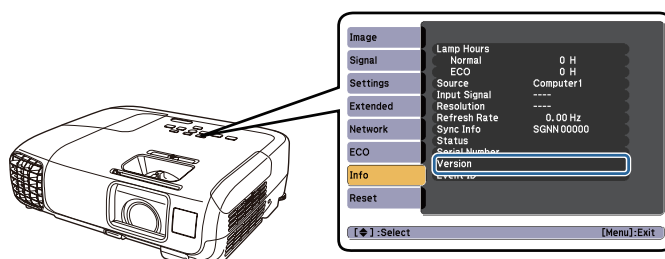
- 1 Save the firmware file to the USB memory stick (p.2).



- 2 Connect the USB memory stick to the projector to start the update (p.2).



- 3 Check the results of the update (p.3).



Procedure

1 Save the firmware file to the USB memory stick.

- 1 Download the projector firmware file to your computer from the Epson Web site (<http://www.epson.com/>).
- 2 Copy the downloaded firmware file to the root folder (highest folder in the hierarchy) of the USB memory stick.

Note

- Do not copy any other files to the USB memory stick.
- Do not change the firmware's file name. If the file name is changed, the firmware update will not start.

2 Connect the USB memory stick to the projector to start the update.

Before starting the update

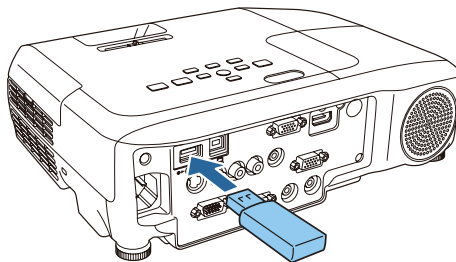
Disconnect the power cord from the projector and check that indicators on the projector are off.



Caution

- Do not disconnect the power cord from the projector while the firmware is updating. If the power cord is disconnected, the projector may not start correctly.
- Do not disconnect the USB memory stick from the projector while the firmware is updating. If the USB memory stick is disconnected, the update may not be applied correctly.

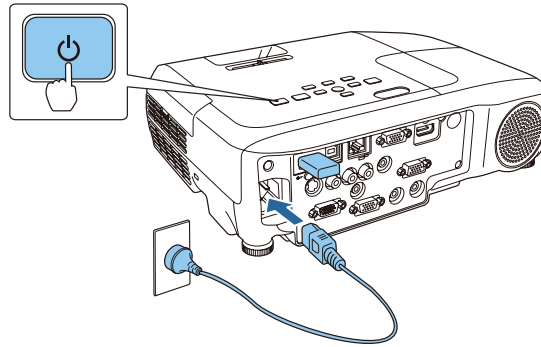
- 1 Connect the USB memory stick to the projector's USB-A port.



Note

Connect the USB memory stick directly to the projector. If the USB memory stick is connected using a USB hub, the firmware update may not be applied correctly.

- 2 Connect the projector's power cord while holding down the projector's power button or the [On] button .



The projector's indicators turn on (Update mode).

When the indicators turn on, release the power button or the [On] button.

The indicators remain on for approximately one minute.

When the indicators start flashing, the firmware update starts.

After the update finishes normally, the projector turns off.

If the Direct Power On function is set to On, the projector turns back on again (only for models with the Direct Power On function).

3 Check the results of the update.

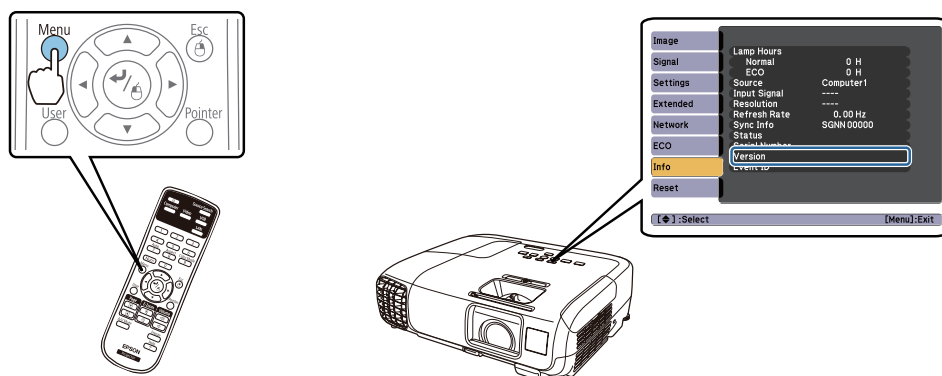
- 1 Check that the projector is in standby status (only the power indicator is lit blue).

If the projector is not in standby status, the firmware update has not finished. Wait for a while, and then check again.

- 2 Press the power button or the [On] button.

The projector starts.

- 3 Press the [Menu] button, and then check the **Info** menu.



If the **Version** number displayed in the **Info** menu has changed, the firmware update has been completed normally. See the *User's Guide* for details on displaying the **Info** menu.

Troubleshooting

Status	Remedy
The projector turns off without starting the update.	<ul style="list-style-type: none">• Check that the firmware file you copied to the USB memory stick is the correct file for the projector. If the firmware file is not correct, the firmware update does not start.• Check that the USB memory stick being used is in FAT format. The firmware update function is not available if the USB memory stick is not in FAT format.• Check that the USB memory stick is connected to the projector. If the projector does not recognize the USB memory stick, it turns off automatically. If the projector turns off, connect the USB memory stick, and then start the procedure again from "Connect the USB memory stick to the projector to start the update." on page 2.
The indicators flash rapidly.	<ul style="list-style-type: none">• The firmware update may have failed. Disconnect the power cord from the projector, and then reconnect it to the projector.• If the indicators continue to flash even after reconnecting the power cord, remove the power plug from the electrical outlet. Contact your local dealer or the nearest address provided in the <i>User's Guide</i>.

Notes

All rights reserved. No part of this publication may be reproduced, stored in a retrieval system, or transmitted in any form or by any means, electronic, mechanical, photocopying, recording, or otherwise, without the prior written permission of Seiko Epson Corporation. No patent liability is assumed with respect to the use of the information contained herein. Neither is any liability assumed for damages resulting from the use of the information contained herein.

Neither Seiko Epson Corporation nor its affiliates shall be liable to the purchaser of this product or third parties for damages, losses, costs, or expenses incurred by the purchaser or third parties as a result of: accident, misuse, or abuse of this product or unauthorized modifications, repairs, or alterations to this product, or (excluding the U.S.) failure to strictly comply with Seiko Epson Corporation's operating and maintenance instructions.

The contents of this guide may be changed or updated without further notice.

Illustrations in this guide and the actual projector may differ.

Trademarks

Product names used herein are for identification purposes only and may be trademarks of their respective owners. Epson disclaims any and all rights in those marks.

Software Copyrights

This product uses freeware as well as our own proprietary software.