

EPSON®

QUICK REFERENCE GUIDE

MM PROJECTOR
ULTI EDIA

EMP-730/720



Be sure to read the User's Guide thoroughly before using this projector.

WARNING

Never look into the lens while the projector's power is turned on.

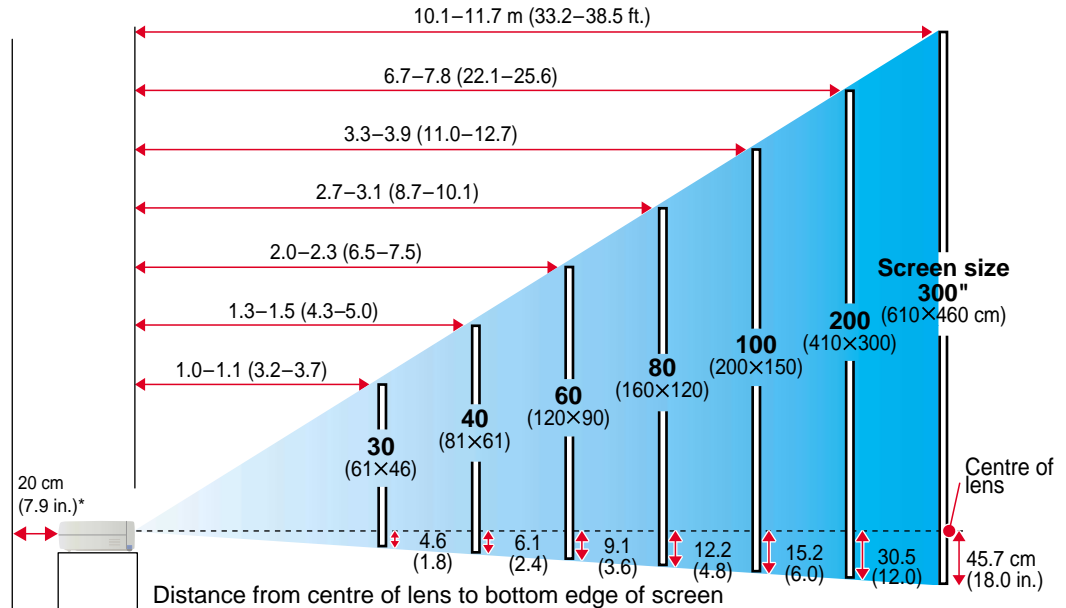
INDEX ►

Setting Up

"Screen Size and Projection Distance" in User's Guide

● Adjust the distance between the projector and the screen until the desired image size is obtained.

The values should be used as a guide for setting up the projector.



* When installing against a wall, leave a space of about 20cm (7.9 in.) between the projector and the wall.

Connections

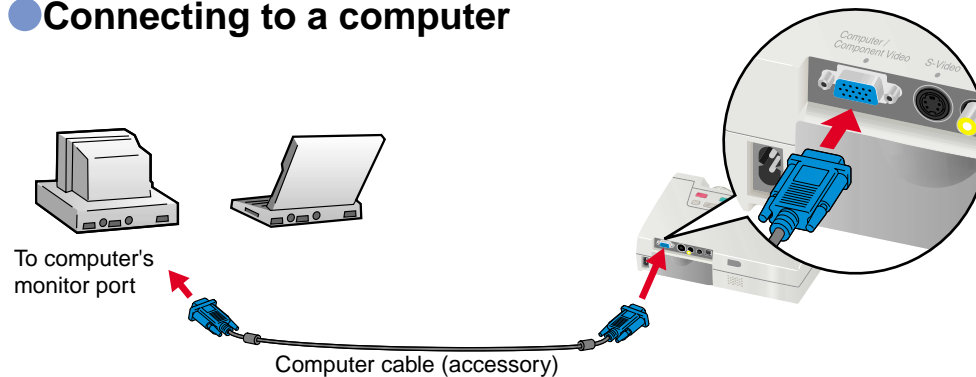
"Connecting to a Computer"
"Connecting to a Video Source"
in User's Guide

Tip

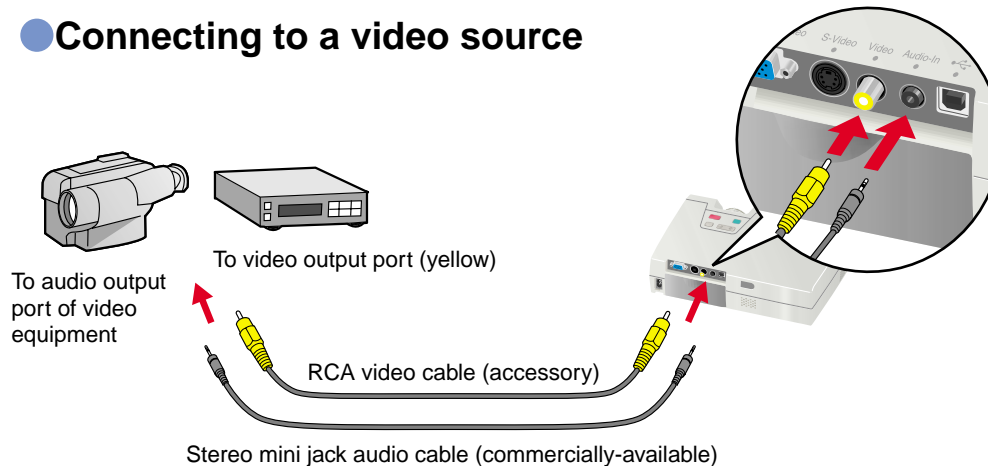
- The computer cable that is supplied with the projector may not match the shape of the monitor port on some computers. In such cases, you will need to purchase a separate adapter to connect the computer to the projector.
- If connecting component video source (such as a DVD player), you can use the optional component video cable to connect the source to the Computer /Component Video port at the rear of the projector.

* Turn off the power for both the projector and the other equipment before connecting them.

Connecting to a computer



Connecting to a video source



Projecting





"Turning On the Projector"
in User's Guide

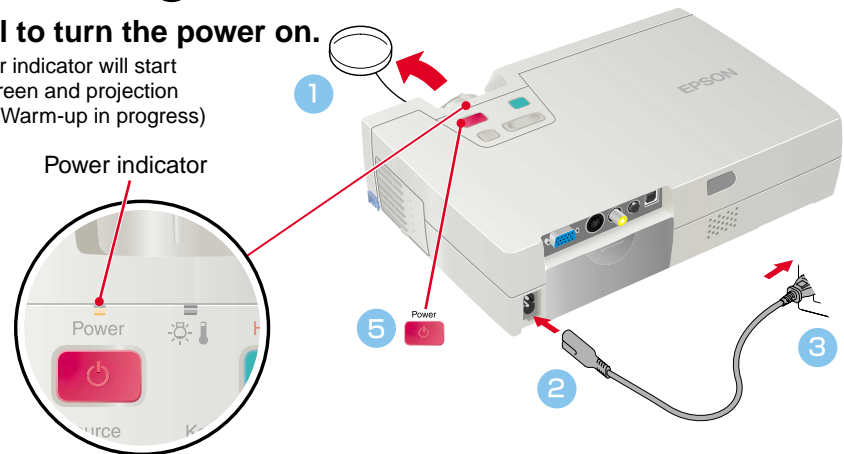
3

- 1 Remove the lens cover.
- 2 Connect the power cable to the projector.
- 3 Connect the other end of the power cable to an electrical outlet.
The Power indicator will light orange.
- 4 Turn on the power for the input source.
In the case of a VCR, press the PLAY button.
An image will be projected.



- 5 Press  on the projector's control panel or  on the remote control to turn the power on.

The Power indicator will start flashing green and projection will start. (Warm-up in progress)





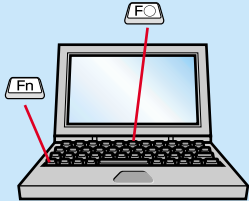
Tip

If connecting the projector to a computer with a built-in monitor, or to a laptop computer, you may need to change the output destination for image signals using one of the buttons on the computer (such as a button with a or on it) or setting menus.

The output destination can normally be changed by holding down the computer's **Fn** key and pressing one of the Function keys.

Once the source has been changed, after a short wait the projector will start projecting.

For details, refer to the documentation provided with your computer.

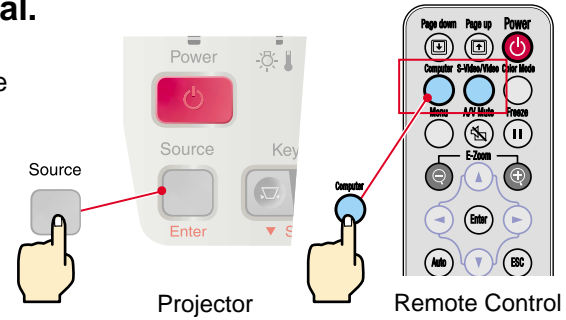


| Examples of changing output | |
|-----------------------------|---|
| NEC | Fn + F3 |
| Panasonic | Fn + F3 |
| TOSHIBA | Fn + F5 |
| IBM | Fn + F7 |
| SONY | Fn + F7 |
| FUJITSU | Fn + F10 |
| Macintosh | After startup, change the Control Panel adjustments so that Mirroring is active |

If images do not appear ...

Change the input signal.

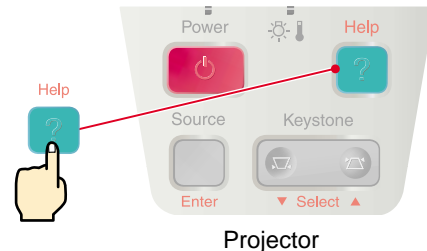
Each time is pressed, the image source cycles between Computer/Component Video, S-Video, and Video.



If you have other problems ...

Refer to the online Help information.


Press on the projector's control panel and follow the prompts which appear in order to solve the problem.



Projector

* Refer to "Troubleshooting".

Adjustment

 "Adjusting the Screen Image" in User's Guide

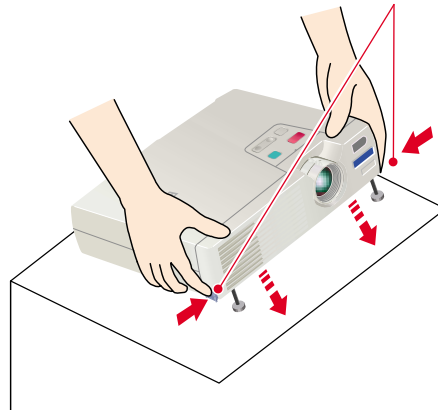
Tip


- If the front adjustable feet have been extended, they can be retracted again by pressing and holding the foot adjust buttons on both sides of the projector and gently pushing down the front of the projector.
- A keystone correction reduces screen size.
- If the images become uneven in appearance after keystone correction is carried out, decrease the "Sharpness" menu setting.

● Adjusting the projection angle

Use the foot adjust buttons to adjust the projection angle of the projector.

While pressing the foot adjust buttons, lift up the front of the projector.



When the projector is tilted, it will cause keystone distortion to appear in the image, but this distortion can be corrected using the automatic keystone correction function as long as the vertical angle of tilt is within a range of approximately 15°. If you would like to make further minor adjustments to the effects of automatic keystone correction, use  on the projector's control panel.

 See page 6.

● Adjusting the image size and focus

Focus adjustment


Image size adjustment

Turn to "W" to enlarge
Turn to "T" to reduce



"Manually Correcting Keystone Distortion" in User's Guide

Tip

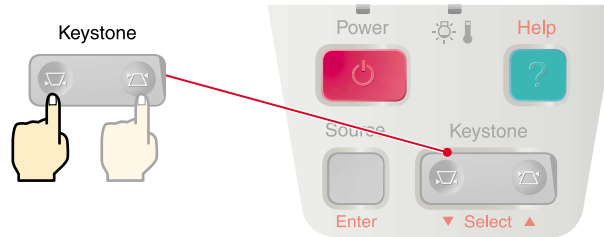
If "Auto Keystone" in the "Setting" menu is set to "OFF" (the default setting for this item is "ON"), automatic keystone adjustment is not carried out. Press  on the projector's control panel to adjust the keystone at this time.

To make further adjustments after automatic keystone correction

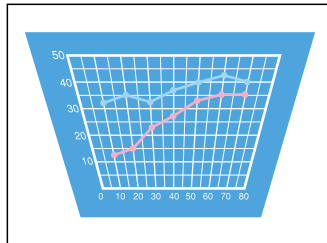
To make further adjustments after automatic keystone correction has been carried out, press



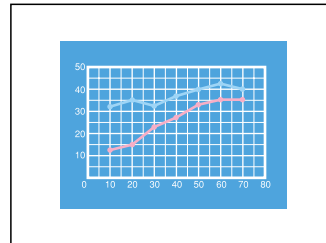
on the projector's control panel.



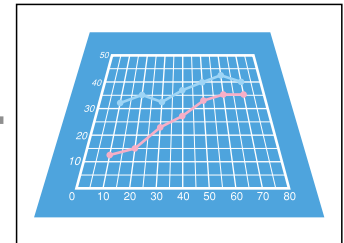
When the top is too wide



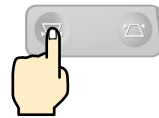
Keystone



When the bottom is too wide



Keystone



Adjustment

"Using the Configuration Menu Functions" in User's Guide



Tip

Press **ESC** to return to the previous menu level.

Other adjustments

Press the **Menu** on the remote control to display the configuration menu on the screen. You can then adjust the individual brightness, contrast and sharpness settings.

- 1 Press **Menu** on the remote control.

The configuration menu appears.

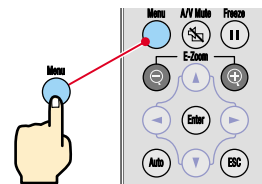
- 2 Use **Up** and **Down** to select the menu item to be set, and then press **Enter**.

The selected sub-menu then appears.

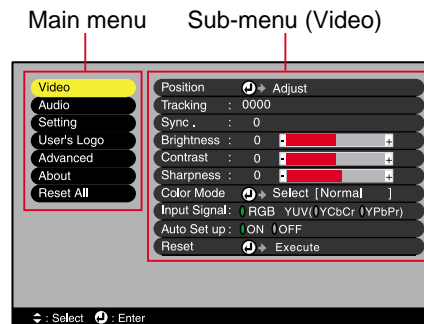
- 3 Use **Up** and **Down** to select an item, and then use **Left** and **Right** to adjust the setting or select "ON" or "OFF". Press **Enter** to accept the setting.

- 4 To change the setting for another item, repeat steps 2 and 3.

- 5 To close the menu, press **Menu**.



Remote control





Turning Off the Projector

▶ "Turning Off the Projector" in User's Guide







Tip

If you press a button other than  on the projector's control panel or  on the remote control while the confirmation message is displayed, the message will disappear and the projector will return to its original condition.

1 Turn off the power for the equipment connected to the projector.

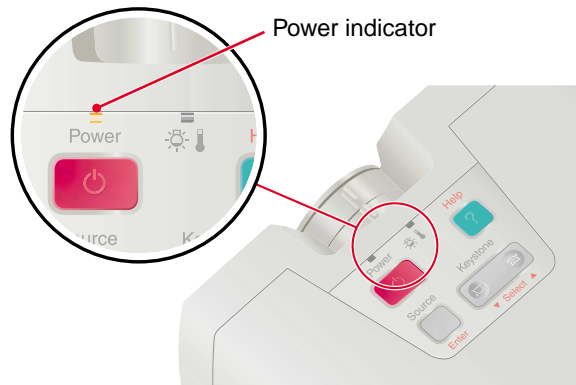
2 Press  on the projector's control panel or the  on the remote control twice to turn off the power.

To prevent mis-operation, a confirmation message appears when  or  is pressed once. The power turns off when you press the button once more. You can also press  or  twice in quick succession to turn off the power.

The Power indicator will flash orange (cool-down in progress/about 45 seconds).

3 After the Power indicator lights orange steadily you can disconnect the power cable.

If the power cable is disconnected while the Power indicator is still flashing orange, it may cause problems with projector operation.



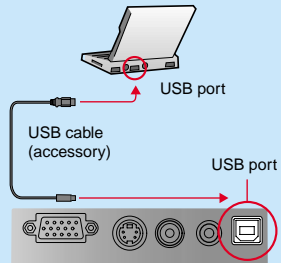
Functions for Enhancing Projection

"Wireless Mouse Function" in User's Guide



Tip

● When using the remote control as a wireless mouse, you need to connect the projector as follows.



● Always use the USB cable that is supplied with the projector, otherwise operating problems may occur.

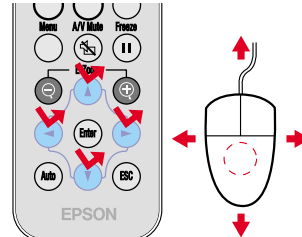
The following functions for enhancing the projection are explained here. Refer to the corresponding pages of the User's Guide for details on each function.

- Wireless mouse
- Selecting the colour mode
- E-Zoom
- A/V Mute

Using the remote control for one-person presentations

The remote control can be set so that it carries out the same operations as a computer mouse. You can use the remote control to control the computer's mouse pointer from a distance.

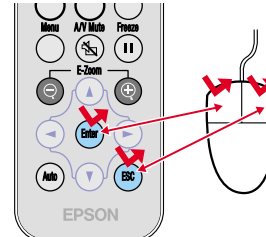
Mouse pointer movement



Press , , or .

(Each button corresponds to a mouse direction.)

Mouse clicks and drag & drop



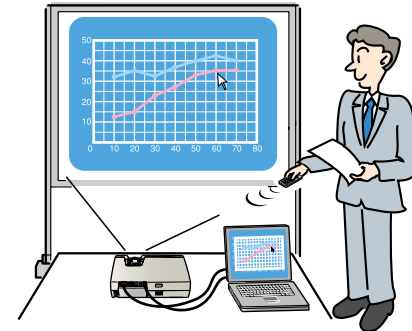
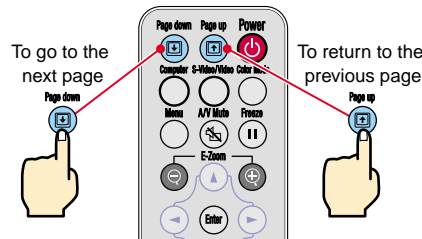
For left clicks: Press .

For right clicks: Press .

Drag & Drop:

While pressing , press , , , or to drag. At the desired point, release to drop.

Moving forward or back through pages in PowerPoint files




Selecting a colour mode

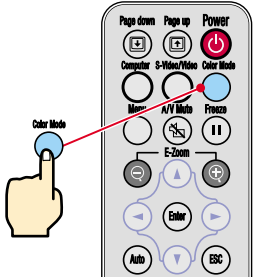
The following six preset colour modes are available for use depending on the characteristics of the images that are being projected. You can easily obtain the optimum image quality simply by selecting the colour mode that corresponds to the projected images. The brightness of the images will vary depending on which colour mode is selected.

| Mode | Application |
|--------------|---|
| sRGB | Images conform to the sRGB colour standard. If the connected source has an sRGB mode, set both the projector and the connected signal source to sRGB. |
| Normal | Brightness is emphasised. For presentation in bright rooms. |
| Meeting | Images are modulated using their original tints, with no colour enhancement. |
| Presentation | For presentations in dark rooms. |
| Theatre | Movie images are optimised using natural tints. |
| Game | Brightness is emphasised. Ideal for playing video games in bright rooms. |

Color Mode
Press  .

The colour mode changes as follows each time  on the remote control is pressed.
 Normal → Meeting → Presentation → Theatre → Game → sRGB ...

The default setting for the colour mode is "Normal" when computer images are being input, and "Theatre" when component video, composite video and S-Video signals are being input.



Remote Control

Functions for Enhancing Projection

"E-Zoom" in User's Guide

Tip

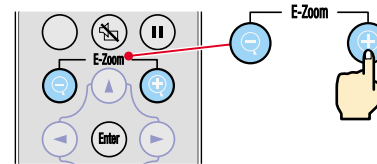
- After enlarging the image, you can use , , and to scroll around the image.
- To cancel the enlargement effect, press .

● Enlarging part of projected images

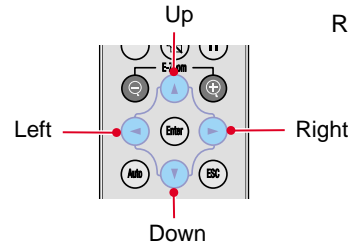
If you press or , the cross will appear at the middle of the image being projected.

Press , , or on the remote control to move the cross to the area of the image that is to be enlarged.

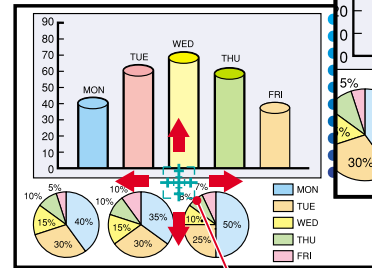
Press or .



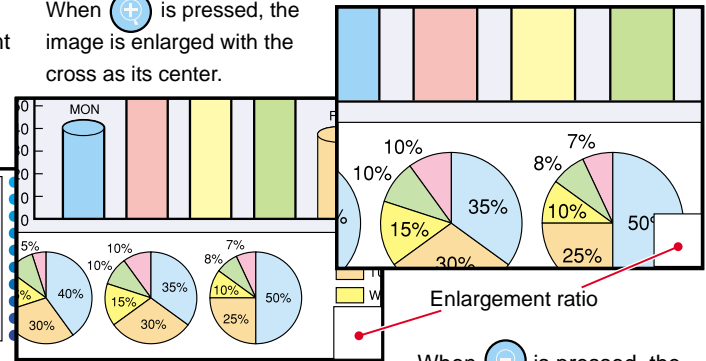
Remote control



When is pressed, the image is enlarged with the cross as its center.



Cross



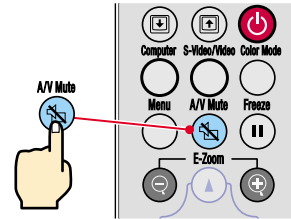
Enlargement ratio

When is pressed, the enlarged image is reduced in size again.

● Momentarily turning off images and sound

The picture and sound will be momentarily paused, and a solid black image, a solid blue image or the user's logo will be projected. It can be used when you do not want to show viewers details of operations such as selecting different files when computer images are being projected.

Press  .




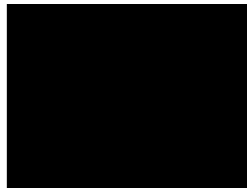
Remote Control

Press  once more.

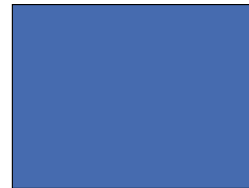
Projection of the images and sound will be restarted.

If you use this function while projecting moving images, the images and sound will still continue to be played back, and you cannot return to the point where the A/V Mute function was activated.

First press , select "Setting" and then "A/V Mute". Then select the type of screen to be displayed when projection is being stopped. The following choices are available. The default setting is the black screen. The EPSON logo is recorded as the default user's logo. Use the menus to set your own user's logo if desired.



Solid black



Solid blue









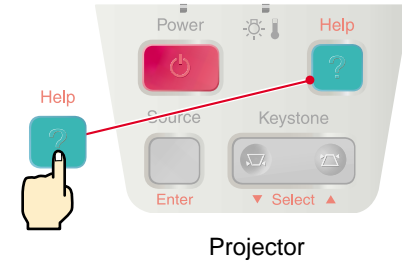
User's logo

"Using the Help"
in User's Guide

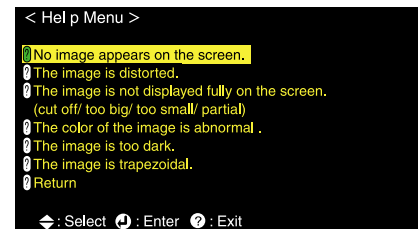
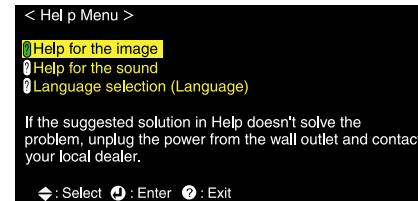
Viewing the online help

This projector is provided with an online help function which can be used when you have a problem using the projector.

- 1 Press  on the projector's control panel.
- 2 Select the item to view.
Press  on the projector's control panel.
Or press  on the remote control.
- 3 Accept the selected item.
Press  on the projector's control panel.
Or press  on the remote control.
- 4 The help contents will then be displayed.
To clear the help display, press  on the projector's control panel.

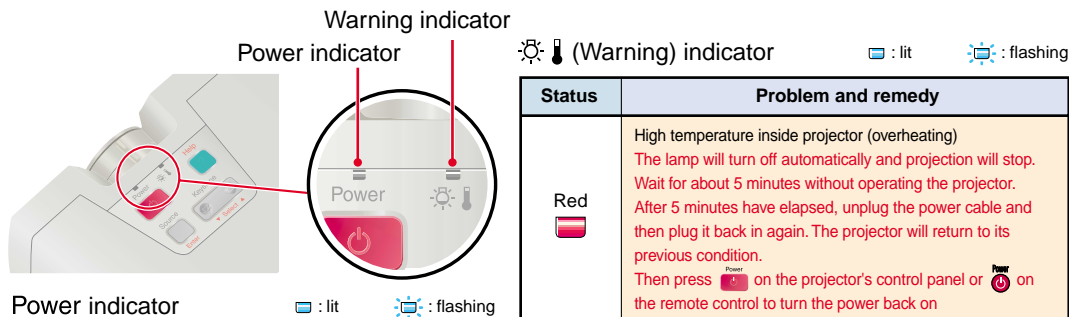








Projector









● Checking the indicators

You can check the status of the projector using the indicators on the projector's control panel. Refer to the table below for details on checking and remedying the cause of problems.



| Status | Problem and remedy |
|---|--|
| Orange  | Standby condition The power cable should only be disconnected when the projector is in this condition. Press  on the projector's control panel or  on the remote control to start projection. |
| Orange  | Cool-down in progress After about 45 seconds, the projector will change to standby mode (the indicator will light orange). |
| Green  | Projection in progress |
| Green  | Warm-up in progress After warm-up finishes, projection starts when an image signal is input. |

| Status | Problem and remedy |
|--|---|
| Red  | High temperature inside projector (overheating) The lamp will turn off automatically and projection will stop. Wait for about 5 minutes without operating the projector. After 5 minutes have elapsed, unplug the power cable and then plug it back in again. The projector will return to its previous condition. Then press  on the projector's control panel or  on the remote control to turn the power back on |
| Red  (0.5-second intervals) | Lamp problem Remove the lamp and check if it is broken. If the lamp is broken replace by a new lamp, or contact your local dealer for further advise. *1 |
| Red  (1-second intervals) | Internal problem Stop using the projector and ask for service. *2 |
| Orange  | High-speed cooling in progress. If the temperature rises too high again, projection will stop automatically. Check that the air inlet and air outlet are clear, and that the internal room temperature is not too high. |

*1 Contact your dealer for a spare lamp.

*2 For repairs, contact your dealer or the nearest address provided at "International Warranty Conditions" in "Safety Instructions/World-Wide Warranty Terms".

EPSON®



Printed on 100% recycled paper.



Printed in Japan
40252901E
02.06-.9A(C05)