

EPSON STYLUSTM SCAN 2000

All in One Product

English

All rights reserved. No part of this publication may be reproduced, stored in a retrieval system, or transmitted in any form or by any means, electronic, mechanical, photocopying, recording, or otherwise, without the prior written permission of SEIKO EPSON CORPORATION. The information contained herein is designed only for use with this EPSON printer. EPSON is not responsible for any use of this information as applied to other printers.

Neither SEIKO EPSON CORPORATION nor its affiliates shall be liable to the purchaser of this product or third parties for damages, losses, costs, or expenses incurred by the purchaser or third parties as a result of: accident, misuse, or abuse of this product or unauthorized modifications, repairs, or alterations to this product, or (excluding the U.S.) failure to strictly comply with SEIKO EPSON CORPORATION's operating and maintenance instructions.

SEIKO EPSON CORPORATION shall not be liable for any damages or problems arising from the use of any options or any consumable products other than those designated as Original EPSON Products or EPSON Approved Products by SEIKO EPSON CORPORATION.

SEIKO EPSON CORPORATION shall not be held liable for any damage resulting from electromagnetic interference that occurs from the use of any interface cables other than EPSON Approved Products by SEIKO EPSON CORPORATION.

EPSON is a registered trademark and EPSON ESC/P and EPSON Stylus are trademarks of SEIKO EPSON CORPORATION.

Microsoft and Windows are registered trademarks of Microsoft Corporation.

General Notice: Other product names used herein are for identification purposes only and may be trademarks of their respective owners. EPSON disclaims any and all rights in those marks.

Copyright © 1999 by SEIKO EPSON CORPORATION, Nagano, Japan.

Setup Guide

Declaration of Conformity

According to ISO/IEC Guide 22 and EN 45014

Manufacturer: SEIKO EPSON CORPORATION
Address: 3-5, Owa 3-chome, Suwa-shi,
Nagano-ken 392-8502 Japan
Representative: EPSON EUROPE B.V.
Address: Prof. J. H. Bavincklaan 5
1183 AT Amstelveen
The Netherlands

Declares that the Product:

Product Name: Multi Function Printer
Model: C120A

Conforms to the following Directive(s) and Norm(s):

Directive 89/336/EEC:
EN 55022 Class B
EN 61000-3-2
EN 61000-3-3
EN 50082-1
IEC 801-2
IEC 801-3
IEC 801-4

Directive 73/23/EEC:
EN 60950

June 1999

H. Horiuchi
President of EPSON EUROPE B.V.

Contents

Where to Find Information	4
Quick Start Manual (this manual)	4
Online Documentation	4
Online Help	4
Important Safety Instructions	4
A Few Precautions	5
ENERGY STAR Compliance	6
Symbols Used in the Manual	6
System Requirements	6
For PCs	6
For Macintosh computers	7
Setting Up Your Stylus Scan 2000	7
Attaching the Paper Support	8
Plugging in the EPSON Stylus Scan	8
Connecting the Stylus Scan to Your Computer	8
Installing the Drivers and Other Software in Your PC	9
Installing the Ink Cartridges	23
Checking the Stylus Scan	27
Loading Paper	27
Printing the Nozzle Check Pattern	28
Cleaning the Print Head	29
After Setup	30
Changing the Connection Port (for Windows 98)	30
Printing Your First Page	31
For Windows	31
For Macintosh	32
Ink Recommendations	33
Using the Online Manuals	33
Installing the Adobe Acrobat Reader	34
Accessing the Online Manuals	34
Customer Support	35

■ Where to Find Information

■ Setup Guide (this manual)

Contains information about how to set up your Stylus Scan 2000, install the Stylus Scan 2000 software and access your online documentation. It also provides instructions for daily operation. Keep this manual near your printer.

■ Online Documentation

The CD-ROMs supplied with the Stylus Scan 2000 include a set of online documentation in PDF format containing further information and reference tips.

■ Online Help

Provides you with detailed information and instructions on the Stylus Scan 2000 software for Windows that controls your printer. Online help will be automatically installed when you install the Stylus Scan 2000 software.

■ Important Safety Instructions

Read all of these instructions before using your EPSON Stylus Scan. Also be sure to follow all warnings and instructions marked on the Stylus Scan.

- Unplug the Stylus Scan before cleaning. Clean with a damp cloth only. Do not spill liquid on the Stylus Scan.
- Do not place the Stylus Scan on an unstable surface, or near a radiator or heat source.
- Do not block or cover the openings in the Stylus Scan's cabinet.
- Do not insert objects through the slots. Take care not to spill liquid on the Stylus Scan.
- Use only the type of power source indicated on the Stylus Scan's label.
- Connect all equipment to properly grounded power outlets. Avoid using outlets on the same circuit as air control systems, or other devices that consume large amounts of electricity and regularly switch on and off.
- Avoid electrical outlets controlled by wall switches or automatic timers.
- Keep the entire computer system away from potential sources of electromagnetic interference, such as loudspeakers and the base units of cordless telephones.
- Do not use a damaged or frayed power cord.
- If you use an extension cord with the Stylus Scan, make sure the total ampere rating of the devices plugged into the extension cord does not exceed the cord's ampere rating. Also, make sure the total ampere rating of all devices plugged into the wall outlet does not exceed the wall outlet's ampere rating.
- Do not attempt to service the EPSON Stylus Scan yourself.

- Unplug the Stylus Scan and refer servicing to qualified service personnel under the following conditions:

The power cord or plug is damaged; liquid has entered the Stylus Scan; the Stylus Scan has been dropped or the cabinet damaged; the Stylus Scan does not operate normally or exhibits a distinct change in performance.



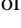
- To provide adequate short-circuit protection and over-current protection for this Stylus Scan, the building installation must be protected by a 16 Amp circuit breaker



This device contains batteries and should not therefore be disposed of with normal domestic waste. Please dispose of the device in accordance with local statutory regulation.

■ A Few Precautions

■ When using the Stylus Scan

- Do not put your hand inside the Stylus Scan or touch the ink cartridges during operation.
- Do not move the print head by hand. Doing so may damage the EPSON Stylus Scan.
- Always use the  power button to turn off the Stylus Scan. After pressing this button, the  power light flashes briefly then goes off. Do not unplug the Stylus Scan or turn off the power to the outlet until the  power light stops flashing.
- Before transporting the Stylus Scan, make sure the print head is in the home (far right) position and the ink cartridges are in place.

■ When handling the ink cartridges

- Keep ink cartridges out of the reach of children. Do not allow children to drink the ink or otherwise handle the cartridges.
- If ink gets on your skin, wash it off with soap and water. If ink gets into your eyes, flush eyes immediately with water.
- Do not shake the ink cartridges. Cartridges may leak if shaken.
- Install the ink cartridge immediately after you remove it from its package. Leaving the cartridge unpacked for a long time before use may result in reduced print quality.
- Once you install an ink cartridge, do not open the clamp or remove the cartridge except to replace it with a new one. Otherwise the cartridge may become unusable.
- Do not use an ink cartridge beyond the date printed on the cartridge carton. For best results, use up the ink cartridges within six months of installing them.
- Do not dismantle the ink cartridges or try to refill them. Doing so may damage the print head.

■ When choosing a place for the Stylus Scan

- Place the EPSON Stylus Scan on a flat, stable surface that extends beyond the Stylus Scan base in all directions. The Stylus Scan will not operate properly if it is tilted or at an angle.
- Avoid places subject to rapid changes in temperature and humidity. Also, keep the Stylus Scan away from direct sunlight, strong light, and heat sources.
- Avoid places subject to shocks and vibrations.
- Leave enough room around the Stylus Scan to allow for sufficient ventilation.
- Place the Stylus Scan near a wall outlet where the plug can be easily unplugged.

■ ENERGY STAR Compliance



As an ENERGY STAR Partner, EPSON has determined that this product meets the ENERGY STAR guidelines for energy efficiency.

The International ENERGY STAR Office Equipment Program is a voluntary partnership with the computer and office equipment industry to promote the introduction of energy-efficient personal computers, monitors, printers, fax machines, and copiers in an effort to reduce air pollution caused by power generation.

■ Symbols Used in the Manual



Warnings

must be followed carefully to avoid bodily injury.



Cautions

must be observed to avoid damage to your equipment.

Note:

contain important information and useful tips on the operation of your Stylus Scan.

■ System Requirements

■ For PCs

To use your EPSON Stylus Scan, you need Microsoft® Windows® 95, or Windows® 98; and CD-ROM drive and a shielded, twisted-pair parallel cable. If you want to connect your printer to a USB port, you need a Windows 98 pre-installed PC equipped with a USB port; and a shielded USB cable.

Your computer should also meet the following system requirements.

Minimum System Requirements	Recommended System
i486/25 MHz for Windows 95 i486/66 MHz for Windows 98	Pentium or higher processor
32 MB RAM	32 MB RAM or more for Windows 95 and 98
50 MB hard disk space for Windows 95, and 98	50 MB or more free disk space for Windows 95, and 98
VGA size, 16 bit color	SVGA or better 24 bit color

Your computer dealer can help you update your system if it does not meet these requirements.

■ For Macintosh computers

You can use this printer with the following Apple® Macintosh® computers. You also need a shielded USB cable.

Applicable computer models:

iMac Series (for USB)

Power Macintosh G3 (for USB)

Your Macintosh must also meet the following system requirements.

Note:

Macintosh can be connected to the Stylus Scan by using a USB cable only.

Minimum System Requirements	Recommended System
System 8.1 + iMac update	System 8.5.1 or later
7 MB of available memory 12 MB of available memory when background printing is turned on.	14 MB or more of available memory 23 MB of available memory when background printing is turned on.

Note:

- *The amount of available memory varies according to the number and kind of applications that are open. To see how much memory is available, choose **About This Computer** from the **Apple** menu and refer to the memory size (listed in kilobytes) under **Largest Unused Block** (1,024K=1 MB).*
- *The memory requirements above are for printing on Letter size paper. These requirements may vary depending on the size of the paper, the type of application you are using, and the complexity of the document you want to print.*

In addition to these system and memory requirements, you also need 10 MB of free hard disk space to install your printer software. To print, you need extra hard disk space amounting to about double the size of the file you want to print.

■ Setting Up Your Stylus Scan 2000

■ Attaching the Paper Support

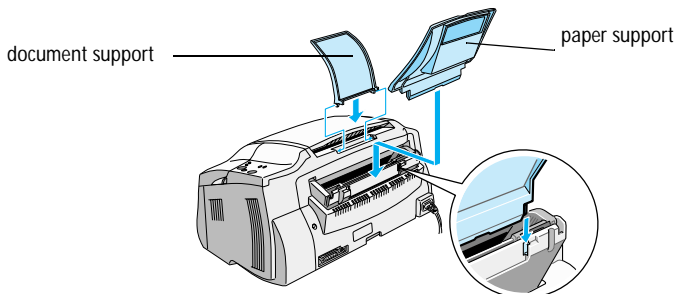
The EPSON Stylus Scan comes with two paper supports.

- Paper support (gray)


Fit the paper support into the slots at the rear of the EPSON Stylus Scan.

- Document support (transparent)

Carefully fit the document support into the holes at the rear of the EPSON Stylus Scan.



■ Plugging in the EPSON Stylus Scan

1. Make sure that the Stylus Scan is turned off. It is off when the  power button protrudes slightly from the surface of the control panel.
2. Check the label on the back of the Stylus Scan to make sure the voltage required by the Stylus Scan matches that of the electrical outlet you plug it into. Also, make sure that you have the correct power cable for your power source.



Caution:

It is not possible to change the Stylus Scan's voltage. If the rated voltage and your outlet voltage do not match, contact your dealer for assistance. Do not plug in the power cord.

3. If the power cord is not attached to the Stylus Scan, connect it to the AC inlet at the back of the Stylus Scan.
4. Plug the power cord into a properly grounded electrical outlet.

■ Connecting the Stylus Scan to Your Computer

Your Stylus Scan has two ports through which it can be connected to a computer; a parallel port and a USB port. Use the port appropriate for your computer.

Note:

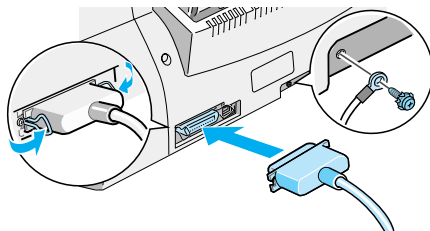
- *If your computer has both a parallel and USB port, be sure to follow the correct steps for connecting to the port you choose.*

- *Do not use the Stylus Scan's parallel port and USB port simultaneously. Connect the Stylus Scan to one computer at a time.*

■ Using the parallel port (for Windows 95 or 98)

To connect the Stylus Scan to your PC using the parallel port, you need a shielded, twisted-pair parallel cable. Follow these steps.

1. Make sure both the Stylus Scan and computer are turned off.
2. Plug the cable connector securely into the parallel interface connector at the rear of the Stylus Scan. Then squeeze the wire clips together until they lock in place on both sides.



3. Plug the other end of the cable into the computer's parallel interface. If there is a ground wire at the computer end of the cable, connect it to the ground connector at the back of the computer.

You are now ready to install the Stylus Scan drivers. For installation instructions, see "For Windows 95 or 98 with a parallel connection" on page 10.

■ Using the USB port (for Windows 98 or Macintosh)

To connect the Stylus Scan to your computer using the USB port, you must first install the Stylus Scan drivers.

See "For Windows 98 with a USB connection" on page 13 to install the drivers and connect the Stylus Scan to your Windows 98 computer using the USB port.

To install the software and connect the Stylus Scan to your Macintosh, see "Installing the Software in Your Macintosh" on page 19.

■ Installing the Drivers and Other Software in Your PC

Your Stylus Scan comes with the **EPSON Stylus Scan 2000 Software for Windows** CD-ROM which includes software for your Stylus Scan.

To print and scan with your Stylus Scan, you need to install the following software included on the CD-ROM.

■ EPSON SMART PANEL

Provides easy access to the Stylus Scan's scanning, printing, and copying features.

■ EPSON Stylus Scan 2000 Drivers

Printer Driver

Allows you to use the Stylus Scan's printer function.

EPSON Stylus Scan SF TWAIN

Allows you to use the Stylus Scan's scanner function.

The included CD-ROM also contains the following software.

- **Acrobat Reader**

This software enables you to read the manuals for EPSON SMART PANEL and WinFAX, or any other files that are in the Portable Document Format (PDF).

- **WinFax BASIC EDITION**

Includes applications that support the Stylus Scan's fax features and other special operations.

- **For Windows 95 or 98 with a parallel connection**

After connecting the Stylus Scan to your computer as described in "Using the parallel port (for Windows 95 or 98)" on page 9, follow the steps below to install the drivers and other software.

Note for users with a parallel connection:

Before installing the software on your computer, make sure there is no Stylus Scan driver already installed on your computer. If there is, see "Uninstalling the parallel driver" on page 30 to uninstall the software before following the steps below.

1. Turn on the computer and start Windows.

Note:

*If you turn on the EPSON Stylus Scan before turning on your PC, the computer may detect the Stylus Scan and display the **New Hardware Found** dialog box, or a similar wizard, following start-up. If this occurs, click the **Cancel** button to close the dialog box, and continue with installation as described below.*

2. Insert the **EPSON Stylus Scan 2000 Software for Windows** CD-ROM in the CD-ROM drive. Then the **Select Language** dialog box appears.

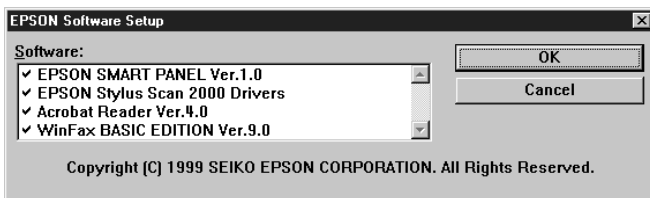


3. Select the language you want and click **OK**.

4. Click the **Add Software** button.



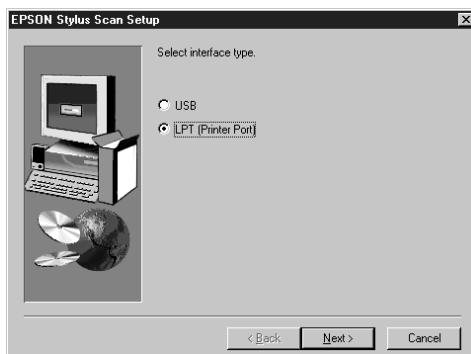
5. The **EPSON Software Setup** dialog box appears. Make sure there is a check mark next to **EPSON SMART PANEL** and **EPSON Stylus Scan 2000 Drivers**. Clear the check marks next to the names of any other software that you do not want to install.



6. Click **OK**.
7. Follow the on-screen instructions to install the **EPSON SMART PANEL**.
8. When the **EPSON SMART PANEL** installation is complete, the **EPSON Stylus Scan Setup** dialog box appears. Click **Next**.



9. In Windows 98, the following dialog box appears. Select **LPT (Printer Port)**, then click **Next** to begin installation. (If this dialog box does not appear, go to the next step.)



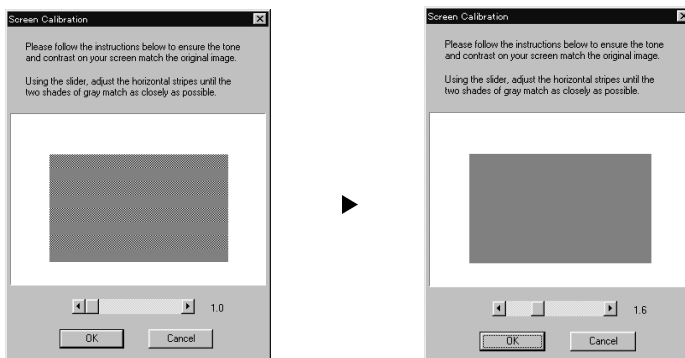
10. When installation is complete, click **OK** to start the EPSON Screen Calibration utility.



Note:


Be sure to calibrate your screen and Stylus Scan to ensure that the colors of reproduced images closely match the originals.

11. In the following window, move the slider to the right or left until the two shades of gray horizontal stripes match.



Note:

The gray stripes will not perfectly blend together; however, try to make the two tones match as closely as possible.

12. Click **OK** to register the calibration setting.
13. When the EPSON Stylus Scan Drivers installation is complete, installation for other applications begins automatically. Follow the on-screen instructions.
14. After all applications have been installed, a message appears asking you to restart your computer. Click **OK**.
15. Restart the computer, then turn on the Stylus Scan by pressing its  power button.

Note:

Do not change the printer name (leave it as Stylus Scan 2000), otherwise your Stylus Scan does not work correctly.

■ For Windows 98 with a USB connection

Before connecting the Stylus Scan to your Windows 98 computer using the USB port, you must first install the Stylus Scan software. This section guides you through the software installation and also includes instructions on connecting to your computer using the USB port. Follow the steps below.

Note:

The USB connection cannot be used with Windows 95.

1. Turn on the computer and start Windows 98.

Note:

If you turn on the EPSON Stylus Scan before turning on your computer, the computer may detect the Stylus Scan and display the **New Hardware Found** dialog box, or a similar wizard, following start-up. If this occurs, click the **Cancel** button to close the dialog box and remove the USB cable. Then continue with installation as described below.

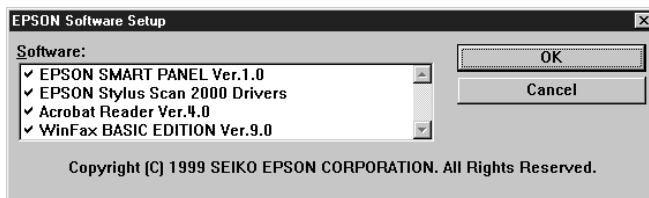
2. Insert the **EPSON Stylus Scan 2000 Software for Windows** CD-ROM in the CD-ROM drive. The **Select Language** dialog box appears.



3. Select the language you want and click **OK**.
4. Click the **Add Software** button.



5. The **EPSON Software Setup** dialog box appears. Make sure there is a check mark next to **EPSON SMART PANEL** and **EPSON Stylus Scan 2000 Drivers**. Clear the check marks next to the names of any other software that you do not want to install.

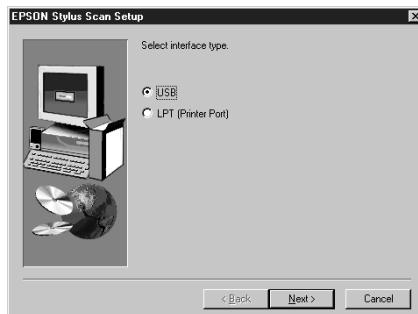


6. Click **OK**.

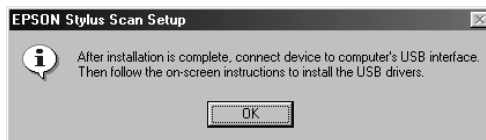
7. Follow the on-screen instructions to install the EPSON SMART PANEL.
8. When the EPSON SMART PANEL installation is complete, the **EPSON Stylus Scan Setup** dialog box appears. Click **Next**.



9. The following dialog box appears. Select **USB**, then click **Next**.

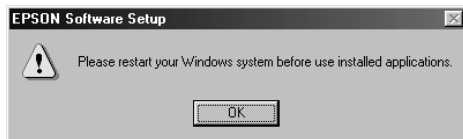



10. The following message appears.



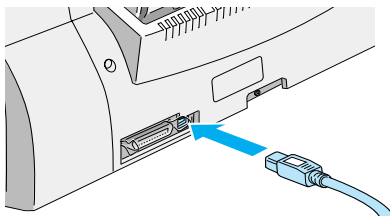
Click **OK**. Installation for other applications begins automatically. Follow the on-screen instructions.

11. After the applications have been installed, the following message appears.



Click **OK** and restart your computer. Then turn on the Stylus Scan by pressing the  power button.

12. Plug the appropriate end of the cable into the USB port on the back of the Stylus Scan. (The end that fits the Stylus Scan has a different shape from the end that fits the computer.)



Note:

To connect the Stylus Scan to a USB port, you need a standard shielded USB cable.

13. Connect the other end of the cable to the computer's USB port.

Note:

If you have more than one USB hub connected to your computer, connect the Stylus Scan to the hub that is connected directly to your computer. If the EPSON Stylus Scan does not work properly when connected to the hub, connect it directly to the computer's USB port.

14. If the following dialog box appears, click **Next**. Otherwise skip to step 19.



15. The following dialog box appears. Click **Next**.



16. In the following dialog box, clear all the check boxes, then click **Next**.



17. In the following dialog box, click **Next** to install the required drivers.



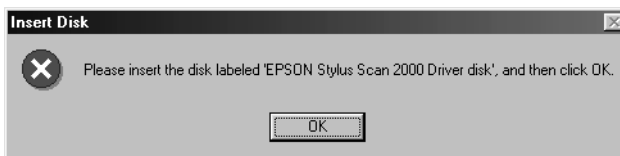
Note:

*If a dialog box appears asking you to specify the location of the Windows 98 CD-ROM, insert the Windows 98 CD-ROM into the CD-ROM drive and click **OK**.*

18. Click **Finish** to complete the USB Hub driver installation.



19. The following message appears.



Make sure the **EPSON Stylus Scan 2000 Software for Windows** CD-ROM is still in your CD-ROM drive, and click **OK**.

20. The following dialog box appears.



In the Copy files from box, type **D:\EPSON\ENGLISH** (or your preferred language). Then click **OK**. If your CD-ROM drive has a drive letter other than **D**, substitute the appropriate letter. The system installs the required driver.

21. To install the printer driver and scanner driver, follow the same procedure as step 19 to 20.

Note:

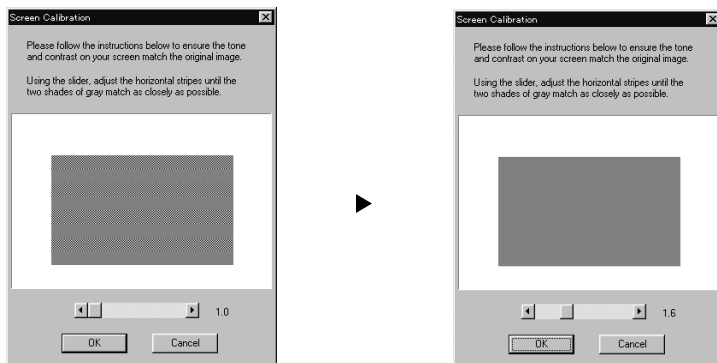
Depending on your computer, you should repeat the step 21 again.

22. During the driver installation, the EPSON Screen Calibration utility starts automatically.

Note:

Be sure to calibrate your screen and Stylus Scan to ensure that the colors of reproduced images closely match the originals.

23. In the following window, move the slider to the right or left until the two shades of gray horizontal stripes match.

**Note:**

The gray stripes will not perfectly blend together; however, try to make the two tones match as closely as possible.

24. Click **OK** to register the calibration setting.
 25. Follow the on-screen instructions to complete the installation.

Note:

Do not change the printer name (leave it as Stylus Scan 2000), otherwise your Stylus Scan will not work correctly.

■ Installing the Software in Your Macintosh

To print and scan with your Stylus Scan, you need to install the following software included on the **EPSON Stylus Scan 2000 Software for Macintosh** CD-ROM shipped with your Stylus Scan. This software must be installed before connecting the Stylus Scan to your Macintosh.

■ EPSON Stylus Scan 2000 Drivers

Printer Driver

Allows you to use the Stylus Scan's printer function.

EPSON Stylus Scan SF TWAIN

Allows you to use the Stylus Scan's scanner function.

The included CD-ROM also contains the following software.

- **EPSON PersonalCopy**
Enables you to easily create high quality color copies.
- **Presto! PageManager for EPSON**
Allows you to easily access the Stylus Scan's scanning and printing features.

■ Acrobat Reader

This software enables you to read the manual for Presto! PageManager for EPSON, or any other file that is in the Portable Document Format (PDF).

Follow these steps to install your Stylus Scan software, and to connect the Stylus Scan to your Macintosh.



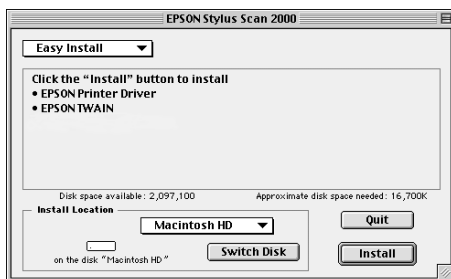
Caution:

Turn off all virus protection programs before you install your EPSON Stylus Scan software.

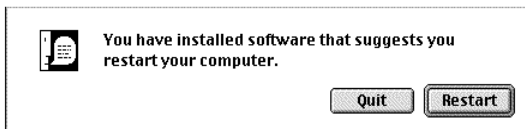
Note for iMac users:

If you are using Mac OS 8.1, you need to install the iMac Update 1.0 before installing the Stylus Scan software. This update, along with complete update information, is available online from the Apple Web site. If you are using Mac OS 8.5, you do not need to install the iMac Update.

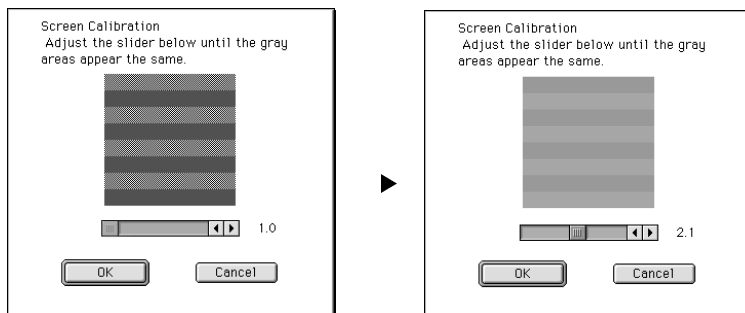
1. Turn on your Macintosh and insert the **EPSON Stylus Scan 2000 Software for Macintosh** CD-ROM in the CD-ROM drive. The EPSON window appears.
2. To install EPSON PersonalCopy, Presto! PageManager for EPSON, or Acrobat Reader, double-click the appropriate folder. Then double-click the folder of your preferred language, and double-click the corresponding installer icon. Follow the on-screen instructions.
3. After installation of the programs in the previous step is complete, double-click the **EPSON Stylus Scan Drivers** folder.
4. Double-click the folder for your preferred language, then double-click the **EPSON Stylus Scan 2000** icon. The following dialog box appears.



5. Click **Install**, then follow the on-screen instructions.
6. When the following dialog box appears, click **Restart**.

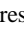


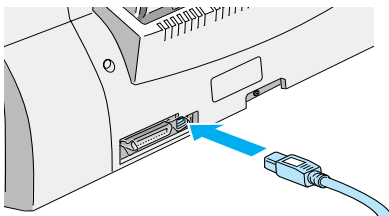
7. The EPSON Screen Calibration utility starts automatically. In the following window, move the slider to the right or left until the two shades of the gray horizontal stripes match.



Note:

The gray stripes will not perfectly blend together; however, try to make the two tones match as closely as possible.

8. Click **OK** to register the calibration setting. The computer restarts automatically.
9. Turn on the Stylus Scan by pressing its  power button.
10. Plug the appropriate end of the USB cable into the USB port at the back of the Stylus Scan. (The end that fits the Stylus Scan has a different shape from the end that fits the computer.)



Note:

To connect the Stylus Scan to a USB port, use a standard shielded USB cable.

11. Connect the other end of the cable to the computer's USB port.

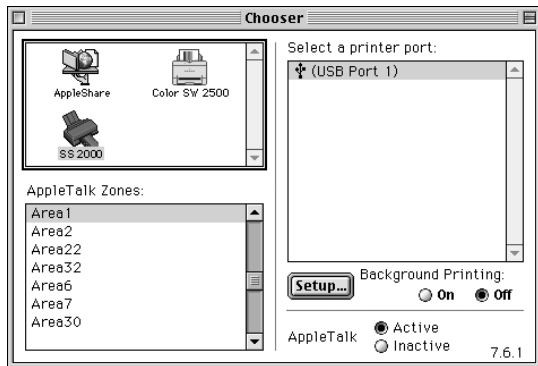
Note:

If you have more than one USB hub connected to your computer, connect the Stylus Scan to the hub that is connected directly to your computer. If the EPSON Stylus Scan does not work properly when connected to the hub, connect it directly to the computer's USB port.

■ Selecting your EPSON Stylus Scan in the Chooser

After you install the printer software in your Macintosh, you need to open the **Chooser** to select your Stylus Scan. You have to choose the Stylus Scan the first time you use it or whenever you want to switch to another printer. Your Macintosh always prints using the last printer selected.

1. Select **Chooser** from the **Apple** menu. Then click the **Stylus Scan** icon, and the port your Stylus Scan is connected to.



2. Click the **Background Printing** radio button to turn background printing on or off. When background printing is on, you can use your Macintosh while it is preparing a document for printing. You must turn on background printing to use the EPSON StatusMonitor utility to manage print jobs.
3. Close the **Chooser**.

■ Notice for using USB Ports

If you connect several units of the same type, each unit is assigned a separate USB port number, such as USB port 1, USB port 2, and so on. Performing any of the following functions may cause the USB port numbers for the individual units to change.

- Restarting your Macintosh
- Turning the Stylus Scan off and on
- Detaching and reconnecting the USB cable

Please check the assigned USB port number in the **Chooser** after performing any of these functions.

Before turning on your USB hub (if necessary) and your Stylus Scan, turn on the Macintosh and wait until the desktop appears.

When unplugging the USB cord, wait a few seconds before plugging it back in.

Otherwise, the Macintosh may not recognize your Stylus Scan and you may be unable to print correctly.

■ Installing the Ink Cartridges

Before installing the ink cartridges, note the following.



Warning:

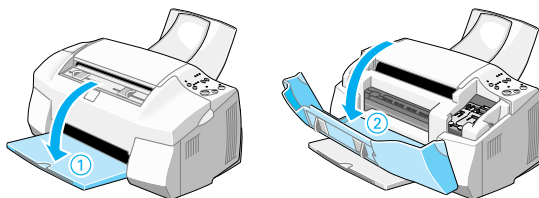
The ink cartridges are self-contained units. Under ordinary use, ink will not leak from a cartridge. If ink does get on your hands, wash them thoroughly with soap and water. If ink gets into your eyes, flush them immediately with water.

Note:

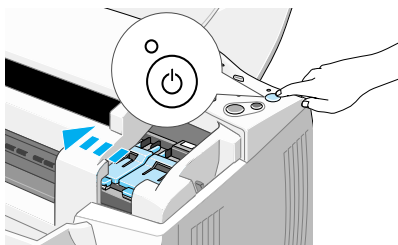
- ▣ *Do not open the ink cartridge packages until just before you install them, or the ink may dry up.*
- ▣ *Always use new ink cartridges. Reinstalling partially empty ink cartridges causes the printer to send inaccurate information to the Status Monitor regarding the amount of ink remaining.*
- ▣ *Use the ink cartridges packed with your printer the first time you install ink cartridges, otherwise the printer may not charge ink properly.*

Follow the steps below to install the ink cartridges.

1. Lower the output tray, then lower the front cover.



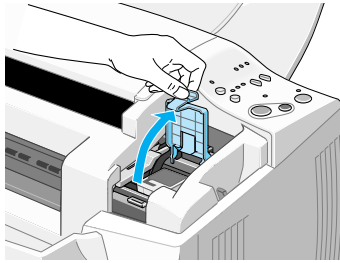
2. Turn on the Stylus Scan by pressing its ⏻ power button. The print head moves slightly to the left to the color ink cartridge installation position.



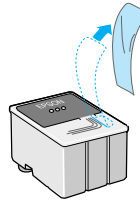
Caution:

Do not move the print head by hand. Otherwise you may damage the EPSON Stylus Scan.

3. Lift up the ink cartridge clamp.

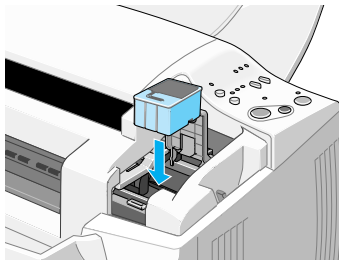



4. Open the color ink cartridge package that came with your Stylus Scan. Remove only the yellow tape seal from the ink cartridge.

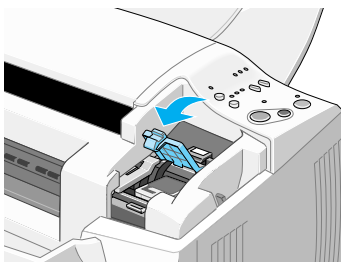


Caution:


- ❑ *Be sure to remove the yellow tape seal from the cartridge before installing it; otherwise the cartridge may become unusable.*
 - ❑ *Do not remove the blue portion of the tape seal from the cartridge; otherwise the cartridge may become clogged and cannot print.*
 - ❑ *Do not remove the tape seal from the bottom of the cartridge; otherwise, ink will leak.*
5. Hold the color ink cartridge with its label facing up. Set the cartridge gently into the holder. Do not press down on it.

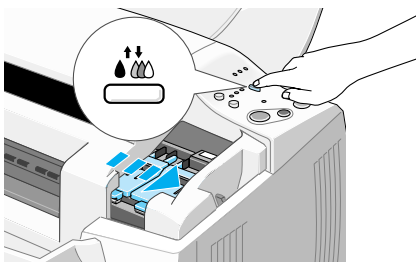


6. Press the cartridge clamp down until it locks into place. The  ink out light goes off after you close the clamp.

**Caution:**

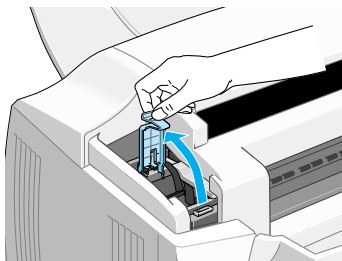
Once you install the ink cartridges, do not open their clamps again until you replace the ink cartridges. Otherwise, the cartridges may become unusable.

7. Press the  cleaning button and release quickly. The print head moves left to the black ink cartridge installation position.

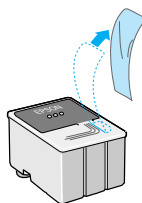
**Caution:**

Install both ink cartridges. If either of the cartridges is not installed, the EPSON Stylus Scan will not work.

8. Lift up the ink cartridge clamp.



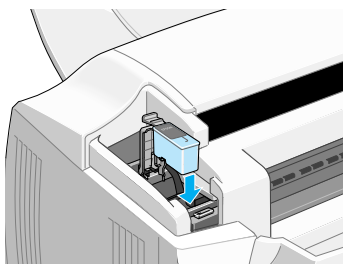
9. Open the black ink cartridge package that came with your Stylus Scan. Remove only the yellow tape seal from the ink cartridge.



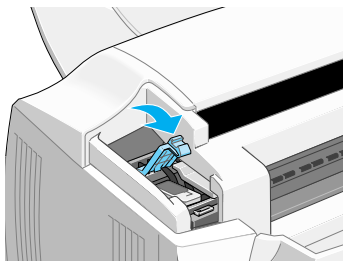
Caution:

- *Be sure to remove the yellow tape seal from the cartridge before installing it; otherwise the cartridge may become unusable.*
- *Do not remove the blue portion of the tape seal from the cartridge; otherwise the cartridge may become clogged and unable to print.*
- *Do not remove the tape seal from the bottom of the cartridge; otherwise, ink will leak.*

10. Hold the black ink cartridge with its label facing up. Set the cartridge gently into the holder. Do not press down on it.




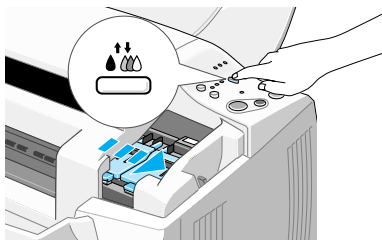
11. Press the cartridge clamp down until it locks into place.





Caution:

Once you install the ink cartridges, do not open their clamps again until you replace the ink cartridges. Otherwise, the cartridges may become unusable.


12. Press the  cleaning button and release quickly. The EPSON Stylus Scan moves the print head and begins charging the ink delivery system.



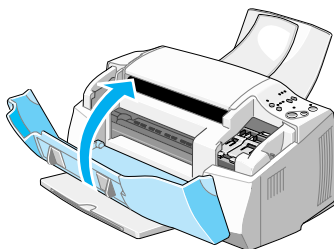
While the ink is charging, the  power light flashes and the Stylus Scan produces a variety of mechanical sounds. These sounds are normal. When the ink delivery system has been charged, the print head returns to its home (far right) position and the  power light comes on.



Caution:

Never turn off the EPSON Stylus Scan while the  power light is flashing.

13. Close the front cover.



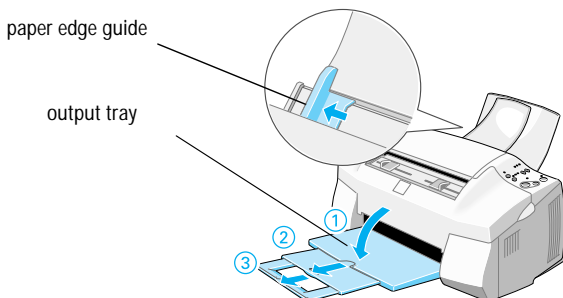
■ Checking the Stylus Scan

Before using your EPSON Stylus Scan, make sure it is working correctly by printing a nozzle check pattern. You may also need to clean the print head.

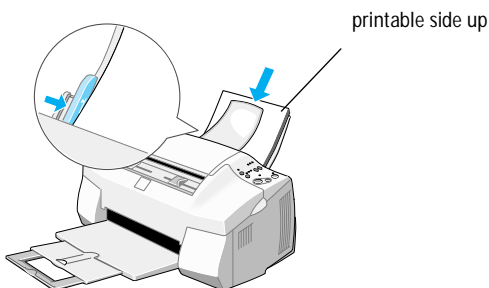
■ Loading Paper

Follow the steps below to load A4 or Letter size plain paper in the paper feeder. The Stylus Scan prints onto this paper when printing and making copies.

1. Lower the output tray and slide out the extension. Next, slide the paper edge guide to adjust the width of the loading area so that it is slightly wider than the width of your paper.



2. Fan a stack of paper; then tap it on a flat surface to even the edges.
3. Load the stack of paper with the printable side up and the right edge of the paper resting against the right side of the paper feeder. Then slide the edge guide against the edge of the paper.





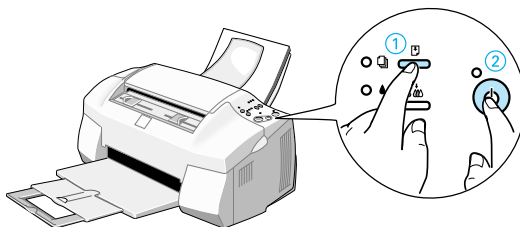
Note:

- Always load paper into the paper feeder short edge first.
- Make sure the paper stack fits under the arrow mark inside the edge guide.

■ Printing the Nozzle Check Pattern

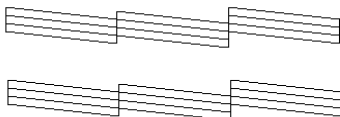
Follow the on-screen instructions to check the print-head nozzles. If you do not see any on-screen instructions, follow these instructions.

Hold down the  load/eject button (① in the illustration below) and press the  power button (② in the illustration below) to turn on the EPSON Stylus Scan. Then release both buttons. The Stylus Scan starts printing a nozzle check page.

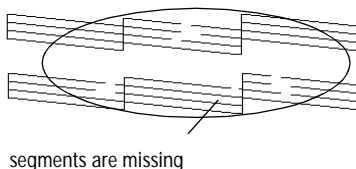


Here are sample printouts.

Good sample


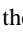
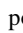



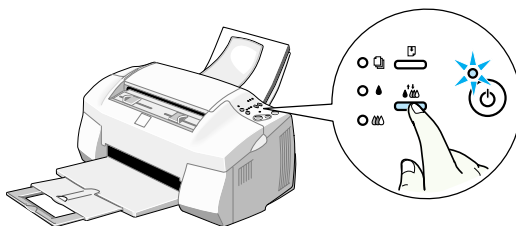
Print head needs to be cleaned

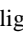


If the nozzle check page does not print satisfactorily (for example, if any segment of the printed lines is missing), then clean the print head as explained below. If the printout was satisfactory, you are ready to print your first page. See “Printing Your First Page” on page 31 for instructions.

■ Cleaning the Print Head

1. Make sure that the  power light is on and that both the  black and  color ink out lights are off.
2. Hold down the  cleaning button for three seconds, then release it.



The Stylus Scan starts cleaning the print head and the  power light begins flashing. Print head cleaning takes about one minute to complete.

**Caution:**

Never turn off the EPSON Stylus Scan while the ⏻ power light is flashing. Doing so may damage the Stylus Scan.

3. When the ⏻ power light stops flashing, print a few lines from a document to confirm that the head is clean and to reset the cleaning cycle.

If the print quality still has not improved after replacing the ink cartridges, contact your dealer.

■ After Setup

■ Changing the Connection Port (for Windows 98)

If you need to change the port from which the Stylus Scan is connected to your computer, you must first uninstall the Stylus Scan drivers currently installed in your PC. Follow the steps below to uninstall the Stylus Scan drivers.

■ Uninstalling the USB driver

1. Click **Start**, point to **Settings** and **Control Panel**.
2. Double-click the **Scanners and Cameras** icon.
3. Select **EPSON Stylus Scan 2000**, then click **Remove**.
4. Click **OK** and close the dialog box.
5. Double-click the **Add/Remove Programs** icon.
6. Select **EPSON Printer Software**, then click **Add/Remove**.
7. Select **EPSON Stylus Scan 2000**, then click **OK**. Follow the on-screen instructions.
8. After uninstall is complete, select **EPSON USB Printer Devices** and click **Add/Remove**. Then follow the on-screen instructions. The computer restarts automatically.

To connect the Stylus Scan using the parallel port, see “Using the parallel port (for Windows 95 or 98)” on page 9.

■ Uninstalling the parallel driver

1. Click **Start**, point to **Programs**, select **EPSON Stylus Scan**, then click **Uninstall EPSON Stylus Scan SF TWAIN**.
2. Follow the on-screen instructions.
3. After uninstall is complete, click the **Start** button, point to **Settings**, then point to **Control Panel**.
4. Double-click the **Add/Remove Programs** icon, then select **EPSON Printer Software** and click **Add/Remove**.
5. Select **EPSON Stylus Scan 2000**, then click **OK**.
6. Follow the on-screen instructions.
7. After completing uninstall, restart your computer.

To connect the Stylus Scan using the USB port, see “Using the USB port (for Windows 98 or Macintosh)” on page 9.

■ Printing Your First Page

After making sure your printer is operating correctly, you are ready to print your first page. To familiarize yourself with the printer software, we recommend printing the **README** file provided with your printer software. The **README** file contains the latest information about your printer software. Follow the instructions for Windows or Macintosh in this section.

■ For Windows

Follow these steps to print the **README** file.

1. Click **Start**, point to **Programs**, point to **Epson** (for Windows 95, and 98) or **EPSON Printers** (for Windows NT 4.0), and then click **EPSON Stylus Scan 2000 Readme**.
2. Click **Print** on the **File** menu. The **Print** dialog box appears.
3. Make sure your printer is selected and then click **Properties**, or **Options**. You may need to click a combination of these buttons. The driver settings window appears.

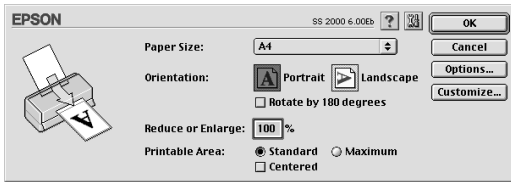



4. Click the **Main** tab if necessary, then click anywhere in the **Media Type** box and select the media you loaded in the printer.
5. Select **Color** as the Ink setting.
6. Make sure the Mode option is set to **Automatic**. When **Automatic** is selected, the printer software optimizes other settings according to the **Media Type** and **Ink** settings you make.
7. Click **OK** at the bottom of the window to return to the Print dialog box.
8. Click **Close**, **OK**, or **Print** to print. You may need to click a combination of these buttons.

■ For Macintosh

Follow these steps to print the **README** file.

1. Insert the printer software CD.
2. Open the **EPSON** folder and double-click the **README** file.
3. Choose **Page Setup** from the **File** menu. The following dialog box appears.

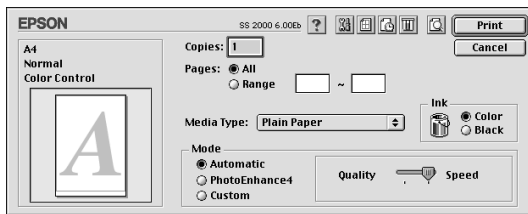


4. Select the paper size you loaded in the printer from the **Paper Size** list.
5. Select  **Portrait** as the Orientation option.
6. After making your settings, click **OK** to close the **Page Setup** dialog box.

Note:

*You cannot print from the **Page Setup** dialog box. You can only print from the **Print** dialog box.*

7. Choose **Print** from the **File** menu. The **Print** dialog box appears.



8. Select **Plain Paper** from the **Media Type** list.
9. Select **Color** as the Ink option.
10. Make sure **Automatic** is selected as the Mode setting. When **Automatic** is selected, the printer software optimizes other settings according to the **Media Type** and **Ink** settings you make.
11. Click **Print** to start printing.

■ Ink Recommendations

EPSON's unique print head with its innovative Piezo technology enables high printing speeds. In addition, each ink dot that is placed on the page has sharp edges with no satellite effect. EPSON ink has been specially developed for use with printers of the EPSON Stylus COLOR range. By using the original ink, the excellent properties of the EPSON Stylus Scan 2000 are guaranteed:

- Extremely long life of the print heads
- Brilliance of color
- Photographic quality
- High acceptance of different types of paper
- Smudge-proof
- High tolerance of environmental conditions



Caution:

- *EPSON recommends the use of original EPSON ink cartridges only. Other products not manufactured by EPSON may cause damage to your printer not covered by EPSON's warranties.*
- *Do not use an ink cartridge if the date on the package has expired.*

■ Using the Online Manuals

The CD-ROM shipped with your printer includes a number of online manuals in PDF format (PDF = Portable Document Format). PDF files can be used on various platforms (e.g. Windows, Macintosh, Unix etc.) and are electronic manuals with the same layout, illustrations, tables etc. to be found in a printed manual. You can display the online manual on your computer screen and print it out on any connected printer, if required.

The following online manual is available:

- **User's Guide**
Contains complete information on the printer's functions, maintenance, troubleshooting and technical specifications. Read this manual, if you require detailed information on the Stylus Scan 2000.

To access an online manual you need to install the Acrobat Reader on your system. The Adobe Acrobat Reader program is an easy-to-use application program for displaying and printing online manuals. It offers a wide range of features which allow you to use the online manuals without difficulty to find any desired information. You can read the information online on your computer screen or print it out on your printer for later reference. If you need complete information on the Adobe Acrobat Reader, refer to its online help.

If the Acrobat Reader is already installed on your system, you can skip the next section.

Note:

If the Adobe Acrobat Reader is not installed on your system, the manual will not open and an error message will be displayed.

■ Installing the Adobe Acrobat Reader

1. Make sure the printer is off and your computer is switched on.
2. Insert the EPSON printer software CD-ROM into your computer's CD-ROM drive.

Windows 95/98:

The setup program on the CD-ROM will be started automatically and displays the start screen. If the setup program is not started automatically, click the **Start** button, then click **Run** and enter the command **E:\Start.exe** to start the setup program.

Note:

*If your CD-ROM drive has a drive letter other than **E**, substitute the appropriate letter.*

Macintosh:

Display the contents of the CD-ROM on your computer screen and branch to the Acrobat Reader folder.

3. Select the preferred language.
4. **PC:**
Select **Online manuals**, followed by **Install Acrobat Reader** and follow the on-screen instructions.

Macintosh:

Start the Installer and follow the on-screen instructions.

After the Acrobat Reader has been installed on your system, you can access the online manuals.

■ Accessing the Online Manuals

The setup program on the CD-ROM offers two possibilities to access the online manuals: from the CD-ROM or from your computer hard disk.

Note:

Before you can access the online manual from your hard disk, you first have to install it on your system.

1. Insert the EPSON printer software CD-ROM into your computer's CD-ROM drive.

Windows 95/98:

The setup program on the CD-ROM will be started automatically and displays the start screen. If the setup program is not started automatically, click the **Start** button, then click **Run** and enter the command **E:\Start.exe** to start the setup program.

Note:

*If your CD-ROM drive has a drive letter other than **E**, substitute the appropriate letter.*

Note:

*If your CD-ROM drive has a drive letter other than **E**, substitute the appropriate letter.*

Macintosh:

Display the contents of the CD-ROM on your computer screen and branch to the Acrobat Reader folder.

2. Select the preferred language.

3. **PC:**

Select **Online manuals**. The setup program displays the name of the available online manual. Select the preferred online manual.

Select **manual name - Read** if you wish to open the manual from the CD-ROM. The Acrobat Reader will be started automatically and the online manual opened.

Note:

*If you wish to copy the online manuals to your system's hard disk, select **manual name - PC installation**. You can delete the manual from the hard disk at a later date by selecting **Software** in the **Control Panel** and double-clicking **EPSON Printer Software** in the list box. Then, click the **Utility** tab, select **Stylus Scan 2000 manuals** and click the **OK** button. When you are asked whether you want to delete the printer driver, click **No**. The manuals are deleted.*

Once the manuals have been installed on the hard disk, proceed as follows:

- **Windows 95/98:**

Click the **Start** button, point to **Programs**, then point to **EPSON**. Click on the name of the online manual. The Acrobat Reader will be started automatically and the online manual opened.

- **Macintosh:**

Double-click on the preferred online manual to open the manual from the CD-ROM. To install the online manual on your computer's hard disk, select the manual and drag it onto your computer's desktop.

■ Customer Support

EPSON's Service and Support hotline is available should you require urgent help. You will find the telephone number and further important information for your country in the Service and Support brochure provided with your printer.