

EPSON STYLUSTM SCAN 2500

All in One Product

English

All rights reserved. No part of this publication may be reproduced, stored in a retrieval system, or transmitted in any form or by any means, electronic, mechanical, photocopying, recording, or otherwise, without the prior written permission of SEIKO EPSON CORPORATION. The information contained herein is designed only for use with this EPSON product. EPSON is not responsible for any use of this information as applied to other products.

Neither SEIKO EPSON CORPORATION nor its affiliates shall be liable to the purchaser of this product or third parties for damages, losses, costs, or expenses incurred by the purchaser or third parties as a result of: accident, misuse, or abuse of this product or unauthorized modifications, repairs, or alterations to this product, or (excluding the U.S.) failure to strictly comply with SEIKO EPSON CORPORATION's operating and maintenance instructions.

SEIKO EPSON CORPORATION shall not be liable for any damages or problems arising from the use of any options or any consumable products other than those designated as Original EPSON Products or EPSON Approved Products by SEIKO EPSON CORPORATION.

SEIKO EPSON CORPORATION shall not be held liable for any damage resulting from electromagnetic interference that occurs from the use of any interface cables other than EPSON Approved Products by SEIKO EPSON CORPORATION.

EPSON is a registered trademark and EPSON ESC/P and EPSON Stylus are trademarks of SEIKO EPSON CORPORATION.

Microsoft and Windows are registered trademarks of Microsoft Corporation.

General Notice: Other product names used herein are for identification purposes only and may be trademarks of their respective owners. EPSON disclaims any and all rights in those marks.

Copyright © 1999 by SEIKO EPSON CORPORATION, Nagano, Japan.

Setup Guide

Declaration of Conformity

According to ISO/IEC Guide 22 and EN 45014

Manufacturer: SEIKO EPSON CORPORATION
Address: 3-5, Owa 3-chome, Suwa-shi,
Nagano-ken 392-8502 Japan
Representative: EPSON EUROPE B.V.
Address: Prof. J. H. Bavincklaan 5
1183 AT Amstelveen
The Netherlands

Declares that the Product:

Product Name: Multi Function Printer
Model: C130A

Conforms to the following Directive(s) and Norm(s):

Directive 89/336/EEC:

EN 55022 Class B
EN 61000-3-2
EN 61000-3-3
EN 50082-1
IEC 801-2
IEC 801-3
IEC 801-4

Directive 73/23/EEC:

EN 60950

August 1999

H. Horiuchi
President of EPSON EUROPE B.V.

Contents

Where to Find Information	4
Setup Guide (this manual)	4
Online Documentation	4
Online Help	4
Important Safety Instructions	4
A Few Precautions	5
When using the Stylus Scan	5
When handling the ink cartridges	5
When choosing a place for the Stylus Scan	6
ENERGY STAR Compliance	6
Symbols Used in the Manual	6
System Requirements	7
For PCs	7
For Macintosh computers	7
Setting up your Stylus Scan 2500	8
Releasing the Transportation Lock	8
Attaching the Paper Support	9
Plugging in the Stylus Scan	9
Connecting the Stylus Scan to Your Computer	10
Changing the Language Used on the LCD Panel Display	10
Installing the Drivers and Other Software in Your PC	11
Installing the Software in Your Macintosh	21
Installing Ink Cartridges	24
Checking the Stylus Scan	27
Loading Paper	27
Printing a Nozzle Check Pattern	28
Cleaning the Print Head	29
After Setup	30
Changing the Connection Port (for Windows 98)	30
Uninstalling the USB driver	30
Uninstalling the parallel driver	30
Printing Your First Page	31
For Windows	31
For Macintosh	32
Ink Recommendations	33
Using the Online Manuals	33
Installing the Adobe Acrobat Reader	34
Accessing the Online Manuals	34
Customer Support	35

Where to Find Information

■ Setup Guide (this manual)

Contains information about how to set up your Stylus Scan 2500, install the Stylus Scan 2500 software and access your online documentation. It also provides instructions for daily operation. Keep this manual near your printer.

■ Online Documentation

The CD-ROMs supplied with the Stylus Scan 2500 include a set of online documentation in PDF format containing further information and reference tips.

■ Online Help

Provides you with detailed information and instructions on the Stylus Scan 2500 software for Windows that controls your printer. Online help will be automatically installed when you install the Stylus Scan 2500 software.

Important Safety Instructions

Read all of these instructions before starting to use your Stylus Scan. Also be sure to follow all warnings and instructions marked on the Stylus Scan.

- Unplug the Stylus Scan before cleaning. Clean with a damp cloth only. Do not use cleaning fluid or detergents on the Stylus Scan.
- Do not place the Stylus Scan on an unstable surface, or near a radiator or heat source.
- Do not block or cover the openings in the Stylus Scan's cabinet.
- Do not insert objects through the slots. Do not spill liquid on the Stylus Scan.
- Use only the type of power source indicated on the Stylus Scan's label.
- Connect all equipment to properly grounded power outlets. Avoid using outlets on the same circuit as air control systems or other high- load office devices that regularly switch on and off.
- Avoid electrical outlets controlled by wall switches or automatic timers.
- Keep the entire computer system away from potential sources of electromagnetic interference, such as loudspeakers and the base units of cordless telephones.
- Do not use a damaged or frayed power cord.
- If you use an extension cord with the Stylus Scan, make sure the total amperage of the devices plugged into the extension cord does not exceed the cord's ampere rating. Also, make sure the total ampere rating of all devices plugged into the wall outlet does not exceed the wall outlet's ampere rating.
- Do not attempt to service the Stylus Scan yourself.

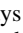
- Unplug the Stylus Scan and refer servicing to qualified service personnel under any of the following conditions:
The power cord or plug is damaged; liquid has entered the Stylus Scan; the Stylus Scan has been dropped or the cabinet damaged; the Stylus Scan does not operate normally or exhibits a distinct change in performance.
- To provide adequate short-circuit protection and over-current protection for this Stylus Scan, the building installation must be protected by a 16 Amp circuit breaker.



This device contains batteries and should not therefore be disposed of with normal domestic waste. Please dispose of the device in accordance with local statutory regulation.

A Few Precautions

■ When using the Stylus Scan

- Do not put your hand inside the Stylus Scan or touch the ink cartridges during operation.
- Do not move the print head by hand. Doing so may damage the Stylus Scan.
- Always use the  power button to turn off the Stylus Scan. When this button is pressed, the **Operate** light flashes briefly then goes off. Do not unplug the Stylus Scan or turn off the power to the outlet until the **Operate** light stops flashing. The scanner carriage must be secured with the Transportation Lock.
- Before transporting the Stylus Scan, make sure the print head is in the home (far right) position and the ink cartridges are in place. The scanner carriage must be secured with the Transportation Lock.

■ When handling the ink cartridges

- Keep ink cartridges out of the reach of children. Do not allow children to drink the ink or otherwise handle the cartridges.
- If ink gets on your skin, wash it off with soap and water. If ink gets into your eyes, flush your eyes immediately with water. If a discomfort or vision problems remain after a thorough flushing, see a doctor immediately.
- Do not shake the ink cartridges. Cartridges may leak if shaken.
- Install the ink cartridge immediately after you remove it from its package. Leaving the cartridge unpacked for a long time before use may result in reduced print quality.
- Once you install an ink cartridge, do not open the clamp or remove the cartridge except to replace it with a new one. The cartridge becomes unusable when you open the clamp.
- Do not use an ink cartridge beyond the date printed on the cartridge carton. For best results, use the ink cartridges completely within six months of installing them.

- Do not dismantle the ink cartridges or try to refill them. Doing so may damage the print head.

■ When choosing a place for the Stylus Scan

- Place the Stylus Scan on a flat, stable surface that extends beyond the base of the machine in all directions. The Stylus Scan will not operate properly if it is tilted or at an angle.
- Avoid places subject to rapid changes in temperature and humidity. Also keep the Stylus Scan away from direct sunlight, strong light, and heat sources.
- Avoid places subject to shocks and vibrations.
- Leave enough room around the Stylus Scan to allow for sufficient ventilation.
- Place the Stylus Scan near a wall outlet where the power cord can be easily unplugged.

ENERGY STAR Compliance



As an ENERGY STAR Partner, EPSON has determined that this product meets the ENERGY STAR guidelines for energy efficiency.

The International ENERGY STAR Office Equipment Program is a voluntary partnership with the computer and office equipment industry to promote the introduction of energy-efficient personal computers,

monitors, printers, fax machines, and copiers in an effort to reduce air pollution caused by power generation.

Symbols Used in the Manual



Warnings

must be followed carefully to avoid bodily injury.



Cautions

must be observed to avoid damage to your equipment.

Note:

contain important information and useful tips on the operation of your Stylus Scan.

System Requirements

■ For PCs

To use your printer, you need Microsoft® Windows® 95, or Windows® 98; a CD-ROM drive and a shielded, twisted-pair parallel cable. If you want to connect your printer to a USB port, you need a Windows 98 pre-installed PC equipped with a USB port; and a shielded USB cable.

Your computer should also meet the following system requirements.

Minimum System Requirements	Recommended System
i486/25 MHz for Windows 95 i486/66 MHz for Windows 98	Pentium or higher processor
32 MB RAM	32 MB RAM or more for Windows 98 and 95
50 MB hard disk space for Windows 98, and 95	50 MB or more free disk space for Windows 98, and 95
VGA size, 16 bit color	SVGA or better 24 bit color

Your computer dealer can help you update your system if it does not meet these requirements.

■ For Macintosh computers

You can use this printer with the following Apple® Macintosh® computers. You also need a shielded USB cable.

Supported computer models

- iMac Series (for USB)
- USB equipped Power Macintosh G3

Your Macintosh must meet the following system requirements.

Minimum System Requirements	Recommended System
System 8.1 + iMac update 1.0	System 8.5.1 or later
7 MB of available memory 12 MB of available memory when background printing is turned on.	14 MB or more of available memory 23 MB of available memory when background printing is turned on.

Note:Note:

- *The amount of available memory varies according to the number and kind of applications that are open. To see how much memory is available, choose **About This Computer** from the **Apple** menu and refer to the memory size (listed in kilobytes) under **Largest Unused Block** (1,024K=1 MB).*

- *The memory requirements above are for printing on Letter size paper. These requirements may vary depending on the size of the paper, the type of application you are using, and the complexity of the document you want to print.*

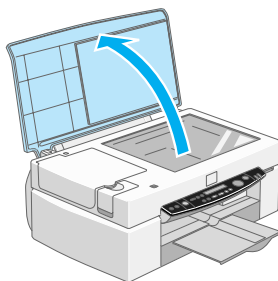
In addition to these system and memory requirements, you also need 10 MB of free hard disk space to install your printer software. To print, you need extra hard disk space amounting to about double the size of the file you want to print.

Setting up your Stylus Scan 2500

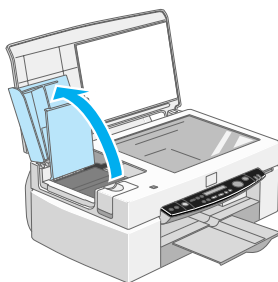
■ Releasing the Transportation Lock

Before connecting the Stylus Scan to a power source, you must release the transportation lock. To release the transportation lock, follow the steps below.

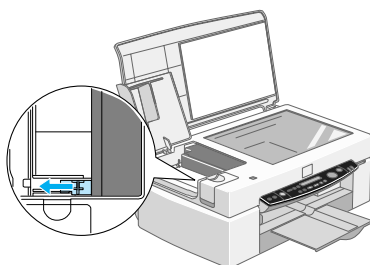
1. Open the document cover.



2. Open the maintenance cover.



3. Slide the transportation lock out, as illustrated below, to release the scanner carriage.



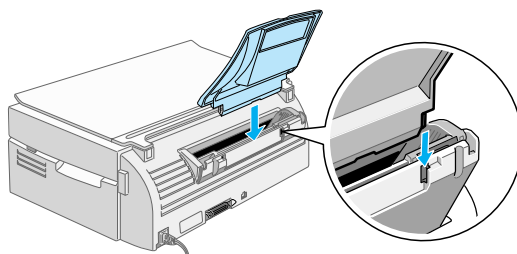
Note:

Slide the transportation lock in to lock the scanner carriage before transporting the Stylus Scan.

4. Close the maintenance cover and document cover.

■ Attaching the Paper Support

Insert the paper support into the slots at the rear of the Stylus Scan.



■ Plugging in the Stylus Scan

1. Make sure that the Stylus Scan is turned off.
2. Check the label on the back of the Stylus Scan to make sure the voltage required by the Stylus Scan matches that of the electrical outlet you plug it into. Also, make sure that you have the correct power cable for your power source.



Caution:

It is not possible to change the Stylus Scan's voltage. If the rated voltage and your outlet voltage do not match, contact your dealer for assistance. Do not plug in the power cord.

3. If the power cord is not attached to the Stylus Scan, connect it to the AC inlet at the back of the Stylus Scan.
4. Plug the power cord into a properly grounded electrical outlet.

■ Connecting the Stylus Scan to Your Computer

Your Stylus Scan has two ports through which it can be connected to a computer; a parallel port and a USB port. Use the port appropriate for your computer.

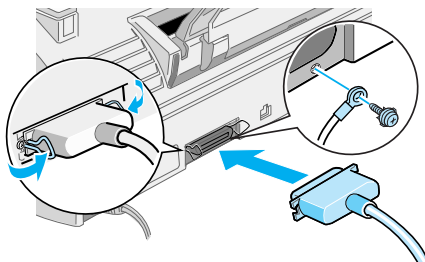
Note:Note:

- *If your computer has both a parallel and USB port, be sure to follow the correct steps for connecting to the port you choose.*
- *Do not use the Stylus Scan's parallel port and USB port simultaneously. Connect the Stylus Scan to one computer at a time.*

■ Using the parallel port (for Windows 95 or 98)

To connect the Stylus Scan to your PC using the parallel port, you need a shielded, twisted-pair parallel cable. Follow these steps.

1. Make sure both the Stylus Scan and computer are turned off.
2. Plug the cable connector securely into the parallel interface connector at the rear of the Stylus Scan. Then squeeze the wire clips together until they lock in place on both sides. If there is a ground wire at the end of the cable, connect it to the ground connector at the back of the Stylus Scan.



3. Plug the other end of the cable into the computer's parallel interface.

You are now ready to install the Stylus Scan drivers. For installation instructions, see "For Windows 95 or 98 with a parallel connection" auf Seite -11.


■ Using the USB port (for Windows 98 or Macintosh)

To connect the Stylus Scan to your computer using the USB port, you must first install the Stylus Scan drivers.

See "For Windows 98 with a USB connection" auf Seite -14 to install the drivers and connect the Stylus Scan to your Windows 98 computer using the USB port.

To install the software and connect the Stylus Scan to your Macintosh, see "Installing the Software in Your Macintosh" auf Seite -21.

■ Changing the Language Used on the LCD Panel Display.

1. Turn the Stylus Scan on by pressing the  power button.
2. Press the **Quality** and **B&W/Color** button at the same time to enter the **Menu Mode**.

3. Press the + button under **Copies 3** times until **Lang** appears.
4. Press the **Copy** button until your preferred language is selected.
5. Press the **Quality** button to complete your selection.

■ Installing the Drivers and Other Software in Your PC

Your Stylus Scan comes with the **EPSON Stylus Scan 2500 Software for Windows** CD-ROM which includes software for your Stylus Scan.

To print and scan with your Stylus Scan, you need to install the following software included on the CD-ROM.

- **EPSON SMART PANEL**
Provides easy access to the Stylus Scan's scanning, printing, and copying features.
- **EPSON Stylus Scan 2500 Drivers**

Printer Driver

Allows you to use the Stylus Scan's printer function.

EPSON Stylus Scan FB TWAIN

EPSON Stylus Scan FB TWAIN controls the Stylus Scan's scanner function.

EPSON Scanner Monitor (except Windows 98 USB systems)

This software detects when the "Scan Button" is pressed on the Stylus Scan panel.

The "Scan Button" automatically starts the software selected in the EPSON Scanner Monitor.

The included CD-ROM also contains the following software.

- **Acrobat Reader**
This software enables you to read the manuals for EPSON SMART PANEL and WinFAX, or any other files that are in the Portable Document Format (PDF).
- **WinFax BASIC EDITION**
Includes applications that support the Stylus Scan's fax features and other special operations.

■ For Windows 95 or 98 with a parallel connection

After connecting the Stylus Scan to your computer as described in "Using the parallel port (for Windows 95 or 98)" auf Seite -10, follow the steps below to install the drivers and other software.

Note: Note for users with a parallel connection:

- *Before installing the software on your computer, make sure there is no Stylus Scan driver already installed on your computer. If there is, see "Uninstalling the parallel driver" auf Seite -30 to uninstall the software before following the steps below.*
 - *Make sure the ECP mode is turned on in your computer's BIOS. For details see your computer's documentation.*
1. Turn on the computer and start Windows.

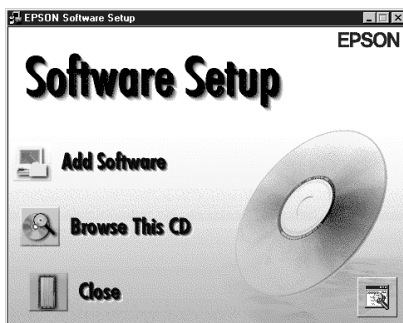
Note:

*If you turn on the Stylus Scan before turning on your PC, the computer may detect the Stylus Scan and display the New Hardware Found dialog box, or a similar wizard, following start-up. If this occurs, click the **Cancel** button to close the dialog box, and continue with installation as described below.*

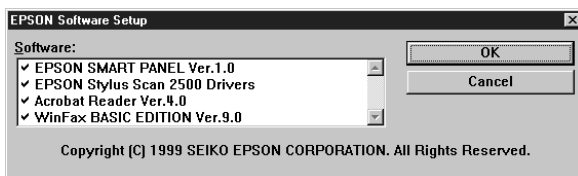
2. Insert the **EPSON Stylus Scan 2500 Software for Windows** CD-ROM in the CD-ROM drive. Then the Select Language dialog box appears.



3. Select the language you want and click **OK**.
4. Click the **Add Software** button.

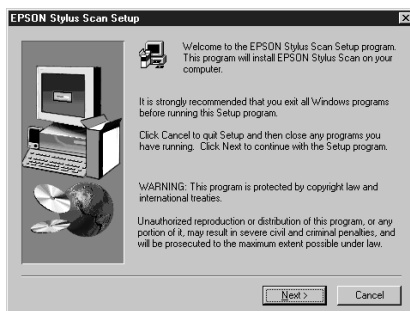


5. The EPSON Software Setup dialog box appears. Make sure there is a check mark next to **EPSON SMART PANEL** and **EPSON Stylus Scan 2500 Drivers**. Clear the check marks next to the names of any other software that you do not want to install.

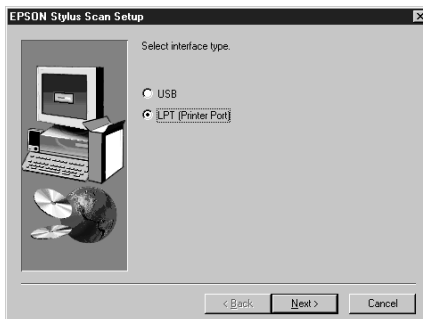


6. Click **OK**.
7. Follow the on-screen instructions to install the EPSON SMART PANEL.

8. When the EPSON SMART PANEL installation is complete, the EPSON Stylus Scan Setup dialog box appears. Click **Next**.



9. In Windows 98, the following dialog box appears. Select **LPT (Printer Port)**, then click **Next** to begin installation. (If this dialog box does not appear, go to the next step.)



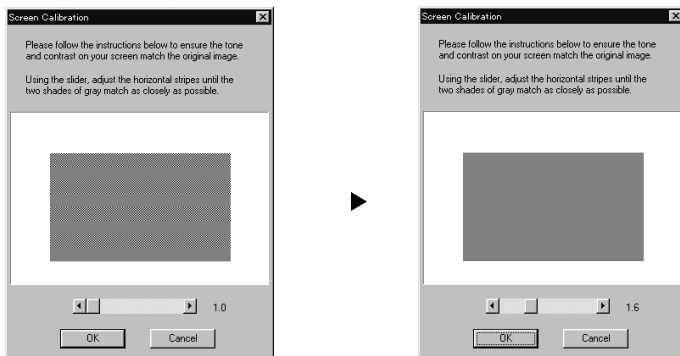
10. When installation is complete, click **OK** to start the EPSON Screen Calibration utility.




Note:

Be sure to calibrate your screen and Stylus Scan to ensure that the colors of reproduced images closely match the originals.

11. In the following window, move the slider to the right or left until the two shades of gray horizontal stripes match.

**Note:**

The gray stripes will not perfectly blend together; however, try to make the two tones match as closely as possible.

12. Click **OK** to register the calibration setting.
13. When the EPSON Stylus Scan Drivers installation is complete, installation for other applications begins automatically. Follow the on-screen instructions.
14. After all applications have been installed, a message appears asking you to restart your computer. Click **OK**.
15. Restart the computer, then turn on the Stylus Scan by pressing its  power button.

Note:

Do not change the printer name (leave it as EPSON Stylus Scan 2500), otherwise your Stylus Scan does not work correctly.

■ For Windows 98 with a USB connection

Before connecting the Stylus Scan to your Windows 98 computer using the USB port, you must first install the Stylus Scan software. This section guides you through the software installation and also includes instructions on connecting to your computer using the USB port. Follow the steps below.

Note:

The USB connection cannot be used with Windows 95.

1. Make sure the Stylus Scan is off, and that it is not connected to your computer. Then turn on the computer and start Windows 98.

Note:

*If you turn on the Stylus Scan before turning on your computer, the computer may detect the Stylus Scan and display the New Hardware Found dialog box, or a similar wizard, following start-up. If this occurs, click the **Cancel** button to close the dialog box, and remove the USB cable. Then continue with installation as described below.*

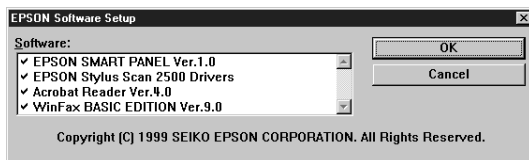
2. Insert the **EPSON Stylus Scan 2500 Software for Windows** CD-ROM in the CD-ROM drive. The Select Language dialog box appears.



3. Select the language you want and click **OK**.
4. Click the **Add Software** button.



5. The EPSON Software Setup dialog box appears. Make sure there is a check mark next to **EPSON SMART PANEL** and **EPSON Stylus Scan 2500 Drivers**. Clear the check marks next to the names of any other software that you do not want to install.

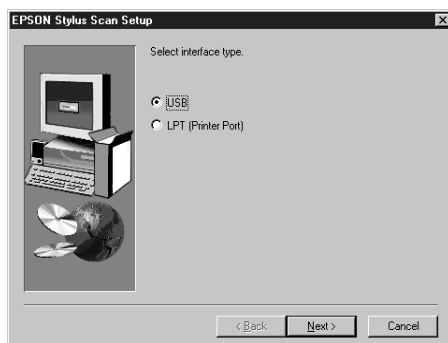


6. Click **OK**.
7. Follow the on-screen instructions to install the EPSON SMART PANEL.

8. When the EPSON SMART PANEL installation is complete, the EPSON Stylus Scan Setup dialog box appears. Click **Next**.



9. The following dialog box appears. Select **USB**, then click **Next**.

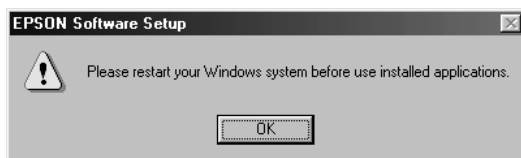



10. The following message appears.



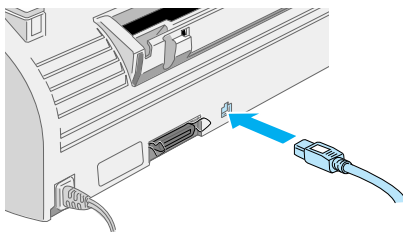
Click **OK**. Installation for other applications begins automatically. Follow the on-screen instructions.

11. After the applications have been installed, the following message appears.



Click **OK** and restart your computer. Then turn on the Stylus Scan by pressing the  power button.

12. Plug the appropriate end of the cable into the USB port on the back of the Stylus Scan. (The end that fits the Stylus Scan has a different shape from the end that fits the computer.)



Note:

To connect the Stylus Scan to a USB port, you need a standard shielded USB cable.

13. Connect the other end of the cable to the computer's USB port.

Note:

If you have more than one USB hub connected to your computer, connect the Stylus Scan to the hub that is connected directly to your computer. If the Stylus Scan does not work properly when connected to the hub, connect it directly to the computer's USB port.

14. If the following dialog box appears, click **Next**. Otherwise skip to step 19.



15. The following dialog box appears. Click **Next**.



16. In the following dialog box, clear all the check boxes, then click **Next**.



17. In the following dialog box, click **Next** to install the required drivers.



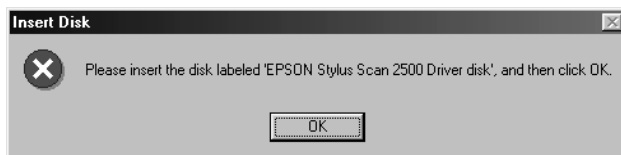
Note:

*If a dialog box appears asking you to specify the location of the Windows 98 CD-ROM, insert the Windows 98 CD-ROM into the CD-ROM drive and click **OK**.*

18. Click **Finish** to complete the USB Hub driver installation.

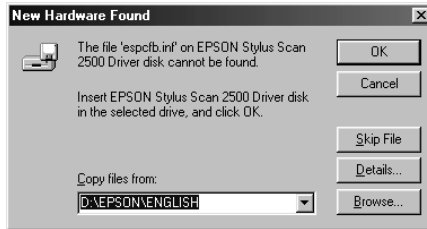


19. The following message appears.



Make sure the **EPSON Stylus Scan 2500 Software for Windows** CD-ROM is still in your CD-ROM drive, and click **OK**.

20. The following dialog box appears.



In the Copy files from box, type **D:\EPSON\ENGLISH** (or your preferred language). Then click **OK**. If your CD-ROM drive has a drive letter other than **D**, substitute the appropriate letter. The system installs the required driver.

21. To install the printer driver and scanner driver, follow the same procedure as step 19 to 20.

Note:

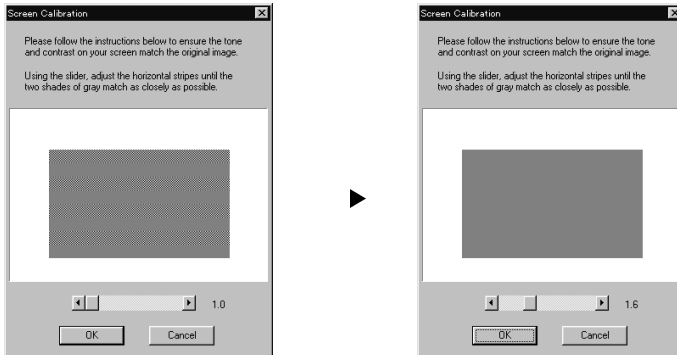
Depending on your computer, you should repeat the step 21 again.

22. During the driver installation, the EPSON Screen Calibration utility starts automatically.

Note:

Be sure to calibrate your screen and Stylus Scan to ensure that the colors of reproduced images closely match the originals.

23. In the following window, move the slider to the right or left until the two shades of gray horizontal stripes match.



Note:

The gray stripes will not perfectly blend together; however, try to make the two tones match as closely as possible.

24. Click **OK** to register the calibration setting.
25. Follow the on-screen instructions to complete the installation.

Note:

Do not change the printer name (leave it as EPSON Stylus Scan 2500), otherwise your Stylus Scan will not work correctly.

■ Installing the Software in Your Macintosh

To print and scan with your Stylus Scan, you need to install the following software included on the **EPSON Stylus Scan 2500 Software for Macintosh** CD-ROM shipped with your Stylus Scan. This software must be installed before connecting the Stylus Scan to your Macintosh.

■ EPSON Stylus Scan 2500 Drivers

Printer Driver

Allows you to use the Stylus Scan's printer function.

EPSON Stylus Scan FB TWAIN

EPSON Stylus Scan FB TWAIN controls the Stylus Scan's scanner function.

EPSON Scanner Monitor

This software detects when the "Scan Button" is pressed on the Stylus Scan panel. The "Scan Button" automatically starts the software selected in the EPSON Scanner Monitor.

The included CD-ROM also contains the following software.

■ PersonalCopy

Enables you to easily create high quality color copies.

■ Presto! PageManager for EPSON

Allows you to easily access the Stylus Scan's scanning and printing features.

■ Acrobat Reader

This software enables you to read the manual for Presto! PageManager for EPSON, or any other file that is in the Portable Document Format (PDF).

Follow these steps to install your Stylus Scan software, and to connect the Stylus Scan to your Macintosh.



Caution:

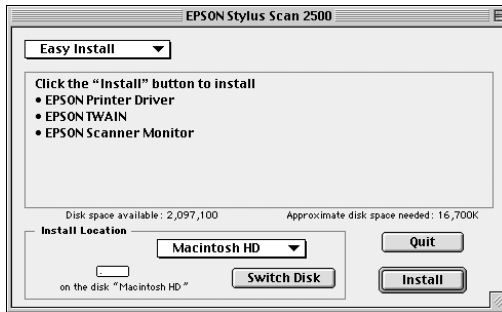
Turn off all virus protection programs before you install your EPSON Stylus Scan software.

Note: **Note for iMac users:**

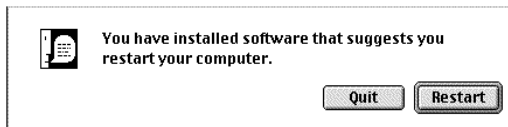
If you are using Mac OS 8.1, you need to install the iMac Update 1.0 before installing the Stylus Scan software. This update, along with complete update information, is available online from the Apple Web site. If you are using Mac OS 8.5, you do not need to install the iMac Update 1.0.

1. Turn on your Macintosh and insert the **EPSON Stylus Scan 2500 Software for Macintosh** CD-ROM in the CD-ROM drive. The EPSON window appears.
2. To install PersonalCopy, Presto! PageManager for EPSON, or Acrobat Reader, double-click the appropriate folder. Then double-click the folder of your preferred language, and double-click the corresponding installer icon. Follow the on-screen instructions.

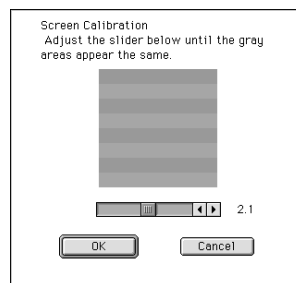
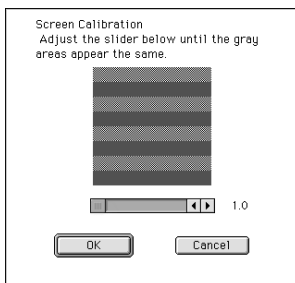
3. After installation of the programs in the previous step is complete, double-click the **EPSON Stylus Scan Drivers** folder.
4. Double-click the folder for your preferred language, then double-click the **EPSON Stylus Scan 2500** icon. The following dialog box appears.



5. Click **Install**, then follow the on-screen instructions.
6. When the following dialog box appears, click **Restart**.




7. The EPSON Screen Calibration utility starts automatically. In the following window, move the slider to the right or left until the two shades of the gray horizontal stripes match.

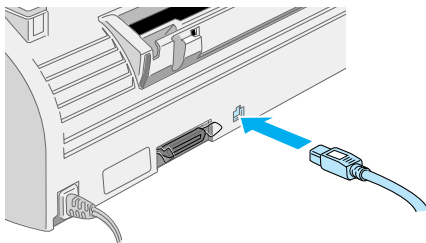


Note:

The gray stripes will not perfectly blend together; however, try to make the two tones match as closely as possible.

8. Click **OK** to register the calibration setting. The computer restarts automatically.
9. Turn on the Stylus Scan by pressing its  power button.

10. Plug the appropriate end of the USB cable into the USB port at the back of the Stylus Scan. (The end that fits the Stylus Scan has a different shape from the end that fits the computer.)



Note:

To connect the Stylus Scan to a USB port, use a standard shielded USB cable.

11. Connect the other end of the cable to the computer's USB port.

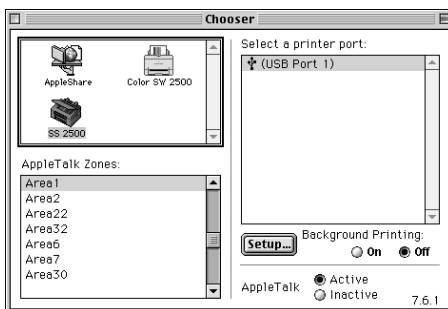
Note:

If you have more than one USB hub connected to your computer, connect the Stylus Scan to the hub that is connected directly to your computer. If the Stylus Scan does not work properly when connected to the hub, connect it directly to the computer's USB port.

■ Selecting your Stylus Scan in the Chooser

After you install the printer software in your Macintosh, you need to open the Chooser to select your Stylus Scan. You have to choose the Stylus Scan the first time you use it or whenever you want to switch to another printer. Your Macintosh always prints using the last printer selected.

1. Select **Chooser** from the Apple menu. Then click the **Stylus Scan** icon, and the port your Stylus Scan is connected to.



2. Click the **Background Printing** radio button to turn background printing on or off.

When background printing is on, you can use your Macintosh while it is preparing a document for printing. You must turn on background printing to use the EPSON StatusMonitor utility to manage print jobs.

3. Close the Chooser.

■ Notice for using USB Ports

If you connect several units of the same type, each unit is assigned a separate USB port number, such as USB port 1, USB port 2, and so on. Performing any of the following functions may cause the USB port numbers for the individual units to change.

- Restarting your Macintosh
- Turning the Stylus Scan off and on
- Detaching and reconnecting the USB cable

Please check the assigned USB port number in the Chooser after performing any of these functions.

Before turning on your USB hub (if necessary) and your Stylus Scan, turn on the Macintosh and wait until the desktop appears.

When unplugging the USB cord, wait a few seconds before plugging it back in.

Otherwise, the Macintosh may not recognize your Stylus Scan and you may be unable to print correctly.

Installing Ink Cartridges

Before installing the ink cartridges, note the following.



Warning:

The ink cartridges are self-contained units. Under ordinary use, ink will not leak from a cartridge. If ink does get on your hands, wash them thoroughly with soap and water. If ink gets into your eyes, flush them immediately with water. If discomfort or vision problems remain after a thorough flushing, see a doctor immediately.

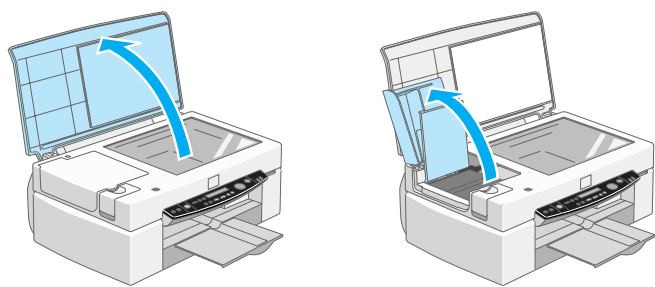
Note:

- *Do not open the ink cartridge packages until just before you install them, or the ink may dry up.*
- *Always use new ink cartridges. Reinstalling partially empty ink cartridges causes the printer to send inaccurate information to the Status Monitor regarding the amount of ink remaining.*
- *Use the ink cartridges packed with your printer the first time you install ink cartridges, otherwise the printer may not charge ink properly.*

Follow the steps below to install the ink cartridges.

1. Make sure the Stylus Scan is turned on.

- 2. Open the document cover and the maintenance cover. The scanner carriage moves out of the way automatically.

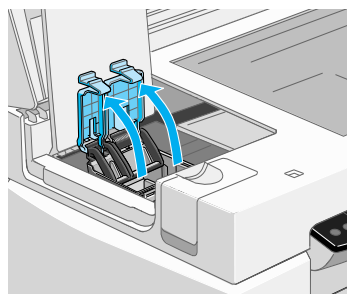


The print head moves to the left, to the ink cartridge installation position.

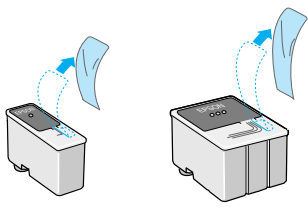


Caution:
Do not move the print head by hand. Doing so may damage the Stylus Scan.

- 3. Lift up the ink cartridge clamp.



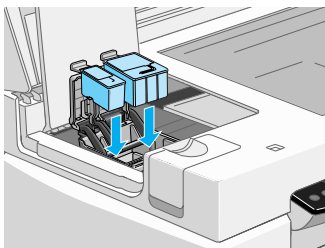
- 4. Open the ink cartridge packages. Next, remove the yellow tape seals from the cartridges.



**Caution:**

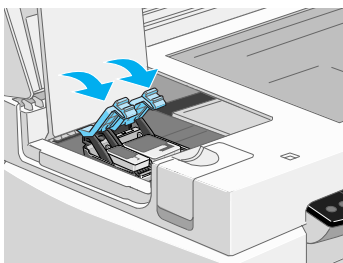
- ❑ *Remove the yellow tape seals from the cartridges before installing them; otherwise the cartridges will be damaged and will become unusable.*
- ❑ *Do not remove the blue portion of the tape seals from the cartridges; otherwise the cartridges will clog and become unusable.*
- ❑ *Do not remove the tape seals from the bottom of the cartridges; otherwise, ink will leak.*

5. Place the cartridges gently into their holders with the labels face-up. The color ink cartridge goes on the right and the black goes on the left. Do not press down on the cartridges.

**Note:**


Install both ink cartridges. If either of the cartridges is not installed, the Stylus Scan will not work.

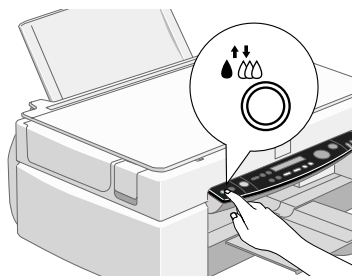
6. Press the ink cartridge clamps down until they lock in place.

**Caution:**

Once you install the ink cartridges, do not open the clamps again until you need to replace the ink cartridges. Opening the clamps makes the cartridges unusable.

7. Close the maintenance and document covers. The scanner carriage will return to the home position.

8. Press the  cleaning button. The Stylus Scan print head will move, and the ink delivery system will begin charging the ink.



The ink charging process takes about one minute to complete, during which time the **Operate** light flashes and the Stylus Scan produces a variety of mechanical sounds. These sounds are normal. When the ink delivery system has been charged, the print head returns to its home (far right) position and the **Operate** light stays on.



Caution:

*Never turn off the Stylus Scan while the **Operate** light is flashing.*

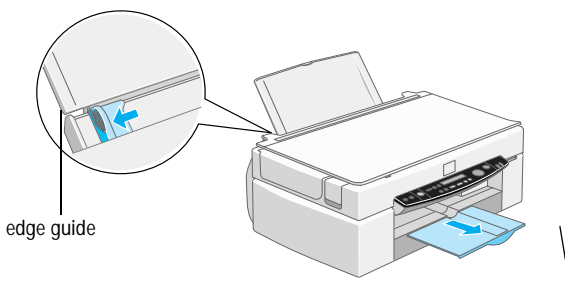
Checking the Stylus Scan

Before using your Stylus Scan, make sure it is working correctly by print a nozzle check pattern. You may also need to clean the print head.

■ Loading Paper

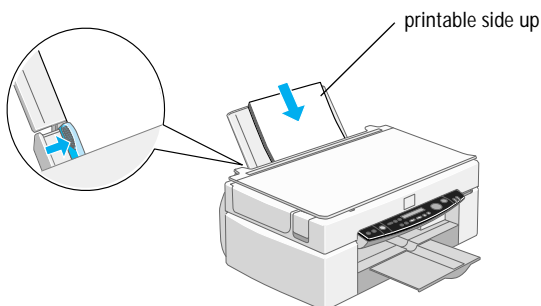
Follow these steps to load plain paper into the Stylus Scan.

1. Slide out the output tray. Next, slide the left edge guide so that the distance between the edge guides is slightly wider than the width of your paper. If you load long paper, pull out the paper support extension.



2. Fan a stack of paper; then tap it on a flat surface to even the edges.

3. Load the stack of paper with the printable side up and the right edge of the paper resting against the right side of the sheet feeder. Slide the left edge guide against the edge of the paper.


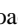


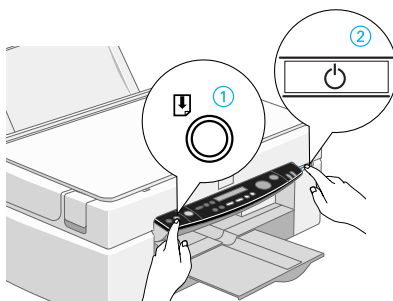
Note:

- ▣ Always load paper into the sheet feeder short edge first.
- ▣ Make sure the paper stack fits under the arrow mark inside the edge guide.

■ Printing a Nozzle Check Pattern

Follow the on-screen instructions to check the print-head nozzles. If the on-screen instructions do not appear on your system, follow the instructions below.

Hold down the  load/eject button (① in the illustration below) and press the  power button (② in the illustration below) to turn on the Stylus Scan, then release both buttons. The Stylus Scan begins printing a nozzle check page.

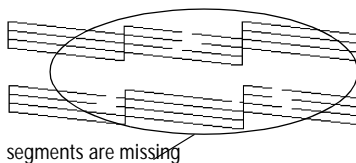


Here are sample printouts.

Good sample




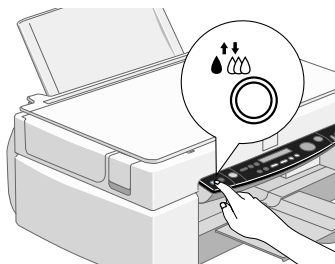
Print head needs to be cleaned



If the nozzle check page does not print satisfactorily (for example, if any segment of the printed lines is missing), then you should clean the print head as explained below. If the printout was satisfactory, you are ready to print your first page.

■ Cleaning the Print Head

1. Make sure that the **Operate** light is on and that an ink out message is not displayed on the LCD panel.
2. Hold down the  cleaning button for three seconds.



The Stylus Scan starts cleaning the print head and the **Operate** light begins flashing. Print head cleaning takes about one minute to complete.



Caution:

*Never turn off the Stylus Scan while the **Operate** light is flashing. Doing so may damage the Stylus Scan.*

3. When the **Operate** light stops flashing, print a few lines from a document to confirm that the head is clean and to reset the cleaning cycle.

If print quality hasn't improved after checking the nozzles and cleaning four or five times, contact your dealer.

After Setup

■ Changing the Connection Port (for Windows 98)

If you need to change the port from which the Stylus Scan is connected to your computer, you must first uninstall the Stylus Scan drivers currently installed in your PC.

Follow the steps below to uninstall the Stylus Scan drivers.

■ Uninstalling the USB driver

1. Click **Start**, point to **Settings** and **Control Panel**.
2. Double-click the **Scanners and Cameras** icon.
3. Select **EPSON Stylus Scan 2500**, then click **Remove**.
4. Click **OK** and close the dialog box.
5. Double-click the **Add/Remove Programs** icon.
6. Select **EPSON Printer Software**, then click **Add/Remove**.
7. Select **EPSON Stylus Scan 2500**, then click **OK**. Follow the on-screen instructions.
8. After uninstall is complete, select **EPSON USB Printer Devices** and click **Add/Remove**. Then follow the on-screen instructions. The computer restarts automatically.

To connect the Stylus Scan using the parallel port, see "Using the parallel port (for Windows 95 or 98)" auf Seite -10.

■ Uninstalling the parallel driver

1. Click the **Start** button, point to **Programs**, select **EPSON Stylus Scan**, then click **Uninstall EPSON Stylus Scan FB TWAIN**.
2. Follow the on-screen instructions.
3. After uninstall is complete, click the **Start** button, point to **Settings**, then point to **Control Panel**.
4. Double-click the **Add/Remove Programs** icon, then select **EPSON Printer Software** and click **Add/Remove**.
5. Select **EPSON Stylus Scan 2500**, then click **OK**.
6. Follow the on-screen instructions.
7. After uninstalling, restart your computer.

To connect the Stylus Scan using the USB port, see "Using the USB port (for Windows 98 or Macintosh)" auf Seite -10.

Printing Your First Page

After making sure your printer is operating correctly, you are ready to print your first page. To familiarize yourself with the printer software, we recommend printing the **README** file provided with your printer software. The **README** file contains the latest information about your printer software. Follow the instructions for Windows or Macintosh in this section.

■ For Windows

Follow these steps to print the **README** file.

1. Click **Start**, point to **Programs**, point to **Epson** (for Windows 95, and 98) or **EPSON Printers** (for Windows NT 4.0), and then click **EPSON Stylus Scan 2500 Readme**.
2. Click **Print** on the **File** menu. The **Print** dialog box appears.
3. Make sure your printer is selected and then click **Properties**, or **Options**. You may need to click a combination of these buttons. The driver settings window appears.

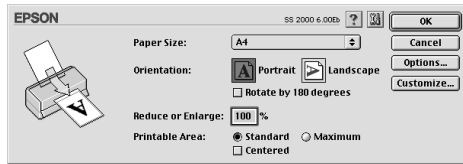



4. Click the **Main** tab if necessary, then click anywhere in the **Media Type** box and select the media you loaded in the printer.
5. Select **Color** as the Ink setting.
6. Make sure the Mode option is set to **Automatic**. When **Automatic** is selected, the printer software optimizes other settings according to the **Media Type** and **Ink** settings you make.
7. Click **OK** at the bottom of the window to return to the Print dialog box.
8. Click **Close**, **OK**, or **Print** to print. You may need to click a combination of these buttons.

■ For Macintosh

Follow these steps to print the **README** file.

1. Insert the printer software CD.
2. Open the **EPSON** folder and double-click the **README** file.
3. Choose **Page Setup** from the **File** menu. The following dialog box appears.

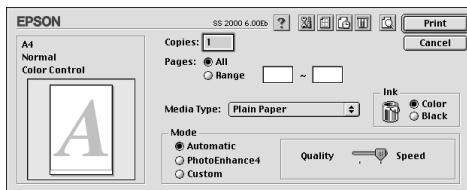


4. Select the paper size you loaded in the printer from the **Paper Size** list.
5. Select  **Portrait** as the Orientation option.
6. After making your settings, click **OK** to close the **Page Setup** dialog box.

Note:

*You cannot print from the **Page Setup** dialog box. You can only print from the **Print** dialog box.*

7. Choose **Print** from the **File** menu. The **Print** dialog box appears.



8. Select **Plain Paper** from the **Media Type** list.
9. Select **Color** as the Ink option.
10. Make sure **Automatic** is selected as the Mode setting. When **Automatic** is selected, the printer software optimizes other settings according to the **Media Type** and **Ink** settings you make.
11. Click **Print** to start printing.

Ink Recommendations

EPSON's unique print head with its innovative Piezo technology enables high printing speeds. In addition, each ink dot that is placed on the page has sharp edges with no satellite effect. EPSON ink has been specially developed for use with printers of the EPSON Stylus COLOR range. By using the original ink, the excellent properties of the EPSON Stylus Scan 2500 are guaranteed:

- Extremely long life of the print heads
- Brilliance of color
- Photographic quality
- High acceptance of different types of paper
- Smudge-proof
- High tolerance of environmental conditions

**Caution:**

- *EPSON recommends the use of original EPSON ink cartridges only. Other products not manufactured by EPSON may cause damage to your printer not covered by EPSON's warranties.*
- *Do not use an ink cartridge if the date on the package has expired.*

Using the Online Manuals

The CD-ROM shipped with your printer includes a number of online manuals in PDF format (PDF = Portable Document Format). PDF files can be used on various platforms (e.g. Windows, Macintosh, Unix etc.) and are electronic manuals with the same layout, illustrations, tables etc. to be found in a printed manual. You can display the online manual on your computer screen and print it out on any connected printer, if required.

The following online manual is available:

- **User's Guide**
Contains complete information on the printer's functions, maintenance, troubleshooting and technical specifications. Read this manual, if you require detailed information on the Stylus Scan 2500.

To access an online manual you need to install the Acrobat Reader on your system. The Adobe Acrobat Reader program is an easy-to-use application program for displaying and printing online manuals. It offers a wide range of features which allow you to use the online manuals without difficulty to find any desired information. You can read the information online on your computer screen or print it out on your printer for later reference. If you need complete information on the Adobe Acrobat Reader, refer to its online help.

If the Acrobat Reader is already installed on your system, you can skip the next section.

Note:

If the Adobe Acrobat Reader is not installed on your system, the manual will not open and an error message will be displayed.

■ Installing the Adobe Acrobat Reader

1. Make sure the printer is off and your computer is switched on.
2. Insert the EPSON printer software CD-ROM into your computer's CD-ROM drive.

Windows 95/98:

The setup program on the CD-ROM will be started automatically and displays the start screen. If the setup program is not started automatically, click the **Start** button, then click **Run** and enter the command **E:\Start.exe** to start the setup program.

Note:

*If your CD-ROM drive has a drive letter other than **E**, substitute the appropriate letter.*

Macintosh:

Display the contents of the CD-ROM on your computer screen and branch to the Acrobat Reader folder.

3. Select the preferred language.
4. **PC:**
Select **Online manuals**, followed by **Install Acrobat Reader** and follow the on-screen instructions.

Macintosh:

Start the Installer and follow the on-screen instructions.

After the Acrobat Reader has been installed on your system, you can access the online manuals.

■ Accessing the Online Manuals

The setup program on the CD-ROM offers two possibilities to access the online manuals: from the CD-ROM or from your computer hard disk.

Note:

Before you can access the online manual from your hard disk, you first have to install it on your system.

1. Insert the EPSON printer software CD-ROM into your computer's CD-ROM drive.

Windows 95/98:

The setup program on the CD-ROM will be started automatically and displays the start screen. If the setup program is not started automatically, click the **Start** button, then click **Run** and enter the command **E:\Start.exe** to start the setup program.

Note:

*If your CD-ROM drive has a drive letter other than **E**, substitute the appropriate letter.*

Note:

*If your CD-ROM drive has a drive letter other than **E**, substitute the appropriate letter.*

Macintosh:

Display the contents of the CD-ROM on your computer screen and branch to the Acrobat Reader folder.

2. Select the preferred language.

3. **PC:**

Select **Online manuals**. The setup program displays the name of the available online manual. Select the preferred online manual.

Select **manual name - Read** if you wish to open the manual from the CD-ROM. The Acrobat Reader will be started automatically and the online manual opened.

Note:

*If you wish to copy the online manuals to your system's hard disk, select **manual name - PC installation**. You can delete the manual from the hard disk at a later date by selecting **Software** in the **Control Panel** and double-clicking **EPSON Printer Software** in the list box. Then, click the **Utility** tab, select **Stylus Scan 2500 manuals** and click the **OK** button. When you are asked whether you want to delete the printer driver, click **No**. The manuals are deleted.*

Once the manuals have been installed on the hard disk, proceed as follows:

- **Windows 95/98:**

Click the **Start** button, point to **Programs**, then point to **EPSON**. Click on the name of the online manual. The Acrobat Reader will be started automatically and the online manual opened.

- **Macintosh:**

Double-click on the preferred online manual to open the manual from the CD-ROM. To install the online manual on your computer's hard disk, select the manual and drag it onto your computer's desktop.

Customer Support

EPSON's Service and Support hotline is available should you require urgent help. You will find the telephone number and further important information for your country in the Service and Support brochure provided with your printer.