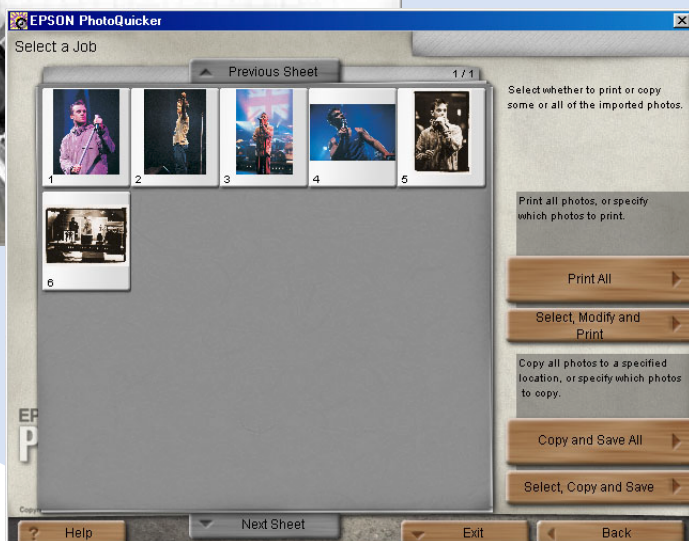
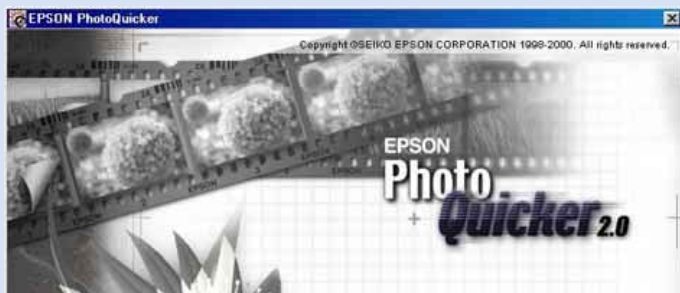


EPSON PhotoQuicker 2.0

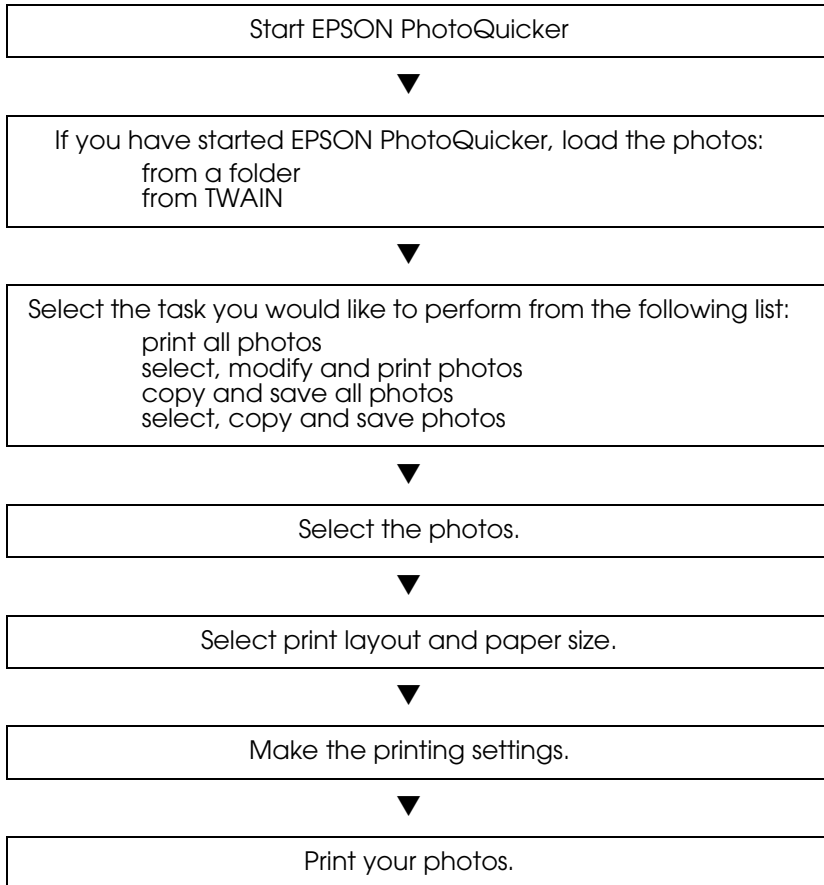


User's Guide

EPSON[®]

How to use this guide

This guide provides basic information about EPSON PhotoQuicker. To print your photo data, launch EPSON PhotoQuicker as instructed on page 7 in this guide, then follow the instructions below to print. For detailed information about the software, click the HELP button to open online help.



Please Note

Depending on your printer model:

- Some features may not be available.
- Paper sizes and types may vary.
- Some troubleshooting information contained in this manual may not be applicable.

Contents

Introduction to EPSON PhotoQuicker	5
Paper	6
Printing with EPSON PhotoQuicker	7
Launching EPSON PhotoQuicker	7
Loading photo data	8
Troubleshooting	12
Error messages	12
Problems loading photo data	13
Problems when Print All is selected	14
Problems during filter processing	14
Problems printing	16
System requirements	19
Flowchart	20

Introduction to EPSON PhotoQuicker

EPSON PhotoQuicker lets you print digital photos using a variety of layouts. Photo sizes can be adjusted or rotated with a single mouse click. Add titles or messages to your photos to customize them. The following is a list of the customizing features that are available. This utility also allows you to print using the information saved in a DPOF file.

❑ **Paper sizes and types**

A wide variety of paper sizes and types can be used for printing. By printing on different kinds of paper, you can create professional looking photographs and albums.

❑ **Layouts**

A variety of layouts are available, including index prints. Using layouts is simple—just select from the layout images displayed on screen.

❑ **Photo rotation**

Photos can be rotated with a single mouse-click so that they are oriented correctly. This can be useful when you have a number of pictures with different orientations.

❑ **Titles**

Words and phrases, or the date and time that your photo was taken, can be added to your photos. Add messages to photos intended as gifts to personalize them.

❑ **Photo enhancement**

The image quality of photos can be improved by enhancing the color level, contrast, and color balance. The Automatic Enhancement feature lets you enhance photos without requiring any technical knowledge of image processing. Or, a variety of simple buttons let you adjust the color level and brightness manually.

❑ **Effects**

A variety of interesting effects can be applied to photos, and then saved with the photo. This feature is useful when designing projects that use photos.

Paper

Various paper sizes and types can be used. Check the documentation that came with your printer for details.



Caution:

Do not touch the printing surface of the paper. Water or grease from your fingers may affect the quality of the print-out.

Printing with EPSON PhotoQuicker

This section describes how to print with EPSON PhotoQuicker.

Launching EPSON PhotoQuicker



Caution

When loading photo data that is stored on floppy or magneto-optical (MO) disks, do not remove the disk from the drive until all tasks have been completed, including printing and copying.

For Windows

1. Click the Start button, point to Programs and then EPSON PhotoQuicker 2.0, then click EPSON PhotoQuicker 2.0, or double-click the EPSON PhotoQuicker 2.0 icon on the desktop. The application will open and display the Start screen.
2. On the Start screen, click Start. A dialog box will open where you can specify the location of the data you wish to use.



For Macintosh

1. Double-click the Macintosh HD icon, then double-click the folder in which EPSON PhotoQuicker 2.0 has been installed. Double-click the EPSON PhotoQuicker 2.0 icon, or double-click the EPSON PhotoQuicker 2.0 icon on the desktop. The application will open and display the Start screen.
2. Click Start. A dialog box will open where you can specify the location of the data you wish to use.



Loading photo data

Once EPSON PhotoQuicker has been launched, you can access photo data in the application using any of the following methods. See the appropriate page for instructions.

- Page page 9 for loading data stored on disk
- Page page 10 for loading data from TWAIN-compliant equipment

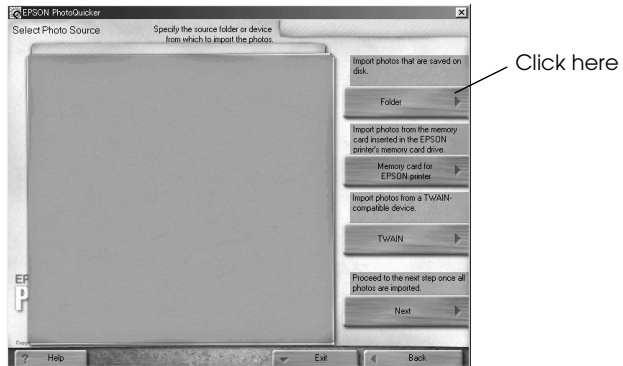
Note:

Depending on your printer model, the Memory card for EPSON printer button may not be available.

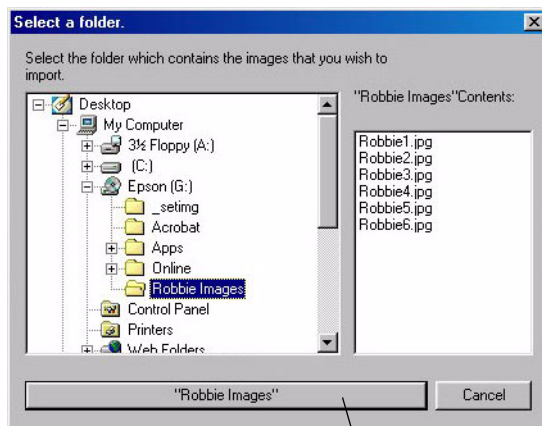
Loading data stored on disk

To access photo data stored on your hard drive or on disk, follow the steps below.

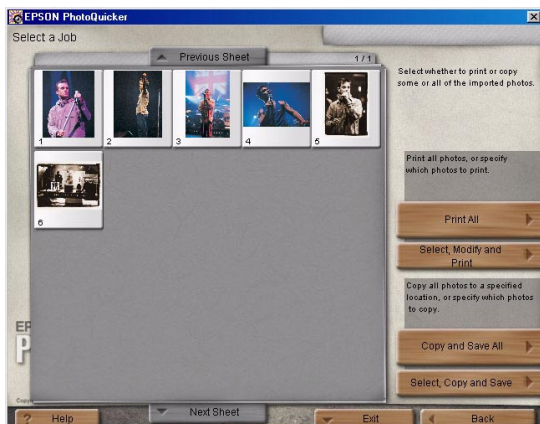
1. Launch EPSON PhotoQuicker. The Select Photo Source dialog box appears. Then click Folder.



2. The Select a folder dialog box appears. In the left-hand window, specify the folder that contains the photo data. The files contained in the specified folder are displayed in the right-hand window. Click the button which displays the folder name, as shown below.



- The photo data will load in EPSON PhotoQuicker. A dialog box appears where you can specify which task is to be performed.



Caution:

When loading photo data that is stored on floppy or magneto-optical (MO) disks, do not remove the disk from the drive until all tasks have been completed, including printing and copying.

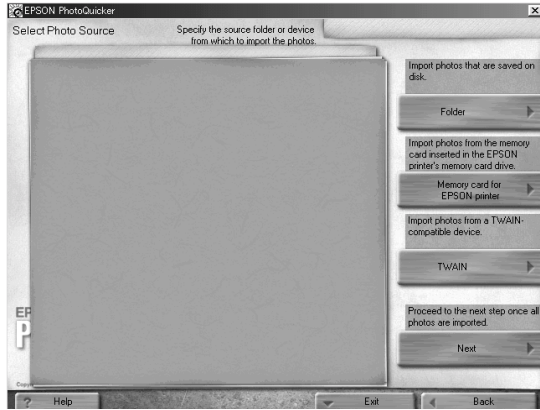
- To print your photos, click Help to refer to the online help for instructions.

Loading data from TWAIN-compliant equipment

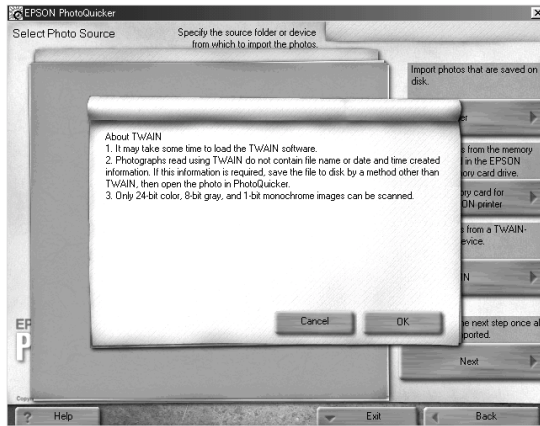
To access photo data from equipment that complies with TWAIN standards such as scanners and digital cameras, follow the steps below.

- Make sure that the TWAIN device is connected to the computer and, if necessary, ensure that the photo to be scanned is placed correctly.

2. Launch EPSON PhotoQuicker. The Select Photo Source dialog box appears.



3. Click TWAIN. A description of TWAIN and various precautions will be displayed.

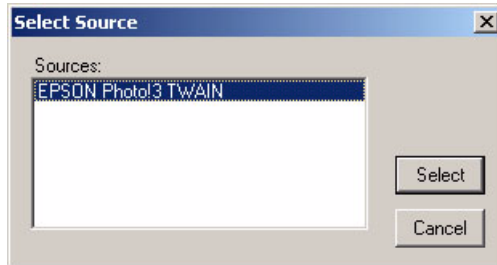


4. After reading the description, click OK. The connected TWAIN device will be displayed in the dialog box.

Note:

To cancel loading, click Cancel.

- Click the TWAIN device from which the photo data will be obtained, and then click **Select**. The TWAIN driver appears.



Note:

The dialog box which is displayed will vary depending on which TWAIN driver is installed.

- Follow the on-screen instructions, and then click **LOAD**. The photo data will load.
- To print your photos, click **Help** to refer to the online help for instructions.

Troubleshooting

Refer to the appropriate section if you encounter any problems using EPSON PhotoQuicker.

Error messages

If error messages are displayed during operation, follow the on-screen instructions to correct the problem.

Problems loading photo data

Cannot load photo data.

Cause	Solution
The photo data does not exist in the specified location.	Make sure that the format of the file in the specified location is supported by EPSON PhotoQuicker.
Insufficient space on the computer's hard disk or insufficient memory.	Free up sufficient space for EPSON PhotoQuicker to operate, or install more RAM.
The number of pixels contained by the photo being loaded is too small or too large.	EPSON PhotoQuicker supports pixel counts between 321×321 and $2,048 \times 1,536$. Photos with a pixel count of less than 321×321 cannot be loaded. When loading images with a pixel count of $2,048 \times 1,536$ on a Macintosh, it is necessary to increase the amount of memory allocated to EPSON PhotoQuicker.

Cannot load photo data from a scanner or digital camera.

Cause	Solution
The photo data is not 24-bit color, 8-bit gray or 1-bit monochrome image.	Change the color setting to 24-bit color, 8-bit gray or 1-bit monochrome, then reload the data.
The photo data does not exist in the specified location.	Make sure that the scanner or camera complies with TWAIN standards. For more details, see your scanner or camera manual.

Problems when Print All is selected

The number of copies to be printed cannot be specified.

Cause	Solution
Print All is selected in the Select a Job dialog box. The number of copies to be printed cannot be specified when Print All is selected.	Change the setting to Select, Modify and Print and try again.

The filter processing menu cannot be displayed on-screen.

Cause	Solution
Print All is selected in the Select a Job dialog box. Photo processing (filter setup) is not possible when Print All has been selected.	Change the setting to Select, Modify and Print and try again.

Problems during filter processing

The specified filter was not applied to the image.

Cause	Solution
Incorrect filter settings were made.	Make sure the filter settings are correct, and then click the Select a filter to be applied to this photo button or the Select a filter to be applied to all of the photos button.

The effect of a filter differs between photos.

Cause	Solution
EPSON PhotoQuicker performs optimum processing on each individual photo in accordance with pixel counts and print sizes.	Manually fine-adjust the filter for each photo while observing the effect.
Automatic adjustment and recorded color enhancement are performed automatically, using the optimum settings for each individual photo.	Manually fine-adjust the filter for each photo while observing the effect.

The effect of a filter differs from what was specified on the filter setup screen.

Cause	Solution
Automatic Adjustment has been selected in the Easy Print setting dialog box.	Clear the Automatic Adjustment check box.
The actual printout may differ from the image displayed on screen owing to a different display resolution for the filter sharpness, paint and texture functions.	Manually adjust the filter for the photo while observing the effect.

Problems printing

Cannot select Photo Quality Glossy Film as the paper type.

Cause	Solution
No Margins is selected as the layout.	Select a layout without No Margins.
You may be using a printer that does not support this paper type.	Select a different paper type.

It is not possible to print a filter-processed photo.

Cause	Solution
The processed photo has not been set up to print.	Click the Number of Prints tab on the Select Photos screen, and then click the photo to be printed.

The orientation of photos is not uniform.

Cause	Solution
The orientation of the digital camera was different when the photos were taken.	On the Optional Settings menu, click the Rotate tab, then click the photo to be rotated.

The size of the printed image exceeds the size of the paper, and some portions of the image have been lost.

Cause	Solution
Oversize Print is selected as the Print Size Adjustment setting.	Click Trimming Guide Settings on the Optional Settings menu and select Exact Size Print or Fit to Print as the Print Size Adjustment setting.

A white border exists at the top and bottom, or left and right sides, of the photo.

Cause

Solution

Resize Photos to Fit the Print Size is selected as the Photo Trimming Method setting.

Click Trimming Guide Settings on the Optional Settings menu and select Standard Trimming as the Photo Trimming Method setting.

A white border exists around the edges of the postcard after printing.

Cause

Solution

Undersize Print is selected as the Print Size Adjustment setting on the Trimming Guide Settings menu.

Cut around the edge after printing, or click Trimming Guide Settings on the Optional Settings menu and select Oversize Print as the Print Size Adjustment setting.

The Easy Print settings are not available.

Cause

Solution

The default printer is not compatible with Easy Print.

If you have a printer that is compatible with Easy Print, select it in the select a printer dialog box (for Windows) or in the Chooser, then click the Change button in the select a printer dialog box (for Macintosh).

Some Print Size Adjustment and Photo Cutting Guide settings cannot be made on the Trimming Guide Settings menu.

Cause	Solution
Depending on the paper size and print layout settings made on the Select a Layout menu, certain Trimming Guide settings may be unavailable.	Change the paper size and print layout settings.

The photo information cannot be displayed or printed.

Cause	Solution
The photo data has been loaded from a TWAIN device.	It is not possible to display or print photo information in this situation.
The photo information was not registered in the photo file when the photo was taken.	It is not possible to display or print photo information in this situation.

The page information cannot be printed.

Cause	Solution
When using roll paper, a selection other than Index has been specified as the print layout setting on the Select a Layout menu.	Index must be selected as the print layout setting in order to print the page information when printing with roll paper.

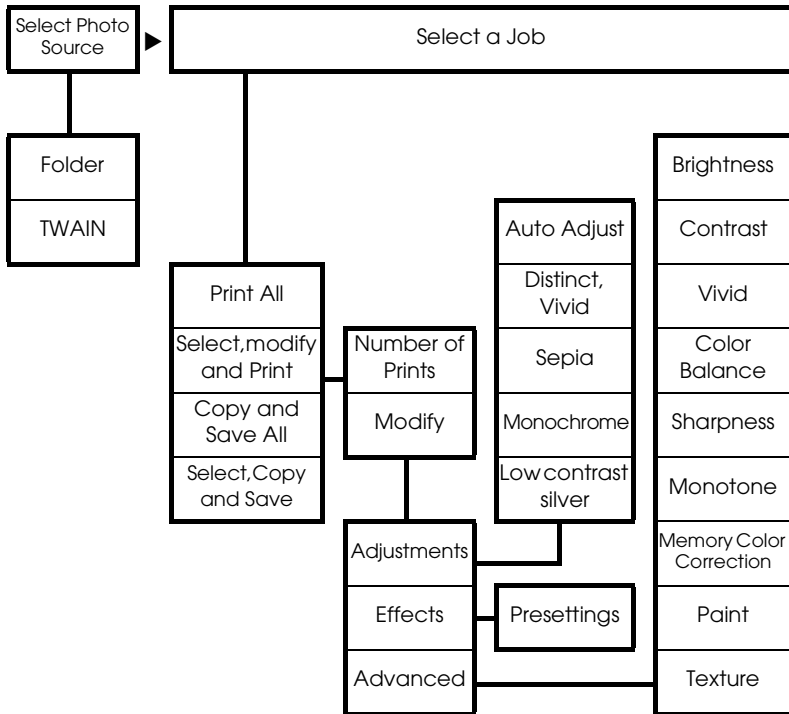
Note:

Depending on your printer, roll paper may not be available.

System requirements

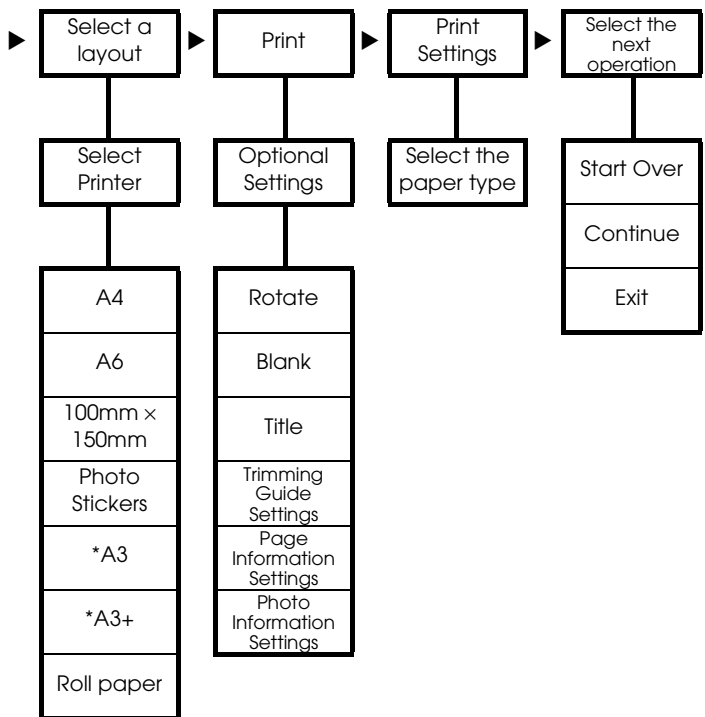
Item	Windows	Macintosh
Operating system	Microsoft Windows® Millennium Edition, 98, 95, 2000, or NT4.0	Mac OS 8.X/9.X (except 8.0)
Hardware model	DOS/V system equipped with a standard USB interface or parallel interface. A Sound Blaster or compatible sound card is required to reproduce sound.	PowerPC equipped with a standard USB interface (PowerPC G3 266 MHz or higher recommended)
CPU	Pentium 166 MHz or higher (Pentium II 266 MHz or higher recommended)	
Memory	64 MB or higher when handling images of three million pixels or more (128 MB or higher recommended)	42 MB or higher when handling images of three million pixels or more (128 MB or higher recommended)
Display	SVGA (800 × 600) 16-bit color or higher	SVGA (800 × 600) 32,000 colors or higher
Hard disk	Installation: 70 MB or more free space Operation: 220 MB or more free space when handling images of three million pixels	Installation: 70 MB or more free space Operation: 220 MB or more free space when handling images of three million pixels
CD-ROM Drive	Required	Required

Flowchart



Note:

Paper sizes and types may vary, depending on your printer. Function contents may vary depending on geographical region.



The Epson logo is positioned in the bottom right corner of the page. It consists of the word "EPSON" in a bold, blue, sans-serif font, followed by a registered trademark symbol (®). The logo is partially enclosed by a thin blue arc that curves upwards and to the left.

EPSON®