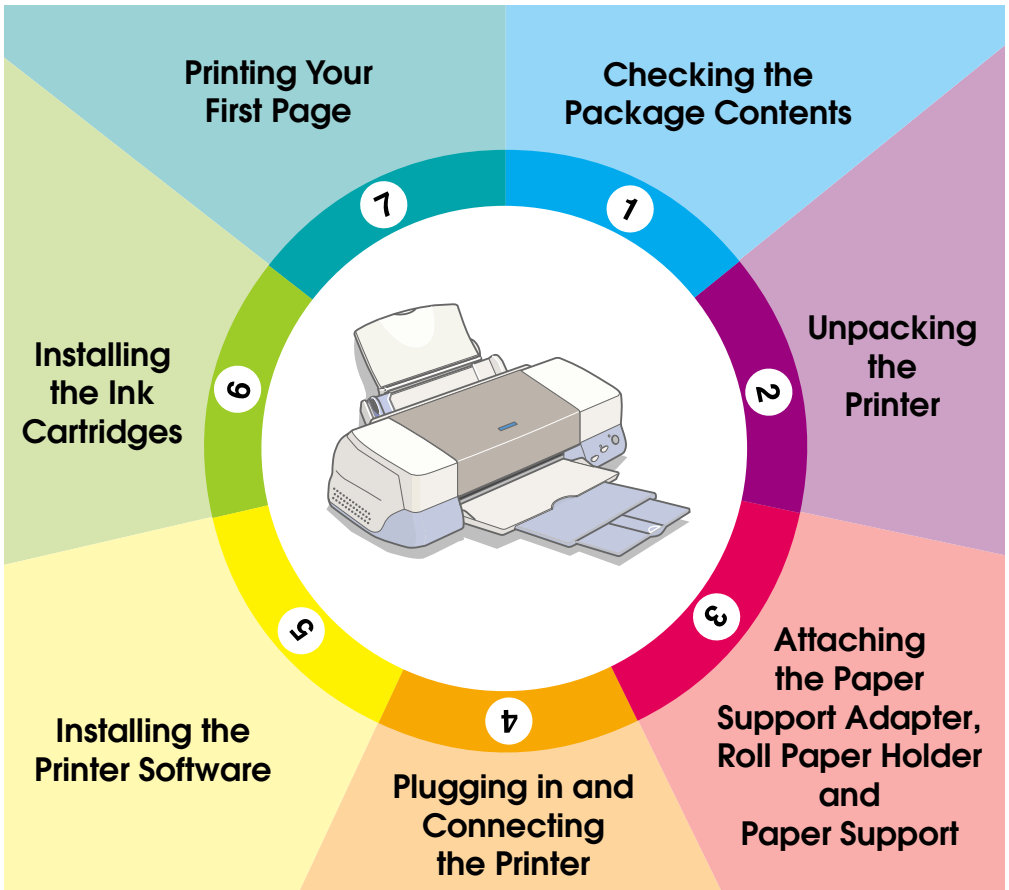


EPSON

Color Ink Jet Printer

EPSON STYLUS™ PHOTO 1290

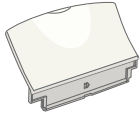
EPSON STYLUS™ PHOTO 890



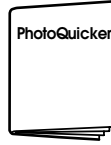
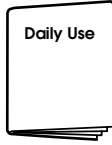
Setup Guide

1

Checking the Package Contents



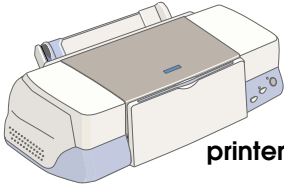
paper support



paper manuals



black ink cartridges
color ink cartridges



printer



printer software &
Reference Guide CD-ROM

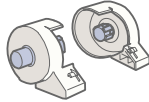


roll paper

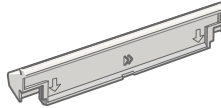


power cord*

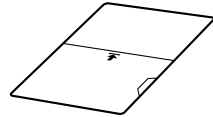
* The power cord may come attached to the printer in certain locations.



roll paper holder



paper support adapter



protective film

The package contents may vary in certain locations.

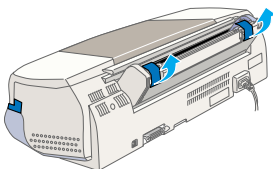
The illustration in this Guide show the EPSON Stylus Photo 1290; the EPSON Stylus Photo 890 is a small type of the printer.

2

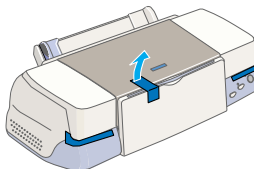
Unpacking the Printer

Remove all tape and protective materials from the printer.

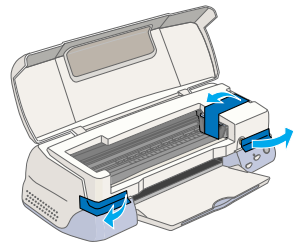
①



②



③



3

Attaching the Paper Support Adapter, Roll Paper Holder and Paper Support

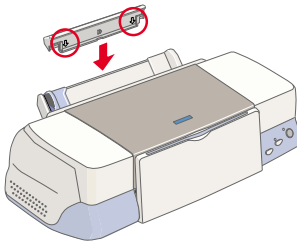
Hold the paper support adapter so that the arrows on the adapter facing toward the front of the printer, and insert the adapter into the slot at the rear of the printer.

Insert the roll paper holder into the slots at the back of the paper support adapter, then insert the paper support into the slot at the rear of the paper support adapter.

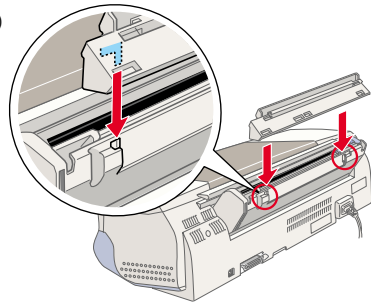
Note:

At this time you may mount the roll paper holder temporarily, by inserting it into any slots at the rear of the paper support adapter. You do not need to actually mount the roll paper.

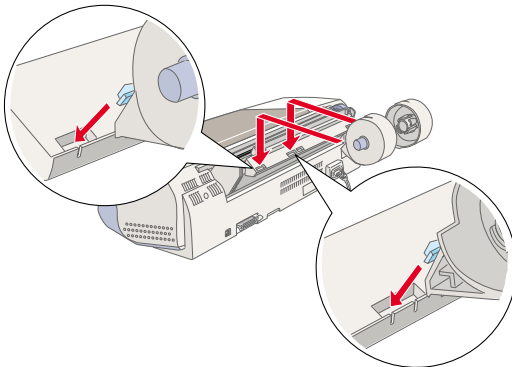
①



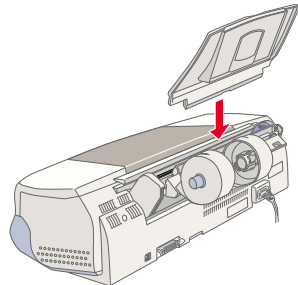
②



③



④



4

Plugging In and Connecting the Printer

Your printer connects to your computer via the parallel or USB interface. Macintosh computers can only be connected via the USB interface. Depending upon your geographic location, you may need to obtain the appropriate cable. See "Options and Consumable Products" in the *Daily Use* guide for details.

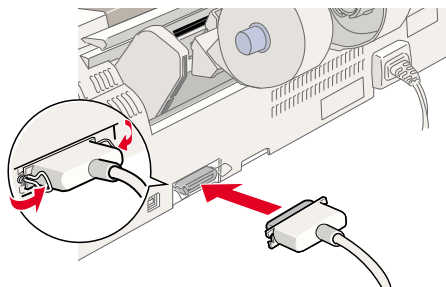
Note:

In order to connect your PC via the USB interface, your computer must be a Windows Me, 98 or Windows 2000 pre-installed model that comes with a USB port or Windows Me upgraded from a Windows 98 pre-installed model.

Using a parallel interface for Windows users

To connect the printer to your PC, you need a shielded, twisted-pair parallel cable. Follow the directions below.

1. Make sure that both the printer and the computer are turned off. Plug the power cord into a properly grounded electrical outlet.
2. Plug the cable connector securely into the printer's interface connector. Then, squeeze the wire clips together until they lock in place on both sides. If your printer has a ground connector screw to the right of the interface connector, connect the ground wire to the ground connector screw.
3. Plug the other end of the cable into the computer's parallel interface. If there is a ground wire at the computer end of the cable, connect it to the ground connector at the back of the computer.



Using a USB interface for Windows and Macintosh users

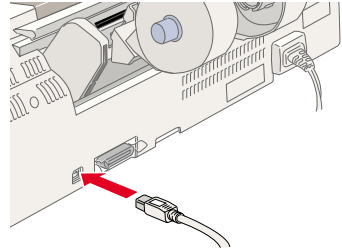
To connect the printer to a USB port, you need a standard, shielded USB cable. Follow these steps.

Note:

- ❑ *For best results, you should connect the printer directly to the computer's USB port. If you must use multiple USB hubs, we recommend that you connect the printer to the first tier hub.*

- ❑ *If your computer has more than one USB port, you may plug the cable in wherever is convenient.*

1. Make sure that both the printer and the computer are turned off. Plug the power cord into a properly grounded electrical outlet.
2. Plug the appropriate end of the cable into the USB port on the back of the printer. (The end that fits the printer has a different shape from the end that fits the computer.)
3. Connect the other end of the cable to the computer's USB port.



5

Installing the Printer Software

After connecting the printer to your computer, you need to install the software included on the "Printer Software for EPSON Stylus Photo 1290" or "Printer Software for EPSON Stylus Photo 890" CD-ROM shipped with your printer.

The printer software CD-ROM contains:

- ❑ **Printer software (printer driver and utilities)**
The printer driver runs, or "drives," your printer; use it to make settings such as print quality, speed, media type, and paper size. The Nozzle Check, Head Cleaning, and Print Head Alignment utilities help you keep your printer in top operating condition. EPSON Status Monitor 3 (for Windows) or EPSON StatusMonitor (for Macintosh) notifies you of printer errors and displays printer status information such as the amount of ink remaining. The Status Monitor also guides you through the ink cartridge replacement process.
- ❑ **EPSON PhotoQuicker**
This utility lets you print digital photos using a wide variety of layouts and effects with ease.
- ❑ **Online guides**
The online *Reference Guide* helps you learn more about your printer.

If you wish to make a floppy disk version of the printer software on your CD-ROM, you can use the driver disk creation utility included on the CD.


Refer to the appropriate section.

Installing in Windows




Follow the instructions in this section to install the printer software and EPSON PhotoQuicker.

Installing the printer software

Follow these steps to install the printer software.

1. Make sure that your printer is turned off.
2. Turn on your computer and start Windows. If the New Hardware Found dialog box or any other Wizard appears, click Cancel.
3. Insert the printer software CD shipped with your printer in the CD-ROM drive. The Installer dialog box appears. If it does not, double-click the My Computer icon, click the CD-ROM icon, then click Open on the File menu. Then, double-click EPsetup.exe. (For floppy disk users, insert the disk in a disk drive and double-click the My Computer icon, then the floppy disk drive icon, and then Setup.exe.)
4. Select Install Printer Driver/Utility, and click . Then, click OK in the dialog box that appears to start the printer software installation. If Problem Solver is available in your location, it is automatically installed on your hard drive.

Note:

-  *It is possible to install the Reference Guide on your hard drive from the Installer dialog box, as shown to the right. To install the guide, click Online Guide and then . Then, click Install Reference Guide and follow the on-screen instructions. When the installation is complete, an ESP 1290 890 Guide icon appears in the EPSON folder. Double-click the icon to open the guide.*
 -  *The Problem Solver provides tips and instructions to help you solve most problems that you may encounter when printing. The Problem Solver can be accessed through the EPSON folder, Status Monitor 3, or the printer software. For details, see the "Troubleshooting" section of your Daily Use guide.*
5. Follow the on-screen instructions to turn on your printer.
For Windows Me and 98 users, the printer port configuration starts automatically.



For printers connected via the USB cable, the USB device driver installation starts automatically at this point. When a message appears asking you to restart your computer, do so.

If you are a Windows 2000 user and using parallel cable, click the Stop Search button when the USB device driver installation starts, then follow the on-screen instructions.

6. After turning on the printer, the Setup utility opens automatically. Follow the on-screen instructions to install the ink cartridges, check the print head nozzles, and clean the print head. When a message appears informing you that the setup is complete, click OK.



Note:

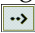
If the Setup utility does not start, proceed to section 6 to install the ink cartridges using the printer's control panel.

7. When a message appears informing you that the installation is complete, click OK.

Note:

If an error message appears, either the printer software or the EPSON USB printer device driver is not installed correctly. See "Troubleshooting" in the Daily Use guide for details.

Installing EPSON PhotoQuicker

1. After the setup is complete, the installer dialog box appears again. Choose Install EPSON PhotoQuicker, click , then click OK. (If the installer dialog box does not appear automatically, double-click the My Computer icon, and double-click the CD-ROM icon, and then EPSON PhotoQuicker.)
2. Follow the on-screen instructions.
3. When a message appears informing you that the installation is complete, click Finish.

After the setup is complete, proceed to section 7 to print your first page.

Installing in Macintosh

Follow the instructions in this section to install the printer software, select your printer in the Chooser, and install EPSON PhotoQuicker.



Caution:

Turn off all virus protection programs before you install the printer software.

Installing the printer software

Follow these steps to install your printer software.

1. Turn on your Macintosh and insert the software CD in the CD-ROM drive. The EPSON printer software CD-ROM opens automatically.
2. If the Install Printer Driver/Utility folder appears in the EPSON folder, open it and then double-click the Installer icon.

Note:

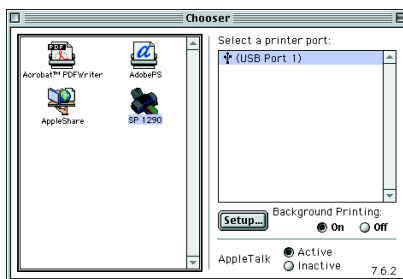
- ❑ It is possible to install the Reference Guide on your hard drive from the printer software CD-ROM. To install the guide, click Install Reference Guide and follow the on-screen instructions. When the installation is complete, a View Reference Guide icon appears in the EPSON folder. Double-click the icon to open the guide.
 - ❑ It is possible to access Technical Support from the printer software CD-ROM. Insert the CD in the CD-ROM drive and open the Install Printer Driver/Utility folder in the EPSON folder. Then double-click the Technical Support Web Site icon.
3. At the initial screen, click Continue. The Installer dialog box appears.
 4. To install the printer software that is included on your printer software CD-ROM, make sure that the Install Location box displays the correct drive, then click Install.
 5. When a message appears informing you that the installation is complete, click Restart to restart your computer.



Selecting your printer in the Chooser

After you have installed the printer software on your Macintosh, you need to open the Chooser and select your printer. You must select a printer the first time you use it or whenever you want to switch to another printer. Your Macintosh will always print using the last printer selected. Follow the steps below to select your printer in the Chooser.

1. Choose Chooser from the Apple menu. Then, select the icon for your printer and the port that your printer is connected to.
2. Select the appropriate Background Printing radio button to turn background printing on or off.



When background printing is on, you can use your Macintosh while it is preparing a document for printing. In order to use the EPSON Monitor3 utility to manage print jobs, background printing must be turned on.

3. Close the Chooser.

Installing EPSON PhotoQuicker

1. After setup is complete, the installer dialog box appears again. Double-click the EPSON PhotoQuicker, then double-click the Installer icon inside it.
2. The installer dialog box appears. Click Install.
3. When a message appears informing you that installation is complete, click Quit.



Installing the Ink Cartridges

This printer uses ink cartridges equipped with IC chips. The IC chip accurately monitors the amount of ink used by each cartridge, so even if a cartridge is removed and inserted again, all of its ink can be used. However, some ink from both color and black ink cartridges is consumed each time a cartridge is inserted because the printer automatically checks reliability.

Be sure to use the ink cartridges packed with your printer the first time that you install ink cartridges.

Refer to the appropriate section.

Using the Setup utility for Windows users

The Setup utility should open automatically when your printer software installation is complete. Follow the on-screen instructions. If you cannot access the Setup utility, refer to the next section, "Using the printer's control panel".

Using the printer's control panel

If you are a Macintosh user or cannot access the Setup utility, use the printer's control panel to install the ink cartridges.

Before installing the ink cartridges, note the following.



Warning:

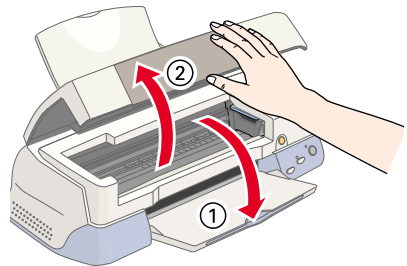
The ink cartridges are self-contained units. Under ordinary use, ink will not leak from a cartridge. If ink does get on your hands, wash them thoroughly with soap and water. If ink gets into your eyes, flush them immediately with water.


Note:

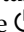
Do not open the ink cartridge packages until just before you install them; otherwise, the ink may dry up.

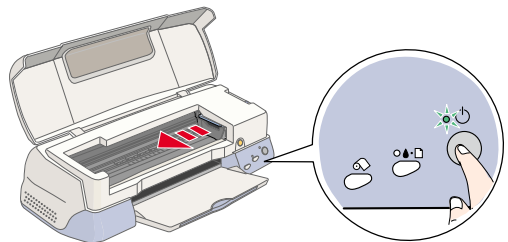
Follow the steps below to install the ink cartridges.

1. Lower the output tray and open the printer cover.



2. Turn on the printer by pressing the  power button.

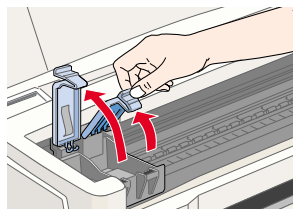
The print head moves to the left, which is the ink cartridge installation position. The  power light flashes and the error light comes on.



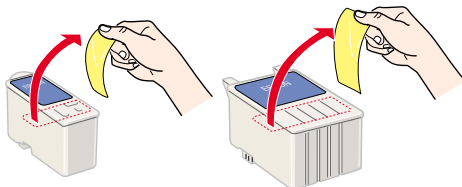
Caution:

Do not move the print head by hand. Doing so may damage the printer.

3. Push back the release tabs and lift up the ink cartridge clamps.

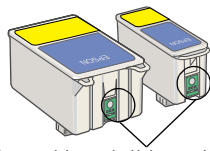


4. Open the ink cartridge packages. Next, remove only the yellow tape seals from each cartridge.



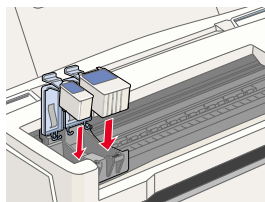
Caution:

- ❑ *You must remove the yellow tape seals from the cartridges before installing them; otherwise, the cartridges will become unusable and you will be unable to print.*
- ❑ *If you have installed an ink cartridge without removing the yellow tape seal, you must remove the cartridge and install a new one. Prepare the new cartridge by removing the yellow tape seal, then install it in the printer.*
- ❑ *Do not remove the blue portion of the tape seal from the cartridges; otherwise, the cartridges may become unusable.*
- ❑ *Do not remove the tape seals from the bottom of the cartridges; otherwise, ink will leak.*
- ❑ *Do not touch the green IC chip on the side of the cartridge. Doing so may prevent normal operation and printing.*
- ❑ *Do not remove the green IC chip from the side of the cartridge. If you install an ink cartridge without a chip, the printer may be damaged.*



Do not touch this part.

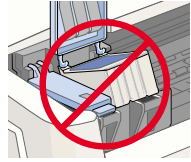
5. Align the tabs on each ink cartridge so that they are resting on the tabs protruding from the base of the opened ink cartridge clamps. Do not apply excessive force to the cartridges.





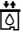
Caution:

Make sure that the ink cartridge tabs are not under the tabs protruding from the base of the opened ink cartridge clamps, as this can damage the clamps.




Note:

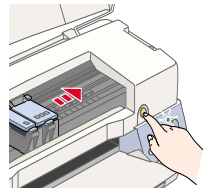
Install both ink cartridges. If either of the cartridges is not installed, the printer will not work.


6. Lower the ink cartridge clamps until they lock into place.
7. Press the  ink cartridge replacement button. The printer moves the print head and begins charging the ink delivery system. This process takes about two and a half minutes.

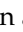


Caution:

Always press the  ink cartridge replacement button to move the print head. Do not move the print head by hand. Doing so may damage the printer.



While the ink is charging, the  power light flashes and the printer produces a variety of mechanical sounds. These sounds are normal.

When the ink delivery system has been charged, the print head returns to the home (far right) position and the  power light comes on.



Caution:

Never turn off the printer while the  power light is flashing.

8. Close the printer cover.

Checking the printer

Before printing your first page, you need to make sure that the printer is working correctly by loading paper, then printing a nozzle check page and, if necessary, cleaning the print head. Refer to the appropriate section below.

Loading paper

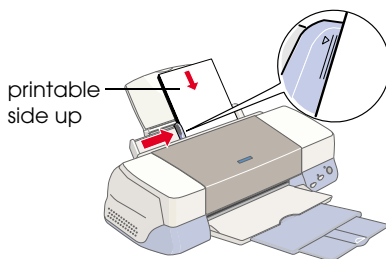
Follow the steps below to load plain paper in the printer.

1. Lower the output tray and slide out the extension. Next, slide the left edge guide so that the distance between the edge guides is slightly wider than the width of your paper.
2. Fan a stack of paper, then tap it on a flat surface to even the edges.


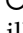
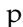
3. Load the stack of paper in the sheet feeder with the printable side up and the right edge of the paper resting against the right edge guide. Then, slide the left edge guide against the left edge of the paper.

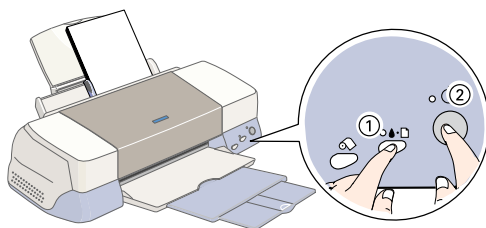
Note:

- ❑ Always load paper into the sheet feeder short edge first.
- ❑ Make sure that the paper stack fits under the arrow mark inside the edge guide.



Checking the print head nozzles

Make sure that the printer is turned off. Hold down the  maintenance button (① in the illustration) and press the  power button (② in the illustration) to turn on the printer. Then release only the power button first. When the printer starts the nozzle check, release the  maintenance button.

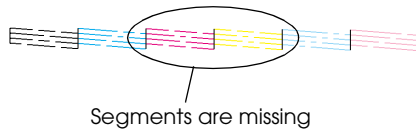


Below are sample printouts.

Good sample





Print head needs to be cleaned




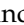
If the nozzle check page does not print satisfactorily (for example, if any segment of the printed lines is missing), then you should clean the print head as explained below. If the printout is satisfactory, you are ready to print your first page. See “Printing Your First Page” for instructions.

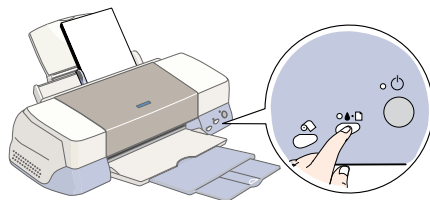
Cleaning the print head

Follow the steps below to clean the print head.

1. Make sure that the  power light is on and that the  error light is off.

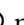
2. Hold down the  maintenance button for three seconds.

The printer starts cleaning the print head and the  power light begins flashing. Print head cleaning takes about thirty seconds to complete.



Caution:

Never turn off the printer while the  power light is flashing. Doing so may damage the printer.

3. When the  power light stops flashing, print a nozzle check pattern to confirm that the head is clean and to reset the cleaning cycle.

If print quality hasn't improved after repeating the nozzle checking and cleaning procedures four or five times, contact your dealer.





Printing Your First Page

After making sure that your printer is operating correctly, you are ready to print your first page. To familiarize yourself with the printer software, we recommend printing one of the sample files provided on the printer software CD-ROM. To print a sample file, follow the instructions for Windows or Macintosh in this section.

If you choose to print your own document instead, open the document in your application, then proceed to step 4 in the relevant section below, making changes where appropriate.


Note:

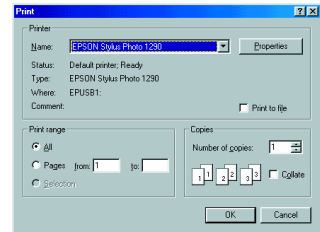
-  See your software manual for details on how to use your application.
-  Depending on the type of document you are printing and the type of paper you are using, you may have to make settings different from those described in this section.

For Windows users

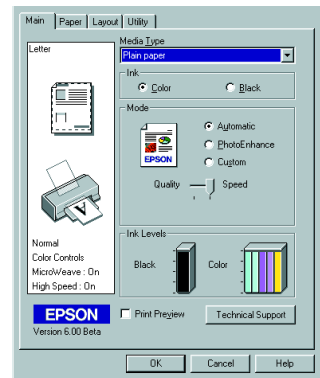
Follow the steps below to print the sample file.

1. Make sure that A4 or Letter size EPSON Photo Quality Ink Jet Paper is loaded in the printer.

2. Insert the printer software CD in the CD-ROM drive. If the Installer dialog box appears, click  Quit.
3. Double-click the My Computer icon. Then right-click the CD-ROM drive icon and click Open on the menu that appears. Double-click the sample.bmp file to open it.
4. To change the printer software settings, click Print on the File menu. A Print dialog box similar to the one on the right opens. (This example is from Paint).



5. Make sure your printer is selected in the Name list box, then click Properties. The printer software opens.
6. Click the Main tab, then click anywhere in the Media Type box and select Photo Quality Ink Jet Paper.
7. Select Color as the Ink setting.
8. Select Automatic as the Mode setting. When Automatic is selected, the printer software optimizes other settings according to the Media Type and Ink settings that you make.
9. Click the Paper tab, then click anywhere in the Paper Size box and select the paper size that is loaded in the printer.
10. Click OK at the bottom of the printer software. You return to the Print dialog box (or a similar dialog box).
11. Click Close, Print, or OK to print. You may need to click a combination of these buttons.



While printing, the EPSON Progress Meter is displayed, showing the printing progress and the status of your printer.

Note:

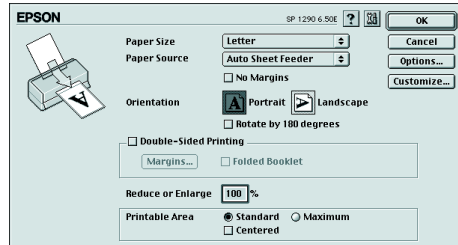
If the sample file does not print correctly, see “Problem Solver” in the online Reference Guide for solutions.


For Macintosh users

Follow these steps to print the sample file.

1. Make sure that A4 or Letter size paper is loaded in the printer.

2. Insert the printer software CD in the CD-ROM drive.
3. Open the Install Printer Driver/Utility folder in the EPSON folder and then double-click the README file.
4. Click Page Setup on the File menu. The following dialog box appears.

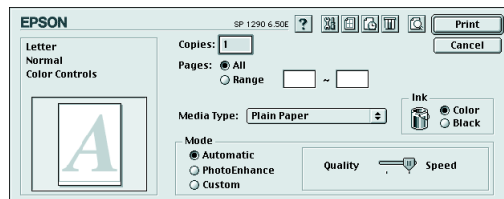


5. Select the paper size that is loaded in the printer from the Paper Size list.
6. Select  Portrait as the Orientation setting.
7. After making your settings, click OK to close the Page Setup dialog box.

Note:

You cannot print from the Page Setup dialog box. You can only print from the Print dialog box.

8. Click Print on the File menu. The Print dialog box opens.



9. Select Plain Paper from the Media Type list.
10. Select Color as the Ink option.
11. Select Automatic as the Mode setting. This causes the printer software to optimize other settings according to the Media Type and Ink settings that you make.
12. Click Print to start printing.

While printing is in progress, the EPSON Progress Meter is displayed, showing the printing progress and the status of your printer.

Note:

If the sample file does not print correctly, see “Problem Solver” in the online Reference Guide for solutions.