

**EPSON®**

# Macintosh OS X Supplement



---

## ***Installing the Printer Software***

Follow these steps to install the Printer Software.



***Caution:***

*Turn off all virus protection programs before you install the printer software.*

1. Insert the printer software CD in the CD-ROM drive.
2. Double-click the Mac OS X Driver folder, and then double-click the SP1290.pkg icon inside it.

If the Authorization window opens, click the key icon, enter the administrator's name and password, click OK, and then click Continue.

3. Follow the on-screen instructions to install the printer software.
4. After installing the software, follow the instruction below to select your printer:

Double-click Macintosh HD (by default setting). →  
Double-click the Application folder. → Double-click the  
Utilities folder. → Double-click the Printer Center icon. →  
Click Add. → Select EPSON USB. → Select your printer. →  
Click Add.

---

## ***Accessing the Online Reference Guide***

Follow these steps to access the online Reference Guide.

1. Double-click the English folder, and then double-click the User Guides folder.

2. Double-click the REF\_G folder, and then double-click INDEX.HTM.

---

## **Accessing the Printer Driver Settings Dialog Box**

The printer driver settings appear in the following dialog boxes. The settings in the Print dialog box change depending on the option selected on the pop-up menu in the Print dialog box. The settings in the Page Setup dialog box change depending on settings selected in the Page Setup dialog box.

<b>Dialog Box</b>	<b>Settings</b>
Print	Common in all options: Printer, Saved Settings or Presets Copies & Pages option: Copies, Collated, Pages Layout option: Pages per Sheet, Layout Direction, Border Output Options option: Save as File, Format Print Settings option: Media Type, Ink, Mode Color Management option: Color Management Summary option: Summary of current settings
Page Setup	Page Attributes setting: Settings, Format for, Paper Size, Orientation, Scale Summary setting: Summary of current settings

These dialog boxes can be accessed as described below.

<b>Dialog Box</b>	<b>How to Access</b>
Print	Click Print on the File menu of your application.
Page Setup	Click Page Setup on the File menu of your application.

---

## ***Making Settings in the Print Dialog Box***

You can make Media Type, Mode, Ink, Copies, and Pages settings in the Print dialog box. From this dialog box, you can preview the document before printing. Refer to the appropriate section below.

### ***Making the Media Type setting***

The Media Type setting determines what other settings are available, so you should always make this setting first.

In the Print dialog box with the Print Settings option selected, select the Media Type setting that matches the paper that is loaded in the printer. To find out what media type you are using, find your media in the Media Type Settings list in the online Reference Guide, and refer to the corresponding media type under which it is grouped (shown in bold larger type). For some media, there are several Media Type settings from which to choose.

## Making the Mode setting

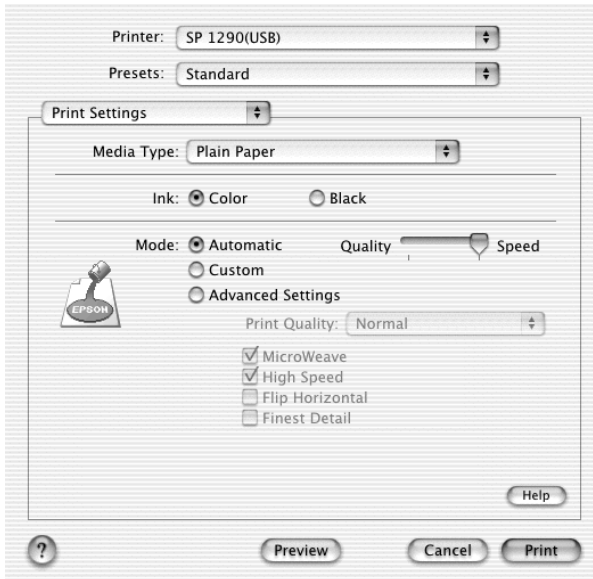
The Mode settings in the Print dialog box with the Print Settings option selected give you three levels of control over the printer software, as explained below:

<b>Automatic</b>	This mode provides the quickest and easiest way to start printing. See "Using the Automatic mode" on page 5 for details.
<b>Custom</b>	This mode lets you choose from a list of ready-made or personalized settings suited to the kind of document that you want to print. When Custom is selected, the Advanced button is enabled, allowing you to access the Advanced dialog box. See "Using the Custom mode" on page 6 for details.
<b>Advanced Settings</b>	In this mode, it is possible to make more detailed settings for printing. See "Using the Advanced Settings mode" on page 7 for details.

In addition to making comprehensive Mode settings that affect overall print quality, you can also modify individual aspects of your printout using the settings contained in the Page Setup dialog box. See "Making Settings in the Page Setup Dialog Box" on page 15.

## Using the Automatic mode

When Automatic is selected as the Mode setting in the Print dialog box in which the Print Settings option is selected, the printer software takes care of all detailed settings based on the current Media Type and Ink settings. To make the Ink setting, see “Making the Ink setting” on page 9. To make the Media Type setting, see “Making the Media Type setting” on page 3.

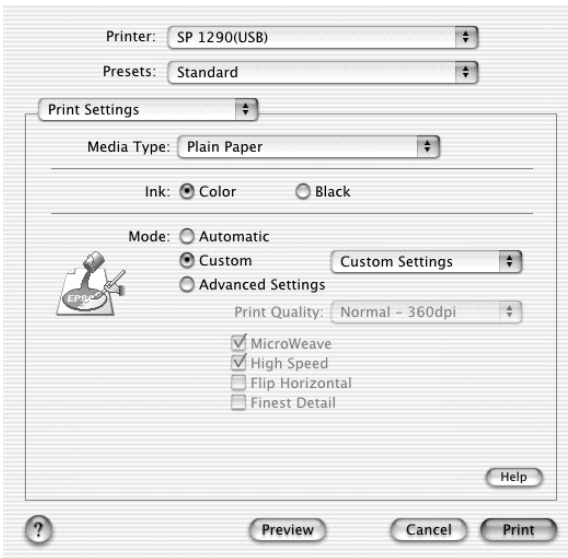


### **Note:**

*Depending on the media selected in the Media Type list (while Automatic is selected), a slider appears to the right of the Mode options that lets you choose Quality or Speed. Select Quality when print quality is more important than speed.*

## Using the Custom mode

Selecting Custom as the Mode option enables the Custom Settings list, from which you can choose a ready-made setting designed for printing text and graphs. Or, you can select ColorSync, a color-matching method. You can also create and save your own custom settings. For details on making your own custom settings see “Using the Advanced Settings mode” on page 7.



By default, you can choose from the following:

Color-matching method	Description
Economy	This setting is best for printing drafts of text.
ColorSync	This method automatically adjusts printout colors to match the colors on your screen.



When you select a custom setting, other settings such as Print Quality, and Color Management are made automatically. Changes to these settings are reflected in the display at the left side of the Print dialog box.

Follow the steps below to select a custom setting.

1. Select the Print Settings option from the pop-up menu in the Print dialog box.
2. Select Custom as the Mode setting in the Print dialog box. This enables the Custom Settings list, located to the right of the Custom radio button.
3. From the Custom Settings list, select the most appropriate setting for the type of document or image that you want to print.
4. Confirm that the Media Type and Ink settings in the Print dialog box are correct. For details, see “Making the Ink setting” on page 9 or “Making the Media Type setting” on page 3.

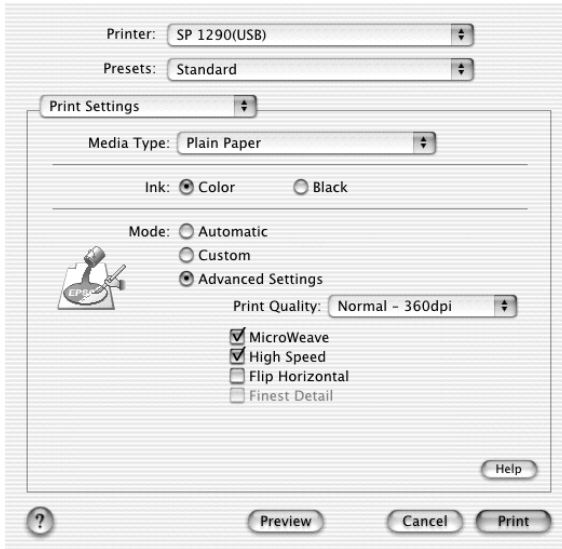
### ***Using the Advanced Settings mode***

Selecting Advanced Settings as the Mode option gives you complete control over your printing environment. Use these settings to experiment with new printing ideas or to fine-tune a range of print settings to meet your individual needs.

Follow the instructions below to make Advanced settings.

1. Select the Print Settings from the pop-up menu in the Print dialog box.

2. Select Advanced Settings as the Mode option in the Print dialog box.



3. Choose Color or Black as the Ink setting.
4. Specify a Print Quality setting.
5. Make other settings as necessary. For details, see online help.

**Note:**

*Some settings may be unavailable, depending on the Media Type, Ink, and Print Quality settings that you make.*

### *Making the Copies setting*

To make the Copies setting, select Copies & Pages from the pop-up menu, and then enter the number of copies that you want to print in the Copies text box.

### *Making Print Order settings*

To make print order setting, select Copy & Pages from the pop-up menu, and then select Collated to print one complete document set at a time when printing multiple copies.

### *Making the Pages setting*

To make the Pages setting, select Copies & Pages from the pop-up menu, and then select either All or From and to. If you select From and to, enter the first page of the appropriate range of pages in the From text box and the last page in the to text box.

### *Making the Ink setting*

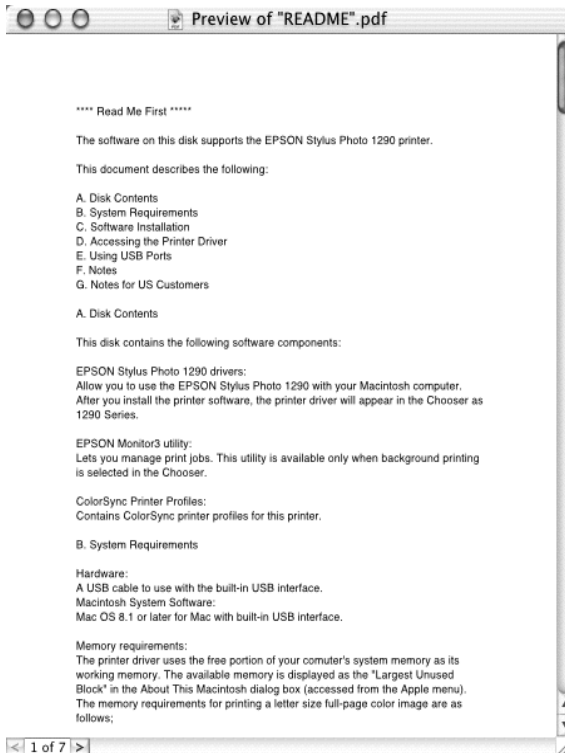
To make the Ink setting, select Print Settings from the pop-up menu, and then click Color to print in color, or Black to print in black-and-white or grayscale.

## ***Previewing your printout***

The Preview feature allows you to see how your document will look before actually printing it. Follow these steps to preview your document.

1. Make your printer driver settings.

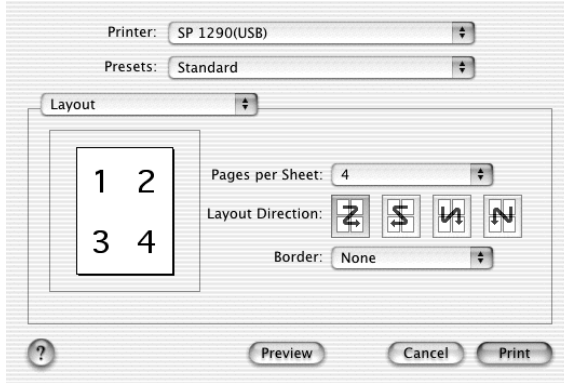
2. Click the Preview button in the Print dialog box. The Preview dialog box appears and displays a preview of your document.



**Note:**  
*Preview is a standard feature of Mac OS X.*

## Making N-up settings

Select Layout from the pop-up menu as the Multi-Page setting to print multiple pages of your document on one sheet of paper.



When Layout is selected, you can make the following settings:

<b>Pages per Sheet</b>	Prints multiple pages of your document on a single piece of paper. You can select from 1, 2, 4, 6, 9, or 16.
<b>Layout Direction</b>	Allows you to specify the order in which the pages will be printed on the sheet of paper.
<b>Border</b>	Prints a border around the pages printed on each sheet. You can select from None, Single hairline, Single thin line, Double hairline, or Double thin line.

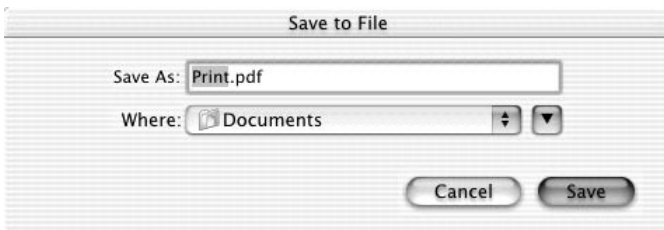
**Note:**

*The Layout settings available are a standard feature of Mac OS X.*

## ***Saving the document as a PDF file***

You can save the document as a PDF file by selecting Output Options from the pop-up menu in the Print dialog box. Follow the steps below.

1. Make your printer driver settings.
2. Select Output Options from the pop-up menu. The Print button changes into the Save button.
3. Click the Save button. The following dialog box appears.



4. Select the location where you want to save the file, type a file name in the Save As text box, and then click Save.

***Note:***

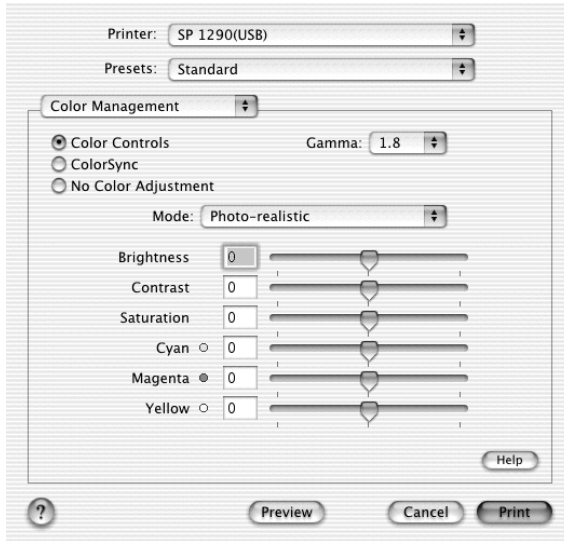
*The Save as File setting is a standard feature of Mac OS X.*

## ***Making the Color Management setting***

Selecting Color Management from the pop-up menu gives you control over the color matching and adjustment methods provided with the printer driver.

Follow the instructions below to make Color Management settings.

1. Select Color Management from the pop-up menu in the Print dialog box. The following dialog box appears.

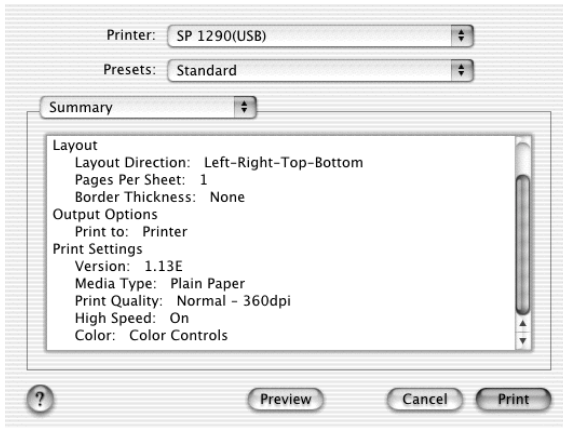


2. Make the settings as necessary. For details, see online help.

## ***Showing the current settings in the Print dialog box***

In the Print dialog box with the Summary option selected, you can confirm the current settings in the Print dialog box.

Select Summary from the pop-up menu. The following dialog box appears.



The current settings of Copies & Pages, Layout, Output Options, and Print Settings are displayed in the list.

**Note:**

*The Summary option is a standard feature of Mac OS X.*

## ***Saving and using your settings in the Print dialog box***

### ***Saving your settings in the Print dialog box***

To save your settings in the Print dialog box, select Save Custom Setting from the pop-up menu.

Your settings will be saved as Custom in the Presets list. You can save up to only one set of custom settings.



## Using your saved settings in the Print dialog box

To use your saved settings, select Custom as the Presets in the Print dialog box.

If you change the Media Type or Ink settings while your customized setting is selected in the Presets list, your saved setting is not affected by the change. To return to your saved setting, simply reselect it in the list.

**Note:**

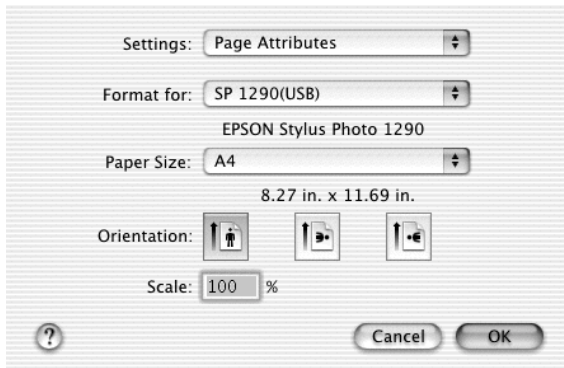
*The Custom Setting option is a standard features of Mac OS X.*

---

## Making Settings in the Page Setup Dialog Box

In the Page Setup dialog box, you can change the paper size, specify the paper orientation, and reduce or enlarge your printout.

Choose Page Setup from the File menu of your application. The Page Setup dialog box appears.



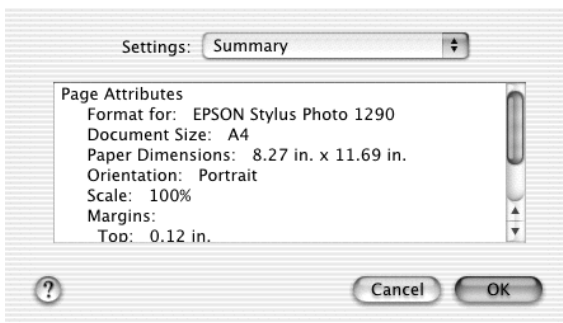
You can make the following settings in the Page Setup dialog box.

<b>Settings</b>	Select Page Attributes or Summary. When Page Attributes is selected, the page setting items will be displayed. When Summary is selected, a list of the current settings will be displayed. For more information on Summary, see "Showing the current settings in the Print dialog box" on page 13.
<b>Format for</b>	Select the printer to be set up in the Page Setup dialog box.
<b>Paper Size</b>	Select the paper size that you want to use.
<b>Orientation</b>	Select Portrait (tall) or Landscape (wide) to change the orientation of your printout.
<b>Scale</b>	Use this setting to reduce or enlarge the size of your image.

## ***Showing the current settings in the Page Setup dialog box***

In the Page Setup dialog box with the Summary option selected under Settings, you can confirm the current settings in the Page Setup box.

Select Summary as Settings. The following dialog box appears.



The current settings of Format for, Document size, Orientation, and Scale are displayed in the list.

**Note:**

*The Summary option is a standard feature of Mac OS X.*

---

## ***Accessing the EPSON Printer Utility Dialog Box***

Follow the steps below to access the EPSON Printer Utility dialog box.

1. Double-click Macintosh HD (by default setting), double-click the Application folder, and then double-click the EPSON Printer Utility icon. The Printer List window appears.
2. Select your printer, and then click OK. The EPSON Printer Utility dialog box appears.

## ***Using EPSON Status Monitor***

EPSON Status Monitor monitors the printer. If it detects a printer error, it will inform you with an error message.

When the ink runs low or out, a How to button appears. Click How to and EPSON StatusMonitor will lead you step-by-step through the ink cartridge replacement procedure.



You can also use this utility to check ink levels before printing. When open, EPSON StatusMonitor displays the amount of ink remaining at the time it was opened. To update the ink level information, click the Update button.

---

## ***Getting Information Through Online Help***

Your printer software has an extensive online help feature, which provides you with instructions on printing, making printer driver settings, and using the printer utilities.

To access online help, choose Print from the File menu of your application. Next, select Print Settings or Color Management from the pop-up menu, and then click the Help button.


---

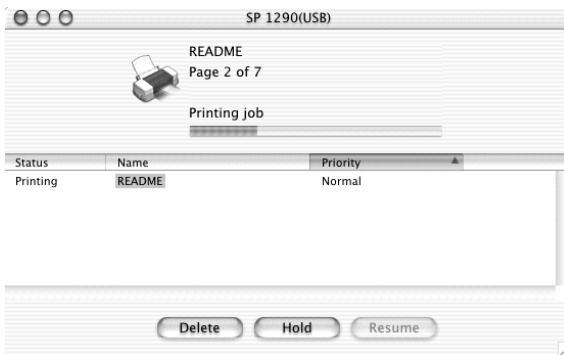
## ***Canceling Printing***

If you encounter problems while printing, you may need to cancel printing. Follow the steps to cancel a print job.

1. Click the Print Center icon in Dock.



2. Press the  power button to turn off the printer.
3. In the Document Name list, select the document which is printing, and then click the **Delete** button to cancel the print job.



---

## ***Unavailable Features with Mac OS X***

The following features are unavailable with Mac OS X.

- ❑ PhotoEnhance mode
- ❑ Edge smoothing
- ❑ Custom paper sizes
- ❑ Paper source selections
- ❑ Printable area options
- ❑ Fit to page printing
- ❑ Poster printing
- ❑ Watermark printing
- ❑ Double-sided printing
- ❑ Reverse order printing
- ❑ High speed copies printing
- ❑ Print time
- ❑ Configuration Settings dialog box
- ❑ Printer sharing
- ❑ Reduce banding problem mode
- ❑ Saving ESC/P command file
- ❑ Error handling while printing
- ❑ Uninstalling the printer driver

---

## ***System Requirements for Using the Printer***

To connect this printer to Apple® Macintosh® computers, you must use a USB cable.

Your Macintosh must also meet the following system requirements.

<b>Minimum System Requirements</b>	<b>Recommended System</b>
Mac OS X 10.1	Mac OS X 10.1 or later
128 MB RAM	256 MB RAM or more

***Note:***

*To see how much memory is available, choose About This Mac (for Mac OS X users) from the Apple menu.*

In addition to these system and memory requirements, you need 20 MB of free hard disk space to install your printer software. To print, you also need extra hard disk space amounting to about twice the size of the file that you want to print.

**EPSON**