

User's Guide Update for Macintosh USB

EPSON GT-7000 USB and Perfection 636U can be used also with Apple[®] Macintosh[®] under the following conditions.

System: Apple Macintosh with built-in USB port

Note for iMac[®] users:

If you are using Mac OS 8.1, you need to install iMac Update before installing the scanner software. This is available online from the Apple Web site, where complete information on the software is provided. If you are using Mac OS 8.5, you do not need to install iMac Update.

Interface: Macintosh USB

Interface cable: USB interface cable (attached to your scanner)



Caution:

Use of other cables with your EPSON scanner (especially cables more than 1.8 meters long) may cause malfunction.

Installing Scanner Software

Before connecting the scanner to your Macintosh, install the EPSON scanner software; EPSON Scan! II, EPSON TWAIN, EPSON Scanner Monitor, PageManager for EPSON and other application software from the CD-ROM. Follow the steps below and see "Installing the Scanner Software for Macintosh" in your scanner software manual for details.

Note for iMac users:

- ❑ *If you are using Mac OS 8.1, you need to install iMac Update before installing the scanner software. This is available online from the Apple Web site, where complete information on the software is provided.*
- ❑ *You do not need to install iMac Update with Mac OS 8.5.*

1. Turn on the computer.
2. Insert the CD in the CD-ROM drive.
3. Double-click the EPSON TWAIN USB folder.

Depending on the country of purchase, the EPSON TWAIN USB folder may contain multiple-language versions of the software. Double-click the folder of your preferred language.

4. Double-click the EPSON TWAIN Installer icon.
5. The installer software shows a dialog box. Click Install in the dialog box that appears, and follow the instructions on the screen.

When EPSON Scan! II, EPSON TWAIN and EPSON Scanner Monitor for USB installation is complete, the EPSON Screen Calibration utility automatically starts. See your software manual for instructions, then continue from step 6 below to install other application software.

6. Double-click the folder that contains the software you want to install.

The Software folder may contain multiple-language versions of the software. Double-click the folder of your preferred language.

7. Double-click the installer icon to start the installation program. Then follow the instructions on the screen.

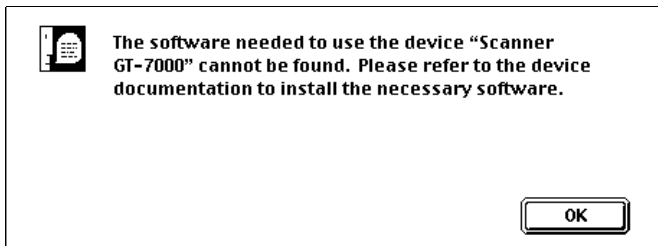
Connecting the USB Cable

Follow the steps below to connect your scanner. See “Connecting the Scanner (USB) to Your Computer” in your hardware manual for more information.

1. Connect one end of the cable to the USB port on the back of the scanner.
2. Connect the other end of the cable to the USB port on your computer, or USB hub.

Note:

- If you connect your scanner through more than one hub, your system may not work properly. In this case, try connecting the scanner directly to the computer’s USB port. Also, your system may not work properly if you use a USB cable other than that supplied by EPSON.*
- USB cables enable you to connect the scanner whether your scanner and PC are on or off. If you connect your scanner before installing scanner software, the following dialog box appears. Click OK, then install scanner software.*



Starting the EPSON TWAIN

When starting EPSON TWAIN through EPSON TWAIN compliant application software, select EPSON TWAIN 3U in the Data Source list box. See your software manual for more detailed information.